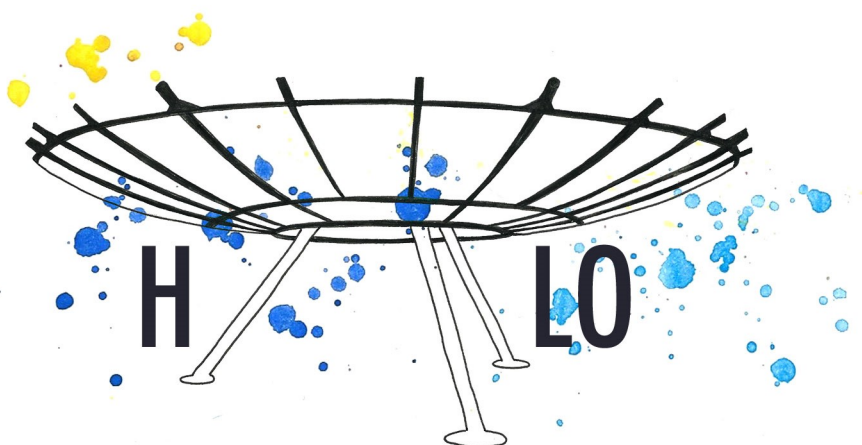
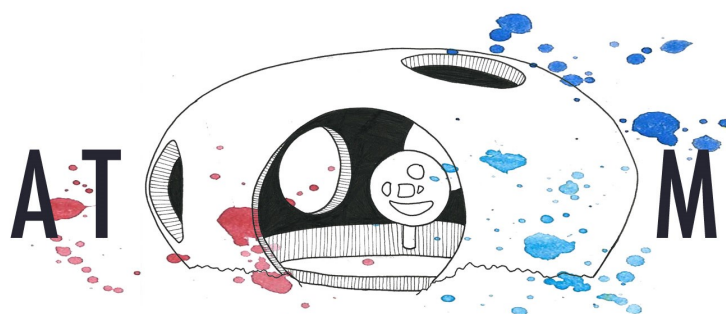


mpa

Panopticons Early Years Resource Pack



Introduction

This resource pack has been created as part of *Songs From the Singing Ringing Tree*, a year long project delivered in Early Years nursery school settings in Burnley and Brierfield using high quality music making to develop the communication skills and confidence of around 150 children at risk of language delay. Further information about the project is available here:

<http://midpenninearts.org.uk/projects/sfsrt/>

The project included inspiration visits to three of the Mid Pennine Arts' *Panopticons* - *Halo*, *Atom*, and of course the *Singing Ringing Tree* itself. The *Panopticons* are a unique series of 21st century landmarks, each commanding spectacular views of the Lancashire countryside. The activities suggested in this pack are based on those visits, and are suitable for any Early Years groups or settings, and families with young children, to encourage younger audiences to explore these spectacular public art works.

Thank you to our wonderful team of Early Years Music Leaders, Beth Allen, Zoe Greenhalgh and Ben McCabe from More Music, for their contributions to this resource pack.

Panopticon (noun) structure, space or device providing a comprehensive or panoramic view

From ***Singing Ringing Tree***, on Crown Point above Burnley, look north for a superb view of Pendle Hill or east for a glimpse of the Cliviger wind turbines on the Yorkshire border. In between there is a panoramic overview of Burnley, with the famous Turf Moor football stadium at its centre. On a clear day you can see the Bowland Fells, Pendle, Ingleborough, Pen-y-ghent and Great Whernside.

From ***Atom***, nestling on the hillside high above Wycoller village, there are breath taking views of the Pendle landscape all around, including the historic settlement of Wycoller, now a conservation area.

From ***Halo***, the centrepiece of a former landfill site on Top o' Slate above Haslingden, you can enjoy commanding views of the Rossendale Valley, Greater Manchester and into Hyndburn, Burnley and Ribblesdale Valley.



Creative Ideas for Early Years!

LISTEN to what you can hear on top of the hill and then name and copy the sounds.

☐

Try SHOUTING hello from the inside of Atom and then again out on the hill. Can you hear any difference?

☐

What can you SEE through the round windows? Give each window a name (the sky window, the sheep window, the farm window). Can you think of a song for every window, like Baa Baa Black Sheep, Old Macdonald, Twinkle Twinkle?

☐

SIT inside Atom and TELL stories or SING songs. Make yourself comfy with picnic blankets or chairs.

☐

Divide into pairs/two groups. One group stays inside while the other CREEP around the outside of Atom and POP UP in the window. Can you make your friends jump? Can they guess which window you will pop up in next?

☐

Can you THROW a ball through the sky window? Can a friend outside Atom CATCH it?

☐

What do you think Atom could be? A house, a boat, an egg? Use your imagination!

☐

For directions to all of the Panopticons or more information about Early Years music projects, visit www.midpenninearts.org.uk



Creative Ideas for Early Years!

Stand directly underneath the centre of Halo and LOOK up at the sky – can you see any shapes in the clouds? Then turn to face every direction – what can you SEE?

☐

SPIN round and round and make yourself dizzy

☐

If Halo is a space ship what sound would it make? IMAGINE you are taking off on a journey into space – which planets and stars will you visit?

☐

Can you BEAT out a rhythm on the legs of the spaceship, getting faster and faster as take off approaches...

☐

PARADE around the outside of Halo singing a song. When the song finishes FREEZE. How long can you stay as still as a statue on the hill?

☐

What rhymes and what nearly rhymes with 'Halo'? High and Low, Glow, J-Lo....Hello! MAKE a poem or a song out of the words you think of.

☐

Can you ROLL things down the slopes of the legs? Hats, stones, toy cars?

☐

For directions to all of the Panopticons or more information about Early Years music projects, visit www.midpenninearts.org.uk



SINGING RINGING REE

Creative Ideas for Early Years!

WAIT and LISTEN - when the wind rises the whistling starts. Whereabouts on the tree is it loudest? Try and match the note with whistle or a hum

☐

TAP the pipes (carefully!) with a stick or stone – do different pipes have different sounds?

☐

SING or CALL down the tubes to someone at the other end. Can they guess which pipe you are at?

☐

PLAY the pipes by slapping the end with a stiff piece of card or plastic lid.

☐

WHISPER to a friend at the other end of one of the tubes and have a secret chat. Why not try a game of Chinese Whispers?

☐

I SPY with my little eye. What can you see through the pipes? Take a photo!

☐

SIT astride the log bench and sing horse riding songs or Row Row Row The Boat. BALANCE on the bench – can you walk the plank (be sure to make a splashing noise as you land!).

☐

LISTEN as you walk down the path – what can you hear? Gravel crunching, the tree wailing in the wind, skylarks singing, sheep bleating

☐

For directions to all of the Panopticons or more information about Early Years music projects, visit www.midpenninearts.org.uk

With thanks to:



National Foundation for
Youth Music



LOTTERY FUNDED

Supported using public funding by

**ARTS COUNCIL
ENGLAND**



The Stocks Massey Bequest Fund

**Taywood Nursery School
Stoneyholme Nursery School
Woodfield Nursery School**

Illustrations by Alex Heaton

Mid Pennine Arts

1 Neptune Street
Weavers' Triangle Burnley
Lancashire BB11 1SF

Tel : +44 (0)1282 421986
Email : info@midpenninearts.org.uk
Web : www.midpenninearts.org.uk

: www.facebook.com/teamMPA
: www.twitter.com/teamMPA
INVESTORS IN PEOPLE

Reg Charity No. 1145521
VAT No. 174-7248-42
Company No. 7880356