
The
GALLERY
Downstairs

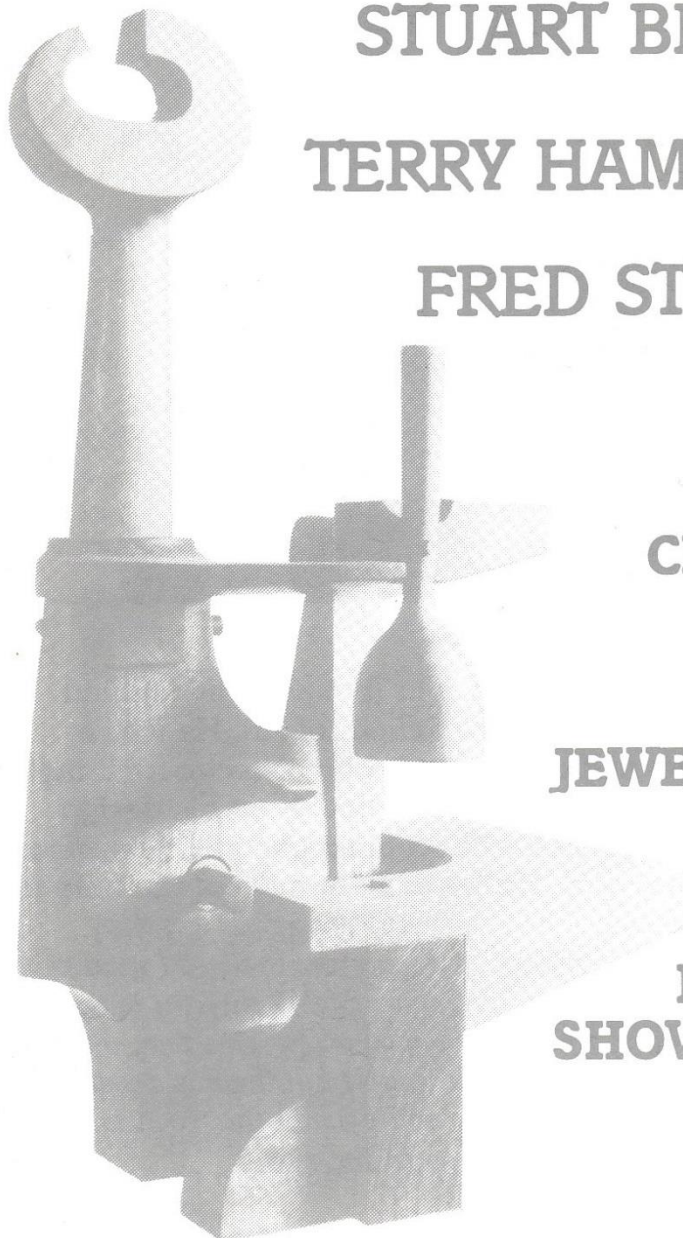
APRIL 1987

***WOOD
SCULPTURES***

STUART BEATY

TERRY HAMMILL

FRED STIVEN

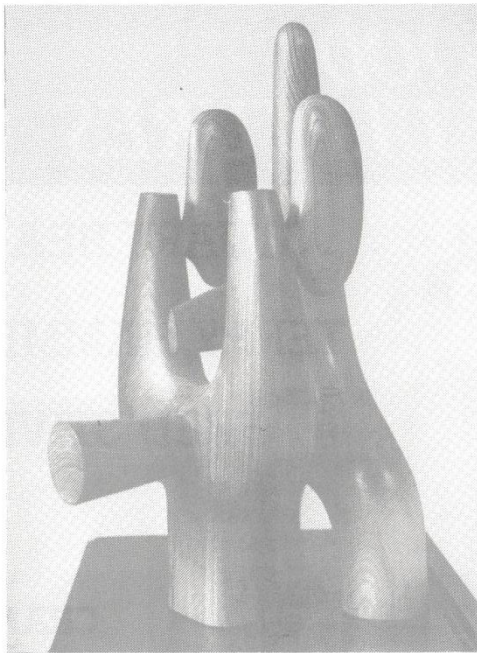


CRAFTS

JEWELLERY

**FOYER
SHOWCASE**

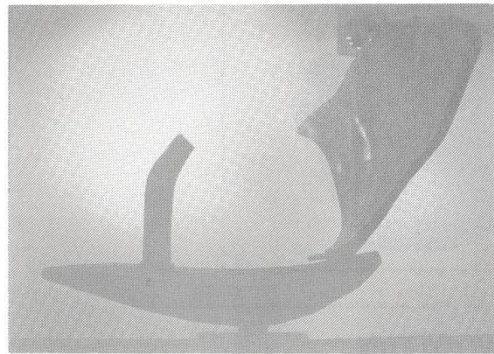
WOOD SCULPTURES



STUART BEATY

Stuart Beaty was born in Ayrshire and studied sculpture at Glasgow School of Art. He was a designer and ultimately Design Director for Pringle Knitwear until 1974 but throughout his design career continued with sculpture, frequently working to commission. He has had a number of exhibitions.

"Whenever I embark on a sculpture in wood I seem to be in a learning situation, since I work directly without preliminary drawings or maquettes. This way one is constantly in and out of trouble but there is always the excitement of discovery and usually the wood takes you where it wants to go in the end."



TERRY HAMMILL

Terry Hammill was born in Dewsbury in Yorkshire, and studied at Batley College of Art and Goldsmith's, London. He lives in Ilkley, and is Head of Art and Design at Jacob Kramer College in Leeds. He has work in public collections in this country and America, and has exhibited extensively both here and in the USA.

FRED STIVEN

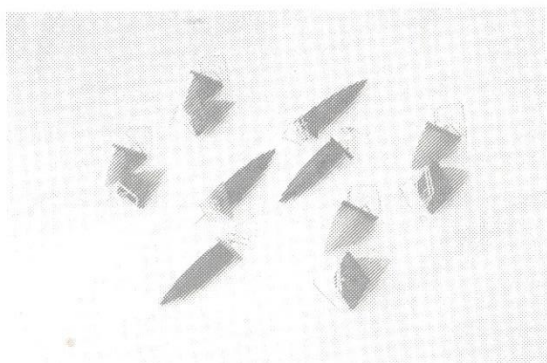
Fred Stiven is a Senior Lecturer at Gray's School of Art in Aberdeen, and a Lecturer at Aberdeen University. He was born in Fife, studied at Edinburgh College of Art and now lives in Aberdeenshire.

He has had many one-man and group exhibitions in Scotland, and his work has also been shown in Ireland and London.

JEWELLERY

ALISON BAXTER

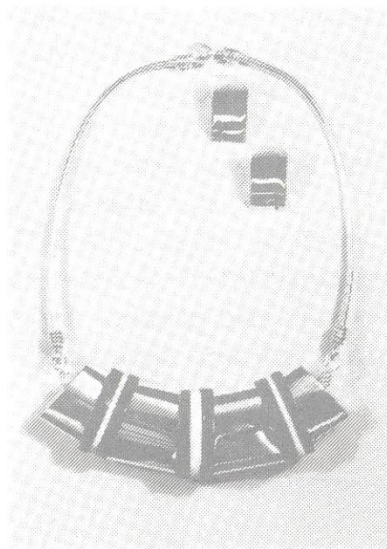
Alison studied at Middlesex Polytechnic and worked in London for three years. Now based in Sussex she employs a number of assistants and her work sells widely throughout Europe and America. Her brightly coloured jewellery combines dyed and printed nylon with silver, and the wide scope of these materials allows for the continuous development of her ideas.



KATE NAYLOR-HIGH

Kate Naylor-High trained at the Sir John Cass School of Art in London and is now based in Lincolnshire.

She works in silver, ebony, ivory and gold, to highly sophisticated modern designs. She has undertaken a number of commissions including several pieces for Yorkshire TV, and she has exhibited in London, Edinburgh, Glasgow, Oxford, Birmingham and Leicester.



THE GALLERY DOWNSTAIRS is Mid-Pennine Arts Association's new gallery. We hope that it will provide schools and colleges with an important educational resource, and we shall welcome contact from teachers interested in bringing in groups of pupils.

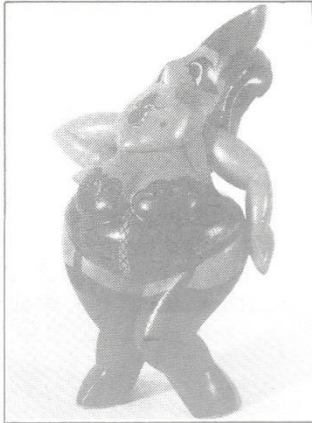
MPAA gratefully acknowledges the financial support of North West Arts, The Boroughs of Burnley, Hyndburn, Pendle, Rossendale, The Township of Todmorden, Yorkshire Arts and Lancashire County Council.



MID-PENNINE
ARTS ASSOCIATION

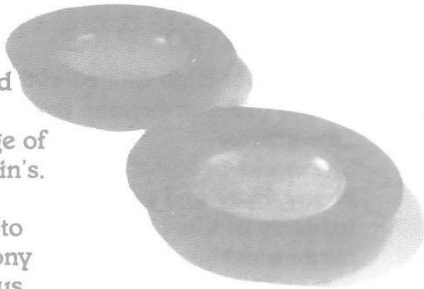
FRANK EGERTON

Frank Egerton trained in ceramics and silver-smithing at Manchester College of Art and began making toys together with his wife Bridget in 1975. Frank teaches at Drumcruon Education Art Centre in Wigan, introducing thousands of children and adults to the processes of toy making. Frank describes his work as "three dimensional cartoons depicting corny jokes".



GUY MARTIN

Guy Martin studied Art and Design at Portsmouth College of Art and at St. Martin's. He has worked as full-time assistant to the sculptor Anthony Caro, and in various areas of design. He is now primarily a furniture maker, but in his large bowls and platters enjoys a freer use of colour in intuitive and spontaneous designs.



TERRY HODKINSON

Terry uses mostly hazel, holly, ash or blackthorn for his walking sticks and crooks, and the decorative horns are usually buffalo, cow, ram or stag. Simple stick-top designs are reproduced by heating and bending the horn while the more elaborate designs of animal heads and snakes are achieved by carving.

GRETEL BARON

Grete's techniques are based on traditional English slipware. The pots are thrown from red earthenware clay, decorated with coloured slips and finished with a shiny clear glaze. Just as the traditional pots were made for every day use, so this sturdy but very attractive kitchenware is made to be used and enjoyed!



ALISON WOOTTEN

Alison's large bold designs are hand-printed and painted in very stylish colourways. The finely woven pure woollen fabric she uses makes her shawls and throws real luxury items. The shawls are finished with a narrow fringe, and the throws are lined and weighted to ensure that they drape beautifully.



FOYER SHOWCASE

JOHN BRADY

John Brady's IMPOSSIBLE CERAMICS are visual puns. The vases, for example, are 3-dimensional interpretations of the way a child might draw a vase. The pots are nevertheless very sophisticated with decoration influenced by Matisse and Mondrian in subtle and restrained colours.