
The
GALLERY
Downstairs

SUMMER 1988



CHARLES SUMMERS

MP MID-PENNINE
ARTS ASSOCIATION

MINSTRELS GALLERY

Saturday 16 April — Tuesday 24 May.

A collection of musical instruments which spans the centuries from 1100 to the present day; instruments designed and used throughout the ages but still produced and played today. Many of the instruments are familiar to us; members of the harp, recorder, violin and brass families.

Perhaps less familiar are the fore-runners of our present-day instruments; clavichord, spinet, and hurdy-gurdy. Equally unfamiliar may be the instruments invented this century.

These will include a Rollerphone and a Strokerphone. The Rollerphone produces sound from ball-bearings rolling over a paper membrane — and if you want to know how a Strokerphone works why not come along to the exhibition?

The exhibition will also include work in progress by some of the makers, as well as tools, materials and photographs.

During the exhibition there will be workshops and demonstrations in the Gallery relating to the making of musical instruments. For further details see under WORKSHOPS AND DEMONSTRATIONS.



MAIN SPACE

INDIA OF 1001 NIGHTS

Saturday 28 May — Saturday 2 July



Photographs by Roland and Sabrina Michaud

Roland and Sabrina Michaud travelled the lands of Central Asia searching for images which would evoke those beguiling stories of a thousand and one nights. Their dreams were fully realised in India and Pakistan and these full-colour photographs present a breathtaking view of lands of legend and dreams. Through images of fields full of cloth drying in the sun, veiled women glimpsed through latticework, silhouettes of caravans at dusk, they depict a world where fantasy and reality meet, where past and present co-incide.

From the John Hillelson Agency, by courtesy of the Zamana Gallery, London.

STATES OF SEIZURE

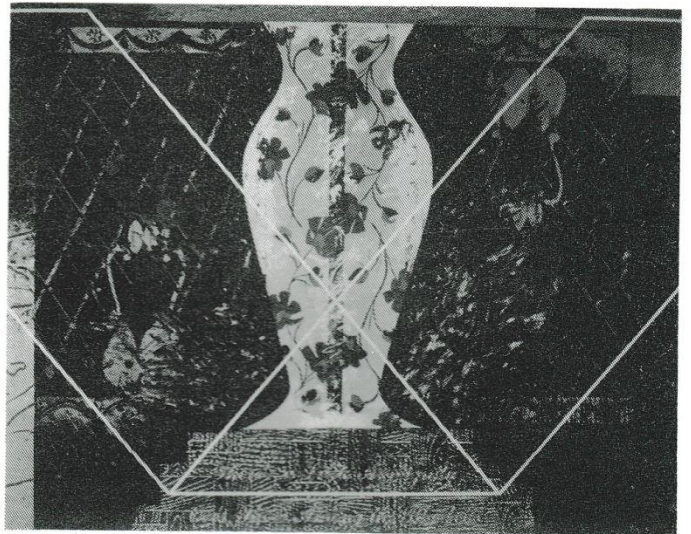
Hanlyn Davies

Saturday 9 July — Tuesday 16 August

'Offset Litho' is a process used to produce most of the commercial print we see around us; magazines, brochures, packaging, posters. It is fast, accurate and economical —and so common in commercial use that it is generally disregarded as a medium for art prints.

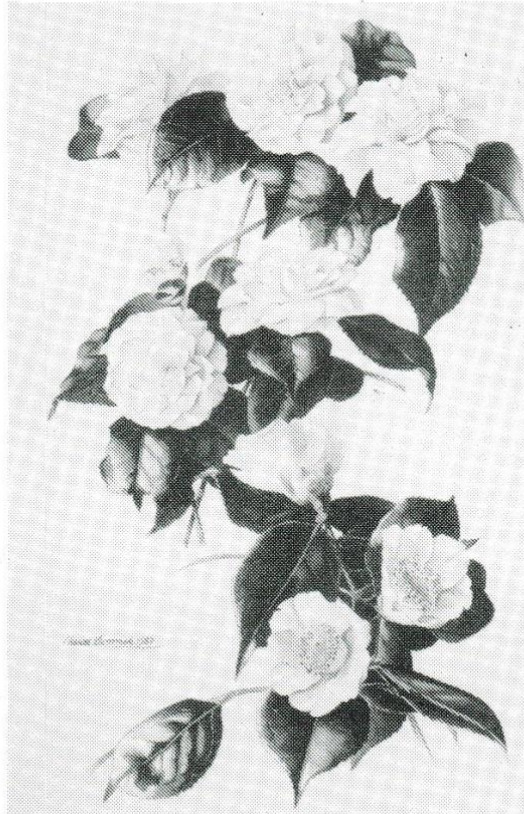
Hanlyn Davies has turned this state of affairs on its head. He uses the precision and control of the offset press to produce very particular and carefully controlled 'inaccuracies', and to produce a whole range of large-scale, colourful and complex images.

A Glynn Vivian Art Gallery Touring Exhibition.



CHARLES SUMMERS

Saturday 20 August — Tuesday 27 September



Charles Summers' watercolour paintings of flowers have won him gold medals from the Royal Horticultural Society, and much admiration from all who see his work. His love of nature is clearly expressed in his minute attention to detail and his careful representation of each delicate bloom. His work is strongly influenced by his travels in South East Asia and South America where he has found a great wealth of material to paint not only flowers and leaves, but also butterflies and insects.

It was in Kashmir and again in Mexico that he saw papier mache being made and used for many purposes both useful and decorative.

He now makes bowls and boxes from papier mache and paper pulp. They are light, very strong, (and ecologically acceptable as they are made from recycled paper).

He decorates the boxes with a great abundance of natural forms in the manner of oriental lacquerwork. The result is objects of great practical use glowing with all the colours of the Orient.

JEWELLERY SHOWCASE

MAY
JUNE

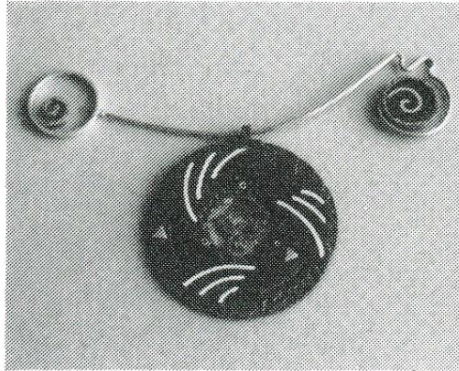
Saturday 21 May
— Tuesday 28 June

Alison Varley

Taking her ideas from Japanese sword fittings and other armour decoration, Alison works in silver and blackened monel metal inlaid with contrasting metals.

Pamela Rawnsley

Pamela works in mixed metals; silver, copper, occasionally gold, and most recently in patinated bronze. Her designs are reminiscent of ornaments of ancient civilizations.



Pamela Rawnsley

JULY

Saturday 2 July — Tuesday 2 August

Sue Common

Several different ranges of matching earrings, bangles and necklets using handbeaten silver, brass and copper and incorporating ivory, abalone, or leather.

Julie Ann Comley

Dozens of different designs for earrings, brooches, necklets and pendants in silver or titanium. Julie uses simple geometric shapes, complex interwoven designs and tree and flower abstracts.

AUGUST

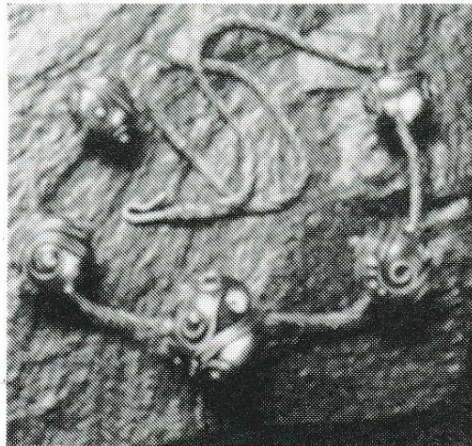
Saturday 6 August
— Friday 2 September

Lucy Copleston

Lucy makes intricately decorated silver beads which she then combines into necklaces and bangles. All her work is customised one-off pieces.

Nicky McGarry

Jewellery design to add detail to clothing or hair. Brooches, necklaces, hairclips and earrings in porcelain. Nicky's 'Clover' range is based on the Irish Shamrock.



Lucy Copleston

SEPT.

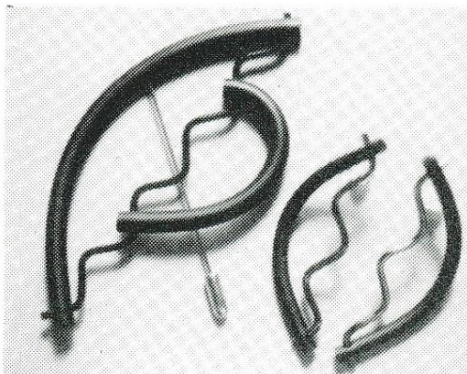
Saturday 3 September
— Monday 3 October

Frances Allinson

Bracelets in fine silver with delicately made hinge details, and boldly designed earrings in silver and anodised aluminium with design ideas taken from various kinds of knives.

Mandy Nash

Figurative designs for earrings and sweater-pins in anodised aluminium, and coloured abstract designs incorporating pvc, suede, nylon and various yarns.



Mandy Nash

POTSTOP

MAY
JUNE

Saturday 21 May
— Tuesday 28 June

JOHN CALVER

A wide range of functional and decorative stoneware, decorated by slip-trailing and stamping partially dry clay. Glazes are applied to the bisque-fired work by dipping and pouring. John's new work includes extruded forms and glaze-trailed decoration.



JULY

Saturday 2 July — Tuesday 2 August

ROBIN & JANE HANSELL

An exclusive, quality range of oven-proof tableware. Striking shapes and colours in terracotta and glazed stoneware. Their decoration is an interesting combination of geometric and organic forms in rich earthy glazes.

AUGUST

Saturday 6 August
— Friday 2 September

KAREN ATHERLEY

"Love of colour, humour and figure representation inspire the archaic art forms which I study, absorb and make my own. My red earthenware forms are decorated with coloured slips and glazed to earthenware temperatures."



SEPT.

Saturday 3 September
— Monday 3 October

MIKE FRANCIS

His initial training as a fine artist is one of the major influences on Mike's work. Each piece is a surface to receive decoration. His design sources range from traditional Chinese jars and medieval English slip decorated pots to Abstract Expressionism and comic strip images.

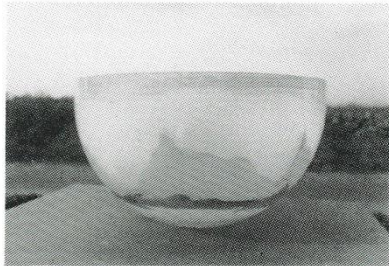


CRAFT SHOWCASE

APRIL—MAY

GLASS

Saturday 16 April — Tuesday 24 May



Charles Bray

Charles Bray

Charles Bray's smooth round bowls are patterned with tranquil landscapes in subtle colours, reflections of Cumbria where he lives and works.

Tessa Clegg

These glass bowls, cast in the kiln by the lost wax method are characterised by their unusual pleated effect and sand-blasted texture.

James Denison-Pender

Finely detailed figurative work in stipple engraving on lead crystal. Much of his work is of wild-life scenes.

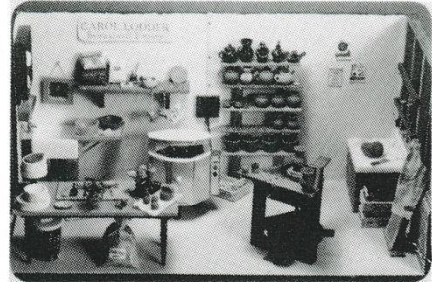
Annabel Porter

A method of sand-blasting through folded and crumpled chicken wire produces fine tracery and filigree patterns in this delicate work.

JULY—AUGUST

MINIATURES

Saturday 9 July — Tuesday 16 August



Carol Lodder

Dolls houses are "miniatures" we are all familiar with, and the tiny objects that go into them have an undeniable fascination — minute replicas of all the paraphernalia of daily life.

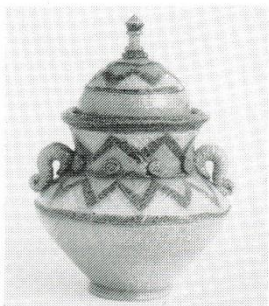
The craftsmen exhibiting this month seem to make, between them, everything that goes to make a well-equipped dolls-house; furniture and pottery, fire-grates and cookers, even tiny hand-bound books and teddy bears.

Room settings kindly lent by The Museum of Childhood, Ribchester.

MAY—JULY

CERAMICS

Saturday 28 May — Saturday 2 July



Carole Scott

Carole Scott

Salt-glazed pots of character, made by various hand-building techniques, and decorated by inlaid coloured clays and roulettes.

Barbara Collins

Designs based on the art and craft of ancient Egypt, made by coiling and press-moulding. Decoration by sgraffito and sprigging with glazes, slips, engobes and wax resist applied with a slip-trailer brush or palette knife.

John Dunn

John specialises in large raku bowls (18" diameter) and dishes (23" diameter). His use of vibrantly coloured glazes is influenced by glass technology.

AUGUST—SEPT.

MIXED CRAFTS

Saturday 20 August — Tuesday 27 September

Gordon Cooke — ceramics

Delicate small scale pots and sculptural objects. A pattern is scored into a clay slab coated with metal oxide. The clay is then rolled to distort the pattern before the pot is assembled.

John Anderson — framed mirrors

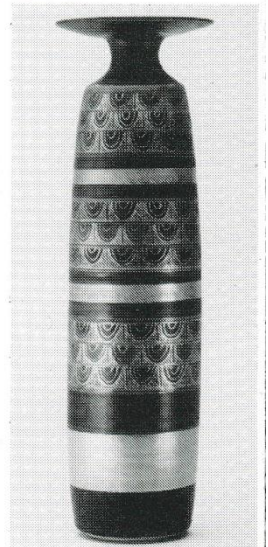
John Anderson makes boxes and pictures in carved and painted wood. His mirrors have broad wooden frames lavishly painted in rich glowing colours, making full use of the wood grain.

Angela Musil — textiles

Angela works in wool and silk to make ties, bow-ties, shawls and scarves. Her gossamer-fine wool shawls are hand-painted so that each one is unique.

Mary Rich — ceramics

Thrown porcelain bowls and vases in elegant formal shapes. Mary's designs have many influences but that of Islamic art is particularly strong. Her surface decoration uses dark colours combined with metal lustres.



Mary Rich

WORKSHOPS & DEMONSTRATIONS

AUTOMATA

Frank Nelson

Cornholme Junior School.

Wednesday 4 May 1.30 – 3.30 pm

Frank Nelson makes colourful and humorous automata – mechanically animated wood-carvings. He also has a collection of antique automata. During his visit to the school, he will show the children some of his collection and talk about how the figures are made and how they move.

A joint promotion with Cornholme Junior School

MAKE MUSIC FROM JUNK

Red Water Arts

The Gallery Downstairs

Saturday 7 May 10.00–12.00 1.00–3.00

In this workshop you can make a musical instrument from unwanted materials and go home blowing your own trumpet – well may be not quite! But you will have a choice of instruments to make – shakers, drums, or tuned percussion for the more ambitious – and you will have a lot of fun!

This workshop is for adults and children but please note:

Children must be 8 years old or over and accompanied by an adult.

Cost for the whole day not including lunch £3.50.

Closing date for registration Wednesday 4 May.

DEMONSTRATION FOR 6TH FORM STUDENTS

Charles Summers

The Gallery Downstairs

Friday 2 September

Charles Summers, whose watercolours and lacquerwork will be on display this month will give a demonstration for sixth form students. He will have a range of work in progress at different stages, and will demonstrate how he makes his papier mache bowls and decorates them by the oriental art of lacquerwork.

Any teacher wishing to bring pupils to this demonstration should contact Sheenagh on 21986 as soon as possible.

SEE HOW ITS DONE

The Gallery Downstairs

David Vernon – Violin-maker

Saturday 23 April 10.00–12.00 1.00–3.00

David Vernon makes and restores instruments of the violin family. What are the secrets of the violin-makers craft? What is so special about a Stradivarius? David will be in the Gallery to demonstrate some of the skills of his ancient and very specialised craft – and to answer visitors questions.

Neil Brook – 'Hurdy Gurdy Man'

Saturday 14 May 11.30–1.00 1.30–3.00

Neil Brook makes Hurdy-Gurdies – not the barrel-organs of last century but a stringed instrument with keyboard which dates back much further, though it is still used today for Early Music and Folk performances.

Between tunes Neil will be ready to chat about making and playing Hurdy Gurdies.

Charles Summers – Papier Mache and Lacquerwork

Saturday 3 September

Member of the public are welcome to visit the exhibition of watercolours and lacquerwork by Charles Summers, and to meet the artist.

He will be talking about his work and demonstrating how he makes his bowls and boxes from papier mache and how he decorates them with lacquerwork.

Admission to all three demonstrations FREE.

OUT & ABOUT

OUT OF THE FOREST

The sculpture project at Grizedale Forest provides a working environment for sculptors. Since its beginning in 1977, an amazing body of work has been built up by a succession of sculptors. Although all the pieces are sympathetic to the forest landscape they nevertheless demonstrate a refreshing diversity of approach.

Saturday 9—Saturday 30 July
Public Library, Haslingden

Saturday 6—Sunday 28 August
Haworth Art Gallery, Accrington
A Northern Centre for Contemporary
Art Small Scale Touring Exhibition



ASIAN ARTS & CRAFTS EXHIBITION

Civic Hall, Stanley Street, Nelson
Monday 22—Saturday 27 August

A celebration of Pakistani Culture. This colourful and fascinating exhibition of the crafts of Pakistan offers a wonderful chance to enjoy the exquisite workmanship in their intricate woodcarving and highly ornate silver, brass and enamel ware, along with beautiful leatherwork, embroidery, calligraphy and jewellery.

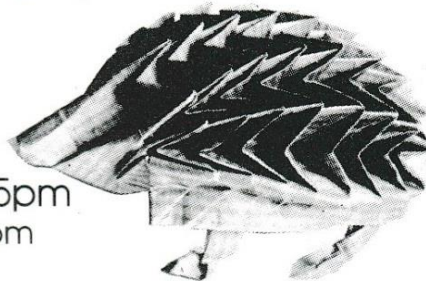
Open Monday — Wednesday 10—5
Thursday, Friday 10—7.30
Saturday 10—4

Presented in Association with the
Pakistan Welfare Association
(Nelson)



Accrington and District Bonsai Society Annual Show

Saturday 18 June 10 am—5pm
Craft Demonstrations 11am—4pm

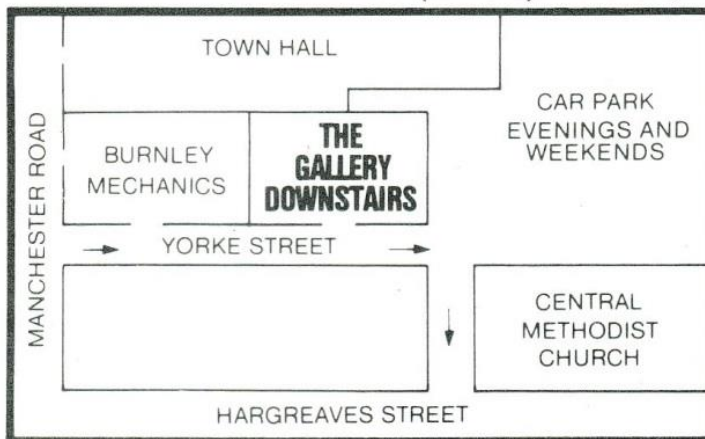


To complement the Japanese art of Bonsai Wayne Brown will demonstrate Origami, the very precise and very versatile art of paperfolding, and David Ives will demonstrate kitemaking, another skill which has a long history and tradition in Japanese culture.

MID-PENNINE ARTS ASSOCIATION

THE GALLERY DOWNSTAIRS

YORKE STREET, BURNLEY, BB11 1HD
TELEPHONE: BURNLEY (0282) 21986, 29513



MPAA's Offices are open
Mon - Fri 9-5
Closed Mon, Tue May 2, 3
Mon, Tue May 30, 31
Mon, Tue Aug 29, 30

The Gallery Downstairs is open
Mon - Fri 10-7.30
Sat 10-4
Sun 2-4
Bank Holiday Mons & Tues 10-4

GOOD NEWS!

We can now accept ACCESS and VISA cards for Gallery purchases and tickets bookings. You won't need your cheque book any more!



TO ALL TEACHERS

At The Gallery Downstairs we try to increase enjoyment and understanding of the contemporary visual arts for the whole community. With developments in the Gallery's programme we are able to offer facilities for practical workshops, study sessions, talks and seminars both to schools and colleges and other interested groups. Unfortunately it is necessary to close the Gallery for a few days between exhibitions and occasionally children sent by teachers have been disappointed not to see an exhibition. A quick phone call to check that we are open can ensure that there is an exhibition on show and that someone is available to give help if necessary.

Mid-Pennine Arts Association gratefully acknowledges the financial assistance of the Borough Councils of Burnley, Hyndburn, Pendle and Rossendale, the Town Council of Todmorden, North West Arts, Association and Lancashire County Council.



The information in this brochure is correct at the time of going to press but MPAA reserves the right to cancel or amend programme due to unforeseen circumstances.