
The
GALLERY
Downstairs

— SPRING 1988 —

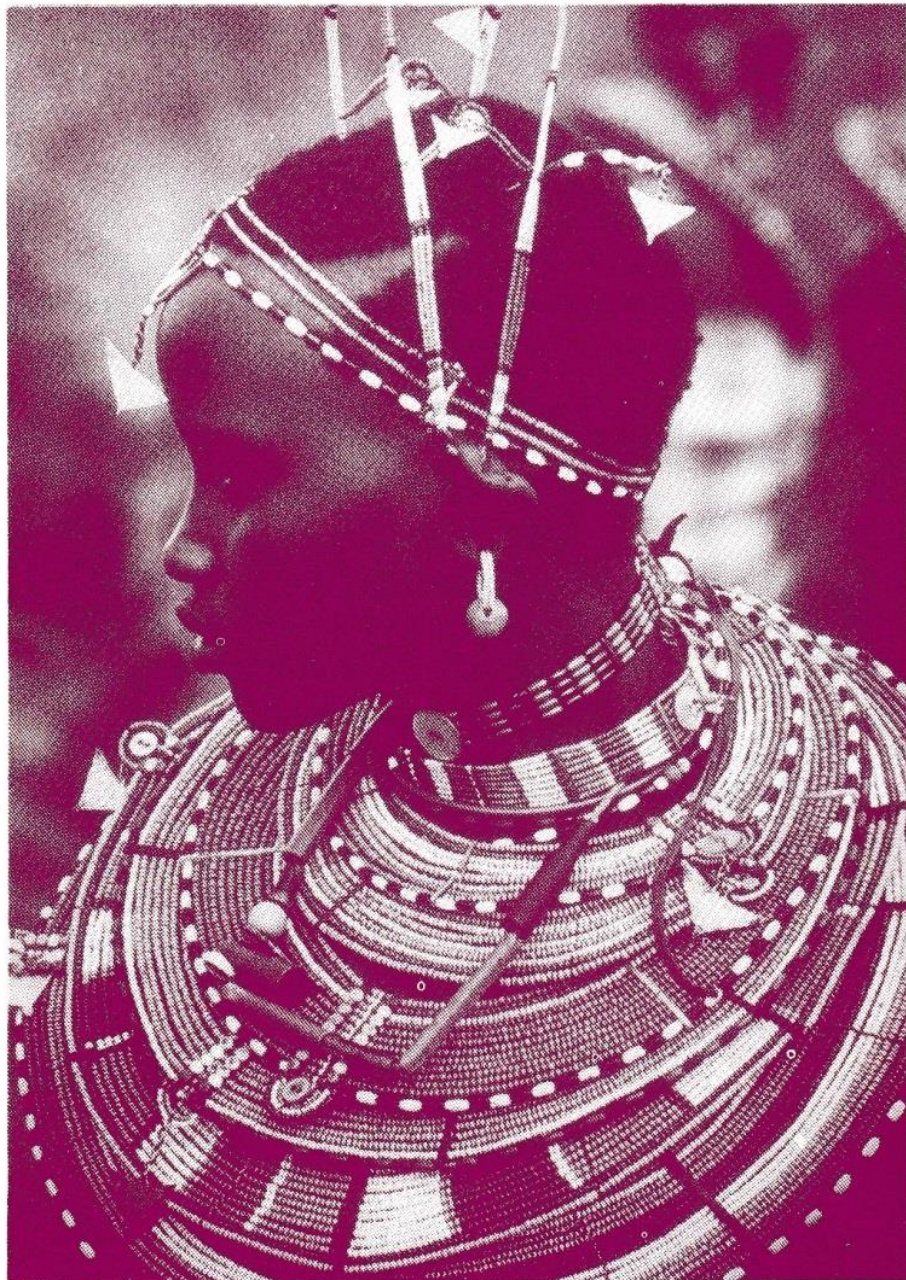


Photo:- George Rodger — The World Over

MID-PENNINE
ARTS ASSOCIATION

The GALLERY GALLERY GALLERY G

JANUARY

GEORGE RODGER — THE WORLD OVER

Photojournalism from 1936 to the present day.

Thursday 7 January — Tuesday 2 February

In a lifetime of travelling and photographing, George Rodger has built up a unique body of work that has earned him a place as one of the most important figures from the classical age of photojournalism.

During the war he worked for Life Magazine but in 1945, finally sickened by the horrors of war, he left Life and set off for the Middle East. With Robert Capa, Henri Cartier-Bresson and others he founded the picture agency Magnum and found a ready market for his photo-reportage of Africa, the Caribbean, the Far and Middle East.

Both his war photography and his later work are characterised by a "simple uncomplicated pictorial approach" and uncompromising integrity.

This major exhibition of 120 photographs is the first comprehensive showing of his work and its showing at The Gallery Downstairs will be the first outside London.

A Photographer's Gallery, London, Touring Exhibition.

GEORGE RODGER VIDEO

George Rodger is 80 this year. During the exhibition a 40min. video of his life and work will be available for viewing in the gallery. It includes George Rodger himself talking about his work.

Set showing times: Saturdays 10am — 4pm
Sundays 2pm — 4pm
Tuesdays 5pm — 7.30pm

Other times By prior arrangement.

MAINSPACE

KNITWEAR

Thursday 7 January — Tuesday 2 February

JULIE BARKER AND SHEILA BROWN

Designer Knitwear using wool from Charollais sheep reared by Julie's husband David. Intricate geometric designs in rich colour combinations.

KAFFE FASSETT

A wide range of design ideas for men and women using bright and muted colours, 'computer graphics' and geometric designs.

IMKE THOMSON — IT KNITWEAR

Luxury hand-framed knitwear in Shetland, lambswool, mohair or pure cotton; ribs, bubbles, pleats and paisleys — pastels, dark shades or subtle muted tones.

SALLY COOK DESIGNS

Hand-knitted and hand-framed mohair jackets, lined and trimmed with silk in brilliant colours.



Imke Thomson

GALLERY SHOWCASE

FEBRUARY

PAPERMATES

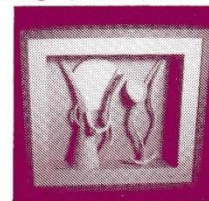
Saturday 6 February —
Tuesday 8 March



Cameron Scott

To artists and craftspeople, paper is no longer merely a flat surface on which to make marks. In recent years paper has become the most flexible and easily manipulated material for both two and three dimensional work. Each artist in this month's exhibition exploits the qualities of paper in a highly individual way and with unique results.

Cameron Scott combines paper pulp and found objects to make his relief wall-pieces, while **Paul Ryan** and **Keith Roberts** add pigment to their pulp which they pour or brush on in a painterly way.



Martin Cronin

Elizabeth Stuart Smith uses pulp like clay to make sculptures, and she also uses sheets of card and cord to make very large brightly coloured constructions.

Martin Cronin uses sheets of paper and card to make his relief boxes, and **Susan Ratcliffe** uses paper ready-mades such as bus tickets and newspapers to



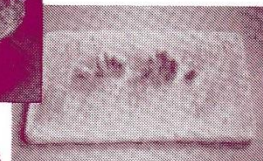
E. Stuart-Smith

make her amusing comments on daily life.



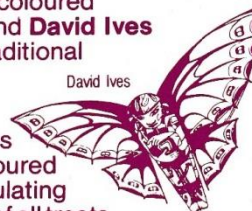
Janice Salmon

Janice Salmon stitches lumps of hand-made paper into long strands for weaving into open basket work for hats.



Sue Ratcliffe

John Lansley makes intricate sculptural jewellery with subtly coloured surface decoration and **David Ives** uses paper as the traditional material for his spectacular kites.



David Ives

Paul Johnson makes intricate, brightly coloured sculptures by manipulating paper which he first of all treats with acid dyes. He also makes books using similar techniques.



Paul Johnson

Work in this exhibition has been selected by **Cameron Scott**.

ALLERY GALLERY GALLERY *Downstairs*

MARCH

BOHUSLAV BARLOW

Saturday 12 March — Tuesday 12 April

Bohuslav Barlow works in Todmorden though he is Czechoslovakian by birth and spent his early years in Bavaria. He insists that he paints reality; views of Todmorden and its surrounding hills, life studies, real objects and life size puppets, but when all these things are assembled in his pictures they suggest an unreal world of dreams and even nightmares.



The observer finds himself asking many questions but Slavo offers no explanations "each picture is its own world and tells its own story". His paintings are fascinating and enigmatic. They are sometimes a little sombre, reflecting his mid-European background. They are occasionally disturbing but always well-painted vividly demonstrating his training, technique and dedication.

COMPETITION — SPOT THE MISTAKE

A distinctive feature of Bohuslav Barlow's work is the placing of real things in unreal situations so nothing looks ordinary or normal, but one of his paintings does have a genuine mistake in it. We are offering a £10 voucher to spend in The Gallery Downstairs for the first correct entry opened on Tuesday 5 April.

APRIL

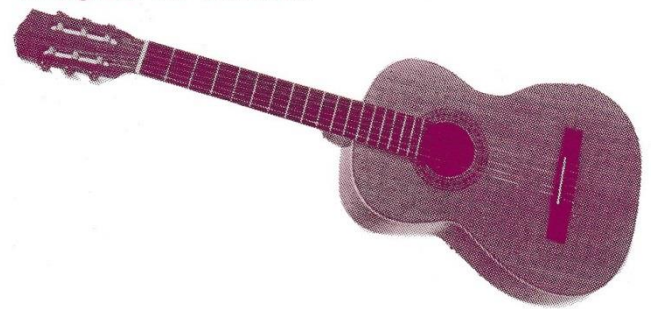
MINSTRELS GALLERY

Saturday 16 April — Tuesday 17 May

This month's exhibition is stately and spectacular! A number of musical instrument makers will have their work on show; some finished instruments, and some work in progress. One of the craftsmen works to designs of the twelfth century, taking his information from drawings and stone carvings of the period. At the other end of the spectrum will be instruments made to today's requirements, and there will also be modern day reproductions of work by early masters.

The range of instruments is very broad; wind, percussion and strings — from harps and harpsichords to oboes and recorders.

There will also be a number of related workshops and events taking place in The Gallery Downstairs throughout the exhibition.



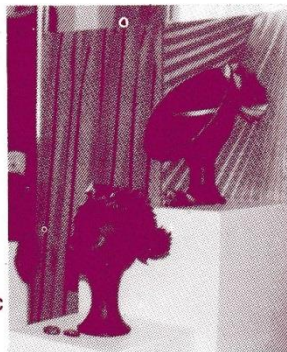
"EASTER BONNETS"

ANNE TOMLIN AND BRIDGET BAILEY

*Saturday 12 March —
Tuesday 12 April*

Anne Tomlin makes hats; chic berets, daring cloches, romantic broad-brimmed creations — a full range of styles and shapes, materials and colours.

Bridget Bailey uses paper moulds to pleat hand-dyed silks to create unique and exquisite fashion accessories. Individually or in collaboration their work is stunning.



GLASS

*Saturday 16 April —
Tuesday 17 May*

CHARLES BRAY

Charles Bray's smooth round bowls are patterned with tranquil landscapes in subtle colours, reflections of Cumbria where he lives and works.

TESSA CLEGG

These glass bowls, cast in the kiln by the lost wax method are characterised by their unusual pleated effect and sand-blasted texture.

JAMES DENISON — PENDER

Finely detailed figurative work in stipple engraving on lead crystal. Much of his work is of wild life scenes.

ANNABEL PORTER

A method of sand-blasting through folded and crumpled chicken wire produces fine tracery and filigree patterns in this delicate work.



Jewellery Showcase

JANUARY

Thursday 7 January —

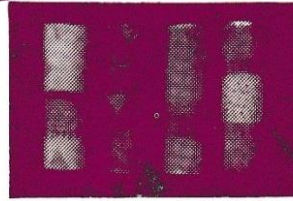
Tuesday 2 February

SHEILA McDONALD

Much of this fun jewellery is enamel on silver, using simple geometric patterns in rich colours combined with fine gold wire and gold leaf.

JUJUBE

Three different ranges of jewellery offering co-ordinating bangles, necklaces and earrings in fresh, bright colours or dramatic black.



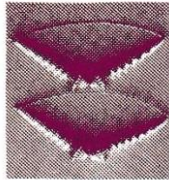
Sheila McDonald



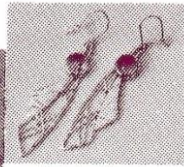
Jujube

FEBRUARY

Saturday 6 February —
Tuesday 8 March



Nuala McCann



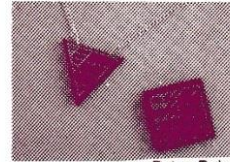
Valerie Mead

VALERIE MEAD

Work in varied precious metals, often combining two or more metals in the same design and also incorporating semi-precious stones.

NUALA McCANN

Innovative and original jewellery in geometric designs, many of which combine unusual materials; rubber, stainless steel and brass.



Peter Relph

MARCH

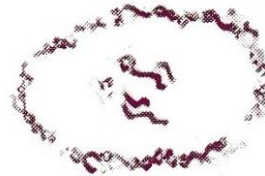
Saturday 12 March —
Tuesday 12 April

PETER AND LESLEY RELPH

Peter makes rosewood jewellery inlaid with fine silver and gold. Lesley's bright geometric designs are worked in titanium and niobium.

ANNE-MARIE SHILLITO

Jewellery in which the qualities of titanium niobium and tantalum constantly inspire new techniques and changes of direction.



Anne-Marie Shillito

APRIL

Saturday 16 April —
Tuesday 17 May

SUE BARR

Bold shapes and bright colours distinguish these earrings and brooches in combinations of silver, anodised niobium and aluminium.



Sue Barr

DEBBY MOXON AND IAN SIMM

This range of 'folded' jewellery combines titanium and silver produce very sophisticated designs; precise pieces with subtle decoration.

POTSTOP

BURNLEY MECHANICS FOYER

JANUARY

*Thursday 7 January —
Tuesday 2 February*



DART POTTERY

Studio pottery produced exclusively to designs by Janice Tchalenko. A full range of tableware which sells all over the world.

FEBRUARY

*Saturday 6 February —
Tuesday 8 March*



VICTORIA AND MICHAEL EDEN

A range of slipware pots in bright lively designs which make them both useful and fun to have around.

MARCH

*Saturday 12 March —
Tuesday 12 April*



MICHAEL AND BARBARA HAWKINS

Pots which are both functional and decorative with designs influenced by many traditions from Minoan Crete to Art Deco.

APRIL

*Saturday 16 April —
Tuesday 17 May*



ROBERT GOLDSMITH

White stoneware with lustrous blue and brown surface decoration, some abstract, some figurative, influenced by such artists as Matisse.

WORKSHOPS AND DEMONSTRATIONS

PAPER MAKING DEMONSTRATION

JANICE SALMON

THE GALLERY DOWNSTAIRS

Saturday 13 February 10am — 12.30pm, 1.30 — 4pm

ADMISSION FREE

Janice makes very attractive and unusual decorative bowls and hats from paper pulp which she moulds to the required shape. She makes the pulp herself from cotton rags and plant materials which she boils in a solution of caustic soda and then pulps in a domestic blender.

Janice will also lead a paper making workshop for students at Burnley College on Tuesday 16 February.

The workshop will be presented in association with Burnley College.

PAPER SCULPTURE FOR JUNIORS

SUE RATCLIFFE

THE GALLERY DOWNSTAIRS

Monday 15 February 10am — 3pm with lunch break

Sue, whose paper sculptures will be included in the main exhibition at The Gallery Downstairs during February, will lead a full day paper sculpture workshop for junior school children in the gallery, with a half day follow-up session in school on Monday 22 February.

This workshop will be available to the first school to apply. Please contact Sheenagh on Burnley 21986.

PAPER SCULPTURE WORKSHOPS IN SECONDARY SCHOOLS

ELIZABETH STUART SMITH

Elizabeth, whose work is included in the main exhibition at The Gallery Downstairs during February, would like to lead workshops using paper pulp as an art form in secondary schools. The workshops will be available to the first schools to apply.

Any teacher interested please contact Sheenagh on Burnley 21986.

HAT MAKING AND SILK PLEATING WORKSHOP

ANNE TOMLIN AND BRIDGET BAILEY

THE GALLERY DOWNSTAIRS

Saturday 19 March. 10am — 4pm

COST £5

Anne and Bridget, whose hats and accessories are in the Gallery Showcase this month, will lead this workshop. If you would like to learn some of the secrets of millinery or how to make exotic swathes of finely pleated silk for trimmings and accessories why not come along and join us?

Closing date for registration Saturday 12 March.

SEE HOW IT'S DONE

ADMISSION FREE

Handcrafted things are lovely to have around, and our enjoyment of them is even greater if we know a little about how they are produced.

This season we shall have two craftspeople visiting the gallery to demonstrate their particular crafts.

Saturday 12 March 10am — 4pm

BRYAN CALLAGHER
CALLIGRAPHY

Saturday 9 April 10am — 4pm

LOUISE NELSON
CUSHIONS AND JEWELLERY

FELT MAKING WORKSHOP

ANNE-MARIE CADMAN

NELSON AND COLNE COLLEGE

Scotland Road, Nelson

Wednesday 17 February. 6pm — 9pm

Felt is made by subjecting wool fibres to a combination of heat, moisture and friction, but controlling and manipulating this process to produce decorative and useful objects is quite easy and can be fun. Ann-Marie will show students at the College how easy and how much fun!

Presented in association with Nelson and Colne College.

TOURING EXHIBITIONS

LOCK POUND AND SUMMIT

PHOTOGRAPHS BY BEN E. SHAW

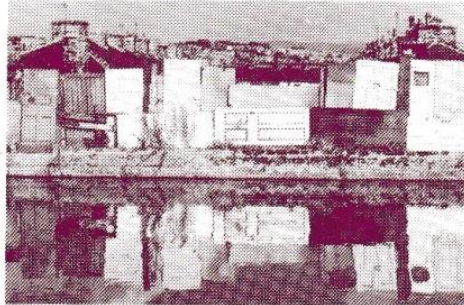
LANCASHIRE POLYTECHNIC, PRESTON

Thursday 21 January — Wednesday 17 February

ADMISSION FREE

A series of photographs documenting the past and the present of the Leeds and Liverpool Canal, with a look also at a new future promised by conservation schemes and community

projects. Ben Shaw has found pattern and design, romance and history in man-made structures, as well as beauty and form in the plant life of the canal.



PASSAGES OF TIME

PHOTOGRAPHS BY CHARLIE MEECHAM

BURNLEY COLLEGE

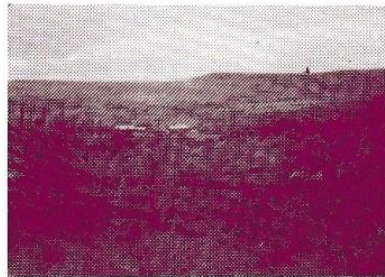
8 February — 4 March

BARROWFORD PUBLIC LIBRARY

7 March — 31 March

This exhibition, which was specially commissioned by Mid-Peninne Arts Association in 1984,

explores through colour photography the changes to our landscape caused by the advance of civilization; pathways, tracks, railroad and canal, features which give North East Lancashire its distinctive character.



CRAFT SHOWCASE

ANNE-MARIE CADMAN

NELSON AND COLNE COLLEGE

Scotland Road, Nelson

Monday 1 — Saturday 27 February



Anne-Marie works in several materials. She makes scarves, jewellery and other fashion accessories from silk, which she screen prints herself. She also makes felt which she shapes into simple hats. All her work is characterised by her large, free abstract designs and brilliant colours.

Anne-Marie will lead a workshop for students at the college on Wednesday 17 February. For full details SEE WORKSHOP SECTION.

POINT COUNTERPOINT

Written and narrated by David Thompson, produced and directed by Anne Turner

NELSON AND COLNE COLLEGE

Linden Road, Colne

Tuesday 8 March. 7.00pm

ADMISSION FREE

A film study of the work of Georges Seurat from his early black and white drawings to his manipulation of colour and the development of his pointillist technique. The film includes comments by Henry Moore and Bridget Riley and deals with some of his individual paintings in detail.

Presented in association with Colne Art Group

TO ALL TEACHERS & ORGANISERS
At The Gallery Downstairs we try to increase enjoyment and understanding of the contemporary visual arts for the whole community. With developments in the Gallery's programme we are able to offer facilities for practical workshops, study sessions, talks and seminars both to schools and colleges and other interested groups. We would welcome enquiries from any teachers, lecturers and organisers about the services we can offer.

ACKNOWLEDGEMENTS

Mid-Pennine Arts Association gratefully acknowledges the financial assistance of the Borough Councils of Burnley, Hyndburn, Pendle and Rossendale, the Town Council of Todmorden, North West Arts, Yorkshire Arts Association and Lancashire County Council.



WHEELCHAIR ACCESS

PLEASE NOTE

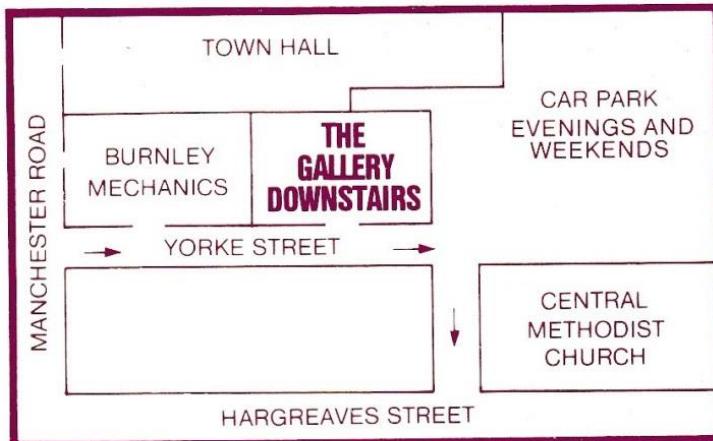
The Gallery Downstairs has wheelchair access from the car park, and we are delighted to welcome individuals and parties from any disability group into the gallery for exhibitions and workshops.



The GALLERY Downstairs

THE GALLERY DOWNSTAIRS

YORKE STREET, BURNLEY, BB11 1HD
 TELEPHONE: BURNLEY (0282) 21986, 29513



MPAA's offices are open Monday to Friday 9 — 5
 The Gallery Downstairs is open
 Monday to Friday 10.00 — 7.30
 Saturday and Bank Holidays 10.00 — 4.00
 Sunday 2.00 — 4.00
 Easter Monday and Tuesday as Saturdays
 Closed Good Friday

GOOD NEWS!



We can now accept ACCESS and VISA cards for Gallery purchases and ticket bookings. You won't need your cheque book any more!



Her Majesty the Queen visiting The Gallery Downstairs

Photo by: Norman Edwards Associates (Manchester) Ltd.