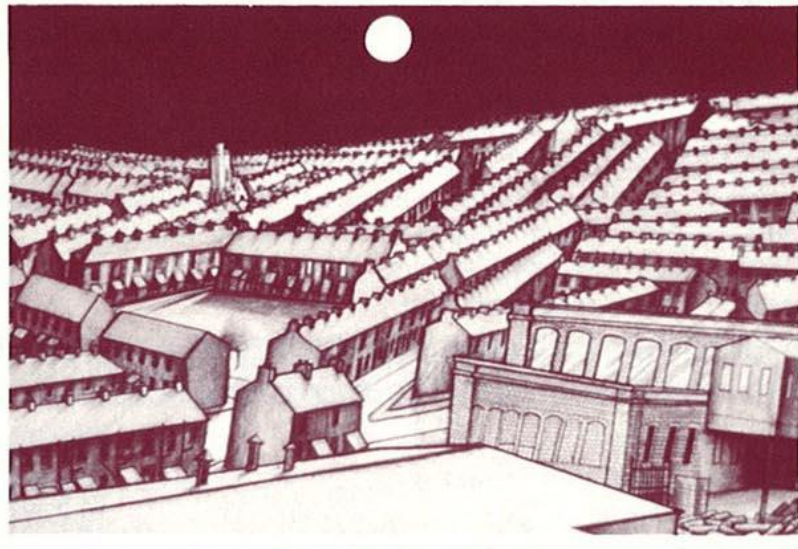
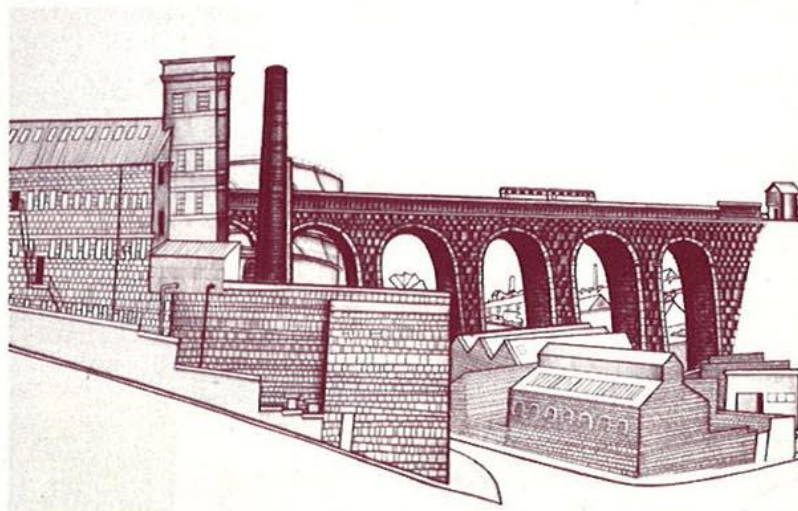


MID-PENNINE ARTS ASSOCIATION



'Painting the Town' - Burnley

Willie Rodger

SEPT E M B E R
&
O C T O B E R
89

M

THEATRE



Compass Theatre Company

G.W. THEATRE

Monday 25 September 7.30pm
 Whitewell Bottom Youth & Community Centre
Tuesday 26 September 7.30pm
 Padiham Youth Centre
Wednesday 27 September 7.30pm
 Early Youth Club, Community Centre

Admission: £2.00**Concession: £1.00****Youth Club Members free**

When a former long-stay resident of the local psychiatric hospital is re-settled into "the community", the community is anything but pleased and one of its leading members, a violent and unstable 20 year old, takes it upon himself to deal with the unwelcome neighbour.

But the "loony" has salvaged a wisdom from madness and the confrontation leads to a dramatic conclusion that is both challenging and unsettling.

**TIPPENCE
SHORT**

Loudmouth Mime Theatre Co

"THE DELIVERY MAN"

Wednesday 4 October 7.30pm
 Moorhead High School, Accrington

Admission: £3.00**Concession: £2.00**

Delivery Man – a modern Faust tutored by a diabolical accomplice weaves in and out of the world's weaknesses – heroin and cocaine. This story is both humorous and painful with a love affair that occasionally gets angry.

'Loudmouth remain one of the cleverest and most original touring groups on the scene today' (Liverpool Daily Post)

Pupils from Moorhead and St Christopher's High Schools will attend a workshop with Loudmouth Mime Theatre Company during the afternoon.

Presented in association with Moorhead High School and supported by North West Arts.





COMPASS THEATRE COMPANY

Thursday 12 October 7.30pm

Nelson & Colne College

Admission: £3.00

Concession: £2.00



A tale of disorder, intrigue and revenge as Hamlet wrestles with his responsibilities towards his country, family and friends. A story of ghostly endeavours as characters are sucked into the decay and depravation of the state of Denmark.

Shakespeare's greatest tragedy is brought powerfully to life by COMPASS THEATRE.

Presented in association with Nelson & Colne College and supported by North West Arts.

Hamlet



TIC TOC THEATRE COMPANY

Thursday 19 October 8.00pm

New Era Youth Centre, Accrington

Admission: £2.50

Concession: £1.50



SCHOOL'S OUT



Rich is a red brick graduate. A working class lad who's made good earning a living by writing about his past. He's back in his home town to see his old friends, Kath and Mick, and here the trouble starts as old wounds are opened...

With musical contributions from Alice Cooper, Talking Heads and Vintage Clash, TIC TOC THEATRE COMPANY return for another exciting, amusing and thought provoking evening's entertainment with this play by Jon Gaunt.

Presented in association with New Era Youth Centre and supported by North West Arts.

THE WITHERED ARM

Friday 27 October 7.30pm

Civic Hall, Clayton-le-Moors

Admission: £3.00

Concession: £2.00

Party Rate: £1.00



THEATRE
ALIBI

The milkmaids, farmers and gentry who inhabit Hardy's Wessex grip the imagination in this vivid adaptation of three of Hardy's stories. Specially composed live music and striking imagery capture the very essence of the author's finest works in this excellent production by THEATRE ALIBI.

'All the vividness of a broadside ballad' (The Guardian)

Supported by North West Arts.

COMEDY & CABARET

LES BUBB

Thursday 28 September 8.00pm
Accrington & Rossendale College,
Rawtenstall Campus

Admission: £3.00

Concession: £2.00

Star of TV's 'FRIDAY NIGHT LIVE', LES BUBB explodes into action in this fast forward visual comedy of earthly observations. "Another Fine Mess" examines the environment and winces! From domestic to galactic, from sink to ocean, our hapless hero snaps into a breakneck journey round the warts of our ecological mismanagement.

New musical technology, digital voice techniques – movement at the speed of light. LES BUBB presents a major comedy of tragic proportions.

Presented in association with Accrington & Rossendale College and supported by North West Arts.



*Sensible
footwear*

SPIT IT OUT

Tuesday 10 October 8.00pm
White Hart Hotel, Todmorden

Admission: £3.00

Concession: £2.00



Three inventive, sure footed ladies who return with their funny, pertinent observations on the realities of women's lives: from Tupperware parties to Brown Owl and witches, and of course the ongoing battle of the sexes. Over an hour of glorious uninhibited comedy and surprises.

Presented in Association with Yorkshire Arts

THE CHUFFINELLES 'Too Hot to Handle'

Friday 20 October 8.30pm
Haslingden Trades Union Club, Regent Street, Haslingden.

Admission: £2.00

Concession: £1.00

Ninety minutes of pure mayhem with this daring female comedy trio. THE CHUFFINELLES will take you on a glorious rampage through Britain and the world. Nothing is sacred – from royalty to the rich, from apartheid to nuclear power. A brilliant night out – come and see why The Chuffinelles are "Too Hot to Handle".

Presented in association with Haslingden Folk Club.



DANCE

A STRANGER DISINTEGRATES

Monday 9 October 8.00pm
Accrington & Rossendale College
Rawtenstall Campus

Admission: £3.00

Concession: £2.00



Follow an ordinary man through his day: at work, on the bus, in the street, "A Stranger Disintegrates" reveals the insanity of normal behaviour in this fast moving fusion of dance, sign theatre, music and poetry.

COMMON GROUND DANCE THEATRE are an exciting and unique company of deaf and hearing performers, who combine their disciplines to challenge our preconceived ideas about communication.

The company will undertake a workshop during the day for participants with impaired hearing.

Presented in association with Accrington & Rossendale College and supported by North West Arts.

COMMON GROUND
DANCE THEATRE



VESELKA Ukrainian Dance Company

Sunday 29 October 7.30pm
College Theatre, Burnley College

Admission: £2.00

Concession: £1.00



Veselka are the leading Ukrainian dance ensemble in Britain. Thirty-five dancers and musicians will perform pieces from: The Central Kiev, Narodniy and Poltava regions of the Ukraine.

Renowned for their excitement and vigour the group have performed at festivals and folk concerts in the United Kingdom and Europe.

If you enjoy colourful and spectacular folk dancing we promise an evening to remember.

Presented in association with Burnley Peace Committee.



LITERATURE

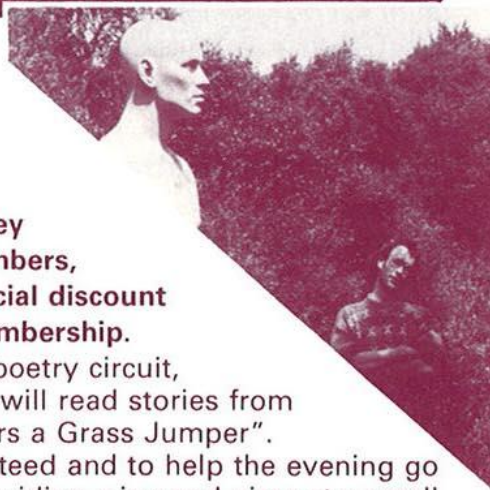
GARY BOSWELL

*Your Pizza's
Going Cold*

Monday 30 October 7.30pm
The Gallery Downstairs, Burnley
Admission: free to MPAA members,
non-members may join at special discount
rate of £2.50 for individual membership.

Well known and loved on the poetry circuit, the irrepressible Gary Boswell will read stories from his new book, "Wax Man Wears a Grass Jumper".

A unique experience is guaranteed and to help the evening go with a swing MPAA will be providing wine and pizza at a small charge.





The Manchester Camerata



THE MANCHESTER CAMERATA

Leader: Richard Howarth

We welcome our new orchestra, The Manchester Camerata, which has become an established part of the nation's musical life since its foundation in 1972. The Orchestra performs over 100 concerts a year throughout the United Kingdom and abroad. In their hometown they frequently play to capacity audiences at the Royal Northern College of Music and the Free Trade Hall; a debut at the Hallé Proms in June this year reflects their continuing success.



Richard Howarth

Ticket prices for the series are as follows:-

Single concerts: Balcony £5.00 Concession £4.00
Stalls £4.00 Concession £3.00

Season tickets: (5 concerts for the price of 4)
Balcony £20.00 Concession £16.00
Stalls £16.00 Concession £12.00

MPAA members may claim the concessionary price and may reserve their favourite seat for the entire series.

FAMILY TICKET DISCOUNT: Two adults buying tickets, for individual concerts or the series, may bring two children for the price of one.

Bar available.



Presented with financial assistance from Pendle Borough Council.

COLNE ORCHESTRAL SERIES

Municipal Hall, Colne, all performances 7.30pm

PROGRAMME

WEDNESDAY 11 OCTOBER 1989

Director/Soloist Richard Howarth (Violin)

VIVALDI The Four Seasons
Handel Concerto Grosso Opus 6 No.7
Mozart Divertimento in B flat

WEDNESDAY 22 NOVEMBER 1989

Conductor Nicholas Braithwaite
Soloist John Barrow (Flute)

Holst St Paul's Suite
Mozart Flute Concerto in G major
Respighi Ancient Airs and Dances Suite No. 3
Haydn Symphony No. 49

WEDNESDAY 13 DECEMBER 1989

Director/Soloist David Francis (Harpsichord)

Vivaldi Sinfonia in E
Bach Harpsichord Concerto in D minor
Telemann Don Quixote Suite
Avison Concerto Grosso No. 9
Handel Concerto Grosso Opus 6 No. 5

WEDNESDAY 24 JANUARY 1990

Conductor Nicholas Braithwaite
Soloist Martin Roscoe (Piano)

Mozart Divertimento in D
Mozart Piano Concerto in Eb major K.449
Mozart Eine Kleine Nachtmusik
Mozart Symphony No. 29 in A major K.201

WEDNESDAY 7 MARCH 1990

Director/Soloist Richard Howarth (Violin)

Handel Water Music Suite No. 1
Bach Violin Concerto in E
Mozart Divertimento in E
Haydn Symphony No. 45

Jazz

DIGBY FAIRWEATHER, AL WOOD, & THE STAN BARKER TRIO

Sunday 15 October 8.00pm

White Hart Hotel, Todmorden

Admission: £3.00

Concession: £2.00



An evening of straight down the middle mainstream jazz is on offer. Top trumpeter Digby Fairweather is joined by super sax man Al Wood for a session guaranteed to get you toe tapping in Todmorden. With White Hart regulars Stan Barker and the Trio what better way to begin a series of jazz concerts this winter.

Bar available.



FOLK

ALIAS RON KAVANA & Pat Ryan (Storyteller)

Wednesday 25 October 8.00pm

Irish Democratic League Club, Oxford Road, Burnley

Admission: £3.50

Concession: £2.00

A fantastic fusion of traditional and contemporary Irish music. ALIAS RON KAVANA was voted "Best Band of 88" by Highly Strung magazine. If asked to describe his style Ron inevitably replies 'Country and Irish' but elements of Spanish, Latin American, African and a rock solid rhythm and blues type section have given this group rave reviews wherever they perform. Stories from Pat Ryan and highly original music and song – this promises to be an evening to remember.

A joint promotion with Burnley Peace Committee



THE 1989 BURNLEY MULTI-CULTURAL ARTS FESTIVAL

ONE WORLD WEEK

23 – 29 OCTOBER

ALIAS RON KAVANA

Irish music with a contemporary touch! (see main brochure)

Wednesday 25 October 8.00pm

Irish Democratic League Club,
Oxford Road

Admission: £3.50

Concession: £2.00

TAFFY THOMAS and ROB THOMPSON

Story Telling:

Thursday 26 October 8.00pm

Talbot Hotel

Admission: £1.50

Concession: 75p

WORLD MUSIC DANCE NIGHT with

Sureela Shingaar Bhangra Band
The Barely Works and 'Roots'
Disco – DJ Pete Lawrence

Saturday 28 October 7.45pm

William Thompson Recreation
Centre

Admission: £3.50

Concession: £2.00

VESELKA

Ukrainian Music and Dance (see
main brochure)

Sunday 29 October 7.30pm

Burnley College, Ormerod Road

Admission: £2.00

Concession: £1.00

INFORMATION

HOW TO BOOK

TICKETS for performances, excursions and workshops can be booked in advance.

CALL IN at The Gallery Downstairs (Opening Hours are Mon-Fri 10-6, Sat 10-4, Sun 2-4) and pay by cash, cheque, Access or Visa.

POSTAL BOOKINGS to The Gallery Downstairs, Yorke St., Burnley, Lancs BB11 1HD.

Please make cheques payable to MPAA and enclose SAE.



0 2 8 2 2 1 9 8 6 / 2 9 5 1 3

AGENTS

ACCRINGTON	Althams Travel Services, 26 Blackburn Road Hyndburn Leisure, Gothic House, St. James Street
BACUP	Public Library, St. James Square First Steps (Business Consultants), Fiscal House, 27 St. James Street
BLACKBURN	Althams Travel Services, 12 Ainsworth Street
BURNLEY	Showstoppers, 29B Standish Street
BURY	Bury Metro Arts, Derby Hall, Market Street
CLITHEROE	Althams Travel Services, 20 King Street Tourist Information Centre, Church Walk
COLNE	Althams Travel Services, 13 Albert Road Pendle Technical & Leisure Services, Bank House, 61 Albert Road
HASLINGDEN	Public Library, Deardengate
NELSON	Althams Travel Services, 1 Scotland Road Tourist Information Centre, 20 Scotland Road
RAWTENSTALL	Ellen Smiths (Tours) Ltd., 4 Bury New Road Central Library, Queen Square Tourist Information Centre, 41-45 Kay Street Rossendale Music Centre, 32 Bank Street
TODMORDEN	Althams Travel Services, 15 Halifax Road Bears Wholefoods, 29 Rochdale Road

CONCESSIONS are offered to those in full time education, the unemployed, senior citizens, registered disabled people and also members of Bury Metro Arts. National Jazz Card holders receive discounts at Jazz Events.

PARTY RATES A discount of 10% is offered to groups of 10 or more, and party leaders get in FREE.



MEMBERS A Star means Members are entitled to £1 off this event. See our Membership Leaflet for details of the many other benefits offered to members; including Advance Information, Priority Booking, Gallery Previews, Free Equipment Loans and Discounts at local shops and theatres. To find out more, call us on (0282) 21986.

FACILITIES FOR THE DISABLED There are ramps and special toilet facilities for disabled people at The Gallery Downstairs. Please phone MPAA on (0282) 21986 to check facilities which vary at every venue.

ARTS INFORMATION FILES Everyone is most welcome to use our vast files of information at The Gallery Downstairs, which include details of events, exhibitions and courses.

V

V

I

S

SHOWCASE

O R I G I N S



September 2 – October 3

DEREK EMMS

Derek Emms origins are firmly rooted in East Lancashire although his international reputation has been established over the past forty years.

Beautifully decorated, elegant porcelain and stoneware by Derek are featured this month and we are delighted to be able to present a Lecture/Demonstration for schools and interested members of the public in conjunction with the exhibition.

LECTURE DEMONSTRATION

DEREK EMMS

Thursday 28 September 1.00 – 4.00pm

Theatre, Burnley Mechanics

Admission: Students 85p, Teachers free

Take this opportunity to improve technique and perhaps learn new skills with Derek Emms, a successful and experienced potter whose work is displayed in this month's Gallery Showcase.

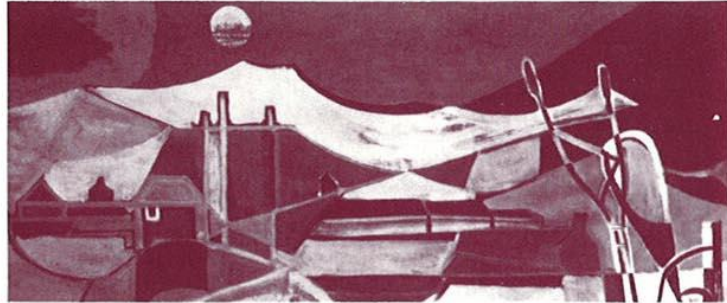
Brought up on the ideals of William Morris and Bauhaus design, Derek still holds some of those early beliefs: making well-designed functional objects, decoration to enhance and develop the form, the quality of materials and intimate knowledge of them gained through a continuing experience. Several of his methods will

be demonstrated and explained including: throwing exercises for hollow ware, flat ware and bowl; how to make and assemble a teapot, including the lid and spout; carved decoration and brush painting with oxides and pigment.



MAINSPACE

**THE EXPERIENCE OF
LANDSCAPE**



September 2 – October 3

Generations of artists have been inspired by the diversity of the British landscape. This is an exhibition which demonstrates the incredible range of interpretations, the moods of climate, the colours of the seasons and the relationships between art and reality.

Vast rain-swept moorlands, woods sparkling with light! Indulge in THE EXPERIENCE OF LANDSCAPE and enjoy the paintings, photographs and drawings of fifty-three post war artists selected from The Arts Council Collection, including: L.S. Lowry, Paul Nash, Joan Eardley, Victor Pasmore, Ivon Hitchens and Bill Brandt.

A touring exhibition from the South Bank Centre.



ILLUSTRATED TALK

Saturday 9 September 11.00am

The Gallery Downstairs

Admission: Free

MICHAEL RAINSFORD

A stimulating talk by Michael Rainsford on the ways in which people and artists have responded to the landscape. Individual works from this month's exhibition 'The Experience of Landscape' will be discussed, with lots of opportunity for questions and debate.



MAINSPACE



PAINTING THE TOWN

Paintings, Drawings & Prints of Burnley

By Willie Rodger

October 7 – November 6

Burnley is the theme of this month's exhibition, the result of several visits to the town by artist Willie Rodger, an Associate of the Royal Scottish Academy. His fascination with the rows of stone terraced houses, the character and detail of churches, factories and buildings, is clearly depicted in Willie Rodger's paintings, drawings and lino prints. His work concentrates on pre-war architecture and buildings which are in danger of disappearing, some of which we perhaps treat with complacency. This exhibition enables us to see Burnley through the eyes of the artist and enjoy his impressions of the town.



"...at first glance the houses appear to be very similar but once you start looking at them you see the lovely variation and detail, the painted windows with vases of flowers or a favourite ornament with the draped net curtains – and the great variety of pattern in the curtains..."



PARALLEL LINES

October 7 – November 6

VALDA MORRIS

These carpets are magical although you can't fly on them! Richly textured and individually hand-tufted, luxury rugs, carpets and wall hangings by Valda Morris flood our showcase with a wealth of designs: flowers, abstract patterns and symmetrical shapes, with an endless variety of colours, from muted autumn hues to the vibrant shades of summer.

PAUL MUCHAN

Classic lines decorated with geometric patterns, shapes and motifs feature in the large lidded and open raku vessels made by Paul Muchan. Pieces based on the idea of one simple form within another, cut and pierced to add emphasis and contrast, reflect Paul's interest and early training in sculpture.



Valda Morris



Paul Muchan

WORKSHOPS

GALLERY WORKSHOPS

MAKING CHRISTMAS DECORATIONS

Thursday 19 October 7.30 – 9.30pm for adults

Registration Fee: £2.50

Thursday 26 October 6.30 – 8.30pm for young people (10 – 16 years old)

Registration Fee: £1.00

with WAYNE BROWN

Here's a chance to make your own spectacular and original Christmas decorations, Christmas cards and gift boxes. Wayne is an expert in origami, whose deftness with paper can produce almost anything from a winter rose to an African elephant!

Last January's paper-folding demonstration was so popular we have decided to hold two workshops this season. All materials are included in the fee.

Up to 12 places available each session.

SCHOOLS WORKSHOP

MONOPRINTING WORKSHOP FOR JUNIOR SCHOOLS

Monday 16 October 10.00am – 3.00pm

with ANNE-MARIE CADMAN

The Gallery Downstairs, Burnley. 9 – 11 years. Max 21 students

Junior schools are invited to join this practical workshop based on the buildings and townscape of Burnley through the windows of The Gallery Downstairs. After an introduction to the exhibition 'Painting the Town' students will initially make sketches to be converted into stencils and produce large monoprints under the guidance of Anne-Marie Cadman.

A minimal charge of £1.00 per participant will be made to cover the cost of the materials supplied.



Photo: Burnley Express

OUTREACH EXHIBITION

BORDERLAND

An Exhibition of Photographs by JOHN DARWELL

Habergham Festival

Habergham 6th Form Centre, Burnley

Monday 9 October – Friday 24 November

John Darwell has produced some powerful images in this exhibition of colour photographs, which looks at the impact of mankind on the environment. BORDERLAND not only represents a geographical location – it is also a metaphor for the 'no man's land' where man's selfish interests and nature overlap.

All the photographs in this exhibition reflect the demands made on our landscape by material and economic development.

A Carlisle City Council Touring Exhibition.



JILL MOGER

In complete contrast, also featured in the Habergham Festival are Jill Moger's individually made ceramic sculptures in stoneware or porcelain, often humorous or satirical, always figurative, coloured with a variety of glazes, stains and lustres.

EXCURSIONS

LAMBETH PALACE

Wednesday, 1 November

Don't miss this unique opportunity to visit Lambeth Palace, the London home of the Archbishops of Canterbury since 1197.

Not generally open to the public we have been fortunate to arrange a tour of the Palace, which will include a view of the amazing transformation of the Chapel ceiling restored to its former glory last year by artist, Leonard Rosoman.

Early registration is invited and a meeting will be held in The Gallery Downstairs in October to finalise the travel arrangements to be organised by MPAA.



PRESS ...STOP PRESS ...STOP

HALLE ORCHESTRA OPUS ONE CONCERT

The Halle logo is written in a white, elegant, cursive script on a dark red rectangular background.

Sunday 19 November

Tickets: £7.00

Join us on a visit to hear one of Britain's favourite orchestras. Opus One is a series of winter concerts which include some of the best loved and familiar classics performed by the Hallé.

Programme:

Rossini	Overture, William Tell.
Borodin	In the Steppes of Central Asia.
Greig	Piano Concerto in A minor (soloist Pierre Reach).
Mussorgsky/Ravel	Pictures from an Exhibition.

Tickets cost just £7.00 and include transport to and from the pick up points below. Closing date for registration is Thursday 2 November.

6.00pm Opposite Health Centre, Leeds Road, Nelson
6.10pm Stand 5, Bus Station, Burnley
6.25pm Top Bus Stand, Infant Street, Accrington
6.35pm Opposite New Fire Station, Bury Road, Rawtenstall

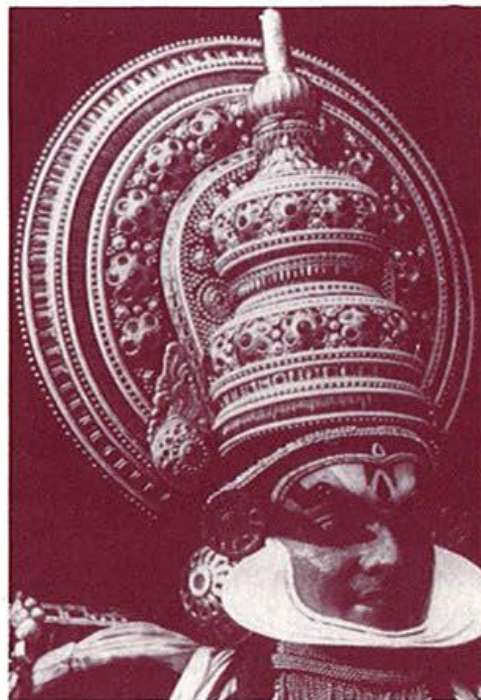
Centre Ocean Stream Kathakali Dance

Wednesday 1 November

7.30pm

**Hippodrome Theatre,
Colne**

Highly visual drama/dance from India. A unique company renowned for their spectacular and colourful performance.



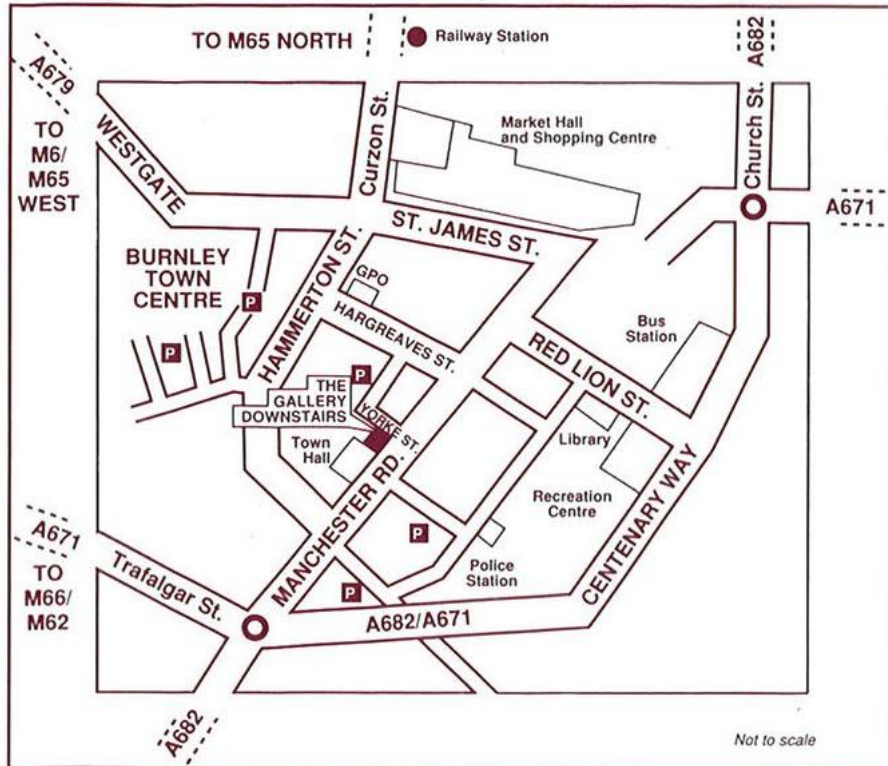
CHRISTMAS CRAFTS

11 November – 23 December

An 'Aladdin's Cave of crafts, paintings and jewellery. The Gallery Downstairs is just the place to find that special Christmas present.

MID-PENNINE ARTS ASSOCIATION

Yorke Street • Burnley • Tel • (0282) 21986



Mid-Pennine Arts Association is based at The Gallery Downstairs. The Gallery Downstairs is in the centre of Burnley, just off Manchester Road and easily accessible by both private and public transport. The bus station (see map) is within 2 minutes' walking distance, as are BR Stations – Burnley Central (6 minutes) and Manchester Road (2 minutes). At weekends and evenings parking is available in an adjacent car park. See map for other inexpensive car parks.

OPENING HOURS

Monday to Friday 10.00 a.m. to 6.00 p.m.
Saturday 10.00 a.m. to 4.00 p.m.
Sunday 2.00 p.m. to 4.00 p.m.

FACILITIES FOR THE DISABLED



We are always pleased to welcome disabled people to The Gallery Downstairs – just ask if you would like a Gallery Attendant to help you. We offer specially designed toilet facilities and ramped access.

ADMISSION IS FREE



Mid-Pennine Arts Association gratefully acknowledges the financial assistance of the Borough Councils of Burnley, Hyndburn, Pendle and Rossendale, the Town Council of Todmorden, North West Arts, Yorkshire Arts and Lancashire County Council.

The information in this brochure is correct at the time of going to press but MPAA reserves the right to cancel or amend the programme due to unforeseen circumstances.