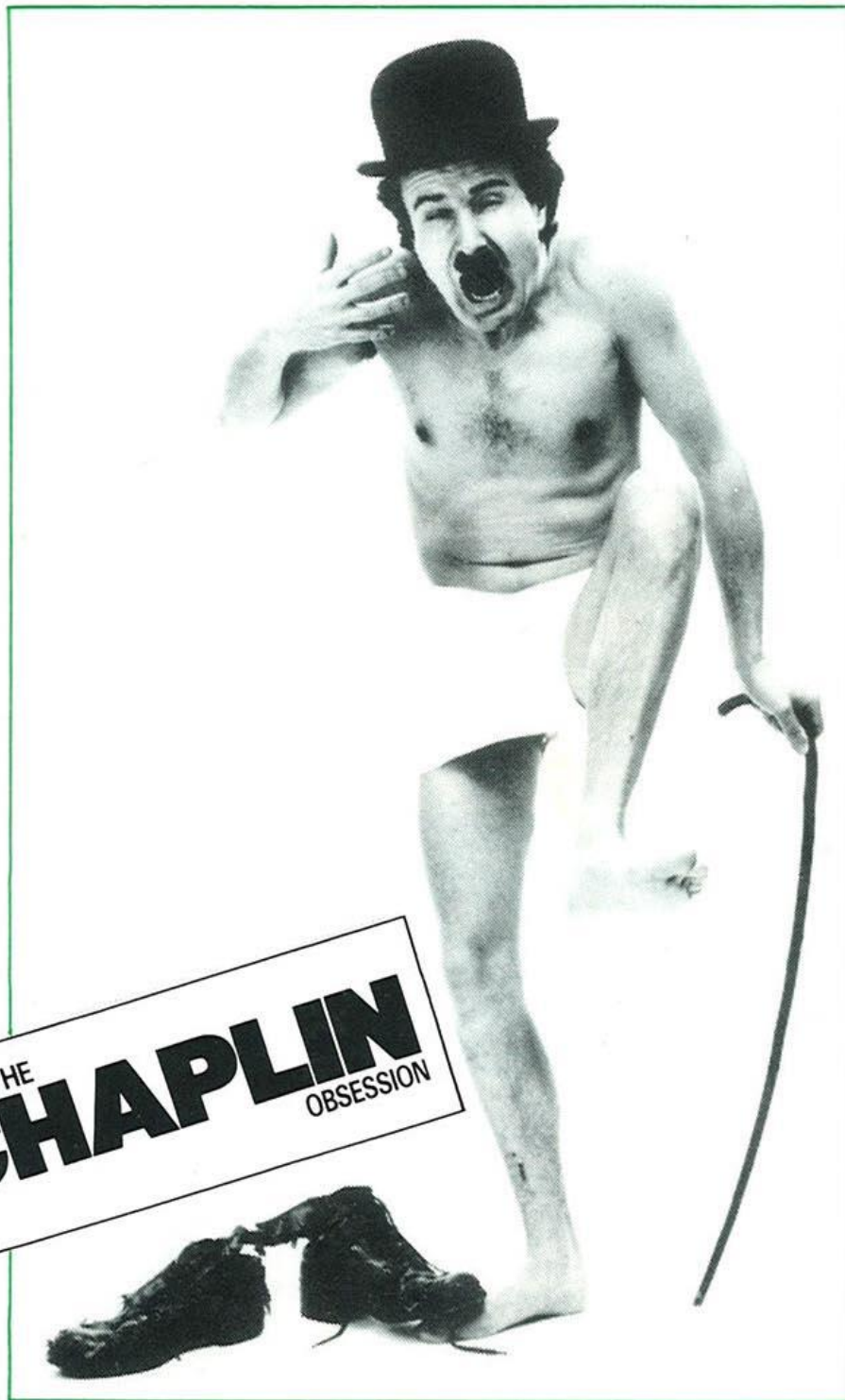


 MID-PENNINE
ARTS ASSOCIATION



THE
CHAPLIN
OBSESSION

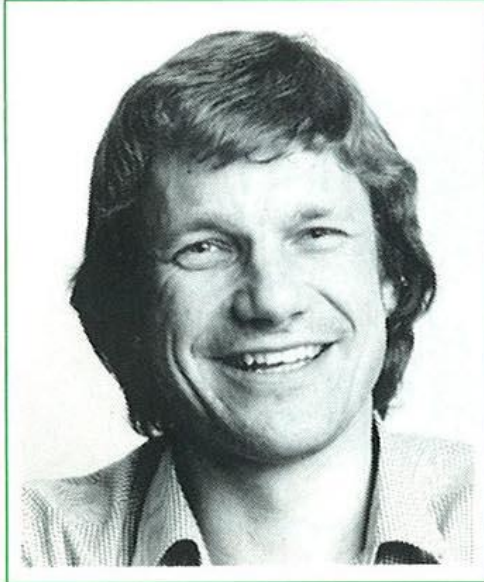
Spring 1989



Wed 25 January 7.30 p.m.

NIGEL PERRIN

"The Secret Diary of a Counter Tenor"



Central Library, Accrington
Admission £3.00,
Concessions £2.00
Series Discount £7.50,
Concessions £5.00.

Nigel Perrin is probably best known as the top line singer in the *King's Singers*, with whom he toured all over the world for 11 years and recorded 25 albums. His talk will trace the development of the counter tenor voice from the days of Elizabethan troubadours, through the *Italian castrati* to modern opera and cabaret. The talk will take a light hearted look at some of the quirky misconceptions many people have of the counter tenor singer. Nigel will be accompanied by Judith Bamber on the piano.

This is the first in a series of three Lecture/Recitals which also features Peter Dickinson on Wednesday 8 February and Martin Roscoe on Wednesday 8 March.

Presented in association with Fylde Arts Association



Thurs 2 February 8.00 p.m.

RED STOCKINGS

"Ladies in the Lift"



Silverman Hall, Nelson
Admission £3.00,
Concessions £2.00
Series Discount £7.50,
Concessions £5.00.

What happens when three women get stuck in a lift together? Where's the interest? Where's the romance? Where are the men?! Light hearted and magical, this is more a fairy tale than a disaster movie; the lift has a mind of its own and anything is possible..... Red Stockings already have many fans in the Mid-Pennine area - come and join them and have a really good laugh at this, first of our cabaret series at the Silverman Hall.



Look out for the Grand Theatre of Lemmings on Thursday 23 February and Lip Service on Thursday 27 April which make up the series.

Bar Available.

Supported by North West Arts



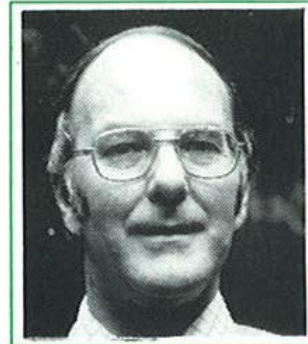
Wed 8 February 7.30 p.m.

PETER DICKINSON

"Rags, Blues and Parodies: The Life of a Composer"

*Habergham V1th Form Centre, Burnley
Admission £3.00, Concessions £2.00*

Peter Dickinson was born in Lytham St Anne's, the son of Frank Dickinson, the contact lens pioneer, and Muriel Dickinson, widely known for her dramatic recitals. Peter is an Emeritus Professor of Music at Keele University and is an authority on American Music. He will talk about and play the music of Gershwin, Joplin and Copland as well as his own entertaining Rags, Blues and Parodies.



This is the second of a series of three Lecture/Recitals which also features Martin Roscoe on Wednesday 8 March.

Presented in association with Fylde Arts Association.

Thurs 9 February 7.00 p.m.



**NORTHUMBERLAND
THEATRE COMPANY**

"Puss in Boots"



St Veronica's Church Hall, Helmshore Admission £2.00, Concessions £1.00.

The rags to riches story of a simple man who is left a cat, and discovers that his unexpected inheritance is a lot more intelligent than the average feline. Together they set off in search of their destiny, and their journey takes them through many strange lands and adventures before their way is eventually barred by a huge and terrible ogre. How can the monster be defeated? An excellent night out for the whole family.

Presented in association with St Veronica's Church and supported by North West Arts.

Fri 10 - Thurs 16 February



**THE FABULOUS SALAMI BROTHERS
with BINGO and ART KNIGHTLEY
"Vaudeville, Variety and Cabaret"**



*Friday 10 February 7.30 p.m. Kelbrook Parish Hall
Admission £2.50, Concessions £1.50*

*Saturday 11 February 7.30 p.m. St Christopher's High School, Accrington
Admission £2.50, Concessions £1.50*

*Sunday 12th February 7.30 p.m. St Michael's Social Club, Cornholme, Todmorden.
Admission £2.50, Concessions £1.50*

*Wednesday 15 February 7.30 p.m. St John's Parish Hall, Worsthorne
Admission £3.00, Concessions £2.00 (Includes Supper)*

*Thursday 16 February 7.15 p.m. St Paul's Constable Lee School, Rawtenstall
Admission £2.50, Concessions £1.50*

The Mid-Pennine "Community Treat" this spring features well known clowns, fools and eccentrics THE FABULOUS SALAMI BROTHERS, who will amuse and amaze with feats of skill, strength and stupidity. Musical diversion comes from Bingo and Art Knightley who combine the vitality of the alternative cabaret with the spirit of the end of the pier show. Fun and madness for all the family.

The performance at Cornholme is presented in association with Red Water Arts and the others are presented in association with our hosts.



Fri 17 February 7.30 p.m.

ENGLISH CAMERATA Colne Chamber Orchestra Series



Municipal Hall, Colne

Admission £3.50, Concessions £2.50

The English Camerata begin the second half of their concert series with a programme guaranteed to please, which features international soloist, Alan Hacker, playing the Mozart Clarinet Concerto. The English Camerata has grown over the last ten years from a piano based chamber ensemble, with Elizabeth Altman, and principal instrumentalists from Opera North. They have now developed into a full chamber orchestra, offering a wide repertoire of Baroque, Classical and Romantic Music.

Haydn

Symphony No.6 "Le Matin"

Mozart

Concerto for Clarinet and Orchestra in A major

Grieg

Lyric Pieces op 68

Mozart

Symphony in B flat major K.319

Bar and Coffee Bar available.

A Joint Promotion with Pendle Borough Council

Mon 20 - Fri 24 February 7.30 p.m.



FAIR STAGE THEATRE COMPANY "Bosh and Nonsense"

Primary Schools in Todmorden.

A witty and gentle puppet show based on the eccentric *Nonsense Poems* of Edward Lear. This year's Todmorden schools tour will introduce such characters as the Owl, the Cad and the Mucky Yuppy Yapper; a bored duck and a rheumatic kangaroo; and a poignant pair of pelicans.

A Joint Promotion with Todmorden Town Council.

Thurs 23 February 8.00 p.m.



GRAND THEATRE OF LEMMINGS "Daredevils"



Silverman Hall, Nelson

Admission £3.00, Concessions £2.00

A unique "new variety" spectacular, full of stunts, magic and illusion. To describe it, as the press did, as an "hilarious pinnacle of inspired silliness" is to put it mildly. "Daredevils" is slick, fast, funny and spectacular in scale, with disaster and triumph hanging precariously in the balance as the intrepid heroes attempt the most extra ordinary barrage of daredevil acts ever conceived in circus or cabaret.

Don't miss the third in our series of cabaret nights at the Silverman Hall on 27 April featuring Lip Service.

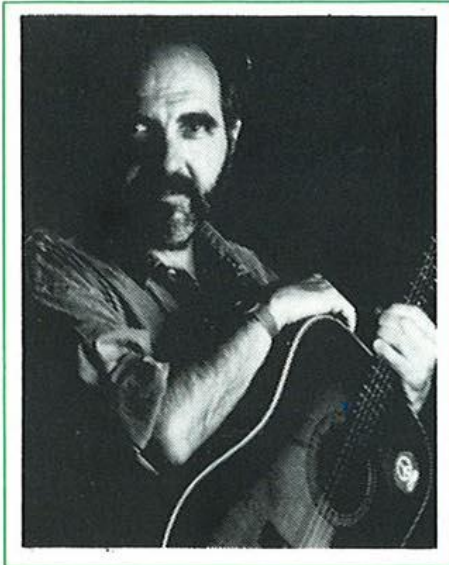
Bar available



Thurs 2 March 8.30 p.m.

ROY BAILEY

Folk Performance



Thursday 2 March 8.30 p.m.

Talbot Hotel, Burnley

Admission £3.00, Concessions £2.00,
Burnley Folk Club Members £1.00.

Described in the Guardian as "possessing one of the folk world's finest voices ..." Roy Bailey is a fine interpreter of both traditional and contemporary songs. He is recognised as a major artist who has successfully combined artistic and political commitment, receiving international and critical acclaim.

His songs have a biting content, looking at human and social issues, including themes of love,

injustice, persecution and despoilation of our planet.

This will be Roy's first visit to Burnley, and we are expecting a sell-out, so book early!

Wed 8 March 7.30 p.m.



**REMOULD
THEATRE COMPANY**

"Steeltown"



Town Hall, Padiham

Admission £3.00,
Concessions £2.00

Previous performances by this company have been extremely popular in the North West. In the form of an oral history drama, "Steeltown" looks at the daily lives and times of the workers and families in the steel industry from the days

of horse-drawn wagons through to the recently announced plans for privatisation. The play, written and directed by Rupert Creed, is based on tape-recorded interviews with working and retired steel workers and their families, mainly from the Scunthorpe area.

Supported by North West Arts





Wed 8 March 7.30 p.m.

MARTIN ROSCOE

"The Development of Solo Piano Music 1800 to 1865"



Central Library, Accrington
Admission £3.00, Concessions £2.00

The years 1800 to 1865 saw great changes in both the piano as an instrument and in the way it was played. With the phasing out of the *forte piano*, the increase in the tonal range and the introduction of the sustaining pedal the instrument Beethoven knew metamorphosed into the Concert Grand of Chopin and Liszt.

The technique of playing the instrument also developed through the work of, in particular, Beethoven, Schubert, Schumann, Mendelssohn, Chopin and Liszt, and Martin Roscoe will be playing examples from each of these.

Presented in association with Fylde Arts Association

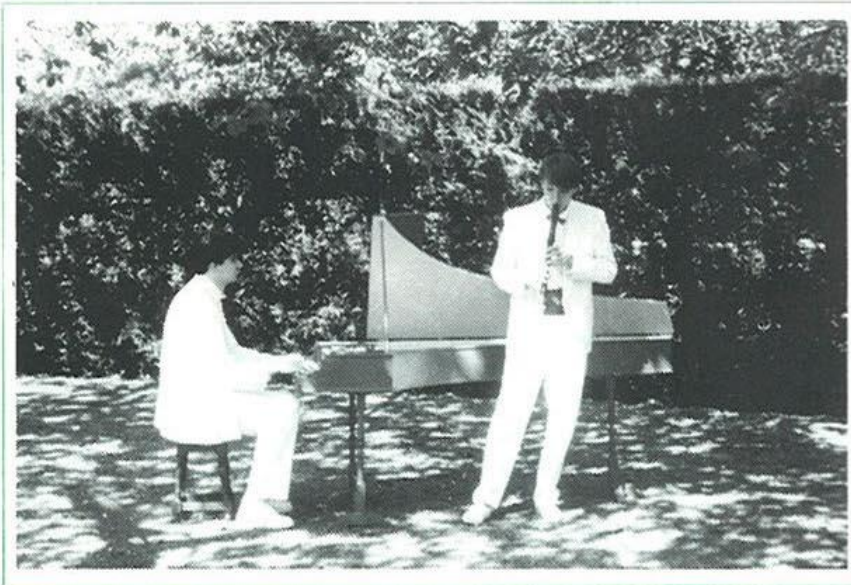


Thurs 9 March 7.30 p.m.

PIERS ADAMS - Recorder

NIGEL TILLEY - Harpsichord

"The Birds and the Bees"



Pendle Heritage Centre, Barrowford
Admission £3.00, Concessions £2.00



With titles like "Le Coucou", "Le Rossignol", "The Bee", "The Swan", and "Music for a Bird" this promises to be an evening of airborne delights! Piers Adams - "some of the most brilliant recorder playing you are likely to hear in this country" - is a very talented young musician, receiving wide acclaim as both sparkling performer and inspired teacher. The Heritage Centre's Bannister Room will be an especially appropriate setting for the concert, as like much of the music, it dates from the middle of the 17th century.



Sun 12 March 8.00 p.m.

DICK MORRISSEY

and the Paul Mitchell Davidson Trio

White Hart Hotel, Todmorden
Admission £3.00, Concessions £2.00



Jazz at the White Hart gets underway this season with a welcome return visit by leading saxophonist Dick Morrissey. Dick has worked extensively with Cannonball Alderley and Herbie Mann, with blues singer Jimmy Witherspoon, The Animals, Georgie Fame and Peter Gabriel. He is perhaps best known for his partnership with Jim Mullen in the Morrissey-Mullen Band. For this gig he is backed by the superb Paul Mitchell Davidson Trio. Last time Dick played at the White Hart we had a full house with standing room only....so book early !

Bar available



Mon 13 March 7.30 p.m.

LIZ NORTH

Practical Writing Workshop



Talbot Hotel, Burnley
Admission £3.00, Concessions £2.00.

Following a very successful practical workshop last season, novelist Liz North will be showing keen writers how to go about putting pen to paper and improve their prose style. All standards welcome - the only requirements are enthusiasm, a pen and some paper !

Presented in association with Pennine Ink Writers Workshop



Tues 14 March 8.00 p.m.

NICKELODEON

"Did You See That"



Nelson and Colne College, Barrowford
Admission £3.00,
Concessions £2.00

Subtle clowning, beautifully controlled slapstick and frantic cartoon movement tell the story of William and Wilma - two frightened and lonely people who occupy adjacent theatre seats. The show they are watching, and eventually disrupt, is a dance spectacular. Their hilarious efforts to fall in love are littered with embarrassing moments that escalate from a swallowed contact lens to their accidental takeover of the entire theatre.

Presented in association with Nelson and Colne College and supported by North West Arts.



Fri 17 March 7.30 p.m.

ENGLISH CAMERATA
Colne Chamber Orchestra Series



Municipal Hall, Colne

Admission £3.50, Concessions £2.50

The fifth concert in the 1988/89 series is for string orchestra and the English Camerata will once again be playing first class pieces in the popular repertoire. Extremely high quality string playing is the hallmark of the English Camerata, many of whose players come from Opera North's orchestra. Don't miss the final concert of the series on Friday 14 April.

Pergolesi	Symphony in G minor
Vivaldi	Concerto for Four Violins and String Orchestra
Dag Wiren	Serenade
Tchaikovsky	Souvenir de Florence

Bar and Coffee Bar available.

A Joint Promotion with Pendle Borough Council



Tues 21 March 7.30 p.m.

DERBY PLAYHOUSE
"Wicked Old Nellie"



Town Hall, Accrington

Admission £3.00, Concessions £2.00

A sympathetic look at the old, the bizarre and socially unacceptable people who colour our lives. "Wicked Old Nellie" is a moving insight into the world of an old woman who appears to be mad, but once the images in her mind are understood, she is totally reasonable and sane. Lucy Gannon, an award winning playwright, has drawn on her own experience as a residential social worker with mentally handicapped adults to write this warm, honest and wryly humorous play.



Fri 24 March 7.30 p.m.

**CLEVELAND THEATRE
COMPANY**
"Educating Rita"



Public Hall Haslingden

Admission £3.00, Concessions £2.00

Featuring *Emmerdale Farm's* Drew Dawson, this much loved Willy Russell play will be one of the highlights of the Rossendale Festival. Hairdresser Rita throws in her job to become an Open University student and changes both her own life and that of her jaded lecturer Frank. He needs a haircut as much as she needs knowledge, and they both work their way towards self-knowledge in a haphazard but thoroughly heart-warming fashion.

Presented in association with the Rossendale Festival.

C · L · E · V · E · L · A · N · D

theatre

C · O · M · P · A · N · Y

Fri 24 - Mon 27 March

ROSSENDALE FESTIVAL

MPAA has joined forces with Rossendale Borough Council and Little World to bring you the first ROSSENDALE FESTIVAL. The Easter weekend will be a hive of activity celebrating all the arts with a host of performances, events and activities, throughout the Borough, for everyone to enjoy. In addition to the Cleveland Theatre Company production of "Educating Rita" and the Bhangra Concert, MPAA will be promoting a series of street and pub events. Full details of all the Festival events will be published in the Rossendale Free Press.

Sun 26 March 7.30 p.m.



DOSTANA MUSICAL PARTY Bhangra Concerts

Public Hall, Haslingden

3.00 p.m. Ladies Only

7.30 p.m. Open Concert

Admission to each concert £2.00, Concessions £1.00



Locally based Asian band *Dostana* will once again lead two energetic and happy sessions of Bhangra. The afternoon concert will be for ladies only, in Muslim tradition, and the evening show will be open to everyone.

A Joint Promotion with the Rossendale Festival

Thurs 13 April 7.30 p.m.



MARK SAUNDERS "The Chaplin Obsession"

Park High School, Colne

Admission £3.00,

Concessions £2.00

Charles - no relation to Chaplin - is a bit of a Charlie. He's a film buff on the international movie and college circuit, currently wowing audiences with his celebrated "Chaplin the Man" lecture. But he realises that he only knows half the Chaplin story. Further investigations result in dreams and obsessions with his subject until the fateful day when he wakes and finds himself possessed by Chaplin... This a return visit by Mark Saunders, Scotland's leading mime performer and will feature some of Chaplin's own gags and routines, in this centenary year of his birth. Mark will also be leading three mime workshops in local secondary schools. Presented in association with Park High School and supported by North West Arts.





Fri 14 April 7.30 p.m.

ENGLISH CAMERATA Colne Chamber Orchestra Series

Municipal Hall, Colne

Admission £3.50, Concessions £2.50

This concert brings to a close the English Camerata's present season at Colne. The programme for this concert includes Mozart's beautiful Piano Concerto K414, which features Elizabeth Altman, the orchestra's director, as solo pianist, guaranteeing a most fitting climax to a magnificent orchestral concert series.

Haydn

Symphony No. 22 "The Philosopher"

Mozart

Concerto for Piano and Orchestra K.414

Schubert

Symphony No. 5 in B flat major D.485

Bar and Coffee Bar available.

A Joint Promotion with Pendle Borough Council



Tues 18 April 2.20 p.m.

FREEHAND PUPPET THEATRE "Finding Time"

Cornholme County Primary School, Todmorden.

No one has time to take Ben to the carnival and Ben is fed up with waiting. He wishes his time away. Tick and Tock, the timekeepers, take him more literally than he intended and before Ben can say 'Jack Robinson' he's lost four hours of his life.

The children follow Ben on his journey in search of lost time: they meet Old Father Time, Big Ben and an old woman with whom Ben discovers the value of sharing time.

A Joint Promotion with Cornholme County Primary School and presented in association with Yorkshire Bank plc.



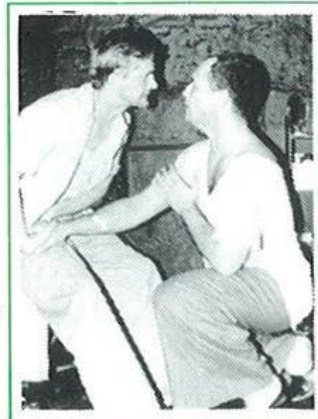
Thurs 20 April 8:00 p.m.

LEIGH KINGSTON PRODUCTION COMPANY "Kiss of the Spiderwoman"

Accrington and Rossendale College, Rawtenstall

Admission £3.00, Concessions £2.00

Based on Manuel Puig's acclaimed novel of the same title (already made into a highly acclaimed film) following a successful London stage run this uncompromising play describes the developing relationship between two prisoners whose only common ground is the cell they have to share. One is a Marxist freedom fighter and the other a homosexual window dresser, who has been offered freedom in exchange for information on his cell mate's rebel contacts. As their relationship develops Molina finds this betrayal increasingly hard to bear.... This production, the first national tour of the play, features National Theatre Player Paul Tomay and Michael Jenner of the Royal Shakespeare Company.



Presented in association with Accrington and Rossendale College and supported by North West Arts.



Sun 23 April 8.00 p.m.
KATHY STOBART
 and The Stan Barker Trio

The White Hart Hotel, Todmorden
Admission £3.00, Concessions £2.00

Jazz at the White Hart again features one of the all time greats of British saxophone. Kathy Stobart is renowned for her accomplished playing and has delighted jazz audiences throughout the country for more years than she would care to admit to. She has worked with all the leading musicians and bands and has a host of recording credits to her name. For this concert she is joined by the Stan Barker Trio who are regular favorites with Mid-Pennine audiences.

Bar available



Mon 24 April 7.30 p.m.
OLWYN HOCKING

"A Day in the Life of the News Team"



Central Library, Rawtenstall
Admission £2.00, Concessions £1.00

Olwyn Hocking has been with the BBC since 1981 and has worked as a regional journalist, a producer for "North West Tonight" and is currently News Editor in Manchester. She will be talking about the work of the television news team, describing the routines of a typical day: how the news is collected, written up, assembled into order, and how everything can change when "the big story" comes in.

Presented in Associations with the Rossendale Writers Group.



Tues 25 April 8.00 p.m.
ARBELA PRODUCTIONS
 "If This Be Love"

Accrington and Rossendale College,
Rawtenstall
Admission £3.00, Concessions £2.00

Sylvia Syms set up the company 'Arbela' to enliven the standards of poetry reading which all too often has been dry and dull in the past. With Janine Ulfane she will be reading women's poetry in a style that will be both educational and amusing, whilst at the same time being accessible to a wide ranging audience.

Presented in association with Accrington and Rossendale College and supported by North West Arts





Tues 25 and Thurs 27 April

FAIRSTAGE

"The Not So Grim Grimm Show"

Tues 25 April 10 a.m.
Thompson Street Nursery, Burnley

Tues 25 April 1.30 p.m.
Accrington Road Nursery, Burnley

Thursday 27 April 10 a.m.
Hillside Nursery, Haslingden

Thursday 27 April 2 p.m.
Cowtoot Lane Nursery, Bacup

The stories of the Brothers Grimm have a reputation for reflecting the dark side of human nature - rather frightening fairy stories with gruesome detail. But not all the stories collected by the Brothers Grimm were grim. Many were light, beautiful and funny. With the aid of puppets, non-frightening masks and acting, this production will unveil to nursery children and their teachers just how enjoyable these other stories can be.



Thurs 27 April 8.00 p.m.

LIP SERVICE

"Withering Looks"

Silverman Hall, Nelson
Admission £3.00, Concessions £2.00

An hilarious spoof on the Bronte Sisters, this musical comedy is a torrid tale of suppressed passions, set in the Yorkshire Moors. As in previous epic productions by Lip Service, Maggie and Sue play all the characters in the story and have some extremely exciting costume changes: from cassocks to crinolines. "with judicious use of running gags and some deliciously ham acting it's very, very funny" The Guardian.

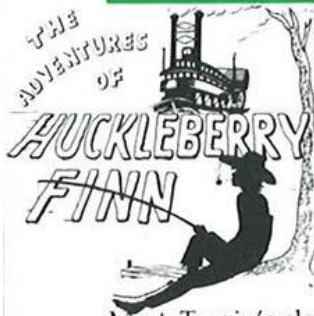
Bar available



Thurs 18 May 7.30 p.m.

ZIP THEATRE

"The Adventures of Huckleberry Finn"



Civic Theatre, Oswaldtwistle
Admission £3.00, Concession £2.00,
Parties of 10 or more, £1.00 each.

Huckleberry Finn is probably the best loved American novel of all time. Generations of youngsters have followed Huck and Jim's escape on a raft down the Mississippi River, and shared their adventures in the wilds of the Deep South. Zip Theatre's musical adaptation of Huckleberry Finn is faithful to the spirit and content of Mark Twain's classic novel and is suitable for school children (10 years and over) and family audiences alike. Supported by North West Arts



January to April 1989.

"CHORALE"

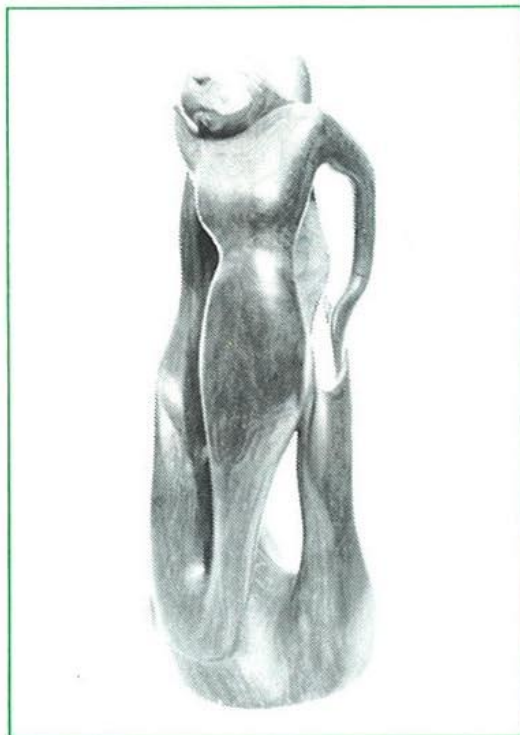
A Commission for Choir & Ensemble

John Reeman is Composer in Residence at Nelson and Colne College for twelve months, and together with North West Arts and Lancashire Education Arts Project, we have commissioned him to write a new work for the College's students. The piece, provisionally entitled "Chorale", will be performed both in Lancashire and during the students' visit to France later in the year.

MAINSPACE

Thursday 12 January - Tuesday 7 February

A TOUCH OF DISCOVERY



'Siren'
Lignum vitae
Duncan Johnstone

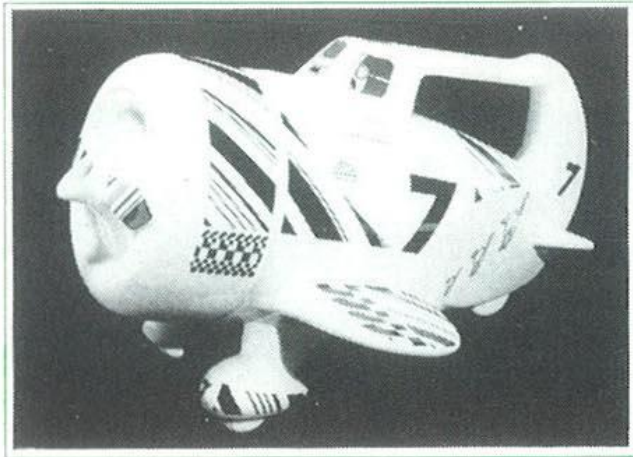
A Multi-Sensory Sculpture by Duncan Johnstone

Visitors to the gallery this month are invited to use their sense of touch to discover the multi-sensory sculptures exhibited by Duncan Johnstone. He has created a series of sculptures that are not only beautiful to see but are equally exciting to touch. Over the years Duncan has used a variety of different woods but the most dominant is *lignum vitae*, the Wood of Life, also known as the Holy Tree. The physical qualities of the wood, the vitality of grain movement and colour all play an important part in the development of the finished expression. Many of his pieces are figurative and his sources of inspiration are founded in the mystery of life and all its complexities, in religion and in classical mythology. Sirens, Icarus, and Persephone are all portrayed alongside the symbolic figures of Womanhood and Mankind. There will be a taped commentary available in the gallery to assist the visually handicapped round the exhibition. Duncan Johnstone will be in the gallery to talk about his work during the first three and last three days of the exhibition.

Saturday 11 February - Tuesday 14 March

THE CIRCUS COMES TO TOWN

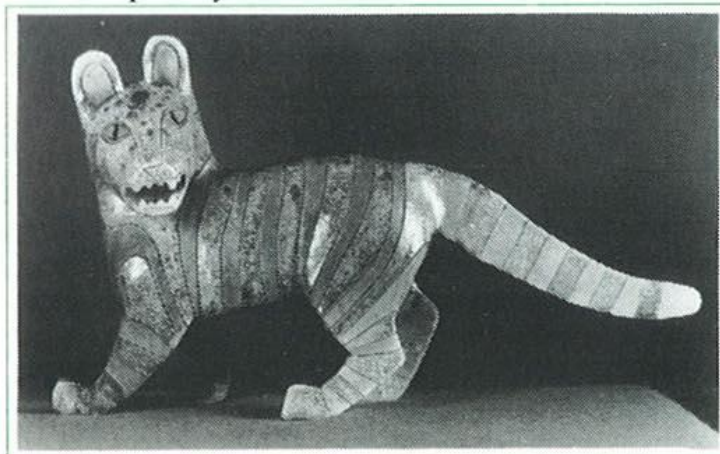
Much of the work in this exhibition is full of humour, inspired by the fascinating qualities, colours and shapes of the circus. Clowns, jugglers and acrobats come tumbling into the



*'Bee Gee'
Circus Racer
white earthenware
teapot
L. Stuart Taylor*

imagination; elephants, tigers, leopards and lions parade before us. Drawings, paintings and prints, teapots, toys and jewellery all capture the atmosphere and excitement of the Big Top, as the skills and techniques of the artist and craftsman are translated in this exhibition into delightful interpretations on the theme of Circus. The circus always provides a magical spectacle of colour, entertainment and drama and *The Circus Comes To Town* covers every aspect of circus life as seen through the eyes of contemporary artists and craftspeople today.

A touring exhibition from the Northern Centre for Contemporary Art



*'Tiger'
ceramic
Anna Noel*

Saturday 18 March - Tuesday 18 April

FIGURE II

A Private Mythology



'Come to Rest'
Gravure
Eileen Cooper

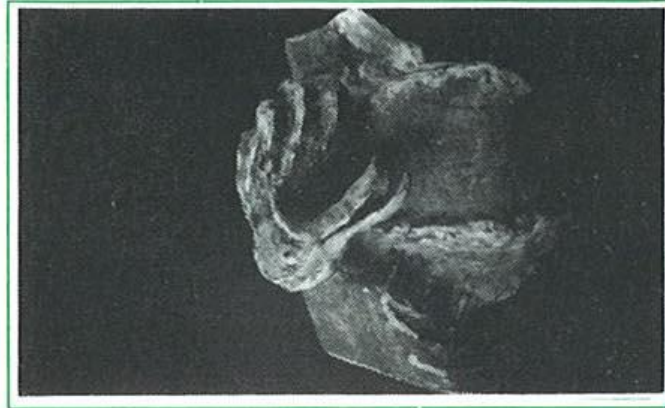
What are today's artists making of the human figure? What sort of society and lifestyles are they reflecting? Art works never give an entirely neutral presentation of a subject; some interpretation, some invested meaning, is always there whatever the subject matter. This is particularly true when the subject matter is ourselves. Whenever the body has been a subject of art, it has been given memorable shape by the wish to communicate certain ideas or states of feeling. There has also, in recent history, been the thread of the academic study of the figure, although this too, despite apparent objectivity, has always carried with it the particular ideology of the time.

This exhibition, which has been selected by Mary Rose Beaumont, includes work by fourteen painters and sculptors and looks at the figure in twentieth Century art, concentrating on one aspect: the naked figure, with the emphasis on showing work by the younger generation of artists.

A touring exhibition from Aberystwyth Arts Centre

Saturday 22 April - Tuesday 30 May

CREATURES



'Dead Tired'
Imogen Margrie

Worshipped as gods, subjects of fable and legend, symbols of superstition. From the ancient dinosaur lumbering across wild plains to the domestic tabby curled contentedly by the



'Crab'
Taja

hearth, creatures wild and ferocious, courageous and dignified, have long held an irresistible fascination for us all. This exhibition takes a look at the ways in which today's craftsmen are depicting

creatures in contemporary ceramics. Creature forms perching on the rim of pots, or crawling slowly across the surface add decoration to functional pots. Large bowls are patterned with designs of tropical birds and wild animals. Figurative sculptured birds, beasts and creatures of fantasy and fiction are evident, and animals with human qualities are treated with gentle humour and wit.

The fish of the sea, the birds of the air all have a place, a character to see and a story to tell!

GALLERY SHOWCASE

Thursday 12 January - Tuesday 7 February

"Touch of Discovery"

This month the showcase display is part of the main exhibition and features bronze sculptures by DUNCAN JOHNSTON. Whilst still teaching, in order to develop through practising in various materials and methods, Duncan acquired a furnace and began casting in bronze. He felt this medium had few limitations and broadened his scope for expression. These bronzes, which have an immediate impact on the senses, communicate his mastery of the techniques, and visitors to the gallery are welcome to handle with care each piece on display. For further information about Duncan Johnston's work see under Mainspace.



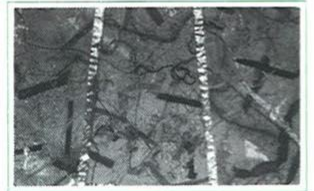
bronze portrait study
'Mary'
Duncan Johnston

Saturday 11 February - Tuesday 14 March

"The Fibre's Web"

Non-Woven Textiles by Sandra Yorke

What is a non-woven fabric? Quite literally it is a fabric which is not woven, knitted, knotted, laced or constructed by any other conventional means. Over the past three years Sandra has developed her modern hi-tech approach to the construction of unconventional non-woven fabrics. Her exciting range of ethnic-



'Kimono' (detail)
Sandra Yorke



'Still Life' (detail)
Sandra Yorke

inspired designs is shown here alongside some of her contrasting earlier hand woven work. Her semi-transparent pieces are used to make fashionable garments, kimonos and jewellery. Sandra will be demonstrating her techniques in The Gallery Downstairs on Saturday 25 February and will also lead a workshop at Accrington and Rossendale College in April. (See under Workshops for further details).

Jewellery Showcase

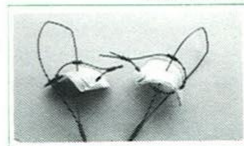
Thursday 12 January - Tuesday 7 February

VAL TOMLIN

Spalted beech and ebony, carved into wing shapes and triangles, with organic designs in silver and semi-precious stones are features of Val Tomlin's large attractive earrings and brooches.

SUE RATCLIFFE

Sculptures that hang from ears! Sue Ratcliffe's sculptural jewellery from paper and wire derives its inspiration from her wanderings around DIY shops and have led to earrings in this display that actually whistle in the wind!



'Singing Rainbows'
Sue Ratcliffe

Saturday 11 February - Tuesday 14 March

KATHLEEN THOMPSON

Silver or combinations of silver and gold with freshwater pearls and semi-precious drops, used for the subtle differences in colour and texture are incorporated into Kathleen Thompson's delicate range of earrings and necklaces.



Kathleen Thompson

KAY HERBERT

Ideas from nature make a strong influence on Kay's delightful titanium jewellery, treated with a variety of techniques to enhance its decorative quality, combined with satin-finished white metal and copper for maximum contrast and effect.

Saturday 18 March - Tuesday 18 April

"Spring Fever"

Spring arrives in the gallery with a display of ceramics and painted silk, sparkling with vibrant, refreshing colour and the excitement of the new season.

ANGELA ATKINSON makes classically formed vases, lamp bases, jugs and bowls. Working in white high-fired earthenware biscuit she hand paints, stencils and sponges her gay and distinctive designs in a range of colours from pastel to brilliant hues under a matt glaze, always ensuring that the design of the form complements the decoration on the pot. Her main influences include Vanessa Bell, Raoul Dufy, Clarence Cliff and Susie Cooper.



Angela Atkinson

MELANIE HENEKE-ELIOT produces spontaneous designs in large, bold, abstract patterns in her very distinctive and fashionable scarves and garments. Using fine silk as the background for her strong, colourful work, she hand paints using dyes in warm, luscious colours.

Saturday 18 March - Tuesday 18 April

KAREN McGLASHAN

Articulated earrings, ranging from studs to larger, more adventurous pieces using different carats of gold solders to obtain varying effects, are features of Karen's elegant work.



Rowena Park

ROWENA PARK

Using bright colours, spirals and squiggles are engraved, then individually over-painted on clear acrylic in Rowena's striking jewellery. Fish and fairground imagery influence pattern and line in her earrings, brooches and bangles.

Saturday 22 April - Tuesday 30 May

“Mainly Men !”

An exciting array of craftwork made mainly by men - almost, but not quite - exclusively for men appears in this display of bags, ties, boxes and jewellery.

ALAN McKENZIE's Gladstone bags and cases are individually made from finest shoe leather in traditional ways; TIM COHEN concentrates on silver jewellery for men with a range of tie pins, cuff links and single earrings in striking original designs.

DAVID HILTON'S stoneware, with its elegant and subtle decoration in muted colours takes the form of shaving bowls, brushes and razors. PAUL NICHOLLS exhibits some of his hand made wooden boxes and PAUL EMMERSON shows bright, colourful ties and bow ties in fashionable designs.

ROSEMARY ATKINSON, the female exception in this month's showcase, weaves sophisticated silk scarves and ties, which exploit the soft, lustrous qualities of heavy spun silk in rich iridescent colours and bold geometric designs.

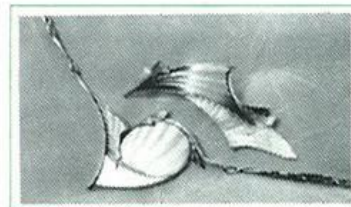
Saturday 22 April - Tuesday 30 May

NINA EMBLING

Shaded areas in linear patterns, and shapes relating to natural forms and based on circles or parts of circles are characteristics of Nina's oxidised silver and gold jewellery.

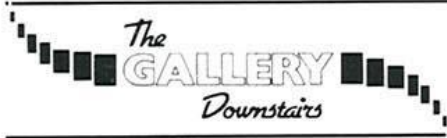
BRIAN EBURAH

Brian's gold, silver and titanium brooches, earrings and necklaces following flowing natural lines with highly polished, chased surfaces, are "one off" pieces individually designed.



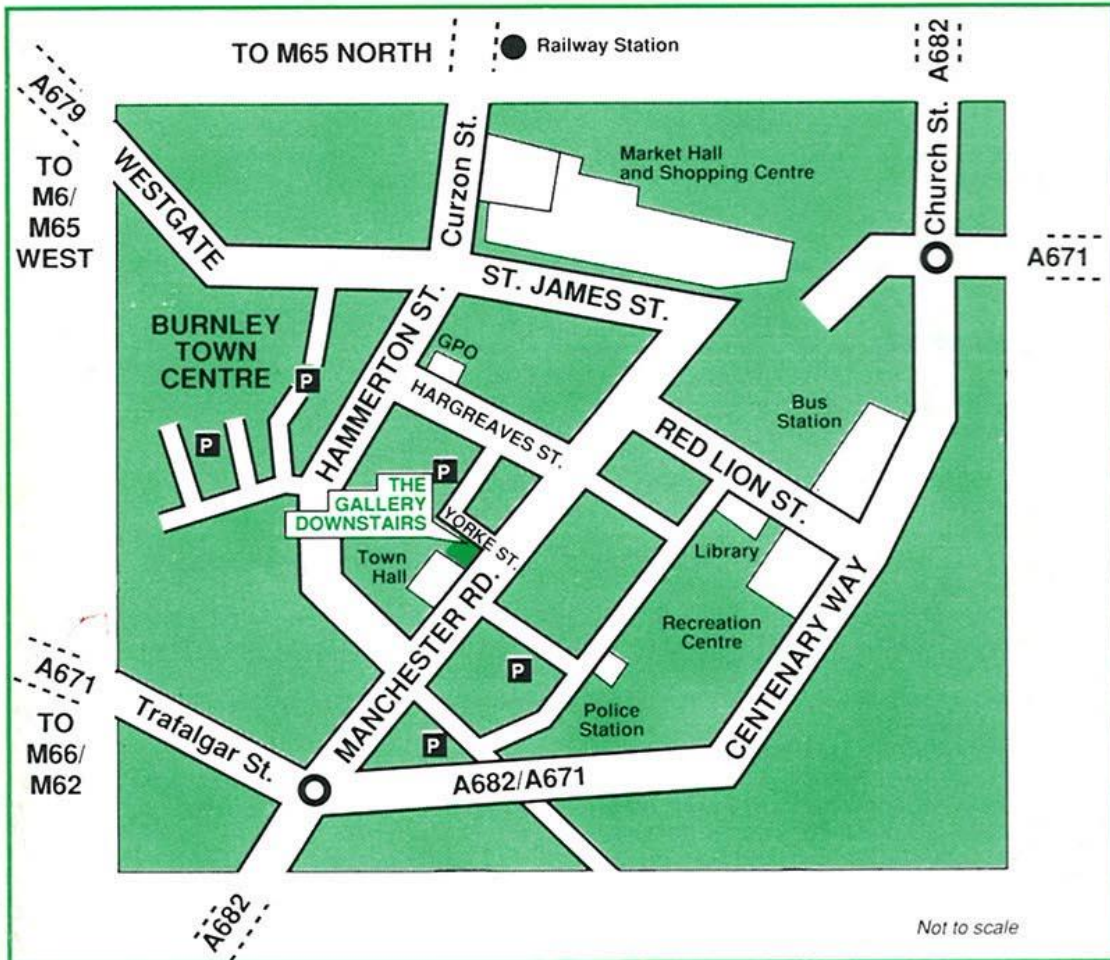
Brian Eburah

info



MID-PENNINE
ARTS ASSOCIATION

Yorke Street, Burnley. Tel Bly. 21986



HOW TO GET TO THE GALLERY DOWNSTAIRS - The Gallery Downstairs is situated in Burnley town centre just a few minutes walk from bus and train stations and from inexpensive car parks.

MPAA's Offices are open Monday to Friday 9.00 a.m. to 5.00 p.m.
Closed for Easter on Friday 24, Monday 27 and Tuesday 28 March 1989.

The Gallery Downstairs is open Monday to Friday 10.00 a.m. to 6.00 p.m.
Saturday 10.00 a.m. to 4.00 p.m. Sunday 2.00 p.m. to 4.00 p.m.
Closed on Good Friday 24 March 1989.

Easter Monday and Tuesday, 27 and 28 April, open 10.00 a.m. to 4.00 p.m.

Mid-Pennine Arts Association gratefully acknowledges the financial assistance of the Borough Councils of Burnley, Ryndburn, Pendle and Rossendale, the Town Council of Todmorden, North West Arts, Yorkshire Arts and Lancashire County Council.



The information in this brochure is correct at the time of going to press but MPAA reserves the right to cancel or amend the programme due to unforeseen circumstances.

WORKSHOPS – DEMONSTRATIONS

See how it's done

The Gallery Downstairs.

ORIGAMI

Saturday 14 January 10.00 a.m. - 4.00 p.m.

With a minimum number of deft folds WAYNE BROWN will be achieving remarkable effects with his unusual origami sculptures.

BRAILLE

Saturday 28 January 10.00 a.m. - 4.00 p.m.

JIM FALLON will demonstrate the intricacies and sensitive touch necessary to use a Braille machine.

FIBRE FUSING

Saturday 25 February 10.00 a.m. - 4.00 p.m.

Watch SANDRA YORKE create limitless brightly coloured non-woven pieces from ribbons, threads and fragments of fabric.

TEXTILE SKILLS WORKSHOP

Gannow Community Centre, Burnley

Tuesday 14 February 7.00 - 10.00 p.m.

Volunteers with community groups and groups with special needs are invited to join this basic skills workshop to familiarise themselves with techniques for screen printing, batik and tapestry. The workshop, led by TRACY O'CONNOR, will present an opportunity for participants to practise and experiment with these basic skills. It will include a general discussion session to talk about practical problems and analyse progress.

Places are limited to 12.

Admission to the workshop is FREE and materials will be provided for a small charge on the night.

Further details from MPAA.

Promoted In Association with Gannow Community Centre

CIRCUS MURAL PROJECT

The Gallery Downstairs

Monday 20 - Friday 24 February

During February, an exciting educational project involving Sixth Formers from schools and colleges throughout the area, will take place at The Gallery Downstairs. Led by mural artist, JOHN UPTON, they will spend a week drawing and painting a series of mural panels on the theme of Circus. The mural will then be permanently sited in Rossendale General Hospital, Rawtenstall.

Further information from MPAA.

POTTERY WORKSHOP

Pottery with GORDON COOKE.

The Gallery Downstairs

Saturday 11 March 10.00 a.m. - 4.00 p.m.

Learn more about Gordon Cooke's pottery techniques and make two pots of your own during this one day workshop in The Gallery Downstairs. Gordon will give step by step demonstrations of his techniques and methods for building pots; participants will complete a "window" sculpture using textural pieces for decoration and a second piece involving the use of templates. The workshop is suitable for both experienced potters and those with no previous knowledge.

All materials will be provided.

Further details and registration forms from MPAA.

Maximum Numbers 12.

Fee £12.00, Concessions £7.00

Closing Date for registration 3 March.

FIBRE-FUSING WORKSHOP

Creating Non-Woven Fabrics

Accrington and Rossendale College, Blackburn Road, Accrington

Saturdays 15 and 29 April 10.00 a.m. - 4.00 p.m.

Develop simple designs and learn the techniques to create your own non-woven fabrics on this two day workshop led by SANDRA YORKE. Produce lengths of brightly coloured non-woven fabric quickly, cheaply and conveniently. Create your own individual wall hanging or complete a fashionable garment within this exciting course. Sandra's work will be on display in The Gallery Downstairs from 11 February to 14 March and she will be demonstrating in the Gallery on Saturday 25 February.

Further details and registration forms from MPAA.

Places are limited to 16.

Fee £25.00.

Closing date for registration 7 April.

Promoted in association with Accrington and Rossendale College.