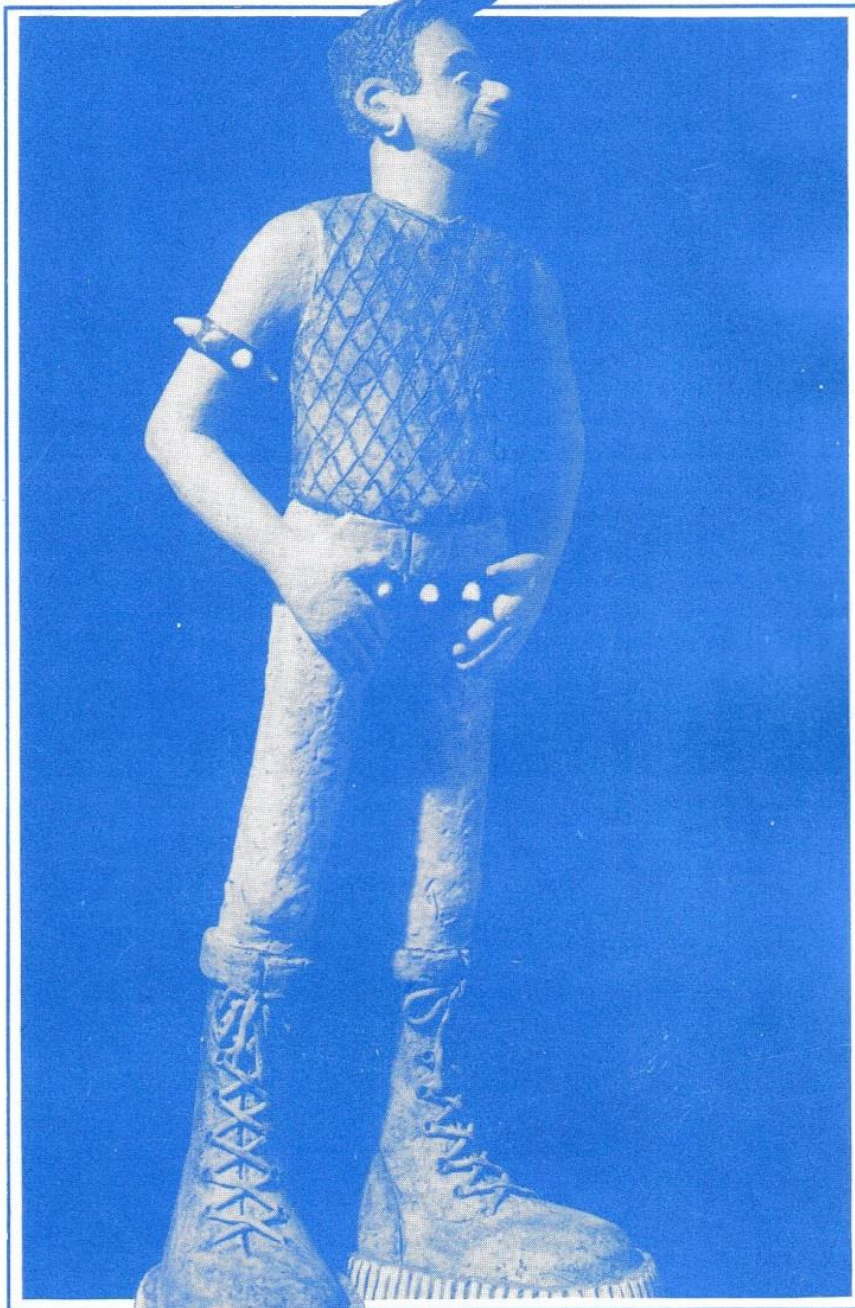


MID-PENNINE ARTS ASSOCIATION

The
GALLERY
Downstairs



Sarah McDade

**SUMMER
1989**

VISUAL ARTS

MAY

MAinspace

CREATURES

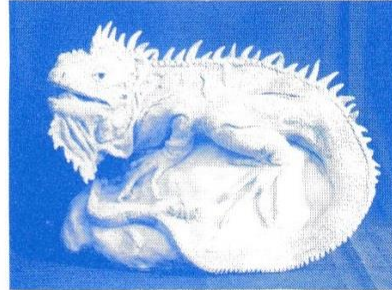
An Exhibition of Ceramics

A giant crab, a duck that ducks, several iguanas, packs of horses, a story-telling fish, flocks of birds and even the odd (very odd) human take over The Gallery Downstairs this month. Contemporary craftsmen have transformed into ceramic reality the creatures of our dreams, some great, some small, some friendly, and some distinctly sinister.

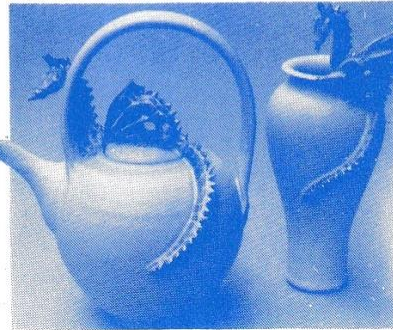
Some of these animals exist purely as adornment on everyday ceramics, some are pieces of ceramic sculpture, and other animal forms are inseparable from the function of the piece, for example a bird becomes a jug and a fish a spoon.

Creatures is a unique new exhibition put together by The Gallery Downstairs – Don't let these creatures escape before you get a chance to see them!

22 April – 30 May



Imogen Margrie



Bridget Drakeford

CRAFTS

MAINLY MEN

22 April – 30 May

An exciting array of craftwork made mainly by men almost exclusively for men – with bags, ties, boxes, jewellery and more – even etchings!

TIM COHEN makes silver jewellery for men with a range of tie pins, cuff links and single earrings in striking original designs.

DAVID HILTON's elegant stoneware shaving bowls, brushes and razors are subtly decorated in muted colours.

ROSEMARY ATKINSON weaves sophisticated scarves and ties which exploit the soft lustrous quality of heavy spun silk in rich iridescent colours and bold geometric designs.

Also on show are hand made wooden boxes by PAUL NICHOLLS, brightly coloured ties and bow ties from PAUL EMMERSON and coloured dry point etchings and woodcuts by DAVID COOK.



Tim Cohen

MAY

JEWELLERY SHOWCASE

Each month our jewellery showcase features work by two jewellers – and it's not just on show, most pieces are also for sale.

22 April – 30 May

NINA EMBLING

Circles, wing shapes and other natural forms are featured in Nina Embling's range of jewellery which includes silver and gold brooches, earrings and cufflinks, diamond rings and necklaces strung with semi-precious beads and pearls.

BRIAN EBURAH

Brian's gold, silver and titanium brooches, earrings and necklaces with highly polished, chased surfaces follow flowing natural lines. Each is an individually designed, one-off piece.

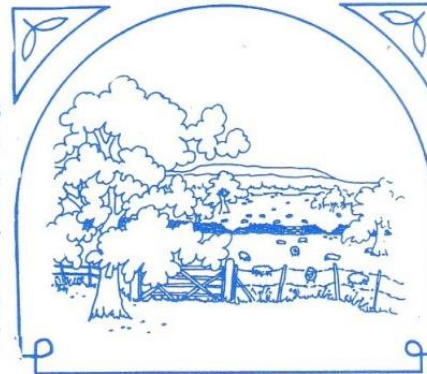


SEE HOW IT'S DONE

BUFFY ROBINSON – Batik

Saturday 27 May 10 am – 4 pm

You may well have seen Buffy's work; her cards, paperweights and prints, inspired by animals, plants and the Lancashire landscape are made using her special technique of batik painting, which she will be demonstrating in The Gallery Downstairs.



WORKSHOP

SARAH MCDADE

The Gallery Downstairs

Saturday 20 May

10 am – 12.30 pm

or 1.30 – 4 pm

Registration fee £1.50



Sarah McDade's friendly Teds and fat sunbathing lady make likeable human "Creatures" in this month's main exhibition in The Gallery Downstairs. Sarah will be running an exciting Pottery workshop in which 8 – 11 year olds can make their own creature out of clay. The cost (£1.50) includes all materials. Up to 12 per session. Call MPAA for registration forms.

NO TOUCH, NO SMELL, NO MESS

Artists working with the Computer

PAUL CLIFFORD & CHARLIE HOLT

3 June – 2 July

For the artist, computer technology has provided perhaps the most radical challenge in image making since the birth of photography, offering a totally new means of artistic statement.

An image can be created on a screen without any direct handwork, paints or inks – hence 'No touch, no smell, no mess'.

This exhibition brings together the work of two artists who are beginning to integrate computer technology in their work processes, yet value their experience of pre-computer media.

On display will be examples from each artist produced both before and after experimenting with computers, as well as their computer generated work. Additionally computers from Research Machines in Oxford and Computers for Business and Leisure in Blackburn will be in the gallery. The two artists participating in the exhibition will, at certain times, be in attendance to demonstrate their particular techniques and help visitors to work with the computers. See Artists in the Gallery for details.



Charlie Holt

CRAFTS

NORTHERN LIGHTS

3 June – 2 July



Tessa Garside



Lorna Moffat



Neil Yates

PHILIPPA MERRIMAN is a silversmith who produces tableware and a wide variety of individual pieces, many of which incorporate wood or gold. Watch Philippa at work when she spends a day at The Gallery Downstairs – more details in "See How it's Done".

Lancaster-based **TESSA GARSIDE** creates a range of jewellery using precious metals such as copper or brass and various other natural and manmade materials.

NEIL YATES of Kendal Glass Engravers uses fine quality glass and crystal, and a special sand etching technique to create everything from simple, bold designs to beautifully three-dimensional landscape illustrations.

Ancient and modern embroidery techniques, layering, cutting and applique all go to make **LORNA MOFFAT's** rich, decorative wall hangings, sofa/bed throws, cushions, mirrors, and screens from silk dupion, taffetas and cotton velvets.

JUNE

ARTISTS IN THE GALLERY

The two artists participating in "No Touch, No Smell, No Mess" will be in the gallery to demonstrate their particular techniques and help visitors experiment with the computers on display.



Sat. 3 June
PAUL CLIFFORD

Paul Clifford, former Head of Art at Nelson and Colne College, uses imagery derived from the ethnology of Africa and India in his prints and paintings.



Sat. 10 June
CHARLIE HOLT

Watch as Charlie Holt, whose work takes inspiration from the theme of the Garden of Eden, juxtaposes images on the computer screen.

RM
RESEARCH MACHINES

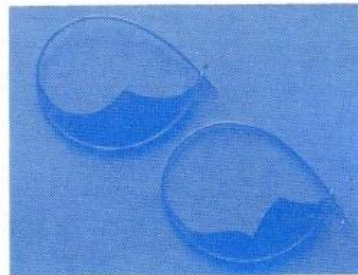
CBL COMPUTERS FOR
BUSINESS AND
LEISURE

JEWELLERY SHOWCASE

3 June – 2 July

JOHN McKELLAR

In John McKellar's range of earrings and brooches colourful surfaces and textures are created by chemically patinated copper and brass decorated with polished silver wires.



John McKellar

ANNABELLE MCKENZIE

Ebony, mahogany, kingwood, ash, boxwood and colourful stained veneers are carefully laminated in various combinations, re-sectioned and re-aligned to form intricate chequered and striped designs in these beautiful and durable earrings by Annabelle McKenzie.



Annabelle McKenzie

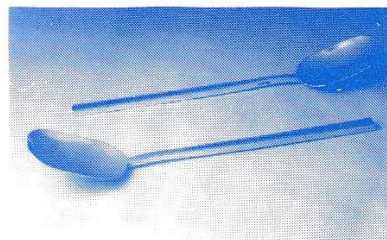
JUNE

SEE HOW IT'S DONE

PHILIPPA MERRIMAN Silver Spoons

Saturday 24 June 10 am – 4 pm

If you are curious to see just how the beautiful silverware on display in this month's Gallery Showcase is made, come and watch Philippa working on silver teaspoons.



ACCRINGTON & DISTRICT B O N S A I S O C I E T Y A N N U A L S H O W

**Sat. 10 June
10.00 a.m. – 4.00 pm**

Accrington Town Hall
Admission 50p
Concessions 25p

TERRY HODKINSON – Stick Dressing

Sheepdogs, pheasants, trout and snakes have been the inspiration for the beautiful horn handles fashioned by Terry which provide the perfect finish for shepherd's crooks, ornamental and walking sticks.

HEATHER COOK – Sculpted non-metal jewellery

Heather Cook stitches, tufts, knits and binds leather, paper, yarns, feathers, wood, and handmade and decorated beads to make highly original one-off pieces of jewellery.

J U L Y

JEWELLERY SHOWCASE

6 July – 25 July

SARAH BROWN

In addition to being selected by The Design Council, Sarah Brown's strikingly modern silver and copper jewellery has been featured in several magazines, commissioned by Jean Muir, and worn by Grace Jones in the Bond film, A View to a Kill.



RACHEL GOGERLY

Rachel Gogerly's speciality is enamel, which she combines with silver and gold to create classic brooches, earrings, cufflinks, rings, and buttons.



JULY

MAINSPACE

6 – 23 July

IGLOOLIK

*Towards the night,
Towards the light*

Ruth R. Stirling



For six months Scottish photographer, Ruth R. Stirling, lived and worked in Igloolik, a small island community near Baffin Island in the Canadian Arctic. As well as teaching art and photography she recorded sounds and images, in photographs and paintings. This exhibition of her work reflects her experience of the people of Igloolik. It confronts the traditional preconceptions of the Inuit north and explores the complexity of contemporary social and cultural issues. The voices she recorded belong to a range of people, both old and young, some indigenous, some from outside the area. The sound track also includes drumming and traditional Inuit throat music.

Although IGLOOLIK comes to The Gallery Downstairs in the middle of summer the pictures, sound, and specially created dark and light environments will combine to produce an entirely different atmosphere: an informed and sensitive interpretation of a little known, faraway place.

A touring exhibition from the Collins Gallery, Glasgow.

CRAFTS

SUN-DECKED

6 – 23 July



Sonia Brown

Whatever the weather outside, July will be sunny in The Gallery Downstairs!

Inspired by both architectural and natural forms, and using a technique similar to batik, JUDY DWYER paints abstract designs on to a variety of luxurious fabrics to make beautiful brightly coloured scarves, dresses and shirts.

Appliquéd and embroidered plant and flower forms decorate SONIA BROWN'S exquisite parasols.

From HOTHOUSE, a company formed by three young designer craftsmen, comes beautiful studio glassware of quite exceptional quality.

The seaside, Matisse, Kandinsky, and Dufy are all influences on the bright blue and sunny golden yellow decoration of MAJOLICA WORKS' domestic and decorative pottery.

AUGUST

MAinspace

FIRE & ICE

29 July – 29 August

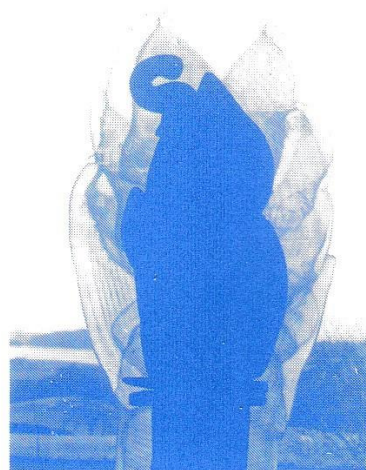
CHARLES BRAY: Glass Sculpture

For Charles Bray glass is seductive. It is also one of the most frustrating and challenging materials to work due to its unpredictability, but the occasional setback is well compensated by the numerous possibilities of potentially exciting and fruitful avenues of exploration which appear to the artist. Despite the constant updating of knowledge, technology and skill, Charles Bray has continued to find sufficient mystery and inspiration in glass to wish to overcome and profit from its physical limitations. His success is such that his glass sculptures have been exhibited all over the world and hold a place in many public and private collections.

ARTIST IN THE GALLERY

Sat. 5 August
CHARLES BRAY

Charles Bray, whose magnificent glass sculpture takes over the main gallery this month, will spend a day with us answering questions and demonstrating some aspect of his work.



CRAFTS

29 July – 29 August

FUN-DIALS

A collection of clocks for more than just telling the time. PAUL CROFT's designs use an enormous variety of materials, and especially stained fretwork to make imaginative clock-pictures.

JAMES CHEDBURN's clocks are almost puzzles, deliberately difficult to read; and based on five themes – Gothic Architecture, Science Fiction, Religion, Mythology, and Plumbing.

With their fascinating range of high quality paper-sculpted time pieces CLEVER CLOCKS aim to stimulate curiosity and conjecture on their subject.

IAN BARRETT produces clocks with a modern geometric look, fabricated from resin and lightweight plastic on which the time is denoted by the relationship of three differently coloured dots.

TICKERBOX offers brightly coloured pictorial three-dimensional clocks, all highly user friendly!

AUGUST

JEWELLERY SHOWCASE

29 July – 29 August

MICHAELA HAYWARD

A variety of richly decorative etched and enamelled rings, earrings and brooches in silver and nickel drawing their inspiration from eastern textiles and architecture.



MARGOT HARTLEY

Margot Hartley makes highly individual earrings out of combinations of either silver and brass, or copper and silver using some adventurous oxidising techniques.

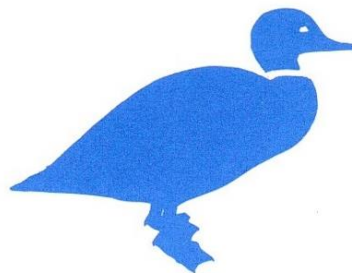


SEE HOW IT'S DONE

12 August 10am – 4 pm

DAVID TIPPEY – Decoy Ducks

Originally used in hunting, wooden ducks made to look as realistic as possible became a flourishing American folk art and are now increasingly popular in Britain. Discover why when David Tippey comes to The Gallery Downstairs to demonstrate how they are made.



ASIAN CRAFTS

Monday 7 – Saturday 12 August

Asian Crafts Exhibition

Nelson Civic Hall
Admission Free

A Celebration of Pakistani culture in a colourful exhibition of exquisite workmanship shown in intricate woodcarving, highly ornate silver, brass and enamel ware, beautiful leatherwork, embroidery, calligraphy and jewellery. There will also be craft demonstrations.

Monday 12 – 6 pm

Tuesday, Wednesday, Thursday 10 am – 6 pm

Friday 10 am – 8 pm

Saturday 10 am – 4 pm



SEPTEMBER

MAinspace

THE EXPERIENCE OF LANDSCAPE



2 Sept – 3 Oct

Carel Weight

From the mountain wildernesses of Scotland and Wales to the Suffolk coast, the hills and cliffs of Cornwall to the open spaces of central London, Britain's landscape is enormously varied – a variety reflected in *The Experience of Landscape*. Paintings, drawings and photographs by 53 post-war artists – including L S Lowry, Bill Brandt, Paul Nash, David Bomberg, Victor Pasmore, Duncan Grant, Winifred Nicholson, Ivon Hitchens and the Boyle Family – make up this touring exhibition selected from The Arts Council Collection.

The exhibition brings together some of the best landscape work of the post-war years not simply as a chronological survey but arranged thematically. Some pictures are grouped by type of landscape: views through windows, gardens, farmland, dense undergrowth, close-ups, wide-open expanses and far distances, wind and night. Other juxtapositions reflect ideas or feelings behind the pictures.

There will be an informal talk on the subject of this exhibition in the gallery on Saturday 9 September.

A touring exhibition from the South Bank Centre.

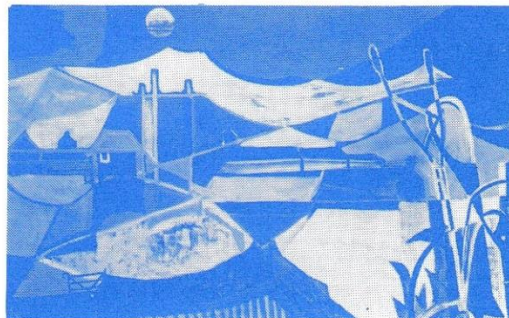
ILLUSTRATED TALK

Saturday 9 Sept, 11 am

The Gallery Downstairs

MICHAEL RAINSFORD

Admission Free



Brian Wynter

Michael Rainsford will give an informal, illustrated talk on the British landscape tradition, the subject of this month's main exhibition.

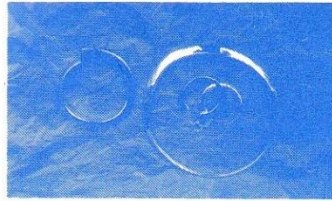
SEPTEMBER

JEWELLERY SHOWCASE

2 Sept – 3 Oct

GORDON LOCHHEAD

Gordon Lochhead brings his skills as a sculptor and bronze founder to the manufacture of sophisticated jewellery in silver and bronze.



SUSAN MAY

A range of silver and gold-plated brooches and earrings called 'Crazy Jazz' and cold forged rings in 18ct gold and silver are featured in Susan May's display.



CRAFTS

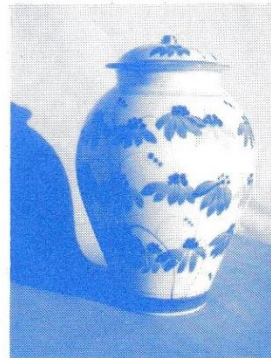
2 Sept – 3 Oct

ORIGINS

Derek Emms, is a potter with a far-reaching reputation and we are delighted to display a selection of his functional yet elegant domestic pieces in our showcase.

Over the last 30 years he has been invited to exhibit his porcelain and stoneware throughout Britain and abroad and has work in public and private collections all over the world. He now lives in "The Potteries" area of the Midlands but his origins are local. He was born in Accrington, educated in the town and later in Burnley and Leeds.

Derek Emms will also be giving a lecture demonstration on 28 September (for details see panel).



LECTURE DEMONSTRATION

Burnley Mechanics

Thursday 28 Sept 1 – 4 pm

Students 85p, Teachers free.

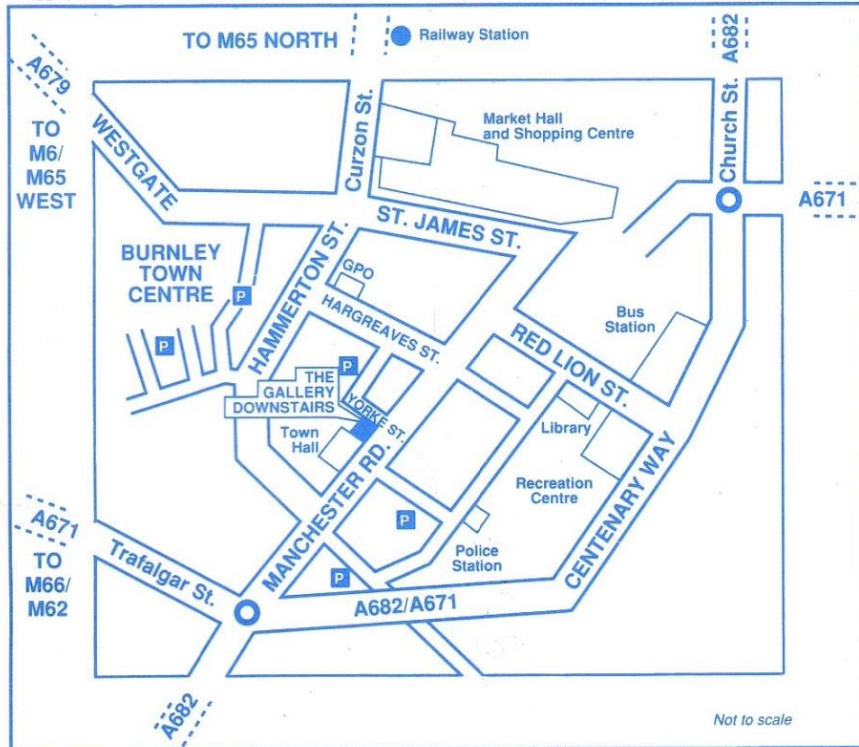
DEREK EMMS

Derek Emms, a highly experienced and successful potter whose work is displayed in this month's Gallery Showcase, will explain and demonstrate the materials and techniques he employs in the design, production and decoration of his stoneware and porcelain.



MID-PENNINE ARTS ASSOCIATION

Yorke Street·Burnley·Tel·(0282) 21986



Mid-Pennine Arts Association is based at The Gallery Downstairs. The Gallery Downstairs is in the centre of Burnley, just off Manchester Road and easily accessible by both private and public transport. The bus station (see map) is within 2 minutes' walking distance, as are BR Stations – Burnley Central (6 minutes) and Manchester Road (2 minutes). At weekends and evenings parking is available in an adjacent car park. See map for other inexpensive car parks.

OPENING HOURS

Monday to Friday 10.00 a.m. to 6.00 p.m.

Saturday 10.00 a.m. to 4.00 p.m.

Sunday 2.00 p.m. to 4.00 p.m.

Mon. 1 and Tues. 2 May, Mon. 29 and Tues. 30 May and

Mon. 28 and Tues. 29 August 10.00 a.m. to 4.00 p.m.

FACILITIES FOR THE DISABLED



We are always pleased to welcome disabled people to The Gallery Downstairs – just ask if you would like a Gallery Attendant to help you. We offer specially designed toilet facilities and ramped access.

ADMISSION IS FREE



Mid-Pennine Arts Association gratefully acknowledges the financial assistance of the Borough Councils of Burnley, Hyndburn, Pendle and Rossendale, the Town Council of Todmorden, North West Arts, Yorkshire Arts and Lancashire County Council.

The information in this brochure is correct at the time of going to press but MPAA reserves the right to cancel or amend the programme due to unforeseen circumstances.