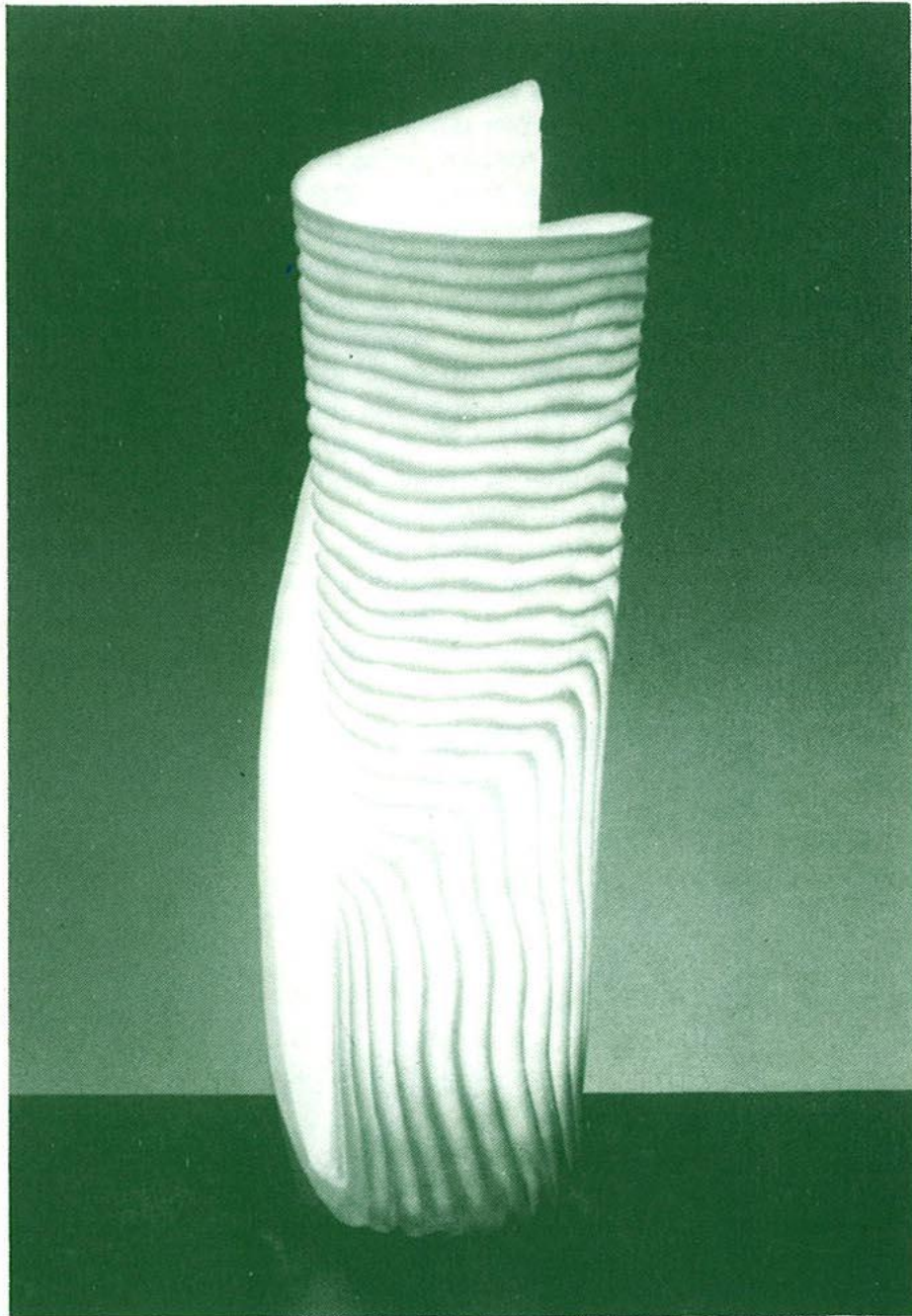


---

*The*  
**GALLERY**  
*Downstairs*

---

**AUTUMN & WINTER 1990/91**



Margaret O'Rorke

---

**MP MID-PENNINE  
ARTS ASSOCIATION**

---

6th SEPTEMBER – 2nd OCTOBER

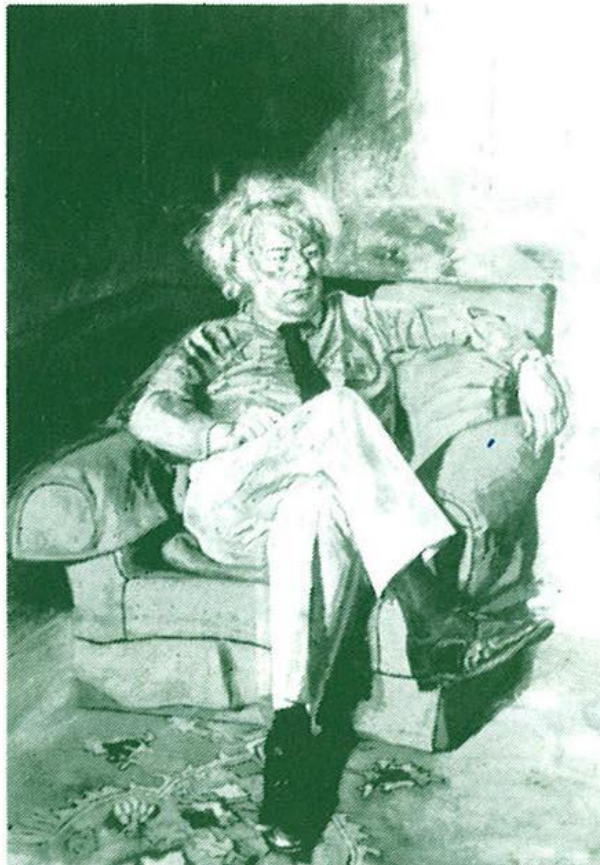
# *Contemporary Poets*

PORTRAITS BY PETER EDWARDS

An exhibition of portrait paintings of contemporary poets by the talented young Shropshire artist, Peter Edwards.

The series of poets was begun in 1985 with 'The Liverpool Poets', a monumental triple portrait of Adrian Henri, Roger McGough and Brian Patten which was subsequently purchased by the National Portrait Gallery. Edward's life-long interest in poetry has led him to seek the acquaintance of a number of other writers and, in committing their likenesses to canvas, to make a bridge between their art form and his own.

An artist of large scale vision, Edwards' portraits are painted with an emotional intensity and relish for the vagaries of the painted surface which at times shows the influence of Francis Bacon. The images vary from the well-defined head of Douglas Dunn set against a breezy sea view to that of Ivor Cutler, settled in his armchair before a background of evocative abstract shapes. These and others form part of the series of portraits which will be exhibited with preparatory oil sketches and drawings. The poets involved have supplied appropriate poems to be used in conjunction with the visual images.



A selection of poetry books from a variety of publishers and small presses will be available for sale during the course of the exhibition.

A Touring Exhibition from The National Portrait Gallery.

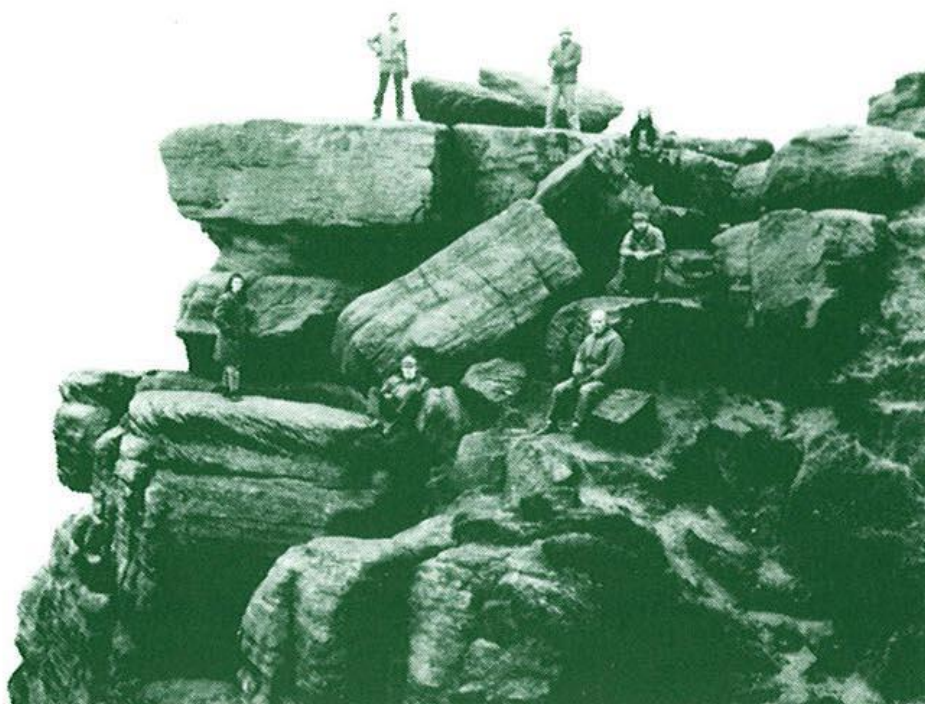
6th OCTOBER – 6th NOVEMBER

## *Crag*

AN EXHIBITION OF PAINTINGS  
AND SCULPTURES.

CALDER RURAL ARTISTS GROUP is an exciting initiative which has recently brought together some of the most established Visual Artists currently living and working in the Calder Valley area. Artists who were hitherto working in isolation have united as a group, to exhibit within the area in which they live, and so make themselves available and accessible to the local community.

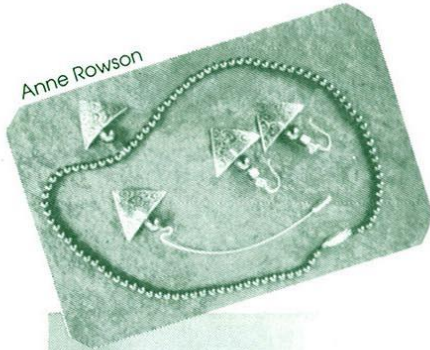
We are delighted to be hosting CRAG's first major exhibition in the Gallery Downstairs. As individuals each member of the group has an established reputation as a painter or sculptor. Members exhibiting are: Colin Rose, Bohuslav Barlow, Sally Ducksbury, Anthony Cook, Milena Dragic, Sheila Tilmouth, Michael Exall, Alan Gummerson, Paul O'Reilly and Ken Turner.



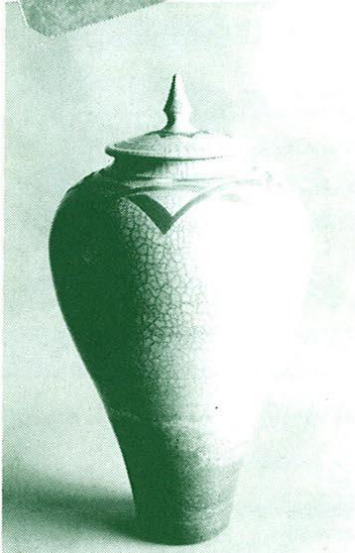
# AINSPACE

10th NOVEMBER - 22nd DECEMBER

## Christmas Crafts



Anne Rowson



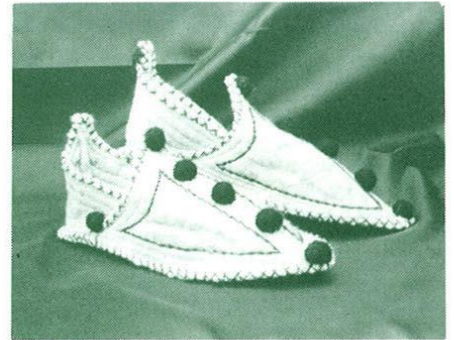
Paul Muchan

A dazzling display of crafts for the whole family to enjoy. Whether browsing or choosing a special Christmas present the Gallery Downstairs is filled with eye-catching and original works to inspire and desire.

Work by professional artists with innovative ideas and one-off designs encompass many skills. The variety of exhibits is almost endless from carved stone sheep to hobby horses - pretty felt slippers to exquisitely decorated mirrors. Domestic ware both practical and decorative includes opaque glass vases and delicate perfume bottles, carved wooden dishes and raku bowls. Jewellery, hand painted silk scarves, felt hats and designer ties to suit all tastes - from discreet to extrovert. Books, paintings, prints, wall hangings...don't miss our third Christmas Crafts Exhibition at the Gallery Downstairs.



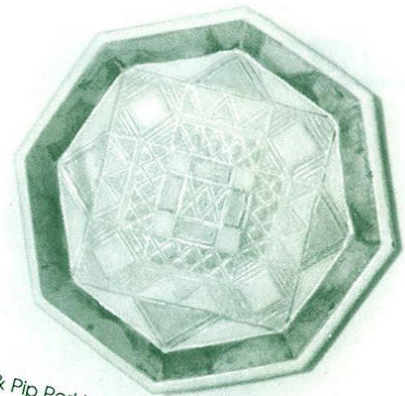
Annabel Porter



Judy Scarland



Pat Koye



Guy & Pip Perkins

10th JANUARY – 12th FEBRUARY

## *Woven Responses*

AN EXHIBITION OF TAPESTRY  
WEAVING BY SHIRLEY ROSS &  
IVOR WESTWOOD

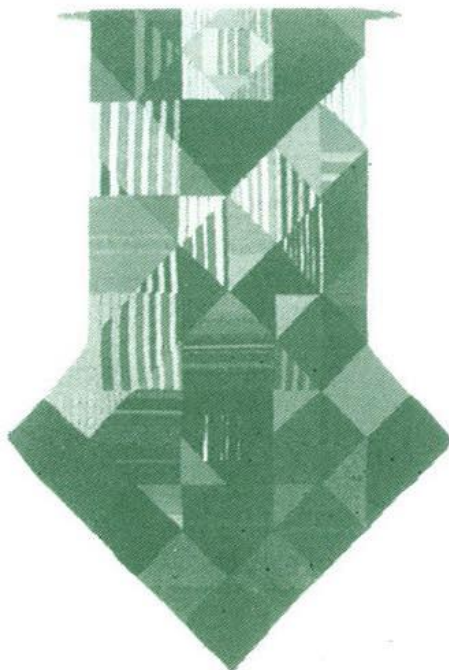
Textile artists Shirley Ross and Ivor Westwood design stunning tapestries from their shared studio in Dewsbury. All the works are produced on either a shaft loom or a tapestry frame using mainly woollen yarns.

Abstract works exuding with energy and vibrant colour are created in response to natural and man made landscapes. Other pieces are concerned with the similarities of small fragments of areas – or to the whole in terms of line, form, texture and the play of light and shade across textured and patterned surfaces.

Shirley is hoping to work in the Gallery at various times during the exhibition and a loom with work in progress will be included in the display.

### **DEMONSTRATION**

Shirley Ross will be demonstrating her weaving techniques and talking about her work in the Gallery on **Saturday 19th January** between 10.00am and 4.00pm.

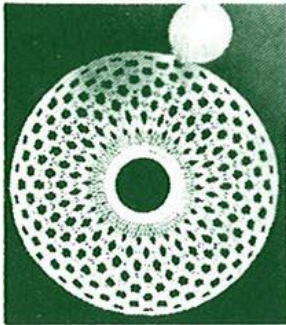


# JEWELLERY SHOWCASE

6th SEPTEMBER – 2nd OCTOBER

## JENNY TURTILL

Highly desirable earrings, large brooches, neckpieces and bracelets are made from a combination of materials including silver, bronze, pieces of stone, blued steel and even bone! Natural and abstract forms are derived from nature, slightly domed shapes are etched, cast or forged to create a textured surface pattern in a collection accessible to all ages.



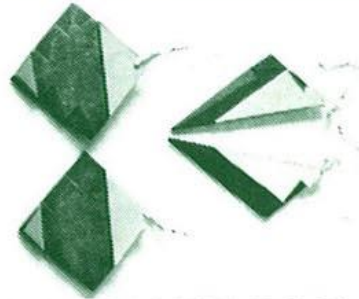
## WALLY GILBERT

Bold shapes with open and delicate lace-like patterns in silver and bronze. Sculptural forms and unusual pieces based upon the collection of the Victoria and Albert Museum. Fine open work is created by casting and fabrication. Necklaces, studs and earrings with pierced or clip button fastenings for every occasion.

6th OCTOBER – 6th NOVEMBER

## LIZ OAKLEY

Hallmarked silver and slate jewellery carved into stunning geometric shapes with a whisper of slate to decorate and enhance the bold outlines. Welsh, Spanish and Lakeland slate provide a variety of shades for this imaginative collection.



## ROSALEEN ROCHE

Silver and gold feature in three striking collections. A hand chased and repoussed 'Eastern' range features plumes and feathers in striking swirls, some with semi-precious stones. 'Industrial' inspires squares and circles geometrically patterned with studs of silver or carved lines to contrast with the swirling domed earrings and brooches of 'Celtic' design.



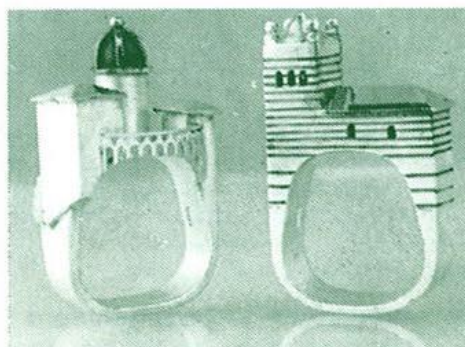
10th JANUARY – 12th FEBRUARY

## VICKY AMBERY SMITH

Vicki Ambery-Smith grew up in Oxford and believes the dreaming spires influenced her intricate gold and silver jewellery which is all based on architecture.

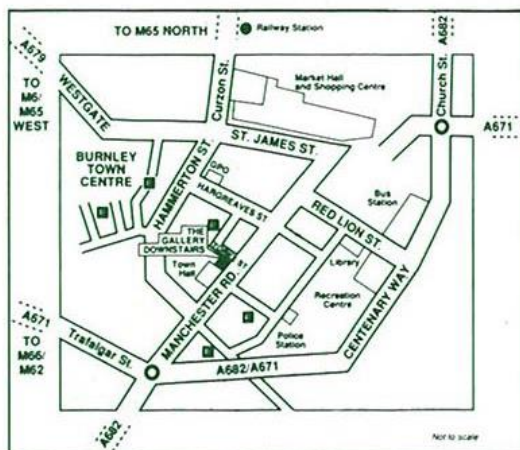
## GAIL KLEVAN

Gail works in acrylic, her brightly coloured pieces are backed with silver and gold leaf before varnishing. Earrings are individually drawn to make each piece unique.



# MID-PENNINE ARTS ASSOCIATION

**THE GALLERY DOWNSTAIRS**  
YORKE STREET, BURNLEY, BB11 1HD  
TELEPHONE: BURNLEY (0282) 21986, 29513



## OPENING HOURS

Monday - Friday 10.00am to 6.00pm  
Saturday 10.00am to 4.00pm  
Sunday 2.00pm to 4.00pm

Christmas Closing: The Gallery will be closed from December 22nd to January 12th 1991.

## FACILITIES FOR THE DISABLED



We are always pleased to welcome disabled people to The Gallery Downstairs - just ask if you would like a Gallery Attendant to help you. We offer specially designed toilet facilities and ramped access.

## ADMISSION IS FREE

## TO ALL TEACHERS

At The Gallery Downstairs we try to increase enjoyment and understanding of the contemporary visual arts for the whole community. With developments in the Gallery's programme we are able to offer facilities for practical workshops, study sessions, talks and seminars both to schools and colleges and other interested groups. Unfortunately it is necessary to close the Gallery for a few days between exhibitions and occasionally children sent by teachers have been disappointed not to see an exhibition.

A quick phone call to check that we are open can ensure that there is an exhibition on show and that someone is available to give help if required.

Mid-Pennine Arts Association gratefully acknowledges the financial assistance of the Borough Councils of Burnley, Hyndburn, Pendle and Rossendale, the Townships of Todmorden and Whitworth, North West Arts Association, Yorkshire Arts and Lancashire County Council.



The information in this brochure is correct at the time of going to press but MPAA reserves the right to cancel or amend the programme due to unforeseen circumstances.

## GALLERY SHOWCASE

6th SEPTEMBER – 2nd OCTOBER

### THE ART OF CALLIGRAPHY

Calligraphy is a sadly neglected subject in many art departments and is more usually associated with the formation of beautiful letters on manuscript or lettering with a commercial application. The four artists whose work is featured in our Gallery Showcase have extended their art form to give a different perspective on the subject.

Only one artist combines paper with his words, but the paper is two dimensional in form with words to create a third. Work by Duncan Linklater and Ron Walker features inscriptions, quotations and lettering on wooden and ceramic plates and bowls. Welsh slate is used by Sarah More to produce carved inscriptional plaques. Words of meaning enhance the object and provide decoration.



6th OCTOBER – 6th NOVEMBER



### GLOWING IMAGES

Inspiration from the translucency of fine highfired porcelain and a desire to create the peaceful atmosphere of oil and candle lamps have encouraged Margaret O'Rourke to create her magical collection of porcelain lights.

The work is mainly thrown on a potter's wheel and some pieces are reformed while wet. When the work is leather hard a hole is made in the base for the fitting and sometimes pieces are carved or fluted to give movement to the form. The work is biscuit fired before glazing with a final firing to 1300 c; at this temperature the fine porcelain gives a natural warm tone when lit.

Sizes range from twelve to sixteen inches, some stand on thrown stems over two feet high. Margaret also takes commissions, designing and making lights for specific locations.

10th JANUARY – 12th FEBRUARY

### SCULPTED PORTRAITS

SAM TONKISS'S work is much sought after and treasured by those who possess it. Sam did not take up portrait sculpture until he was fifty but his natural talent was soon recognised and commissions of the famous and not so famous soon followed.

His work has been described as ... "a speaking likeness and when you stand among these sculptures you feel that you are among living people rather than merely examining a number of masks".

Sam Tonkiss was born in Shropshire but spent all his working life in Todmorden, first in industry then journalism, to become Editor of the local newspaper; now in his eighties with an international reputation his work is in the permanent collections of galleries throughout the United Kingdom and abroad.





# WORKSHOP

Wednesday 10th & 17th OCTOBER 7.30pm

## LINO CUTTING with Mike Pemsel

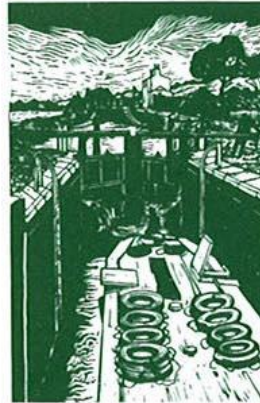
The Gallery Downstairs, Burnley  
Registration £10 for two sessions

Learn the art and skills of lino cutting, explore line, texture and colour in designs based on your own drawings or from patterns found in nature

Lino Cutting is a direct and inexpensive, yet remarkably subtle and effective medium – the equipment is uncomplicated and the techniques simple to master.

It is hoped that participants will accomplish a finished print and gained an insight into the numerous possibilities this medium offers. All materials will be provided – old clothing and an apron are advisable.

Maximum 12 participants.  
Closing date for registration  
Friday 5th October.



Tuesday 20th November 7.00pm

## FILMS

Nelson & Colne College, Linden Rd., Colne

Enjoy two films which portray the life and work of 20th Century artists, Graham Sutherland and Carel Weight...

**'THE LAST OF THE GREAT VICTORIANS'** The melodrama of Victorian artists is clearly seen in the emotion of CAREL WEIGHT's landscapes and portraiture. Weight discusses his use of Biblical subjects and his love of silent film in which every gesture, every expression, contributes to telling the story.

The second film reviews and reappraises the life and work of 'GRAHAM SUTHERLAND'. The artist outlines the major developments of his work but he is frequently remembered as the artist whose portrait of Churchill was destroyed before its unveiling at the National Portrait Gallery.

Presented in association  
with Colne Art Group.

**ADMISSION FREE**



# **HABERGHAM FESTIVAL**

**1st OCTOBER – 4th NOVEMBER**

The Habbergham Festival is a celebration of music, art, drama and workshops which takes place in and around Habbergham High School for just over a month.

## ***EXHIBITIONS IN SCHOOL....***

### **LINO PRINTS by MIKE PEMSEL**

Broad flowing lines, intricate patterns and contrasting shapes in a collection of lino prints by Mike Pemsel. Inspiration is derived from the rhythms of the landscape, natural forms and the effects of the elements upon them.

### **CLOCKS by CAROLINE JELL**

Unusual timepieces in wood, cork and wire are almost sculptural forms featuring winding staircases and lofty gothic arches.

### **'A JOURNEY ACROSS AMERICA'**

Colour photographs by Alan Roberts.

## ***and at GAWTHORPE HALL....***

### **'A ROOM WITH A VIEW'**

The Coach House Gallery,  
Views from the art room window in a mixed media exhibition featuring work by students, staff and visiting artists at the Habbergham School.

### **MUSIC RECITAL**

Friday 12th October 7.30pm  
Habbergham High School  
THE ELMET TRIO present a programme of Baroque Music.

---

SCHOOL PARTIES

We welcome visiting school parties to The Gallery Downstairs.