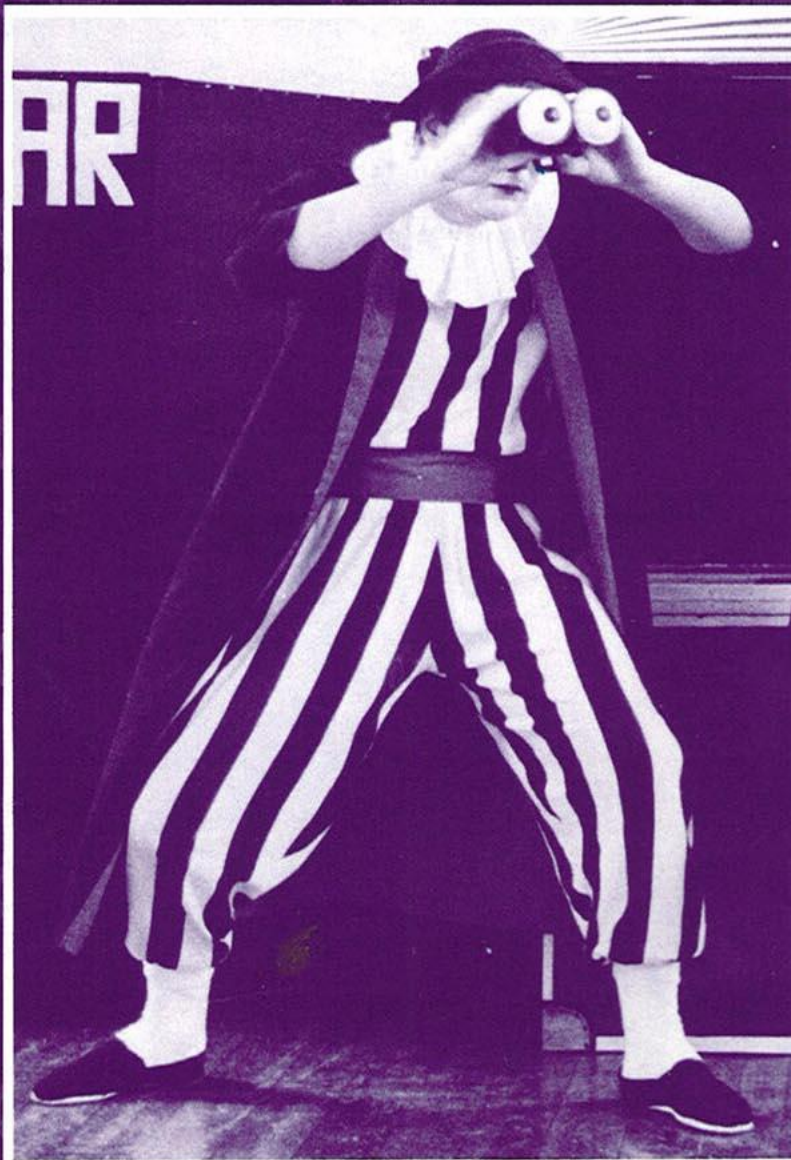


---

MP MID-PENNINE  
ARTS ASSOCIATION

---



*Mimika Theatre*

*Summer '90*

---



21 April - 29 May

## Treasure Gardens

Gardens and their contents have been the source of inspiration for all the artists whose work is on show this month. The most interesting gardens surprise and delight with hidden corners and twisting paths, as does this exhibition.

Changes of light and form, movement, shape and colour are captured in the large and wonderful flower paintings by Jenny Tufts which contrast strongly with the gentle pastels of Christopher Assheton-Stones and the delicate watercolours by Deirdre Borlase, who has produced work for the Royal Horticultural Society.

Dark Germanic wood carvings by Peter Murphy and sculptural figures by Patricia McAllister are just waiting to be explored. Some exhibits have a more practical application, like pots and planters in a variety of shapes and sizes.

Discover secret shadows, areas of calm and hidden treasures within our Gallery Garden.



## 1 June - 26 June The Hogarth Collection of Puppets & Marionettes

Jan Bussell and Ann Hogarth dedicated a lifetime to developing and mastering the craft of puppetry. Travelling together for over fifty years they gathered together the Hogarth Collection of puppet figures. The collection is drawn from all over the world representative examples of all forms of puppetry.



Punch and Judy star alongside a large copy of Muffin The Mule, made famous by Annette Mills and Ann Hogarth on BBC TV in the 1940's. Wonderful examples of Victorian English Marionettes are typical of the troupes that once toured around Europe in the late 19th Century.

Many characters were acquired by the Hogarth Puppets when performing around the world: Devils from Czechoslovakia; An Arab and his Camel presented in Budapest; a Peasant Woman from Moscow; and traditional Malaysian Shadow Puppets sent after a TV broadcast, by a viewer who had let his children use them as toys!

Each puppet is filled with history, legend and fantasy, there are far too many to describe here but we are sure this exhibition will delight both young and old, and perhaps evoke some happy memories.

*A Puppet Centre Touring Exhibition.*

29 May

## Flower Arranging Demonstration

The Gallery Downstairs  
11.00am and 2.30pm

Just in time for our 'Gardens Exhibition' a demonstration of flower arranging by the Burnley Flower Club. The talented members will be sharing their skills and showing us how to display spring blooms to their best advantage. Their arrangements will be on show throughout the remainder of the exhibition to create a colourful display of the 'real thing'.



30 June - 31 July

## FACE TO FACE

An exhibition which portrays the head in art. Work by two artists who have in different ways explored the enigma of the human head. Included in this exhibition is a small selection of work from The Arts Council Collection, to give an example of the treatment of this subject during the last thirty years.

GARY WATERS' formal training in creative photography has emanated in drawings, paintings and monoprints. He became dissatisfied with the camera's inability to imbue images with an emotional intensity, leading him to work physically on both photographic negative and print.

Waters' recent series of heads have an curious intrinsic quality, rather like seeing a figure at night; some almost mask like with Strong marks and lines, uncannily portraying powerful emotions, moods and states.

ALAN JENKINS has been face painting at workshops and community events for many years. His photographs document an incredible range of imaginative designs which transform faces into erupting volcanos, superheroes, a werewolf or abstract. The painted face is the perfect way to enter the world of carnival, allowing good spirits to ensue by the creation of a new identity, the mask evoking courage and enjoyment for the festive day. When the mask is removed the image has gone, its purpose has been served, the art-form disposable.

*Works from the Arts Council Collection kindly loaned by The South Bank Centre, London.*



4 August - 3 September

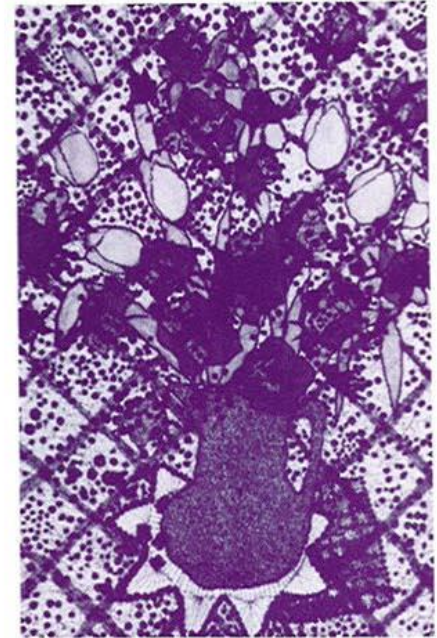
## Shining Lights in the NORTH WEST

An exhibition featuring work by some of the best young crafts people working in the North . We aim to transform The Gallery Downstairs into a showcase which demonstrates the wealth of talent and richness of skills flourishing in the area today.

Original designs and bright ideas from artists who are well on the way to making a name for themselves and who have been producing work for the last five years or less.

Several of our 'Shining Lights' work in textiles using a variety of techniques; some traditional others quite unique.

Forget mass production and enjoy the flamboyant hats, colourful ceramics, intriguing jewellery and fabulous collections of glass. This is an exhibition which contains something special for every visitor.



· ANNE MARIE CADMAN · DEANA MCDONAGH · GAYNOR RINGLAND ·  
· JANE HOLMES · LOUISE ROBERTSON · ALISON DUNKERLEY ·  
· CARYL WEBB · DAWN CLARK · HELEN RUSHWORTH · YVETTE BARLOW ·



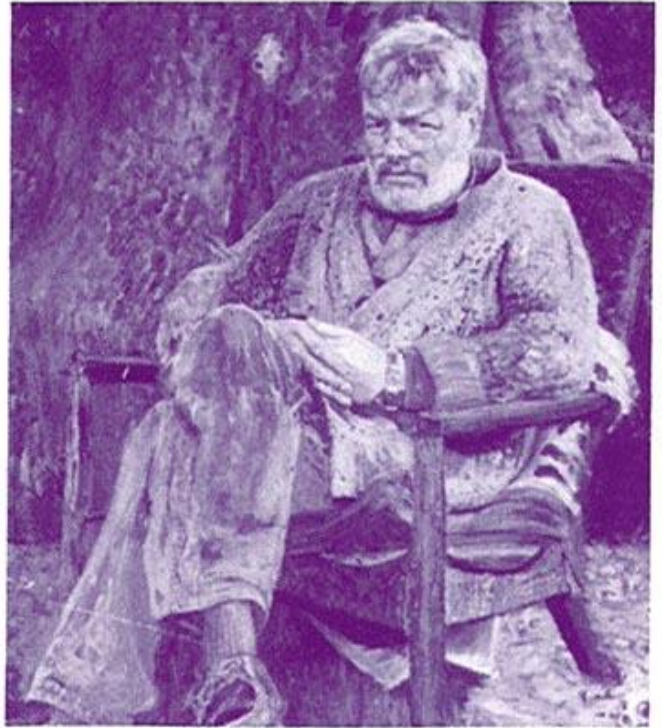
6 September - 3 October

## CONTEMPORARY POETS

PORTRAITS BY PETER EDWARDS

An exhibition of portrait paintings of contemporary poets by the talented young Shropshire artist, Peter Edwards.

The series of poets was begun in 1985 with 'The Liverpool Poets', a monumental triple portrait of Adrian Henri, Roger McGough and Brian Patten which was subsequently purchased by the National Portrait Gallery. Edwards's life-long interest in poetry has led him to seek the acquaintance of a number of other writers and, in committing their likenesses to canvas, to make a bridge between their art form and his own.



An artist of large scale vision, Edwards's portraits are painted with an emotional intensity and relish for the vagaries of the painted surface which at times shows the influence of Francis Bacon. The images vary from the well-defined head of Douglas Dunn set against a breezy sea view to that of Ivor Cutler, settled in his armchair before a background of evocative abstract shapes. These and others form part of the series of portraits which will be exhibited with preparatory oil sketches and drawings. The poets involved have supplied appropriate poems to be used in conjunction with the visual images.

The exhibition will coincide with a Literature Festival in the M.P.A.A. area; a selection of poetry books from a variety of publishers and small presses, will be available for sale during the course of the exhibition.

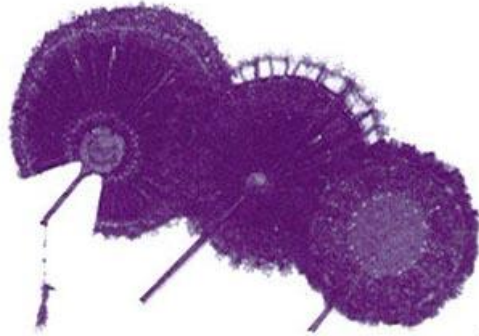
*A Touring Exhibition from The National Portrait Gallery.*



## Fan-tastic

by JULIET HELEN WALKER  
21 April - 29 May

Evoking romantic memories of Bygone days, a collection of fans which are beautiful to look at and lovely to hold, by Juliet Helen Walker. Her work includes delicately embroidered hand held pieces, and large interior works for wall hanging.



Juliet's inspiration is derived from the transparent colours of sea creatures and the surface quality of coral. Embroidered laces, iridescent fabrics and prepared papers have all been combined to create rich colour changes and textured surfaces.

Included in the collection are a number of small framed collages.

## Accrington & District Bonsai Society Show

**Saturday 23 June 10.00am - 5.00pm**

Town Hall, Accrington

Admission 50p

The art of cultivating miniature trees and shrubs is beautifully demonstrated at the Bonsai Society Show. Enjoy the tiny specimens and discover the skills of this ancient oriental art. There are trees and pots for sale with lots of advice on how to get started.

---

## *Asian Arts & Crafts*

### *Exhibition*

**August 23 - 29**

Civic Hall, Nelson

The richness and diversity of Pakistan's culture is clearly demonstrated in the third Asian Crafts Festival. This year a Pakistani street market will be re-created with wonderful spices, vegetables, textiles, ceramics and jewellery. Another highlight will be an exhibition of photographs of Pakistan by Barry Sheridan. Black and white photographs document the everyday sights and activities of ordinary people to reveal rather more of the reality of life in the country than we normally see.

An exhibition from Calderdale Leisure Services

---





---

## THE LADY LEVER ART GALLERY & PORT SUNLIGHT VILLAGE

**EXCURSION**

**Thursday 9 August**

Price £7.00 (price does not include lunch)

Join us on a guided tour of the Lady Lever Art Gallery formed by one man, the 1st Viscount Leverhulme, as the centre piece of his model village of Port Sunlight. The collection of treasures arranged in a suite of fine rooms and sculpture halls surrounds a central great gallery. Notable pictures by Reynolds, Wilson, Turner and many of the Pre-Raphaelites. We will arrive at approximately 12.30pm with a good hour for lunch before the tour. The village of Port Sunlight contains a good restaurant and pub serving reasonably priced lunches and there will be plenty of time to wander around or visit the excellent garden centre.

<b>10.30am</b>	<b>Opposite Health Centre, Leeds Road, Nelson</b>
<b>10.40am</b>	<b>Stand 5, Bus Station, Burnley</b>
<b>10.55am</b>	<b>Top Bus Stand, Infant St, Accrington</b>
<b>11.05am</b>	<b>Opposite New Fire Station, Bury Road, Rawtenstall.</b>

*The closing date for registration is Thursday 26 July*

---

## CRAFT DEMONSTRATIONS

### **Burnley Folk Dance Festival**

**Saturday 11 August 10.00am - 4.00pm**

The Gallery Downstairs

*Take a break from the Burnley Folk Song and Dance Festival and visit the craft demonstrations at the Gallery Downstairs.*

*Louise Robertson will be demonstrating her jewellery making techniques and the decoration of her 'Gormen Ghast' collection which is based on the trilogy of books by Mervyn Peake.*

*Enjoy watching Alison Dunkerly create papier mache vases, bowls and jewellery with original designs in bright and cheerful summery colours to inspire your own creations*

***.and in the workshop...***

*Try your hand at the traditional craft of spinning. Experiment at the wheel or with a dropped spindle, explore the technique of hand spinning under the expert guidance of spinner and teacher Jean Ellison.*



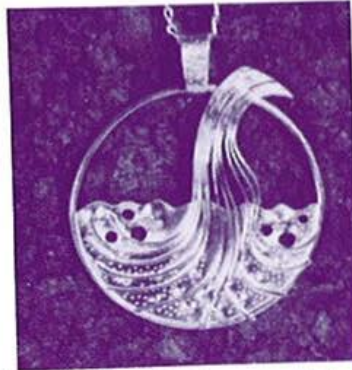
## Gallery Showcase

1 June - 26 June

### PIECES OF EIGHT

Gold and silver, moonstones and jaspers - forged into a glittering collection of jewellery and silverware by a group of eight jewellers and silversmiths. Although geographically distant from each other the group collaborate to mount exciting and wide ranging exhibitions. The broad spectrum of training leads to a wealth of styles and techniques which guarantees displays of great variety and wide appeal.

Fabulous jewellery in silver, gold and precious metal, some incorporating precious and semi-precious stones or delicate shells. Shapes and designs based on natural forms contrast with pieces reminiscent of ancient civilisations. Jewellers in the octet are: SUE HENNING, TESSA GARSIDE, PAULETTE BLISS, JULIA MANNING and JADWIGA BILLEWICZ, Work by Silversmiths: GEOFFREY CALLIS, ELIZABETH CLAY, and PHILIPPA MERRIMAN includes church, domestic and presentation silver featuring original designs produced using a variety of techniques.



30 June - 31 July

### TEXTILES FOR INTERIORS

Printed textiles are overflowing in our Gallery Showcase this month. A selection of individual designs to demonstrate the variety of materials for the home - from modern dwellings to period residences. Fabrics which are also delightful to look at with both subtle and startling contrasts of colour, bold or intricate designs.

Jan Farthing produces silk screen fabrics on cotton satin, luxuriously tactile and suitable for a host of uses. Osborne Rose Prints make many one off pieces featuring distinctive patterns frequently working to commission. Janet Milner produces printed textiles with illustrative and humorous designs featuring, Cowboys and Indians, sailors and caricatures.

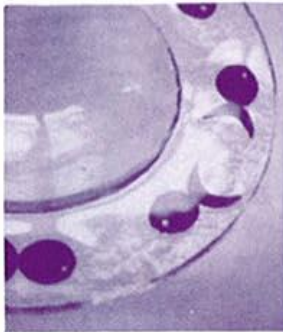
Diane Huxley combines watercolours and fabric to create small, framed pictures. Views of victorian bathrooms, modern hallways and vistas through windows and doors are created in a clear, simple style.





4 August - 3 September  
*SHINING LIGHTS*

DEANA MCDONAGH is a glass artist who uses traditional methods to produce individual pieces. Precious metal is blended between layers to produce unusual decorative effects on a range of large rimmed, translucent dishes. Designs are stunning: stylised leaves, squares and spots, sometimes a narrative pattern or encapsulated brass to leave mysterious shapes, like a frosted window.



GAYNOR RINGLAND's inspiration for decoration and design is derived from many sources; ideas are compiled into a series of images which are then interpreted from mono-prints directly onto the glass. Each piece is unique and the varying sizes and shapes of the glass objects give unlimited scope to the range. Large bowls feature sgraffito decoration techniques in bright colour combinations.



6 September - 3 October

*Lettering*

Calligraphy is a sadly neglected subject in many art departments and is more usually associated with the formation of beautiful letters on manuscript or lettering with a commercial application. The four artists whose work is featured in our gallery showcase have extended their art form to give a different perspective on the subject.

Only one artist combines paper with his words, but the paper is two dimensional in form with words to create a third. Work by Duncan Linklater and Ron Walker features inscriptions, quotations and lettering on wooden and ceramic plates and bowls. Ron also includes etched designs to decorate his bowls. Welsh slate is used by Sarah Moore to produce carved inscriptional plaques. Words of meaning enhance the object and provide decoration.

REMAINS THE RESIS DROSS CHAI

HALING OF BEREFF FROM THE CHAI



## Jewellery Showcase

21 April - 29 May

**JOAN DOHERTY**

The Herefordshire countryside provides inspiration for this unusual and delightful collection of jewellery and trinket boxes in porcelain. Delicate shapes of flowers and plants are individually modelled, fired, stained and finished in sterling silver.



**CAROLINE TAYLOR**

Intricate jewellery using precious and semi-precious stones, as well as web-like Nautilus shells from the Philippines feature in Caroline's polished and oxidised silver, influenced by a theme of water.



1 - 26 June

**ALISON EVANS**

An interest in medieval armour and fabrication have enabled Alison to specialise in different techniques of linkage and chainmail. Gold and titanium replace the steel and iron of old and by scaling down and refining original techniques Alison has developed quite large but intricate pieces with a skin-like tactility. Earrings and bracelets are comfortable to wear with a delicacy to enhance the fairest of damsels!



**JANE SUTTON**

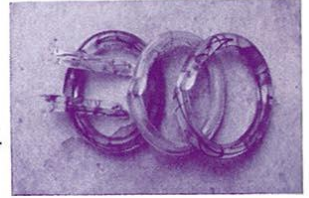
Egyptian and African art has influenced the bold paisley and spear shapes of Jane's earrings. Silver, copper and brass are layered to produce random or controlled patterns making each piece unique. An ancient feel is achieved by firing to cause premature tarnishing with blues, greens and deep copper hues.



30 June - 31 July

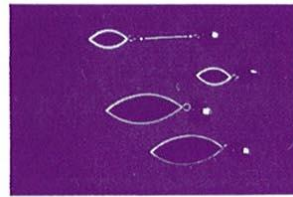
**MARLENE MCKIBBIN**

Surface patterns are a distinctive feature in two collections of earrings, bangles and pins. Delicately frosted knots and loops of acrylic wrapped with silver have a sophisticated feel. More recent work is richly coloured using a variety of materials such as embroidery threads and silk screen inks. Geometric designs, machining, faceting and polishing create some interesting optical illusions.



**BRIDGET WHEATLEY**

A stunning collection of jewellery in silver and specially prepared resin which is coloured with pigment to give a stone like finish. Bold outlines in silver, filled with rich centres of black, grey, blue or red resin stones give a flowing quality to this range of highly classical jewellery.



6 August - 3 September

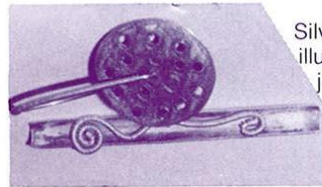
**LOUISE ROBERTSON**

Exciting jewellery based on characters from Mervyn Peake's 'Gormen Ghost'. Illustrations in silver feature the author's magical cast of personalities and incidents from this famous trilogy. Other pieces are in silver incorporating brass and copper, two dimensional designs featuring fine art perspective. A leather effect features on her unusually large amulets.



**JANE HOLMES**

Silver wrapped with enamelled wire introduces luminous colours to an intriguing collection of jewellery. Jane's interest in historical objects and Egyptian artefacts has influenced the shapes and etched designs. Earrings, brooches and pins with surface pattern on pieces tiny to chunky in size.



6 September - 3 October

**JENNY TURTILL**

Highly desirable earrings, large brooches, neckpieces and bracelets are made from a combination of materials including: silver, bronze, pieces of stone, blued steel and even bone! Natural and abstract forms are derived from nature, slightly domed shapes are etched, cast or forged to create a textured surface pattern in a collection accessible to all ages.



**WALLY GILBERT**

Bold shapes with open and delicate lace-like patterns in silver and bronze. Sculptural forms and unusual pieces based upon the collection of the Victoria & Albert Museum. Fine open work is created by casting and fabrication. Necklaces, studs and earrings with pierced or clip button fastenings for every occasion.



**BE SMART - SUPPORT THE ARTS**

**£££'S OFF TICKET PRICES**

**FREE ADVANCE MAILING · PRIORITY BOOKING**

**FREE LOANS OF EQUIPMENT · INVITATIONS**

**SPECIAL DISCOUNT · FREE MEMBERSHIP PACK**

*From Todmorden to Pendle, Bacup to Barnoldswick and Accrington to Oswaldtwistle Mid- Pennine Arts Association organises all these events and more at a variety of venues, large and small, throughout the area.*

*Becoming a member couldn't be simpler: Telephone **Burnley 21986** quoting your Access or Visa number or call in and see us at The Gallery Downstairs.*



# C A L L E N D A R

## May

- 29	Gardens Exhibitions	The Gallery Downstairs
Sat 5	Abdul Mahoumoad Nishtar	Unity Hall, Nelson
Mon 7	The Samande Jugglers	Towneley Park, Burnley
Mon 7	Circus Sensible	Helmshore Textile Museum
Sat 19	Demonstration by Burnley Flower Club	The Gallery Downstairs
Sat 26	Snapshot 'The Jellyvision Show'	Civic Hall, Whitworth
Sat 26	Red Herrings and Snapshot	Centre Vale Park, Todmorden
Sun 27	Northern Baroque Orchestra	Civic Hall, Whitworth

## June

Sat 1 - 26	Hogarth. Collection of Puppets	The Gallery Downstairs
Sat 2	Snapshot with 'The Jellyvision Show'	am. Town Hall, Accrington
		pm. Mercer Hall, Great Harwood
Sat 2	Mimika Theatre Company	am. St. Peter & Paul's School, Rishton
		pm. Town Hall, Accrington
Sat 2	The Missing Brazilians & Inner Sense Percussion	Town Hall, Accrington
Sun 3	Asian Folk Music with Lohar Group	Town Hall, Accrington
Wed 6	London Opera Players 'Madam Butterfly'	Civic Theatre, Oswaldtwistle
Thur 7	Northern Dance Company	Civic Theatre, Oswaldtwistle
Fri 8	Alternative Cabaret with Henri Normal	New Era Youth Centre, Accrington
Sat 9	The Samande Jugglers - Freehand Theatre Puppet Show	am. Civic Hall, Clayton-le-Moors
		pm. Town Hall, Accrington
Sat 9	Expanding Suitcase	Sports Centre, Haslingden
Sat 9	Holle Holle Bhangra Band	Town Hall, Accrington
Sat 9 & 10	Bozo & Zizi The Clowns	Sports Centre, Haslingden
Sun 10	Face Pack	Sports Centre, Haslingden
Sun 10	Moon de Lune	Sports Centre, Haslingden
Thur 21	The Grinnigogs	Town Centre, Bacup
Fri 22	Snapshot	Town Centre, Bacup
Sat 23	The Peace Artistes	Streets of Bacup
Sat 23	Accrington & District Bonsai Society Show	Town Hall, Accrington
Sun 24	Kavi Puppets and Plays	Vale Community Centre, Cornholme
Sat 30	Raza and Party Bhangra Dance	Unity Hall, Nelson
30-31 July	'Face To Face' exhibition featuring heads in art, work by Alan Jenkins and Gary Waters	The Gallery Downstairs

## July

Sat 21	Poetry readings by Jamiat-E-Hussain	Unity Hall, Nelson
Sun 22	The Chipolatas	Victoria Park, Nelson
Sun 29	Jukalo the Juggler	Sough Park, Earby
Mon 30-3 Aug	Jazz Workshop Week	Habergham 6th Form Centre

## August

Fri 3	Jazz College Concert	Burnley Mechanics
Sat 4	Avanti Display 'The Fountain Machine'	Centre Vale Park, Todmorden
Sat 4-5	Contemporary Jazz Workshop	Habergham 6th Form Centre
Sun 5	The Jellyvision show and Punch & Judy	Barrowford Park
Aug 6-Sep 3	Bright Lights, Crafts Exhibition	The Gallery Downstairs
Thur 9	Excursion	Lady Lever Art Gallery
Sat 11	Quaranic Recital Qari Nazar Hussain	Unity Hall, Nelson
Sat 11	Craft Demonstrations	The Gallery Downstairs
Sun 12	The Jellyvision Show and Punch & Judy	Letcliffe Park, Barnoldswick
Sun 19	Jukalo The Juggler	Ballgrove Picnic Park, Trawden
23-29	Asian Crafts Exhibition	Civic Hall, Nelson
Sat 25	Mimika 'Sideshow'	St Peters School, Walsden, Todmorden
Mon 27	Mimika 'Sideshow'	Weavers Triangle Visitor Centre, Burnley
Thur 30	Gilbert & Sullivan 'Trial by Jury From Scratch'	Municipal Hall, Colne

## September

6 Sept-3 Oct	Contemporary Poets	The Gallery Downstairs
Sat 8	Avanti Display 'The Fountain Machine'	Streets of Haslingden
Sat 8	Moon de Lune	Streets of Haslingden



# MID - PENNINE ARTS ASSOCIATION

## OUT OF DOORS IN THE PARKS OF PENDLE

Enjoy a variety of entertainment in the parks of Pendle this summer. Mid-Pennine Arts Association has organized some splendid street theatre performances to coincide with a series of brass band concerts organised by Pendle Leisure Department. Artists will perform for an hour between 2.00 and 3.00pm before the bands strike up.

### THE CHIPOLATAS

Sunday 22 July  
Victoria Park, Nelson

Street Theatre at its best from Sam Thomas who used to be a member of the Fabulous Salami Brothers - now he's a sausage in his own right! Since the age of nine Sam has been performing as a unicyclist and illusionist. His show features many amazing skills with jokes and tricks plus music from his accordion playing friend.

### Jukalo the Juggler

Sunday 29 July  
Sough Park, Earby  
Sunday 19 August  
Ballgrove Picnic Park, Trawden

The most scariying juggling in the country. Watch Jukalo balance high above the crowds on his custom built hat stand. Be amazed at the whizzing wine bottles and spinning balls. Giggle at the 'statue mimes' jesting and joking. Jukalo is an extraordinary juggler not to be missed. Oh...and by the way... he might just be looking for a few assistants.



### Snapshot

#### THE JELLYVISION SHOW & PUNCH AND JUDY

Sunday 5 August  
Barrowford Park  
Sunday 12 August  
Letcliffe Park, Barnoldswick

Come and join Mr Jellyspoon and Crishendo for lots of fun. The Jellyvision Show is packed with music, magic and lashings of tomtoolery - PLUS a special Punch and Judy show.



## EVENTS IN TODMORDEN

### RED HERRINGS & SNAPSHOT

Saturday 26 May - from 2.00pm  
Centre Vale Park, Todmorden

Music of all styles from Red Herring who boast: trumpets, trombones, saxophones, accordion and, of course, a big base drum. Snapshot provide the clowning, unicycling and Britain's tallest lady stilt walker - just right for the carnival.

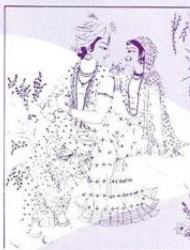
Presented in association with Todmorden Carnival Committee.

### Kavi Puppets & Plays

Sunday 24 June 7.30pm  
Vale Community Centre, Cornholme, Todmorden  
Admission £2.50 Concession £1.50

Kavi Puppets & Plays are one of the leading puppet troupes in India. Their shadow puppetry is based on Bharata Natyam dance and this is studied before learning manipulation of the puppets. In the first half of the performance the Company will perform this pure dance form, which is based around the complicated rhythms of classical Indian music. The second half of the performance features forty five, brightly coloured, shadow puppets. The Krishnaleela is the story of Krishna, the eighth incarnation of the god Vishnu, the most endearing of characters in Indian Mythology. His many adventures are narrated in English with original Gujarati folk music.

### The Krishnaleela



### Puppet and Dance Workshops

Sunday 24 June 2.00pm - 3.30pm  
Vale Community Centre, Cornholme, Todmorden  
Admission £1.00 Concession 50p

An opportunity to develop puppetry skills and learn some of the stylised hand movements and facial expressions of the dance. The two workshops will run concurrently, there are just 25 places on each.

A joint promotion with Cornholme Festival Committee

### 'THE FOUNTAIN MACHINE' By

Saturday 4 August 12.00 - 6.00pm  
Todmorden Greenpeace Day  
On The Green  
Centre Vale Park, Todmorden



Don't miss the amazing Fountain Machine, a mobile ornamental gusher operated by the (oilskin clad) Avanti Display. Enjoy the wit and charm of this work of art on wheels. Marvel at the jets and spurts with spectacular climatic spouts. (Umbrellas will be available for the timorous spectators.) Presented in association with Todmorden Greenpeace.

### 'SIDESHOW'

Saturday 25 August 1.30-5.00pm  
Walsden Carnival  
St. Peters School, Walsden, Todmorden.

Another unique outdoor show performed from a theatre built upon a motorbike and sidecar! You'll be amused and amazed with puppetry, magic, fire eating and breath-taking stunts.

## WHITWORTH FESTIVAL

### NORTHERN BAROQUE ORCHESTRA

Sunday 27 May 7.30pm  
Civic Hall, Whitworth  
Admission £2.00 Concession £1.50

"A Musical Evening With The Bach Family"

The Bach family were musically active for generations. Records remaining reveal that 53 of the family occupied positions as organists and town musicians. The Orchestra will perform a selection of their works on this musical journey, with a narrative by Bob Chasey. Highlight of the evening will be J.S. Bach's Third Brandenburg Concerto for Oboe D'Amore, with Gillian Woodroe as soloist.

### SNAPSHOT "The Jellyvision Show"

Saturday 26 May 10.30am  
Civic Hall, Whitworth  
Admission 50p

Join Mr Jellyspoon and Crishendo for lots of fun, music, magic and lashings of tomtoolery.

Joint promotions with Whitworth Town Council

## Trial by Jury

- from Scratch

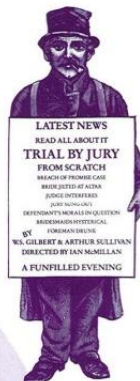
Thursday 30 August 7.30pm  
Municipal Hall, Colne  
Admission £3.50 Concession £2.50  
including programme.

Here's a chance to participate in one of Gilbert and Sullivan's wittiest and most tuneful of operettas. Have fun and join the energetic (and so we're told 'witty') musical director, Ian McMillan, who will spend the first part of the evening teaching the audience the music. The second half consists of a fully costumed performance of the work, with professional singers in the major roles and the audience as The 'Jury' and 'Bridesmaids'.

A programme containing all the necessary music is given to each member of the audience on the night, and if really necessary Ian is prepared to let the audience use the music during the performance! A thoroughly good time is promised to all.

A joint promotion with Pendle Borough Council.

GILBERT  
&  
SULLIVAN



## 1990 Mainstream JAZZ Workshop Week

Monday July 30 - Friday  
August 3  
10.00am - 5.00pm daily

Habergham 6th Form Centre,  
Kiddrow Lane, Burnley  
Registration fee £40.00  
Concession £30.00

A workshop designed for all those with a reasonable ability on their chosen instruments who wish to improve their jazz playing skills. The workshop will concentrate on improvisation, section and group playing with course leaders: Stan Barker (keyboards) and Digby Fairweather (brass) the Musical Directors of Jazz College; plus Al Wood (reeds), Gary Boyle (guitar), Paul Mitchell-Davidson (bass), and Dave Hassell (percussion) who are all experienced jazz musicians and teachers.



## 1990 Contemporary JAZZ WorkshopWeekend

Saturday & Sunday August 4 & 5

Habergham 6th Form Centre & Burnley Mechanics  
Registration Fee £20.00 Concession £12.00

An opportunity to study post-bop techniques with particular reference to modal playing, latin and rock idioms incorporated in two large scale works commissioned for the weekend from Stan Barker and Paul Mitchell-Davidson.

Cost of both Mainstream Jazz Workshop and Contemporary Jazz Workshop is £50.00 concession £35.00. Registrations can be made before 16 June with a deposit of £10.00 concession £6.00.

Registration forms are available from M.P.A.A. and Burnley Mechanics.

## Jazz College Concert

Friday 3 August 8.00pm  
Burnley Mechanics  
Admission £3.50 Concession £2.50

A treat at the end of Jazz Workshop Week, free to participants on both workshops and also open to the public. Course Tutors Stan Barker, Digby Fairweather, Al wood, Gary Boyle, Paul Mitchell-Davidson and Dave Hassell join forces to show us just how it's done.

Presented in association with Burnley Mechanics and Lancashire County Council with financial assistance from The Musicians' Union and North West Arts.

## EVENTS IN BURNLEY

### The Samandé Jugglers

Monday 7 May 1-5.30pm  
Burnley May Day  
Towneley Park, Burnley

Fast moving juggling and action-packed unicycling with an abundance of visual and verbal humour. Used in the show are two giant unicycles, a seven foot ladder and numerous juggling objects, including the desperately dangerous flaming torches. Sam Scurfield, winner of the British Busking Championships and founder member of the Saroste Jugglers, joins forces with Andy Beattie of Edinburgh Festival fame for this spectacular show.

Presented in association with Burnley May Day Committee.

### MIMIKA 'SIDESHOW'

Monday 27 August 12.30-4.00pm,  
St. Monday Festival  
Weavers Triangle Visitor Centre, Burnley

Roll up for a unique outdoor show performed from a theatre built upon a motorbike and sidecar! You'll be amused and amazed with puppetry, magic, fire eating and breath-taking stunts.

Presented in association with Friends of Weavers Triangle.





## Asian Events in the Unity Hall, Vernon Street, Nelson

### EID MILAN CELEBRATION

Saturday 5 May 7.30pm

By invitation only, enquiries to Pakistan Welfare Association.

The scholar ABDUL MAHOUMAD NISHTAR will give a talk on aspects of Ramadan to celebrate the end of the Holy month.

### NAART

POETRY READINGS BY JAMIAT-E-HASSAN

Saturday 21 July 7.30pm

Admission £1.50

The Naart is an evening of poetry recital or vocalisation. The presentation of the poetry is as much an art form as the content of the poems.

### RECITAL NIGHT OF QUARANIC VERSES WITH QARI NAZAR HUSSAIN

Saturday 11 August 7.30pm

Unity Hall, Nelson Admission £1.50

Quarat is the recitation or chanting of Quaranic verses. The training necessary for this is far longer and more demanding than that for western opera singers. The art form is an integral part of Pakistani culture.

Joint promotions with the Pakistan Welfare Association (Nelson)

### Bhangra Dance

### RAZA AND PARTY

with Guest Comedian

Saturday 30 June 7.30pm

Admission £2.50 Concession £1.50

'RAZA' are five musicians from Rochdale who specialise in the new Bhangra sound.

Recordings and TV appearances have given the group a far reaching reputation with performances throughout the United Kingdom. They'll be joined by a guest comedian for a superb evening of music and dance.

## HYNDBURN FESTIVAL 1990

MID-PENNINE ARTS ASSOCIATION ARE PROMOTING A NUMBER OF EVENTS IN ASSOCIATION WITH HYNDBURN FESTIVAL. FOR A TERRIFIC WEEK OF FUN WITH MUSIC, STREET THEATRE, DANCE AND PARTIES, READ ON.....

### London Opera Players

### "MADAM BUTTERFLY"

Wednesday 6 June 7.30pm

Civic Theatre, Oswaldtwistle

Admission £5.00 Concession £4.00.

The London Opera Players have introduced professional opera to thousands of people throughout the British Isles. Their productions are excellent, beautifully arranged and sung in English.

Madam Butterfly is the tragic tale of a young Geisha Girl, Cho-Cho-San (Butterfly) who falls madly in love with the American, Pinkerton. Their story unfolds with inspiring melodies and memorable songs like 'One Fine Day' to make this one of Puccini's favourite operas.

Produced by Douglas Craig, the Company have won wide critical acclaim for this stylish production. Members of the cast include: Jennifer Lilleystone, James Anderson, Alison Mary Sutton, Robert Bateman, Robin Green and Anthony Scales.



### SNAPSHOT "THE JELLYVISION SHOW"

Saturday 2nd June

11.00am, Town Hall, Accrington.

3.00pm Mercer Hall Leisure Centre

Great Harwood

All tickets £1.00



Join Mr Jellyspoon and Crishendo for lots of fun with music, magic and lashings of tomfoolery - don't expect to just stand and watch, Mr. Jellyspoon might need a helping hand.

### MIMIKA

Saturday 2 June

10.30am St.Peter & Pauls School, Rishton

3.00 pm Town Hall, Accrington

All tickets £1.00



A non-verbal extravaganza with mime, music, puppetry, magic and visual effects. Watch 'THE TRUNK' become a puppet booth, or perhaps a car, you never can tell just what it will change to next! This is a show especially suitable for young children.

### Northern Dance Company presents

### NEW FOR 90

Thursday 7 June 7.30pm,

Civic Theatre, Oswaldtwistle

Admission £3.00

Concession £2.00

...they explore new kinds of choreography, often athletic and unusual...they exude determination and commitment." (Yorkshire Post 1989)

Visually exciting contemporary dance from the Northern Dance Company, who were formed in 1988 from the Leeds School of Contemporary Dance. The Company present a dynamic programme of challenging new works which incorporate a variety of styles and techniques.

New pieces to be seen during the evening will include: 'Orienteering' by Russell Trigg and 'Monitor in Motion' by Darshan Singh Bhuller of London Contemporary Dance Theatre.



### Dance Workshop

Thursday 7 June 11am-12.30pm

Civic Theatre, Oswaldtwistle

Admission £3.00 Concession £2.00 (Includes admission to the performance.)

A workshop for the over 14's with some dance movement experience. An opportunity to learn from the professionals of the Northern Dance Theatre. Floor exercises, centre exercises and travelling sequences will be tackled during the session which is limited to 25 places.

### freehand theatre

### Finding Time

Saturday 9 June

10.30am Town Hall, Accrington

3.00pm Lounge, Civic Theatre, Oswaldtwistle

All tickets £1.00

'Finding Time' is an original story told by the puppeteer actors of Freehand Theatre. Who is it that organises the seconds and minutes anyway, and why can't Ben's mum find the time to take him to the carnival...? Enjoy sixty minutes with Ben, Tick and Tock as they find out what happens to all the time we waste. This entertaining show is especially suitable for young children.



### Lohar Group in a Concert of

### Asian Folk Music

Sunday 3 June 7.30pm

Town Hall, Accrington

Admission £2.50 Concession £1.50.

Folk music and song from Pakistan with Tariq Lohar and his group. As the son of Alum Lohar, the famous folk singer, Tariq has inherited a fine voice and a vast collection of traditional songs from the Punjabi region. He has made many TV and radio appearances in Britain and abroad.



### "DISCO"

Saturday 2 June

1.45pm, Broadway Area, Accrington.

Inner sense PERCUSSION ORCHESTRA

The Missing Brazilians

Saturday 2 June 8.00pm.

Town Hall, Accrington

Admission £4.00 Concession £3.00

All the best dancing sounds around - and more! Radio Lancashire's World Music Disc Jockies Steve and Janet Barker join forces with INNER SENSE PERCUSSION for a sensational evening of music to get you bopping.

### "Bataconda"

Saturday 2 June

1.45pm, Broadway Area, Accrington.

Dance or tap your toes to this gigantically rhythmic percussion based band. Brazilian Samba, West African Drumming and an assortment of jazz styles were described as 'the best outside Rio' by Band On The Wall.

inner sense PERCUSSION ORCHESTRA

### "DISCO"

Saturday 2 June

1.45pm, Broadway Area, Accrington.

Inner sense PERCUSSION ORCHESTRA

The Missing Brazilians

Saturday 2 June 8.00pm.

Town Hall, Accrington

Admission £4.00 Concession £3.00

All the best dancing sounds around - and more! Radio Lancashire's World Music Disc Jockies Steve and Janet Barker join forces with INNER SENSE PERCUSSION for a sensational evening of music to get you bopping.

## aLTERNATIVE cABARET

With HENRI NORMAL, CLAIRE MOONEY, SUITCASE CIRCUS AND RICHARD MASON.

Friday 8 June 8.00pm

New Era Youth Centre, Accrington.

Admission £3.00 Concession £2.00

An evening of comedy, song and poetry from the Bard of Crumpsall HENRI NORMAL with singer/songwriter CLAIRE MOONEY who's highly regarded as Britain's answer to Chapman/Vega etc, and SUITCASE CIRCUS otherwise known as Pete Lawless White the juggler, fire eater and magician extraordinaire!! The show is hosted by Richard Mason of Leeds Alternative Cabaret. It is the first time the four artists have teamed up again since their sell out shows at last years Ilkley Festival.

Presented in association with New Era Youth Centre.

### The Samandé Jugglers

Saturday 9 June

10.30am Civic Hall, Clayton - le - Moors

3.00pm Town Hall, Accrington

All tickets £1.00

Fast moving juggling and action-packed unicycling with an abundance of visual and verbal humour. Used in the show are two giant unicycles, a seven foot ladder and numerous juggling objects - including the desperately dangerous flaming torches.

### Bhangra Night With HOLLE HOLLE

Saturday 9 June 8.00pm

Town Hall, Accrington

In advance £4.00 Concession £3.00

On the door £5.00.

This top London band play both the traditional and new styles of Bhangra and have performed in Portugal, America and Canada. Instruments include: Bholak, clarinet, organ, synthesiser, guitars, saxophone and two vocalists.



**AND IN ROSSENDALE....** LOTS OF EVENTS IN THE TOWN AND ON THE

## ROSSENDALE COUNTRY FAIR

'EXPANDING SUITCASE

'THE FLIM FLAM  
MEN'

**Saturday 9 June 11.00am - 4.30pm**

Sports Centre, Haslingden.

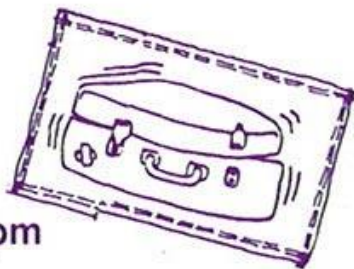
A fast moving variety show with Tony Webber and Ben Cornish, between them they share a wealth of skills. Dangerous feats, acrobatics, fire eating and escapology are just a few of their talents - you'll have to come along to find out more.

the **FACE PACK**

**Sunday 10 June 11.00-4.30pm**

Sports Centre, Haslingden.

Superior face painting to transform you into a tiger or a werewolf, or perhaps you would rather become spiderman or a tropical island....whatever you choose you won't want to wash your face for weeks!



**BOZO AND ZIZI**

**THE CLOWNS**

**Saturday 9 and**

**Sunday 10 June**

**11.00am - 4.30pm**

Sports Centre, Haslingden.

What a pair! You just can't take them anywhere without them fooling around... but perhaps you like slapstick, escapology, juggling and fire-eating with a large dash of tomfoolery?

**MOON DE LUNE**

**Sunday 10 June 11.00-4.30pm**

Sports Centre, Haslingden.

Rock and Roll from the Moon de Lune roving minstrels. Enjoy the crazy costumes and super sounds of the saxophone, melodeon, banjo, piccolo and ukelele.

*Joint promotions with the Rossendale Country Fair.*



## STREETS FOR CARNIVALS, FAIRS AND SPECIAL DAYS.

### Irwell Valley Adventure Day

#### CIRCUS SENSIBLE

Monday 7 May 11.00 - 5.00pm

Helmshore Textile Museum, Haslingden.

Not quite like the traditional circus but we've got the Brothers Sensible, with sensationally sensible juggling. Also attempted: the riding of the single wheeled cycle, the producing of hats out of rabbits and other such feats of jiggery pokery. There's lots of innovation, a dash of music and total incompetence.

### Bacup Summer Solstice

#### The Grinnigogs

Thursday 21 June 5.00—8.00pm

Town Centre, Bacup

Street entertainment to astound, confound, amuse and delight. The Grinnigogs present an amazing assortment of skills including: fire eating, medieval music, magic and stilt walking with plenty of jovial jesting.

*A joint promotion with Rossendale Borough Council.*

### BACUP CARNIVAL

#### SNAPSHOT CLOWNS WITH PUNCH AND JUDY

Friday 22 June 5.00—8.00pm

Bacup Carnival Kiddies Corner  
Town Centre, Bacup

Plenty of clowning around with music, games and tricks from Snapshot plus a super Punch and Judy show with a crocodile, the sausages and of course baby.

#### THE PEACE ARTISTES

Saturday 23 June  
Bacup Carnival  
Streets of Bacup

From the lively rhythms of Latin America to the jigs and reels of Ireland, energetic music and song from around the world by one of the country's foremost street bands. The Peace Artistes are a group of sixteen musicians who play a variety of wind and percussion instruments, they were formed in 1983 in support of the peace movement.



### HASLINGDEN STREET FAIR

#### AVANTI DISPLAY

#### 'THE FOUNTAIN MACHINE'

Saturday 8 September, 11.00-4.00pm

Streets of Haslingden

Don't miss the amazing Fountain Machine, a mobile ornamental gusher operated by the (oilskin clad) Avanti Display. Enjoy the wit and charm of this work of art on wheels. Marvel at the jets and spurts with spectacular climatic spouts. (Umbrellas will be available for the timorous spectators.)

#### MOON DE LUNE

Saturday 8 September, 11.00-4.00pm

Streets of Haslingden

Sensational rock and roll from the roving minstrels.

*Joint promotions with Rossendale Borough Council.*

The information in this brochure is correct at the time of going to press but MPAA reserves the right to cancel or amend the programme due to unforeseen circumstances.

*Design and Print by HARTLEY & HARTLEY LTD.(0282) 861614*



# The GALLERY Downstairs

Yorke Street · Burnley · Tel · (0282) 21986

## OPENING HOURS

Monday to Friday 10am to 6pm  
Saturday 10am to 4pm Sunday 2pm to 4pm

ADMISSION FREE



## HOW TO BOOK

TICKETS for performances, excursions and workshops can be booked in advance

- telephone (0282) 21986.

CALL IN at the Gallery Downstairs and pay by cash, cheque, Access or Visa.



POSTAL BOOKINGS to The Gallery Downstairs,

Yorke St., Burnley, Lancs BB11 1HD. Please make cheques payable to MPAA and enclose SAE.

**CONCESSIONS** are offered to those in full time education, the unemployed, senior citizens, registered disabled people and also members of Bury Metro Arts. National Jazz Card holders receive discounts at Jazz Events.

**PARTY RATES** A discount of 10% is offered to groups of 10 or more, and party leaders get in free.

**MEMBERS** A Star means Members are entitled to £1 off this event. See our Membership Leaflet for details of the many others benefits offered to members; including Advance Information, Priority Booking, Gallery Previews, Free Equipment Loans and Discounts at local shops and theatres. To find out more, call us on (0282) 21986.



## AGENTS

<b>ACCRINGTON</b>	Althams Travel Services, 26 Blackburn Road Hydburn Leisure, Gothic House, St James Street
<b>BACUP</b>	Public Library, St James Square First Steps (Business Consultants), Fiscal House, 27 St James Street
<b>BLACKBURN</b>	Althams Travel Services, 12 Ainsworth Street
<b>BURNLEY</b>	Showstoppers, 29B Standish Street
<b>BURY</b>	Bury Metro Arts, Derby Hall, Market Street
<b>CLITHEROE</b>	Althams Travel Services, 20 King Street Tourist Information Centre, Church Walk
<b>COLNE</b>	Althams Travel Services, 13 Albert Road Pendle Technical & Leisure Services, Bank House, 61 Albert Road
<b>HASLINGDEN</b>	Public Library, Deardengate
<b>NELSON</b>	Althams Travel Services, 1 Scotland Road Tourist Information Centre, 20 Scotland Road
<b>RAWTENSTALL</b>	Ellen Smiths (Tours) Ltd., 4 Bury New Road Central Library, Queens Square Tourist Information Centre, 41-45 Kay Street Rossendale Music Centre, 32 Bank Street
<b>TODMORDEN</b>	Althams Travel Services, 15 Halifax Road Bears Wholefoods, 29 Rochdale Road

Mid Pennine Arts Association gratefully acknowledges the financial assistance of the Borough Councils of Burnley, Hydburn, Pendle and Rossendale, the town Council of Todmorden, North West Arts, Yorkshire Arts and Lancashire County Council.

