

MID-PENNINE ARTS

NOV / JAN

1991 - 1992



LIP SERVICE

HOW TO BOOK

TICKETS FOR PERFORMANCES, EXCURSIONS AND WORKSHOPS

IN PERSON: Call in at the Gallery Downstairs, Yorke Street, Burnley.

OPENING HOURS

Monday – Saturday 10am to 5pm
except Thursday 1pm to 5pm

BY TELEPHONE: By ringing **(0282) 21986/29513**

CREDIT CARD BOOKINGS: Be sure of your tickets. You can book by credit card by either calling in or by telephone. All Access, Eurocard, Mastercard and Visa cards are accepted.

BY POST: Please enclose an S.A.E. and send bookings to:

MID-PENNINE ARTS,
THE GALLERY DOWNSTAIRS,
Yorke Street, Burnley BB11 1HD
Please make cheques payable to MPAA

CONCESSIONS: Concessionary rates are offered to those in full-time education, unemployed people, senior citizens, registered disabled people and also members of Bury Metropolitan.

GROUP REDUCTIONS: If you buy ten tickets you will receive one extra ABSOLUTELY FREE.

SAVE MONEY - BECOME A MEMBER NOW! Other benefits include Advance Information, Priority Bookings, Gallery Previews, Free Equipment Loans, and discounts at other arts venues and local shops. A star ★ in this leaflet means Members are entitled to £1 off this event.

SO RING US ON **(0282) 21986** NOW AND FIND OUT MORE

BUY YOUR TICKETS LOCALLY

Mid-Pennine Arts tickets are available from:

ACCINGTON	ALTHAMS TRAVEL SERVICES, 26 Blackburn Road HYNDBURN LEISURE, Gothic House, St James Street
BACUP	PUBLIC LIBRARY, St James Square FIRST STEPS (Business Consultants), Fiscal House, 27 St James Street
BARNOLDSWICK	TOURIST INFORMATION, Fernlea Avenue
BLACKBURN	ALTHAMS TRAVEL SERVICES, 12 Ainsworth Street
BURY	BURY METROPOLITAN, Derby Hall, Market Street
CLITHEROE	ALTHAMS TRAVEL SERVICES, 20 King Street TOURIST INFORMATION CENTRE, Church Walk
COLNE	ALTHAMS TRAVEL SERVICES, 13 Albert Road PENDLE LEISURE SERVICES, Bank House, 61 Albert Road
HASLINGDEN	PUBLIC LIBRARY, Deardengate
NELSON	ALTHAMS TRAVEL SERVICES, 1 Scotland Road TOURIST INFORMATION CENTRE, 20 Scotland Road
RAWTENSTALL	CENTRAL LIBRARY, Queens Square TOURIST INFORMATION CENTRE, 41-45 Kay St.
TODMORDEN	ALTHAMS TRAVEL SERVICES, 15 Halifax Road BEARS WHOLEFOODS, 29 Rochdale Road

POETRY READING

ADRIAN HENRI ★

HAWORTH ART GALLERY, ACCRINGTON

MONDAY 4 NOVEMBER 8pm
TICKETS £4.00 CONCESSIONS £2.50

Adrian Henri - poet, painter and performer - is fervent in his love of his home town, Liverpool. Whether or not you remember LILY THE PINK, THE LIVERPOOL SCENE and THE SCAFFOLD, you will enjoy this evening in his company at the Haworth Art Gallery.

This reading is supported by North West Arts and presented in Association with Pennine Ink.



MANCHESTER CAMERATA

MUNICIPAL HALL, COLNE

THURSDAY 7 NOVEMBER AND 12 DECEMBER

PRE-CONCERT TALKS 6.45pm, CONCERTS 7.30pm

LEISURE

In Pendle

PER CONCERT: BALCONY £6.00/£5.00 STALLS £5.00/£4.00
SEASON: BALCONY £20.00/£16.00 STALLS £16.00/£12.00

For the sixth year of our Colne Orchestral Series, we are pleased to join with Leisure in Pendle to welcome back the North's leading chamber orchestra, Manchester Camerata.

The first concert, on 7th November, includes Mozart's Bassoon Concerto and Dvorak's Serenade for Strings.

The second, on 12th December, will focus on English composers, and include Britten's Simple Symphony and Warlock's Capriol Suite.

We are delighted to introduce a series of pre-concert talks by leading members of the Camerata, to explain some of the background and help you enjoy the experience even more!

Supported by the Musicians Union



GUIDED IMAGERY

HORSE & BAMBOO

11 - 15 NOVEMBER

Horse & Bamboo will work with not for the five groups with learning difficulties who will visit their base in Rawtenstall this week. As they are going on a journey the participants are asked to bring a small travelling bag, a torch, something to eat, coins, paper, and "something precious".

Horse & Bamboo pioneered active, participative theatre which aims to stimulate imagination and improve communication and problem solving skills.

Made possible by the Stocks Massey Bequest and CRS

GUITAR RECITAL

YORK GUITAR QUARTET ★

HAWORTH ART GALLERY, ACCRINGTON

WEDNESDAY 13 NOVEMBER 8pm
TICKETS £4.00 CONCESSIONS £2.50

The York Guitar Quartet promises a blend of baroque and classical music, alongside the best the 20th century can offer. They have a unique mixture of instruments allowing the group access to music normally unavailable to solo guitarists or other ensembles.



THEATRE IN BURNLEY

AL MASRAH present ANSAR ★

BURNLEY YOUTH THEATRE, QUEEN'S PARK ROAD

THURSDAY 14 NOVEMBER 7.30pm
TICKETS £4.00 CONCESSIONS £2.50

Zahran and Kifah are two Palestinians detained without charges in Ansar 3, a detention camp in the suffocating heat of the Negev desert. They are in constant conflict with their jailer, with nature, and with themselves in their attempts to resist despair.

Based on the experience of one actor, ANSAR combines movement and dialogue in constant tension. This stark, evocative production is one of the creative products of AL MASRAH, a Palestinian theatre centre closed by the Israeli Military Order 16 times in the last six years. The play is followed by a discussion.

Supported by North West Arts Board.



WOMEN'S THEATRE

RED LADDER THEATRE CO present CONSEQUENCES

GREAT HARWOOD YOUTH AND COMMUNITY CENTRE

SUNDAY 17 NOVEMBER 3pm
GIRLS AND WOMEN ONLY TICKETS £1

Asha and Amina are best friends. They tell each other everything. Why then do they confide in secret diaries? Consequences looks at the hopes and fears which are too hard to tell even to your best friend.

Red Ladder present a play based on material from a group of Bangladeshi girls, to which only women and girls will be admitted. The dialogue is mainly in English, but sometimes in Bengali and Punjabi.

EXCURSION

AMADEUS

WEDNESDAY 20 NOVEMBER

TICKETS £12.50

(includes transport and theatre ticket)

Come with us to Bradford's beautiful Alhambra to see Compass Theatre Co. in Peter Shaffer's AMADEUS, starring Tim Pigott-Smith and Toyah Wilcox. Wolfgang Amadeus Mozart is invited to play for the king, his genius is immediately recognised by mediocre court composer, Salieri, and driven by envy, he plots the downfall of the young master...

We will collect in Rawtenstall, Accrington, Burnley, Nelson and Colne, so book with MPA by 8th November.



THEATRE IN CORNHOLME

HORSE & BAMBOO present THE WISH ★

VALE COMMUNITY CENTRE, CORNHOLME

THURSDAY 21 NOVEMBER 7.30pm
TICKETS £4.00 CONCESSIONS £2.50

Horse & Bamboo use powerful imagery, puppetry and masks combined with live music to tell a tale of comic and tragic dimensions. The Wish is the story of a small village suddenly under threat from an outsider seen through the eyes of a young woman, who longs for a child. She makes a wish at the village well, and unleashes new and frightening forces which threaten the way of life of the whole village.

This entertaining, amusing and exciting story forms the heart of a beautiful and fascinating show.

Supported by Yorkshire and Humberside Arts.



I N M E N T

THEATRE IN OSWALDTWISTLE

SNAP PEOPLE'S THEATRE TRUST present
A TALE OF TWO CITIES



OSWALDTWISTLE CIVIC THEATRE
THURSDAY 28 NOVEMBER 7.30pm
TICKETS £4.00 CONCESSIONS £2.50

"It was the best of times - it was the worst of times..."

This stunning tale of resurrection, renunciation and revolution based on one of Dickens' best and most popular novels is brought to the stage by one of the country's most innovative and dynamic companies.

Dickens' tragic love story, set against a background of intrigue and danger, tells the story of two young lovers whose past lives threaten their future together.

Supported by North West Arts Board.

FAMILY THEATRE

OPEN HAND THEATRE COMPANY present
FANTASTIC MR FOX by ROALD DAHL

BACUP LEISURE HALL: 3 - 4 DECEMBER 1.30pm and 7pm
PUBLIC HALL, HASLINGDEN: 6 DECEMBER 1.30pm and 7pm; 7 DECEMBER 7pm
TICKETS £3.50 CONCESSIONS £2.00

Pre-booked groups of 10 or more get 10% discount. Contact No. 0706 226590

Brought to life by the highly acclaimed Open Hand Theatre Co, Roald Dahl's story comes alive as the foxes try to outwit those three frumious farmers. Loaded with puppets, masks and humour, this performance will delight all who see it.

Presented by Rossendale Borough Council in association with Mid-Pennine Arts.



COMEDY IN TODMORDEN

LIP SERVICE present
KNIT ONE MURDER ONE



CALDER COLLEGE, TODMORDEN
THURSDAY 5 DECEMBER 8pm
TICKETS £4.00 CONCESSIONS £2.50

Lip Service return with their usual hilarity and quick-fire humour. Comedy duo Maggie Fox and Sue Ryding play all the different characters, needing many quick costume changes.

The tranquillity of a charming English village is shattered by the discovery of a body in the potting shed. Enter Miss Gibbings - on the surface a gossiping old busybody but harbouring remarkable powers of detection which astound even the local constabulary...

Supported by Yorkshire and Humberside Arts.

BHANGRA

O. T. NETWORK

VENUE TO BE CONFIRMED - RING (0282) 21986 FOR DETAILS.

SATURDAY 7 DECEMBER
6 - 7.30pm WOMEN ONLY
8 - 10pm MIXED AUDIENCE

TICKETS £4.00 CONCESSIONS £2.50 (for one or both sessions)

Hot from G-Mex come one of Manchester's more exciting exports. O. T. NETWORK command a large and enthusiastic following. Come and enjoy - especially if electric Asian rhythms are new to you.

Presented in association with Burnley Peace Committee

MUSIC FOR CHRISTMAS

TAPESTRY OF MUSIC present
MUSIC FOR A MEDIEVAL CHRISTMAS



HAWORTH ART GALLERY, ACCRINGTON: THURSDAY 19 DECEMBER 8pm
TOWNELEY HALL, BURNLEY: FRIDAY 20 DECEMBER 8pm

TICKETS £5.00 CONCESSIONS £3.00 (Includes mince pies and mulled wine)

What better way to get into the Christmas spirit than spend an evening in a historic gallery enjoying medieval music played on a variety of authentic instruments. Whether your weakness is for harpsichord, hurdy-gurdy, recorder or flute (or mince pies), take an evening off from the Christmas rush, relax and enjoy yourself.

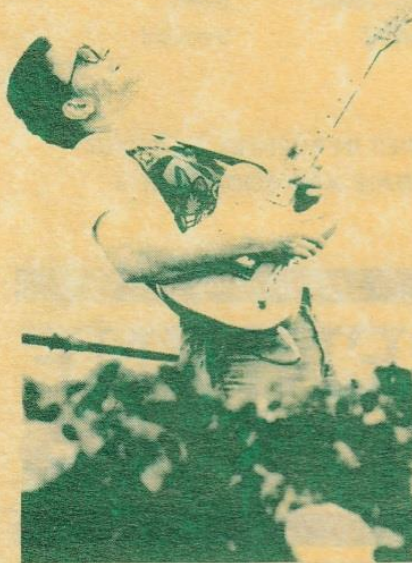
JANUARY 1992

JIM MULLEN QUARTET

CIVIC HALL, BARROWFORD
FRIDAY 24 JANUARY 1992 8pm
TICKETS £4.00
CONCESSIONS £2.50



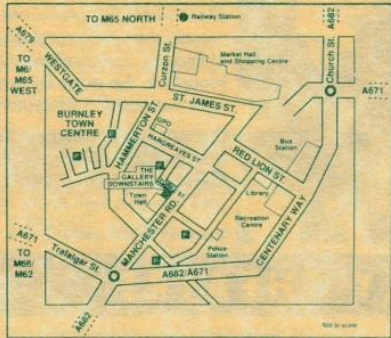
To start January off as we mean to go on, we are glad to bring this exciting Jazz/Funk quartet to the area. The band has a reputation for creating powerfully rhythmic and innovative music, as their many fans will confirm. Jim Mullen has toured extensively, including America, with Average White Band, and is joined by saxophonist Mornington Lockett, bass player Laurence Cottle and Ian Thomas on drums. Brave the weather and join us on a truly memorable evening.



Supported by Jazz North West.

The GALLERY Downstairs

YORKE STREET, BURNLEY, BB11 1HD
TELEPHONE: BURNLEY (0282) 21986, 29513



ADMISSION IS FREE

OPENING HOURS

Monday - Saturday 10am to 5pm
except Thursday 1pm to 5pm

Thursday 10am to 1pm - educational groups only.
Please book in advance.



DISABLED PEOPLE ARE WELCOME

and wheelchair users can gain access via our ramp. Guide dogs are welcome. If you need help you have only to ask. We have adapted toilet facilities.

TO ALL TEACHERS AND GROUP LEADERS

On Thursday mornings your class or group can work or enjoy a lesson in The Gallery Downstairs without interruption, as the Gallery is reserved exclusively for educational purposes until 1pm

Please telephone Julian Pearce on (0282) 21986 for further information, or to book your time.

Mid-Pennine Arts aims to increase the enjoyment and understanding of contemporary visual arts, and we offer facilities for practical workshops, study sessions, talks and seminars to schools and colleges and to other interested groups. Let us know what you would like to learn about.

Mid-Pennine Arts Association gratefully acknowledges the financial assistance of the Borough Councils of Burnley, Hyndburn, Pendle and Rossendale, the Township of Todmorden, North West Arts Association, Yorkshire Arts and Lancashire County Council.



The information in this brochure is correct at the time of going to press but MPAA reserves the right to cancel or amend the programme due to unforeseen circumstances. The work of Mid-Pennine Arts is supported by the Corporate Membership of Co-operative Retail Services Ltd and Marks and Spencer plc and by the Membership of 91 non-profit making local organisations.

Print & Design by Dalton & Co. (Printers) Ltd., Bank Street/Warner Street, Accrington Tel: (0254) 871666 Fax: (0254) 871148

VISUAL

THE GALLERY DOWNS CHRISTMAS CRAFTS

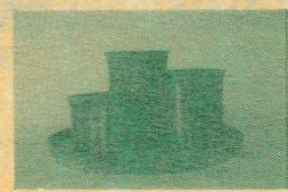
9 NOVEMBER - 23 DECEMBER

Don't miss this year's remarkable collection of Crafts for Christmas. Whether you're seeking a very unusual present - for yourself or for someone special - or just browsing, there's a dazzling display of original craftwork for you to choose from.

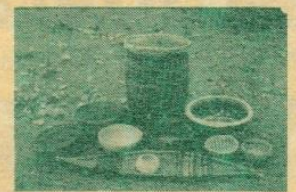
The display will include work from more than 50 craftspeople many of whom have become established favourites as well as new and up-and-coming makers with innovative ideas and designs to surprise and delight.

Ceramics, both decorative and practical, modern and traditional, an amazing range of silver and fashion jewellery, wood that's as good to touch as it is to look at, shimmering textiles, iridescent glass, a whole new selection of original paintings and prints ... and much, much more to please the discerning buyer.

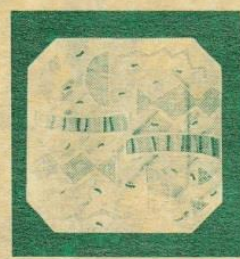
The Gallery Downstairs will be open to the public on Thursday mornings for this show only. The exhibition will close at 4pm on 23rd December.



IAN HARRIS



MOLLY RATHBONE



ALAN BALL



DEREK WILKINSON

WORKSHOP

ALL WRAPPED UP

SATURDAY 30 NOVEMBER 10.30 to 4pm

Create your own original gift wrap using techniques such as batik, folding and paste, Alex Rayton will help you add that special touch to your Christmas presents. All materials provided. Please ring for a registration form and book early as numbers are limited. Fee £5.00 (concession £3.50).

ARTS AND CRAFTS

TAIRS

11 JANUARY - 15 FEBRUARY 1992

LIGHT AND LANDSCAPE

AN EXHIBITION OF PAINTINGS AND DRAWINGS by PETER DOWNING.

From the theatre of light that is Morecambe Bay to the exotic panorama of Southern California's mountains, desert and seascape Peter Downings paintings are an explosion of brilliant colour. They reveal and celebrate the landscape as it is illuminated and transformed by sheets of light and illustrate ways in which living in the North West has stimulated his imagination.

Peter regards his work as a reflection of his life... "they are inseparably woven together and like life itself one is never certain of what is going to happen next."

Peter, Principal Lecturer in Fine Art at Preston Polytechnic before his retirement, will be in the Gallery to talk and answer questions about the work on Saturday, 1 February and again for school parties on Wednesday, 5 February. Further information from Sheenagh Mayo on 0282 21986.



CRAFT SHOWCASE

MIKE SCOTT

References to archaeology - amphitheatres, ruins and the like - invite further exploration of the large and dramatic wooden vessels created by Mike Scott.

He is inspired by vessels and forms from other cultures and traditions and using elm and oak burrs (those massive swellings seen growing around the lower part of the tree trunk) colour, hardness, age, grain and texture all play a part in the development of a piece. Rope, iron, leather and cord are sometimes incorporated and often areas from the outside of the tree surface are left to create sculptural effects.



JEWELLERY SHOP



JUDY CLAYTON

Richly coloured jewellery, embroidered onto layers of silk and sculptured to give a textured surface, is adorned with beaten brass shapes and painted beads.

JANE DICKINSON

A range of decorative silver jewellery inspired by nature reflects the delicate shapes of honesty seeds, sometimes incorporating semi-precious stones and cultured pearls.



OUT & ABOUT

PHOTOGRAPHY

BACK IN TOWN

PHOTOGRAPHY EXHIBITION by DARREN BROWN

PUBLIC LIBRARY, HASLINGDEN

2 - 30 NOVEMBER

Darren Brown looks at Burnley Football Club and proves there is life after professional football. The exhibition includes views of the town, the club, the fans and some of the former Turf Moor favourites such as Tommy Cummings, Jack Butterfield and Jimmy McIlroy who still live and work in the area.

YOUNG PEOPLE'S PHOTOGRAPHY PROJECT

NOW AND THEN with ACTION FACTORY

BRIERFIELD YOUTH CENTRE

Develop your photographic and sound recording skills by joining this ongoing project to create an overview of 25 years of teenage culture in East Lancashire. All equipment is provided and the resulting exhibition will be shown in The Gallery Downstairs in February '92. For further details ring 0282 21986.

FILM

PABLO PICASSO

THE LEGACY OF A GENIUS

NELSON & COLNE COLLEGE, LINDEN ROAD CAMPUS, COLNE

TUESDAY 19 NOVEMBER 7pm ADMISSION FREE

Take this opportunity to see the filmed account of Picasso's work and the effect it has had on the art of this century. It covers the Blue and Rose period, Cubism and the collaboration with Braque, collage and sculpture, and the late Tardot pictures.

A number of key paintings are discussed in detail including Les Femmes d'Alger (1911) and Guernica (1937).

IN PENDLE

MIRO - UBU ROI

PENDLE ARTS GALLERY, NELSON

4 - 25 JANUARY 1992

Miro had long wanted to illustrate Jarry and the larger than life character Ubu perfectly illuminates many of the qualities in Miro's art.

Miro's great ability as a lithographer is brilliantly portrayed in these vivid and humorous works, from the set published by Teriade in 1966.

A South Bank Centre touring exhibition.



DIARY OF EVENTS

DATE	EVENT	VENUE
NOVEMBER		
2 - 30	DARREN BROWN Exhibition	Haslingden
4	ADRIAN HENRI	Accrington
7	MANCHESTER CAMERATA	Colne
9 - Dec 23	CHRISTMAS CRAFTS Exhibition	Burnley
11 - 15	HORSE & BAMBOO Guided Imagery	Rawtenstall
13	YORK GUITAR QUARTET	Accrington
14	AL MASRAH Theatre (Palestine)	Burnley
17	RED LADDER	Great Harwood
19	LEGACY OF A GENIUS Film	Colne
20	COMPASS THEATRE Excursion	Bradford
21	HORSE & BAMBOO The Wish	Cornholme
28	SNAP Tale of Two Cities	Oswaldtwistle
30	ALL WRAPPED UP Workshop	Burnley
DECEMBER		
5	LIP SERVICE	Todmorden
7	O. T. NETWORK Bhangra	T. B. C.
12	MANCHESTER CAMERATA	Colne
19	TAPESTRY OF MUSIC	Accrington
20	TAPESTRY OF MUSIC	Burnley
JANUARY		
4 - 25	MIRO - UBU ROI Exhibition	Nelson
11 - Feb 15	PETER DOWNING Exhibition	Burnley
24	JIM MULLEN QUARTET	Barrowford

ARTS FOR COMMUNITIES IN BURNLEY, HYNDBURN,
PENDLE, ROSSENDALE AND TODMORDEN.

MID-PENNINE
A R T S 