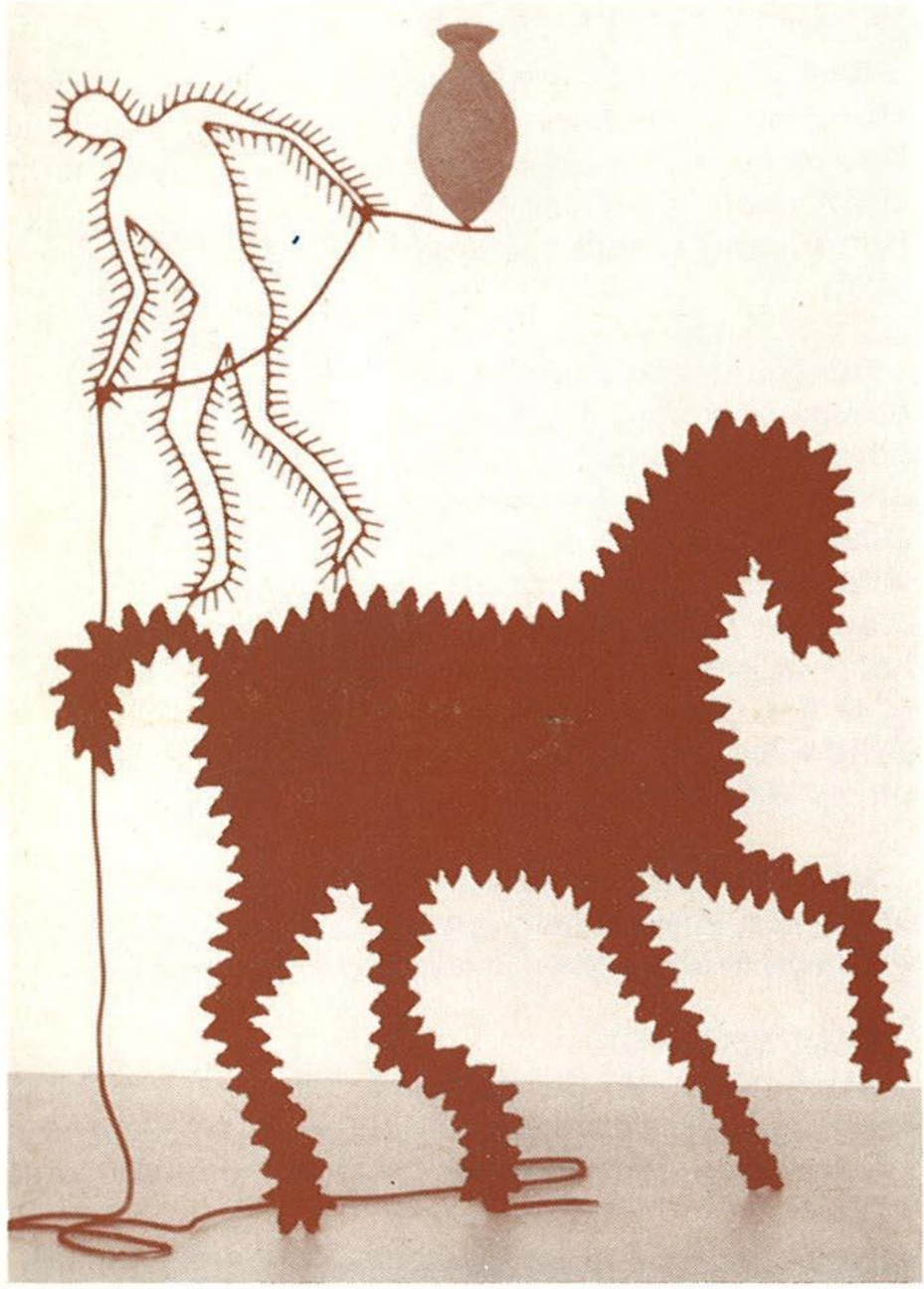

The
GALLERY
Downstairs

WINTER & SPRING 1991



Zadok Ben - David

**MP MID-PENNINE
ARTS ASSOCIATION**

10th JANUARY – 12th FEBRUARY

Woven Responses

AN EXHIBITION OF TAPESTRY
WEAVING BY SHIRLEY ROSS &
IVOR WESTWOOD

Textile artists Shirley Ross and Ivor Westwood design stunning tapestries from their shared studio in Dewsbury. All the works are produced on either a shaft loom or a tapestry frame using mainly woollen yarns.

Abstract works bursting with energy and vibrant colour are created in response to natural and man made landscapes. Other pieces are concerned with small fragments of areas – or to the whole in terms of line, form, texture and the play of light and shade across textured and patterned surfaces



Shirley is hoping to work in the Gallery at various times during the exhibition and a loom with work in progress will be included in the display.

DEMONSTRATION

Shirley Ross will be demonstrating her weaving techniques and talking about her work in the Gallery on **Saturday 19th January** between 10.00am and 4.00pm.



16th FEBRUARY – 19th MARCH

THE SUBJECTIVE CITY

Paintings, drawings and reliefs by fifteen artists who explore the physical and emotional aspects of urban life. The 'City' in this show is not one particular place, but a focus on each artist's individual response to the places where they live and work, interpreted through personal experience and perceptions.

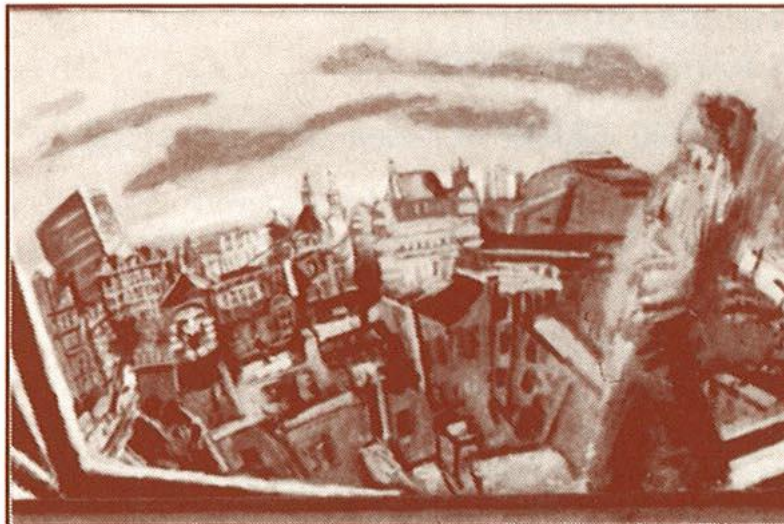
This is an exhibition of contrasts and contradictions like the Cities themselves. Works provide a variety of interests, approaches and techniques creating a balance between the observed outer world and the intellectual and emotional inner world of each artist.

The exhibition was devised and selected by Oliver Bevan and Terry Bennett and includes work by: Oliver Bevan, Paul Butler, Ron Bowen, Michael Downs, Lesley Giles, David Hopher, Timothy Hyman, Peter Howson, Neill Jeffries, Lucy Jones, Susan Light, Jock McFadyen, Lucile Montague, Annabelle Teede, and George Thompson.

A Touring Exhibition from the Cleveland Gallery.

ARTIST IN RESIDENCE

Susan Light will be resident in The Gallery Downstairs for a week during the exhibition, enabling visiting school parties the opportunity to develop their own creative abilities through the experience of working with a professional artist.



TIMOTHY HYMAN The View From Across the City

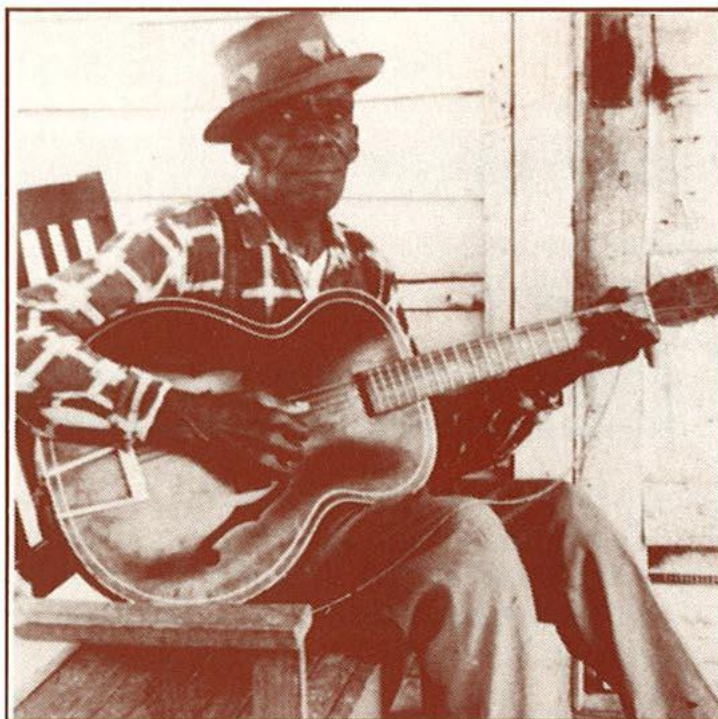
23rd MARCH – 16th APRIL

BUILDING THE BLUES

A PROFILE OF PAUL OLIVER

Paul Oliver is a name synonymous with the cataloguing and recording of the history of the Blues. Our exhibition will include many aspects of his work with photographs, illustrations, publications, recordings of Blues singers, many no longer available, and a selection of items from his collection of African instruments.

Paul began his work in the 1950's with a series of illustrated articles. As a graphic artist he's designed book jackets, and record sleeves for jazz and blues recordings of the 10" era. He's also written around twenty books on the Blues and his other love, vernacular architecture!



His photographic collection includes material based on the culture, architecture and music of many countries. In 1964 he compiled an exhibition 'The Story Of The Blues' for the US Embassy which contained photographs taken in Detroit, Chicago, St. Louis, Memphis, the Deep South and included many portraits of Blues Singers

20th APRIL – 21st MAY

ZADOK BEN-DAVID

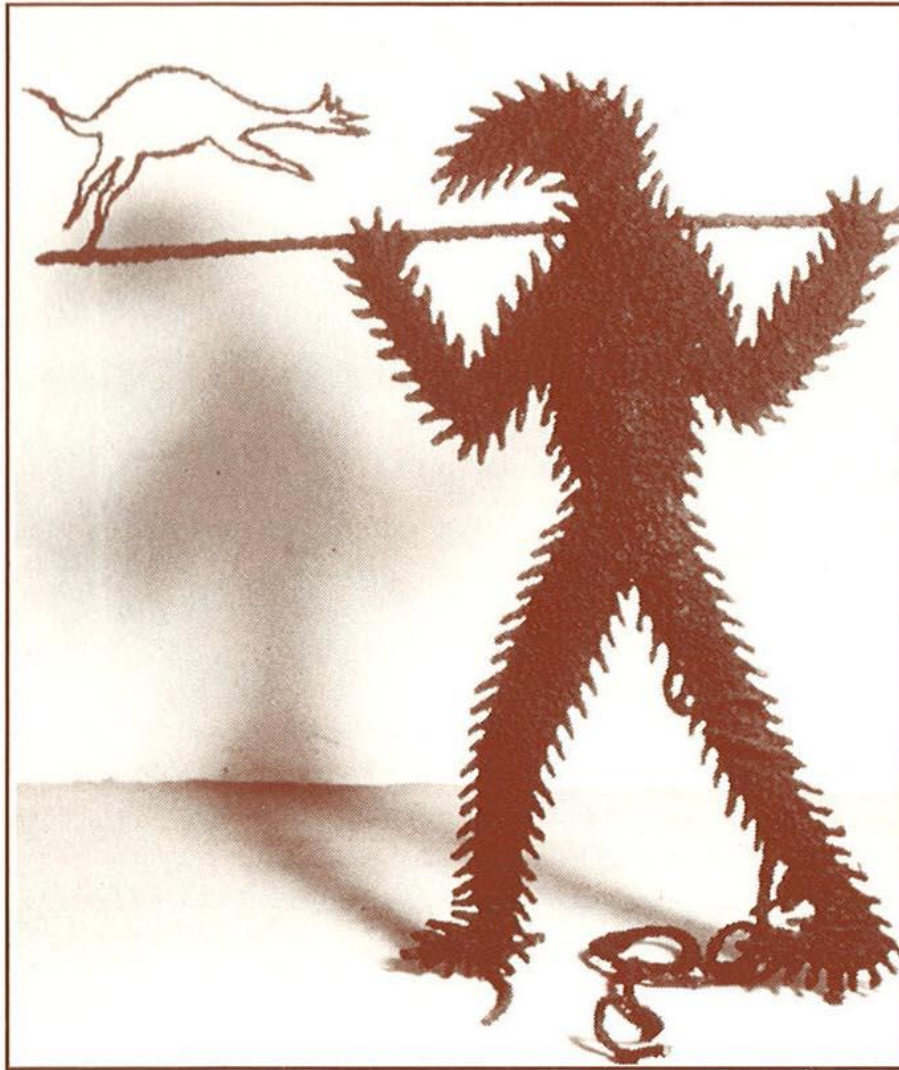
Magical and metamorphic sculpture by Zadok Ben-David, full of contradictions, ambiguities and impossible balancing acts with a 'Hey Presto' quality that sometimes leaves you looking for a string which must surely be holding the structure up.

Born in the Yemen but now living in London, Zadok Ben-David's work is internationally acclaimed. Fables and stories of childhood mingle with the cultures of East and West in titles such as 'Pot On The Rope', which involves a precarious and circus-like balancing act between a man, a horse, a rope and pot, to defy all natural laws and perform the impossible.

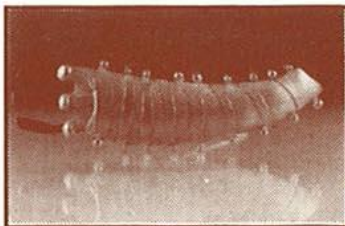
His more recent works have included a series of pieces based on magnetic fields. Lines of magnetic force are elegantly traced in metal, engaging the eye in an hypnotic exploration of the ways in which magnets attract and repel.

A Touring Exhibition
From The Collins Gallery.





20th APRIL – 21st MAY



MIKE ABBOTT

Fantastic jewellery, complex in structure with moving parts, is constructed from embossed brass which is often pierced and hand painted. Original and humorous works explore themes from fantasy to the semi-political.

▲ SARAH PARKER-EATON

Sketches of sea creatures and fossils are transformed into silver pieces with a three dimensional feel. Unusual patterned surfaces are embellished with organic etched designs and polished detail, 18ct gold is sometimes added for a colour contrast.

TANIA SCHWARZ

Matching earrings and brooches contain ethereal flowing fishes and sea shells in textures produced from photo etched silver. Hand punched patterns incorporate gold leaf which is oxidized to give the feeling of age.

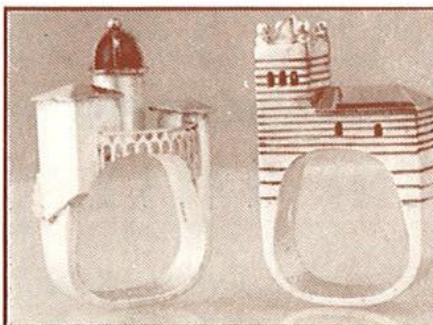


JEWELLERY SHOWCASE

10th JANUARY – 12th FEBRUARY

VICKY AMBERY SMITH

Vicki Ambery-Smith grew up in Oxford and believes the dreaming spires influenced her intricate gold and silver jewellery which is all based on architecture.



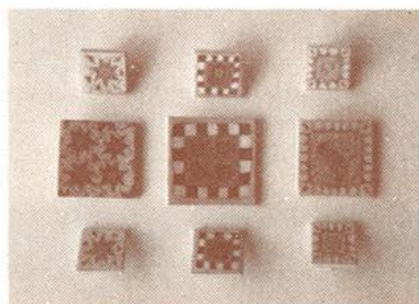
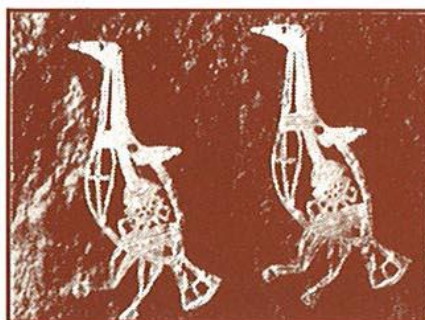
GAIL KLEVAN

Gail works in acrylic, her brightly coloured pieces are backed with silver and gold leaf before varnishing. Earrings are individually drawn to make each piece unique.

16th FEBRUARY – 19th MARCH

HOLLY BELSHER

Plated silver and gold jewellery with a melted surface texture has an ancient feel, from tiny stud earrings to a range of large brooches, which feature the animals and fishes of early cave paintings.



KATE GREAVES

Brooches, earrings and necklaces in stained porcelain on lustre glaze. Metals and enamels are incorporated into stunning post-modernist designs influenced by Egyptian, African and Celtic Art.

23rd MARCH – 16th APRIL

GEOFF ROBERTS

A fun range of jewellery in heat transfer printed acrylic. Vivid and colourful one off designs feature floral patterns and interesting shapes evolved from experimenting with folded and cut paper.

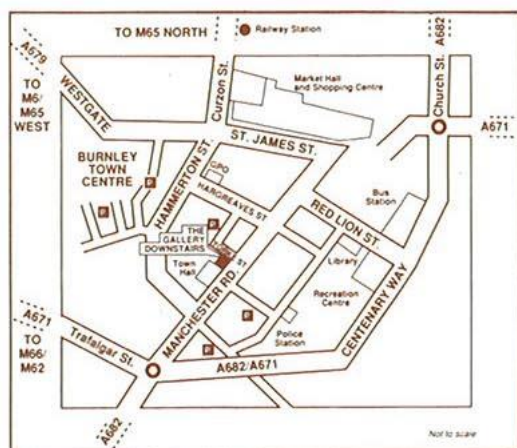


CLARA VICHI

Distinctive silver cuff-links, earrings and brooches incorporate letter forms and extracts of calligraphy from a variety of ages and civilisations. Etched silver is combined with base metals before oxidising to create a grey or bronze colour giving depth to the design.

MID-PENNINE ARTS ASSOCIATION

THE GALLERY DOWNSTAIRS
 YORKE STREET, BURNLEY, BB11 1HD
 TELEPHONE: BURNLEY (0282) 21986, 29513



OPENING HOURS

Monday – Saturday 10.00am to 5.00pm
 Thursday 10.00am to 1.00pm Schools. (by appointment only)
 Thursday 1.00pm to 5.00pm Open as normal

FACILITIES FOR THE DISABLED



We are always pleased to welcome disabled people to The Gallery Downstairs – just ask if you would like a Gallery Attendant to help you. We offer specially designed toilet facilities and ramped access.

ADMISSION IS FREE

TO ALL TEACHERS

Thursday mornings are for the exclusive use of visiting School and College parties, your class can work or enjoy a lesson in the Gallery without interruption. If you would like further information or wish to book a Thursday please contact the staff at MPAA on Burnley (0282) 21986

At The Gallery Downstairs we try to increase enjoyment and understanding of the contemporary visual arts for the whole community. With developments in the Gallery's programme we are able to offer facilities for practical workshops, study sessions, talks and seminars both to schools and colleges and other interested groups.

Mid-Pennine Arts Association gratefully acknowledges the financial assistance of the Borough Councils of Burnley, Hyndburn, Pendle and Rossendale, the Townships of Todmorden and Whitworth, North West Arts Association, Yorkshire Arts and Lancashire County Council.



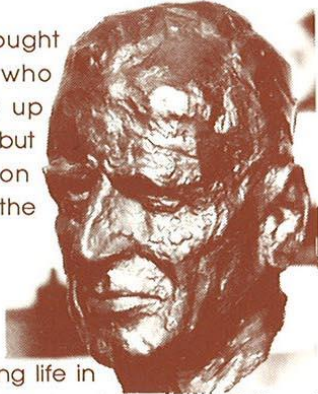
The information in this brochure is correct at the time of going to press but MPAA reserves the right to cancel or amend programme due to unforeseen circumstances.

GALLERY SHOWCASE

10th JANUARY – 12th FEBRUARY

SCULPTED PORTRAITS

SAM TONKISS'S work is much sought after and treasured by those who possess it. Sam did not take up portrait sculpture until he was fifty but his natural talent was soon recognised and commissions of the famous and not so famous soon followed.



Sam Tonkiss was born in Shropshire but spent all his working life in Todmorden, first in industry then journalism, to become Editor of the local newspaper. Now in his eighties with an international reputation his work is in the permanent collections of galleries throughout the United Kingdom and abroad.

16th FEBRUARY – 16th MARCH

JEHANE DU LUART

Pure Wool jackets and jumpers for the coldest of climates feature bright colours and authentic designs influenced by the hot sumptuous shades of the Middle East and the stylised patterns of the Aztecs.



Jehane Du Luart trained in fine art before developing an interest in textiles. Her hand framed garments are finished to produce a feel like the smooth woven fabrics of South America.

23rd MARCH – 16th APRIL

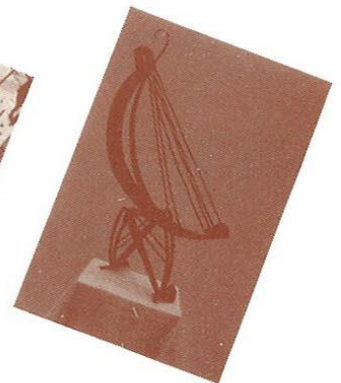
WORKS OF NOTE

BETTINA MITCHELL

Bettina Mitchell's first collection of silks has been inspired by musical imagery which she freely prints, paints and stencils onto the pieces using acid dyes, pigments and a bleaching agent.

JOON-ROSE DAVIS

Sculptures in steel stretch to a third dimension with clear lines and spaces in the form of harps. Joon-Rose Davis has been creating harp sculptures for the last three years; some of the larger works can produce notes to extend their communicative properties. African and Egyptian harps have influenced some pieces which are worked from drawings.



20th APRIL – 21st MAY

COXWOLD POTTERY

Coxwold Pottery is a small country workshop established in 1965 by Peter and Jill Dick. Together they produce a wide variety of kitchen tableware, planters and decorative pieces. Most of their work is thrown, decorated with slip and fired to low temperature in the large wood kiln which gives the glazes and bodies a rich colour and quality. Peter, was trained by Michael Cardew and Ray Finch, also makes a number of platters and other large, more unusual pots for exhibitions and these are marked by his initials as well as the familiar apple-

tree seal of Coxwold. Recently a new range of earthenware has been developed: inspired by the ceramics of Europe, these pots are decorated with brightly coloured slips before firing.

Coxwold Pottery lies in beautiful countryside 20 miles north of York. Visitors are welcome to look around the workshop, and the splendid display of plant-pots in the Pottery Garden



OUT AND ABOUT

ON YOUR WALLS

Bored with blank walls?

Here's a chance to give them a new look. Add interest to the walls of your workplace, from salon to staff canteen, waiting room to absolutely anywhere there's space on a wall. We can provide small scale, original collections of paintings, prints and wall hangings for your colleagues or customers to enjoy.



It's simple to arrange - just ring Mid-Pennine Arts on Burnley (0282) 21986. And it's absolutely FREE!

EXCURSION

THURSDAY 25th APRIL
COURTAULD INSTITUTE GALLERY,
THE STRAND, LONDON

Closing date for registration 15 April 1991
Admission and guided tour £5.50 (Includes underground 'Run Around' ticket.)

Travel to London with British Rail - details on request.

We have arranged for a guided tour of the Courtauld Institute Galleries now housed in Somerset House on the Strand. The founder of the Institute, Samuel Courtauld, gave a magnificent collection of French Impressionist and Post Impressionist paintings in 1932. The Collection is world famous and includes many masterpieces by Degas, Monet, Pissarro and Cezanne.

Somerset House offers a magnificent setting for the Collection whilst retaining the architectural features and detailing of the original building.

IN PENDLE

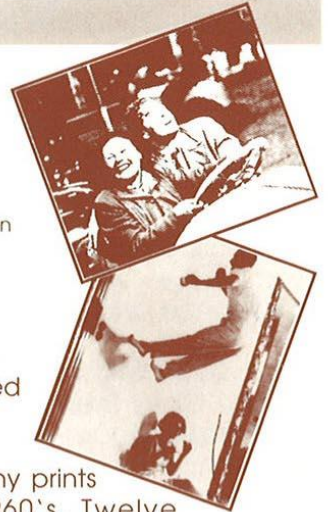
PENDLE ARTS GALLERY
13th APRIL - 12th MAY
Scotland Road, Nelson.

Photographs from the Gilman Collection

'A LEAP IN THE LIGHT'

In 1984 the Gilman Paper Company in the United States published a magnificent, limited edition book of photographs from its collection.

The exhibition consists of many prints from the 1880's to the 1960's. Twelve photographers are represented including work by: Bill Brandt, Cartier Bresson, Man Ray and Diane Arbus. A touring exhibition from the South Bank Centre.



FORDER PHOTOGRAPHS
1st - 28th FEBRUARY

'THE HILL SHEPHERD'

Sensitive and eloquent photographs, by John and Eliza Forder, take us beyond the image of dog and crook, into the private insular world of the hill shepherds of North West England.

IN ROSSENDALE

CRAWSHAWBOOTH COMMUNITY CENTRE,
ADELAIDE STREET
13th APRIL - 26th APRIL

'WITHIN THE HEART' A profile of Quentin Crisp

Artist Blanche Carson, from Crawshawbooth, portrays the life and struggles of Quentin Crisp, illustrating his writing in oil paintings.

MAKING A SPLASH...

In Whitewell Bottom, members of the Youth Club will be joining forces with Manchester based mural artist, Brian Phillips and other users of the Centre; working together and funded by the Youth Club, they will create a colourful and original work of art to make a focal point in the building.