
MID-PENNINE ARTS



PHOTO: APOLLO SAXOPHONE QUARTET

JUNE and JULY
1992

HOW TO BOOK

TICKETS FOR PERFORMANCES, EXCURSIONS AND WORKSHOPS

IN PERSON: Call in at The Gallery Downstairs, Yorke Street, Burnley.

OPENING HOURS

Monday – Saturday 10am to 5pm
except Thursday 1pm to 5pm

BY TELEPHONE: By ringing **0282 21986/29513**

CREDIT CARD BOOKINGS: Be sure of your tickets. You can book by credit card either by calling in or by telephone. All Access, Eurocard, Mastercard and Visa cards are accepted.

BY POST: Please enclose an S.A.E. and send bookings to:

MID-PENNINE ARTS,
The Gallery Downstairs,
Yorke Street, Burnley BB11 1HD
Please make cheques payable to MPAA

CONCESSIONS: Concessionary rates are offered to those in full-time education, unemployed people, senior citizens, registered disabled people, members of Bury Metropolitan, and now to our members.

GROUP REDUCTIONS: If you buy ten tickets you will receive one extra ABSOLUTELY FREE.

MEMBERS SAVE MONEY!

Join Mid-Pennine... for just a small subscription you can claim the **Concession Ticket Price** at MPA events. Plus regular mailing, invitations to openings, equipment loans, and other discounts... and now **5% off all purchases** by cash or cheque in the GALLERY DOWNSTAIRS!

Ring Melanie on **0282 21986** and find out more.

BUY YOUR TICKETS LOCALLY

Mid-Pennine Arts tickets are available from:

ACCRINGTON	ALTHAMS TRAVEL SERVICES, 26 Blackburn Road HYNDBURN LEISURE, Gothic House, St James Street
BACUP	PUBLIC LIBRARY, St James Square FIRST STEPS (Business Consultants), Fiscal House, 27 St James Street
BARNOLDSWICK	TOURIST INFORMATION, Fernlea Avenue
BLACKBURN	ALTHAMS TRAVEL SERVICES, 12 Ainsworth Street
BURY	BURY METROPOLITAN, Derby Hall, Market Street
CLITHEROE	ALTHAMS TRAVEL SERVICES, 20 King Street TOURIST INFORMATION CENTRE, Church Walk
COLNE	ALTHAMS TRAVEL SERVICES, 13 Albert Road PENDLE LEISURE SERVICES, Bank House, 61 Albert Road
HASLINGDEN	PUBLIC LIBRARY, Deardengate
NELSON	ALTHAMS TRAVEL SERVICES, 1 Scotland Road TOURIST INFORMATION CENTRE, 20 Scotland Road
RAWTENSTALL	CENTRAL LIBRARY, Queens Square TOURIST INFORMATION CENTRE, 41-45 Kay St.
TODMORDEN	ALTHAMS TRAVEL SERVICES, 15 Halifax Road BEARS WHOLEFOODS, 29 Rochdale Road

OUTDOOR EVENTS

THE FABULOUS SALAMI BROTHERS

BACUP CARNIVAL

SATURDAY 27th JUNE, 12 noon - 5pm

The summer season wouldn't be complete without at least one visit from The Fabulous Salamis! These old friends of Mid-Pennine Arts, well-known throughout the area, are back again to add colour to the carnival and to entertain us all with their death-defying stunts, breath-taking feats of skill and zany humour. Watch out. There's a Salami about!

A Joint Promotion with Rossendale Borough Council.

OSWALDTWISTLE STREET FAIR

SATURDAY 4th JULY, 11am - 4pm

For one day Oswaldtwistle is transformed into a festive pedestrian precinct of stalls, sideshows and fun for all the family. Mid-Pennine will be adding to the bill with special guest performers. A great day out, and it's free!

FUN IN THE PARKS

THE MUSHY PEA JUGGLING COMPANY plus BRASS BAND

RHYDDINGS PARK

SUNDAY 14th JUNE, 3pm ONWARDS

These two highly talented and widely travelled entertainers will juggle, clown and frolic their way through the afternoon, bringing family fun to the festivities, and more than a touch of fearlessness with the highly dangerous, and now infamous, line of death...

JUKALO THE JUGGLER plus BRASS BAND

HAWORTH ART GALLERY ROSE GARDEN

SUNDAY 12th JULY, 3pm ONWARDS

Jukalo the Juggler, son of Sandow the Strongman, is head and shoulders above other jugglers! Don't miss his routine of juggling and manipulation perched 10 or 12 feet in the air on top of his custom built hat stand. This is 'high-class' entertainment!

Both events are Joint Promotions with Hyndburn Borough Council.



GRAND OPENING

THE INFORMATION SHOP

BROADWAY, ACCRINGTON

SATURDAY 27th JUNE, 1pm ONWARDS

One-stop shopping for the under 26's!

The Information Shop is a pilot project for a national scheme to provide an easy source of help for young people. The scheme will make it easier for young people to find the information and advice they need about issues affecting their lives; jobs, homelessness, travel, leisure, education and just about any problem they encounter.

To mark the opening of this important project there will be a gathering of the best local bands, street theatre and graffiti artists in the town centre.

Be there!

DANCE...

'TALES FROM HOME' - with IRINA TOPALOVA

SANDY LANE CAMPUS, ACCRINGTON AND ROSSENDALE COLLEGE

TUESDAY 16th JUNE, 7.30pm

ADMISSION £3.50 CONCESSIONS £2

A unique opportunity to see the work of this remarkable dancer. Irina Topalova is a well known performer in her native country of Bulgaria, where she is based at a specialist dance school in Blagoevgrad. By special invitation she will take up a residency during June at Accrington and Rossendale College with Dancepace, a locally based performance company.

Irina will work with students from the college and with pupils from Hyndburn schools. Their project will draw upon the rich sources of Bulgarian culture and the folk-lore of Britain to create a public performance which will fascinate and delight.

Presented in association with Accrington and Rossendale College.

...AND MUSIC FOR SCHOOLS...

APOLLO SAXOPHONE QUARTET

PADIHAM TOWN HALL

THURSDAY 11th JUNE, 10.30am and 1.30pm

The Apollo Saxophone Quartet are part of Live Music Now! a national scheme established by Sir Yehudi Menuhin, to bring music to all parts of the community, including some who might not otherwise enjoy this happy experience.

During their visit to the Mid-Pennine area The Apollo Saxophone Quartet will conduct two music-making workshops with children from special schools in Hyndburn as well as the two performances at Padiham Town Hall, which are also for special schools.

Any teacher who would like to bring a party to a performance should contact Howard Rifkin as soon as possible on Burnley 21986 or 29513.

Presented in association with Live Music Now!



...AND MORE MUSIC

BHANGRA CONCERT - NASEEB

CENTRAL LIBRARY, ACCRINGTON

SATURDAY 20th JUNE, 7.30pm

ADMISSION £3 CONCESSIONS £2

These are five good looking guys from Bradford with boundless energy, who write all their own material. They are well-known in and around Bradford and are fast becoming famous among young Asians. Their first album 'Break In The City' reached no.1 in the Bhangra Charts and their current release 'Freak Out' is selling like hot samosas!

Presented in association with Lancashire Libraries Ethnic Services.



JAZZ WORKSHOPS

MAINSTREAM JAZZ WEEK

HABERGHAM SIXTH FORM CENTRE

MONDAY 27th TO FRIDAY 31st JULY

The annual jazz workshop has established itself as one of the best and most popular jazz courses in the country. This year, as last, the course will run at two levels concurrently, one to introduce competent players to the theory and performance of mainstream jazz, and the other for those who already have some jazz playing experience. Jazz College will again provide an able and experienced team of tutors including Stan Barker, Paul Mitchell-Davidson, Al Wood, Digby Fairweather and Dave Hassell.

JAZZ COLLEGE ALL-STARS plus SPECIAL GUEST

BURNLEY MECHANICS

FRIDAY 31st JULY, 8pm

The mainstream course will culminate in a public performance by the tutors, who will be joined by a guest artist from The Royal Northern College of Music in Manchester.

CONTEMPORARY JAZZ WEEKEND

SATURDAY 1st AND SUNDAY 2nd AUGUST

A weekend workshop on contemporary jazz will follow on for those of different inclinations and for those with enough stamina for both! This is an opportunity to rehearse two pieces specially written for the course by Stan Barker and Paul Mitchell-Davidson incorporating contemporary idioms.

COST

Mainstream week and contemporary weekend £55

Fulltime students/unemployed £38

Mainstream week only £44

Concessions £32

Contemporary weekend £22

Concessions £13

Further details and application forms from M.P.A. or from Burnley Mechanics.

The workshops are presented in association with Burnley Mechanics, with financial assistance from The Musicians Union and North West Arts Board.

EXCURSIONS

YORKSHIRE SCULPTURE PARK

BRETTON HALL, WEST YORKSHIRE

SUNDAY 5 JULY

COST £8

The parkland of Bretton Hall, landscaped in the eighteenth century, provides a wonderful backdrop both for permanently sited sculptures and for temporary exhibitions. The displays planned for July include large bronzes by Barry Flanagan and an extensive range of work by Phillip King.

The sculpture park has a cafe and gift-shop, and excellent facilities for the disabled, including the specially designed Access Trail.

Why not join us for a gently stimulating day out?

We pick up from 11am in Nelson, Burnley, Accrington, Rawtenstall and Todmorden and set off home around 4pm.

GRIZEDALE SCULPTURE PARK

GRIZEDALE FOREST, AMBLESIDE

SUNDAY 26th JULY

COST £9

If you go down to the woods in Grizedale you're sure of a big surprise!

Here the sculptures are not set against the landscape but created on site to be part of the forest environment. A wealth of experiences awaits the intrepid explorer, to evoke responses of awe, amusement, tranquillity and more than one surprise!

We pick up from 10am in Nelson, Burnley, Rawtenstall and Accrington and depart Grizedale around 5pm.

Registration or further details from The Gallery, or ring Janet Clunie on 0282 21986.



JAZZ AT THE BLUE NOTE



DON WELLER with THE NORMAN FISK TRIO

THE BLUE NOTE, off BURNLEY ROAD, TODMORDEN
THURSDAY 25 JUNE, 8pm
ADMISSION £4 CONCESSIONS £2.50

If Don Weller were American he would be a household name! One of the great masters of the tenor sax, he has a style which is earthy, ebullient and delicate by turns but always compelling. He is a very welcome visitor to Todmorden's new nightspot.

THURSDAY 30th JULY, 8pm

Guest musicians to be confirmed. Please ring M.P.A. for details.

Both events presented in association with The Blue Note.

DID YOU KNOW?...

...that as a member of Mid-Pennine you could save pounds every season? For just a small subscription, members receive concession rate tickets for these and most MPA events, as well as many other benefits. Ring Melanie on 0282 21986 for further details.

JAZZ AND BLUES IN COLNE

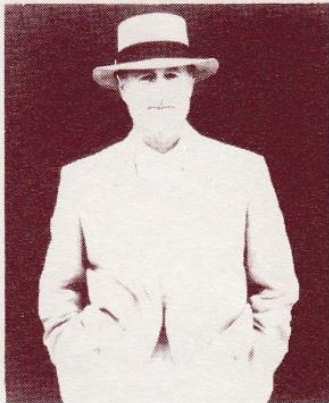
THE MOSE ALLISON TRIO

MUNICIPAL HALL, COLNE

SUNDAY 5th JULY, 8pm
ADMISSION: £9 BALCONY
£8 STALLS

The legendary singer/pianist makes a rare U.K. visit and just one appearance in the North West. Mose grew up in the Mississippi Delta listening to Tampa Red and Sonny Boy Williamson, but his piano style was honed in the New York groups of Stan Getz and Gerry Mulligan, hence the unique laconic style of the composer of 'Seventh Son', 'Parchman Farm' and 'I Don't Worry 'Bout A Thing'.

Don't miss him!



THE JAMES COTTON BIG BAND

MUNICIPAL HALL, COLNE

MONDAY 10th AUGUST, 8pm
ADMISSION: £10 BALCONY
£9 STANDING

A brilliant summer in Colne continues with one of the great sounds of classic Chicago Blues. James Cotton added his unmistakable blues harp to most of Muddy Waters' hits on Chess Records from 1954 to 1966. His high energy big band includes Pinetop Perkins on piano and the last great Muddy Waters rhythm section.

These events are Joint Promotions with Pendle Borough Council.

CALENDAR

DATE	EVENT	VENUE
JUNE		
- Sat 27	THE PRINT SHOW	The Gallery Downstairs
- Tue 30	NOW! Photographs	Pendle Mini-Libraries
Sat 6	DRYPOINT ETCHING Workshop	The Gallery Downstairs
Sat 6 - Tue 30	LIFE IN THE HILLS Photographs	Haworth Art Gallery
Wed 10	APOLLO SAXOPHONE QUARTET	Hyndburn Schools
Thu 11	APOLLO SAXOPHONE QUARTET	Padiham Town Hall
Sat 13	MONOPRINTING Demonstration	The Gallery Downstairs
Sun 14	MUSHY PEA JUGGLERS	Rhyddings Park
Tue 16	TALES FROM HOME Dance	Sandy Lane Campus, Accrington and Rossendale College
Sat 20	COLLOGRAPH Demonstration	The Gallery Downstairs
Sat 20	BHANGRA CONCERT	Accrington Library
Thu 25	DON WELLER	The Blue Note, Todmorden
Sat 27	THE FABULOUS SALAMIS	Bacup Carnival
Sat 27	GRAND OPENING The Information Shop	Accrington Broadway
JULY		
Wed 1 - Thu 30	NOW! Photographs	Earby Libraries
Sat 4	STREET FAIR	Oswaldtwistle
Sat 4 - Sat 8 Aug	MAGIC CARPET RIDE	The Gallery Downstairs
Sun 5	EXCURSION	Yorkshire Sculpture Park
Sun 5	MOSE ALLISON	Colne Municipal Hall
Mon 6 - Thu 30	LIFE IN THE HILLS Photographs	T.I.C. Barnoldswick
Sun 12	JUKALO the JUGGLER	Haworth Art Gallery
Tue 21	TRAVELLERS' TALES Talk	The Gallery Downstairs
Sun 26	EXCURSION	Grizedale Sculpture Park
Mon 27 - Fri 31	MAINSTREAM JAZZ Workshops	Habergham 6th Form Centre
Thu 30	BLUE NOTE JAZZ	The Blue Note, Todmorden
Fri 31	JAZZ COLLEGE ALL-STARS	Burnley Mechanics
AUGUST		
Sat 1 - Sun 2	CONTEMPORARY JAZZ Workshops	Habergham 6th Form Centre
Sat 1 - Sat 29	THE PRINT SHOW	Rawtenstall Public Library
Mon 3 - Sat 29	LIFE IN THE HILLS Photographs	Colne Public Library
Sat 8	CARPET WEAVING Demonstration	The Gallery Downstairs
Mon 10	JAMES COTTON BIG BAND	Colne Municipal Hall

VISUAL ARTS

THE GALLERY DOWNSTAIRS

23rd MAY - 27th JUNE

THE PRINT SHOW

Take a closer look at the skills of the Printmaker and perhaps acquire your own original work of art. This versatile and flexible art form includes etchings, linocuts, wood engravings and screenprints, shown here alongside computer prints and collographs. Each has particular qualities of tone and texture. Proof that printmaking offers much more than the accepted reproduction of classical paintings and posters.

From dramatic landscapes to tranquil seascapes, from the very particular architecture of Venice and the rich decor of opulent interiors to the simplicity of flowers, the exhibition offers a lavish diversity of themes and styles. All the works are for sale.

If looking at prints inspires you to try your hand, a series of workshops and demonstrations will take place each Saturday during the exhibition. Please see 'ACTIVITIES' for details.



MARK UNSWORTH

GALLERY SHOWCASE

RECLAIMED!

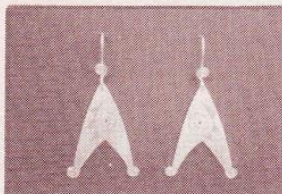
Recycled materials are used to exciting and creative effect in this month's showcase:

Charlotte Cortazzi uses papier-mache to make fascinating and imaginative creatures in brilliant colours influenced by legends and folk art. Seashells and seapods are reflected in Isobel Smith's baskets and bowls, combining collected papers, thread, cane, raffia and fabric. Alex Rayton applies exciting colours and patterns in original designs onto recycled cardboard which is then woven into functional containers. Masks and faces feature in Nick Robinson's fold-paper sculptures from wrappers and magazines involving patterning and an awareness of natural formation.



ALEX RAYTON

JEWELLERY SHOP

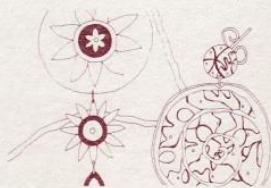


NICHOLA CLARKE

A striking collection of jewellery for spring in which perspex is transformed by combining it with silver, paper and stones to give unusual decorative effects.

FIONA MAGUIRE

A combination of curved edges, zig-zags and swirls feature in surface patterns in oxidised silver, sometimes with touches of gold to give a classical elegance to this sophisticated range.



4th JULY - 8th AUGUST

MAGIC CARPET RIDE

Dreaming of far away places this summer, we have a unique collection of kilims, rugs, textiles, furniture and decorations from the East, brought to this country by the Gordon Reece Gallery of Knaresborough.

The art of the oriental kilim - carpets flat-woven by the people of nomadic tribes - remains little known in the West to the present day. The lifestyle of these people in remote and inaccessible places has ensured that traditional techniques have continued uninterrupted for centuries. Rich natural dyes and fine workmanship, decorative patterns and styles remain unaffected by the changing demands of fashion.

Each of these pieces has its own story to tell.....each item is recreating the history and legacies of these remarkable tribes.



GALLERY SHOWCASE

An Aladdins Cave collection of wooden bowls and chests, candlesticks and oil-lamps, ceramics and jewellery all from the Gordon Reece Gallery. The textile theme is continued here with woven bags in lively appealing patterns. The broad palette of harmonious colours, and range of styles reveal the rich and varied cultures of many regions, from the mountains of the North West Frontier to the deserts of Baluchistan, Anatolia and Kazakstan.

*** MEMBERS - Remember you can now buy goods from the Gallery Downstairs with 5% DISCOUNT off the normal selling price!**



JEWELLERY SHOP



JILL NEWBROOK

Jill's designs are inspired by the wood-blocks used to print Japanese kimonos. They are etched onto silver with added detail in deep yellow and gold and an oxidising process is then used to emphasise the design.

ALDYTH CROWTHER

Aldyth's jewellery is large, bold and colourful in unusual flowing shapes. The textured and patterned surfaces incorporate semi-precious stones, glass and gold applique.



AND CRAFTS

ACTIVITIES

SATURDAY 6th JUNE, 10am - 4pm

DRYPOINT ETCHING WORKSHOP - FRANCES MORGAN

Cost £12 including materials, Concessions £8

A one-day workshop in which you can make your own print in black and white or colour. All materials are provided and you can produce your own artwork from still-life studies in the Gallery, or bring along your own ideas.

Frances will show you how to work on the metal plates using the dry-point technique and by the end of the day you will have made a 'limited edition' of prints to take away with you.

Registration forms available from The Gallery Downstairs. Maximum 12 participants.

SATURDAY 13th JUNE, 10am - 4pm

MONOPRINTING DEMONSTRATION - JILL BLACKHURST

Jill uses richly coloured inks applied to sheets of metal or perspex, which she then uses as her printing plates. Through this technique she is able to build up areas of colour, pattern, tone and texture to recreate the landscapes and architectural forms which provide her source imagery.



SATURDAY 20th JUNE, 10am - 4pm

COLLOGRAPH DEMONSTRATION - PERVEEN SHAH

Perveen creates fragile collographs with an ancient and primitive feel. The printing techniques she uses enable her to react immediately to her subject and generate the energy evident in her work.

SATURDAY 8th AUGUST, 10am - 4pm

CARPET WEAVING DEMONSTRATION - STAFF FROM THE GORDON REECE GALLERY

The bold geometric patterns and rich glowing colours of the kilims on display in Magic Carpet Ride are hand woven in Eastern towns and villages, using simple looms and great dexterity.

This is an opportunity to see how these wonderful, timeless designs are created, using a ground loom with traditional flat weave and knotting techniques.

The staff from the Gordon Reece Gallery will explain the methods as they work, and talk about the different patterns in relation to the geographic areas from which they originate.



TUESDAY 21st JULY, 7.30pm

'TRAVELLERS TALES' - AN ILLUSTRATED TALK BY GORDEN REECE

Gorden Reece runs an internationally known gallery in Knaresborough, where he exhibits and sells carpets and artefacts not just from the East but from many parts of the globe.

Gorden himself has travelled to exotic, isolated and sometimes dangerous places in search of original and unusual pieces. He knows the geographic and cultural background of each item and has many 'travellers' tales to tell. His talk promises to be both informative and entertaining.



OUT AND ABOUT

WALLSPACE

Why not have your own art exhibition delivered and installed absolutely free?

WALLSPACE is a picture loan service offering small-scale collections of original paintings, prints and wall-hangings by exceptional British artists. It is available to local businesses and meeting places and is adaptable to many kinds of space from offices, waiting-rooms and entrances to staff-rooms, cafés and restaurants.

Why not make life a little brighter and more interesting for your customers, your staff or even for yourself?

For more details contact Sheenagh on Burnley 21986 or 29513.



JEREMY TURNER

LIFE IN THE HILLS

PHOTOGRAPHS BY JOHN AND ELIZA FORDER

6th - 30th JUNE

HAWORTH ART GALLERY, ACCRINGTON

6th - 30th JULY

TOURIST INFORMATION CENTRE, BARNOLDSDWICK

3rd - 29th AUGUST

PUBLIC LIBRARY, COLNE

Another revealing study by John and Eliza Forder about life in the hills of Northern England. This time they explore the work of the Dales vet, the role of farming women, the task of running a high Lakeland farm and the life of farm children. This new exhibition of coloured photographs gives us a detailed insight into the nature of family life and work in the Uplands.



NOW!

THE PICTURE OF YOUR LIFE with ACTION FACTORY

Following the NOW AND THEN project with Nelson and Colne College, young people from schools in Burnley and Pendle have created their own distinctive photographic exhibition. Self-portraits and individual personality and lifestyle profiles present a fascinating and entertaining insight into the way young people think and feel about being young in the Nineties.

1st - 30th JUNE

PENDLE MINI-LIBRARIES

1st - 30th JULY

EARBY LIBRARY

A joint project with Action Factory, Lancashire County Libraries and Pendle Youth Service.

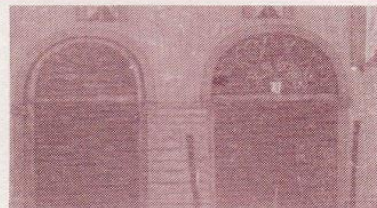
THE PRINT SHOW

PUBLIC LIBRARY, RAWTENSTALL

1st - 29th AUGUST

A selection from The Print Show seen in The Gallery Downstairs in June, including work by a number of local artists.

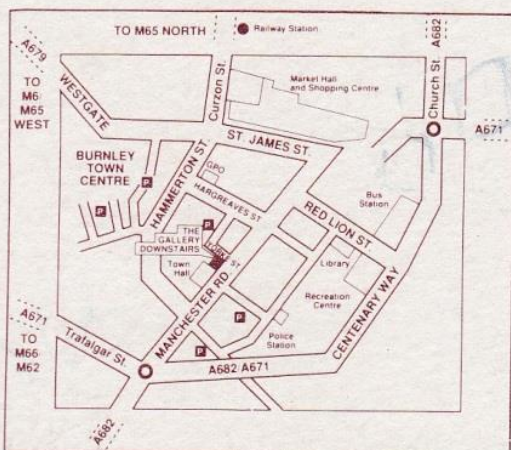
See Gallery Section for more details.



SUE HENDERSON

The GALLERY Downstairs

YORKE STREET, BURNLEY, BB11 1HD
TELEPHONE: BURNLEY 0282 21986 / 29513



ADMISSION IS FREE

OPENING HOURS

Monday – Saturday 10am to 5pm
except Thursday 1pm to 5pm

Thursday 10am to 1pm - educational groups only.
Please book in advance.

DISABLED PEOPLE ARE WELCOME

and wheelchair users can gain access via our ramp. Guide dogs are welcome.
If you need help you have only to ask. We have adapted toilet facilities.



TO ALL TEACHERS AND GROUP LEADERS

On Thursday mornings your class or group can work or enjoy a lesson in The Gallery Downstairs without interruption, as the Gallery is reserved exclusively for educational purposes until 1pm.

Please telephone Julian Pearce on 0282 21986 for further information, or to book your time.

Mid-Pennine Arts aims to increase the enjoyment and understanding of contemporary visual arts, and we offer facilities for practical workshops, study sessions, talks and seminars to schools and colleges and to other interested groups. Let us know what you would like to learn about.

Mid-Pennine Arts gratefully acknowledges the financial assistance of the Borough Councils of Burnley, Hyndburn, Pendle and Rossendale, the Township of Todmorden, North West Arts Board, Yorkshire and Humberside Arts and Lancashire County Council.



The information in this brochure is correct at the time of going to press but MPA reserves the right to cancel or amend the programme due to unforeseen circumstances. The work of Mid-Pennine Arts is supported by the Corporate Membership of Co-operative Retail Services Ltd and Marks and Spencer plc and by the Membership of 91 non-profit making local organisations.

