
MID PENNINE ARTS



Ed Jones: Jazz at the Blue Note

APRIL **1993** & MAY

HOW TO BOOK

TICKETS FOR PERFORMANCES, EXCURSIONS AND WORKSHOPS.

In person: Call in at The Gallery Downstairs, Yorke Street, Burnley.

Opening Hours: Monday - Saturday 10am to 5pm
except Thursday 1pm to 5pm

By telephone: Ring 0282 421986/429513

Credit card bookings: Be sure of your tickets. You can book by credit card either by calling in or by telephone. All Access, Eurocard, Mastercard and Visa cards are accepted.

By post: Please enclose an S.A.E. and send your bookings to: FREEPOST BU 874, Burnley, Lancs (no stamp required). Please make cheques payable to MPA

Concessions: Concessionary rates are offered to our members, those in full - time education, unemployed people, senior citizens, registered disabled people and members of Bury Metropolitan.

Group reductions: Buy ten tickets and you will receive one extra absolutely free.

SAVE MONEY AS A MEMBER

Becoming a member of MPA is easy, cheap and could save you money. What do members get?

- Cheap tickets at most MPA events.
- 5% discount on anything bought in the gallery by cheque or cash.
- The chance to borrow our theatre equipment, children's play inflatables and other equipment.
- Personal invitations to Gallery openings.

All this for £9 annual membership and just £4 for students, the unwaged and senior citizens.

Becoming a member is simple. Either drop in during office hours or write to us for a membership form. Once we get the form back with your payment you become a member immediately.

BUY YOUR TICKETS LOCALLY

Mid Pennine Arts tickets are available from:

ACCRRINGTON	The Information Shop, 3 Abbey Street Hyndburn Leisure, Gothic House, St. James Street
BACUP	Public Library, St. James Square First Steps (Business Consultants), Fiscal House, 27 St. James Street
BARNOLDSWICK	Tourist Information, Fernlea Avenue
BLACKBURN	Althams Travel Services, 12 Ainsworth Street
BURY	Metro Arts, Derby Hall, Market Street
CLITHEROE	Althams Travel Services, 20 King Street Tourist Information Centre, Church Walk
COLNE	Althams Travel Services, 13 Albert Road Pendle Leisure Services, Bank House, 61 Albert Road
HASLINGDEN	Public Library, Deardengate
HEBDEN BRIDGE	Tourist Information Centre, 1 Bridgegate
NELSON	Althams Travel Services, 1 Scotland Road Tourist Information Centre, 20 Scotland Road
RAWTENSTALL	Central Library, Queens Square Tourist Information Centre, 41 - 45 Kay Street
TODMORDEN	Althams Travel Services, 15 Halifax Road Bear Wholefoods, 29 Rochdale Road

ROSSFEST '93

Rossendale's Community Festival returns to the valley for a week of festive fun, and Mid Pennine Arts contributes to an exciting range of events.

GESTURES DANCE COMPANY present *'The Next Step'*

Accrington and Rossendale College, Rawtenstall
Thursday 29 April 7.30pm. Admission £4 and £2.50 concessions
With this programme Gestures are set to prove that dance is an art form accessible to all. 'The Next Step' is a challenging, lively and innovative new work by leading choreographers exploring memories, emotions and experiences for a wide-ranging audience. Guaranteed to inspire and excite. It includes an original music score by Manchester cult band 'Durutti Column'.
Presented in association with Accrington and Rossendale College and supported by North West Arts Board.

URDU MUSHAIRA

Public Library, Deardengate, Haslingden
Friday 30 April, 7.30pm. Admission £1
Rossfest breaks new ground with Haslingden's first Urdu poetry evening. This informal event features guest poets from throughout the North West and West Yorkshire. All Welcome.
Presented in association with Rossendale Islamic Heritage Society.

WOMEN'S DAY

Rossendale Groundwork Trust, New Hall Hey, Rawtenstall
Saturday 1 May 10am - 4pm
Fancy learning to dance, write, make prints or make music? Come along to Groundwork and spend a while with women artists developing your secret talents. All the workshops are free and you can sample whatever you like. Men are admitted to Groundwork but these activities are for women only.

Asian Dance Workshop (10.30am - 11.30am). **Bharata Natyam** - this classical South Indian dance is one of the oldest dance forms in the world. Originally only performed by women it skillfully combines the three most important aspects of dance; mood, melody and timing.

Creative Writing (10am - 12.15pm and 1 - 3pm). Experienced Rochdale writer, Anne Caldwell, gives advice, guidance and encouragement.

Print Making Join artist Jill Blackhurst and you can contribute as she produces a large scale art work throughout the day.

Gestures Dance (11.45 am - 1pm). This dynamic young Manchester Company offer a session exploring the themes of their current show.

Sounding Out Singer/Songwriters Claire Mooney and Emma Jarman share their skills in a session that continues throughout the day.

Living by Numbers -

performed by Louise Jones
3pm. All Tickets £1

This one woman show is a quirky, beautifully executed comedy. In this funny yet poignant performance the audience are drawn into the ever-shrinking world of a woman obsessed with order, symmetry and time-keeping.



LIVE ENTERTAINMENT

WORLDBEAT PARTY with
Inner Sense Percussion Orchestra
Haslingden Public Hall.
Saturday 1 May 8pm.

Admission £3 and £2 concessions
Dance Party Night with Manchester's
gigantic 10 piece rhythm machine. The
Inner Sense sound is based on Latin
rhythms and Brazilian carnival samba
with an undercurrent of African drumming and overlaid with storming jazz solos.
Support from the Inner Sense workshop band.



BLUEGRASS MADNESS with **Generation Gap**

Leisure Hall, Bacup
Sunday 2 May 8.30pm. All tickets £3
A day of feverish, finger picking activity for connoisseurs and newcomers
culminating in this concert. The Leeds based Generation Gap have tight sound
and strong vocal harmonies. They offer a fine blend of traditional and modern
material, whether playing a fast hard driving number, a gospel quartet, or soft
slow ballad. Supported by **Highly Strung** this is Bluegrass at its best.
Enthusiasts ring for details of workshops and lunchtime sessions.

ROSSFEST STREET FAIR

Bank Street, Rawtenstall
Monday 3 May
Rawtenstall takes to the streets as Rossfest climaxes with stalls, sideshows and
a succession of outstanding performers. Marvel at the circus skills of 'Pratikle
Peaces', do the samba with Inner Sense Percussion Orchestra and see if you
can spot the unique street sculpture of Other People's Shoes.
*Rossfest '93 is supported by Rossendale Borough Council, Mid Pennine Arts,
Lancashire County Council, North West Arts Board and Northern Rock Building
Society.*

FAMILY FUN DAYS

BURNLEY MAY DAY FESTIVAL

Towneley Park, Burnley
Monday 3 May
Mid Pennine joins Burnley's big day in
the park with the cabaret circus of the
Grand Theatre of Lemmings. The
'Cannon Ball Show' catapults you into
an hilarious world of stunts, magic and
illusion. This show is festooned with
zany inventions and hilarious twists which are guaranteed to amaze and astound.



TODMORDEN CARNIVAL

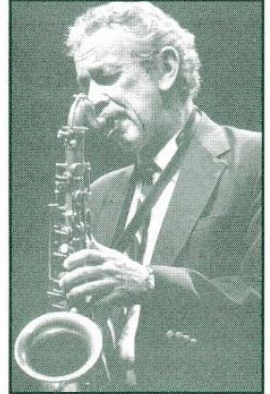
Saturday 29 May. Parade starts at 2pm.
Mid Pennine presents the Phoenix New Orleans Parade Band. On the streets
and on the park, this vibrant Bradford ensemble will set hands clapping and toes
tapping with ragtime, swing and standards.

JAZZ AT THE BLUE NOTE

SPIKE ROBINSON

Blue Note Club, Todmorden
Thursday 22 April 8pm.

Admission £4 and £2.50 concessions.
Known around the world for his beautifully
modulated, melodic and swinging tenor saxophone,
the Wisconsin born Spike (pictured right) plays at
the Blue Note with the Chris Holmes Trio.



ED JONES QUARTET

Blue Note Club, Todmorden
Thursday 27 May 8pm.

Admission £4 and £2.50 concessions.
One of Britain's most exciting and talented young
saxophonists, Ed possesses a highly distinctive,
passionate, melodic saxophone voice. This quartet
includes some of the country's leading musicians, Jonathan Gee (piano), Wayne
Batchelor (double bass) and the South African drummer Brian Abrahams.
Presented in association with the Blue Note Club

SOUL NIGHT

SOULFINGER - Blue Note Club, Burnley Rd, Todmorden

Friday 7 May 8pm. Admission £4 and £2.50
Northern soul for the connoisseur and a non - stop dance party for hungry feet.
The seven - piece Soulfinger are hot news around the Manchester venues, and
come to Todmorden for a Greenpeace special. Plus DJ Brian and late bar.
In association with Todmorden Greenpeace Support Group.

MUSIC FOR SPRINGTIME

CORDIAL COMPANY present **"Grand Tour"**

Town Hall, Accrington
Wednesday 12 May 7.30pm. Admission £4 and £2.50 concessions
Join this excellent ensemble, based at the RNCM, for the chance to be
transported to exotic places on a 'Grand Tour' as they present an evening of
Bizet, Offenbach and Gilbert and Sullivan to name a few - together with the words
and humour of Noel Coward, Oscar Wilde, Shakespeare even Miss Piggy!

THEATRE

FREELANCE THEATRE COMPANY present **"Two Gentlemen of Verona"**

Civic Theatre, Oswaldtwistle
Thursday 20 May 7.30pm. Admission £4 and £2.50 concessions
Shakespeare's popular comedy follows the fortunes and failings of young lovers
and their bawdy servants in a journey of romance from Verona to Milan. Its
delightful blend of poetic lyricism and comic satire receives an articulate and
imaginative treatment from this London company which will challenge and
entertain.

I N M E N T

DELICIOUSLY DIFFERENT

10 - 22 May at The Gallery Downstairs (except where stated)
 Don't book a holiday in mid - May if you have any interest in the future of live performances. This festival fortnight is touring the North West with six tempting live events that are ... Deliciously Different. From a Garden Party with a difference through 'puppet politics at its most powerful' to a sneak preview from the mighty Welfare State, this is two weeks that are bound to stimulate and amaze. As the festival brochure says, suck it and see! Artists appearing over two weeks include George and Leonard, Robin Blackledge, Manchester puppet artists Doo Cot, the charismatic Richard Layzell, Triangle and Welfare State International.
Full details overleaf (see The Gallery Downstairs)



ASIAN ARTS

EID MELA

Oakenhead Day Centre, Rawtenstall
 Sunday 28 March 2 - 10pm. Admission £1 and 50p concessions
 This Asian festival celebrates the end of Ramadan with bhangra dancing, folk and film music, stories and puppets, magic shows, demonstrations, food drink and children's entertainment. All welcome.
Presented by the Asian Arts Forum with support from Rossendale Borough Council, Lancashire Arts Unit and North West Arts Board.

BANNERS FOR EID

For the summer Eid festival, Asian women's groups around East Lancashire will be working with a textile artist during May to make original wall - hangings. Interested? Contact Minty Donald on 0282 421986

DRAMA FOR YOUNG PEOPLE

From April, Community Arts Workshop of Manchester will be running drama training sessions at Nelson Youth Centre with Asian youth workers and local young people. Further information from Minty on the above number.

DOWN YOUR WAY

Got a bright idea for a project in your neighbourhood? Mid Pennine would like to hear from you. From April we have a new fund available offering small grants for creative initiatives in small communities.

To qualify for a grant, your idea must be proposed by a local community group, it should be creative, innovative (but not necessarily arty or avant-garde) and it should have some lasting effect on your community.

If it meets these few conditions, your project can take any form from rustic crafts to video. Want to find out more? Contact Melanie Diggle on 0282 421986. Surprise us!
Supported by Calouste Gulbenkian Foundation



WOMENS ART PROJECT

In Great Harwood, local artist Elizabeth Rayton is working with womens groups on an ambitious new project. The end result - a large scale wall hanging for thier Community Centre which will be on display from early July.

AT A GLANCE

DATE	EVENT	VENUE
APRIL		
Thurs 8 - 13	Cartoons by Ray Lowry	Gallery Downstairs
Sat 17	Urdu Calligraphy Workshop	Nelson Civic Theatre
Thurs 22	Jazz: Spike Robinson	Todmorden
Thurs 29	Gestures Dance Company	Rawtenstall
Fri 30	Mushaira - Poetry Reading	Haslingden Library
From Sat 17	Exhibition: Deliciously Different	Gallery Downstairs
MAY		
To Sat 22	Exhibition: Deliciously Different	Gallery Downstairs
Sat 1	Feltmaking Demonstration	Gallery Downstairs
Sat 1	Womens Day	Rossendale Groundwork
Sat 1	Inner Sense Percussion	Haslingden Public Hall
Sun 2	Blue Grass Madness	Bacup
Mon3	Rosfest Street Fair	Rawtenstall
Mon 3	Burnley May Day	Towneley Hall
Fri 7	Soulfinger	Todmorden
Sat 8	Stained Glass Workshop	Crawshawbooth
Mon 10	George & Leonard's Garden Party	Burnley
Wed 12	Cordial Company	Accrington Town Hall
Thurs 13	Epitaph	Gallery Downstairs
Fri 14 - 15	Doo Cot Puppets	Gallery Downstairs
Mon 17	Richard Layzell	Gallery Downstairs
Wed 19	Married Blitz	Gallery Downstairs
Thurs 20	Freelance Theatre Company	Oswaldtwistle
Fri 21	Welfare State	Gallery Downstairs
Thurs 27	Ed Jones Quartet	Todmorden
Sat 29	Todmorden Carnival	Todmorden
From Sat 29	The Print Show	Gallery Downstairs

COMING IN JUNE

Eid Mela in Nelson, a week of special events for Accrington Carnival (including the chance to sing HMS Pinafore with professionals!), the RNCM Big Band, Rossendale Carnival with the Happy End and lots more...

VISUAL ARTS

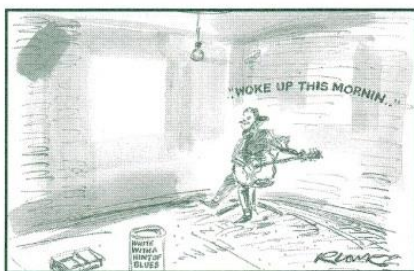
THE GALLERY DOWNSTAIRS

9th-13th APRIL

'WOKE UP THIS MORNIN' -

Cartoons by **Ray Lowry**

For three decades the absurdities of the music business have inspired the wry observations and sardonic drawings which characterize Ray's cartoons. His work has regularly appeared in publications such as New Musical Express, Punch and Private Eye. In this exhibition Ray turns his attention to the Blues and 'Woke up this Mornin' is a perceptive and relevant musing. A further unique feature of this week in The Gallery promises to be 'The Wall'. You are invited to come along and display your own cartoon drawing, or if your talent lies in the written word, compose the lyrics for a blues number and share that.



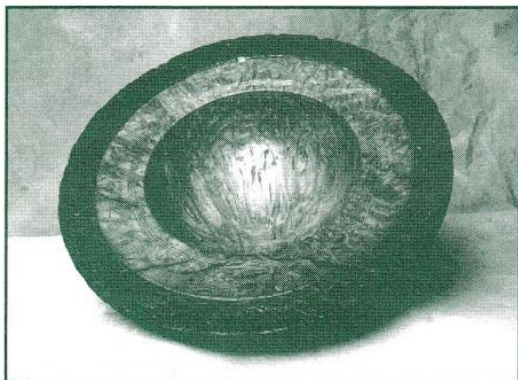
CRAFTS SHOWCASE

WOODTURNING by **Jules Tattersall**

9 April - 22 May

Jules strives to produce work whose simple forms and shapes are at once stimulating yet soothing with their timeless quality. The pieces have texture and balance and where appropriate he uses natural features which give each piece its visual and tactile character.

Conservation concerns are an important consideration in Jules choice of materials, he avoids using endangered or rain - forest timbers, working with homegrown timbers mostly salvaged from trees felled by natural causes. Specializing in pots and bowls he hopes through these pieces to engender an appreciation of the beauty of wood; respect for its importance as a material for our pleasure, but also to its original and most beautiful state: the living forest.



DELICIOUSLY DIFFERENT

A festival of live art work in a wide variety of styles, Deliciously Different is blitzing the North West at five venues from 10th May. Our Burnley dates for events are listed below. These are performers, though, with roots in the visual arts and we showcase their work for three weeks preceding with a multi media exhibition featuring paintings, sculptures, photographs and costume by five artists.

GEORGE AND LEONARD'S GARDEN PARTY

Monday 10 May

8pm at a mystery venue. Admission £3 and £2 concessions

'Guilt' is the subject that these two explore, but they aim to do it in convivial circumstances. You are invited to dress in black and white, bring a bottle of red wine and settle in for a party with a difference.

ROBIN BLACKLEDGE presents *'Epitaph'*

Thursday 13 May 8pm. Admission £3 and £2 concessions

Straight from 'Moviola', the international festival of video, Robin has created a world beyond human existence where spirits pass from one life to another. Epitaph is enigmatic and voyeuristic.

DOO COT THEATRE OF OBJECTS AND FIGURES

Saturday 15 May 10am - 5pm. Admission free

Doo Cot make puppets for grown-ups, and create an unstable world where those in power pull the strings of the innocent ... All Saturday you can wander into an environment populated by a host of shadowy figures, with an original soundtrack and a short performance at regular intervals (11am, 2pm, 4pm). Not suitable for children under 11.

'NO HAMBURGER UNIFORM FOR ME' by **Richard Layzell**

Monday 17 May 8pm. Admission £3 and £2 concessions

'Subtle, thought provoking and very funny' (Time Out), 'Charismatic performer' (Observer), 'Go see him' (City Limits), Richard Layzell has been making audiences around the world think and laugh for 15 years. This new performance is about urban living, the media ... and talking back to the TV.

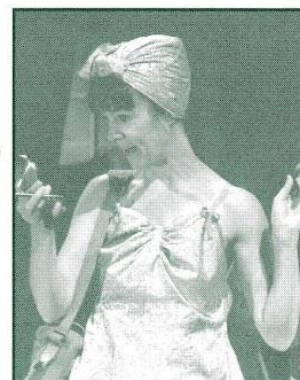
TRIANGLE present *'Married Blitz'*

Wednesday 19 May 8pm.

Admission £3 and £2 concessions

A photograph burns and a woman remembers the war in this international award - winning show. 'Married Blitz' evokes the real memories of women who lived, worked and loved during World War Two. 'Provokes tears as easily as laughter, enrapturing all ages from seven to seventy' (What's On). The show is followed by an open discussion.

Triangle also offer a workshop on their visual arts and technical sources at 2pm. Phone Mid Pennine to reserve your place.



AND CRAFTS

17 APRIL - 22 MAY

WELFARE STATE INTERNATIONAL present 'Hollow Ring'

Friday 21 May 8pm. Admission £3 and £2 concessions

The global brand leaders in celebratory spectacle make a rare return to their old base with a sneak preview of a work in progress. 'Hollow Ring' is a series of linked stories told by John Fox and Peter Moser with words, music, puppets, lanterns and special effects. Book early!

See overleaf for details of the exhibition featuring a variety of these artists.

Deliciously Different is promoted by North West Arts Board with support from the Arts Council of Great Britain.

JEWELLERY SHOP

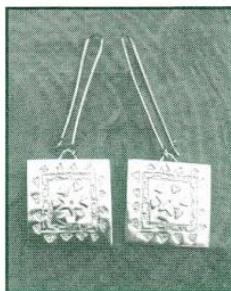
APRIL

Adele Taylor

Using techniques of acid etching, inlay and pressing, Adele emphasises the contrasting colours of metal through texture and surface pattern, influenced by her interest in fossils and the marks on standing stones.

Marlene McKibbin

Delicious shades of chocolate, ochre, ash-green and raspberry are combined in these tempting earrings and bangles from Marlene's new collection of acrylic, rubber and silver jewellery.



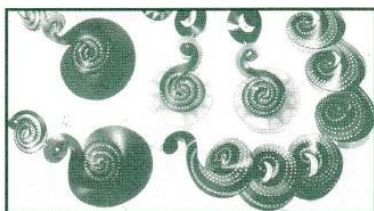
MAY

Timothy

Timothy's body objects are characterised by articulated movements punctuated with slogans. Managing to combine a balance between figurative and abstract this range of steel and brass jewellery cannot fail to charm, even 'The Oldest Swinger in Town'.

Karen Whiterod

A curiosity about the qualities of nylon has led to the creation of this jewellery. This delicate fabric is used to stunning effect in the production of this intriguing collection, figured with resist-dyed translucent patterns and enhanced with gold leaf.



29th MAY - 3rd JULY

THE PRINT SHOW

The versatile and flexible art of the printmaker is displayed in this exhibition. Offering a rich diversity of themes and styles all the works have individual qualities of tone and texture. All the works will be offered for sale.

DEMONSTRATIONS/WORKSHOPS

URDU CALLIGRAPHY COURSE with Bashir Ansari

Saturday 17 April, 10am - 4pm, Nelson Civic Theatre

This one day workshop will explore the history and development of Arabic and Persian lettering and its place in Asian art. Participants will learn to recognise the different styles and receive tuition in writing script. The entire day will be conducted in Urdu. Registration is £3 maximum number 15, early booking is advisable. For details ring 0282 421986.

PRINTMAKER - Jill Blackhurst

Saturday 1 May, Rossendale Groundwork. Free admission

As part of 'Women's Day', artist Jill Blackhurst will be producing a large scale art work at Rossendale Groundwork. Jill will demonstrate the technique of mono-printing, her present specialism. Throughout the day there will be opportunities to contribute to the print. Much of her work derives its influence from pagan and religious sources and this piece will be on the theme of Celtic Traditions.

FELTMAKER - Lene Nielson

Saturday 1 May, The Gallery Downstairs. Free admission

Her fascination with wool brought Danish feltmaker, Lene Nielson, to this country in search of the many and varied types of wool readily available here. Since then she has created many unusual combinations of fibreblends to produce original hangings, hats and jewellery in subtle shades. She will be available to talk about her work and demonstrate the new technique she has developed which eliminates much of the initial effort involved in feltmaking.

STAINED GLASS WORKSHOP - Martha Henry

Sat 8 May 10am - 4pm. Sun 9 May 2 - 5pm, Crawshawbooth Community Centre.

The strength and directness of glass and its ability to influence its setting are the prime motivators in Martha's journey of discovery with this art form. Excited by the many facets of working with coloured light she aims to share this enjoyment with the participants in her workshops. Registration is £12.50 which covers both days. All materials will be provided. Maximum number 12 so early booking is advisable.

Contact Sheenagh or Julian on 0282 421986.

INSET TRAINING

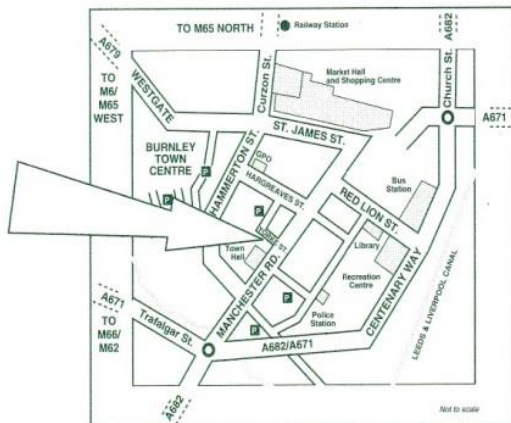
Inset sessions for both primary and secondary teachers are regularly available in The Gallery Downstairs. Sessions are organised to meet particular needs and interests, with specific reference to the requirements of each key stage of the National Curriculum.

WALLSPACE

Why not have your own art exhibition delivered and installed absolutely free? **WallSpace** is a picture loan service offering small scale collections of original artworks by exceptional British artists. The work is available to local businesses and meeting places and is adaptable to many kinds of space - from salon to surgery, cafe to canteen - almost anywhere there's space on a wall. Make life a little brighter and more interesting for your staff, your customers and yourself. For further information on Inset or WallSpace contact Julian on 0282 421986

The GALLERY Downstairs

YORKE STREET, BURNLEY, BB11 1HD. TELEPHONE: 0282 421986/429513



ADMISSION IS FREE

OPENING HOURS

Monday - Saturday 10am to 5pm
 except Thursday 1pm to 5pm
 Thursday 10am to 1pm - educational groups only.
 Please book in advance

DISABLED PEOPLE ARE WELCOME

Wheelchair users can gain access via our ramp. Guide dogs are welcome. If you need help you only have to ask. We have adapted toilet facilities.



TO ALL TEACHERS AND GROUP LEADERS

On Thursday mornings your class or group can work or enjoy a lesson in The Gallery Downstairs without interruption, as the Gallery is reserved exclusively for educational purposes until 1pm. Please telephone Julian Pearce on 0282 421986 for further information, or to book your time.

Mid Pennine Arts aims to increase the enjoyment and understanding of contemporary visual arts, and we offer facilities for practical workshops, study sessions, talks and seminars to schools and colleges and to other interested groups. Let us know what you would like to learn about.



Mid Pennine Arts gratefully acknowledges the financial assistance of the Borough Councils of Burnley, Hyndburn, Pendle and Rossendale, the Township of Todmorden, North West Arts Board, Yorkshire and Humberside Arts and Lancashire County Council.

The information in this brochure is correct at the time of going to press but MPA reserves the right to cancel or amend the programme due to unforeseen circumstances. The work of Mid Pennine Arts is supported by the Corporate Membership of Co-operative Retail Services Ltd. and ACME Refrigeration and by the Membership of 64 non-profit making local organisations.

Design and Print by Hartley & Hartley Ltd. Brunswick House, Brunswick St., Nelson, Lancs. BB9 0HQ. Telephone: 0282 611331. Facsimile: 0282 611333. (14283)