
**MID PENNINE
ARTS** 



C-Charge

AUGUST & SEPTEMBER

1993

HOW TO BOOK

TICKETS FOR PERFORMANCES, EXCURSIONS AND WORKSHOPS.

In person: Call in at The Gallery Downstairs, Yorke Street, Burnley.

Opening Hours: Monday - Saturday 10am to 5pm
except Thursday 1pm to 5pm

By telephone: Ring 0282 421986/429513

Credit card bookings: Be sure of your tickets. You can book by credit card either by calling in or by telephone. All Access, Eurocard, Mastercard and Visa cards are accepted.

By post: Please enclose an S.A.E. and send your bookings to: FREEPOST BU 874, Burnley, Lancs BB11 1BR (no stamp required). Please make cheques payable to MPA

Concessions: Concessionary rates are offered to our members, those in full-time education, unemployed people, senior citizens, registered disabled people and members of the Met Arts Centre, Bury.

Group reductions: Buy ten tickets and you will receive one extra absolutely free.

SAVE MONEY AS A MEMBER

Becoming a member of MPA is easy, cheap and could save you money. What do members get?

- Cheap tickets at most MPA events.
- 5% discount on anything bought in the gallery by cheque or cash.
- The chance to borrow our theatre equipment, children's play inflatables and other equipment.
- Personal invitations to Gallery openings.

All this for **£9** annual membership and just **£4** for students, the unwaged and senior citizens.

Becoming a member is simple. Either drop in during office hours or write to us for a membership form. Once we get the form back with your payment you become a member immediately.

BUY YOUR TICKETS LOCALLY

Mid Pennine Arts tickets are available from:

ACCRINGTON	The Information Shop, 3 Abbey Street Hyndburn Leisure, Gothic House, St. James Street
BACUP	Public Library, St. James Square First Steps (Business Consultants), Fiscal House, 27 St. James Street
BARNOLDSWICK	Tourist Information, Fernlea Avenue
BLACKBURN	Althams Travel Services, 12 Ainsworth Street
BURY	The Met, Derby Hall, Market Street
CLITHEROE	Althams Travel Services, 20 King Street Tourist Information Centre, Church Walk
COLNE	Althams Travel Services, 13 Albert Road Pendle Leisure Services, Bank House, 61 Albert Road
HASLINGDEN	Public Library, Deardengate
HEBDEN BRIDGE	Tourist Information Centre, 1 Bridgegate
NELSON	Althams Travel Services, 1 Scotland Road Tourist Information Centre, 20 Scotland Road
RAWTENSTALL	Central Library, Queens Square Tourist Information Centre, 41 - 45 Kay Street
TODMORDEN	Althams Travel Services, 15 Halifax Road Bear Wholefoods, 29 Rochdale Road

RUSSIAN PUPPET THEATRE

CAPRICE present 'IVAN - a PEASANT SON'

Vale Centre, Cornholme.

- Wednesday 4 August 7pm

Community Centre, Brierfield

- Thursday 5 August 7pm

Admission **£3.50/£1.50**

concessions

The high standards of the Russian Puppet Academy are maintained in this touring company. Currently touring throughout Europe, we are delighted to welcome them to two venues in the Mid Pennine area.

These wonderful puppets are modelled on traditional Russian toys and are a third human size. 'Ivan - a Peasant Son' is a colourful musical based on a Russian fairy tale for all the family. Each performance will be followed by a workshop when you will have the chance to go behind the scenes, try out the puppets and ask questions. Come and enjoy something out of the ordinary.

In association with Red Water Arts



SUMMER WORLDBEAT

RATTLE 'n' REEL

Public Hall, Haslingden

- Saturday 28 August 8pm

Admission **£4 and £2.50 concessions**

Worldbeat, Haslingden's Saturday night dance series, goes Irish

One of Manchester's most exciting bands, this five piece roots band has just two speeds, fast and very fast. The spearhead of the new wave of Celtic Rock, they play souped - up traditional Irish music, reels, jigs and a blistering Celtic Stomp. The band are joining us mid way through a hectic Summer tour of festivals in Europe. They have previously headlined the length and breadth of the UK including the Liverpool and Gosport festivals. Their latest album was voted in the top 10 Albums of the Year in 'Folk Roots' magazine.

The Autumn Worldbeat series starts on Saturday 18th September.

In association with Rossendale Borough Council

DANCE IN RAWTENSTALL



FISHPOOL DANCE THEATRE present JEWEL

Accrington and Rossendale College, Rawtenstall

- Thursday 30 September 7.30pm

Admission **£4.50 and £3 concessions**

This original new dance piece 'Jewel' combines energy, unique style and wit. Three contrasting sections of dance explore the sometimes humorous, sometimes dangerous gap that lies between giving and receiving. The work also features an original music score. Fishpool are a new Liverpool - based

company featuring former members of Motionhouse and The Cholmondeleys.

Presented in association with Accrington & Rossendale College. Supported by NWAB.

L I V E E N T E R T A

7 DAYS OF SOUND

7 days in August are devoted to a celebration of the local Accrington music scene. A week which includes street bands, workshops, buskers, live bands etc, etc culminates on Sunday in SOUND '93 at Oak Hill Park. For more details of this and the week's programme, read on.....

BUSKING COMPETITION

- **Tuesday 10, Friday 13, Saturday 14 August**

From 12 noon - 4pm each day

Buskers from the local area will be gathering on street corners in and around the town centre of Accrington to amuse and entertain. On Saturday the final will take place on Broadway. Guaranteed to brighten up your trips into town.

BRASSHOPPERS WORKSHOPS

New Era Youth Centre

- **Thursday 12 /Friday 13 August**

10.30 am - 3.30pm

The energetic Brasshoppers will shape a group of aspiring local musicians into a celebratory brass and percussion section to samba with the band themselves on the big day of SOUND '93. Places limited to 20. If you are interested and have a basic ability to play brass (and have your own instrument) or play percussion please ring Parvinder on 0254 237690.



SOUND BITES

Town Hall, Accrington

- **Wednesday 11 August 7.30pm**

Admission £2 in advance £3 on door

A variety of local bands playing everything from rock to rap will feature in this session, designed as a taster for the big day.



C-Charge

S O U N D ' 9 3

The Bandstand, Oak Hill Park, Accrington

- **Sunday 15 August 12 noon - 7pm**

Admission Free

Building on last year's event, attended by three thousand people, Sound '93 presents a full day of live music featuring the best local musicians and headlined by the immensely popular Manchester reggae outfit C- Charge. This free music event has something for the whole family. There's exciting carnival samba from the Brasshoppers, stalls, children's rides, entertainments and workshops, food of all descriptions, stalls, and fun, fun, fun.

C - CHARGE

Manchester's finest reggae rockers make a welcome return with one of the best live acts around. Firmly entrenched in roots reggae, this Mancunian sound system is VERSATILE. 'Music at its best, in an atmosphere that lifts the spirits, powered by the rhythm and the beat.' Plus five East Lancashire bands

- *The Monkee Talks* • *The Mirrors* • *Bubble Burst*
- *PURE GENIUS* • *Walter Mitty's Head* (+ 1 to confirm)

BRASSHOPPERS

This dynamic 8 piece band produces a flamboyant mix of brass and dance rhythms backed by drums and percussion. From the salsa sounds of Latin America to Stateside R'n'B and funk, the Brasshoppers create a fiesta of world musics. They launch Accrington's third year of Sound with a glorious samba featuring local participants, then take the stage for a blistering amplified set.

FREE FESTIVALS

GREENPEACE DAY ON THE GREEN

Centre Vale Park, Todmorden

- **Saturday 7 August 12 noon - 6pm.**

Admission Free - donations to Todmorden Greenpeace Support Group.

At the heart of Todmorden's beautiful Centre Vale Park is 'Day on the Green'. With music from five live bands, featuring sounds from Indie through funk to jazz, plus stalls, entertainment and fun galore.

'The Amazing Flaming Hot Dog Show' is a family spectacular designed to amaze and entertain. A hot dog stand like you've never seen before, staggering effects, fireworks, comic performance, live original music and the biggest sausage in the world!



PENDLE YOUTH AND COMMUNITY FESTIVAL

Town Centre, Nelson

- **Saturday 14 August 12 noon - 8.30pm**

This is the third festival for young people in Nelson and takes over the town centre precinct for a day of fun. Through the afternoon there will be an emphasis on family entertainment with stalls and a variety of street entertainers. The evening is devoted to music with local bands playing everything from hard rock to bhangra.

For further information please telephone Derek Ingham or George Davidson on 0282 862850

I N M E N T

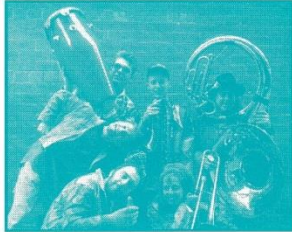
FAMILY FUN DAYS

BRIERFIELD GALA

Bent Head Playing Fields, Brierfield

• **Saturday 14 August 12 noon - 4.30pm**

The parade moves off at noon and at the heart of Brierfield's Gala is a group of jumping, dancing musicians, 'The Real Macaws'. Playing sousaphone and saxophone, trumpet and trombone, percussion and piano accordion, voices and drums, they explode in a variety of styles with an exquisite lack of sophistication!



ST MONDAY CELEBRATION

Weavers Triangle Visitor Centre, Burnley

• **Monday 30 August.**

It's festival day at the Canal Wharf on Manchester Road, and the celebrations will include many and varied stalls, attractions and entertainers. Jukalo the Juggler is a performer of amazing skill, specialising in high pole and wine bottle juggling. He has previously performed at Wembley Stadium before a crowd of 50000, and is set to delight visitors to the Triangle in Burnley.

In association with the Friends of The Weavers Triangle

COLNE CAMERATA SERIES

Municipal Hall, Colne

Following last season's highly successful series, Manchester's Camerata returns to Colne in October with more concert dates for your diary. With easy parking, bar and refreshments and an opportunity to enjoy pre-concert talks the Colne Orchestral Series is convenient, comfortable and very reasonably priced. Our 'First Timer Offer' gives you the opportunity to see all four concerts for just **£16** (this offer only applies to those of you who have not held season tickets before). Members of Mid Pennine Arts can claim concessionary ticket prices.

Balcony Season Ticket for all four concerts £24/ £20 concs

Stalls Season Ticket for all four concerts £20/£16 concs

Balcony for one concert only £7/£6 concs

Stalls for one concert £6/£5 concs

'First Timer Offer' for all four concerts £16 (stalls seating)

DIARY DATES

Thursday 21 October 1993

Thursday 16 December 1993

Thursday 3 February 1994

Thursday 10 March 1994

All concerts start at 7.30pm and pre-concert talks begin at 6.45pm.

To book your tickets in advance call 0282 421986. Advanced booking is

advised and the box office opens on Monday 16 August.

Previous season ticket holders, please note priority booking is available from Monday 19 July.

Presented in association with Pendle Borough Council

AT A GLANCE

Date	Event	Venue
Sat 10 July to 14 August	Martin Nash: Constructions	The Gallery Downstairs Todmorden

AUGUST

Wed 4	Caprice. Russian Puppet Company	Vale Centre, Cornholme
Thur 5	Caprice. Russian Puppet Company	Community Centre, Brierfield
Sat 7	Day on The Green	Centre Vale Park, Tod
Sat 7	Shirley Brinsley: Collages	The Gallery Downstairs
Sat 7 to Sep 5	Hodgkin - Sonntag	Pendle Arts Gallery
Mon 9 to Sun 15	Seven Days of Sound	Accrington
Sat 14	Pendle Youth and Community festival	Nelson Town Centre
Sat 14	The Real Macaws	Brierfield Gala
Sun 15	Sound '93	Oak Hill Park, Accrington
Sat 21	Up The Wall	The Gallery Downstairs
Sat 28	Liz Rayton: Textiles	The Gallery Downstairs
Sat 28	Worldbeat: Rattle n' Reel	Haslingden

SEPTEMBER

Sat 4 to Oct 2	Women & Wood	The Gallery Downstairs
Sat 11	Claire Guest: Sculptures	The Gallery Downstairs
Sat 18	Worldbeat	Haslingden
Sat 18 to Sun 19	Open Photography Exhibition	Town Hall, Todmorden
Thurs 30	Fishpool Dance Theatre	Acc & Ross College, Rawtenstall

VISUAL ARTS

THE GALLERY DOWNSTAIRS

CONSTRUCTIONS *10 July - 14 August*

CONSTRUCTIONS by MARTIN NASH

Work of absorbing fascination involved with the excitement of discovery from Manchester based artist Martin Nash. Using mostly found materials which bear the marks of usage and the effects of weather and time, he uses their inherent qualities to transform them, giving them a new value which is open to different interpretations. In the making each work is a journey of discovery, thought - provoking and deeply evocative.

JEWELLERY SHOP

• 10 July - 14 August

Maria Rivans

Using new techniques, Maria makes earrings, brooches and hair decorations featuring strong unusual designs in copper, brass and aluminium.

Debra Allman

Sophisticated designs and sculptural shapes create feelings of elegance in this classic silver and gold jewellery.

Charlotte Farman

Medieval shields and spears influence the shapes and surface pattern in this range of textural silver jewellery, incorporating semi-precious stones set in 9ct gold.

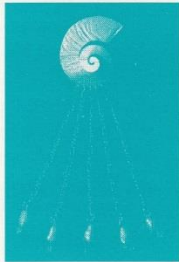
• 21 August - 2 October

Lindsey Deans

Fluid movement influenced by the structure of natural forms characterises Lindsey's designs. She etches, pierces and applies various metals to create pattern and texture in her silver jewellery.

Linda Lewin

Linda's bold pieces of stone set rings and earrings provide striking impact and contrast with the delicate forms of coiled and wrapped metal which feature in her nautilus brooches and silver neck piece.



WOMEN & WOOD *4 September - 2 October*



This exhibition brings together a wealth of new work by ten women working in wood. It represents some of the best work currently being produced in this country, deriving inspiration from the past whilst embracing new ideas and innovative ways of working. From the traditional and functional willow baskets made by Jenny Crisp, to the humorous imagery of Edessia Aghajanian's automata, this show offers a lively cross section of ideas and techniques. A new appreciation and awareness of wood, the strength, diversity of colour and grain, and the unpredictability of its nature is set to excite and inspire.

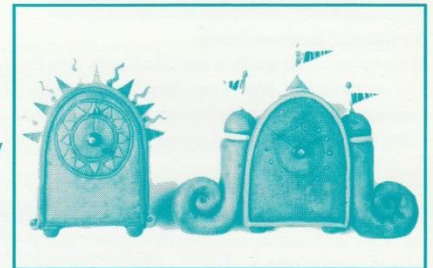
CRAFTS

SOMETHING MORE THAN PAPER

• 10 July - 14 August

Papier Mache by Juliet Pearce

The delicacy of the decoration on these papier mache pieces by Julliete is a delight to the eye. Vessels, jewellery, elaborate functional furniture for interiors are all given the very special treatment which produces objects in vivid vibrant colours.



TASSELS AND BANNERS

• 22 August - 2 October

Ceramics by Susie Lear

There is a strong feeling of the whimsical in Susie Lear's work. From the jaunty tassels she hangs from her decorative mirrors to the copper banners declaring 'Clock' above her amusing yet functional time pieces. Bottles stand like old men having a natter. Like her work her influences have many different elements from the sea to the architecture of India.

AND CRAFTS

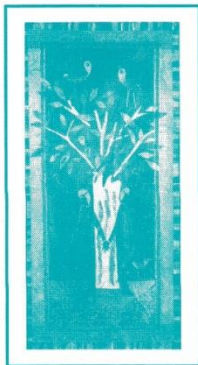
ARTISTS IN THE GALLERY

COLLAGES with Shirley Brinsley

● **Saturday 7 August**

10pm - 4pm. The Gallery Downstairs. Free Admission

Shirley incorporates many different papers and materials in her vibrant visual collages. Recycled newsprint and packaging combined with sumptuous Asian and Japanese paper to create a wealth of different surface qualities. She will be in the Gallery to talk about her work and demonstrate some of the techniques involved in its creation.



TEXTILES by Liz Rayton

● **Saturday 28 August**

10am - 4pm. The Gallery Downstairs. Free Admission.

Liz has been involved on a long term project with a women's community group (see 'up the wall') and will be in the Gallery to talk about it. Her work is influenced by her 'printed textiles' training and she uses a number of embroidery techniques together with screen printing. She will demonstrate some of these skills during the day.

SCULPTURES - Claire Guest

● **Saturday 11 September**

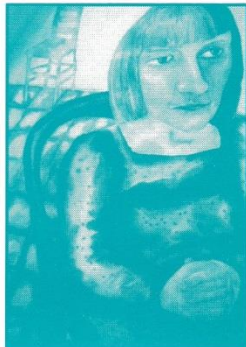
10am - 4pm. The Gallery Downstairs. Free Admission

Using exclusively bog oak, an extremely tough, resilient wood, Claire creates sculptures from one piece which are stark, uncompromising and dramatic. A source of inspiration for her carving is the idiosyncratic character of the crow. The aggression and dominance of the bird's nature is expressed through the wood. Claire works with chisels and gougers, hammering these tools into the wood with a mallet and she will be available to demonstrate the strenuous and physically demanding challenges of her sculptures.

WALLSPACE

Liven up your workspace and offer a talking point to your visitors by borrowing an original collection of artwork for up to six weeks. If your foyer needs a focal point or your office an uplift then WallSpace is designed with your premises in mind. Paintings, drawings and prints by talented Northern artists are available for the enjoyment of your clients, customers and particularly your workforce. It is simple to arrange and will be delivered and installed by us. All you need is wall.....

For further information and to book this free service telephone Julian or Sheenagh on 0282 421986.



OUT AND ABOUT

THE WAY WE LIVE NOW - Hodgkin - Sonntag

● **9 August - 5 September**

Pendle Arts Gallery, Town Hall, Nelson

The various emotions evoked by the tragedy that is AIDS are the subject of the images created by Howard Hodgkin for Susan Sonntag's text. Sonntag's poignant story, which names neither the illness nor the sufferer, has been acclaimed as a contemporary classic. Hodgkin's works are rich and sensual, and like the text, they express the tragedy without the despair.

A Touring exhibition from the South Bank Centre

OPEN PHOTOGRAPHY

OPEN PHOTOGRAPHY EXHIBITION for Greenpeace

● **18 September - 19 September**

Town Hall, Todmorden. 11am - 4pm

● **1-8 October**

The Information Centre, Todmorden. 11am - 4pm

An exciting new annual exhibition for Todmorden Greenpeace Support Group and Mid Pennine Arts featuring established photographers from around the country and leading local amateurs. With environmental and other fascinating categories this event promises to be well attended. Contact Stefan Hopewell on 0706 816489.

SPECIAL PROJECTS

TEARS BECOME A COLOUR is a mini residency by Chol Theatre on the Longfield Estate in Todmorden, **on Wed 11, Tues 12 and Thurs 13 August.** For further details contact Minty Donald on 0282 421986.

AND YOUR LOCAL PROJECT

Got a bright idea for a project in your neighbourhood? Mid Pennine would like to hear from you. We have a new fund available offering small grants for creative initiatives in small communities. To qualify your idea must be proposed by a local community group, it should be creative, innovative (but not necessarily arty or avant-garde) and it should have some lasting effect on your community. If it meets these few conditions, your project can take any form from rustic crafts to video. Want to find out more? Contact Melanie Diggle on 0282 421986. Surprise us!

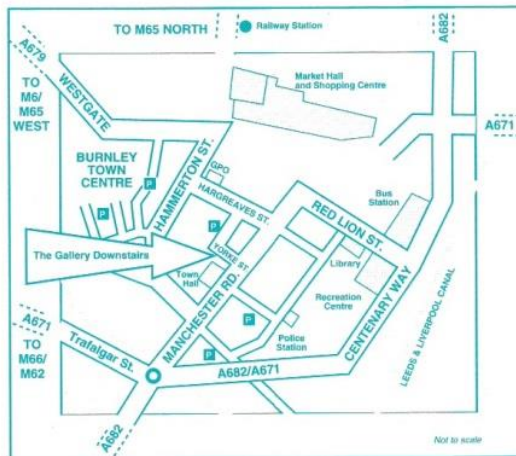
Supported by Calouste Gulbenkian Foundation

VOLUNTEERS

Bored? Time to kill? Energy to burn? Join us and work in the arts in your spare time, and you may never be bored again... We always need help running the Gallery, hanging exhibitions and with events and we would like to hear from you. Call anyone at Mid Pennine on 0282 421986

The GALLERY Downstairs

YORKE STREET, OFF MANCHESTER ROAD, BURNLEY, BB11 1HD. TELEPHONE: 0282 421986/429513



ADMISSION IS FREE

OPENING HOURS

Monday - Saturday 10am to 5pm
 except Thursday 1pm to 5pm
 Thursday 10am to 1pm - educational groups only.
 Please book in advance

DISABLED PEOPLE ARE WELCOME

Wheelchair users can gain access via our ramp. Guide dogs are welcome. If you need help you only have to ask. We have adapted toilet facilities.



TO ALL TEACHERS AND GROUP LEADERS

On Thursday mornings your class or group can work or enjoy a lesson in The Gallery Downstairs without interruption, as the Gallery is reserved exclusively for educational purposes until 1pm. Please telephone Julian Pearce on 0282 421986 for further information, or to book your time.

Mid Pennine Arts aims to increase the enjoyment and understanding of contemporary visual arts, and we offer facilities for practical workshops, study sessions, talks and seminars to schools and colleges and to other interested groups. Let us know what you would like to learn about.



Mid Pennine Arts gratefully acknowledges the financial assistance of the Borough Councils of Burnley, Hyndburn, Pendle and Rossendale, the Township of Todmorden, North West Arts Board, Yorkshire and Humberside Arts and Lancashire County Council.

The information in this brochure is correct at the time of going to press but MPA reserves the right to cancel or amend the programme due to unforeseen circumstances. The work of Mid Pennine Arts is supported by the Corporate Membership of Co-operative Retail Services Ltd. and ACME Refrigeration and by the Membership of 64 non-profit making local organisations. Assisted by BT through Business in the Arts: North West. Design and Print by Hartley & Hartley Ltd. Brunswick House, Brunswick St., Nelson, Lancs. BB9 0HQ. Telephone: 0282 611331. Facsimile: 0282 611333. (14676)