
MID PENNINE ARTS



"No Party Dress," Anita Klein

APRIL & MAY
1994

HOW TO BOOK

TICKETS FOR PERFORMANCES, EXCURSIONS AND WORKSHOPS.

In person: Call in at The Gallery Downstairs, Yorke Street, Burnley.

Opening Hours: Monday - Saturday 10am to 5pm
except Thursday 1pm to 5pm

By telephone: Ring 0282 421986/429513

Credit card bookings: Be sure of your tickets. You can book by credit card either by calling in or by telephone. All Access, Eurocard, Mastercard and Visa cards are accepted.

By post: Please enclose an S.A.E. and send your bookings to: FREEPOST BU 874, Burnley, Lancs BB11 1BR (no stamp required). Please make cheques payable to MPA

Concessions: Concessionary rates are offered to our members, those in full-time education, unemployed people, senior citizens, registered disabled people and members of the Met Arts Centre, Bury.

Group reductions: Buy ten tickets and you will receive one extra absolutely free.

SAVE MONEY AS A MEMBER

Becoming a member of MPA is easy, cheap and could save you money. What do members get?

- Cheap tickets at most MPA events.
- 5% discount on anything bought in the gallery by cheque or cash.
- The chance to borrow our theatre equipment, children's play inflatables and other equipment.
- Personal invitations to Gallery openings.

All this for **£9** annual membership and just **£4** for students, the unwaged and senior citizens.

Becoming a member is simple. Either drop in during office hours or write to us for a membership form. Once we get the form back with your payment you become a member immediately.

BUY YOUR TICKETS LOCALLY

Mid Pennine Arts tickets are available from:

ACCRINGTON	The Information Shop, 3 Abbey Street Hyndburn Leisure, Town Hall
BACUP	Public Library, St. James Square First Steps (Business Consultants), Fiscal House, 27 St. James Street
BARNOLDSWICK	Tourist Information, Fernlea Avenue
BLACKBURN	Althams Travel Services, 12 Ainsworth Street
BURY	The Met, Derby Hall, Market Street
CLITHEROE	Althams Travel Services, 20 King Street Tourist Information Centre, Church Walk
COLNE	Althams Travel Services, 13 Albert Road Pendle Leisure Services, Bank House, 61 Albert Road
HASLINGDEN	Public Library, Deardengate
HEBDEN BRIDGE	Tourist Information Centre, 1 Bridgewater
NELSON	Althams Travel Services, 1 Scotland Road Tourist Information Centre, Town Hall
RAWTENSTALL	Central Library, Queens Square Tourist Information Centre, 41 - 45 Kay Street
TODMORDEN	Althams Travel Services, 15 Halifax Road Bear Wholefoods, 29 Rochdale Road

FAMILY FUN DAYS

BURNLEY CANAL FESTIVAL

Weavers Triangle, Burnley Wharf, Manchester Rd

- **Saturday 2 April 10.30am - 5pm**

Admission Free

To celebrate this special festival Mid Pennine joins in the fun with Mimika and their 'Sideshow'. From a beautifully painted booth on wheels the company introduce Eric the Flea, Eric the elephant and Eric the world's only mind-reading crocodile. An extravaganza which includes fire-eating, puppetry, juggling and magic it will delight both adults and children of all ages.

In association with Burnley Market Charter 700th Anniversary

BURNLEY MAY DAY

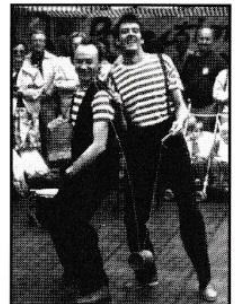
Towneley Park

- **Monday 2 May 12 noon - 4.30pm**

Admission Free

The Fabulous Salami Brothers perform feats of strength, skill and stupidity!. The Salamis are Mid Pennine's contribution to the celebrations in the Park with their unique brand of entertainment. Music, magic, illusion, juggling and escapology, it has sometimes been described as "organised chaos" or "lunacy", but no one has yet come up with a neat phrase to fit them . . . so why not come and see for yourself . . .

Presented in association with Burnley May Day Committee



TODMORDEN CARNIVAL

Centre Vale Park, Todmorden

- **Saturday 28 May**

Procession starts 2pm

Artizani presents MacMacpherson, a unique solo act which leaves audiences 'mentally exhausted and physically astounded'. His Raw Energy show combines the traditional skills of juggling, unicycling, tight - rope and tumbling with improvisation and mime. Mac was the first person ever to walk across Liverpool's Albert Dock on a tightrope when he appeared on Granada T.V's Celebration. Come along and witness the ingenuity and sheer pace of this performance.

Presented in association with Todmorden Charity Carnival Committee



GREAT HARWOOD SHOW

Wood Street Show Ground

- **Monday 30 May 12 - 4pm**

The Harmony Hounds will boogie their way through the afternoon with a lively selection of Twenties jazz numbers. Come rain or shine they are guaranteed to liven up the show crowds.

Presented in association with Great Harwood Show Committee



L I V E E N T E R T A

ROSSFEST '94

Eight days of fun, participation and something for everyone as Rossendale's community festival returns to the Valley. Rossfest '94 is organised by Rossendale Borough Council and Mid Pennine contributes to an exciting week.

SCULPTURE DAY

Rossendale Groundwork

• **Monday 25 April 10am - 4pm**

Open day at Groundwork, and a chance to watch or work with sculptors Michael Farrell and Pauline Holmes, both contributors to the valley's sculpture trail. Participants will help build spectacular street sculptures for Rossfest Street Fair.

LOWRY

Whitaker Park Museum

• **From Tuesday 26 April 7.30pm**

Join us to celebrate the opening of this exhibition by Rawtenstall's secret celebrity, international cartoonist Ray Lowry, long celebrated in the pages of NME and The Guardian. *Exhibition continues to 22 May*

BROUHAHA present 'WHATEVER THE WEATHER'

Accrington and Rossendale College Studio, Rawtenstall

• **Wednesday 27 April 7.30pm**

Admission £4.50/£3 concs



Europe's only female clown trio present this concoction of knockabout slapstick and comedy theatre in their production 'Whatever The Weather', a hit at the London International mime festival '93. Early

one morning three women hang their washing on a line and wait for it to dry. Time passes, the weather becomes erratic, sending the three characters into disarray. What starts out as a normal washing day becomes a memorable trip into a world of absurdity, eccentricity and imaginative fantasy. Something completely different, not to be missed!

Presented in association with Accrington & Rossendale College & supported by NWAB.

URDU MUSHAIRA

Public Library, Deardengate, Haslingden

• **Friday 29 April 7.30pm**

Admission £1

Sample the mesmeric charm of Urdu poetry in the informal setting of a Mushaira evening, with guest poets from all over the North West and Yorkshire. All welcome.

Presented in association with Rossendale Islamic Heritage Society, with support from NWAB.

WORLD BEAT PARTY WITH THE BRASSHOPPERS

Public Hall, Haslingden

• **Saturday 30 April from 8pm**

Admission £4.50/£3 concs

A fiesta of global rhythms from Liverpool's dynamic 8 piece. The Brasshoppers' blend of salsa, funk, jazz and RnB will get you hopping too. The Brasshoppers will be offering workshops for young local musicians interested in a street band. Caravanserai also will offer sessions, including one in East European dance!

For further information ring Tony Trehay on 0706 217777.



ROSSFEST STREET FAIR

Bank Street, Rawtenstall

• **Monday 2 May**

Pray for a fine day and join us in Bank Street for funfair, stalls, buskers, unique street sculptures and the brilliant Caravanserai, whose rootsy dance music is an original mix of Balkan, Armenian, Irish and just plain stomping styles.

Rossfest '94 is presented by Rossendale Borough Council in association with Mid Pennine Arts and is supported by North West Arts Board and Lancashire County Arts Unit.



CLASSICAL MUSIC

NORTHERN CHAMBER ORCHESTRA

Town Hall, Todmorden

• **Friday 15 April**

Balcony £7/£6 concs

Stalls £6/£5 concs

Full Time Students £4

Another chance to hear this fine orchestra, regular Naxos recording artists, in the imposing setting of Todmorden's historic Town Hall.

'Basically Baroque'

Music Director/Soloist: Nicholas Ward

Programme:

Handel - Concerto Grosso in G minor (op 6 no 6)

Alan Bush - English Suite

Vivaldi - The Four Seasons

Presented in association with NCO and supported by YHA

EXCURSION

MAGIC FLUTE

Grand Theatre, Leeds

• **Wednesday 1 June**

Tickets £13.75/£10.60 concs

Mozart's final masterpiece, and some of his most beautiful music, this enchanting fairytale never fails to delight audiences. Sung in English, this production promises to be one of the most exciting for years. Annabel Arden, renowned for her work with Theatre de Complicite makes her operatic directing debut with conductor Andrew Parrott.

Pick up points from 4.50pm in Rawtenstall, Accrington, Burnley, Nelson, and Colne.

Closing date for registration is Wednesday, 4 May.

Contact Janet Clunie on 0282 421986 for a registration form.

I N M E N T

JAZZ

Blue Note, Todmorden

A great line up of Jazz musicians for our regular Friday night slot.

PETER KING /GERARD PRESENCER QUINTET

• **Friday 8 April 8pm**

Admission £4.50/£3 concs

British alto sax maestro Pete King is a musician of genuine world class. For this welcome return to the Blue Note he is partnered by brilliant young trumpeter Gerard Presencer. Their touring band is completed by pianist Nikki Iles, Peter Fairclough on drums and Anthony Eagle on bass. This must surely be one of the highlights of this year's jazz calendar.

Presented in association with the Blue Note & supported by Jazz Action

PURPLE CIRCLE

• **Friday 6 May**

Admission £3.50/£2.50 concs

'One of the brightest and most distinctive sounds in the region'..... Jazz in the North West. This modern jazz quintet will present a programme of original numbers, written by sax player Andy Scott. The music is rooted in jazz with funk, latin and rock influences.

GARY COX with the CHRIS HOLMES TRIO

• **Friday 27 May**

Admission £3.50/£2.50 concs

Welcome back also to Manchester's tenor sax master, a consummate player who has perfected his craft with Maynard Ferguson, Ronnie Scott, Dankworth, the NDO and more.

Presented in association with the Blue Note

WORLD BEAT

WORLD BEAT PARTY with THE BRASSHOPPERS

(see under ROSSFEST)

FLATVILLE ACES

Public Hall, Haslingden

• **Saturday 21 May 8pm**

Admission £4.50/£3 concs

'Irresistible Louisiana swamp rhythms' (The Independent) from one of Britain's top Cajun bands. Based in Hampshire, the Flatvilles play traditional style Cajun fronted by an 'excellent fiddle player' (Independent), Cajun accordion and French vocals. Music for dancing and bound to be popular — so book early or come early!

A joint promotion with Rossendale Borough Council and supported by LCC Arts Unit & NWAB



ASIAN ARTS

EID MELA

Stoneyholme & Daneshouse Community Centre, Burnley

• **Sunday 29 May 1 - 6pm**

Admission £1.50/£1 concs, under 5's free

For the second Eid festival of the year the new centre plays host as local Asian communities celebrate. With music from popular Bangladeshi singer Alaur Rahman, traditional entertainments, stalls, food and fun . . . all are welcome to come along and share in a taste of Asian culture.

In association with East Lancashire Asian Arts Forum, with support from Burnley Market Charter, NWAB and LCC

AT A GLANCE

Date	Event	Venue
APRIL		
Sat 2	Mimika	Burnley Wharf
Fri 8	Peter King/ Gerard Presencer	Blue Note, Todmorden
Fri 8-14 May	Photographs by Paul Hill	Pendle Arts Gallery, Nelson
Sat 9	Craft Market: Ceramics	The Gallery Downstairs
Fri 15	Northern Chamber Orchestra	Town Hall, Todmorden
Sat 16-13 May	Furniture- Fun & Fantasy	The Gallery Downstairs
Thurs 21	Talk by Paul Hill	Town Hall, Nelson
Wed 27	Brouhaha	Rawtenstall College
Wed 27-22 May	Lowry	Whitaker Park, Rawtenstall
Fri 29	Urdu Mushaira	Public Library, Haslingden
Sat 30	Rossfest Worldbeat: Brasshoppers	Public Hall, Haslingden
MAY		
Mon 2	The Fabulous Salami Brothers	Towneley Park, Burnley
Mon 2	Rossfest Street Fair	Bank St, Rawtenstall
Fri 6	Purple Circle	Blue Note, Todmorden
Sat 14	Craft Market: Metal, Glass, & Jewellery	The Gallery Downstairs
Sat 21	Worldbeat: Flatville Aces	Public Hall, Haslingden
Sat 21-24 June	The Print Show	The Gallery Downstairs
Fri 27	Gary Cox/ Chris Holmes Trio	Blue Note, Todmorden
Sat 28	Artizani	Todmorden Carnival
Sun 29	Eid Mela	Stoneyholme & Daneshouse Centre, Burnley
Mon 30	Harmony Hounds	Show Ground, Great Harwood
(Wed 1 June)	Excursion: Magic Flute	Grand Theatre, Leeds

VISUAL ARTS

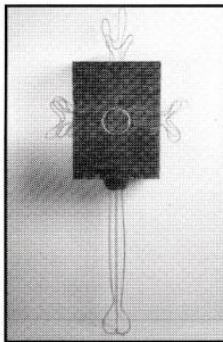
THE GALLERY DOWNSTAIRS

16 APRIL - 13 MAY

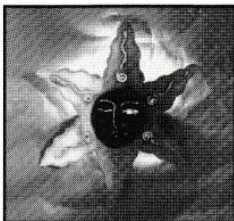
FURNITURE

FUN AND FANTASY

This exhibition brings together a diverse range of styles, materials and makers. Artist/blacksmith Jon Mills makes function-less objects with an element of wit and playfulness. To junkyard and demolition scrap Robin Widdowson brings new life to produce anything and everything from candlesticks to chairs and tables. Paul Johnson is one of the U.K's premier paper people and has latterly expanded his range to include furniture. He finishes his work with bright primary colours that evoke children's paintings and subway graffiti.



CRAFTS



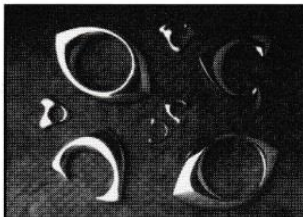
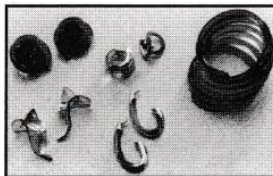
DIVINE LIGHTS

Switch on to the light fantastic with chandeliers and candelabra by Catherine Purves. Influenced by ancient Roman and Greek artifacts and mythological art, this sculptural lighting is made using thin shaped steel and bronze. Catherine then perforates the material to allow the light to shine through, the addition of spangle dangle glass beads and crystal add sparkle to the lights.

JEWELLERY SHOP

Marianne Squair

Marianne's jewellery uses perspex and acrylics combined with silver. It creates an effect of liquid escaping the confines of binding metal to flow over the arm, ear, wrists and fingers in a cascade of bubbling crystal or vibrant colour.



Bryony Robins

Sculpting metal in tactile aesthetic form results in fluid shapes with highly polished surfaces in solid silver, contrasting reflected light with the rigidity of the materials.

21 MAY - 24 JUNE

THE PRINT SHOW



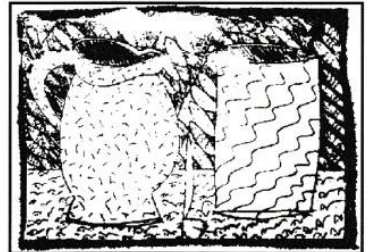
The diverse and exciting nature of Printmaking is explored once again through the works of local and national artists. From dramatic landscapes to bold, colourful calligraphics, an imaginative range of themes and styles are represented through traditional techniques of Etching, Wood Engraving and Linocut, contrasting with more recent Collagraphs, Monoprints and Computer Images. All work is for sale.

CRAFTS

The Print Show has explored various forms of printmaking and this year we have extended the show into another dimension to include printing on ceramics and textiles.

Paul Scott creates finely detailed etchings on paper porcelain. Ivana Roberts uses stamping, sponging and monoprinting on her ceramic forms. Jacqueline Norris uses a unique lino print technique directly onto soft clay.

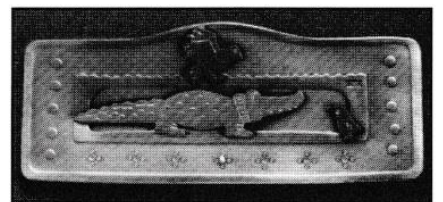
Her candlesticks, caskets and pots reflect an indulgence in colour and texture. In contrast Sharon Ting uses devore velvet in her sumptuous printed wraps and throws.



JEWELLERY SHOP

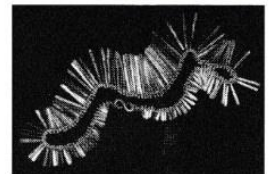
Trevor Forrester

All Trevor's brooches have a history, a story to tell. Inspired by travel, film titles, his hopes and dreams, half the fun of these pieces is deciding the interpretation of the title for yourself.



Lisa Hamilton

Japanese architecture and calligraphy, plant growth and bone structure are evident influences in this collection of light and flexible designs. Using forged silver wire Lisa links each piece through chain to create delicate movement and simplicity.



AND CRAFTS

WORKSHOPS/DEMOS

WOOD ENGRAVING

- **Saturday 28 May 10am - 4pm**

Anne Desmet will demonstrate the skills required to produce the finely detailed prints created by wood engraving.

PRINTING ON CERAMICS with PAUL SCOTT

- **Saturday 11 June 11am - 4pm**

In this demonstration Paul will reveal the innovative technique of combining etching and monoprinting with ceramics.

PROJECTS FOR PEOPLE

ARTS TEACHERS FORUM

The Gallery Downstairs, Burnley

- **Tuesday 19 April 4pm**

The first meeting to establish an arts teachers forum in the region. All teachers are welcome. For more information contact Jacky Riddell on 0282 421986.

MY MOTHER TOLD ME

Haslingden Young Mum's Group have been working on a drama and visual arts project with drama worker Anne Howarth and Cath Ford from Action Factory. They will be showing their work in the Rossendale area.

THE BEST YEARS OF YOUR LIFE

Gannow Community Centre, Burnley

- **Monday 25 April**

A day of living history as part of the elders group's reminiscence project at Gannow Community Centre. Food, demonstrations, competitions, photographs and memorabilia from yester year will all serve to take you back in time.

ASIAN ARTS STONEHOLME & DANESHUSE BANNER PROJECT

The womens and girls groups at the Youth and Community Centre are working with textile artist Liz Rayton to create a wall hanging for their centre.

For further information about the above projects contact Jacky Riddell at MPA on 0282 421986.

BAT WEEK

Towneley Hall, Natural History Centre, Burnley

- **Sunday 1 May to Sunday 8 May**

A whole week of batty events! As part of the programme Fiona Angwin will be running environmental and craft workshops, associated with bats, for local school groups on Thursday 5 and Friday 6 May. For further information please contact Mike Graham on 0282 424213:

Presented in association with Towneley Hall

CRAFT MARKETS

The Gallery Downstairs

Introducing a new series of one day markets:

CERAMICS

- **Saturday 9 April 10am - 4pm**

Admission FREE

Browse, buy and meet the maker. More than a dozen of this country's leading potters including John Calver, Eric Stockl, Derek Emms and many of your favourites from the Christmas exhibition will be in The Gallery Downstairs with their work.

Discover more about the complexities of ceramics. Paul Muchan, a firm favourite with many of our customers, will be demonstrating during the day. This is an opportunity to discover more about the making, decorating and firing of pots.

METAL, GLASS & JEWELLERY

- **Saturday, 14 May**

PAPER & PAINT

- **Saturday, 25 June**

Calling all craftspeople. If you want to know more about taking part in these markets ring Sheenagh on 0282 421986 for details. In association with Burnley Market Charter 700th Anniversary.



OUT AND ABOUT

LOWRY

Whitaker Park Museum, Rawtenstall

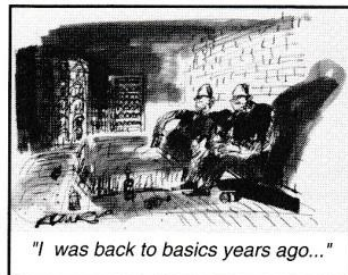
- **27 April - 22 May**

Mon - Fri 1-5pm.

Sat 10am-5pm. Sun 12-5pm.

Admission free

Wit, humour and satirical comment on people and politics are characterised in Ray's cartoons. Ray is a regular contributor to the Guardian, the Observer and Private Eye. His wry observations will leave you chuckling.



HOME GROUND

Photographs by Paul Hill

Pendle Arts Gallery, Town Hall, Market Street, Nelson

- **8 April - 14 May**

Mon - Fri 9.30am - 5pm. Sat 9.30am - 4pm.

Admission Free

Paul is one of Britain's best known independent photographers. This exhibition challenges the wider debate about the rural environment and how we affect the landscape. It explores beyond traces left on the land into issues affecting wild life, natural history and urban intrusion.

TALK by PAUL HILL

Town Hall, Nelson

- **Thursday, 21 April 7.30pm**

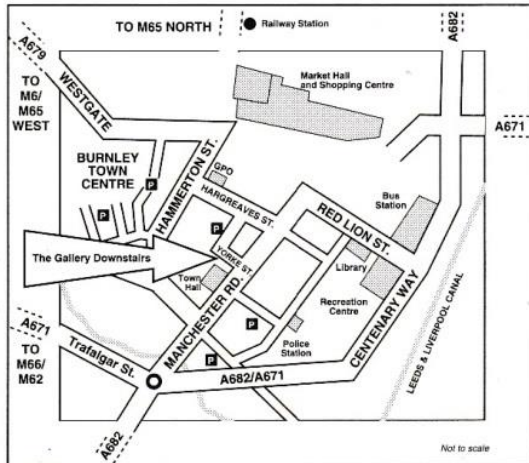
Admission £1 (Members of MPA & Pendle Arts Gallery FREE)

Paul will discuss developments in his work over the past five years and his current experimentation with sequential and framing devices.

The GALLERY

Downstairs

YORKE STREET, OFF MANCHESTER ROAD, BURNLEY, BB11 1HD. TELEPHONE: 0282 421986/429513



ADMISSION IS FREE

OPENING HOURS

Monday - Saturday 10am to 5pm
 except Thursday 1pm to 5pm
 Thursday 10am to 1pm - educational groups only.
 Please book in advance

DISABLED PEOPLE ARE WELCOME

Wheelchair users can gain access via our ramp. Guide dogs are welcome. If you need help you only have to ask. We have adapted toilet facilities.



TO ALL TEACHERS AND GROUP LEADERS

On Thursday mornings your class or group can work or enjoy a lesson in The Gallery Downstairs without interruption, as the Gallery is reserved exclusively for educational purposes until 1pm. Please telephone Julian Pearce on 0282 421986 for further information, or to book your time.

Mid Pennine Arts aims to increase the enjoyment and understanding of contemporary visual arts, and we offer facilities for practical workshops, study sessions, talks and seminars to schools and colleges and to other interested groups. Let us know what you would like to learn about.



Mid Pennine Arts gratefully acknowledges the financial assistance of the Borough Councils of Burnley, Hyndburn, Pendle and Rossendale, the Township of Todmorden, North West Arts Board, Yorkshire and Humberside Arts and Lancashire County Council.

The information in this brochure is correct at the time of going to press but MPA reserves the right to cancel or amend the programme due to unforeseen circumstances. The work of Mid Pennine Arts is supported by the Corporate Membership of Co-operative Retail Services Ltd. and by the Membership of 72 non-profit making local organisations. Assisted by BT through Business in the Arts: North West. Design and Print by Hartley & Hartley Ltd. Brunswick House, Brunswick St., Nelson, Lancs. BB9 0HQ. Telephone: 0282 611331. Facsimile: 0282 611333. (15819)