

TARIKA



JANUARY

FEBRUARY

MARCH

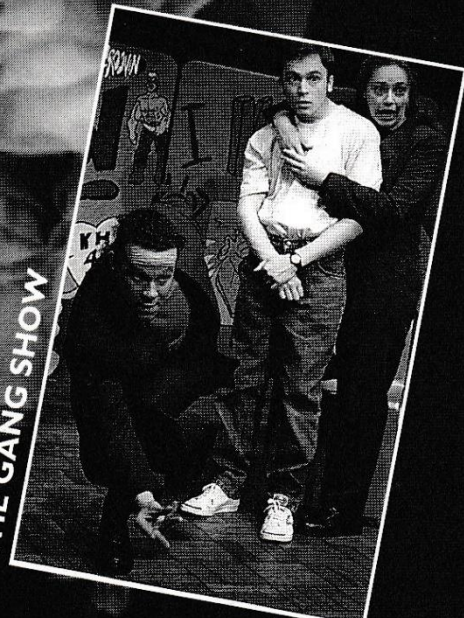
APRIL

SEEING IS BELIEVING - ALISON McCULLOCH

MID PENNINE Arts

PROGRAMME OF EVENTS

THE GANG SHOW



TICKETS - IT'S SO EASY TO BOOK



IN PERSON: Call in at the Mid Pennine Gallery, Yorke Street, Burnley. Open Monday to Saturday 10am - 5pm, Thursday 1-5pm (or buy tickets in your area - see under 'Buy your Tickets Locally')



BY PHONE: (01282) 421986 **BY FAX:** (01282) 429513
Ring us to buy tickets for our events and pay for them by credit card. All Access, Eurocard, Mastercard and Visa cards are accepted.

Reserve Tickets:
You can reserve tickets. Reservations will be held for 3 days.



BY POST: Write to us (no stamp required) at FREEPOST BU 874, Burnley, Lancs BB11 1BR.

Please make cheques payable to MPA and enclose an S.A.E.

CONCESSIONS: Concessionary rates are available to our MEMBERS, those in full time education, unemployed people, senior citizens, registered disabled people and members of The Met, Bury.

GROUP BOOKINGS: Buy ten, get the eleventh free. For larger parties contact Kary in the Marketing Department to discuss rates.

FROM A GOLDEN TRADITION

BUY YOUR TICKETS LOCALLY

Accrington	MPA tickets are available from: The Information Shop, 3 Abbey Street Hyndburn Leisure, Town Hall
Bacup	Public Library, St. James Square First Steps(Business Consultants), Fiscal House, 27 St James St
Barnoldswick	Tourist Information, Fernlea Avenue
Blackburn	Althams Travel Services, 12 Ainsworth Street
Bury	The Met, Derby Hall, Market Street
Clitheroe	Althams Travel Services, 20 King Street Tourist Information Centre, Church Walk
Colne	Althams Travel Services, 13 Albert Road Pendle Leisure Services, Bank House, 61 Albert Road
Haslingden	Public Library, Deardengate
Hebden Bridge	Tourist Information Centre, 1 Bridgegate
Nelson	Althams Travel Services, 1 Scotland Road Tourist Information Centre, Town Hall
Rawtenstall	Central Library, Queens Square
Todmorden	Tourist Information Centre, 41-45 Kay Street Althams Travel Services, 15 Halifax Road Bear Wholefoods 29 Rochdale Road

RANIJIT KAUR DARYAL "LARGE CLAY RELIEF"

BECOME A MEMBER

Becoming a member of MPA is easy and will save you money. Save £1.50 at most events. Get 5% discount on cash purchases in the Gallery.

Members also get

- The chance to borrow equipment (theatre equipment, childrens play inflatables and more)
- Advance information - as a member you get forthcoming season brochures mailed direct to your home
- Personal invitations to socialise with MPA staff and other members at Gallery openings

All this for £9 (£12 joint) annual membership
Becoming a member is simple. Just call in and see us during office hours, ring or write to us for a membership form. Send it back with your payment and you become a member immediately.

TOWN HALL SPECIALS ACCRINGTON

Town Hall, Blackburn Road, Accrington
A series of special events in Accrington's central venue
A joint promotion with Hyndburn Leisure Services

TARIKA



FRI
20th
JAN

TARIKA

Friday 20 January
Doors 8pm
Tickets £4.50/£3 concessions

The authentic, exotic sound of Madagascar. The exciting new band which directly evolved from Tarika Sammy, the Malagasy roots music quartet who were one of the world music scene's biggest hits of the past few years. The new 5 piece line up released their new album, Bibiango, worldwide last Autumn.

"A mystifying array of up-beat rhythms, soulful harmonies and all acoustic instruments produce a high energy, infectious groove." The Independent.

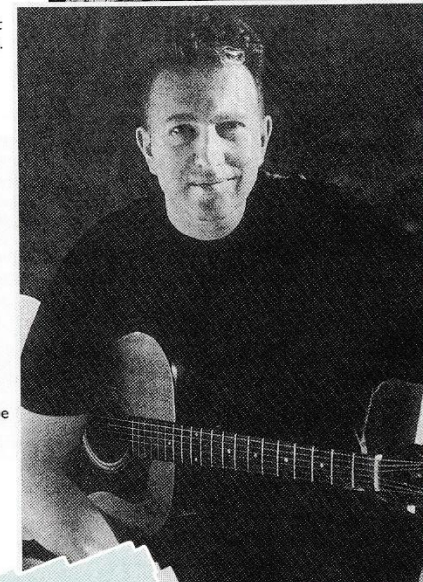
A Worldbeat event supported by Lancashire Arts Unit and North West Arts Board.

FRI
24th
FEB

TOM ROBINSON & BAND

Friday 24 February
Doors 8pm
Tickets £6/£5 concessions

Tom's career spans twenty years in the rock music business. His first hit song in 1977, 2-4-6-8 Motorway, made him an overnight success. Well known as a political songwriter he has most recently stirred debate as the presenter of Radio 4's The Locker Room. His latest in a string of albums, Love Over Rage, reveals the same wit and musical talent that have taken him from Punk to the present day. Having lost none of his bite this should be one to remember. Don't miss it.



TOM ROBINSON & BAND

FRI
21st
APR

THE TRACY SCHWARZ TRIO

Friday 21 April
Doors 8pm
Tickets £5/£4 concessions

Louisiana swamp music - direct from Louisiana. A rare chance to experience Cajun music from its source when The Tracy Schwarz Trio make a return visit across the Atlantic with their own dynamic and soulful interpretation of this irresistible music.

Tracy's credentials are of the best. His career stretches over some thirty years, in which time he has performed with some of the great names in American music. He brings with him two equally fine musicians, Matt Haney, a vastly respected fiddle player and Lee Blackwell on guitar who provides the essential rhythm that drives the music along. A chance to dance to some of traditional Cajun's finest exponents.



THE TRACY SCHWARZ TRIO

CAMERATA IN COLNE

Municipal Hall, Colne
 This highly popular series with Manchester's Camerata continues in the New Year with more concert dates for your diary. The Colne Orchestral series represents a convenient, comfortable and reasonably priced night out. There is easy parking, bar and refreshments and an opportunity to enjoy pre-concert talks. Members of Mid Pennine Arts can claim concessionary ticket prices.

THU
 23rd
 FEB

Thursday 23 February
CAMERATA ENSEMBLE

conducted by Richard Howarth
Strauss: Till Eulenspiegel
Martini: Nonet
Beethoven: Septet

The popular format of the more intimate Camerata Ensemble is a favourite during the season. This concert will be no exception. Till Eulenspiegel, performed for the first time in Colne, will delight and the Beethoven Septet will be the finale to an evening of exceptional music.

THU
 30th
 MAR

Thursday 30 March
MANCHESTER CAMERATA

conducted by Nicholas Kraemer with outstanding recorder soloist Michala Petri.

Her last visit packed the house for a superb concert. You are advised to book early for this rare chance to hear a virtuoso of global stature in Colne.
Vivaldi: Concerto Grosso op.3
Telemann: Suite for Recorder
Vivaldi: Concerto for Recorder



Balcony tickets £8/£6 Stalls tickets £6/£5

All concerts start at 7.30pm and pre-concert talks begin at 6.45pm.

Presented in association with Pendle Borough Council and Manchester Camerata

EXCURSIONS

THU
 26th
 JAN

TOSCA - PUCCINI

Thursday 26 January
 Tickets £11 and £8.80 seniors
 Puccini's grandest and most dramatic work.

MOZART

Hallé Orchestra, Free Trade Hall, Manchester
 Kent Nagano - Conductor
 Barry Tuckwell - Horn
 Sunday 2 April
 Tickets £10 (rear stalls)

Kent Nagano contrasts two of Mozart's symphonies, the First written in his mid-teens and one of his last great symphonies, the tragic No 40. As the centrepiece, the renowned horn player Barry Tuckwell performs two of Mozart's spirited horn concertos, K417 and K447.
 For further details and pick-up points for the coach please contact Janet on 0282 421986. Our excursions are very popular so book early.

MUSIC AT THE HAWORTH

Haworth Art Gallery, Accrington
 The delightful setting of the Haworth Art Gallery's Music Room is the venue for these informal evening recitals.

WED
 15th
 FEB

AD LIB - CLARINET DUO

Wednesday 15 February
 7.30pm
 £4.50/£3 concessions

Two young professionals on Sir Yehudi Menuhin's 'Live MusicNow!' scheme. Kate Luxmore and Rosalind Hawley met at the Royal Northern College of Music. Their experience already takes in Radio 3 broadcasts, BBC 2's 'Late Show' and an Albert Hall prom. As Ad Lib they form an exciting clarinet duo, relaxed and very musical. Their repertoire ranges from baroque through early classical to the 20th century.

WED
 15th
 MAR

FANTASIA - FLUTE AND PIANO DUO

Wednesday 15 March 7.30pm
 Tickets £4.50/£3 concessions

Debussy, Greig, Poulenc and Bach all feature in an attractive programme from another talented young duo. These versatile and very busy musicians already have a wealth of experience behind them. Flautist Sarah Bull has recorded for BBC Radio and TV, and plays for Camerata, RLPO and other orchestras. Pianist Sally Bradnam has played in the USA, the Hungarian Embassy and solo onstage for Manchester City of Drama's 'Threepenny Opera'.

In association with Haworth Art Gallery

ASIAN ARTS CELEBRATIONS

SUN
22nd
JAN

MEENA BAZAAR

Sunday 22 January 2 - 5pm
Stoneyholme and Daneshouse
Community Centre, Burnley
£1.50 (Under 16's £1, Under 5's Free)

A lively afternoon event for women and children only with music from Ramzan and Party, a fashion show, stalls, food and fun.

IAW Lancashire County Libraries Ethnic Services

SAT
18th
MAR

EID MELA

Saturday 18 March 1-5pm
Civic Theatre, Nelson
£1.50 (Under 16's £1, Under 5's Free)

To celebrate the end of Ramadan an afternoon of entertainment and activity is promised for all comers. There's stories, music, stalls, delicious food, and much more. Something for all the family. Presented in association with East Lancs Asian Arts Forum, Pakistan Welfare Association (Nelson) & Lancashire County Libraries Ethnic Services

FAMILY SHOWS

SAT
21st
JAN

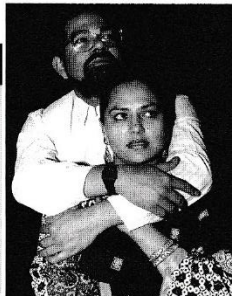
PESHKAR THEATRE COMPANY

present

CHAPATI AND CHIPS

Saturday 21 January 3pm
£3/£1.50 concessions.
Brierfield Community Centre

CHAPATI & CHIPS



SAT
28th
JAN

Saturday 28 January 3pm
£3/£1.50 concessions.

Haslingden Public Hall

'Chapati and Chips' looks at the experiences of one family coming to Britain from Pakistan. The play explores their hopes and aspirations

and follows their successes and failures. Peshkar from Oldham are all volunteer actors, coming from four different communities. They present a multi lingual play with an exciting masala of Asian music and dance - an entertainment for all the family, that anyone can enjoy.



TUE
31st
JAN

TARA ARTS present

THE MUFTI

FROM ISTANBUL

(for 7 - 11 year olds)

Tickets for all shows are £3/£1.50 concessions.

Tuesday 31 January 7pm

Great Harwood Youth and Community Centre

THU
2nd
FEB

Thursday 2 February 7pm

Stoneyholme and Daneshouse Youth & Community Centre, Burnley

SAT
4th
FEB

Friday 3 February 7pm

Brierfield Community Centre

FRI
3rd
FEB

Saturday 4 February 2pm
Vale Centre, Cornholme

Hot on the heels of the hugely successful Tempest, we welcome back the UK's leading Asian theatre company. This time Tara Arts presents The

Mufti from Istanbul, adapted from Moliere's farce Le Bourgeois Gentilhomme. Using puppets, masks, music and song, they unfold an hilarious tale of an ambitious fool. Tara Arts will also tour this play to local junior schools - see under Schools Presented in Association with Lancashire County Libraries Ethnic Services.

THE MUFTI FROM ISTANBUL



LIVE AT RAWTENSTALL STUDIO

Accrington and Rossendale College Studio,
Rawtenstall

The best national touring companies come to
Rawtenstall Studio Theatre

WED
1st
MAR

YORKSHIRE THEATRE

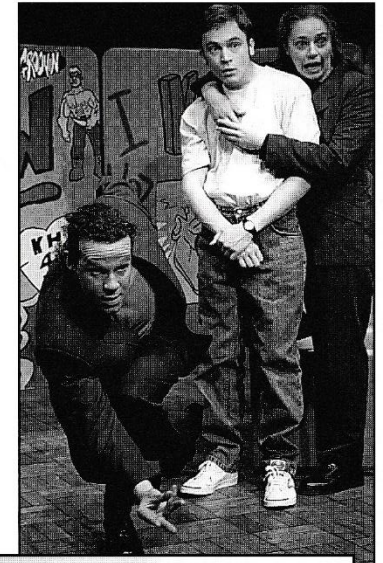
COMPANY present

THE GANG SHOW

Wednesday 1 March 7.30pm

£4.50/£3 concessions

The Gang Show tells the story of Mikey, a young man growing up on an inner city housing estate. His future looks bleak. Then in walk a glamorous couple and his life is changed forever. Mikey is lured into a world of crime as they show him a way of acquiring power, money and excitement. Not only that, they can justify everything they do. Mikey cannot resist. A tale of contemporary relevance, but told in this brilliant company's unique style: physical, fast paced cartoon-strip comedy, always accessible and hugely entertaining.



THE GANG SHOW

WED
5th
APR

TALKING PICTURES present

SECRETS OF THE CITY

Wednesday 5 April 7.30pm

£4.50/£3 concessions

A visual extravaganza, a mixture of noise, passion, and comedy. Leading the audience into the urban labyrinth, into a world of aspiration, sudden changes of fortune and people who are never what they first appear. The heady open plan office, the desperate street corner encounter and the levelling health centre waiting room; Secrets of the City employs an imaginative visual style of transitions between location, language and generation to tell a story of the city and its citizens.



SECRETS OF THE CITY

SHAKESPEARE'S COMEDY OF ERRORS



TUE
2nd
MAY

THIRD PARTY
PRODUCTIONS

present

SHAKESPEARE'S COMEDY OF ERRORS

Tuesday 2 May 7.30pm £4.50/£3 concessions

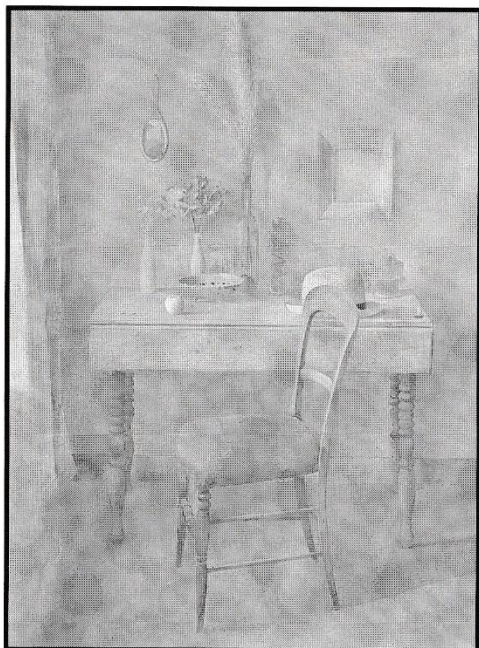
The brightest and most accessible of Shakespeare's plays, 'The Comedy of Errors' is performed by Third Party Productions, ex Mediaeval Players actors, who specialise in touring popular classic theatre. An action packed tale of mistaken identity unfolds, rich territory for the Elizabethan clowns and for Third Party who promise a colourful production with live music and period costume.

MID PENNINE GALLERY

YORKE STREET, OFF MANCHESTER ROAD, BURNLEY
OPEN MONDAY TO SATURDAY 10AM - 5PM, THURSDAY 1-5PM.

ADMISSION IS FREE

JAN 14 TO FEB 18



DAVID TINDLE, R.A.

A first for the Mid Pennine Gallery is this one - man exhibition by a Royal Academician and our first from London's famous Cork Street Redfern Gallery. David Tindle was elected to the Royal Academy in 1979. Born in Huddersfield and now living in Brittany, he was former Ruskin Master of Drawing at Oxford University. He is one of four artists featured in the BBC TV film 'A Feeling For Paint'. The National Portrait Gallery commissioned David to paint a portrait of Sir Dirk Bogarde. His paintings, all made over the last five years, are egg tempera and oil on canvas.

Students from Burnley Collège will work in the gallery during David Tindle's exhibition (see under activities)

CRAFTS

YERJA CERAMICS AND TEXTILES

These vibrant ceramics and textiles owe much to the Australian upbringing of Chris Speyer and Kath Ukleja. Kath's work is bold and large scale, she paints on cotton, silk or linen, handling colour with a freedom that verges on the reckless. Sun - soaked colours, semi-abstract shapes and patterns suggest exotic flowers and foliage.

Much of Chris's stone ware is slab rolled, press moulded and assembled; using resist techniques colour overlays are built up. The sea is a constantly recurring theme and then there are strange colourful birds.



JEWELLERY

TERESA GALANIDES

Using primitive craft techniques, inspired by the work of early Egyptian and South American jewellers, all Theresa's pieces exhibit signs of the making process. The work is concerned with the recycling of household waste and scrap materials such as steel, copper, brass and aluminium.

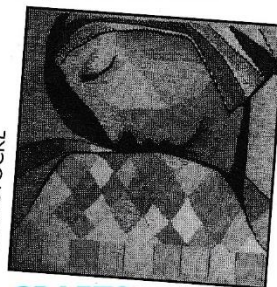
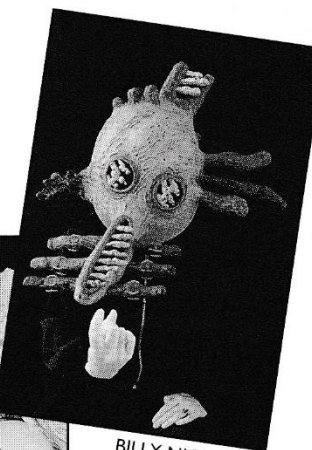
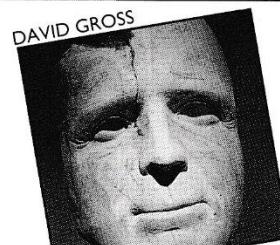
MARK VEEVERS

Mark's work in precious metals is largely the product of experimentation. When metals are combined and treated with various processes they react in certain ways producing effects which are subsequently used as a basis for design. Geometric shapes and the natural decorative qualities of the metals characterise his jewellery.

FEB 25 TO APRIL 8

SEEING IS BELIEVING

'The Magic of Mask'
Masks have the ability to turn the wearer into another being. Hiding the face gives power through anonymity. Masks are used for performance, protection, to intimidate, for humour, for carnival and to caricature. This exhibition features over ten designers and makers of masks working in a range of materials and styles. An exciting, skilled and imaginative collection.



CRAFTS

MINIATURE TAPESTRIES

The ancient art of tapestry weaving is a very exacting medium requiring a great deal of time to complete even a small area of work. Many of today's weavers are artists responding to the fibre or expressing ideas through a medium which allows a great variety of approaches to colour, texture and surface. 25 of the country's leading tapestry weavers have produced work in miniature especially for this show curated by Meira Stockl.

PHILIP CLARK

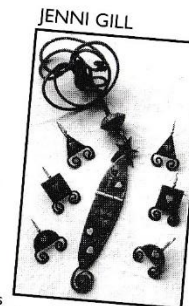
JEWELLERY

JENNI GILL

Outer space and the imagination of the science fiction artists of the 60's is the source of inspiration for these pieces. Worked in contrasting metals, precious and non-precious, these are objects with small surprises!

ANNA DE VILLE

Fragments of stories imbue much of this work, a suggestion of the wild wood, of horns and teeth. These richly dark pieces contrast dramatically with areas of polished silver, glowing garnet and amber.



APRIL 21 TO MAY 26

KINETIC SCULPTURE

Sculpture on the move, wild and wacky work by celebrated artists moves into the gallery for Spring.

CRAFTS

TOYS

Jim Edmiston is interested in the integral part animal, bird and foliage shapes play in tribal and folk art. He translates these into decorative patterns on the toys he makes.

JEWELLERY

KATHIE MURPHY

Colour and use of materials, dyed translucent resin and black nitrile rubber, are an integral part of Kathy's jewellery which combines a variety of shapes to produce pieces that are playful and tactile.

ASTRID MAHRER

Chased from silver sheet and then etched, drilled or punched, these pieces are a series of variations on a theme of miniature boxes

EXTENDED PROJECTS

Mid Pennine encourages participation in creative arts through a range of extended projects, bringing together community groups and professional artists in a variety of media. Here are some of our current projects. If you are interested in any of these, or have your own proposal to make, contact Jacky Riddell on 01282 421986

DANCE

There are new and exciting dance programmes happening in Burnley, Pendle and Rossendale and it's not too late to join in. All welcome, experience not essential.

HUNCOAT

In association with Hyndburn Leisure, Mid Pennine Arts are setting up a series of taster workshops in different art forms for people who live in Huncoat (Accrington) or for groups who meet there. If you or your group would like to take part call us for more information.



INTERNATIONAL WOMEN'S WEEK

6 - 10 March

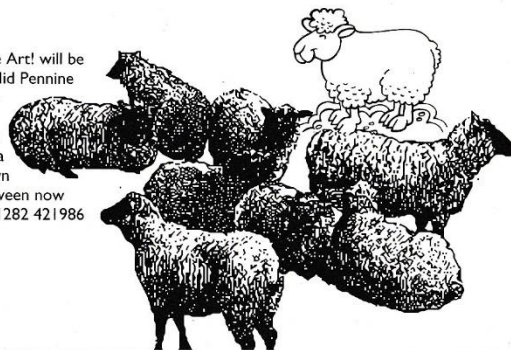
Looking for some arts activity during this important week? We are currently planning a project for the week involving different art forms lead by professional female artist. Groups and individuals welcome. Call now to avoid disappointment.

CALLING ALL OVER 50'S

Full Circle Arts are looking for anyone over 50 interested in participating in the arts. They are looking for groups, individuals and artists to be a part of an elders arts forum and to participate in arts activities which are being planned for this area.

SHEEP!

In October '95 the visual arts festival Make Art! will be happening throughout the North West. Mid Pennine Arts are sending sheep through the towns and hillsides of East Lancashire and we want you to make them! Sheep of any size and made from any material will be found a home. We will help you organise your own project which can take place any time between now and October. Call Sheenagh or Jacky on 01282 421986 to find out more.



FOR YOUR PROJECT

RURAL ARTS FUND

Do you live in a village or smaller rural community? We are agents for a special Rural Arts Fund and will direct grants towards local communities or groups who want to work together on a creative project. Any group can apply! If you have a new idea.... get in touch with us for further details.

WORLD BEAT

FRI
20th
JAN

TARIKA

Friday 20 January
A Worldbeat special at Accrington Town Hall.
(See Town Hall Specials)



TARIKA

Public Hall, Haslingden

Haslingden's Saturday night dance series returns with some of the best music sounds.

Doors 8pm. Licensed bar - Late bar applied for.

Tickets for all events £4.50/£3 concessions

SAT
11th
MAR

JUSTIN VALI TRIO

Saturday 11 March

The national instrument of Madagascar is a stringed instrument, the Valiha. Justin's skill and speciality with this instrument produces a clear, punchy sound and delightful swing, 'sounds like an aggressive harpsichord' (The Guardian). With his unplugged trio the result is a dazzling mixture of African rhythms with refined Asian melodies.

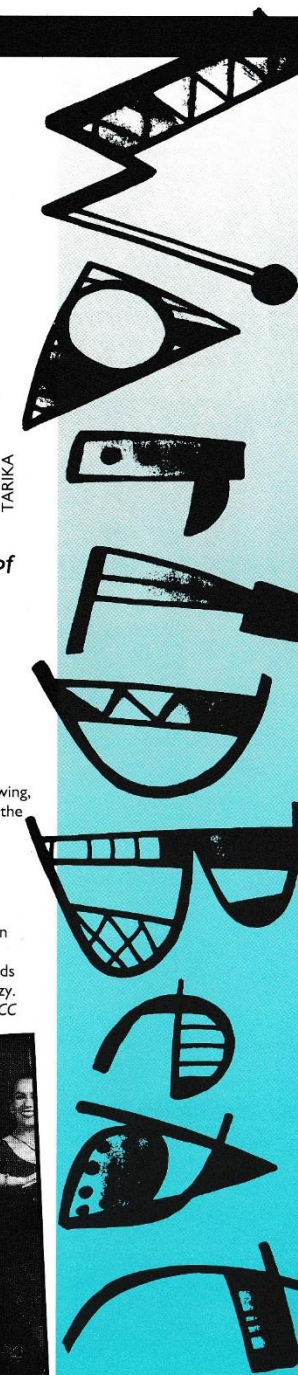
SAT
29th
APR

SALSA Y ACHÉ

Saturday 29 April

The hottest addition to the London's Latin scene, the eleven piece Salsa Y Ache draw crowds wherever they go. The predominantly female band favour the authentic Salsa sounds of Cuba, Colombia and New York to drive the dancers crazy. Worldbeat is a joint promotion with Rossendale Borough Council, with support from LCC Arts Unit and NWAB.

SALSA Y ACHÉ



JAZZ AT THE BLUE NOTE

A new season of some of the very best in Jazz at Todmorden's atmospheric nightspot, **Bramsche Square, Todmorden.** Doors open at 8pm, Band from 8.45pm, late bar. Tickets to all shows £4.50/£3 concessions



JOE TEMPERLEY WITH THE CHRIS HOLMES TRIO

Friday 17 February

Joe is a world class baritone saxophonist. He toured in the 60's with many of this country's big bands before moving to New York. He rapidly became one of our most famous exports recording with top musicians and playing in the Duke Ellington Orchestra.

FRI
17th
FEB

APITOS

Friday 24 March

A welcome return for this very exciting band. Apitos comprises some of the North West's finest musicians, and combines authentic Latin rhythms with vigorous jazz

showing. Very popular last time, and sure to have the dance floor filling up again.

FRI
24th
MAR



TINA MAY QUARTET

Thursday 27 April

Tina was the winner of the 'Outstanding Young Jazz Musician' award in 1993. Her extraordinary versatility and astounding vocal range are much in evidence on her latest album, 'It Ain't Necessarily So'. She is joined by her husband, drummer Clark Tracey, pianist of the year Dave Newton and double bassist Wayne Batchelor - a veritable supergroup.

THU
27th
APR

small grants
for arts projects
in rural lancashire

- FUNDING
- COMMUNITY GROUPS
- TO PLAN AND PARTICIPATE IN CREATIVE ACTIVITIES

Please Contact: **Melanie Diggle**,
Mid Pennine Arts, Yorke Street,
Burnley BB11 1HD.
Tel: 01282 421986



RED WATER CENTRE

Back Rough Farm,
Coalclough Rd. Todmorden,
Lancs., OL14 8NU.
Tel: 01706 815328

Residential facilities for hire & courses in spectacular setting. Ideal for therapy/art groups.

MEMBERSHIP • MEMBERSHIP • MEMBERSHIP • MEMBERSHIP •

Members of **MID PENNINE ARTS** save **£££'s**
on tickets and cash purchases from the gallery

FOR FURTHER INFORMATION
AND AN APPLICATION FORM CONTACT

MID PENNINE ARTS 01282 421986

Join today for as little as **£4**

MEMBERSHIP • MEMBERSHIP • MEMBERSHIP • MEMBERSHIP •

Mid-Pennine Arts gratefully acknowledges the financial assistance of the Borough Councils of Burnley, Hyndburn, Pendle and Rossendale, the Town Council of Todmorden, North West Arts Board, Yorkshire and Humber Arts and Lancashire County Council Arts Unit.

The work of Mid Pennine Arts is supported by the Corporate Membership of Co-operative Retail Services Ltd. and by the Membership of 72 non-profit making local organisations. Assisted by Joe Houghton and Grace Dearborn Ltd. through Business in the Arts: North West. Camerata Sponsors: Fort Vale Engineering Ltd.; Silentnight Holdings plc; Scapa Group plc; Cooper, Smith & Williams; Donald Race & Newton; Stanley House Veterinary Surgeon, and Whittle & Whittaker.

The information in this brochure is correct at the time of going to press but MPA reserves the right to cancel or amend the programme due to unforeseen circumstances.

programme

QUICK GLANCE

DATE	EVENT	VENUE
EXHIBITIONS		
Jan 7 - Feb 4	<i>From a Golden Tradition</i>	Public Library, Nelson
Jan 14 - Feb 18	<i>David Tindle, RA</i>	Mid Pennine Gallery
Feb 6 - Feb 28	<i>Jewellery by Ellen Darby</i>	Public Library, Rishton
Feb 25 - April 8	<i>Seeing is Believing</i>	Mid Pennine Gallery
April 22 - May 26	<i>Kinetic Sculpture</i>	Mid Pennine Gallery
JANUARY		
Fri 20	<i>Tarika</i>	Town Hall, Accrington
Sat 21	<i>Chapati & Chips</i>	Community Centre, Brierfield
Sun 22	<i>Meena Bazaar</i>	Stoneyholme & Daneshouse
Thurs 26	<i>Excursion: Tosca</i>	Grand Theatre, Leeds
Sat 28	<i>Chapati & Chips</i>	Public Hall, Haslingden
Tues 31	<i>Tara Arts</i>	Great Harwood
FEBRUARY		
Thurs 2	<i>Tara Arts</i>	Stoneyholme & Daneshouse
Fri 3	<i>Tara Arts</i>	Brierfield
Sat 4	<i>Tara Arts</i>	Cornholme
Wed 15	<i>Ad Lib: Clarinet Duo</i>	Haworth Art Gallery, Accrington
Fri 17	<i>Jazz – Joe Temperley</i>	Blue Note, Todmorden
Thurs 23	<i>Camerata</i>	Municipal Hall, Colne
Fri 24	<i>Tom Robinson</i>	Town Hall, Accrington
MARCH		
Wed 1	<i>Yorkshire Theatre Co: The Gang Show</i>	Rawtenstall College
Thurs 9	<i>Kokuma</i>	Rawtenstall College
Sat 11	<i>Worldbeat: Justin Vali Trio</i>	Public Hall, Haslingden
Wed 15	<i>Fantasia: Flute/Piano</i>	Haworth Art Gallery, Accrington
Sat 18	<i>Eid Mela</i>	Civic Theatre, Nelson
Fri 24	<i>Jazz – Apitos</i>	Blue Note, Todmorden
Thurs 30	<i>Camerata</i>	Municipal Hall, Colne
APRIL		
Sun 2	<i>Excursion: Hallé</i>	Manchester
Wed 5	<i>Talking Pictures</i>	Rawtenstall College
Fri 11	<i>Tracy Schwarz Trio</i>	Town Hall, Accrington
Thurs 27	<i>Jazz – Tina May Quartet</i>	Blue Note, Todmorden
Sat 29	<i>Worldbeat: Salsa Y Aché</i>	Public Hall, Haslingden
MAY		
Tues 2	<i>Third Party: Comedy of Errors</i>	



CLASSICAL DANCE

Designed and Printed by PRINTOFF GRAPHIC ARTS LTD 0282 612222

