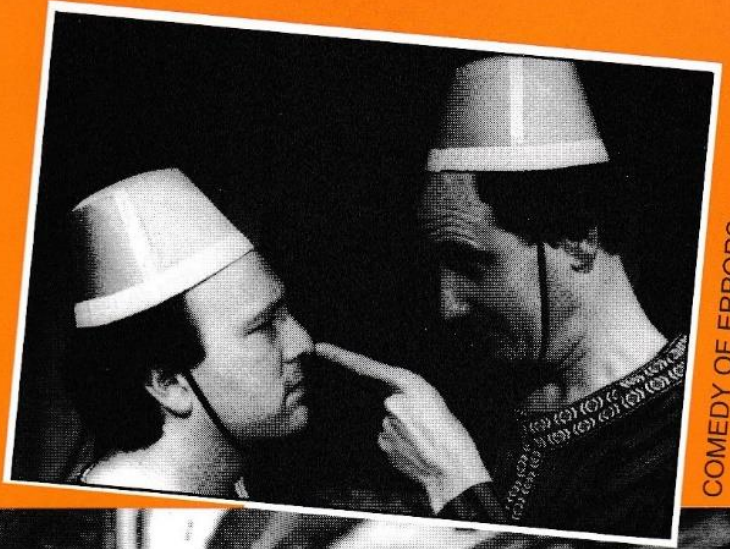


MID PENNINE

Arts



COMEDY OF ERRORS



S. JONES - HUGHES

MAY

JUNE

JULY

AUGUST



LIVE POETS SOCIETY

PROGRAMME OF EVENTS



TICKETS - IT'S SO EASY TO BOOK



IN PERSON: Call in at the Mid Pennine Gallery, Yorke Street, Burnley. Open Monday to Saturday 10am-5pm, Thursday 1-5pm (or buy your tickets in your area - see under "Buy Your Tickets Locally")



BY PHONE: (01282) 421986 BY FAX: (01282) 429513 Ring us to buy tickets for our events and pay for them by credit card. All Access, Eurocard, Mastercard and Visa cards are accepted. RESERVE TICKETS: You can reserve tickets. Reservations will be held for three days.



BY POST: Write to us (NO STAMP REQUIRED) at FREEPOST BU 874, Burnley, Lancashire, BB11 1BR. Please make cheques payable to MPA and enclose an S.A.E.

CONCESSIONS: Concessionary rates are available to our MEMBERS, those in full time education, unemployed people, senior citizens, registered disabled people and members of The Met, Bury.

GROUP BOOKINGS: Buy ten, get the eleventh free. For larger parties contact Kary in the Marketing department to discuss rates.

BUY YOUR TICKETS LOCALLY

MPA tickets are available from:

Accrington	The Information Shop, 3 Abbey Street Hyndburn Leisure, Town Hall
Bacup	Public Library, St. James Square First Steps (Business Consultants), Fiscal House, 27 St. James Street
Barnoldswick	Tourist Information, Fearlea Avenue
Blackburn	Althams Travel Services, 12 Ainsworth Street
Bury	The Met, Derby Hall, Market Street
Clitheroe	Tourist Information Centre, Church Walk
Colne	Althams Travel Services, 13 Albert Road Pendle Leisure Services, Bank House, 61 Albert Road
Haslingden	Public Library, Deardengate
Hebden Bridge	Tourist Information Centre, 1 Bridgegate
Nelson	Althams Travel Services, 1 Scotland Road Tourist Information Centre, Town Hall
Rawtenstall	Central Library, Queens Square Tourist Information Centre, 41-46 Kay Street
Todmorden	Althams Travel Services, 15 Halifax Road Bear Wholefoods, 29 Rochdale Road

BECOME A MEMBER

Becoming a member of MPA is easy and will save you £1.50 at most events and 5% discount on cash purchases from the Gallery.

Members also get

- The chance to borrow equipment (theatre equipment, children's play inflatables and more)
- Advance information - as a member you get forthcoming season brochure mailed direct to your home
- Personal invitations to join MPA staff and other members at Gallery openings and other special events

All this for £9 (£12 joint) annual membership

Becoming a member is simple. Just call in and see us during office hours, ring or write to us for a membership form. Send it back with your payment and you become a member immediately.

ROSSFEST 1995

Eight days of fun, participation and something for everyone as Rossendale's community festival returns to the Valley.

Rossfest '95 is organised by Rossendale Borough Council and Mid Pennine Arts contributes to an exciting week.

STEFFAN JONES-HUGHES

Artist in Residence
Rawtenstall Town Centre
April 29- 6 May
(See under Activities)

Apr
29th -
6 MAY

WORLDBEAT SPECIAL

SALSA Y ACHE
Saturday 29 April Doors 8pm
£4.50/£3 Members & Concessions
Public Hall, Haslingden

SAT
29th
APR

The hottest addition to the London Latin scene, this predominantly female band draw crowds wherever they go. The eleven piece Salsa Y Ache favour the authentic salsa sounds of Cuba, Colombia and New York. Sure to drive the dancers crazy. Ring 01282 421986 for details of the Saturday afternoon Salsa workshops.

(See also under Worldbeat for other global dance nights)

SAT
29th
APR

AVANTI DISPLAY

Pedalling Abroad
Saturday 29 April 11.30am - 3pm
Valley Centre Shopping Precinct, Rawtenstall

TUE
2nd
MAY

THIRD PARTY PRODUCTIONS

present
**SHAKESPEARE'S
COMEDY OF ERRORS**

Tuesday 2 May 7.30pm.

£4.50/£3 Members & Concessions

Accrington and Rossendale College Studio, Rawtenstall

Performed by Third Party Productions, ex Mediaeval Players actors, who specialise in touring popular classic theatre, this is the brightest and most accessible of Shakespeare's plays.

COMEDY OF ERRORS



SALSA Y ACHE

FRI
5th
MAY

MUSHAIRA

Friday 5 May
(See under Asian Arts)

SAT
6th
MAY

PESHKAR THEATRE COMPANY present

CHAPATI & CHIPS

Saturday 6 May 7pm
£3/£1.50 Members & Concessions
Public Hall, Haslingden

Chapati & Chips looks at the experiences of one family coming to Britain from Pakistan. The play explores their hopes and aspirations and follows their successes and failures. Peshkar from Oldham are all volunteer actors, coming from four different communities. They present a multilingual play with an exciting masala of Asian music and dance - an entertainment for all the family, that anyone can enjoy.

SAT
6th
MAY

BIG PIG PRODUCTIONS

Saturday 6 May 1.30 - 4pm
Valley Shopping Centre Precinct,
Rawtenstall

An afternoon of walkabouts and performances by this popular company to brighten up the shopping crowds. Its Free!

SUN
7th
MAY

CRAWSHAWBOOTH

STREET PARTY

Sunday 7 May
(See under projects)

MON
8th
MAY

ROSSFEST

STREET FAIR

Monday 8 May 11am - 4pm
Bank Street, Rawtenstall

Rossendale takes to the streets for a day of excitement and entertainment, and Mid Pennine presents the fabulous Grinnigogs. They have appeared at events throughout the world and specialise in street entertainment of the highest quality. They bring their daring fusion of Arabic, Andalucian, Celtic and mediaeval dance music to get bodies dancing.

Family Fun Days

BURNLEY MAY DAY

MON
8th
MAY

NORTH STARS STEEL YOUTH ORCHESTRA

Monday 8 May 12 - 4.30pm
Towneley Park
Burnley's traditional Bank Holiday in Towneley Park, and the celebrations will be driven by the energy of the 23 piece junior section of the North Stars Steel Orchestra. They bring the jazz and calypso music of Trinidad to Burnley.
Presented in association with Burnley May Day Committee and C.R.S.

TODMORDEN CARNIVAL

SAT
27th
MAY

NORTH STARS STEEL ORCHESTRA

Saturday 27 May 1 - 5pm
Centre Vale Park, Todmorden
This is Todmorden's big day - in the streets and in the Park. Joining the parade is one of the best established steel bands in the North. Playing everything from Calypso and Jazz to top 10 hits and classical pieces. Don't miss these exciting musicians.
Presented in association with Todmorden Charity Carnival Committee and Yorkshire and Humber Arts.

GREAT HARWOOD SHOW

MON
29th
MAY

HARMONY HOUNDS

Monday 29 May
12 - 4pm
Wood Street Show Ground, Great Harwood

To entertain the folk of Great Harwood as they congregate at the annual show the Harmony Hounds will play a wide selection of twenties jazz music.
Presented in association with Great Harwood Show Committee



ACCRINGTON CARNIVAL

SAT
17th
JUNE

THE GRAND THEATRE OF LEMMINGS

Saturday 17 June 12 - 5pm
Sandy Lane Playing Fields, Accrington
It's Carnival time again and with their unique blend of street theatre and cabaret Accrington welcomes this comedy duo. Their hilarious antics include the highest heels in the Universe and the 'Ostrich Display Team'. Don't miss the fun.
Presented in association with Accrington Carnival Committee.

Presented in association with Accrington Carnival Committee.

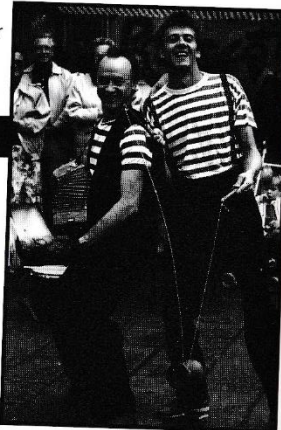
BACUP CARNIVAL

SUN
25th
JUNE

FABULOUS SALAMI BROTHERS

Sunday 25 June 12 - 5pm
Streets of Bacup

Carnival time in Bacup and the Salami's are Mid Pennine's contribution to the fun. Their unique brand of entertainment brings music, magic, illusion, juggling and escapology as they perform feats of strength, skill and stupidity!
Presented in association with Rossendale Borough Council



BRIERFIELD GALA

SAT
12th
AUG

PEACE ARTISTES

Saturday 12 August 12 - 4pm
Bent Head Playing Fields, Brierfield
One of our biggest and best local galas, and Mid Pennine presents Bradford's brilliant Peace Artistes. One of the foremost street bands in the country, with a bizarre taste in clothing, they are not afraid to show off, shout, dance, laugh and jump around. They are set to entertain you throughout the afternoon with their joyous music full of infectious rhythms and singable tunes.
Presented in association with Brierfield Gala Committee.

HASLINGDEN STREET FAIR

SAT
26th
AUG

BING BANG BONG BIKE

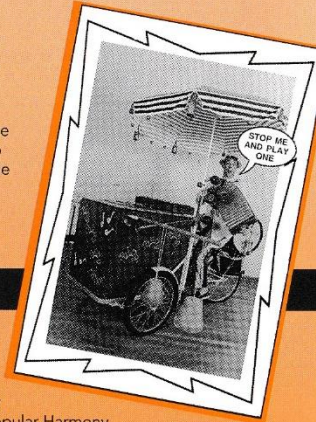
Saturday 26 August 11am - 3pm
Built onto an old ice cream trike are many and varied homemade instruments, bagpipes, taxi horns, squeeze boxes and even flowerpots. Played by Andy with help from the audience, musical stories will unfold using the bike's own model theatre.
Presented in association with Rossendale Borough Council

SAINT MONDAY

MON
28th
AUG

CHICAGO EXPRESS

Monday 28 August 11am - 4pm
Burnley Wharf
Festival day at the Wharf with jazz sounds provided by Chicago Express, all one time members of the ever popular Harmony Hounds.
Presented in association with Friends of Weavers Triangle.

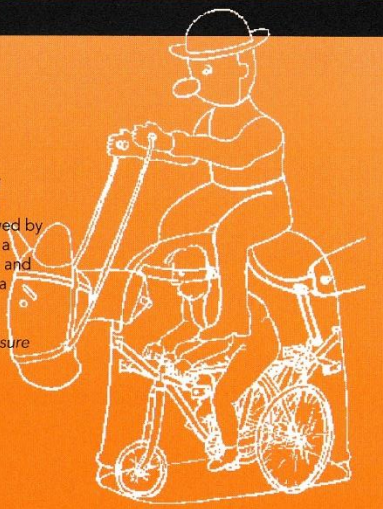


OUTDOOR THEATRE

SAT
1st
JULY

I.O.U. THEATRE COMPANY AUTOPERIPATETIKOS

Saturday 1 July 3pm and 7pm
Centre Vale Park, Todmorden
The brilliant, bizarre and totally fascinating I.O.U. theatre return with their own brand of outdoor show. A roving clatter of music and machines, a full size mechanical horse followed by a retinue of wheeled characters, performing a whirring dance - a cross between the foxtrot and fairground bumper cars. A family show with a difference.
Presented in association with Calderdale Leisure Services and Supported by Y.H.A.



SAT
17th
JUNE

PENDLE YOUTH & COMMUNITY FESTIVAL

Saturday 17 June 12 noon - 7.30pm
Place de Creil, Nelson
Now in its fifth year, Nelson's annual celebration takes over the pedestrian precinct and offers something for everyone. The multicultural programme features live music of all kinds, dozens of stalls and exhibitions and activities all the preceding week. **And its all FREE!**
Presented in association with LCC Youth and Community Service in Pendle District

SAT
5th
AUG

GREENPEACE DAY ON THE GREEN

Saturday 5 Aug 12 - 6pm
Centre Vale Park, Todmorden
A free afternoon of live music for all tastes and Mid Pennine present **BOOSTER CUSHION THEATRE** with 'Little Red Riding Hood and Friends'. Tradition is left far behind in this hilarious mixture of fairy tales as Red Riding Hood's wolf is lost and Cinderella tries on her new shoes. Using mime and clowning, Booster Cushion bring the characters in the books to life.
Presented in association with Todmorden Greenpeace Support Group

7th -
13th
AUG

SEVEN DAYS OF SOUND

7 - 13 August
Accrington
The week long celebrations take a look at the local music scene in East Lancashire and will include live bands, workshops and street bands. The week culminates in Sound '95 at Oak Hill Park.

For full details of Seven Days of Sound, watch out for the special leaflet or phone Andy on 01282 421986.

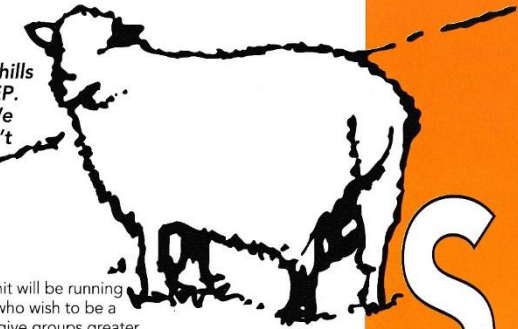
SUN
13th
AUG

SOUND '95

Sunday 13 August 12 noon - 6pm
Oak Hill Park, Accrington
The highlight of Hyndburn's summer calendar is back for its fourth successive year. This year sees some of the best local musicians, stalls, children's rides, entertainment and lots of fun for all the family....come along and join the carnival atmosphere. And it's absolutely free!!!

Presented in association with Hyndburn Borough Council

This Autumn a large scale festival takes to the hills of the Mid Pennine area on the theme of SHEEP. Sheep of any size and made of any material. We want you to get involved and make them. Don't miss out, come along and learn new skills.



SAT
6th
MAY

PETER FORBES

Saturday 6 May
Cost £15 /£8 (unwaged) per person.
Peter Forbes from the Funding Support Unit will be running a day's training on fundraising for groups who wish to be a part of SHEEP! The course is intended to give groups greater confidence and know how in finding money and support in kind for their project.

13th -
14th
MAY

PHILIP COX

13 - 14 May
MID PENNINE GALLERY
Places are £20/£12 (unwaged) per person.
Philip makes life-size papier mache people and animals which convey wit and humour. He uses materials most people throw away and transforms them into characters with their own personalities. Join him on this weekend, discover what hidden personality there is in a SHEEP and be inspired to make your own.



SAT
3rd
JUNE

JOANNE TINKER

Saturday 3 June
MID PENNINE GALLERY
£10/£6 (unwaged) per person.
Joanne designs wearable art in bright vibrant colour and finds the aluminium can an ideal material - one of her designs is a cloak made from 2500 pieces. Learn how to produce earrings, brooches, necklaces and fashion garments by recycling everyday throwaway packaging.

2nd
& 9th
SEPT

SARAH ROBINSON

2 & 9 September
£20/£12 (unwaged) per person.
10am - 4pm
Working from a live model of a sheep, the participants will make individual drawings, developing them in different ways and materials. These will then be translated by Sarah into two large scale woodcut prints, to be printed and displayed in prominent places throughout the 'Sheep' festival.

S
H
E
E
P

FOR MORE INFORMATION AND TO BOOK YOUR PLACE,
CALL JACKY OR JULIAN ON 01282 421986.



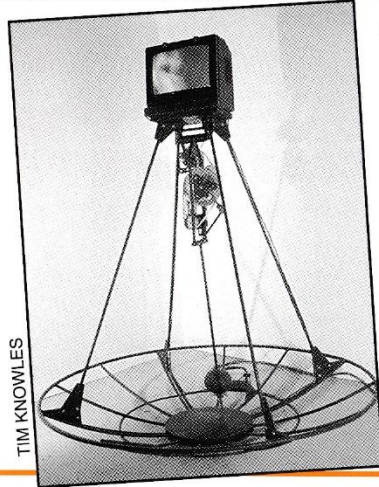
ADMISSION
IS FREE

MID PENNINE GALLERY

ADMISSION
IS FREE

YORKE STREET, OFF MANCHESTER ROAD, BURNLEY.
OPEN MONDAY TO SATURDAY 10AM - 5PM, THURS 1 - 5PM

APRIL 29 TO MAY 27



TIM KNOWLES

THE MAN MADE MAN

TIM KNOWLES

Kinetic Sculpture

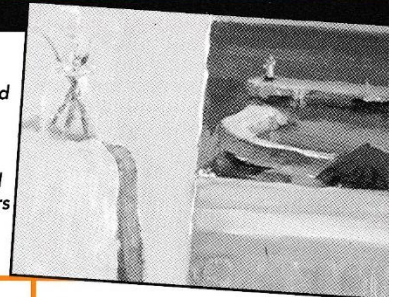
Wit, humour and eccentricity characterise these sculptures which reveal a scepticism about modern life and machinery. Benedict Whybrow's work compels the viewer to observe the progress of movement through each piece in his intervention into our architectural space. Johnny White's love of messing around with machines, making and modifying mechanical things is clearly evident in his work which was recently featured on TV.

From bubble machine to crocodile, golfer or juggler, Darcy Turner's wire sculpture will inspire you to create your own individual pieces. Sound and image in the form of video monitors subvert ordinary objects by using movement, distortion and alteration. Tim Knowles work often amuses but sometimes unsettles an audience.

JUNE 3 TO JULY 1

'HERE COMES SUMMER'

Enjoy the solitude of remote islands. Explore picturesque towns and villages in far away places. Happy times spent on sandy beaches. Even the pleasure of a fairground ride. A dozen painters explore holiday settings in very physical and emotional ways, bringing a freshness to a very familiar theme. Richly coloured oil paintings and delicate watercolours contrast with deep, dark and secretive colours to capture and revive memories of favourite places. Most of these paintings are for sale.



LIAM SPENCER

JEWELLERY

LESLEY STRICKLAND

Lesley's work uses cellulose based material and has a wide range of patterns which can be manipulated into many forms. Inspired by organic forms such as Mesozoic fossils and crustacea, her works are both elegant and timeless.



ELIZABETH MALDONADO

Based upon pure shapes and geometry these pieces are inspired by Elizabeth's architectural background and interest in structural composition. Worked mostly in silver and gold and set with precious stones, she has recently experimented with an element of 'music' by adding tiny silver beads inside hollow shapes to produce a rattle-like effect.

CRAFTS

WEARABLE ART

Deborah Gonet makes richly embroidered and colourful waistcoats and scarves in sumptuous fabrics including shot viscose, cotton velvets and silk crepe de chine. She uses techniques which include applique and cut work stitching on dissolvable fabric. By contrast aluminium drinking cans provide the material for these one off pieces of wearable art by Joanne Tinker, who takes her inspiration from graffiti art and its bold shapes and colours.

JEWELLERY

ASTRID MAHRER

These pieces are a series of variations on a theme of miniature boxes and are chased from silver sheet and then etched, drilled or punched.

KATHIE MURPHY

Playful and tactile pieces in a variety of shapes using colour and materials such as dyed translucent resin and black nitrile rubber combine to produce these stunning pieces.

CRAFTS

TOYS

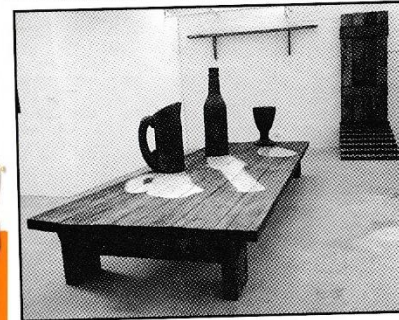
Jim Edmiston is interested in the integral part that animal, bird and foliage shapes play in tribal and folk art. He translates these into decorative patterns on the mobiles and wooden toys he makes.



JULY 8 TO AUGUST 12

ROSEMARY TERRY

This one-woman installation discloses dark objects and structures. The disruption of scale and the displacement of materials are intended to evoke a sense of mystery and disorientation in the viewer, and to produce a new, even childlike, vision of the everyday which can find menace in the mundane or make 'home' strange.



The kitchen is a place of creativity and transformation, but also of danger and the unexpected. It is the heart of the house but also the place where most domestic incidents occur. In the installation 'Into the Interior' Rosemary tries to link the domestic 'interior' - traditionally the domain of the female - with the idea of other 'interiors' such as childhood memories, the unconscious mind, the disturbing otherness of which we fear and shun, or try to control and suppress. Rosemary will be holding workshops (see under Activities)

CRAFTS

HEIDI SCHRAML

The spontaneous approach to welding allows for unpredicted elements to become part of these pieces, maintaining surprises for both viewer and maker. The magnificent sculptures which dominate a city skyline play a large part in the formulation of Heidi's initial ideas.

JEWELLERY

GILLIAN STEIN

A love of textures, pattern and metal combinations characterise this jewellery and an influence of early American folk art is apparent in Gillian's work.

KATHRYN WILLIS

Kathryn creates beautiful and wearable hanging vessels, jewellery and buttons. Using richly coloured enamels her inspiration derives from Eastern and Western decorative art and architecture, this results in unique pieces which are both ornamental and useful.

MEMBERSHIP MEMBERSHIP MEMBERSHIP MEMBERSHIP MEMBERSHIP

Members of **MID PENNINE ARTS** save **£££'s**
on ticket and cash purchases from the gallery

**FOR FURTHER INFORMATION
AND AN APPLICATION FORM CONTACT**

MID PENNINE ARTS 01282 421986

Join
today for
as little
as **£4**

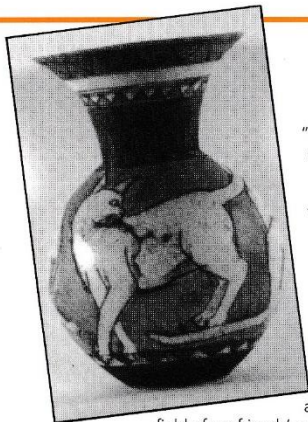
MEMBERSHIP MEMBERSHIP MEMBERSHIP MEMBERSHIP MEMBERSHIP

MID PENNINE GALLERY

AUGUST 19 TO SEPTEMBER 23

GLASS

The last few years have been very difficult for young people leaving art college. Galleries have closed down, customers are scarce and even the most avid collectors have cut down on their buying. Young artists choosing to work in glass are particularly affected by high costs involved in setting up a workshop and yet they still remain positive about the future and succeed in producing exciting and innovative work. They can find a market in continental Europe where the public are still keen to collect and where galleries are keen to exhibit good work. Sculptural and decorative forms contrast with functional vessels and jewellery invite your response to this group show by tomorrow's outstanding makers.



field of my friends' garden. There is a mystery within the boundaries: so do I make pots."

CRAFTS

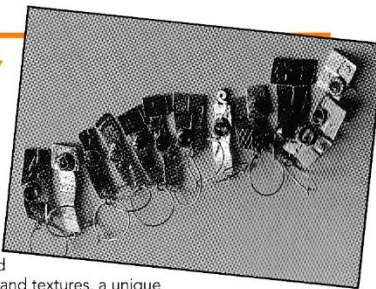
LAUREL KEELEY

"I am a suburban child, my view is domestic; I glimpse worlds through window squares, in gardens, in ponds. I watch the cats, their serious faces, their shapes as they pass; I visit the geese as they muddle and charm in the

JEWELLERY

JOHN FIELD

These are one-off pieces in brass, copper, white metal and semi-precious stones. A grid pattern is stamped into the metal and each of the squares embossed with symbols, shapes and textures, a unique arrangement inspired by displays of objects in collectors' trays.



HELYNE JENNINGS

Jewellery with a difference, these brooches and earrings are produced by laminating several layers of cartridge paper with PVA glue. They are hand painted with acrylics, gilded and embellished and finally lacquered to form a protective layer.

HOW TO FIND US

HOW TO FIND US

The Mid Pennine Gallery is a part of the Mechanics building in the town centre. Approach from Yorke Street or via the Mechanics foyer.

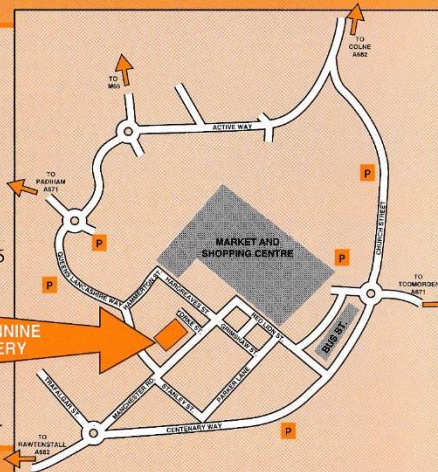
BY TRAIN: Burnley is served by three stations with regular services from Leeds and Preston. Enquiries 'phone 01282 425421

BY CAR: See map for car parking, all car parks are just a few minutes walk from the gallery.

BY BUS: Regular services stop outside the Mechanics from the local area/Manchester/Preston. Enquiries 'phone 01282 423125

EDUCATION Thursday mornings between 10am - 1pm are reserved exclusively for education purposes. Your class or group can work and enjoy a lesson without any interruptions. To book your time 'phone Julian on 01282 421986.

EASY ACCESS The Gallery has full ramped access at the rear of the building and adjusted toilet facilities. Guide dogs are welcome.



ACTIVITIES



APR
29th -
6th
MAY

STEFFAN JONES-HUGHES

artist in residence Rawtenstall

April 29 - 6 May

'Valley Print Shop' Valley Shopping Centre,

During Rossfest, popular Lancashire artist Steffan Jones-Hughes will take up residence in a shop in Rawtenstall's centre shopping precinct. There will be an opportunity to participate in print-making workshops, try your hand at monoprinting, cardboard printing or wrapping paper printing from blocks, or just drop in to watch or talk to him about his work. **The workshops are FREE.**

Sat April 29 - 10.30am	12 noon & 1 - 2.30pm	Print your own Alphabet
Mon May 1, Tues 2, Fri 5	10.30 am - 12noon	Print your own wrapping paper
Mon 1, Tues 2, Fri 5	1 - 2.30pm	Create your own summer - time relief print, poster, wrapping paper or birthday cards
Sat May 6	10.30 - 12 noon	Print your own Alphabet
Sat May 6	1 - 2.30pm	Print your own wrapping paper

SUN
7th
MAY

CELEBRATING CRAWSHAWBOOTH

Sunday 7 May

The community of Crawshawbooth are busy working on a large scale project which includes a parish map and village walk, banner making and a commissioned piece for Goodshaw Brass Band. The celebration will culminate in a street party with activities for all the family. Supported by the Gulbenkian Foundation Rural Arts Fund, Rossendale Youth & Community Service, Rossendale Borough Council

WED
10th
MAY

ARTS TEACHERS' FORUM MEETING

Wednesday 10 May, 4.00pm

Mid Pennine Gallery

Peter Forbes from the Funding Support

Unit will give a presentation on fundraising for school arts activities. This is the second in a series of three presentations designed to inform and stimulate teachers in placing artists in residence in their own schools.

MON
22nd
MAY

CAMERATA IN THE COMMUNITY

Myths and Masque

Following the success of Distant

Echoes last year, Manchester Camerata musicians will be working with artists from Cheshire Dance Workshop in ten primary and special needs schools from East Lancashire. The project will look at the themes of Greek Myth and Tudor Masque and will culminate in two performances at Padham Town Hall on Monday 22 May.

SAT
17th
JUNE

ROSSENDALE STREET BAND

Lancashire's Musician in Residence,

Pete Moser, will be leading workshops in

music and percussion to develop a street band for Bacup Carnival and other local events. All are welcome to attend workshops on Thursday evenings and Saturday afternoons during June. For more information contact Jacky on 01282 421986.

Also supported by Rossendale Borough Council, LCC Arts Unit, North West Arts Board

8th, 9th
& 10th
AUG

ROSEMARY TERRY

Tues/Wed/Thurs 8, 9, 10 August

Wood carving workshops

with Rosemary Terry

Haworth Art Gallery, 10am - 4pm

Adults £8 per day/children £4

Learn basic woodcarving skills and work together with your family and friends to create your own sculpture to enhance your home or garden this summer. Rosemary Terry will lead three days of workshops for adults and children outdoors (weather permitting) at the Haworth Gallery during the summer.

SEP/
DEC
1995

VIDEO TRAINING PROJECT

September-December 1995

Nelson & Colne College

£30 per person waged,

£20 per person unwaged

Have you ever wanted to make a better video of an event or just wanted to know more about the process of using cameras and editing tapes? This ten week course is aimed at teachers, youth and community workers and members of voluntary organisations and will include input from a video artist as well as technical training from college tutors. Places are limited so call Jacky now on 01282 421986 to reserve your place.

In association With Pakistan Welfare Association (Nelson)

NOV

LUDUS DANCE IN PENDLE

In November this year Ludus will be in residence for a week to work with Pendle schools. 'Wild Child' is suitable for 8 year

olds and upwards. Special Needs, Primary and Secondary schools are all welcome to participate.

For more information contact Jacky on 01282 421986.



ASIAN ARTS CELEBRATIONS

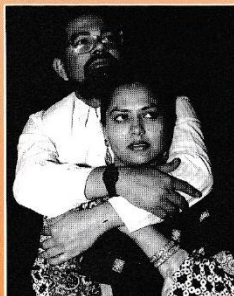
FRI
5th
MAY

MUSHAIRA

Friday 5 May 7.30pm
Public Library, Deardengate, Haslingden
Admission £1

The charm of Urdu poetry is brought to Haslingden for this Mushaira evening when guest poets travel from all over the country to participate. All welcome.

A Rossfest event presented with Rossendale Islamic Heritage Society and support from Lancashire County Council Ethnic Library Service.



SAT
6th
MAY

PESHKAR THEATRE COMPANY IN

'CHAPATI & CHIPS'

Public Hall, Haslingden
(See under Rossfest)

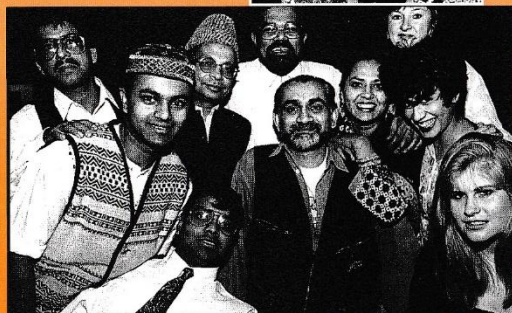
13th -
14th
MAY

EID GALA in PENDLE

Saturday 13 - Sunday 14 May
11am - 6pm

Victoria Park, Carr Road, Nelson
A festival for all of Nelson to share,
with family entertainment, Asian

music, a fun fair, stalls galore and much, much more.
Presented by Pakistan Welfare Association (Nelson)
and local community organisations.



SUN
4th
JUNE

EID MELA in ROSSENDALE

Sunday 4 June
Astoria Ballroom, Rawtenstall
1pm - 5pm
£1.50, Under 16's £1,
Under 5's free

A celebration to mark the second Eid festival of the Muslim calendar, and one in which the whole community of Rossendale can share. Fun for all the family, with live music from Delkhon Productions, childrens activities, crafts, stalls delicious food and more.

Presented in association with East Lancashire Asian Arts Forum and Rossendale Borough Council.

CABARET

FRI
23rd
JUNE

LIVE POETS SOCIETY

Silverman Hall, Pendle Street, Nelson
Friday 23 June

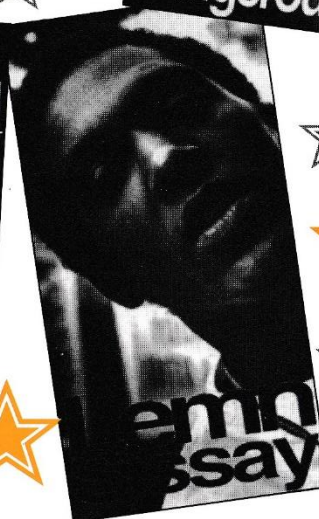
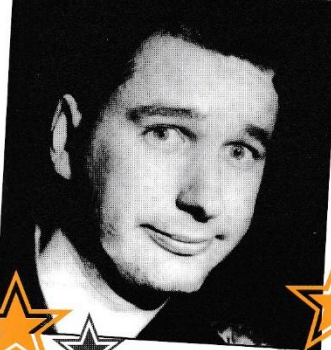
8pm
Tickets £4.50/£3Members & Concessions
Live Poets Society present 'The Incomplete Works of....' with HENRY NORMAL LEMN SISSAY & JOHNNY DANGEROUSLY.

Following the success of last year's tour this hugely popular three man show returns to the area with a 'poetic package tour for the imagination'. The poetry is accessible, the music poignant and the humour abounds in an evening of entertainment to 'inspire, excite and engage the intellect and nourish the spirit.'



Johnny
Dangerously

Henry
Normal



Cabaret

RISHTON LIBRARY MAY/AUG

MAY

POTTERY: KEITH DAWDRY

Keith is a local potter who produces mostly domestic ware fired in a reduction kiln. His glazes all contain hardwood ashes and some of his slips are based upon locally won earths. His work is very traditional although several visit to Bohemia are beginning to influence his pieces.

AUG

WOOD: ANN TOPLIS

Ann is a designer and maker of furniture and sculpted objects in English hardwoods. The natural features of the wood such as grain, burrs, spalting and knots form important parts in the designs.

RURAL ART IN EAST LANCASHIRE

Do you live in a village or smaller rural community? We are agents for a special Rural Arts Fund and will direct grants towards projects which:

- Have a majority of adult participants
- Have a lasting effect

- Involve a community or group working together
- Are creative and a new departure for your community
- Say something about your community or surroundings in the present or future rather than the past

Any group can apply! Contact: Melanie at Mid Pennine Arts on 01282 421986 for further details or to discuss any ideas you may have.

£500 £500

Visual Arts
on tour

on tour

WORLD BEAT

WORLD BEAT

SAT
20th
MAY

BEARCAT CAJUN PLAYBOYS

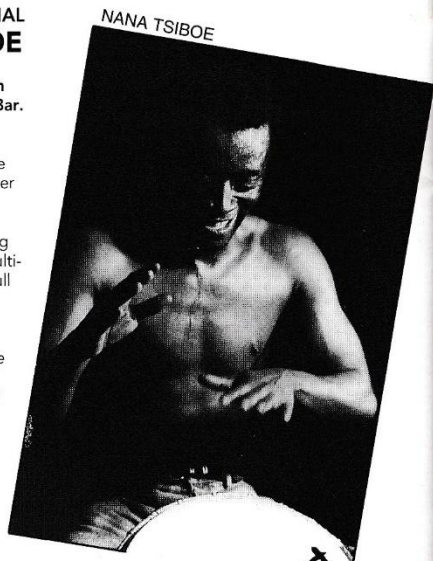
Saturday 20 May
Public Hall, Haslingden
Doors 8pm. Licensed Bar.
£4.50/£3 Members & Concessions
Straight down the line, uncluttered, driving Cajun music which defies the audience not to dance. 'Based around the Cajun accordion, fiddle and guitar, the authentic, gusty sound of the Bearcats has gone down a storm all over the country'. - Derby Evening Telegraph.

FRI
9th
JUNE

WORLD BEAT SPECIAL NANA TSIBOE

Friday 9 June
Town Hall, Accrington
Doors 8pm. Licensed Bar.
£4.50/£3 Members
& Concessions
The best possible dance music for a warm summer night? Try West African Highlife. Irresistible rhythms, powerful percussion, lifting melodies and scorching solos. Ghanaian master drummer and multi-instrumentalist, Nana Tsiobe brings his full eight-piece live band Trouble Dat! to Accrington. Try keeping your feet still!

Presented In Association with Rossendale and Hyndburn Borough Councils and supported by Lancashire County Council Arts Unit.



NANA TSIBOE

JAZZ AT THE BLUE NOTE

THU
18th
MAY

DICK PEARCE with the NIKKI ILES TRIO

Blue Note Club, Todmorden
Admission £4.50/£3 Members & Concessions
Thursday 18 May

This summer special promises to be one of the best yet with the tremendously talented Dick Pearce on trumpet and flugelhorn. Familiar to many as a long-serving member of the great Ronnie Scott Quintet, Dick is joined by the increasingly popular Nikki Iles and her Yorkshire-based trio.



HYNDBURN LEISURE PROMOTIONS

THE VERY BEST OF ENTERTAINMENT

MAY
Sat 6th A Concert to celebrate V.E. Day
'Sing As We Go' - Accrington Town Hall - 7.00pm
Sun 7th 1995 Festival of Cycling & Running Featuring Finalist of Stage 4 of 'Tour of Lancashire' plus Road & Cycle Races & Entertainment. Accrington Town Centre from 9.15am

JUNE
Sat 3rd **Bodger & Badger** in Mad Mash One - The Children's Favourites at Oswaldtwistle Civic Theatre - 2.30pm

CARNIVAL WEEK - A Host of Entertainment

Sun 11th 'Reach Out' - A Tami Mowtown Show from the Heart of Soulstown to Oswaldtwistle Civic Theatre - 7.30pm

Wed 14th **Edmund Hockridge & Family** 'Songs from the Shows' at Oswaldtwistle Civic Theatre - 7.30pm

Fri 16th **The Houghton Weavers** - The lads are back at Oswaldtwistle Civic Theatre - 7.30pm

Sat 17th The Famous 'ACCRINGTON CARNIVAL' parading through the Town Centre to a Family Fun Day at Sandy Lane.

Wed 21-
Sat 24th **Beer Festival** - for real ale lovers with entertainment and food at Accrington Town Hall

Wed 21st **Tapestry of Music** for Mid Summer Evening at Haworth Art Gallery - 7.30pm

JULY
Sun 2nd **Alan Price & The Electric Blues Orchestra** Oswaldtwistle Civic Theatre - 7.30pm

Thur 6th 'Lindisfarne' on tour
Oswaldtwistle Civic Theatre - 8.00pm

AUGUST
Sun 13th 'SOUND 95' - Oak Hill Park, Accrington

SEPTEMBER
Sat 23rd **The Treharris Male Voice Choir** from the Welsh Valleys to Accrington Town Hall - 7.30pm

For tickets and details of any of the above contact:
Tourist Information Centre, Town Hall, Accrington
Tel: 01254 380293

DANCING FOR EVERYONE AT ACCRINGTON TOWN HALL BALLROOM (The Best in the North West)

SEQUENCE DANCING
Every Thursday at 7.30pm with hosts Frank & Dorris Raw

50/50 DANCING
A monthly Saturday Dance with licensed bar - 8pm
13th May - The Belvedere Band;
3rd June - The Foot Tappers;
29th July - Jack Smith Band;
19th August - Mark Kitto Band;
2nd September - The Belvedere Band

FOOTSTOMPING CAJUN NIGHTS
A variety of Bands plus Cajun Kitchen and licensed bar - 8pm
Friday 19th May - The French Alligators
Friday 17th June - The Boat Band

BALLROOM DANCING WITH THE BIG BANDS
Friday 8th September - The Joe Loss Orchestra

BURNLEY MECHANICS

Tuesday 9th May at 8.30pm

BROUHAHA in LIGHT AT NIGHT

A steam-rolling adventure story and touching comedy on the themes of birth, death and sometimes getting the two mixed up.
Storytelling • Mime • Clowns • Music • Laughter & Adventure in a show designed especially for families (aged 7 and up) "It takes us back to the happiness we felt as children" *Journal de Morges*

Friday 9th June, 8.30pm

Amazing Jazz with **JEAN-PIERRE LABADOR QUINTET**

Friday 23rd June, 8.30pm

The Fire & Soul of Flamenco **JUAN MARTIN**

Master of the Flamenco Guitar
"Terrifically good... Superb" *Daily Telegraph*

Monday 26th June, 8.00pm

Ten Centuries of Choral Music with The Russian State Chamber Choir

Ticket Office: 01282 30055

RED WATER ARTS

Education Training for Teachers and Group Leaders

- Power of Puppety 29/30 April
- Journey's of Discovery 4/5 May
- Music for non-musicians 25/26 May
plus many more

Contact: Todmorden 01706 815328

Mid-Pennine Arts gratefully acknowledges the financial assistance of the Borough Councils of Burnley, Hyndburn, Pendle and Rossendale, the Town Council of Todmorden, North West Arts Board, Yorkshire and Humberwide Arts and Lancashire County Council Arts Unit.

The work of Mid Pennine Arts is supported by the Corporate Membership of Co-operative Retail Services Ltd. and by the Membership of 72 non-profit making local organisations. Assisted by Joe Houghton and Grace Dearborn Ltd. through Business in the Arts: North West.

The information in this brochure is correct at the time of going to press but MPA reserves the right to cancel or amend the programme due to unforeseen circumstances.

programme

QUICK GLANCE

SOUND



ACTIVITIES
cabaret
WORLD BEAT

DATE	EVENT	VENUE
EXHIBITIONS		
April 29 - 27 May	<i>The Man Made Man</i>	Mid Pennine Gallery
April 29 - 8 May	<i>Rossfest: Steffan Jones-Hughes</i>	Rawtenstall Precinct
May	<i>Pottery: Keith Dawdry</i>	Rishton Library
June 3 - 1 July	<i>Here Comes Summer</i>	Mid Pennine Gallery
July 8 - 12 Aug	<i>Into the Interior</i>	Mid Pennine Gallery
August	<i>Wood: Ann Toplis</i>	Rishton Library
Aug 19 - 23 Sept	<i>Glass</i>	Mid Pennine Gallery
MAY		
Tues 2	<i>Third Party: Comedy of Errors</i>	Rawtenstall College Studio
Fri 5	<i>Mushaira</i>	Public Library, Haslingden
Sat 6	<i>Chapati & Chips</i>	Public Hall, Haslingden
Sun 7	<i>Celebrating Crawshawbooth</i>	Crawshawbooth
Mon 8	<i>Rossfest Street Fair</i>	Bank Street, Rawtenstall
Mon 8	<i>Burnley May Day</i>	Towneley Park, Burnley
13-14	<i>Eid Gala</i>	Victoria Park, Nelson
Sat 20	Worldbeat: <i>Bearcat Cajun Playboys</i>	Public Hall, Haslingden
Sat 27	<i>Todmorden Carnival</i>	Centre Vale Park, Todmorden
Mon 29	<i>Great Harwood Show</i>	Wood Street Show Ground, Great Harwood
JUNE		
Sun 4	<i>Eid Mela</i>	Astoria, Rawtenstall
Fri 9	<i>Worldbeat: Nana Tsiboe</i>	Town Hall, Accrington
Sat 17	<i>Accrington Carnival</i>	Sandy Lane, Accrington
Sat 17	<i>Pendle Youth & Community Festival</i>	Place de Creil, Nelson
Fri 23	<i>Live Poets Society</i>	Silverman Hall, Nelson
Sun 25	<i>Rosendale Carnival</i>	Bacup
JULY		
Saturday 1	<i>I.O.U. Autoperipatetikos</i>	Centre Vale Park, Todmorden
AUGUST		
Sat 5	<i>Greenpeace Day on the Green</i>	Todmorden
Mon 7 - Sun 13	<i>Seven Days Of Sound</i>	Accrington
8, 9, 10	<i>Woodcarving Workshops</i>	Haworth Art Gallery
Sat 12	<i>Brierfield Gala</i>	Bent Head Playing Fields, Brierfield
Sun 13	<i>Sound 95</i>	Oak Hill Park, Accrington
Sat 26	<i>Haslingden Street Fair</i>	Haslingden
Mon 28	<i>St. Monday</i>	Weavers Triangle, Burnley

