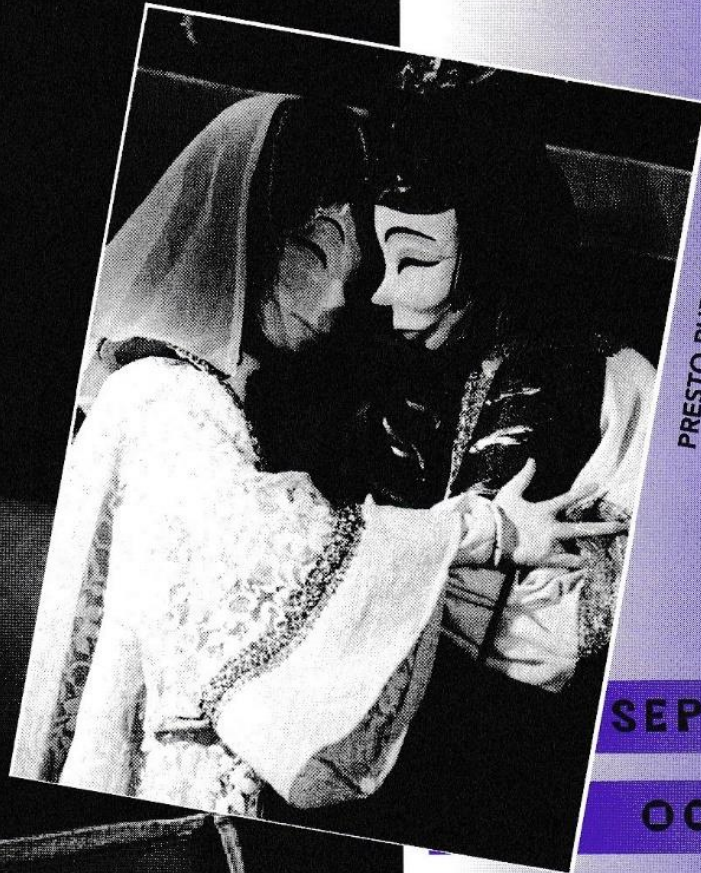


MANCHESTER CAMERATA - SACHIO FUJIOKA

MID PENNINE *Arts*



PRESTO PUPPET THEATRE

PROGRAMME OF EVENTS

SEPTEMBER

OCTOBER

NOVEMBER

DECEMBER

1995

TICKETS - IT'S SO EASY TO BOOK



IN PERSON: Call in at the Mid Pennine Gallery, Yorke Street, Burnley. Open Monday to Friday 10am-5pm, Saturday 10 - 4pm, Thursday open 1-5pm (or buy your tickets in your area - see under 'Buy Your Tickets Locally'



BY PHONE: (01282) 421986 BY FAX: (01282) 429513 Ring us to buy tickets for our events and pay for them by credit card. All Access, Eurocard, Mastercard and Visa cards are accepted. **RESERVE TICKETS:** You can reserve tickets. Reservations will be held for three days.



BY POST: Write to us (NO STAMP REQUIRED) at FREEPOST BU 874, Burnley, Lancashire, BB11 4DR.

Please make cheques payable to MPA and enclose an S.A.E.

CONCESSIONS: Concessionary rates are available to our MEMBERS, those in full time education, unemployed people, senior citizens, registered disabled people and members of The Met, Bury.

GROUP BOOKINGS: Buy ten, get the eleventh free. For larger parties contact Kary in the Marketing Department to discuss rates.

BUY YOUR TICKETS LOCALLY

MPA tickets are available from:

Accrington	The Information Shop, 3 Abbey Street Hyndburn Leisure, Town Hall
Bacup	Public Library, St. James Square First Steps (Business Consultants), Fiscal House, 27 St. James Street
Baroldswick	Tourist Information, Fearnlea Avenue
Blackburn	Althams Travel Services, 12 Ainsworth Street
Bury	The Met, Derby Hall, Market Street
Clitheroe	Tourist Information Centre, Church Walk
Coleburn	Althams Travel Services, 13 Albert Road Pendle Leisure Services, Bank House, 61 Albert Road
Haslingden	Public Library, Deardengate
Hebden Bridge	Tourist Information Centre, 1 Bridgegate
Nelson	Althams Travel Services, 1 Scotland Road Tourist Information Centre, Town Hall Pendle Wavelengths, Leeds Road
Rawtenstall	Central Library, Queens Square
Todmorden	Tourist Information Centre, 41-46 Kay Street Althams Travel Services, 15 Halifax Road Bear Wholefoods, 29 Rochdale Road

BECOME A MEMBER

Becoming a member of MPA is easy and will save you £1.50 at most events and 5% discount on cash purchases from the Gallery.

Members also get

- The chance to borrow equipment (theatre equipment, children's play inflatables and more)
- Advance information - as a member you get the forthcoming season brochure mailed direct to your home
- Personal invitations to join MPA staff and other members at gallery openings and other special events

All this for £9.95 (12 joint) annual membership. Becoming a member is simple. Just call in and see us during office hours, ring or write to us for a membership form. Send it back with your payment and you become a member immediately.

ENTERTAINMENT IN PENDLE

WED
1st
NOV

CARS IN WATER

present 'The Immigrant Song' - a dialogue of life.

Words by Mick Martin

Music by Detrimental

Wednesday 1 November 7.30pm

Civic Theatre, Nelson

£4.50/£3 concessions

The story of two immigrants, one Irish, one Pakistani, living on the same street. With a pungent splash of music and words 'The Immigrant Song' highlights the difference between the two races and cultures and thereby exposes the similarities. A tale of people learning the language, having children, arguing with them, mothers in Church, sons in gaol, fathers in the pub and daughters in the club...! Life, death and dance music, it's all happening!

FRI
10th
NOV

LUDUS DANCE COMPANY

perform Wild Child

Friday 10 November 7.30pm

Mansfield High School, Brierfield

£1.50/£1 concessions.

An explosive 50 minutes of spectacular dance theatre in which our awesome orphan battles with the 'law of the

jungle' both natural and man-made. An enthralling, exciting and entertaining show that looks at the Wild Child within us all. Prey or Predator, Being or Beast - What is the Wild Child? Where does he belong and what does he know? Where do his loyalties lie and will he ever wear a suit???

THUR
7th
DEC

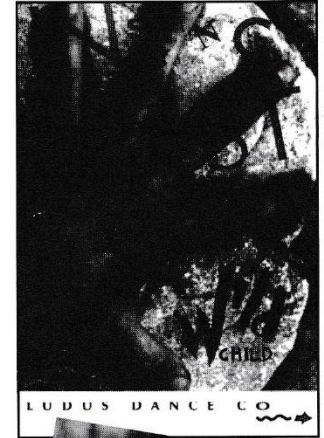
POET - ADRIAN MITCHELL

Thursday 7 December 8pm

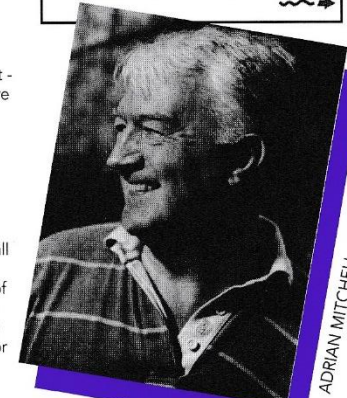
Silverman Hall, Nelson

£4.50/£3 concessions

Adrian is one of Europe's widest read poets and performs all over the globe. His political poems have been sung and recited at demonstrations and mass rallies although many of his best loved poems include his family, his friends and his animals. His poetry performances are electric and passionate declarations, they are also incredibly funny. Adrian creates nights of erupting verse, raging poems and comic jazz for shakers of all ages.



LUDUS DANCE CO



ADRIAN MITCHELL

HOW TO FIND US

HOW TO FIND US

The Mid Pennine Gallery is a part of the Mechanics building in the town centre. Approach from Yorke Street or via the Mechanics foyer.

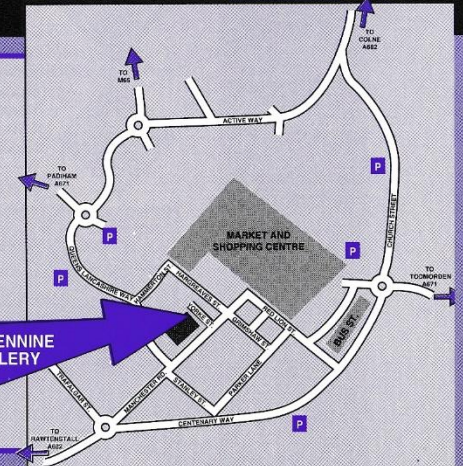
BY TRAIN: Burnley is served by three stations with regular services from Leeds and Preston. Enquiries 'phone 01282 425421

BY CAR: See map for car parking, all car parks are just a few minutes walk from the gallery.

BY BUS: Regular services stop outside the Mechanics from the local area/Manchester/Preston. Enquiries 'phone 01282 423125

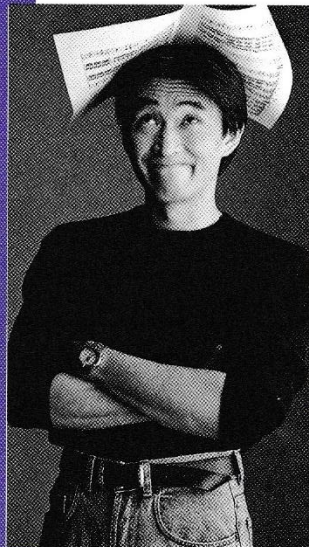
EDUCATION Thursday mornings between 10am - 1pm are reserved exclusively for education purposes. Your class or group can work and enjoy a lesson without any interruptions. To book your time 'phone Julian on 01282 421986.

EASY ACCESS The Gallery has ramped access at the rear of the building and adjusted toilet facilities. Guide dogs are welcome.



MID PENNINE GALLERY

CAMERATA IN COLNE



SACHIO FUJIOKA

Manchester Camerata returns for another season of concerts at the Colne Municipal Hall.

The appointment of Sachio Fujioka as Principal Conductor has been greeted with much enthusiasm and we are delighted to welcome him to conduct two of the four concerts.

The programme also features two illustrious international guests in pianists Ingrid Haebler and Lev Vinocour. An exciting series in store, and we welcome you either as regular attenders or 'first timers' (see special 'First Timer Offer' below) to enjoy the excellence we have come to expect from this acclaimed Orchestra.

All concerts start at 7.30pm.
Pre-concert talk 6.45pm

THUR 12th OCT

Thursday 12 October
Mozart Symphony No 36
Mozart Piano concerto No 27
R Strauss Metamorphosen

Conductor *Sachio Fujioka*
 Piano *Ingrid Haebler*

THUR 23rd NOV

Thursday 23 November
 'String Lollipops'
Mozart Divertimento in D
Haydn Horn Concerto
Elgar Serenade for Strings
Greig Holberg Suite
 Plus favourite lollipops by Kreisler, Grainger, Holst, Leroy Anderson and Johann Strauss

THUR 15th FEB

Thursday 15 February
Arensky Variations on a theme of Tchaikovsky
Shostakovich Piano Concerto No 1
Tchaikovsky Serenade for Strings
 Conductor *Sachio Fujioka*
 Piano *Lev Vinocour*

THUR 14th MAR

Thursday 14 March
Mozart Quintet K516
R Strauss Sextet from Capriccio
Schubert Quintet
 Camerata Ensemble
 Director *Richard Howarth*

Balcony season ticket for all four concerts £27/£22 concessions. Stalls season ticket for all four concerts £22/£16 concessions. Balcony for one concert £8/£6.50. Stalls for one concert £6.50/£5. 'First Timer offer' for all four concerts £16 (stalls seating)

Members of Mid Pennine Arts can claim concessionary ticket prices. Advanced booking is advised and the Box Office opens on Monday 4 September.

Presented in association with Pendle Borough Council, Manchester Camerata and the Musicians' Union. The February concert is sponsored by Silentnight and publicity for the series by Fort Vale Engineering.



MUSIC AT THE HAWORTH

Two evenings in the delightful setting of the Haworth's Music Room



JOHN MILLS

WED 27th SEP

JOHN MILLS
 Classical Guitar Recital
Wednesday 27 September 7.30pm
Haworth Art Gallery, Accrington
£4.50/£3 concessions
 Leading British concert-guitarist John Mills makes a welcome return to the Haworth Art Gallery for a recital of guitar music from Spain and England.

The programme will consist of romantic 20th century works and some rarely heard 19th century Spanish music. The tercentenary of Henry Purcell's death is celebrated in a group of pieces, transcribed largely from keyboard manuscripts.

WED 8th NOV

DAVID PARSONS
 'Baroque and Bossa-Nova'
Wednesday 8 November 7.30pm
Haworth Art Gallery, Accrington
£4.50/£3 concessions
 After studying at the Royal College of Music, lute and guitar virtuoso David Parsons made a highly successful Wigmore Hall debut. He has since taken his one man show worldwide and has broadcast in the USA, Norway, Austria, Spain and in Britain where he has introduced BBC Radio 2 listeners to the delights of the Baroque and early Classical repertoires. The programme will include work by Weiss, Torroba and Almeida.



DAVID PARSONS

Classical

EXCURSIONS

Our excursions are very popular so please book early

THUR 30th NOV

HALLE ORCHESTRA
 - Free Trade Hall, Manchester
 Kent Nagano - Conductor
 Alfred Brendel - Piano
Thursday 30 November
Tickets £11
 Alfred Brendel makes a long-awaited return to Manchester to join Kent Nagano and the Halle Orchestra in performing Mozart's piano Concerto No 27. Nagano also conducts Bruckner's expansive Seventh Symphony.

Closing date for booking Friday 27 October
 Pick up points: 6 pm Nelson, 6.10 pm Burnley, 6.25 pm Accrington, 6.35 pm Rawtenstall

FRI 26th JAN

LA BOHEME
 - Grand Theatre, Leeds
Friday 26 January 1996
Tickets £16/£13.60 concessions
 Phyllida Lloyd returns to direct her acclaimed production of Puccini's best-loved opera. Puccini meticulously evoked Bohemian life in Paris, its lovers and laughs, the exuberance of the Cafe Momus on Christmas Eve and the poignancy of Mimi and Rodolfo's separation, with his sure dramatic touch and immortal melodies. 'I cannot recall a truer or more affecting Boheme' The Times.

Closing date Monday 18 December
 Pick - up points: 4.50 pm Rawtenstall, 5.05 pm Accrington, 5.20 pm Burnley, 5.30 pm Nelson, 5.40 pm Colne.
 For further details please contact Janet on 01282 421986

Classical

TOWN HALL SPECIALS

FRI
27th
OCT

THE ALBION BAND

Friday 27 October 8pm
£6/£4 concessions
Town Hall Accrington

Continuing our highly successful Town Hall specials in Accrington, this one should be another winner. Long time favourites on the British scene, The Albion Band are one of the great folk-rock bands. This is Ashley Hutchings 50th birthday tour and the current line-up is widely acclaimed as the best in years. Two great songwriters, Julie Matthews and Chris White, provide most of the original music and with the distinctive guitar and vocals of Simon Nicol, they are guaranteed to draw the crowds.
Presented in association with Hyndburn Borough Council

MUSIC IN TODMORDEN

FRI
10th
NOV

TODMORDEN OLD BRASS BAND

"Choral Brass '95"

Friday 10 November 7.30pm
Town Hall, Todmorden

£5/£3 concessions. Children 16 and under FREE

Todmorden Old Brass Band under the baton of Mr James Hadfield will perform in concert with the 'Savoyards Appreciation Society'. The Savoyards specialise in Gilbert & Sullivan and their Musical Director, Mr James Newby is also the MD of the International G & S Festival at Buxton. They feature award winning soprano Stella Whitehouse from Burnley. Joined by special guests The Todmorden High School Choir this promises to be a very entertaining evening.
A TOBB promotion in association with Mid Pennine Arts

FRI
15th
DEC

NORTHERN CHAMBER ORCHESTRA

Friday 15 December 7.30pm
Town Hall, Todmorden

Balcony £8/£7 concessions

Stalls £6.50/£5.50 concessions Students £4

The NCO are renowned throughout the North West for the high standard of their live concerts. Playing without conductor, the ensemble tackles an extraordinary range of repertoire from Corelli to Stravinsky and beyond. They are now becoming known worldwide through their recordings for Naxos (17 CD's to date) This traditional Christmas concert will include pieces by Handel, Bach, Corelli, Mozart, Vaughan Williams and Warlock. An evening of festive music and the opportunity to sing seasonal carols in the imposing setting of Todmorden Town Hall, make a note in your diary.

Presented in association with NCO and Yorkshire and Humberside Arts



LIVE AT RAWTENSTALL STUDIO

THUR
28th
SEP

NAHID SIDDIQUI & CO

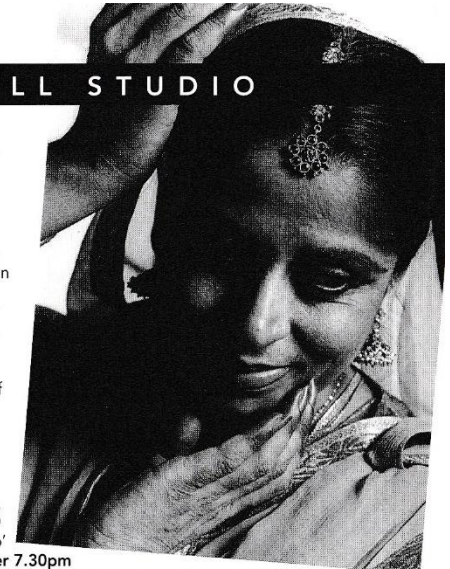
perform Timecycle and Other Extracts

Thursday 28 September 7.30pm

Accrington & Rossendale College, Rawtenstall

£4.50/£3 concessions

Nahid Siddiqui & Company are one of the leading exponents of kathak dance in the world today. Kathak is a North Indian classical dance style which derives its name from the word 'kath a' meaning 'story'. Accompanied by the tabla, the harmonium or sitar and classical singing, the dialogue between the dancer's feet and the tabla, matching and crossing rhythms, is tremendously exhilarating. This is a storytelling dance form steeped in poetry, legend and mythology. If you've never seen kathak dance before, make a point of seeing this show.



NAHID SIDDIQUI & CO

WED
25th
OCT

THEATRE SANS FRONTIERES

present 'The Black Tulip'

Wednesday 25 October 7.30pm

Accrington and Rossendale College, Rawtenstall

£4.50/£3 concessions

'The Black Tulip' is a rollicking and absurdly comic adventure bursting with intrigue, ambition and love. It has been adapted from the Alexandre Dumas novel by the National Theatre's Edward Kemp. Set in 17th century Holland this tale is bursting with the foul deeds, brutal murders and bristling suspense we have come to expect from the author of 'The Count of Monte Cristo' and 'The Three Musketeers'. Played in French this adaptation features Theatre Sans Frontieres' award-winning style of visually driven narrative coupled with a compelling live musical score.

'THE BLACK TULIP'



WED
22nd
NOV

HORSE AND BAMBOO THEATRE

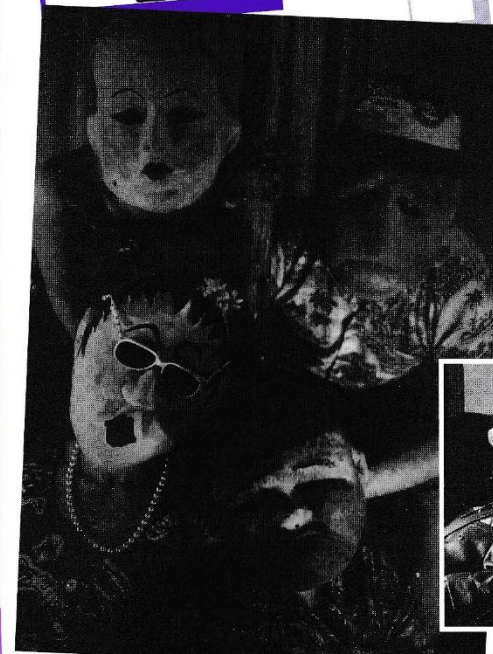
present 'Dance of White Darkness'

Wednesday 22 November 7.30pm

Accrington & Rossendale College, Rawtenstall

£4.50/£3 concessions

Based in Rossendale but touring far and wide, Horse and Bamboo weave magical stories using the folk theatre of puppetry and mask together with live music. 'Dance of White Darkness' explores the experiences of Maya Deren, mother of the underground film movement. In 1947 she visited Haiti and became immersed in the voodoo rituals. She began work on a remarkable thesis studying the folk beliefs and rituals of the people of Haiti. From her first contact with 'voodoo' the performance traces Deren's story.
Presented in association with Accrington and Rossendale College and supported by NWAB



HORSE AND BAMBOO THEATRE

Live

ADMISSION
IS FREE

MID PENNINE GALLERY

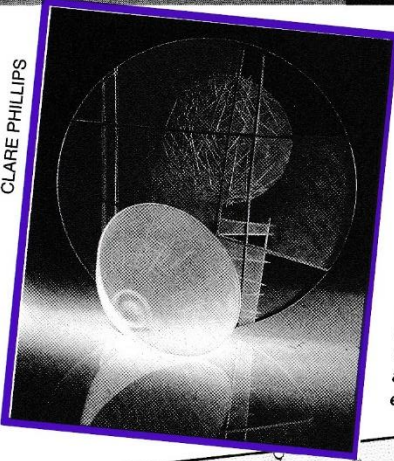
ADMISSION
IS FREE

YORKE STREET, OFF MANCHESTER ROAD, BURNLEY.
OPEN MONDAY TO FRIDAY 10am - 5pm, THURSDAY 1pm - 5pm
SATURDAY 10am - 4pm.

30 SEPTEMBER TO 4 NOVEMBER

AUGUST 19 TO 23 SEPTEMBER

CLARE PHILLIPS

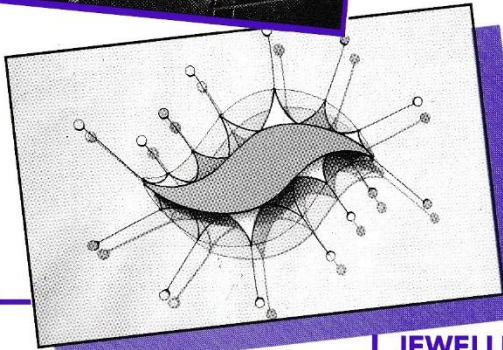


GLASS THE NEW ICE AGE

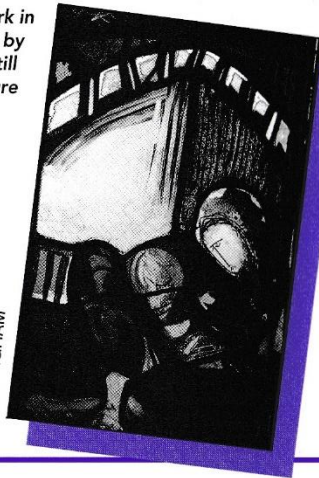
Tomorrow's outstanding makers show a range of sculptural, decorative and functional forms that demonstrate qualities of brilliance and colour. Each piece is a unique creation with a personality of its own: light penetrating and radiating from glass conveys an energy, a suggestion of movement within rich swirling jewel like hues.

Young artists choosing to work in glass are particularly affected by high start-up costs, yet they still remain positive about the future and succeed in producing exciting and innovative work.

DIAPHANOUS GLASS



K. BINGHAM

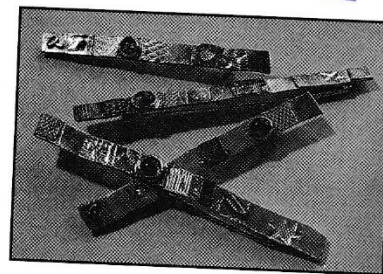


CRAFTS LAUREL KEELEY

The flash of the fish in rivers, lost in the depth of ponds; Pita's geese as they muddle, the serious faces of her cats. These are the fascinations that inspire life in Laurel's pots. It starts with the clay, the resistance and give in it, the solid weight that shifts in the fingers, then stretches and balloons, dries, shapes that hold their form like promises.

JEWELLERY JOHN FIELD

One - off pieces in brass, copper, white metal and semi-precious stones, each embossed with symbols, shapes and textures; a unique arrangement inspired by objects in collector's trays.



JOHN FIELD

HELYNE JENNINGS

Hand painted with acrylics, gilded and embellished, these brooches and earrings present a range of jewellery with a difference.

FIELD

An Installation by Ron Haselden and Peter Cusack

The culmination of our visual arts participation project, *Sheep!* is celebrated in October with a month long festival.

Extraordinary light sculptor, Ron Haselden fresh from commissions in France and Italy comes to Burnley to create a unique environment of spectacular light and sound in the Mid Pennine Gallery. He is joined by regular collaborator, composer and musician Peter Cusack.

Prepare to be both aurally and visually overwhelmed as Ron's incredible light sculptures are activated by the bizarre sounds of flocks of Sheep.

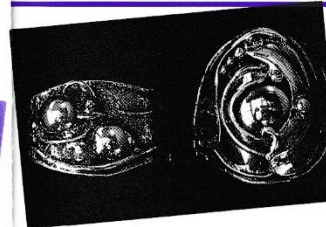


RON HASELDEN

JEWELLERY

MARIAN WATSON

Strongly influenced by natural forms, motifs resemble those of the art nouveau jewellers, ancient treasures encrusted by time and the elements. Others describe it as intensely modern - almost futuristic.



AGATA AZZOLINA

A sumptuous range of bronze and silver jewellery with motifs derived from the sun, moon and stars.

THE FLOCK SHOP

Wild, woolly, wacky and wonderful.

Jumpers, socks, slippers, mugs, cards, T.Shirts, badges - a serious surfeit of saleable sheep goods to buy.

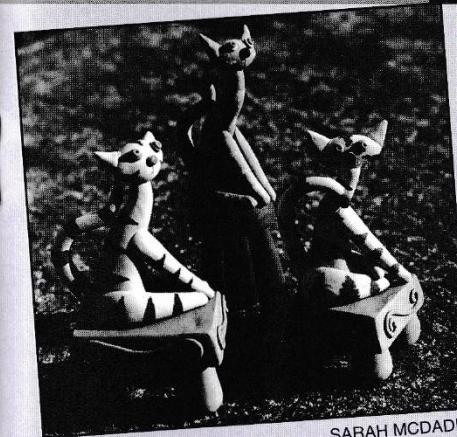
A regular Baa...zaar!

11 NOVEMBER TO 23 DECEMBER

CHRISTMAS CRAFTS

The perfect antidote to all those mass produced presents available in the high street. We offer an opportunity for a shopping extravaganza which will make giving and receiving an absolute joy.

A range of quality craft at very affordable prices by over 70 individual makers who create original and exciting keepsakes.



SARAH MCDADE

Take time to browse, make buying a pleasure, the comfortable solution to the Christmas mania.



ANN TOPLIS

SHEEP! - They've flocked in! The culmination of MPA's Visual Arts Festival is here. Hundreds of people have been creating sheep in all shapes and guises in the build up to October's festival - and they're still multiplying. If you fancy adding your sheep to the flock, it's not too late. Create your own or join one of the many projects happening throughout the Autumn. All the sheep will be exhibited in public places. Look out for them in a space near you.

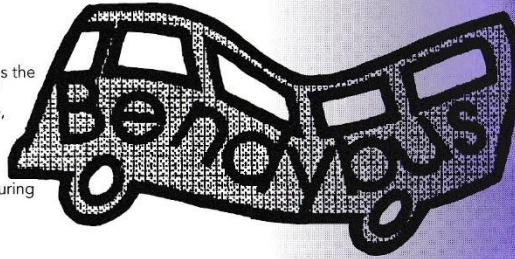
SHEEP EXHIBITIONS

20th
-30th
SEP

THE BENDY BUS

Wed 20 - Sat 30 September
Sheep on the move.

Mid Pennine goes mobile and brings the Festival to a place near you. This 17 metre Bus, that bends in the middle, will be touring the region to launch the Sheep festival. Come aboard and find out more. Meet the staff, make a sheep, view the touring exhibition - a bus full of surprises!



24 SEP
-20 OCT

FAY GODWIN

Photography
Pendle Arts Gallery, Nelson
24 September - 20 October

A rare opportunity to view the work of internationally known photographer Fay Godwin. Widely published with 14 books to date she received the first green 'Book of the Year Award' in 1990 for 'Our Forbidden Land.'

Fay's love of walking and landscape photography is clearly depicted in these photographs specially selected and printed for this exhibition.
A joint promotion with Pendle Arts Gallery



FAY GODWIN

30th
SEP -
4th NOV

AN INSTALLATION BY RON HASELDEN AND PETER CUSACK

- Mid Pennine Gallery, Burnley
30 September - 4 November
(see under Mid Pennine Gallery)

2nd -
28th
OCT

SHEEP PHOTOGRAPHS

Pendle Library
Habergham High School
October 2 - 28
Photographs will
be on display in the library and the
school throughout October.

SHEEP ACTIVITIES

Why not start the new term's art classes by taking part in SHEEP? The visual arts mass participation project for young people in the region is gathering pace in the build up to the festival in October. All sheep created in whatever form will be exhibited somewhere in the region.
Supported by the Lancashire Visual Arts Strategy



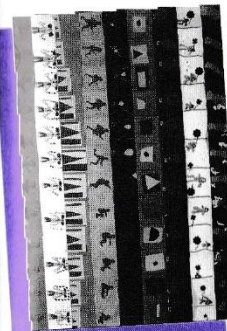
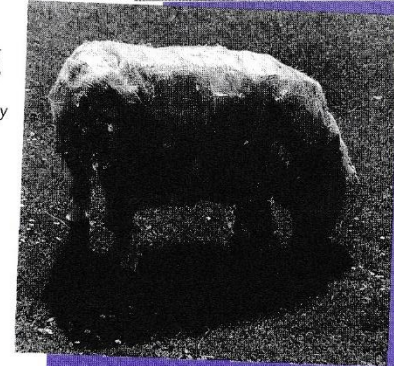
WED
4th
OCT

A TALK BY FAY GODWIN

Wednesday 4 October 7.30pm
Pendle Arts Gallery
Admission £3 members of PAG
& MPA £2

Fay will give an informative talk about her work and influences. Places are limited so early booking is advised.
A joint promotion with Pendle Arts Gallery

SHEEP



JACKDAW MEDIA - ZOETROPE

MPA are pleased to be working with this leading animation company from Merseyside on a schools project for Sheep! From its origins as a Victorian parlour toy, the Zoetrope has found a new significance. The Zoetrope is an optical device which creates the illusion of movement without using camera or projector. An ideal means of showing people how to animate.

2nd
AND
9th SEP

SARAH ROBINSON

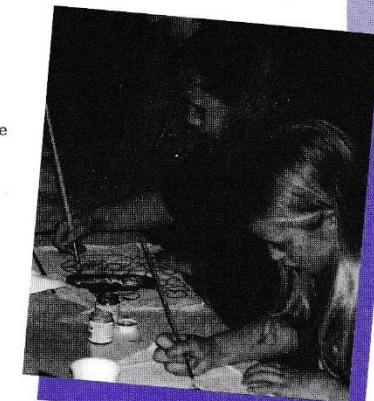
2 & 9 September
£20/£12 (unwaged per person)
10am-4pm

Working from a live model of a sheep, the participants will make individual drawings, developing them in different ways and materials. These will be translated by Sarah into two large scale woodcut prints, to be printed and displayed in prominent places throughout the 'Sheep!' festival.

CORNHOLME

As part of the Cornholme Festival local artists, Sandra Freeman and Vicky Purcell will be taking a weekend of workshops with local children creating sheep out of recycled materials.

**FOR MORE INFORMATION
PLEASE RING MID PENNINE 01282 421986**



CALLING ALL SCHOOLS

Can your class, year group, entire school make sheep? A quick and easy way to contribute and raise money for 'Children in Need'. Just call Mid Pennine Arts for your 'Miniature Flock Guidance Pack!' Thousands of tiny sheep will be flooding empty spaces across East Lancashire. We want your school to make them - it's fun, quick and inexpensive and you'll be making a valuable contribution.

Shop windows, libraries, schools, community centres ... Sheep! will be everywhere.

Shop windows, libraries, schools, community centres ... Sheep! will be everywhere.

ASIAN ARTS CELEBRATIONS

SUN
29th
OCT

ONE WORLD DAY

MULTI ASIAN ARTS perform
'Inspiration'
Sunday 29 October 12 noon - 5pm
Stoneyholme and Daneshouse
Community Centre, Burnley
Admission 50p Children FREE

Entertainment and activities galore are planned for this celebration to mark the end of 'One World Week'. Mid Pennine Arts contribution to this special event is provided by 'Inspiration', a unique collection of new music and poetry in Urdu/Punjabi composed by the popular singer, M Sarwar. The performance involves both traditional and western styles of music.

Come along for a great day out - something for everyone!

Presented in association with LCC Libraries Ethnic Service, C.R.S. and supported by NWAB.

SAT
25th
NOV

MEENA BAZAAR with DELKHON PRODUCTIONS

Saturday 25 November 2 - 5pm
Community Centre, Brierfield

£1.50, under 16's £1, under 5's Free

An event for women and children only - with live music from Delkhon Productions, children's activities, stalls and more.

In association with LCC Libraries Ethnic Services

SUN
3rd
DEC

DOSTANA

Sunday 3 December 2 - 5pm
Public Hall, Haslingden
Tickets £1.50
Children 10 and under £1

A family day out with music to appeal to all ages from the ever popular and entertaining Dostana.

Presented in association with LCC Libraries Ethnic Services

ACTIVITIES

2nd-
6th
OCT

WOOD SCULPTURE

Ann Toplis- Junior Schools Workshops
2 - 6 October

Ann is available to visit your school to work with 7 - 11 year olds to develop an appreciation of the qualities of wood. There will be opportunity to learn about the grain, the identity and properties of the material. **Cost per child £2.** For further details and to book places contact Julian on 01282 421986.

WED
18th
OCT

LIVE MUSIC NOW!

Rock concert by Delta Sly
Wednesday 18 October 10.30am
& 1.30pm Leisure Hall, Bacup FREE

Live Music Now! aims to take an experience of live music to audiences that don't usually get the chance. We are delighted to welcome 'Delta Sly' with a concert designed for Special Schools. A four piece band featuring vocals, guitar, trumpet, keyboards and percussion, their funky yet melodic sound and dynamic style is guaranteed to be popular with the children. Not to be missed. For further details and to reserve places for your school please contact Janet on 01282 421986.

Presented in association with Live Music Now! North West

9 OCT
AND
15 NOV

ARTS TEACHERS' FORUM meetings for the term ahead

Monday 9 October
Wednesday 15 November

All teachers are welcome to attend meetings which are held at the Mid Pennine Gallery in Burnley and begin at 4.00pm. Put the dates in your diary!
Supported by NWAB

THUR
7th
DEC

ADRIAN MITCHELL

Rhyddings High School,
Oswaldtwistle
Thursday 7 December 1.30pm

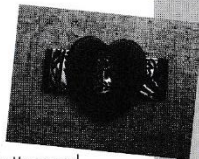
'The 13 Secrets of Poetry'
£1 per head
Rhyddings High School will host this poetry performance by Adrian Mitchell for 9 - 11 year olds. Will Junior Schools please contact Janet to book places.

SAT
4th
NOV

JEWELLERY WORKSHOP

with Jessica Briggs
Saturday 4 November
Mid Pennine Gallery

Join Jessica and recycle those enchanting buttons and buckles to create original pieces of jewellery. Give new life to those personal treasures you've been carefully preserving for years. Maximum number 12. **Cost £6**



activities

EXTENDED PROJECTS

For more information on the following projects please contact Jacky on 01282 421986

CAMERATA IN EDUCATION

Following the recent success of **Myths and Masques**, a music and dance project involving ten schools from the region, Manchester Camerata are proposing a new education project for this academic year. To tie in with the appointment of Sachio Fujioka as Principal Conductor for the orchestra the project will be based on the theme of Japan. An opportunity not to be missed!

LUDUS DANCE COMPANY IN PENDLE

6-10 November

Ludus are in residence in Pendle schools for a week in November. It's not too late to sign up for a Ludus workshop and see their new show **Wild Child**. See events for information on the public performance of **Wild Child**.
Subsidised by LCC Education Authority

PENDLE DANCE DEVELOPMENT PHASE II

is also being planned for early 1996. If you missed out last time now is the time to get in touch!
Supported by Leisure in Pendle and Lancashire County Dance Development

THEATRE MASK MAKING

January-March 1996

Fees for the ten week course £25 Waged, £18 Unwaged

Following the interest generated by the mask exhibition, **Seeing is Believing** and the project in schools, Jacky Riddell will be running a series of ten evening sessions looking at the design, creation and use of theatre masks. Experience not essential. Places limited so book your place now.

ELAAF REMINISCENCE PROJECT

The East Lancashire Asian Arts Forum are currently planning a project which will explore the arrival of the Asian communities to East Lancashire and their subsequent histories through video, photography, creative writing and other art forms.

Supported by LCC Arts Unit, Stocks Massey Charitable Trust, LCC Libraries Ethnic Services.

CARNIVAL!

Notting Hill, Trinidad and Tobago and now East Lancashire! If you're fascinated by the spectacular costumes of the world's famous carnivals this is your chance to learn more about the design and construction of these stunning creations.

In 1996 Mid Pennine Arts has an opportunity to develop a project with artist Paul McLaren. Paul has won prizes at Notting Hill and in world competitions. Maybe you saw his birds' heads in our recent Mask exhibition.

Supported by NWAB

BORED WITH BRASS BANDS?

14, 21, 28 November, 5 December

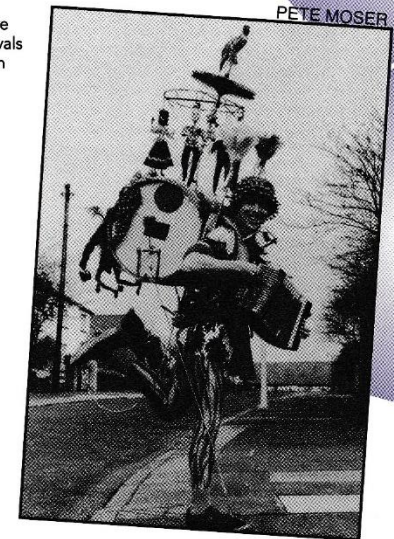
Burnley Youth Theatre, Queen's Park Road, Burnley
Fees for 4 sessions £5 Waged, Free Unwaged

Pete Moser is Lancashire's musician in residence and is allegedly Britain's fastest One-Man-Band! Pete has been leading the successful Music in Morecambe project and has worked on street carnival, songwriting, gamelan and even opera.

Join Pete in the creation of a street band for Burnley.

Accomplished musicians and non-musicians welcome.

IAW Lancashire Youth & Community Service, Burnley District & Burnley Mechanics Community Arts



PETE MOSER

WORLD BEAT

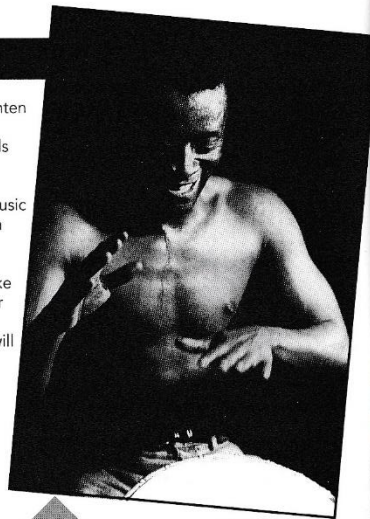
WORLD BEAT

The best Saturday night dance series returns to brighten the coming months with some of the greatest music sounds around. We bring to East Lancs the top Bands performing in two of your favourite venues.

Both venues offer licensed bar facilities ... and the music and dancing go on until late. Doors 8pm, Music 9pm

Bands for the Autumn Worldbeat circuit are not yet confirmed at the time of going to press. But if you like a dose of reggae, latin africabeat, cajun, dub, Irish or just the wildest dance music then let us keep you posted. . . . contact Kary on 01282 421986 and we will send you full details of all Worldbeat events.

Presented in Association with Rossendale and Hyndburn Borough Councils and supported by Lancashire County Council Arts Unit.



NANA TSIBOE

SAT
7th
OCT

Public Hall Haslingden

SAT
11th
NOV

Town Hall Accrington

SAT
2nd
DEC

Public Hall Haslingden

JAZZ AT THE BLUE NOTE

THE VERY BEST JAZZ SOUNDS LIVE AT TODMORDEN'S ATMOSPHERIC NIGHTSPOT.

THUR
2nd
NOV

CHRIS McNULTY

with the Trefor Owen Trio
Thursday 2 November
Blue Note Club, Todmorden.
Doors 8pm music 8.45pm
£4.50/£3 concessions

Australian born vocalist Chris combines a rare natural talent with professionalism and versatility. Using a mixture of power and control she invigorates both standards and her own compositions with her unique style. Now resident in New York she joins us from across the Atlantic and for tonight's gig teams up with guitarist, Trefor Owen; pianist Dave Saltrese a resident of Wales and regular performer throughout the North West, and long time session musician with Granada TV, Dave Lynane on Bass.



FAMILY SHOWS

SUN
3rd
SEP

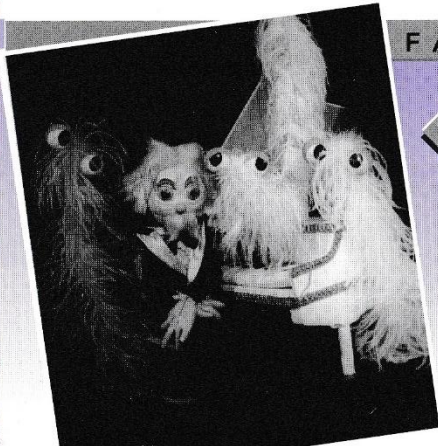
PRESTO PUPPET THEATRE

present 'Aladdin' and 'Puppet Cabaret'
Sunday 3 September 7pm
Vale Centre, Cornholme
All tickets £2.50 Family Ticket £10 (5 members)
Tinies Free

A host of the most colourful rod puppet creations gather together to present this light hearted pantomime. More than half life-size, the puppets are exquisitely costumed in styles based on Chinese designs. They weave their story amid beautiful scenery backed by Ragtime music featuring many of the classics of Scott Joplin.

A further treat is the 'Puppet Cabaret' a fast moving puppet variety show featuring glamorous trick marionettes. Together they promise a night for all the family to enjoy.

Presented in association with Cornholme Children's Arts Festival



Christmas Magic

CORDIAL COMPANY

present **A Christmas Hamper**
Wednesday 13 December 7.30pm
Regency Room, Towneley Hall, Burnley
£7/£5 concession.

Ticket price includes mince pie and mulled wine

Cordial Company will be delivering their highly entertaining seasonal programme, brimming over with all the relishes and spirits of the festive season, in the elegant setting of Towneley Hall's Regency Room.

Tempting you with a menu of delights ranging from Bach to Berlin with Handel, Betjeman and the Bard of Avon himself added to create an entertainment to match both the convivial atmosphere, the home made mince pies and the mulled wine. This promises an extra special evening. Last years Christmas music from Towneley was a sell out - so book early to avoid disappointment.



FRI
15th
DEC

NORTHERN CHAMBER ORCHESTRA

Friday 15 December 7.30pm
Town Hall, Todmorden
(See under MUSIC IN TODMORDEN)

RURAL ARTS IN EAST LANCASHIRE

Do you live in a village or smaller rural community? We are agents for a special Rural Arts Fund and will direct grants towards projects which:

- Involve a community or group working together
- Are creative and a new departure for your community
- Say something about your community or surroundings in the present or future rather than the past
- Have a majority of adult participants
- Have a lasting effect

Any group can apply!

Contact:
Melanie at Mid Pennine Arts on
01282 421986 for further details
or to discuss any ideas you may
have.

MEMBERSHIP MEMBERSHIP MEMBERSHIP MEMBERSHIP

Members of **MID PENNINE ARTS** save **£££'s**

on ticket and cash purchases from the gallery

FOR FURTHER INFORMATION

AND AN APPLICATION FORM CONTACT

MID PENNINE ARTS 01282 421986

Join
today for
as little
as **£4**

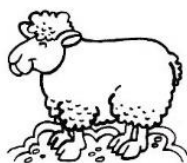
MEMBERSHIP MEMBERSHIP MEMBERSHIP MEMBERSHIP

Entertainment

Designed and Printed by PRINTOFF GRAPHIC ARTS LTD 01282 612222

programme

QUICK GLANCE



Live

WORLD BEAT

Mid-Pennine Arts gratefully acknowledges the financial assistance of the Borough Councils of Burnley, Hyndburn, Pendle and Rossendale, the Town Council of Todmorden, North West Arts Board, Yorkshire and Humberside Arts and Lancashire County Council Arts Unit.

The work of Mid Pennine Arts is supported by the Corporate Membership of Co-operative Retail Services Ltd. and by the Membership of 57 non-profit making local organisations. Assisted by Joe Houghton and Grace Dearborn Ltd. through Business in the Arts: North West.

The information in this brochure is correct at the time of going to press but MPA reserves the right to cancel or amend the programme due to unforeseen circumstances.



DATE	EVENT	VENUE
EXHIBITIONS		
Aug 19 - Sep 23	The New Ice Age	Mid Pennine Gallery
Sep 22 - Oct 20	Photography: Fay Godwin	Pendle Arts Gallery, Nelson
Sep 30 - Nov 4	Sheep	Mid Pennine Gallery
Nov 11 - Dec 23	Christmas Crafts	Mid Pennine Gallery
SEPTEMBER		
Sun 3	Presto Puppets	Vale Centre, Cornholme
Wed 27	John Mills - Guitar	Haworth Art Gallery,
Thurs 28	Nahid Siddiqui & Co	Rawtenstall College
OCTOBER		
Wed 4	Fay Godwin: Talk	Pendle Arts Gallery, Nelson
Sat 7	Worldbeat	Public Hall, Haslingden
Thurs 12	Camerata	Municipal Hall, Colne
Wed 18	Live Music Now!	Leisure Hall, Bacup
Wed 25	Theatre Sans Frontieres	Rawtenstall College
Fri 27	Albion Band	Town Hall, Accrington
Sun 29	One World Day	Stoneyholme & Daneshouse, Burnley
NOVEMBER		
Wed 1	Cars in Water	Civic Theatre, Nelson
Thurs 2	Chris McNulty with the Trefor Owen Trio	Blue Note Club, Todmorden
Mon 6 - Fri 10	Ludus in Pendle	Schools around Pendle
Wed 8	Lute & Guitar Recital	Haworth Art Gallery,
Fri 10	Todmorden Old Brass Band	Town Hall, Todmorden
Fri 10	Wild Child:Ludus Dance	Mansfield High School, Brierfield
Sat 11	Worldbeat	Town Hall, Accrington
Wed 22	Horse & Bamboo Theatre	Rawtenstall College
Thurs 23	Camerata	Municipal Hall, Colne
Sat 25	Meena Bazaar	Community Centre, Brierfield
Thurs 30	Excursion: Halle	Free Trade Hall, Manchester
DECEMBER		
Sat 2	Worldbeat	Public Hall, Haslingden
Sun 3	Dostana Group	Public Hall, Haslingden
Thurs 7	Adrian Mitchell	Silverman Hall, Nelson
Wed 13	Cordial Company	Towneley Hall, Burnley
Fri 15	N C O	Town Hall, Todmorden
JANUARY		
Fri 26	Excursion: La Boheme	Grand Theatre, Leeds