

JANUARY

FEBRUARY

MARCH

APRIL

MID
PENNINE

Arts



M. YOUNG - Four Women Artists

1996 Programme of Events

TICKETS IT'S SO EASY TO BOOK



IN PERSON: Call in at the Mid Pennine Gallery, Yorke Street, Burnley. Open Monday to Saturday 10am-5pm, Thursday open 1-5pm (or buy your tickets in your area - see under "Buy Your Tickets Locally")



BY PHONE: (01282) 421986 BY FAX: (01282) 429513 Ring us to buy tickets for our events and pay for them by credit card. All Access, Eurocard, Mastercard and Visa cards are accepted. **RESERVE TICKETS:** You can reserve tickets. Reservations will be held for three days.



BY POST: Write to us (NO STAMP REQUIRED) at FREEPOST BU 874, Burnley, Lancashire, BB11 1BR. Please make cheques payable to MPA and enclose an S.A.E.

CONCESSIONS: Concessionary rates are available to our MEMBERS, those in full time education, unemployed people, senior citizens, registered disabled people and members of The Met, Bury.

GROUP BOOKINGS: Buy ten, get the eleventh free. For larger parties contact Kary in the Marketing Department to discuss rates.

BUY YOUR TICKETS LOCALLY

MPA tickets are available from:

Accrington	The Information Shop, 3 Abbey Street Hyndburn Leisure, Town Hall
Bacup	Public Library, St. James Square First Steps (Business Consultants), Fiscal House, 27 St. James Street
Barnoldswick	Tourist Information, Fearnlea Avenue
Blackburn	Althams Travel Services, 12 Ainsworth Street
Bury	The Met, Derby Hall, Market Street
Clitheroe	Tourist Information Centre, Church Walk
Colne	Althams Travel Services, 13 Albert Road Pendle Leisure Services, Bank House, 61 Albert Road
Haslingden	Public Library, Deardengate
Hebden Bridge	Tourist Information Centre, 1 Bridgeway
Nelson	Althams Travel Services, 1 Scotland Road Tourist Information Centre, Town Hall Pendle Wavelengths, Leeds Road
Rawtenstall	Central Library, Queens Square
Todmorden	Tourist Information Centre, 41-46 Kay Street Althams Travel Services, 15 Halifax Road Bear Wholefoods, 29 Rochdale Road

BECOME A MEMBER

Becoming a member of MPA is easy and will save you £1.50 at most events and 5% discount on cash purchases from the Gallery.

Members also get

- The chance to borrow equipment (theatre equipment, children's play inflatables and more)
- Advance information - as a member you get the forthcoming season brochure mailed direct to your home
- Personal invitations to join MPA staff and other members at Gallery openings and other special events

All this for £9 (£12 joint) annual membership
Becoming a member is simple. Just call in and see us during office hours, ring or write to us for a membership form. Send it back with your payment and you become a member immediately.

FAMILY ENTERTAINMENT

FRI
16th
FEB

CLYDEBUILT PUPPET THEATRE

present 'GIANTS MAGIC AND MYSTERY'
Vale Centre, Cornholme
Friday 16 February 7pm
Tickets £2.50/£1 concessions

'Giants, Magic and Mystery' captures

all the vitality and magic of Celtic storytelling in this

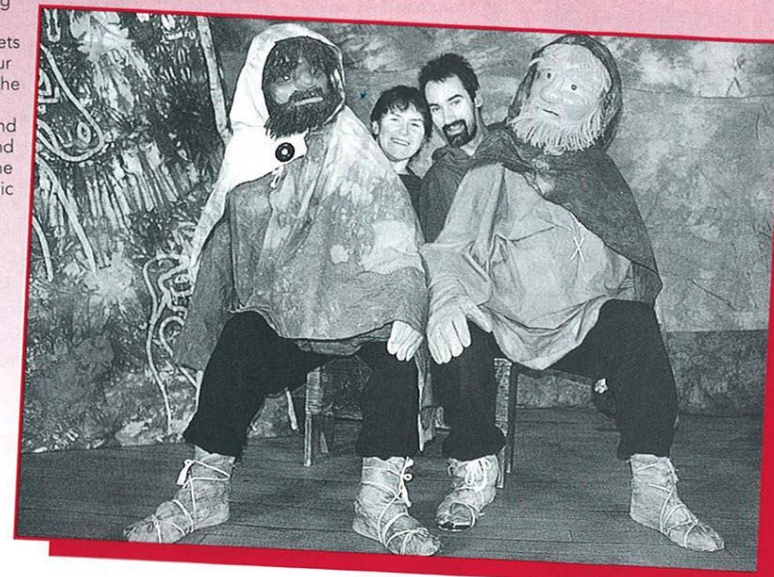
creative show combining astonishing six foot puppets with rod puppets and shadow theatre. Our adventures begin with the famous Scottish tale of elfin magic, 'Tam Lin' and cross the water to Ireland to tell the tall tale of 'The Three Giants'. This comic story has enchanted audiences throughout Scotland.

We are delighted to bring these wonderful puppets to Lancashire.

THUR
15th
FEB

MATINEE PERFORMANCES

Haslingden Public Hall
Thursday 15 February
10.15am and 1.15pm
(See under Schools Performances)



CLYDEBUILT PUPPET THEATRE

HOW TO FIND US

The Mid Pennine Gallery is a part of the Mechanics building in the town centre. Approach from Yorke Street or via the Mechanics foyer.

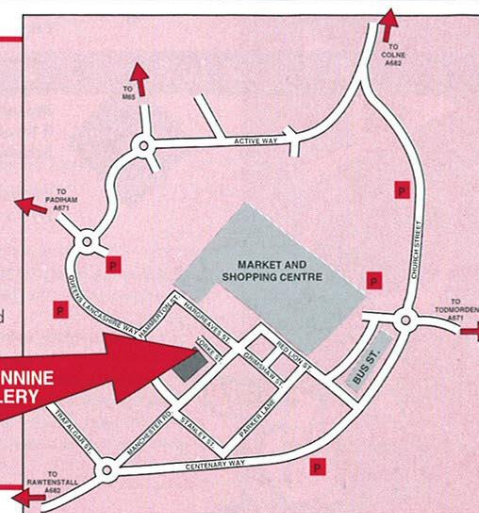
BY TRAIN: Burnley is served by three stations with regular services from Leeds and Preston. Enquiries 'phone 01282 425421.

BY CAR: See map for car parking, all car parks are just a few minutes walk from the Gallery.

BY BUS: Regular services stop outside the Mechanics from the local area/Manchester/Preston. Enquiries 'phone 01282 423125

EDUCATION: Thursday mornings between 10am - 1pm are reserved exclusively for education purposes. Your class or group can work and enjoy a lesson without any interruptions. To book your time 'phone Julian on 01282 421986.

EASY ACCESS: The Gallery has full ramped access at the rear of the building and adjusted toilet facilities. Guide dogs are welcome.



CAMERATA



CAMERATA IN COLNE

Municipal Hall, Colne

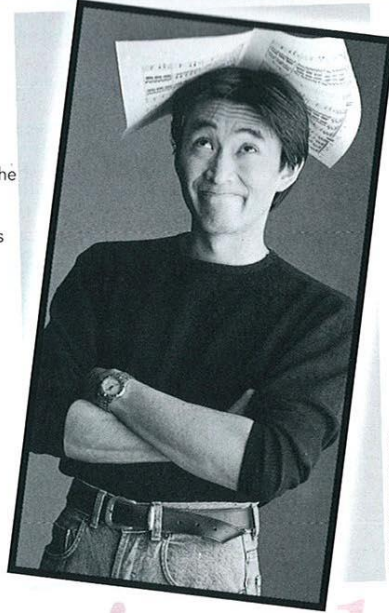
The popular Manchester Camerata series in Colne continues during Spring with two outstanding concerts.

Sachio Fujioka, the new Principal Conductor, delighted the audience when he made his first appearance in Colne in the Autumn. We look forward to his next appearance and we welcome our illustrious international guest pianist, **Lev Vinocour** from Russia.

The final concert in the season heralds the return of the ever popular **Camerata Ensemble led by Richard Howarth**.

Don't delay, book your tickets now for the forthcoming Spring programme.

All concerts start at 7.30pm.
Pre-concert talk 6.45pm



SACHIO FUJIOKA

Classical

THUR
15th
FEB

Thursday 15 February
Arensky Variations on a Theme of Tchaikovsky
Shostakovich Piano Concerto No 1
Tchaikovsky Serenade for Strings

Conductor Sachio Fujioka
Lev Vinocour Piano

THUR
14th
MAR

Thursday 14 March
Mozart Quintet K516
R Strauss Sextet from Capriccio
Schubert Quintet

Camerata Ensemble
Director Richard Howarth

Balcony tickets £8/£6.50. Stalls tickets £6.50/£5
Members of Mid Pennine Arts can claim concessionary ticket prices.
Advanced booking is advised.

Presented in association with Pendle Borough Council, Manchester Camerata and the Musicians' Union.
The February concert is sponsored by Silentnight and publicity for the series by Fort Vale Engineering.



MUSIC IN TODMORDEN

FRI
12th
APR

NORTHERN CHAMBER ORCHESTRA

Friday 12 April 7.30pm
Tickets: £7/£5.50 concessions
Students £4

The NCO return to Todmorden with a delightful programme for the Spring.

Rossini String Sonata No. 3
Haydn Violin Concerto in C

Plus Serenades by Dag Wiren and Suk

Nicholas Ward Director/Violin

Presented in association with NCO and Yorkshire and Humberside Arts

Classical



EXCURSIONS

SUN
23rd
JUNE

THE 1996 YORK CYCLE OF MYSTERY PLAYS

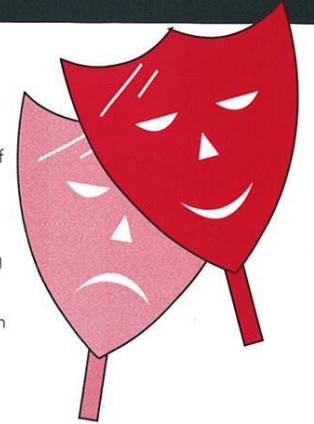
York Theatre Royal
Sunday 23 June

Once every 4 years in York something extraordinary happens. One of the greatest biblical stories of all time is told in a moving and dramatic unfolding of the dawn of Christianity. This is an event that will move you to your soul and a theatrical experience rarely seen. The Mystery Plays will create an emotional journey from the Garden of Eden to the Harrowing of Hell. Our excursion takes in this amazing performance and allows you time to explore York city.

Tickets £21 and £19 concessions (Upper Front Circle seats)
Pick up points for the coach; Rawtenstall, Accrington, Burnley, Nelson and Colne.

Our excursions are very popular so please book early to avoid disappointment.

Closing date for registration is Monday 15 April.



DATES FOR YOUR DIARY SUMMER 1996

THUR
6th
JUNE

ILLYRIA

present SHAKESPEARE'S 'MUCH ADO ABOUT NOTHING'
The Rose Garden, Haworth Art Gallery, Accrington
Thursday June 6. 7.30pm
Tickets £6/£4 concessions

Mid Pennine Arts are delighted to bring the magic of open-air theatre to Accrington this Summer. Illyria is Britain's leading, professional, open-air touring Shakespeare company. They are renowned for presenting classical theatre of the highest quality. This performance of 'Much ADO About Nothing' will be staged in the glorious setting of the Rose Garden at the Haworth Art Gallery, Accrington. A chance to watch quality theatre, picnic with friends and just relax and enjoy the garden. Early booking will avoid disappointment.



THUR
1st
FEB

The Studio, Accrington
and Rossendale
College, Rawtenstall

'Tryst' - four solo pieces by

**NEW BREED
THEATRE COMPANY**

Thursday 1 February 7.30pm
Tickets: £4.50/£3 concessions

The endlessly inventive New Breed bring together a selection of the most outstanding directors, writers and musicians to work with four of the most sought after disabled performers in the country. The result is four contrasting solo performances, vastly different in theme and style and drawing on material that ranges from personal experience to bizarre fantasies.

Still Waters Deep

Using veils, webs, mirrors and original music.

St Valentine's Eve

A Mephistophelean story of greed, murder and money.

Stalking HiStories

An intensely powerful and atmospheric fantasy.

Stick Around

One tree, eight sticks, one human and some magic.

This series is presented in association with Accrington and Rossendale College and supported by NWAB Touring.



THUR
8th
FEB

IMLATA DANCE COMPANY

perform **'JYRO-SCAPE'**

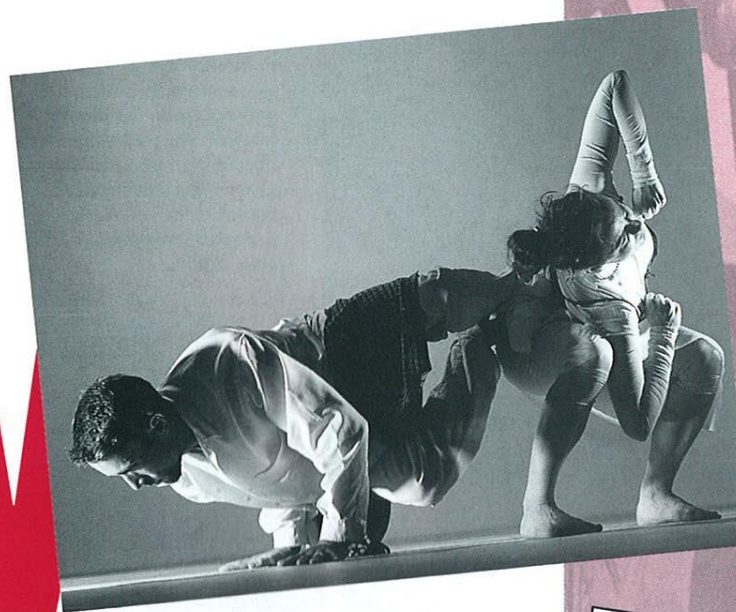
Thursday 8 February 7.30pm

Tickets £4.50/£3 concessions

It's young, fun and funky....

Focusing on young people and youth culture, Jyro-Scape combines exhilarating movement with a vibrant and hypnotic electronic score by DJ and recording artist Fabio Paras. From parties, night clubs and the techno environment of rave culture, to images of funeral ceremonies and religious festivals, this is one evening not to be missed!

This multi-cultural dance company perform a powerful, fast moving and inspired fusion of South Asian dance theatre, martial arts and western contemporary dance.



THUR
2nd
MAY

**ABASINDI DANCERS
AND DRUMMERS**

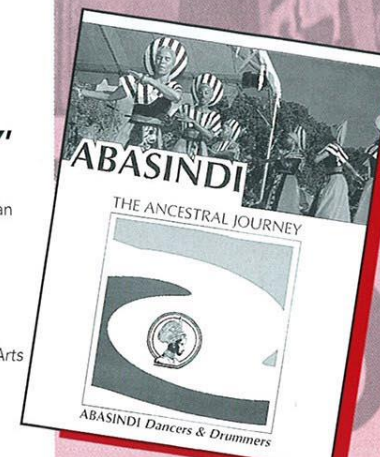
perform **'ANCESTRAL JOURNEY'**

Thursday 2 May 7.30pm

Tickets: £4.50/£3 concessions

This all women group take us on an 'Ancestral Journey' across the ocean to the Caribbean where the African peoples lived in captivity as slaves. Drumming and dancing continued to be a part of their lives even after they were sold into the harsh and cruel life of slavery. Featuring songs and dances that originate from East, South and West Africa, Abasindi celebrate the survival and vitality of the African peoples.

This event is part of Rossfest and Accrington and Rossendale College Arts and Media Festival



ADMISSION
IS FREE

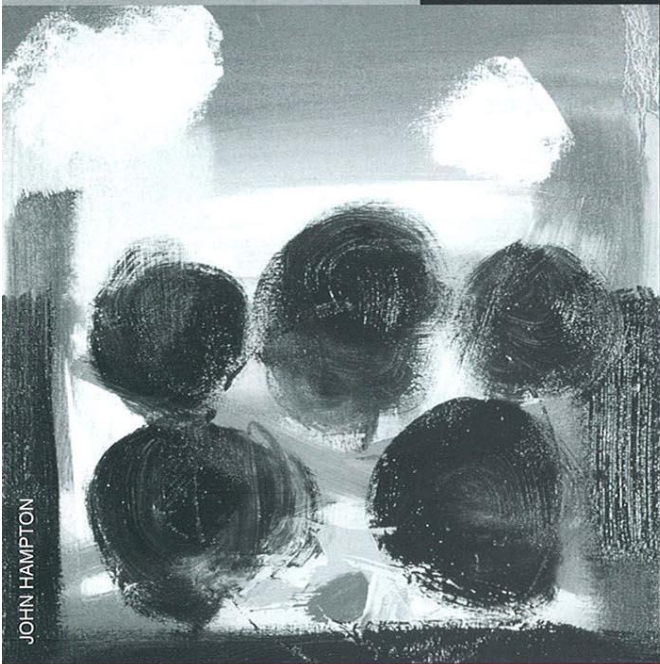
MID PENNINE GALLERY

ADMISSION
IS FREE

YORKE STREET, OFF MANCHESTER ROAD, BURNLEY.
OPEN MONDAY TO SATURDAY 10am - 5pm,
THURSDAY 1pm - 5pm.

24 FEBRUARY TO 30 MARCH

JANUARY 13 TO 17 FEBRUARY

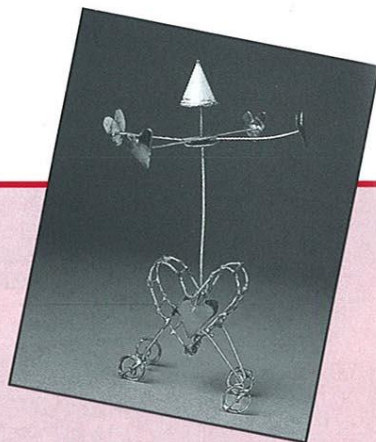


JOHN HAMPTON

INTO ABSTRACTION

JOHN HAMPTON

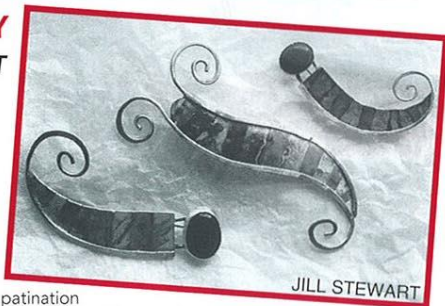
John's paintings are highly coloured, vibrant and express a vitality that will do much to alleviate Winter's chill. Primarily concerned with human presence and interaction in relation to interior and exterior space, the works are very much about order and chaos, the emotional and rational. His concern is not with describing but symbolising and expressing these sensations through marks, colour and shape. A perfect introduction into abstraction.



JEWELLERY

JILL STEWART

Jill's pieces are organic in shape, rather like evolving creatures or plant tendrils. They are worked in mixed metal, often incorporating unpredictable effects- the red of heated copper, blue patination - the work is colourful, delicate and has a rather ancient quality.



JILL STEWART

JULIE SELLARS

A delightful spontaneity infuses these pieces. Working in a variety of metals, Julie allows the forms to evolve rather than working from drawings. Architecture, sculpture and nature provide a rich source that finds expression in her work.

VALENTINE

SARAH JANE BROWN

An unusual, inexpensive and romantic gift for Valentines Day is on offer in this month's showcase. Sarah Jane produces automata with the theme of 'love' forever present. Wire shapes spiralling, an abundance of red tin hearts suggesting, in a lighthearted manner, the joy of romance. From the smallest gift of a card to a one-off piece of automata - something to capture everyone's heart....

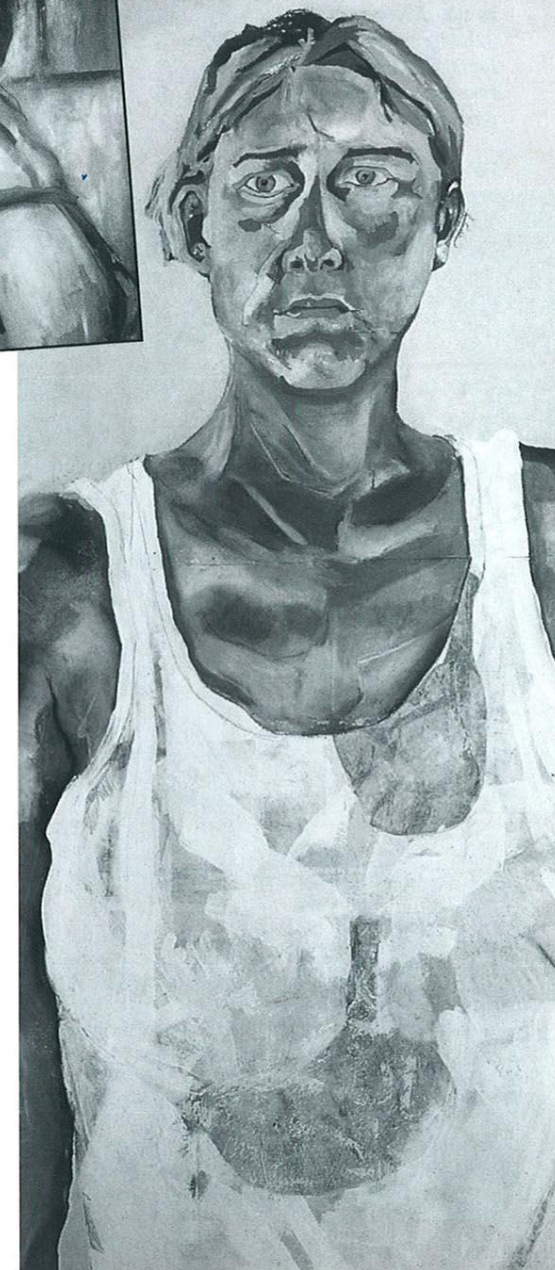
FOUR WOMEN ARTISTS

Four Women Artists - Sarah Robinson, Melanie Young, Ghislaine Howard, Anita Kaushik. From the bizarre to the commonplace, images of startling realism and of surreal humour - the lives of women by women.

GHISLAINE HOWARD



SARAH ROBINSON



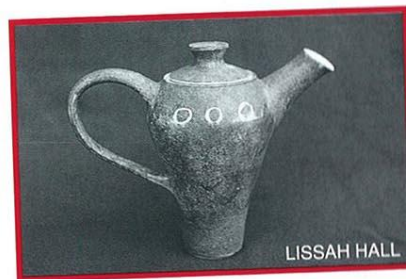
This exhibition promises to be thought provoking, surprising and intriguing as these four female artists explore the identity of women. If you enjoy the exhibition, you can find a further selection of work at the Haworth Art Gallery in Accrington (see over).

CRAFTS

LISSAH HALL

'I gain so much satisfaction from the direct contact with the clay and feel that each pot is very much a part of me.'

Lissah enjoys working the clay to its limits and produces large decorative sculptural ceramics and domestic ware. Inspired by her working environment amidst the Pennine hills, she works from drawings, extracting the decorative shapes and elements that complement the form of the pot.



LISSAH HALL

JEWELLERY

CATHERINE E RUNDLE

Catherine's Bubble Range is inspired by natural forms. Made of hand finished sterling silver. The emphasis of patination using 22ct gold plate and oxidation adds variation.

CLAIRE DENHAM-SMITH

Claire's work uses bold and simple forms influenced by German design. The use of movement is important. Quality is essential, cleanliness of lines and simplicity of form go to make work of supreme craftsmanship.

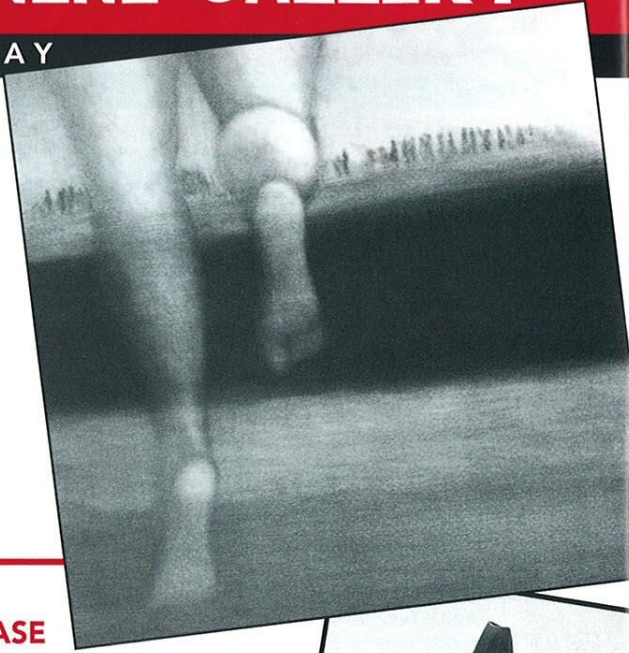
MID PENNINE GALLERY

20 APRIL TO 25 MAY

GROUPE SPIRALE

We celebrate Burnley's new twinning agreement by bringing to the Gallery a first ever exhibition from Vitry-Sur-Seine, Paris. Groupe Spirale are a very talented collection of five painters.

Founded in '91 they present an annual show at Vitry's Municipal Gallery, and also exhibit around Paris and beyond. Members of the group regularly feature in national 'salon' shows.



PAUL MUCHAN



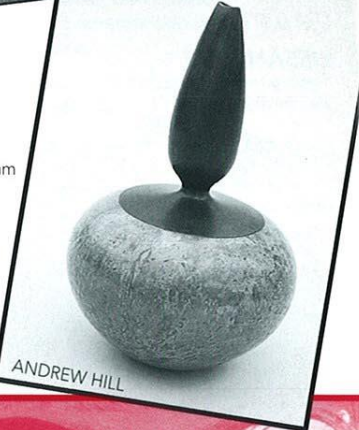
CRAFT SHOWCASE

Local Ceramicists

ANDREW HILL, LETITIA GUPPY, KEITH & BERYL DAWDRY, PAUL MUCHAN, JOANNE BANCROFT

We are fortunate to have in our local area a rich seam of outstanding ceramicists creating work that is exciting, collectable and affordable. The character and individuality of a piece is surely part of the pleasure for the onlooker.

Original works that offer a unique opportunity to view such a diverse range of style and technique....the ideal time to start your own collection!



ANDREW HILL



JEWELLERY

JANICE GILMORE

Vibrant threads and fine beads together create an exciting collection of embroidered jewellery and accessories capturing an essence of wealth and timeless appeal, inspired by the decorative arts of ancient cultures.

LOUISE CHISLETT

Hand crafted from sterling silver. One of the strong influences is the relationship of different shapes to each other. A common link in the pieces is the use of spirals and texture, giving the work a natural, organic feel.

OUT AND ABOUT FOUR WOMEN ARTISTS

Haworth Art Gallery, Accrington
Monday 4th - Sunday 31st March
Throughout March the Haworth plays host to a collection of work by four women artists. Intriguing, powerful images of women by women that will extend your understanding. Its well worth a visit. Work from the same four artists is also on show at the Mid Pennine Gallery (see previous page). This double exhibition is presented to celebrate **International Women's Week**.

POETRY IN ACCRINGTON

WED
6th
MAR

SAY SO POETS - 'I AM HER LIFE'

Haworth Art Gallery, Accrington
Wednesday 6 March 7.30pm
£3/£2 concessions

Two women poets with a special performance for International Women's Week. Carmen Walton and Mandy Precious are unusually gifted and talented poets. The quirkiness of life attracts them and is evident in their often hilarious poetry. They have been described as 'Fry and Laurie meet Victoria Wood'. This is definitely a date for your diary!

womens week

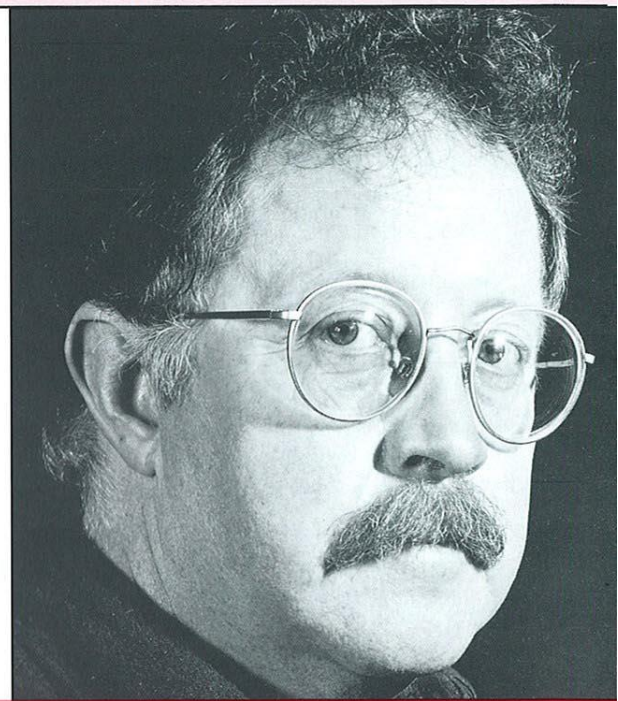
FRI
1st
MAR

MIKE HARDING - POEMS AND STORIES, 'DADDY EDGAR'S POOLS'

Accrington Town Hall
Friday 1 March 8pm
Tickets: £6/£5 concessions

The ever popular Mike Harding is a stand-up comic who has only recently become known as a published poet and short story writer. With this collection of poems and stories, he paints a vivid picture of his Manchester childhood, his love of the countryside and his frequent travels. A very different Mike Harding emerges in this new-found role, but he displays the same irreverence towards authority and serious insight that marks his comedy.

Presented in Association with
Hyndburn Borough Council



MEMBERSHIP MEMBERSHIP MEMBERSHIP MEMBERSHIP MEMBERSHIP

Members of **MID PENNINE ARTS** save **£££'s**

on ticket and cash purchases from the gallery

FOR FURTHER INFORMATION

AND AN APPLICATION FORM CONTACT

MID PENNINE ARTS 01282 421986

Join
today for
as little
as **£4**

MEMBERSHIP MEMBERSHIP MEMBERSHIP MEMBERSHIP MEMBERSHIP

EXTENDED PROJECTS

If you are planning a participatory project and need some advice or assistance maybe we can help. For more information about what we can offer or details about any of the following projects please contact Jacky on 01282 421986.

15 JAN -
18 MAR

THEATRE MASK MAKING

Mondays 6.30-9.00pm
15 January- 18 March
Waged £25 Unwaged £18

Fed-up with long, dark nights? Do you long to get out of the house and do something different? It's not too late to join this ten session evening class to learn the techniques for making a quality theatre mask. Come along and have a go and learn a new skill..... no experience necessary.

JAN -
MARCH

PENDLE DANCE DEVELOPMENT PHASE II

Phase I was a tremendous success and we were equally delighted with the very positive response during the recent week's residency with Ludus Dance Company. Following this success, Phase II of this development project will see activities in Earby, Brierfield and Colne culminating in a sharing of work at the end of March.

JAN
AND
MAR

ASIAN ARTS IN ROSSENDALE

In partnership with the Youth & Community Service young people of Asian heritage in Rossendale are being invited to participate in two arts projects in March. If you are interested in finding out more contact either Kaleem Anwar on 01706 225180 or Jacky on 01282 421986.

JAN
TO
APR

GENERATIONS

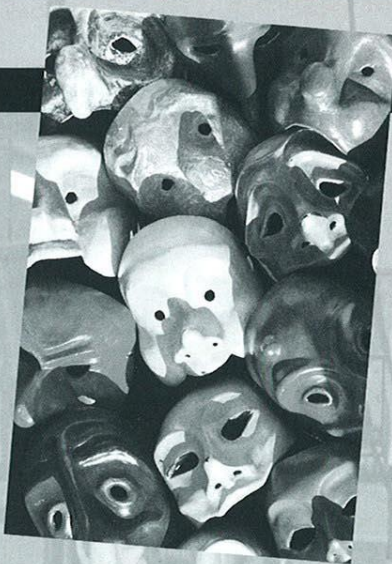
The East Lancashire Asian Arts Forum (ELAAF) is developing a range of projects which explore and document the life of the Asian community in East Lancashire. A video documentary in Pendle and photography in Burnley are already in the pipeline. We'd like to hear from other groups with their ideas. Contact Jacky at Mid Pennine Arts to discuss your proposals further (01282 421986).

MARCH

THE VASE

Haworth Art Gallery, Accrington
March 1996

As part of the Haworth's 75th anniversary there will be three artists' residencies during 1996 on the broad theme of the vase. The residencies include each artist working with local groups to produce work for the culminating exhibition in September. The residency in March is looking for women's groups and groups from education to participate in workshops once a week during the month.



ACTIVITIES FOR SCHOOLS

FEB

ANN TOPLIS - WORKSHOPS FOR JUNIOR SCHOOLS

February

THUR
15th
FEB

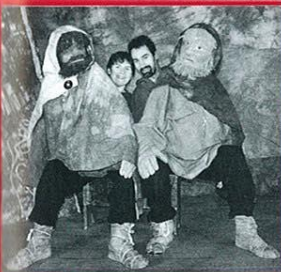
CLYDEBUILT PUPPET THEATRE

present 'GIANTS, MAGIC
AND MYSTERY'

Haslingden Public Hall

Thursday 15 February 10.15am and 1.15pm

'Giants, Magic and Mystery' captures all the vitality and magic of Celtic storytelling in this creative show combining astonishing six foot puppets with rod puppets and shadow theatre. Our adventures begin with the famous Scottish tale of elfin magic, Tam Lin and cross the water to Ireland to tell the tall tale of The Three Giants. This comic story has enchanted audiences throughout Scotland and we are delighted to bring these wonderful puppets to Lancashire.



All tickets £1 (accompanying Teachers Free)
For further information and to reserve places please contact Janet on 01282 421986

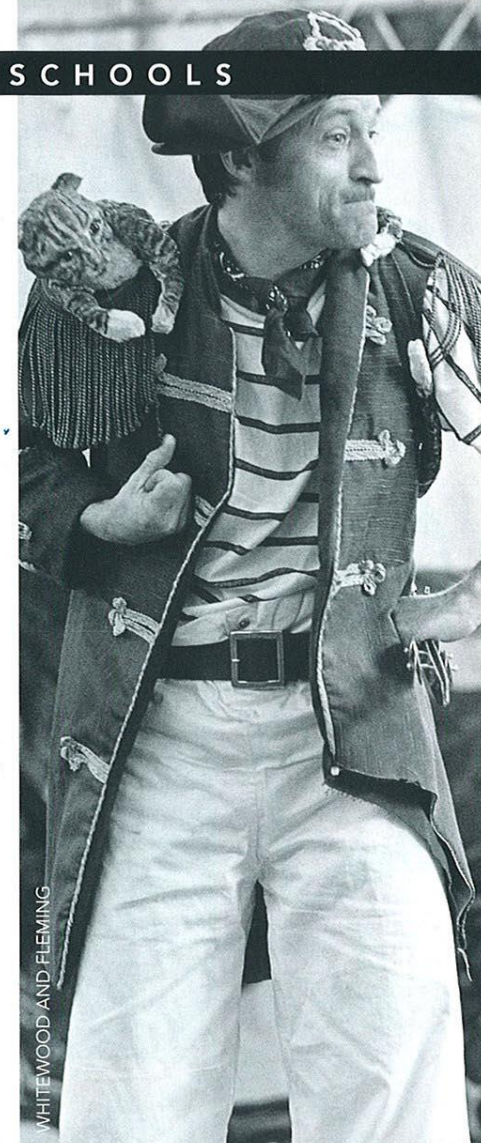
18th
-
22nd
MAR

Todmorden Schools Tour
Monday 18 - Friday 22 March

WHITEWOOD AND FLEMING present 'THE BOATBUILDER'

The annual Todmorden Schools Tour has become a feature of the calendar and a highlight of the Spring season. This year is no exception and the highly entertaining combination of theatre and music in this performance should captivate the children. A tale of an old style pirate in a modern world, Captain Keelhaul and his adventures will live in the memory long after the performance ends.

WHITEWOOD AND FLEMING



RURAL ARTS IN EAST LANCASHIRE

Do you live in a village or smaller rural community? We are agents for a special Rural Arts Fund and can offer grants towards projects which:

- Involve a community or group working together
- Are creative and a new departure for your community
- Say something about your community or surroundings in the present or future rather than the past
- Have a majority of adult participants
- Have a lasting effect

Any group can apply!

Contact:
MELANIE AT MID PENNINE ARTS
ON 01282 421986 FOR FURTHER
DETAILS OR TO DISCUSS ANY
IDEAS YOU MAY HAVE.

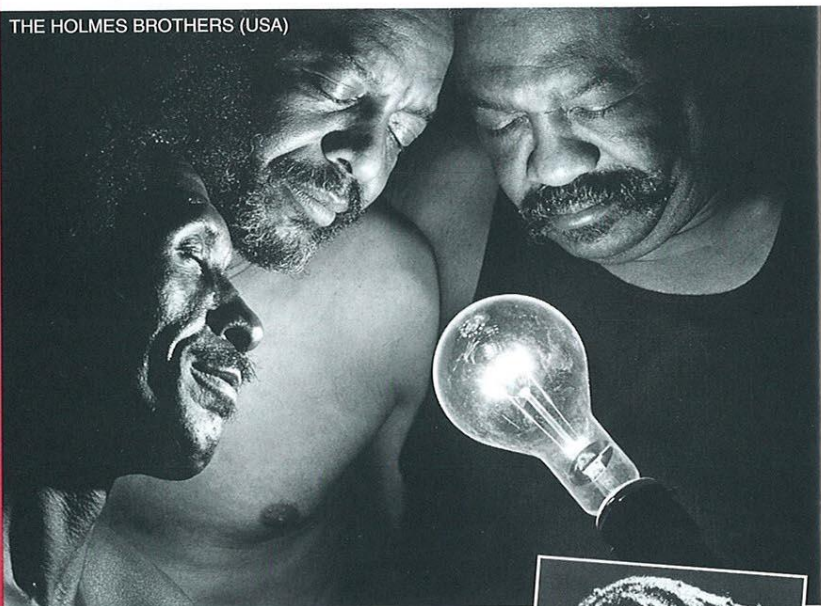
£50-£500

FRI
8th
MAR

THE HOLMES BROTHERS (USA)

Friday March 8
Haslingden Public Hall, Door open 8pm
Tickets £4.50/£3 concessions
"One of the all-time great soul bands" . . . The Washington Post
"This impossibly great band" . . . The New Yorker
After twenty five years in the business, The Holmes Brothers released their debut album to much critical acclaim in 1989. 'With a hearty blues gospel ensemble sound and three distinctive lead styles, they bring renewed urgency and energy to classic blues and R & B' . . . Rolling Stone. The band has since toured worldwide headlining W.O.M.A.D. Festivals and pursuing their new found recording career. They have the distinction of being the first American artists to record an album for Peter Gabriel's Real World label. The Holmes Brothers have it all, blues, soul, gospel, R & B and country . . . You must see this show.

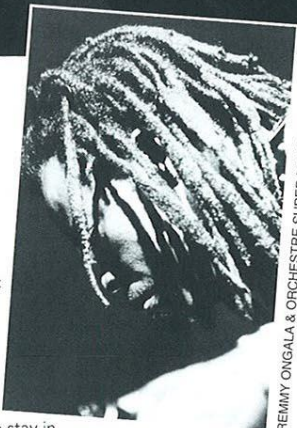
THE HOLMES BROTHERS (USA)



SAT
4th
MAY

REMMY ONGALA AND ORCHESTRE SUPER MATIMILA (TANZANIA)

Saturday 4 May
Haslingden Public Hall
Door open 8pm
Tickets £4.50/£3 concessions
Raw, powerful, exciting - this is dance music with serious ideas. The Orchestre are regular crowd pleasers at W.O.M.A.D.'s annual festivals, and Remmy Ongala's rich, poignant, worldly wise vocals add soul and depth to an uplifting live set. Incessant, hypnotic guitars, sultry bass lines and supple percussion will make it impossible to stay in your seat.



REMMY ONGALA & ORCHESTRE SUPER MATIMILA

Watch out for Worldbeat dates in Accrington!

THE VERY BEST JAZZ SOUNDS LIVE AT TODMORDEN'S ATMOSPHERIC NIGHTSPOT.

THUR
25th
JAN

JOHN HELLIWELL QUINTET

Blue Note Club, Todmorden
Doors 8pm, Music at 8.45pm
Thursday 25 January
Tickets: £5/£4 concessions

Former Supertramp saxophonist John makes a welcome return to the Blue Note after an absence of several years. We are delighted to welcome him back with an impressive line-up of ..Hammond Organ,..Guitar,..Double Bass and...Drums. Don't miss one of the great sax players performing on his home territory. Be sure to book early!

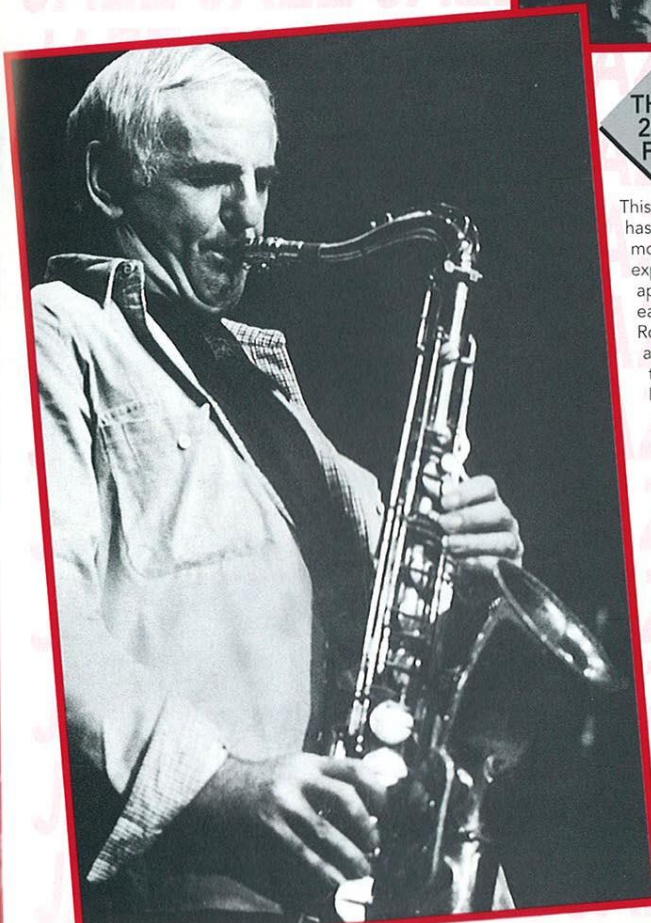


THUR
29th
FEB

RONNIE SCOTT QUARTET

Blue Note Club, Todmorden
Thursday 29 February
Tickets £9/£7 concessions

This doyen of the British modern jazz world has been at the top of his profession for more than forty years. A masterly exponent of the tenor sax, his laid back approach (and inevitable jokes) have earned him a host of loyal admirers. Ronnie has played with all of the greats and for over thirty years he has owned the most famous jazz club in the country. Book early to avoid disappointment.



Entertainment

programme

QUICK GLANCE

DATE EVENT VENUE

EXHIBITIONS

Jan 13 - Feb 17	Into Abstraction	Mid Pennine Gallery
Feb 24 - March 30	Four Women	Mid Pennine Gallery
March 4 - 31	Four Women	Haworth Art Gallery
April 20 - May 25	Group Spirale	Mid Pennine Gallery

JANUARY

Thurs 25	John Helliwell Quintet	Blue Note, Todmorden
----------	------------------------	----------------------

FEBRUARY

Thurs 1	New Breed Theatre Co	Rawtenstall College
Thurs 8	Imlata Dance Co	Rawtenstall College
Thurs 15	Camerata/Vinocour	Municipal Hall, Colne
Thurs 15	Clydebuilt Puppets	Public Hall, Haslingden
Fri 16	Clydebuilt Puppets	Vale Centre, Cornholme
Thurs 29	Ronnie Scott Quartet	Blue Note, Todmorden

MARCH

Fri 1	Mike Harding-Poems & Stories	Town Hall, Accrington
Wed 6	Say So Poets	Haworth Art Gallery
Fri 8	Worldbeat: Holmes Bros	Public Hall, Haslingden
Thurs 14	Camerata	Municipal Hall, Colne
Mon 18- Fri 22	Todmorden Schools Tour	Todmorden

APRIL

Fri 12	Northern Chamber Orchestra	Town Hall, Todmorden
--------	----------------------------	----------------------

MAY

Thurs 2	Abasindi Drummers & Dancers	Rawtenstall College
Sat 4	Rosifest Worldbeat	Public Hall, Haslingden

Mid-Pennine Arts gratefully acknowledges the financial assistance of the Borough Councils of Burnley, Hyndburn, Pendle and Rossendale, the Town Council of Todmorden, North West Arts Board, Yorkshire and Humberside Arts and Lancashire County Council Arts Unit.

The work of Mid Pennine Arts is supported by the Corporate Membership of Co-operative Retail Services Ltd. and by the Membership of 57 non-profit making local organisations. Assisted by Joe Houghton and Grace Dearborn Ltd. through Business in the Arts: North West.

The information in this brochure is correct at the time of going to press but MPA reserves the right to cancel or amend the programme due to unforeseen circumstances.

