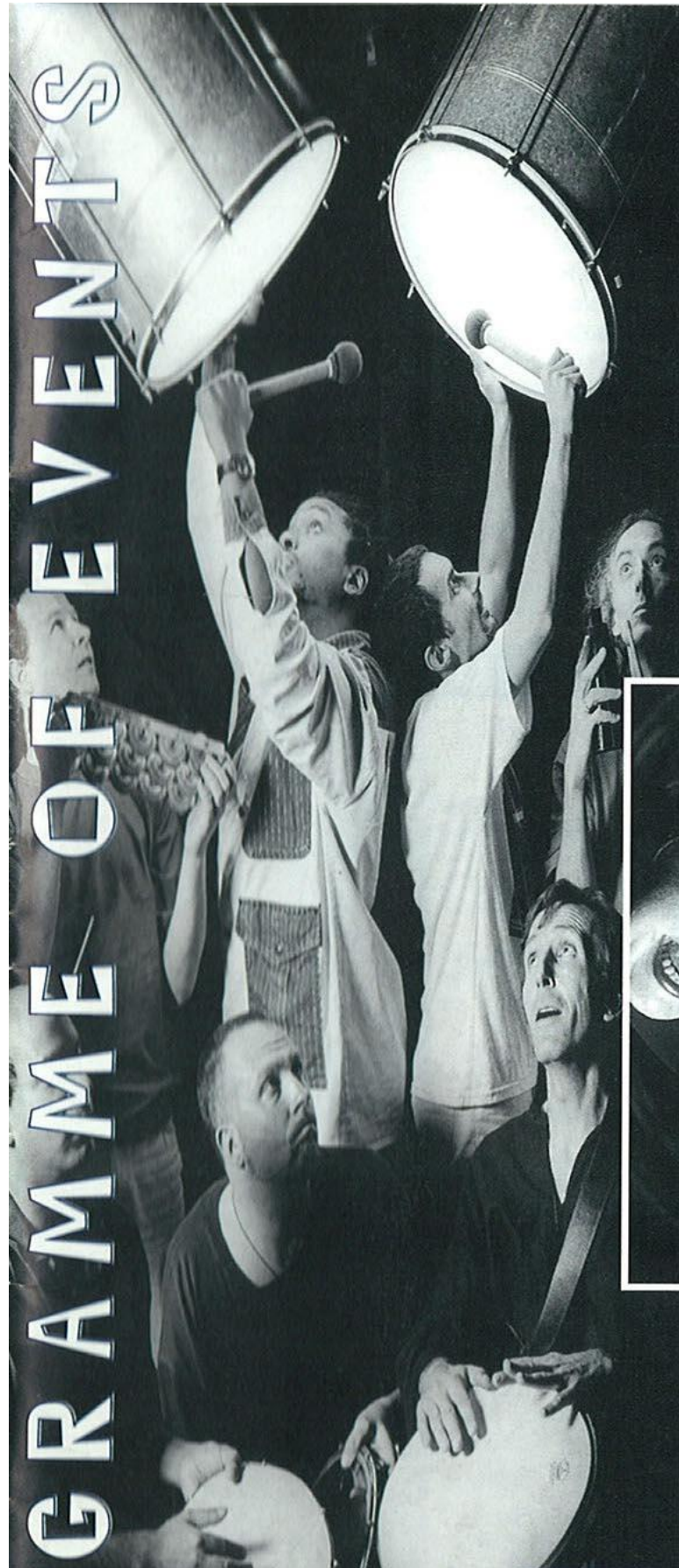


PROGRAMME OF EVENTS



INNER SENSE

MID PENNINE
Ants



FOOTWORKS



CUSTARD FACTORY THEATRE

NEIL BROWNSWORD



JANUARY

FEBRUARY

MARCH

APRIL

97

TICKETS IT'S SO EASY TO BOOK



IN PERSON: Call in at the Mid Pennine Gallery, Yorke Street, Burnley. Open Monday to Saturday 10am-5pm, Tuesday open 10am-1pm (or buy your tickets in your area - see under 'Buy Your Tickets Locally')



BY PHONE: (01282) 421986 BY FAX: (01282) 429513 Ring us to buy tickets for our events and pay for them by credit card. All Access, Eurocard, Mastercard and Visa cards are accepted. **RESERVE TICKETS:** You can reserve tickets. Reservations will be held for three days.



BY POST: Write to us (NO STAMP REQUIRED) at FREEPOST BU 874, Burnley, Lancashire, BB11 1BR. Please make cheques payable to MPA and enclose an S.A.E.

CONCESSIONS: Concessionary rates are available to our MEMBERS, those in full time education, unemployed people, senior citizens, registered disabled people and members of The Met, Bury.

GROUP BOOKINGS: Buy ten, get the eleventh free. For larger parties contact Kary in the Marketing Department to discuss rates.

BUY YOUR TICKETS LOCALLY

MPA tickets are available from:

Accrington	The Information Shop, 3 Abbey Street Hyndburn Leisure, Town Hall Public Library, St. James Square
Bacup	First Steps (Business Consultants), Fiscal House, 27 St. James Street
Barnoldswick	Tourist Information, Fearnlea Avenue
Bury	The Met, Derby Hall, Market Street
Clitheroe	Tourist Information Centre, Church Walk
Colne	Pendle Leisure Services, Bank House, 61 Albert Road
Haslingden	Public Library, Deardengate
Hebden Bridge	Tourist Information Centre, 1 Bridgegate
Nelson	Tourist Information Centre, Town Hall Pendle Wavelengths, Leeds Road
Rawtenstall	Central Library, Queens Square
Todmorden	Tourist Information Centre, 41-46 Kay Street Bear Wholefoods, 29 Rochdale Road

BECOME A MEMBER

Becoming a member of MPA is easy and will **SAVE** you **£1.50** at most events and **5% discount** on cash purchases from the Gallery.

Members also get

- The chance to borrow equipment (theatre equipment, children's play inflatables and more)
- Advance information - as a member you get the forthcoming season brochure mailed direct to your home
- Personal invitations to join MPA staff and other members at Gallery openings and other special events

All this for £9 (£12 joint) annual membership

Becoming a member is simple. Just call in and see us during office hours, ring or write to us for a membership form. Send it back with your payment and you become a member immediately.

CUSTARD FACTORY THEATRE - MACBETH

CAMERATA IN COLNE



As we enter the new year the Camerata series continues to brighten the winter months. Laurence Perkins (bassoon) makes a welcome return in the February concert, when the programme includes Mozart's Bassoon Concerto. The final concert of the series features recorder virtuoso, Michala Petri, who has proved to be a special favourite with Mid Pennine audiences.

We've saved the best 'till last!

The pre-concert talks will be given by Jonathan Price, these are free to ticket holders and start at 6.45pm.

THUR
13th
FEB

Thursday 13 February
Municipal Hall, Colne
7.30pm. Pre concert talk 6.45pm
Simon Wright - CONDUCTOR
Laurence Perkins - BASSOON

Grieg	Holberg Suite
Mozart	Bassoon Concerto
Barber	Adagio
Haydn	Symphony No 49 La Passione

THUR
27th
MAR

Thursday 27 March
Municipal Hall, Colne
7.30pm. Pre concert talk 6.45pm
Nicholas Kraemer - CONDUCTOR
Michala Petri - RECORDER

Handel	Water Music Suite No 1
Telemann	Concerto in E minor for Flute and Recorder
Telemann	Selection from The Water Music Suite
Vivaldi	Concerto in D major RV428 Il Gardellino
Bach	Brandenburg Concerto No 4 in G BWV 1049

EXCURSIONS

THUR
30th
JAN

OPERA NORTH : MADAM BUTTERFLY

Grand Theatre, Leeds

Thursday 30 January. 7.15pm

Opera North's first new production of Puccini's *Madama Butterfly* since 1986. Young Lithuanian director Dalia Ibelaitaitė takes an exciting international cast to rehearse Puccini's deeply affecting opera as American tenor Mark Nicholson, Chinese soprano Chen Sue and the young Australian soprano Lianne Keegan make their Opera North debuts.

Sung in Italian.

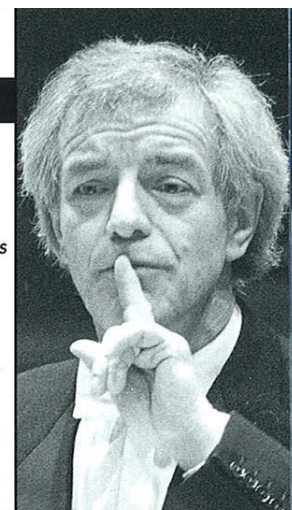
SUN
16th
FEB

HALLE ORCHESTRA

Bridgewater Hall, Manchester

Sunday 16 February. 7.30pm

A chance to visit the Hall in their new home. Designed to revolutionise concert-going in the North West, the Hall offers the ultimate in comfort and facilities. Owain Arwel Hughes conducts music by Delius, Elgar and Vaughan Williams, with Hannah Roberts on cello.



NICHOLAS KRAEMER



SIMON WRIGHT



Rosendale's annual arts festival returns to the Valley this year with some exciting entertainment. The not to be missed Worldbeat party in Haslingden will have everyone dancing to the vibrant sounds of reggae, before that enjoy the bold and the bizarre dance pieces from Scranridge at the college in Rawtenstall.

Be sure to pick up a copy of the Festival brochure for full information about the many and varied events that will be happening.



WED
30th
APR

**DANCE IN RAWTENSTALL
SCRANNIDGE**

Deputy Head dance theatre present to scranridge (v)
The Studio, Accrington & Rossendale College
Wednesday 30 April 7.30pm
Tickets: £4.50/£3 concs

Scranridge use bold choreography and bizarre dramatic narrative to create an interaction between theatre and dance. They aim to challenge and attract an audience with their funny, powerful, down-to-earth pieces. The 3 short pieces 'to scranridge (v)' illustrate the Company's style and aims.

EXPECTORANT TASTER traces tensions underlying conformity in a bedsit-bound woman torn between timidity and assertiveness.

JOCK TAIMSIN'S BAIRNS challenges distinctions between dance and theatre by devising character and story line from physical starting points.

TINY DOWNFALLS traces the increasingly frenetic contest for power between two mutually murderous sisters and treads the precarious line between laughter and horror.

Presented IAW Accrington & Rossendale College



SAT
3rd
MAY

**ROSSFEST WORLDBEAT PARTY
DRED & FRED & THE IRONWORKS
CREW**

with I n I Oneness
Public Hall, Haslingden
Saturday 3 May
D.J. from 8pm, Band 9.30pm
Tickets: £4.50/£3 concs

Dred and Fred are regarded as pioneers of digital roots reggae. Since emerging from under the wing of the mighty Jah Shaka and following the release of their classic debut album, 'Ironworks', they have gone on to encourage a host of imitators of the Dred & Fred style. Their music is instantly recognisable and when these guys team up to play live with vocalists, The Ironworks Crew, they leave the audience spellbound - you'll be clamouring for more!



DRED & FRED



SUN
4th
MAY

A MUSHAIRA FOR ROSSFEST

Public Hall, Haslingden
Sunday 4 May 7.30pm
All Tickets: £1

This evening of Urdu poetry is now firmly established as a highlight on the calendar. A unique communal poetry experience featuring Asian poets from around the country.

SCRANNIDGE



THUR
27th
FEB

**COMPANY PARADISO
present
ENTER THE CLOWN**

The Studio, Accrington & Rossendale College
Thursday 27 February 7.30pm
Tickets: £4.50/£3 concs

Company Paradiso has grown out of the much respected Talking Pictures which came to its natural end last year. Company Paradiso creates movement based theatre rich in imagery, working on scripts written specially for its physical style. Enter the Clown is an adaptation of Heinrich Boll's classic German novel The Clown. It is a vibrant tragicomedy set in Germany in the 1960's, about the artist in a society where 'you can't put your finger on too many wounds.' The evocative story of a satirical clown who runs into the power structures which surround him - the establishment, the Church, his family, finally his lover- and is forced to make heart wrenching choices.

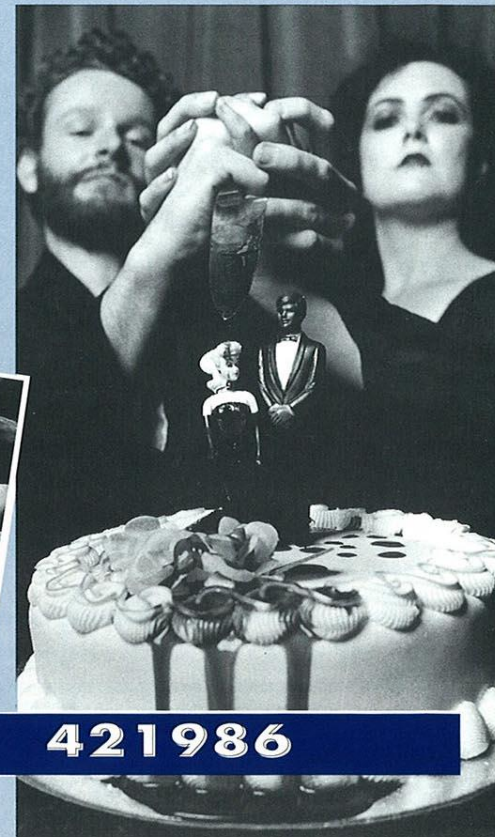
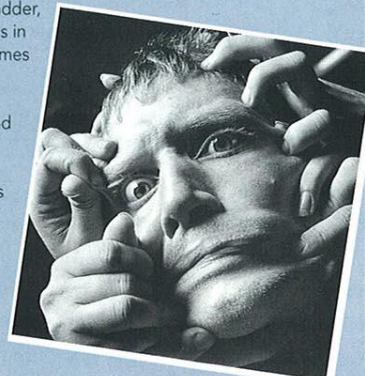
TUE
18th
MAR

**CUSTARD FACTORY
THEATRE COMPANY
presents
MACBETH**

Tuesday 18 March 7.30pm
The Studio, Accrington & Rossendale College
Tickets: £4.50/£3 concs

Custard Factory's highly charged performance style is brought to Shakespeare's blood thirsty and bewitching masterpiece to create an eerie and evocative production. Using music and movement interwoven with the text CFTC examines Macbeth's world. Driven by ambition and lured by tantalising prophecies, Macbeth and his wife climb the social ladder, leaving a trail of bodies in their wake. With costumes by the UK's funkiest designers, dynamic physical performers and DJ mixed music, the show will appeal to purists and newcomers alike.

Presented IAW
Accrington &
Rossendale College



TEL: 01282 421986

EVENTS IN HASLINGDEN

1997

HASLINGDEN - PROJECT ONE 0 ONE

Haslingden Community Literature and Performance Project

Project One 0 One is the most recent project to come out of the Action for Haslingden regeneration programme. Based in the Public Hall on Regent Street, coordinator Jean Sprackland will be initiating a programme of literature based events over the next 4 years. There will be opportunities for Haslingden residents to participate in creative writing workshops in all local languages, and to make use of a community publishing facility at the Public Hall. Future plans include a regular Writing Advice Desk and an Open Floor Performance Poetry Night.

Jean can be contacted on 01706 831260 for further information or to discuss your ideas.

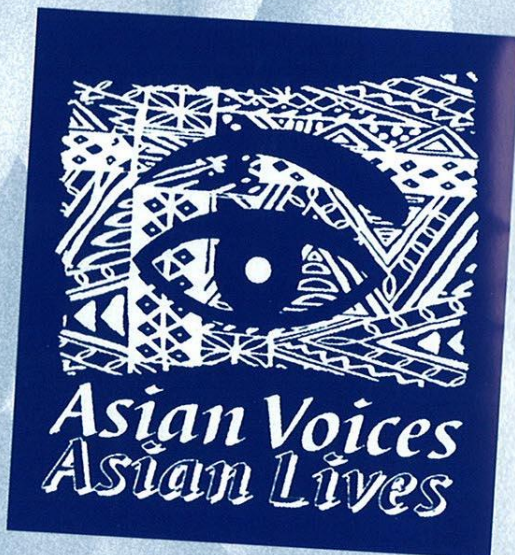
Project One 0 One is supported by Rossendale Borough Council and the Action for Haslingden Partnership

TUE
18th
FEB

ASIAN VOICES ASIAN LIVES

Public Hall, Haslingden
Tuesday 18 February 7.30pm
All Tickets: £1

Liverpool based funky-fired collective of British Asian artists with their current show **COOKING UP A STORM**. Voices testifying to unity, positivity and growth. Lives reflected through an infusion of urban, personal, metaphysical and jazz poetry with bhangra, Indian classical and rumba rhythms. All stirred up with lashings of comedy, dance, satirical improvisation, drama and song. A wickedly original unmissable masala.



SUN
4th
MAY

A MUSHAIRA FOR ROSSFEST

Public Hall, Haslingden
Sunday 4 May 7.30pm
All Tickets: £1

This evening of Urdu poetry is now firmly established as a highlight on the calendar. A unique communal poetry experience featuring Asian poets from around the country.

RURAL ARTS

Do you live in a village or smaller rural community? We are agents for a special Rural Arts Fund and can offer grants towards projects which:

- Involve a community or group working together
- Are creative and a new departure for your community
- Say something about your community or surroundings in the present or future rather than the past
- Have a majority of adult participants
- Have a lasting effect

ANY GROUP CAN APPLY!

**Contact:
TRACY AT MID PENNINE
ARTS ON 01282 421986
for further details or to
discuss any ideas you may
have.**

PROJECTS FOR PEOPLE

TUE
14th
JAN

EAST LANCS STREET BAND ...AND THE BEAT GOES ON...

Burnley Youth Theatre

Tuesdays 7.00-9.15pm beginning 14 January

You may have seen them playing funky versions of Christmas Carols in Burnley Town Centre. Sessions are continuing in the New Year and run right through to March. Why not join us?

Supported by Burnley Borough Council, NWAB, Lancashire County Council, Lancashire Y & C Service

SQUASHED

3rd
- 8th
FEB

PENDLE DANCE DEVELOPMENT PHASE III AIR DANCE IN RESIDENCE

3-8 February

A number of groups from the borough will be working with this all male dance company over the week to produce a large scale community dance performance on Saturday 8 February. Air Dance will also be performing their show Squashed. It promises to be an exciting night!

(See under Dance for performance information.)

Supported by Pendle Leisure, County Dance Development, NWAB



10th
- 15th
FEB

DANCE ACCESS -THE FAST TRACK (DAFT)

Great Harwood Youth & Community Centre.
10-15 February

Hot on the heels of Air Dance

Dance Access -the **Fast Track** hits Hyndburn. A performance piece based on stories written by local people will be created during half term week. Young people will have the opportunity to work with professional dancers, designers and a composer to create a community dance performance for local people.

Supported by Arts Council of England, Hyndburn Borough Council, County Dance Development, NWAB

FEB-
JUNE

ROSSENDALE AMATEUR YOUTH SOCIETY

February-June

RAYS will be working with a range of different artists to learn new performance skills which will then be applied to street theatre pieces which will be performed at Rossendale Carnival in the summer.

Supported by Rossendale Borough Council

JAN-
AUG

GENERATIONS

In this International Year Against Racism and the independence celebrations of India and Pakistan this umbrella project kicks off with a ceramic tile project in Accrington, a music project in Rawtenstall and literature /performance in Haslingden. The year will also see projects in video, drama and textiles. All projects will concentrate on the broad theme of the contrasting experiences of the different generations of our Asian communities. A celebration of all the activities will take place at the Mid Pennine Gallery in August. *Supported by Lancashire County Council, Library Services, Stocks Massey, NWAB, Hyndburn Borough Council, Rossendale Borough Council*

FEB-
MAR

IN SONG WITH EARBY!

February-March 1997

Lancashire Musician in Residence Pete Moser will be creating a parish map of Earby and the surrounding area through song writing workshops with local groups. No experience is necessary, just an enthusiasm to try something new!

IAW Lancashire Music Projects, Lancashire Youth & Community Services, NWAB, Lancashire County Council

For more information on these extended projects please contact Jacky on:

TEL: 01282 421986

FREE
ADMISSION

MID PENNINE GALLERY

FREE
ADMISSION

JANUARY 11 TO FEBRUARY 15

FEBRUARY 22 TO MARCH 22

THE GLOBE SHOW

Four artists working at the Globe Artist Studios demonstrate the range and quality of work being produced locally. Margaret Mytton's paintings reflect an unusual perspective on destruction in the natural environments. Don McKinlay's work depicts the conflict in recent wars as portrayed by the media. Gary Lomax's 'snapshot' images of individuals at work and play presents a simplistic, uncluttered series of silhouettes reflecting fun and energy in everyday life. The cowboy theme of Bob Nancollis is colourful, cheeky and aims to reintroduce us to the traditions and history we so readily ignore. Bob will be holding a series of workshops (see under Activities)

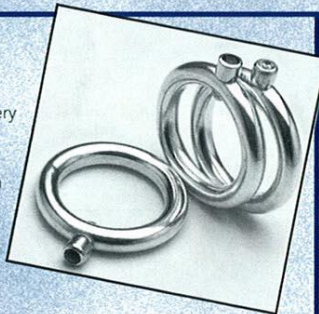


D. MCKINLAY

The Globe Studios are hosting an exhibition to run concurrently featuring the work of further artists. (see under Visual Arts in Rossendale)

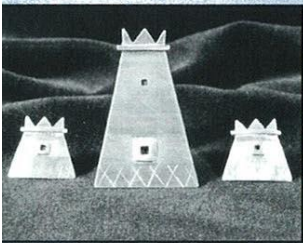
JEWELLERY MAH RANA

Mah Rana makes gold and silver jewellery in simple bold forms shot through with colour from semi-precious stones, the effect is a range of distinctive and much sought after jewellery. She has also created one-off pieces for leading fashion designers, Phillip Tracey and Gianni Versace.



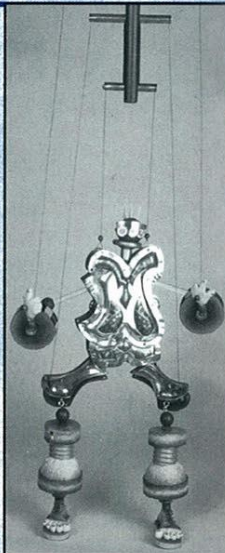
SARAH JANE BENNETT

The Kasbahs, temples and dwellings of North Africa with their small, dark windows and defensive walls are the inspiration for these pieces. Simple forms with bold shapes recessed and darkened for emphasis, decorative 'castellations' underlined by touches of brass contrasting with smooth silver 'walls'.



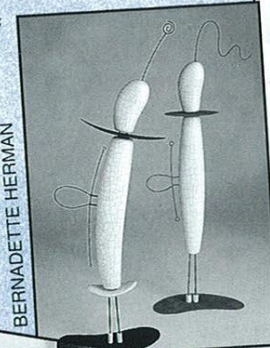
CRAFT SARAH PARTRIDGE

Sarah makes humorous puppets that appeal to all ages, they have their own often bizarre personalities, based on friends and memories. Made in papier mache, wood, found objects and metal the pieces are very tactile and vibrantly coloured.

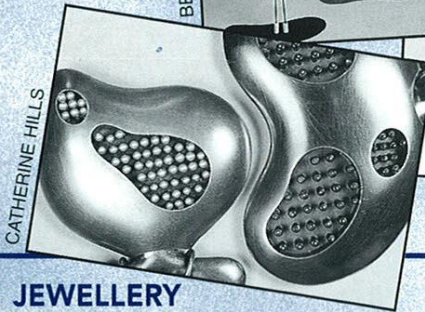


EARTHWORKS

An exhibition of ceramic work from several of the country's leading makers aims to show the diversity and scope of contemporary ceramics. From organic forms inspired by the rugged moorland landscape to work that illudes to the human form, the sensuous shapes enhanced by mark-making and earth tinted glazes.



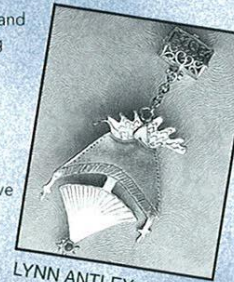
BERNADETTE HERMAN



CATHERINE HILLS

JEWELLERY CATHERINE E. HILLS

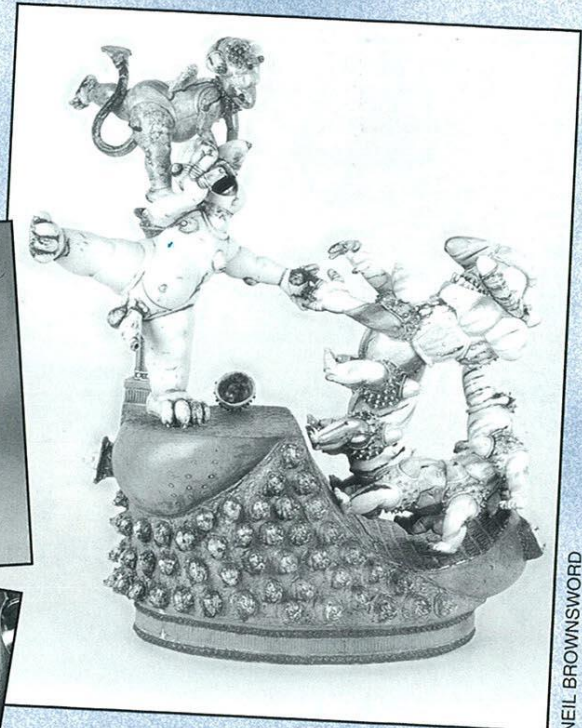
These unusual pieces take inspiration from natural forms to combine sensuous liquid shapes with smooth, highly finished surfaces. Oxidised silver in juxtaposition with yellow gold and coloured glass produce striking colour contrast.



LYNN ANTLEY

LYN ANTLEY

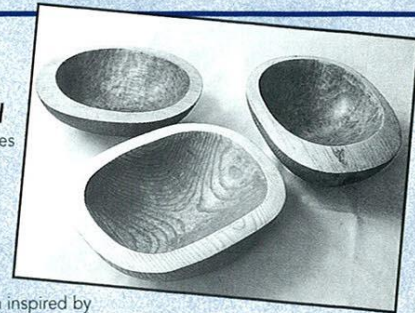
A range inspired by childhood stories and ancient cultures to produce amusing and innovative designs richly textured and worked in bronze, silver and patinated brass.



NEIL BROWNSWORD

CRAFT DAVID GRIFFITH

David specialises in hand carved sculptured holloware in a variety of indigenous timbers. The forms are often inspired by landscape especially the containing forms of valleys and hills. As well as being functional the bowls stand as a statement in their own right, reflecting a spiritual energy of the tree from which they emanate.



YORKE STREET, OFF MANCHESTER ROAD, BURNLEY BB11 1HD.
TELEPHONE: 01282 421986

OPEN MONDAY TO SATURDAY 10am - 5pm
TUESDAY 10am - 1pm

MID PENNINE GALLERY

HOW TO FIND US

The Mid Pennine Gallery is a part of the Mechanics building in the town centre. Approach from Yorke Street or via the Mechanics foyer.

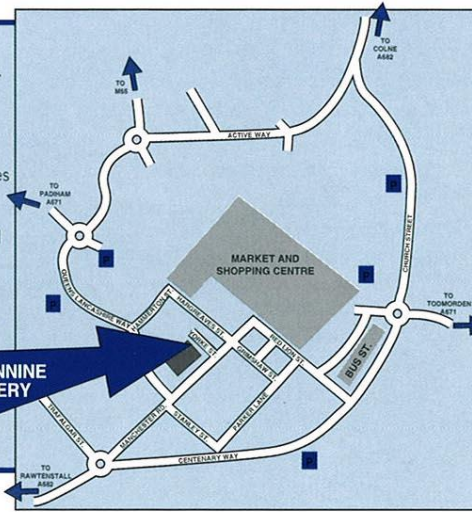
BY TRAIN: Burnley is served by three stations with regular services from Leeds and Preston. Enquiries 'phone 01282 425421.

BY CAR: See map for car parking, all car parks are just a few minutes walk from the Gallery.

BY BUS: Regular services stop outside the Mechanics from the local area/Manchester/Preston. Enquiries 'phone 01282 423125

EDUCATION: Tuesday afternoon 1pm - 5pm reserved exclusively for schools, colleges and art group study sessions. If you would like to use the space phone Julian on 01282 421986.

EASY ACCESS: The Gallery has full ramped access at the rear of the building and adjusted toilet facilities. Guide dogs are welcome.



Associate Member of Lancashire's Hill Country

VISUAL ARTS IN ROSSENDALE

THE GLOBE SHOW

12 January - 15 February
Globe Studios
Unit 11, Globe Mill
Burnley Road East, Waterfoot
Tel: 01706 210867

Showing concurrently and featuring the work of further artists within the Globe Studio space. In addition they will be holding two Open Days when you will have the opportunity to meet individual artists and tour the Studio.

Open Days: Saturday 18
and Sunday 19 January. 10am - 4pm.

The Globe Studios will host a series of workshops - see under Activities



RUTH EVANS

ACTIVITIES FOR SCHOOLS & COLLEGES

WED
29th
JAN

'CACTUSVILLE LANCASHIRE' WORKSHOP with BOB NANCOLLIS

Wednesday 29 January
Suitable for Year 6 pupils.

Using the drawings of Desperate Dan as inspiration this workshop will provide an enjoyable introduction to a variety of drawing and art techniques. The children will draw our local area and people in the style of Cactusville. Bob will take the finished drawings to create a giant picture of Cactusville, Lancashire for future display in a public space. To book please contact Julian on 01282 421986

WED
5th
FEB

TALK BY MARGARET MYTTON

Mid Pennine Gallery
Wednesday 5th February

Artist Margaret Mytton will give a talk and slide presentation to Art 'A' level/Foundation students about the value of working from within a studio context.

For further information please contact Julian on 01282 421986

26th
- 27th
FEB

CALLIGRAPHY WORKSHOPS with SHAKIL SALAM

Central Library, Accrington
Wed 26, Thurs 27 February

Beautiful handwriting or calligraphy is not confined to any one language, religion or culture. The Arabic script is closely aligned to calligraphy due to its character and is an ancient art which came into prominence with the advent of Islam over 1400 years ago. Shakil will lead workshops with primary and secondary schools in Hyndburn and Rossendale.

To book please telephone Abdul Kheratkar on 01254 872385
Presented IAW Lancashire County Libraries Ethnic Services

FEB

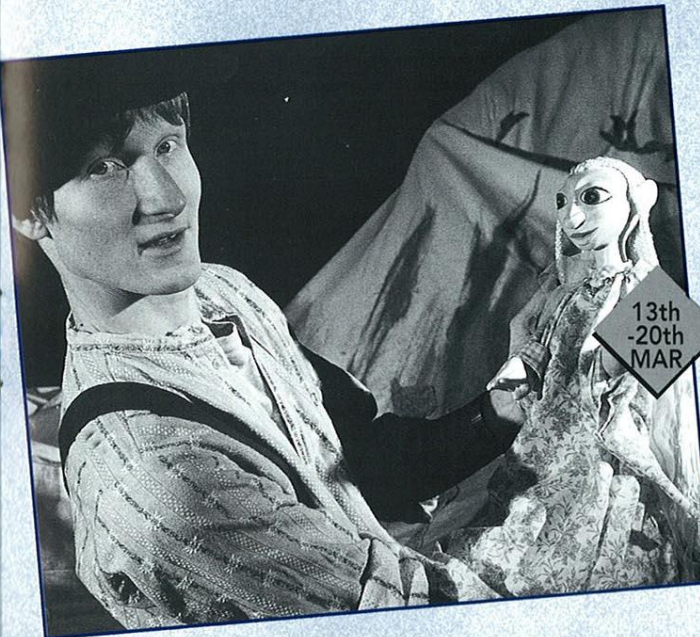
M6 THEATRE COMPANY present '2 DAYS AS A TIGER'

February
M6 Theatre Company's 100th production is their first ever bilingual theatre project. Focusing on themes of friendship and the environment Doh Din Kay Shere/Two Days as a Tiger uses Urdu, Punjabi and English to create rich, absorbing theatre. With music and design reflecting this blend of cultures this play enhances a positive attitude towards social diversity. To book please contact Janet on 01282 421986

13th
- 20th
MAR

Todmorden Schools Tour LEMPEN PUPPETS present The MELTING PRINCESS

13 - 20 March
High up in the Swiss mountains there is a kingdom of ice people. They like it freezing cold but when Harrissa of the fiery breath calls, things get dangerously hot. This fantastical story combines delightful puppetry and dramatic storytelling. For further information please contact Janet on 01282 421986



For more information on these activities:

TEL: 01282 421986

ACTIVITIES

JAN-
FEB

PUTTING YOURSELF IN THE PICTURE - WORKSHOPS AT THE GLOBE

Unit 11, Globe Mill, Burnley Road East, Waterfoot

During the exhibition at the Globe Studio's a series of workshops will take place.

Saturday 18 January	10am - 4pm	Print
Sunday 19 January	10am - 4pm	Mixed-Media
Saturday 25 January	10am - 4pm	Monoprint
Saturday 1 February	10am - 4pm	Exploring the use of materials - Collage & Textiles
Saturday 8 February	10am - 4pm	Exploring the use of natural materials

Sponsored by The Waterfoot Business and Residents Association

SAT
25th
JAN

BOB NANCOLLIS WORKSHOP

Mid Pennine Gallery

Saturday 25 January

Cowboy Time

Bob will recreate the Wild West using Lancashire as the backdrop. As part of an ongoing large scale work entitled Cactusville Lancashire he is holding an open session for you to 'Drop in and have a go' at creating your very own cowboy.

(see under Schools Activities for Cactusville Lancashire)

ASIAN ARTS

TUE
18th
FEB

ASIAN VOICES ASIAN LIVES

Public Hall, Haslingden

Tuesday 18 February 7.30pm

All Tickets: £1

(see under Events in Haslingden)

SUN
4th
MAY

A MUSHAIRA FOR ROSSFEST

Public Hall, Haslingden

Sunday 4 May 7.30pm

All Tickets: £1

(see under Rossfest)

20th
JAN -
1st FEB

RAKEEB HASSAN

20 Jan - 1 Feb

Colne Road Library, Burnley

This exhibition by a former journalist and published poet from Bangladesh is both thought provoking and inspiring. Rakeeb manages to blend artistic genres, handwriting poetry onto his mixed media works.

Largely semi-abstract, they are based on the serenity of life and his desire to show that harmony is in all that is around us. He frequently portrays women because 'they contribute to the upholding of peace, of unity in a society.' Please contact the library for opening hours. (Closed Wed & Sun)

IAW Bangladesh Community Council

13th,
14th, 15th
MAR

ASPECTS OF ASIA

Town Hall, Colne Road, Brierfield

Thur 13, Fri 14, Sat 15 March 10am - 4pm daily

Admission FREE

A three day festival celebrating the cultural diversity and richness of Asian arts. A packed programme is promised featuring daily demonstrations of calligraphy, cookery, beauty therapy, dress making and garland making together with henna hand painting. Music will be provided by **MANJU**, accompanied by both male and female singers. Not to be missed is an exhibition of work by ceramicist **SHAHIDA HAIDER CHOUDRY** who will also be holding workshops. Please telephone Julian on 01282 421986.

DANCE

SAT
8th
FEB

AIR DANCE present SQUASHED

Mansfield High School

Saturday 8 February 7.30pm

Tickets £3/£2 concs

'Twenty Four hours in the life of four men Squashed into sixty minutes'. Cheshire's all male company in a collection of new dance pieces about living together, about the sound of next door arguing, about big events in small places.

The evening will begin with a community performance from local young people based on interpretations of the word squashed.

WED
30th
APR

SCRANNIDGE. DEPUTY HEAD DANCE THEATRE

present 'TO SCRANNIDGE (V)'

Wednesday 30 April 7.30pm

Tickets: £4.50/£3 concs

Scrannidge use bold choreography and bizarre dramatic narrative to create an interaction between theatre and dance. They aim to challenge and attract an audience with their funny, powerful, down-to-earth pieces.

The 3 short pieces 'to scrannidge (v)' illustrate the Company's style and aims.

(See under Rossfest)

Presented IAW Accrington & Rossendale College

THUR
1st
MAY

FOOTWORKS PERCUSSIVE DANCE ENSEMBLE

Municipal Hall, Colne

Thursday 1 May 7.30pm

Tickets: £9/£8/£7 (concessions available)

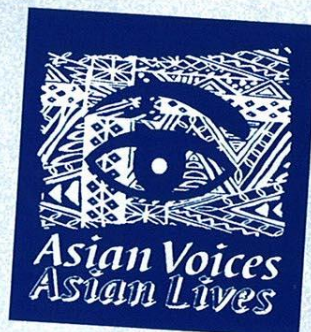
They brought the house down as guest artists in the London run of Riverdance, now this internationally recognised percussive dance ensemble from America is returning for a third sell-out tour. They specialise in step-dances of bewildering complexity, from Lancashire clog to the slapping routines of the American South.

'It is fast, furious, amazingly skilful and, above all, vastly entertaining. The Journal, Newcastle.

Box Office Telephone No. 01282 661234

A joint promotion with Pendle Borough Council

FOOTWORKS



TEL: 01282 421986

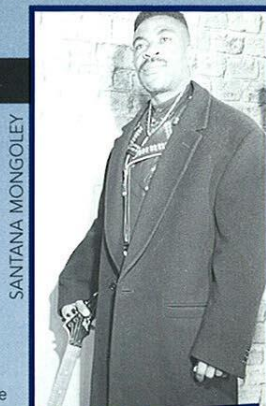
WORLD BEAT

SAT
1st
FEB

SANTANA MONGOLEY and LES ZAZA

Public Hall, Haslingden
Saturday 1 February Doors 8pm. Music 8.45pm
Tickets: £4.50/£3 concs

Led by guitarist Santana Mongoley this group of Zafrican musicians are the hottest, hardest and wildest African band to hit the dance halls and clubs of England. Drawing inspiration from original and folkloric Congolese and Zafrican Rhumba this stunning 8 piece band produce a rich and authentic modern Soukous music that is guaranteed to have you dancing. Fiery, raw, yet sweet guitar lines with soaring vocal harmonies and the natural drumming and dance routines will delight and excite.



SANTANA MONGOLEY

SAT
1st
MAR

INNER SENSE

Public Hall, Haslingden
Saturday 1 March Doors 8pm,
Music 8.45pm Tickets: £4.50/£3 concs
'the hottest percussive samba burn-out all year....DJ Chico Malo, Casa Latina, Leeds Scorching samba posse from Manchester, Inner Sense boasts a full-ahead 9 piece bateria of drummers plus dynamite rapper Desnya. Busting with momentous ragga, Rio samba, samba reggae and other demon Brazilian rhythms they produce the most explosive set your likely to clock all year.

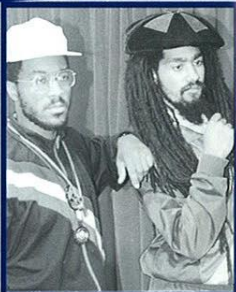


INNER SENSE

SAT
3rd
MAY

DRED & FRED & THE IRONWORKS CREW with I n I Oneness

Public Hall, Haslingden, Sat 3 May
D.J. from 8pm, Band 9.30pm, Tickets: £4.50/£3 concs
Dred and Fred are regarded as pioneers of digital roots reggae. Since emerging from under the wing of the mighty Jah Shaka and following the release of their classic debut album, 'Ironworks', they have gone on to encourage a host of imitators of the Dred & Fred style. Their music is instantly recognisable and when these guys team up to play live with vocalists, The Ironworks Crew, they leave the audience spellbound - you'll be clamouring for more!

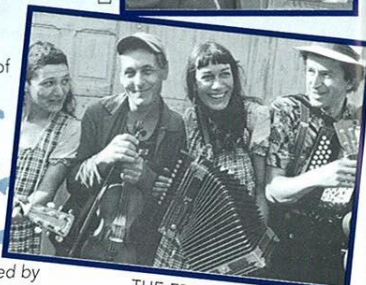


DRED & FRED

FRI
23rd
MAY

THE FRENCH ALLIGATORS

Town Hall, Accrington
Friday 23 May Doors 8pm, Music 8.45pm
Tickets: £4.50/£3 concs
The 'brilliant and eclectic' French Alligators are one of the most exciting overseas Cajun bands to tour this country. Their appearance at the BBC Radio 1 Music Live 95 festival drew a great deal of media interest, not least from presenter Jools Holland who cited them as one of the bands he just couldn't wait to see! With its driving rhythms and plaintive melodies Cajun music has an irresistible appeal. Authentic Cajun food will be available.
Worldbeat is a Lancashire Arts Unit initiative presented by Mid Pennine Arts in association with Rossendale Borough Council/Hyndburn Borough Council with financial support from NWAB.



THE FRENCH ALLIGATORS

POETRY

THUR
6th
MAR

SAY SO POETS present THE WRONG SPECTACLES (WORKING TITLE)

Mid Pennine Gallery, Yorke St, Burnley
Thursday 6 March 8pm
Tickets: £4/£3 concs (Includes a glass of wine)

To celebrate International Womens Week MPA are delighted to welcome back Carmen Walton and Mandy Precious, two talented and gifted stand-up poets who have enjoyed a 'dazzling' year since MPA audiences last saw them, with guest spots on radio and TV and a second book imminent. Their poetry takes a wry, humorous look at life, and the lives of women in particular.



COMEDY

SAT
22nd
MAR

HELL'S BELLES! present THE HELL'S BELLES EXPERIENCE!

Foyer Bar, Hippodrome Theatre, Todmorden
Saturday 22 March 8pm
Tickets: £4.50/£3 concs

'Who the hell are Hell's Belles?' Their answer is, two ordinary women who have decided to do something extraordinary...to stop talking about the rights and wrongs of life and make an active statement about it... With sketches and songs to make you laugh, cry (and wonder why) and keep you thinking for a long time after. From slimming to prostitution, from homelessness to the NHS and much, much more...



MUSIC

SAT
19th
APR

SHEER BRASS 1997

Town Hall, Todmorden
Saturday 19 April 7.30pm
Tickets: £5/£3 concs

Todmorden Old Brass Band presents The Marple Band, British open Champions 1996. Formed in 1990 The Marple Band has progressed to become one of the top brass bands in the UK. They have performed in such prestigious places as the Bridgewater Hall and the Royal Albert Hall and are recognised as excellent concert performers. Don't miss their appearance in Todmorden.
Presented IAW Todmorden Old Brass Band



JAZZ

THUR
24TH
APR

THE JOHN CRITCHINSON/ART THEMEN QUARTET

Blue Note Club, Burnley Road, Todmorden
Thursday 24 April Doors 8pm, Music 8.45pm
Tickets: £4.50/£3 concs

Probably best described as 'Progressive Modern Jazz' the format revolves around standard or Jazz compositions with the accent on improvisation from all the musicians both collectively and individually.

The Quartet generates it's own special character from the unique musical style of Art Themen - saxophone and John Critchinson - piano, backed by the equally brilliant and creative playing of Dave Barry - drums and Leon Clayton - bass.



Entertainment

programme

QUICK GLANCE

DATE	EVENT	VENUE
EXHIBITIONS		
11 Jan - 15 Feb	The Globe Show	Mid Pennine Gallery, Burnley
12 Jan - 15 Feb	The Globe Show	Globe Mill, Waterfoot
22 Feb - 22 Mar	Earthworks	Mid Pennine Gallery, Burnley
20 Jan - 1 Feb	Rakeeb Hassan	Colne Road Library, Burnley
JANUARY		
Sat 25	Cowboy Workshop with Bob Nancollis	Mid Pennine Gallery, Burnley
Wed 29	Workshop for schools, by Bob Nancollis	
Thurs 30	Excursion: Opera North	Leeds
FEBRUARY		
Sat 1	Worldbeat: Santana Mongoley	Public Hall, Haslingden
Mon 3 - Fri 7	Air Dance Residency	Pendle
Wed 5	Talk: Margaret Mytton	Mid Pennine Gallery, Burnley
Sat 8	Air Dance	Mansfield High School
Thurs 13	Camerata: Wright/Perkins	Municipal Hall, Colne
Mon 10 - Sat 15	DAFT Project	Gt Harwood, Y& C Centre
Sun 16	Halle Excursion	Manchester
Tue 18	Asian Voices Asian Lives	Public Hall, Haslingden
Wed 26/27	Calligraphy Workshop	Hyndburn/Rossendale Schools
Thurs 27	Company Paradiso	College Studio, Rawtenstall
MARCH		
Sat 1	Worldbeat: Inner Sense	Public Hall, Haslingden
Thurs 6	Say So Poets	Mid Pennine Gallery
Thurs 13 - Sat 15	Aspects of Asia	Brierfield Town Hall
Thurs 13 - Thurs 20	Lempen Puppets	Todmorden Schools Tour
Tue 18	Custard Factory	College Studio, Rawtenstall
Sat 22	Hell's Belles!	Hippodrome Theatre, Todmorden
Thurs 27	Camerata: Kraemer/Petri	Municipal Hall, Colne
APRIL		
Sat 19	Todmorden Old Brass Band	Town Hall, Todmorden
Thurs 24	John Critchinson/Art Themen Quartet	Blue Note Club, Todmorden
Wed 30	Scrannidge Dance Co	College Studio, Rawtenstall
MAY		
Thurs 1	Footworks	Municipal Hall, Colne
Sat 3	Rosifest Worldbeat : Dred & Fred	Public Hall, Haslingden
Sun 4	Mushaira	Public Hall, Haslingden
Fri 23	French Alligators	Town Hall, Accrington

Mid-Pennine Arts gratefully acknowledges the financial assistance of the Borough Councils of Burnley, Hyndburn, Pendle and Rossendale, the Town Council of Todmorden, North West Arts Board, Yorkshire and Humberside Arts and Lancashire County Council Arts Unit.

The work of Mid Pennine Arts is supported by the Corporate Membership of Co-operative Retail Services Ltd. and by the Membership of 57 non-profit making local organisations. Assisted by Joe Houghton and Grace Dearborn Ltd. through Business in the Arts: North West.

The information in this brochure is correct at the time of going to press but MPA reserves the right to cancel or amend the programme due to unforeseen circumstances.

You can now e. Mail us on:
Midpen @ globalnet . co . uk



Burnley Borough Council

