

**visual arts and crafts**

**GALLERY**

**JEWELLERY**

*Other Exhibitions*

**FAMILY EVENT!**

**Rock**

**speakeasy night**

**Special Activities**

**haslingden fun day**

**EXHIBITIONS**

*Playscheme Specials*

**Craft Showcases**  
*Jazz entertainments outdoors*

# A woman's place is <sup>not necessarily</sup> in the home

## WOMEN'S WRITING

MPAA Gallery  
June 2 - 14

An exhibition of nearly 300 books selected for the 1986 Feminist Book Week, and promoted by the National Book League. An important and stimulating exhibition!

## K.N.T. POETRY READINGS

Talbot Hotel, Burnley  
Monday  
9 June 8.00 p.m.

Pauline Kirk, Dorothy Nimmo and Anna Taylor are three women writers from the North of England. All had work included in the recently published Rivelin Grapheme anthology "Purple and Green - Poems by 33 Women Poets". They have also had individual works published. Pauline Kirk and Anna Taylor are both well-known as literary critics and are also currently involved in teaching. Dorothy Nimmo's situation is rather different, having given up acting to keep a farm and write. Although Dorothy's work has a distinct feminist bias all three women write on a wide range of subjects and together give a very broad view of the life situations and experiences. They write in a variety of forms from ballads to sonnets and in a range of styles including satire. The poems they read will be grouped according to themes, a device which they have discovered enhances understanding of their work.

## SENSIBLE FOOTWEAR THEATRE COMPANY presents LADIES FIRST



Duke of York Hotel  
Colne Road, Burnley  
Tuesday 10 June

This group of three women devise their own material, taking as their themes such issues as advertising, bored and frustrated housewives, male humour and rape. Surprisingly they create a fast-paced sparkling show which comes, not like a sermon but "like a blast of fresh air- wickedly funny, highly irreverent and at times thoroughly discomfoting" - Lis Burrane, Hendon Times. "It is hoped" say Sensible Footwear "that Ladies First will break down some of the barriers which keep women in our society docile, passive and unfulfilled". Can you afford not to see it?

To mark National Feminist Book Week, Mid-Pennine Arts Association will stage an exhibition of books by women and promote three performances by outstanding all-women groups. That is not to say, however, that the performances are for all-women audiences! If you enjoy good writing, first class theatre or excellent music these events are for you.

# JAZZAWAKI



Falcon Hotel, Burnley  
Wednesday 11 June

Doors open 8.00 p.m. Performance 9.00 p.m.

Jazawaki is a five-piece all-girls band from Newcastle-on-Tyne. They come from widely differing musical backgrounds and between them they've done quite a lot! - including busking and session work. But these days they generally top the bill. They have done Radio 1 broadcasts with Richard Skinner and Janice Long and taken part in the Oxford Road Show. As for the music - well it's wacky!

Admission to each event £2 concessions £1

Series Discount  
Book for all three events together pay for only two.



# Rock

Jazz-Rock Workshops  
 Monday 7 - Friday 11 July  
 Do you want to play ROCK?  
 Do you want to play JAZZ?  
 Do you want to play BETTER?

If the answer to any of these questions is YES then you need to be in Burnley in July. Why?

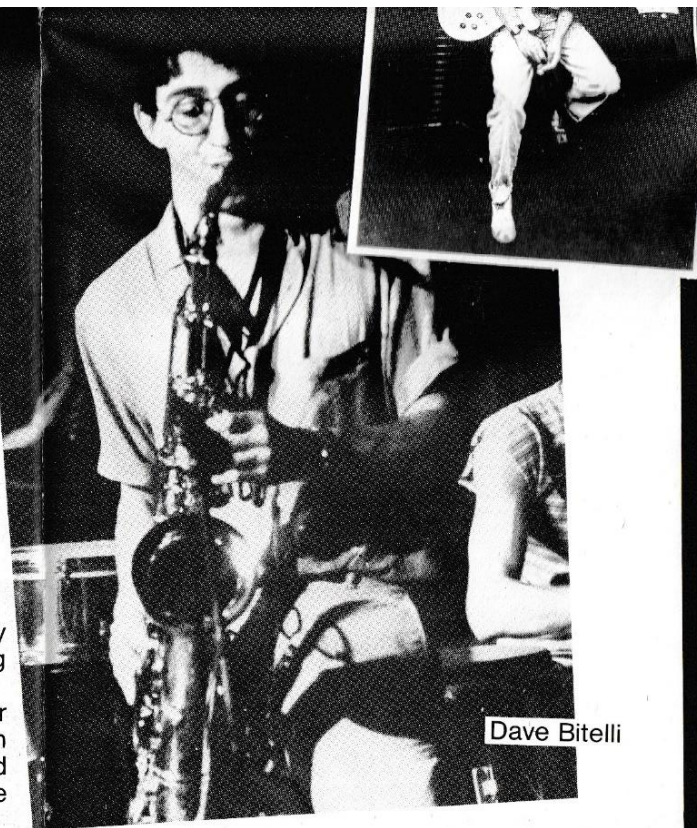
Because we've managed to pin down six of the very best musicians in Britain to lead a week-long Jazz-Rock School!

Hotfoot from Bracknell comes Full Circle; Rick Taylor on trombone, Adrian Tilbrook on drums, Paul Flush on keyboards and Steve Pearce on bass will be aided and abetted by London's leading saxophonist Dave Bitelli and local mega-star Gary Boyle on guitar.

This is a sextet of Musicians' Musicians! Their pedigrees are a mile long with credits that include Elton John, Back Door, Alexis Korner, Stan Tracey, Joan Armatrading, Spitting Image and Live Aid.

The course is a unique opportunity for players of all abilities to develop their skills under the guidance of top musicians who are also expert and experienced tutors. It will include master classes, band work and improvisation.

A joint-promotion with Burnley Borough Council and supported by Burnley College of Arts & Technology and the Musicians' Union.



Dave Bitelli

There will be two formal sessions each day 10 am - 1 pm and 2 pm - 5 pm with informal evening sessions arranged by the tutors.

Fees - £35, or £25 for the unwaged.

Financial assistance may be available for students from the Stocks Massey bequest. Priority given to Burnley residents. For further information please write to Borough Recreation Officer. Numbers will be limited so book now to be sure of a place!

and local guitar. This band is Burnley fresh from Bracknell and buzzing from our workshops they are the most together outfit in the land. This gig is electric!  
 Admission £2 concessions £1  
 BAR AVAILABLE  
 Friday 11 July Burnley College, Ormerod Road.  
 8 till late

## BOOK FOR MPAA EVENTS AT OUR OFFICES OR AT ANY OF OUR AGENTS LISTED BELOW:-

- ACCRRINGTON** Althams Travel Services  
Hyndburn Recreation & Leisure Dept.  
Public Library
- BACUP** Althams Travel Services
- BLACKBURN** Danscene, 298 Standish Street
- BURNLEY** Bury Metro Arts, Derby Hall, Market St.
- BURY** Althams Travel Services
- CLITHEROE** Tourist Information Centre,  
Church Walk
- COLNE** Althams Travel Services, 13 Albert Rd.  
Pendle Leisure Services,  
Bank House, 61 Albert Road
- HASLINGDEN** Public Library, Deardengate
- NELSON** Althams Travel Services,  
1 Scotland Road  
Pendle Leisure Services,  
19 - 23 Leeds Road
- RAWTENSTALL** Ellen Smith (Tours) Ltd., 4 Bury Road  
Central Library, Queen Square  
Rossendale Recreation & Leisure  
Dept. 41 - 45 Kay Street
- TODMORDEN** Althams Travel Services, 16 Halifax Rd.

**SUMMER SPECIAL - FOUR FOR THE PRICE OF THREE!**  
 Buy three tickets, get one free.

## SPECIAL FAMILY EVENT!

## haslingden fun day + speakeasy night

Saturday 3 May  
 Haslingden Sports Centre

A full day of fun and family entertainment in and around Haslingden!

**MORNING** Watch out for Happenstance Theatre Company in Haslingden Town Centre

**AFTERNOON** Performances by **HAPPENSTANCE** of Green Jack's Countdown to a Silver Summer.

**IT'S A KNOCKOUT!**  
**STREET FAIR** with stall and side-shows.

**EVENING** 8 p.m. - 11 p.m.  
**SAVANNAH SYNCOPATORS**  
 Admission £1.50, concessions £1.00  
 In 1920's costume £1.00, 50p  
**Bar and light refreshments available.**  
 A joint promotion with Rossendale Borough Council.

**HOT JAZZ  
 MUSIC  
 OF THE 1920's**

# Calendar

## MAY

### Until Friday 16

M65 COUNTRY photographic exhibition  
Calder College, Todmorden

### Friday 2 - 30

CARTOONS by NICHOLAS NEWMAN exhibition  
MPAA Gallery

### Saturday 3

HAPPENSTANCE Theatre Company at HASLINGDEN FUN DAY  
SAVANNAH SYNCOPATORS at BURNLEY BOYS BRIGADE  
CARNIVAL and at SPEAK EASY NIGHT, Haslingden

### Monday 5

PEADOR LONG at NELSON SHOW

### Sunday 18

THE FABULOUS SALAMI BROTHERS at EARBY MAY DAY

### Monday 19 - Monday 2 June

M65 COUNTRY photographic exhibition  
Colne Leisure Centre

### Saturday 24

THE FABULOUS SALAMI BROTHERS at  
TODMORDEN CARNIVAL

### Sunday 25

CAT ISLAND at BACUP FOOTBALL CLUB SUMMER GALA

### Monday 26

CAT ISLAND at GREAT HARWOOD SHOW

## JUNE

### Sunday 1

CAT ISLAND at BURNLEY BOYS CLUB GALA

### Monday 2 - Friday 13

WOMEN'S WRITING book exhibition  
MPAA Gallery

### Monday 2 - Friday 27

TERRARIA by DAVID YOUNG exhibition  
MPAA Gallery

### Friday 6 - Sunday 29

M65 COUNTRY photographic exhibition  
Haworth Art Gallery, Accrington

### Monday 9

K.N.T. POETRY READINGS  
Talbot Hotel, Burnley 8.00 p.m.

### Tuesday 10

SENSIBLE FOOTWEAR Theatre Company presents  
"LADIES FIRST"  
Duke of York Hotel, Colne Road, Burnley

### Wednesday 11

JAZAWAKI all-women, jazz-rock band  
Falcon Hotel, Whittam Street, Burnley 8.00 p.m.

### Saturday 14

BONSAI  
Accrington Town Hall 10 a.m. - 4 p.m.

### Sunday 22

MUMMARANDADA at ST. VERONICA'S GARDEN PARTY,  
Helmshore

### Saturday 28

MUMMARANDADA at ROSSENDALE CARNIVAL

## JULY

### Tuesday 1 - Thursday 31

M65 COUNTRY photographic exhibition  
Central Library, Rawtenstall

**Wednesday 2 - Thursday 31**

ARTISTIC LICENCE exhibition  
MPAA Gallery

**Monday 7 - Friday 11**

PENNINE ROCK - jazz-rock workshops  
Burnley College, Ormerod Road, Burnley

**Friday 11**

FULL CIRCLE AND GUESTS - Jazz performance by workshop  
tutors  
Burnley College, Ormerod Road, 8 till late

**Saturday 12**

MUMMARANDADA at ROSSENDALE COUNTRY FAIR

**Sunday 13**

MARINI TROMBONE ENSEMBLE at  
ROSSENDALE COUNTRY FAIR

**Sunday 27**

MUMMARANDADA at BURNLEY AGRICULTURAL SHOW

**Monday 28 - Friday 1 August**

PENDLE PRODUCTIONS present  
WIND IN THE WILLOWS

Performance and workshops

Monday 28 Stubblee Park Playscheme, Bacup

Tuesday 29 Haslingden Sports Centre Playscheme

Wednesday 30 Burnley Youth Theatre Playscheme

Thursday 31 Victoria Park Playscheme, Nelson

Friday 1 August All-weather Pitch, Sports Centre, Colne

**Monday 28 - Saturday 16 August**

HYNDBURN YOUTH THEATRE PROJECT  
Moorhead High School, Accrington

## AUGUST

**Saturday 2 - Sunday 31**

M65 COUNTRY photographic exhibition  
Pendle Heritage Centre, Barrowford

**Sunday 3**

MAJOR MUSTARD at PENDLE HIPPODROME GALA

**Monday 4 - Friday 8**

MAJOR MUSTARD in HYNDBURN PLAYSCHMES

**Monday 4 - Friday 29**

PHOTOGRAPHS by PETER SINGLETON exhibition  
MPAA Gallery

**Tuesday 5 - Saturday 30**

OPEN FELL, HIDDEN DALE photographic exhibition  
Public Library, Haslingden

**Saturday 9**

MAJOR MUSTARD at BARNOLDSWICK GALA

**Sunday 10**

MUMMARANDADA at CLIVIGER SPORTS GALA

**Sunday 17**

THE SATELLITES at RISHTON FUN DAY  
and at BELTHORN VILLAGE GALA

## SEPTEMBER

**Monday 1 - Tuesday 30**

ANIMAL MAGIC sculpture exhibition  
MPAA Gallery

**Monday 1 - Tuesday 30**

OPEN FELL, HIDDEN DALE photographic exhibition  
Pendle Heritage Centre, Barrowford

## OCTOBER

**Wednesday 1 - Thursday 31**

WARM AND WOVEN textile exhibition  
MPAA Gallery

# MEMBERSHIP

## HOW MUCH WILL IT COST?

A mere trifle!! – and increased benefits – more free tickets!! Membership rates for the year April 1st 1986 – March 31 1987.

Category of Membership	Cost	Number of free tickets
Individual	£5	8
Family	£7.50	15
Local Non-Profit-Making Organisations	£20	30
Corporate	£50	50

Membership cards are valid only for the year in which they are issued. Please note that membership privileges allow for admission only to events promoted entirely by MPAA. On joint-promotions membership entitles you to admission at the concessionary rate.

Individual and family members will be issued with vouchers. LNPO and Corporate members will receive a letter of registration.

Please bring proof of membership to all events – free entry cannot be guaranteed without!

All you need to do to join is fill in the appropriate section on the form NOW and send it to us with the correct remittance and a stamped addressed envelope.

**Why not become a member of MPAA?**

**Here are 10 good reasons why you should join us!!**

1. You will be giving vital active and financial support to the arts, not only in North East Lancashire but throughout Britain, helping us to encourage the young professionals (and not so young) who work with us.
2. You can have a voice in MPAA's decision making. Representatives from the membership are elected on to the Executive Committee at the Annual General Meeting.
3. Local Non-Profit Making Organisations are given priority over non-members when we arrange co-promotions.
4. Free use of MPAA's equipment loan service.
5. Free tickets to MPAA events.
6. Concessionary rates when your quota of free ticket is used.
7. Priority booking for MPAA workshops and excursions.
8. An invitation to the special members reception.
9. You will also receive our seasonal mailing absolutely free.
10. Most important of all – it's fun!



## MEMBERSHIP ENROLMENT FORM

Please enrol me as a MEMBER of Mid-Pennine Arts Association.

Name \_\_\_\_\_  
Address \_\_\_\_\_

Tel. Work \_\_\_\_\_

Category of Membership \_\_\_\_\_

I enclose remittance of £ \_\_\_\_\_

Signature \_\_\_\_\_

Postcode \_\_\_\_\_  
Home \_\_\_\_\_  
Date \_\_\_\_\_

Please send completed form with SAE and correct remittance to Mid-Pennine Arts Association, 2, Hammerton Street, Burnley, Lancs. BB11 1NA



# RESOURCES

Our resources are (almost) limitless! Equipment for hire or loan includes staging, lighting, display boards, musical instruments..... Our bulging information files contain a wealth of material on arts courses, major awards and just about every aspect of the arts - and crafts. Our What's On information is like ripples on a pool from MPAA's centre in ever widening circles to Lancashire, Yorkshire and Manchester in the North West to London, Edinburgh, the UK and abroad! All these are available for consultation or booking throughout office opening hours.

- MUSIC ● THEATRE ● DANCE  
POETRY ● WORKSHOPS  
MIME ● PUPPETS  
CRAFTS ● BOOKS  
EXHIBITIONS  
DANCE  
JAZZ

Name \_\_\_\_\_  
Address \_\_\_\_\_  
Postcode \_\_\_\_\_

**MAILING LIST APPLICATION FORM**  
**MAKE SURE YOU KNOW BEFORE IT HAPPENS!**  
Please include my name on your mailing list and send me of all forthcoming M.P.A.A. events.

If you are interested in any particular area of activity please tick the appropriate box (no more than 4 please)

701 Literature  
 702 Exhibitions  
 703 Contemporary Dance  
 704 Drama

706 Classical Music  
 708 Jazz  
 709 Mime  
 710 Early Music

Other (Please state).....  
The information on this form will be held on our computerised mailing list and used only for mailing arts information to you.

# Playscheme Specials



## WIND IN THE WILLOWS

by Pendle Productions  
Monday 28 July - Friday 1 August  
Within organised playschemes Pendle Productions will bring to life the wonderful animal characters from Kenneth Graham's much loved book. Audiences will be invited to play the parts of weasels, stoats and jury members - and to join in the songs as they follow the trials and tribulations of Mole, Ratty, Toad and Badger. All performances take place in the mornings and are followed by afternoon workshops in animal characterisation and movement. Performances 10.30 a.m. Workshops 2.00 p.m.

Monday 28 July	STUBBYLEE PARK, BACUP (Leisure Hall, if wet)
Tuesday 29 July	HASLINGDEN SPORTS CENTRE (Indoors if wet)
Wednesday 30 July	BURNLEY YOUTH THEATRE SITE (Indoors if wet)
Thursday 31 July	VICTORIA PARK, NELSON (Civic Theatre if wet)
Friday 1 August	ALL WEATHER PITCH, SPORTS CENTRE, COLNE (Municipal Hall if wet)

## MAJOR MUSTARD

Monday 4 - Friday 8 August  
Hyndburn Playscheme Sites  
Look out for Major Mustard's brightly coloured Travelling Show. He will be touring the Hyndburn area, visiting Playschemes to entertain and delight children with his colour ful, action-packed magical puppet-shows!

ACKNOWLEDGEMENTS  
Mid-Pennine Arts Association gratefully acknowledges the financial assistance of The Borough Councils of Burnley, Hyndburn, Pendle and Rossendale, the Town Council of Todmorden, North West Arts, Yorkshire Arts Association and Lancashire County Council.

## CAT ISLAND

A street band combining English Folk Music with African, Latin and Creole music - but that's just the beginning! Their performances, described as a complete theatrical experience can include dance, fire-eating, mumming plays and - most spectacular of all - 12 foot puppets! You can't miss them!

- Sunday 25 May BACUP FOOTBALL CLUB SUMMER GALA  
West View, Cowfoot Lane, Bacup
- Monday 26 May GREAT HARWOOD SHOW  
Wood Street Show Ground, Great Harwood
- Saturday 1 June BURNLEY BOYS CLUB GALA  
Barden Sports Field, Burnley
- Saturday 23 August ST. PETER'S CHURCH GALA  
St. Peter's School, Walsden, Todmorden



A wonderful mix of medieval mummery and bang up to date street entertainment! Different nationalities and theatrical backgrounds give added variety to an extensive combination of entertainment skills - music, clowning, acrobatics, juggling, 'jiggery pokery', and whirl of Flamenco and a touch of mystery! Music, colour, movement and lots of laughs!

- Sunday 22 June ST. VERONICA'S GARDEN PARTY  
St. Veronica's Church, Helmshore
- Saturday 12 and Sunday 13 July ROSSENDALE COUNTRY FAIR  
Haslingden Sports Centre
- Sunday 22 July BURNLEY AGRICULTURAL SHOW  
Towneley Park, Burnley
- Sunday 10 August CLIVIGER SPORTS GALA  
Mount Lane Sports Field

## THE FABULOUS Salami Brothers

During the winter season the Fabulous Salamis have entertained and delighted hundreds of people in the MPAA area, touring schools and community venues. During the summer they will be out and about performing their feats of **SKILL, STRENGTH and STUPIDITY** at the following events.

- Sunday 18 May EARBY MAY DAY  
Springfield Playing Field, Earby
- Saturday 24 May TODMORDEN CARNIVAL  
Centre Vale Park, Todmorden



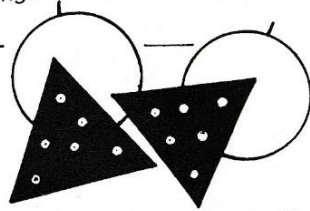
# GALLERY

Mid-Pennine Arts Association, 2 Hamerton Street, Burnley, Tel: 21986

OPEN: 9-5 MONDAY to FRIDAY Admission Free

## JEWELLERY

Bold bright, inexpensive – the very latest ideas in jewellery for the young at heart. A new display every month. Keep calling in! For a special present or to treat yourself there's sure to be something just right for you!

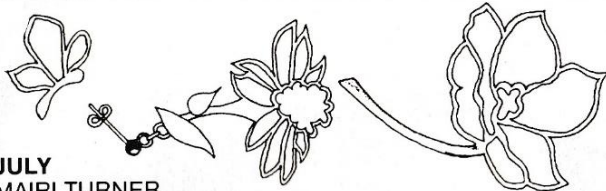


**MAY**  
BRIDGET WHEATLEY

Simple – geometric shapes in textured silver. Large bold geometric shapes in ebony, slate or black resin inlaid with silver – or black and grey resin. Big chunky beads on vinyl tubing.

**JUNE**  
JEANI WILLETT

Drop, stud and cone earrings in brightly coloured clear resin. Copper earrings in light and dark colour combinations with silver fittings. New design, resin earrings encasing sugar shapes!



**JULY**  
MAIRI TURNER

Wire doodles – wiggles and squiggles of wire sometimes combined with clay beads. Dangle earrings and necklaces. Small neat geometric stud earrings in perspex and paper. More figurative styles in silver and enamels – lilies, irises, tulips, sea-asters.

**AUGUST**  
CAROLYN HIRD

Drop and stud earrings with matching bow ties. High-fired porcelain, subtly coloured slips, sometimes with a transparent glaze. Some pieces also incorporate hand-worked silver.

## EXHIBITIONS

May 1 – 30  
**CARTOONS** by  
**NICHOLAS NEWMAN**

A collection of Nicholas Newman's pithy and highly perceptive contributions to Private Eye, Punch, Drama, Mail on Sunday and TV's Spitting Image. Need one say more?



June 2 – 14  
**WOMEN'S WRITING**  
For details of this exhibition see A WOMAN'S PLACE overleaf.



June 2 – 27  
**TERRARIA** by **DAVID YOUNG**

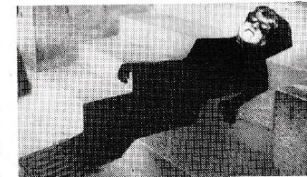
Intricate and exotic shapes filled with a profusion of plants by David Young of Edinburgh.

July 2 – 31 **Artistic Licence**

An open exhibition which promises to be full of surprises! Artists and craftspeople with a Lancashire connection.

August 4 – 29  
**PHOTOGRAPHS**  
by **PETER SINGLETON**

Exciting new work by this young Burnley photographer.



SEPTEMBER  
Monday 1 – Tuesday 30  
**ANIMAL MAGIC** sculpture exhibition

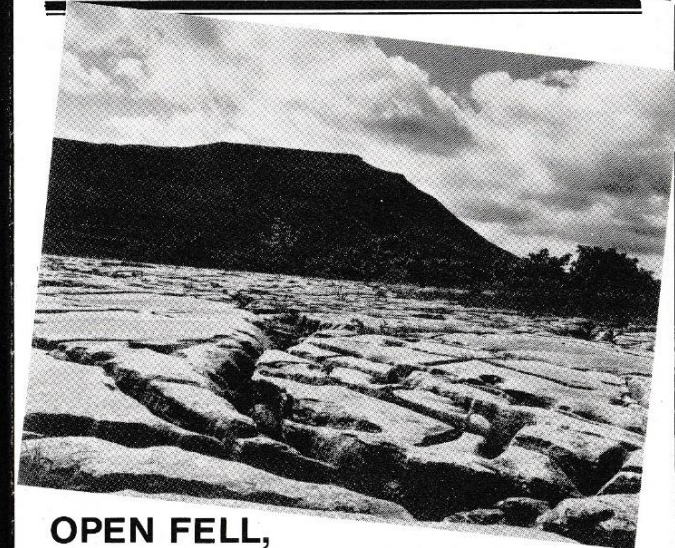
OCTOBER  
Wednesday 1 – Thursday 31  
**WARM AND WOVEN** textile exhibition

## Other Exhibitions

### M65 COUNTRY

A photographic study of the motorway in Lancashire and its effects on travel, transport and human lives. High quality work by permanent staff, visiting lecturers and some students from the Photography Department of Nelson and Colne College.

May 19 – June 2 Colne Leisure Centre  
June 6 – 29 Haworth Art Gallery, Accrington  
July 1 – 31 Central Library, Rawtenstall  
August 2 – 31 Pendle Heritage Centre, Barrowford



### OPEN FELL, HIDDEN DALE

A pictorial record of Dales' life – above and below ground, by John and Eliza Forder of Dent. Familiar signs and unusual images combine to present a unique and affectionate look at the scenery and people of the Yorkshire Dales.

August 5 – 30 Public Library, Haslingden  
September 1 – 30 Pendle Heritage Centre, Barrowford  
October 3 – 26 Haworth Art Gallery, Accrington  
November 3 – 15 Calder College, Todmorden

### TOURING DRAGON

Look out for the 27 foot dragon with multi-coloured spots. This is the dragon painted by Jan Pienkowski and some young helpers at the Children's Book Festival. It will be touring schools in the MPAA area during the summer term.



## MAJOR MUSTARD

From his collection of hundreds of puppets, Major Mustard selects the characters for any one of a dozen shows to delight audiences of all ages. Out of humble materials like plastic bottles and tennis balls are created figures with distinct personalities who bring to life stories old and new—with excitement, magic, lots of action and lots of fun! Look out for Major Mustard's Travelling Show in his multi-coloured van.

Sunday 3 August      PENDLE HIPPODROME GALA  
Holt House Playing Fields, Colne  
Saturday 9 August      BARNOLDSWICK GALA  
Victory Park

## The Marini Trombone Ensemble

All the flair and virtuosity of brilliant trombone playing is multiplied by four in this outstanding ensemble. Formed to exploit the trombone as a chamber instrument their flexibility and very personal approach have gained them widespread recognition. An informal outdoor performance is likely to include Bach, Bacharach, Telemann and Joplin!

Sunday 13 July      ROSSENDALE COUNTRY FAIR  
Sports Centre, Haslingden  
Monday 25 July      TOLL HOUSE MUSEUM  
OPEN DAY  
Toll House, Manchester Rd. Burnley

## HAPPENSTANCE THEATRE COMPANY

A new May Day show for 1986, based on the 18th Century tradition of milkmaids parading the streets with garlands of silverware and greenery, accompanied by chimney sweeps, a fool and a fiddler. A mix of stunning images, music, performances and puppets!

Saturday 3 May      HASLINGDEN FUN DAY  
Morning      Haslingden Town Centre  
Afternoon      Haslingden Sports Centre

## PEADAR LONG

Peadar Long is a strolling player and entertainer. He will be delighting audiences of all ages this summer. Look out for him at Nelson Show.

Monday 5 May      NELSON SHOW  
Swinden Playing Fields, Nelson

## SAVANNAH SYNCOPATORS

Hot Jazz Music of the 20's and 30's. A band formed to recreate the music of Ellington, King Oliver, Fletcher Henderson and their like, and now including works by the Coon-Sanders Night Hawks, Fred Rich and the Fess Williams Royal Flush Orchestra, as well as some of the best British bands. Ten musicians, 200 numbers in their repertoire — magic lyrics, dance rhythms, nostalgia, irresistible!

Saturday 3 May

Afternoon

Evening

## BURNLEY BOYS BRIGADE

CARNIVAL  
Sycamore Avenue Playing Fields  
Off Gannow Lane, Burnley  
HASLINGDEN FUN DAY  
Haslingden Sports Centre

## The Satellites

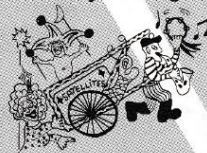
A small itinerant company who bring along a most unusual brand of entertainment. Their wondrous 'Snail Push Cart' is loaded with fun and surprises and from it pour forth music, magc, songs and stories. Look out for the magical cart in the shape of a snail!

Saturday 28 June

Saturday 17 August

## ROSSENDALE CARNIVAL

Stubbylee Park, Bacup  
RISHTON FUN DAY  
Cut Wood Park, Rishton  
and also at  
BELTHORN VILLAGE SCHOOL



entertainments  
outdoors

# Special Activities

## HYNDBURN YOUTH THEATRE PROJECT

Monday 28 July — Saturday 16 August  
Moorhead High School, Accrington

Three weeks of drama workshops for 11–15 year olds, led by Mick Dawson of Burnley Youth Theatre. A great opportunity to learn all sorts of theatre skills, to put together a show from scratch, and to take part in the glorious grand finale, devised entirely by the group. Don't be bored this summer!

Cost £7.50

Registration forms available through MPAA or Moorhead High School.

## Bonsai!

Accrington Town Hall

Saturday 14 June 10 a.m.–4 p.m.

Bonsai is the ancient oriental art of miniaturising trees. The Society will display over 200 trees, some of them 50 years old. Members will explain how bonsai can be a fascinating and inexpensive hobby, using local nursery stock. Starter packs will be on sale, and advice, in abundance will be given free.

Nominal admission charge. All welcome.

In association with Accrington and District Bonsai Society.

## Asian Women's Day

Monday 28 April

Accrington and Rossendale College

A day of activities specially designed for Asian women by Parvinder Sohal.

## ARTS RESIDENCY

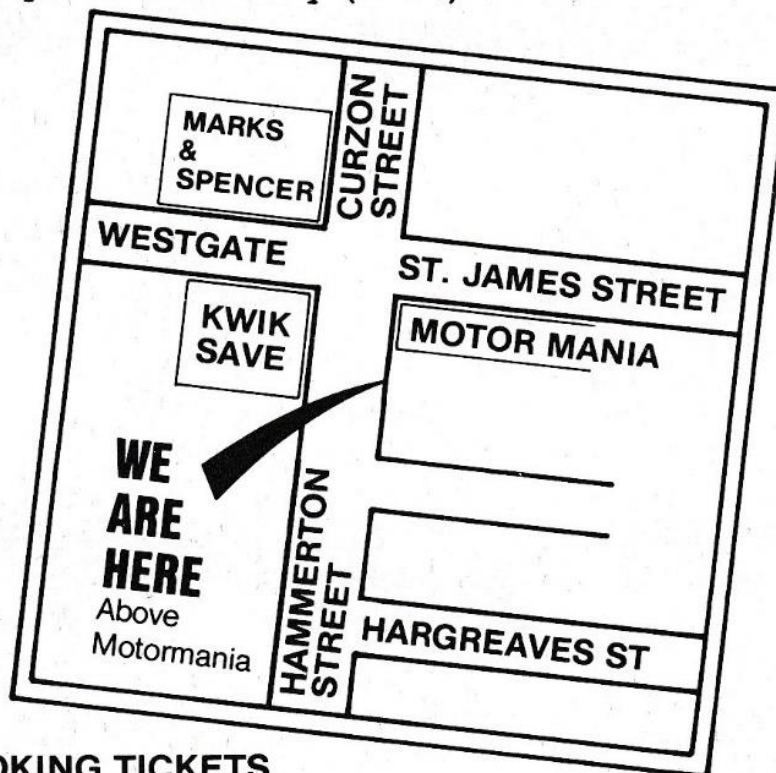
Monday 12 — Friday 16 May

Accrington and Rossendale College

APPEAL PRODUCTS, a Leeds based theatre company will work with theatre students from the College. The week of workshops will lead to the presentation of a performance devised by the group.

# MID-PENNINE ARTS ASSOCIATION

2 Hammerton Street, Burnley, Lancs BB11 1NA  
Telephone: Burnley (0282) 21986



## BOOKING TICKETS

You can book through us for many major theatres in the North West. Call in at our offices to book for:

<b>MANCHESTER</b> —	Palace Theatre, Opera House, Royal Exchange, Library Theatre, Wythenshawe Forum, Halle Orchestra, Free Trade Hall.
<b>LEEDS</b> —	Grand Theatre
<b>LIVERPOOL</b> —	Empire Theatre
<b>BLACKPOOL</b> —	Grand Theatre
<b>OLDHAM</b> —	Coliseum
<b>BOLTON</b> —	Octagon
<b>BLACKBURN</b> —	King George's Hall

You can buy tickets from us for any local events promoted by:-

**BURNLEY BOROUGH COUNCIL**

**BURNLEY MUNICIPAL CHOIR & ORCHESTRA**

**PENDLE LEISURE SERVICES**

**BURNLEY YOUTH THEATRE**