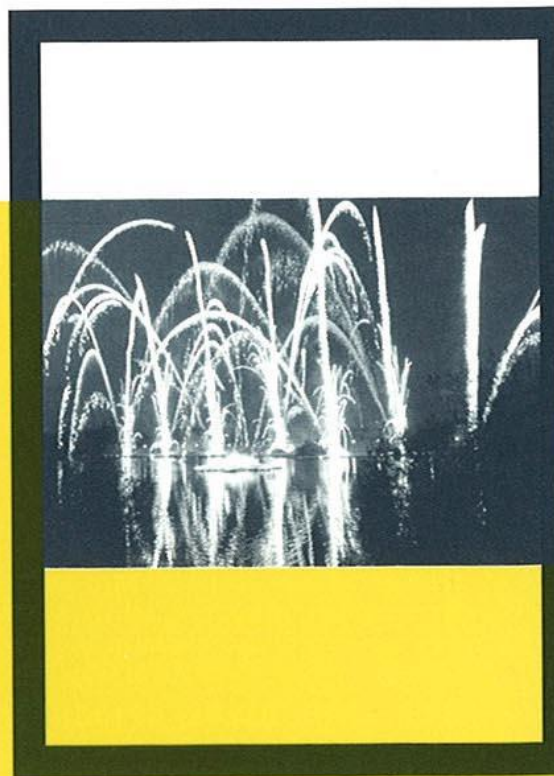




2000

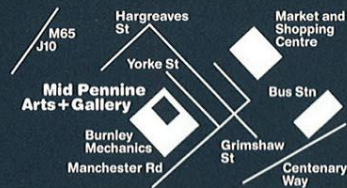
Mid Pennine Arts



events
programme
january to april

Contents

Celebrating 2000
Project oneOne
Haslingden Community Play / Poetry
MPA + Education
Community Projects
Upbeat!
Camerata in Colne
Orchestras & Opera
Theatre at the Studio
Theatre & Performance
Mid Pennine Gallery / Exhibitions Elsewhere
Calendar



TICKETS - IT'S SO EASY TO BOOK

IN PERSON: Call in at the **Mid Pennine Gallery, Yorke Street, Burnley**. Open Monday to Saturday 10.00am-5.00pm, Tuesday open 10.00am-1.00pm (or buy your tickets in your area - see under BUY YOUR TICKETS LOCALLY).

BY PHONE: (01282) 421986 BY FAX: (01282) 429513
Phone to buy tickets for our events and pay for them by credit card. All Access, Eurocard, Mastercard and Visa cards are accepted.

RESERVE TICKETS: You can reserve tickets. Reservations will be held for three days.

BY POST: Write to us (NO STAMP REQUIRED) at FREEPOST BU 874, Burnley, Lancashire BB11 1BR. Please make cheques payable to MPA and enclose an S.A.E.

CONCESSIONS: Concessionary rates are available to our MEMBERS, those in full time education, unemployed people, senior citizens and registered disabled people.

GROUP BOOKINGS: Buy ten, get the eleventh free. For larger parties contact Kary in the Marketing Department to discuss rates.

BUY YOUR TICKETS LOCALLY

MPA TICKETS ARE AVAILABLE FROM:

Accrington	The Information Shop, 3 Abbey Street Hyndburn Leisure, Town Hall
Bacup	Public Library, St. James Square
Barnoldswick	Tourist Information, Fearnlea Avenue
Clitheroe	Tourist Information Centre, Church Walk
Colne	Pendle Leisure Services, Bank House, 61 Albert Road
Haslingden	Public Library, Deardengate
Hebden Bridge	Tourist Information Centre, 1 Bridgegate
Nelson	Tourist Information Centre, Town Hall Pendle Wavelengths, Leeds Road
Rawtenstall	Central Library, Queens Square Tourist Information Centre, 41-46 Kay Street
Todmorden	Bear Wholefoods, 29 Rochdale Road Tourist Information Centre, 15 Burnley Road

MPA MEMBERS

The Director and staff at Mid Pennine Arts wish to thank members old and new for your invaluable support. To show our appreciation we have some very attractive ticket offers available only to you the member. We hope you will want to take advantage of these and to spread the word to friends and relatives about the major benefits to be gained from membership of the association.



Look out for the special symbol to benefit from these great offers.

BECOME A MEMBER

Becoming a member of MPA is easy and will **SAVE** you **£1.50** at most events and **5%** discount on cash purchases from the Gallery.

Members also get

- The chance to borrow equipment (theatre equipment, children's play inflatables and more)
- Advance information - as a member you get the forthcoming season brochure mailed direct to your home
- Personal invitations to join MPA staff and other members at Gallery openings and other special events
- Members discount for the use of MPA's distribution service 'Promotion Network'.

All this for **£9 (£12 joint)** annual membership. Becoming a member is simple. Just call in and see us during office hours, ring or write to us for a membership form. Send it back with your payment and you become a member immediately.

2000

Celebrating 2000

Mid Pennine Arts
Celebrating 2000

April
throughout 2000

Celebrating 2000

Welcome to the Mid Pennine Arts brochure for the spring season of 2000. Mid Pennine Arts would like to wish you a happy, peaceful and creative New Year. As we enter the new millennium we are gearing up for a year of exciting events on the arts scene in East Lancashire. Mid Pennine will be busier than ever before, as we aim to ensure a year to remember. Summer 2000 will bring the Haslingden Community Play, the Hyndburn Mela, outdoor opera, launch of the Waterside Millennium Green and much more... First though, we launch a millennium festival that links four districts, fourteen neighbourhoods, and dozens of partner organisations: Canal 2000.

Canal 2000

Canal 2000 or C2K aims to celebrate East Lancashire's waterway through the arts. The canal, often neglected, has the potential to be a rich resource for recreation and for regenerating local communities. It is a jewel in East Lancashire's crown. Working in partnership with many other local organisations, Mid Pennine will focus upon the canal for a multiplicity of events and activities throughout the coming year.

Canalside communities from Blackburn to Barnoldswick are invited to join the C2K celebrations. We invite you to get involved, to take part in workshops aboard the canal boat 'Kennet' as it tours the waterway, to attend some of the many events taking place, or to help us organise this busy programme. For more information and to receive a regular newsletter to keep you informed please contact us on

01282 421986

or send your name and address to us at Mid Pennine Arts, Freepost, BU874, Burnley BB11 1BR.

School Students Design Sails

Students from a local school will work with artist Chila Kumari Burman during February to design a set of brightly coloured sails, which will adorn the canal boat 'Kennet'. These 'sails' will act as a floating advertisement for the project and will be visible wherever the 'Kennet' cruises during the year 2000.

C2K Launch Weekend

During the Easter weekend a parade of decorated boats will process along the Leeds and Liverpool Canal and 'launch' the project in spectacular fashion as they enter each borough. Walk the Plank, marine theatre contractors, will lead the celebrations, with live music from the Boat Band, traditional food stalls and a finale set piece including fireworks and special effects. You can also make your own unique contribution to the event with a Wish Boat. See under Community Projects. Watch out for the parade of boats throughout the Easter Weekend. Canalside events take place from 6pm to 8pm each evening:

Friday 21 April

Nova Scotia Wharf, Blackburn

Saturday 22 April

Enfield Wharf, Clayton le Moors

Sunday 23 April

Inn on the Wharf, Burnley

Monday 24 April

Foulridge Wharf, Foulridge

Come and join us for this unique celebration. Admission absolutely FREE!

C2K is supported by the Arts Council through the National Lottery, and involves an extensive partnership of East Lancashire organisations.

Project oneOone is East Lancashire's Community Literature Project offering a wide range of word-based activities for readers and writers of all levels and ages. The Project office also acts as a writer's resource centre designed to respond to the why's and wherefore's of the creative writing process. Project oneOone is at 5a Manchester Rd, Haslingden, BB4 5SL. Just walk in or call Martin or Julie on

01706 831260

email: julie@projectoneoone.demon.co.uk

Project oneOone

Haslingden Writers: A friendly group for anyone who writes, or would like to give writing a try. They meet at the Public Hall on Regent Street on the first and third Wednesday of the month at 7.30pm. Forthcoming dates are January 5 & 19, February 2 & 16, March 1 & 15 and April 5 & 19. Haslingden Writers is Free of Charge.

Speak Up! A young people's workshop. Every Saturday 11am - 1pm, Haslingden Library. Everyone between the ages of 7 and 18 is very welcome to come and join us for discussion, writing and performance. It's a chance to speak your mind, gain confidence and have fun. Speak Up! Is Free of Charge.

Womanword: A chance for women to get together to talk and write. The group meets between 5pm and 7pm at the Training for Women office in Pleasant Street, Haslingden. All are welcome. Womanword is Free of Charge.

Live at the Trades: The successful series of performance events featuring well-known poets and writers from the Northwest continues. Live at the Trades also features a popular Open Floor spot where you are invited to take to the floor and read your own work. Last Wednesday of every month at Haslingden Trades Club, on Regent Street, starting at 8pm. Only £2.

Wed 26 January
Wed 23 February

James Quinn
Jo Warburton &
Helen Thomas
John Siddique
Shamshad Khan

Wed 29 March
Wed 26 April

This series is supported by North West Arts Board.



Joe Publish: An exciting new community publishing initiative for all those interested in learning how to edit and produce their own pamphlets. Please contact us for further details.

Heer Ranjha:
20 January 7.30pm
Haslingden Public Hall

As part of the Rossendale Eid celebrations Project oneOone in association with The Rossendale Arts and Cultural Partnership presents the classic Punjabi tale Heer Ranjha. This adaptation for all the family combines puppetry with traditional song, music and English Language narration. Nominal tariff to be confirmed, but supplies are limited.



Haslingden Community Play / Poetry

Haslingden Community Play
Thursday 6 to Sunday 9 July
Community Link, Haslingden

Haslingden's own unique celebration for the millennium will be an original show involving over a hundred local people. Leading NW playwright Kevin Fegan has been working on script ideas with local writers, and the draft script is taking shape.

From January, we will be seeking contributors for every aspect of the show. Not just actors, but set builders, technical help, musicians, stage managers and what have you...

The Haslingden Community Play needs you! If you are not sure how, there will be a variety of taster sessions to help you find out. Contact Julie at the oneOone office for details of these open sessions.

Project oneOone is supported by the Action for Haslingden Partnership and Rossendale Borough Council, and is managed by Mid Pennine Arts.

The Haslingden Community Play is also supported by NWAB through the Regional Arts Lottery Programme, and by North West Playwrights and the Esmee Fairbairn Charitable Trust.

Mid Pennine Arts
ProjectoneOone
Haslingden Community Play / Poetry

January
February
March
April
July

Poetry

Thursday 6 January 8pm
White Hart Hotel, Todmorden
Tickets £2.00

Open Floor Poetry readings with special guest **Bill Dorian**
Make a good start to the Millenium, come along and read your own work.

Thursday 2 March 8pm
White Hart Hotel, Todmorden
Tickets £2.00

Open Floor Poetry Readings with special guest **Helen Clare**
Helen has recently received her MA in creative writing from Lancaster University. A good opportunity to catch this rising poet with a growing reputation.

Presented in association with Pennine Ink Writers Workshops.

equilibrium
 symmetry
 friction
 stretch
 bounce
 erase
 spray
 systematic

Mid Pennine's Full Marks project provides an exciting programme of opportunities for schools to work with professional artists of all kinds. For further details of these or other opportunities, contact Education Officer David Smith on 01282 421986

MPA + Education



Mid Pennine Arts
MPA+Education

January
February
March
April

Four Camerata Workshops will be available for interested schools and colleges on 17 February and 30 March

Camerata is the North-West's leading chamber orchestra. The workshops offer the opportunity for your pupils/students to work with two of the Manchester Camerata players for a morning session. Each session will consist of a 50-minute interactive performance, which introduces the musicians, their instruments and their music to the School, Year Group or class. This is followed by a session in which the musicians work with a single group in which a piece will be created and performed by your pupils.

Cost: £80+vat

Music with the Grand Union Orchestra

Launch: 16 January
Workshops: February
Performance: 4 March

Grand Union is a multicultural band of exceptional calibre, drawing musicians from around the globe. The Grand Union Orchestra will be offering two musicians for 3 two hour workshops with each of two schools: one primary and one secondary leading to an evening show at the Burnley Mechanics with community groups and the Orchestra.



'First Bite' Theatre in Education Company at Haslingden High School on February 29

The Company will be performing its production of "That's Me" for the School. The performance explores issues which affect the mental health and well being of young people.

Design a Web-Site Work with a professional designer to produce a web-site for Mid Pennine Arts

We are looking for a school to host a residency for a professional designer to produce a web-site for Mid Pennine Arts. Dates for the residency are negotiable but costs of both the residency and software will be borne by Mid Pennine.

C2K Artist in Residence at S.S. Fisher-More in Colne: 14 - 18 February

See under Canal 2000

Live Music Now! presents: 'Charade' two concerts for special schools on Thursday 2 March at 10 - 30 am and 1- 30 pm at the Leisure Hall, Bacup

Live Music Now! is a scheme set-up by the late Lord Menuhin to make quality music accessible to everyone. These concerts for Special Schools are deservedly popular, combining a high quality of performance with the musician's ability to communicate and engage their audience. 'Charade' is Kate Luxmore and Ian Buckle on clarinets and piano respectively. Kate and Ian have been performing together since 1989 and have become established as a lively and characterful duo with a wide-ranging repertoire. Please book early to avoid disappointment.

Lempen Puppets Todmorden Schools' Tour

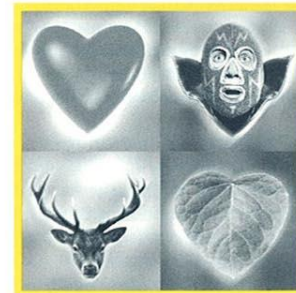
The tour commences on the 6 March, suitable for 5-13 yrs

Lempen Puppets present their new show: 'The Last of the Trolls'. Their shows have been reviewed as "entertaining, thought-provoking and spellbinding," with children "totally enthralled". It is 1930 and the community of Trolls that live deep inside Coalby Mine have dwindled down to only four. Rocky, the youngest and last of them is facing a bleak future alone. Should he leave the mine in search of other trolls? There are many dangers. Not least the fact that Trolls turn to stone in bright light.

'This is a show to delight adults and children alike' Yorkshire Evening Press

The Royal National Theatre presents: 'As You Like It'

This production by the National Theatre's Education Department has been described as "clear, energetic, moving and funny." An introductory demonstration session led by the actors will be followed by an edited performance of the play. Don't miss this chance to see our national company. See under Theatre & Performance.



'At Home with Art'

Monday 3 - Friday 7 April

In association with Accrington & Rossendale College's Art & Media Festival from 3-7 April, Mid Pennine Arts have invited two artists to work with students in producing their own designs as inspired by themes arising from 'At Home with Art'. The artists will also be giving presentations of their work in the Mid Pennine Gallery. For further details call Fiona on

01282 421986

Monster Poems: Poetry Workshops

Six 'Monster Poem' Workshops led by our Education Officer, David Smith, are available for Key Stage 2 pupils during February and March. The half-day sessions consist of two parts. First, a whole class activity leading to a whole class poem followed by a 'choral' presentation of the work. Pupils will then work on individual poems that will be redrafted with the class teacher's help after the visit for publication in a whole class anthology.

Cost: £20+vat

For advice, further details or bookings for any part of the education programme, contact David Smith, Education Officer on

01282 421986

Mid Pennine offers some exciting opportunities to participate in the arts this spring... For information on any of the following, phone Christy Evans on **01282 421986**

Community Projects

**Mid Pennine Arts
Community Projects
Upbeat!
Camerata in Colne**

**January
February
March
May/June & throughout 2000**

Join a Samba Band

Fancy yourself as a red hot Brazilian-style Samba drummer? Well now's your chance to have a try. MPA with Manchester School of Samba will be running a series of workshops to teach this fantastic form of percussion. Participants must be over 16 and will be working towards performing at the enormous Manchester 5000 on the weekend of the 6-7 May 2000, when 5000 drummers from all over the country will come together to jam and party all day. An opportunity not to be missed as classes will cost only a small fee for the whole course. There will be opportunities for the group to get together to play at other events throughout East Lancashire over the summer, if the participants wish to.

Grand Union Orchestra

A chance to work with a genuinely multicultural band. Starting with an exciting introductory concert at Stoneyholme and Daneshouse Community Centre on January 16th, this creative project focuses on the exchange of language, song and musical ideas between the cultures of East and West. Internationally renowned Grand Union will be running school and community workshops, to create an original, classical work to be performed at Burnley Mechanics on Saturday 4th March.

PYPT at Foulridge Wharf

Pendle Young People's Theatre, supported by MPA will be performing a specially commissioned play at the Wharf on June 4th 2000. The play, written by Paul Wilson, from Kelbrook, tells the story of an adventurous young girl who runs away from home and disguises herself as a boy to get a job with the navvies building the tunnel. A promenade show, with some scenes performed on the Marton Emperor, ending in a torch-lit procession and with refreshment from Foulridge Tea Rooms, this promises to be an entertaining evening for all the family. PYPT will be rehearsing from January, and new recruits are welcome. To join phone Roy St. Pierre on **01282 842221**

Sound and Vision

Take part in a video collage. The chance for anyone with a strong connection to the borough of Hyndburn to record their Millennium hopes, fears, aspirations and activities. This project gives participants the opportunity to make videotape of up to twenty minutes footage about themselves, their lives and how the leap into the new century will affect them. Three professional video workers will then edit the material into three separate tapes to be screened as a triptych as part of Sound 2000 festival next summer.



Canal 2000

C2K Banners - made with artist Chila Kumari Burman in November will be on display in Brierfield Youth Centre and at Clayton le Moors Youth and Community Centre in the New Year. Those who took part in creating these beautiful banners to herald MPA's Canal 2000 project will be invited to see the finished pieces. If you did not take part, but would like to see these fabulous designs, pop along to one of our open sessions. Dates to be confirmed.

Easter Launch Weekend - As part of these events, there will be the opportunity to make your own paper wish boat and sail it off into the future, carrying your dreams with it. Anyone who comes to the event can join in this activity free of charge and watch their dreams follow the parade of decorated narrow boats. See under Canal 2000 for event details.

UPBEAT!

These popular family concerts return in the New Year with yet more unusual and eclectic sounds from around the world. Why not come along and learn something about other musical styles and have a go on the many and varied instruments? Something for the young and the not so young!

St Mary's Parish Church, Todmorden

All concerts start at 3pm (doors open 2.30pm)
For adults and children over 1m tall (smaller children free)
Tickets £2.00 in advance, £2.50 on the door
series £5.00 (three for the price of two)

Sunday 23 January TRIPLE HARPERS

If you think you've heard the harp before, then think again. F-Katie Roberts (with Philippa) will fill the church with a richness of sound you've never heard before. Fast and rhythmical she doesn't simply pluck the strings, she hammers them, strums them and drums her fingers on the sound box. Interspersed with fascinating and humorous background stories this promises to be an uplifting occasion for all the family.



Sunday 27 February CASP

...are Chris, Andrew, Sarah and Proful, whose combination of instruments - flute and percussion; guitar; cello and oboe and tabla make a fascinating and exciting ensemble. We are delighted to welcome CASP to St Mary's and promise you an exciting interactive afternoon. We know you will be fascinated by the music from Chris' clay pot! as well as that provided by all the musicians from CASP.

Sunday 26 March ED OXLEY AND JOE CASWELL

Step into a world of "Didjing and drumming" with Ed and Joe, and you will find that there is more to the world of the didjeridoo than Rolf Harris. This didjeridoo and percussion performance is for the whole family with the children having an opportunity to examine the instruments and maybe even play a didjeridoo.

MANCHESTER CAMERATA

Welcome once again to the ever-popular Camerata orchestra as they perform in the delightful setting of Colne's Municipal Hall. All concerts start at 7.30pm but if you can get there early then don't miss the pre-concert talk in the coffee bar at 6.45pm.

Tickets:
Balcony - £9/£8 concessions
Stalls - £8/7 concessions
Under 16's offer: £4.50 per concert
Box Office 01282 661234

Thursday 27 January

Programme:
Berg - Piano Sonata (arranged for orchestra)
Mozart - Concerto for Flute No1 in G
Berg - Lyric Suite
Mozart - Symphony No25 in G minor

Conductor: Sachio Fujioka
Flute: John Barrow

In a programme alternating works by Berg and Mozart, Principal conductor, Sachio Fujioka, presents a contrasting evening of first and second Viennese School classics concluding with Mozart's wonderful 25th symphony, the 'little G minor'.



Orchestras & Opera

MANCHESTER CAMERATA

Thursday 17 February

Programme:

Mozart - Divertimento No1 in D
Shostakovich - Chamber Symphony
Holst - St Paul's Suite
Tchaikovsky - Serenade for Strings

Director: Elizabeth Layton

The eminent violinist Elizabeth Layton directs this diverse concert, which culminates in Tchaikovsky's beautiful Serenade for Strings, and also features Holst's delightful St Paul's Suite.

Thursday 30 March

Programme:

Suk - Serenade for Strings
Britten - Serenade for Tenor, Horn and Strings
Strauss - Metamorphosen

Conductor: Mathew Best
Tenor: Barry Banks
Horn: Timothy Brown

Britten's nostalgic Serenade for Tenor, Horn and Strings, composed for Peter Pears and Dennis Brain, features in tonight's concert, which concludes with Strauss's intense and poignant masterwork.

The Camerata in Colne series is presented by Pendle Leisure Services in partnership with Mid Pennine Arts.



Mid Pennine Arts
Orchestras & Opera
Theatre at the Studio

February
March
April
June

NORTHERN CHAMBER ORCHESTRA
Thursday 9 March 7.30pm

Town Hall, Todmorden
 Tickets: £8/£5 concessions

Programme:

Mozart - Eine Kleine Nachtmusik
Boccherini - Cello Concerto
Tchaikovsky - Serenade for Strings
Borodin - Nocturne

Leader: Nicholas Ward (Violin)
Cello: Alice Neary

The Northern Chamber Orchestra return to Todmorden following their hugely successful visit in October with a programme of chamber music which will appeal to all tastes. The Boccherini Cello Concerto is a rare treat and Tchaikovsky's Serenade for Strings adds to an enchanting programme.

Outdoor Summer Opera Special
OPERA BRAVA
present Puccini's TOSCA

Rose Garden, Haworth Art Gallery,
Manchester Road, Accrington.

Friday 30 June 2000 at 7.30 pm

Tickets: £13.00 Concession £11.00

Celebrate summer and enjoy the thrilling drama of Puccini's TOSCA.

For further information and to reserve tickets contact Janet on

01282 421986

Theatre at the Studio

Accrington & Rossendale College,
Rawtenstall

Tuesday 15 February 7.30pm
Hoipolloi Theatre present
'Living like Victor'

Tickets: £5/£4 concessions
 'Living Like Victor' is a hilarious whodunit. Three actors playing detectives, surrounded by larger-than-life characters are trapped inside a murder case they just can't solve. Full of false moustaches, wigs that fall off and racehorses! Hoipolloi's funniest and most adventurous show to date.



'Ingeniously and deliciously inventive' Independent on Sunday.
'Hysterically comic' Der Tagesspiegel, Berlin

Tuesday 7 March 7.30pm
Rejects Revenge Theatre
Company present
'Whoredom'

Tickets: £5/£4 concessions
 Set in the dank, vile and stinking underbelly of Southwark's Bankside, 1602, Whoredom is a blisteringly funny romp which follows the ambitions of a couple of trollops on a mission. In an absurd tale of love, licentiousness and ill-fitting corsets, Whoredom's harlots hijack history to avoid a cucking, incarceration and the pox in their quest to bash the Bishop's plans. Following the successes of Peasouper and Dusty Fruit, double Fringe First winners Rejects Revenge team up with new company 'dog the monkey' and Terry Titter (Liverpool Comedian of the Year) in this production penned by Echo Arts Award winning playwright, Heather Robson. *'Blackadder for the stage' The Stage.*



Thursday 16 March 7.30pm
Theatre sans Frontieres present
'Les Trois Mousquetaires'
by Alexandra Dumas

Tickets: £5/£4 concessions

Virtue and villainy collide in this rollicking knockabout version of the legendary Dumas tale. Follow the roguishly handsome D'Artagnan and his razor sharp sword - as he fights his way into the deceitful heart of the French Court. Theatre sans Frontieres present this swashbuckling epic with a fiendish new twist for the 21st Century. Handsome, hunky and hairy as they are - LES TROIS MOUSQUETAIRES are all women! Parody, puppetry and cracking comedy combine to make this the all action adventure of the century. Performed by an international cast in French.

Presented in association with Accrington & Rossendale College.

Festival 2000
3rd-7th April 2000
Accrington and Rossendale College

The annual Festival week at the College plans to offer something for all ages and tastes. Lovers of fine music will be entertained by Kathryn Stott on classical piano whilst Neil Smith will also contribute with a performance on classical guitar. A younger audience will be entertained by The Physico Theatre Company whilst the whole family is offered "Saturday Night at the Movies" with the Haslingden and Helmshore Brass Band. The poet Adrian Mitchell presents a poetry evening at the Traders Brasserie whilst other events during the week will include sculpture and design, film review and scriptwriting, percussion and dance workshops. For advanced tickets and further information, contact:

Angela Nuttall on 01254 354220
or e-mail to anuttall@accross.ac.uk

'00

Theatre & Performance

Mid Pennine Arts
Theatre & Performance

January
February
March
April

The MsFits Theatre Company 'Sex & Chocolate!' By Rona Munro

Tuesday 14 March 7.30 pm

Central Library, Accrington

Tickets: £3.50/£2.50 Concessions

A bittersweet comedy about life, love and dairy milk! Jan has just turned 50. She books herself a long weekend and decides to search for the moment of perfect pleasure...! With unexpected results! This is the story of Jan's weekend. An endorphin packed journey guaranteed to make you laugh, cry and give up on that diet! Suitable for 16+ audience.

(Ring Janet on 01282 421986 for information about the workshop which will accompany this performance).

THE BLUES BOAT At the 12th Burnley National Blues Festival

Saturday 22 & Sunday 23 April

Burnley Wharf, Manchester Road, Burnley

The Blues Boat in the guise of the Marton Emperor is back plying the Leeds to Liverpool Canal and will play host to some exciting musicians during the weekend. The trips are very popular and book up quickly. Why not stay a little longer and watch out for some added excitement during Sunday evening when the Burnley Launch of the Canal 2000 Project takes place.

For further information on artists and ticket prices contact Janet on

01282 421986

Grand Union Band: An informal family concert

Sunday 16 January 2pm to 4pm

Stoneyholme and Daneshouse
Community Centre

Admission free

ROYAL NATIONAL THEATRE 'As You Like It' William Shakespeare

Tuesday 25 April
Municipal Hall, Colne

Thursday 27 April
Mechanics Theatre,
Burnley

Saturday 29 April
Public Hall, Haslingden

All performances start at 7.30 pm

Tickets £5.50/£3.50 Concessions/
£2.50 Schoolchildren

Where do you run when everyone's out to get you?
Where can you hide?
Try the Forest of Arden
Where girls become boys,
Boys become men
And fools stay foolish....

This exciting, dynamic and accessible production of "As You Like it" is suitable for all ages. A 40-minute demonstration session introducing the play will be led by the actors; focusing on rehearsal techniques, character and the style of the production. The interval will be followed by an edited performance with full costume and set.



This tour is sponsored by
Lloyds TSB and is financially
supported by Lancashire
County Council Arts.
Presented in partnership
with the Borough Councils of Pendle, Burnley and Rossendale.

Grand Union Orchestra: Now is the Dragon's Hour

Saturday 4 March

Mechanics Theatre, Burnley at 7.30pm

Two chances to catch this superlative, multicultural band of musicians from around the globe.

A joint promotion with Burnley Mechanics.



Mid Pennine Gallery

15 January -
19 February

Boost

With the increasing prevalence for the use of film, video and digital media amongst contemporary artists, 'Boost' presents a view of what is, increasingly, becoming 'alternative': a view of painting.

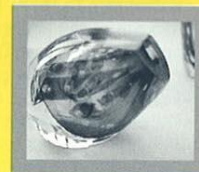
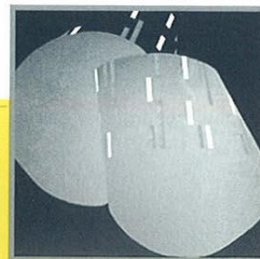
'Boost' selects six painters who graduated in 1999 from universities throughout northern England: Geoff Bretherick, Christopher Marshall, James Forward, Dale Richardson, Ian Gonczarow and Diane McLoughlin.

The exhibition is intended to highlight the diverse ways in which painting continues to offer to artists a source of challenge and evolving opportunities. 'Boost' presents the medium being used in a variety of ways - from the highly controlled 'neo-abstract geometry' of Geoff Bretherick to Diane McLoughlin's liquid experiments with gloss paint; from the object-based work of Christopher Marshall to Dale Richardson's subliminal sensations of landscape.

'Boost' celebrates the talent and originality evident in the work of a new generation of painters and presents an appropriately forward-looking opening to the year 2000.

Also Showing: Glass by Mandy Clapson

A 1999 graduate of the University of Central Lancashire, Mandy Clapson explores the spontaneity of working with liquid glass. Her work includes blown glass eggs, bowls and sculptural vases, in which bold use of colour is rendered an integral part of the design.



Jewellery by Colette Hazelwood and Gillian Blum

These two graduates of Manchester Metropolitan University each offer contrasting approaches to jewellery design.

Colette Hazelwood's jewellery is interested in the ridiculous: 'My jewellery is unconventional, some would say outrageous but I like to think it's wearable absurdity. Drag queen necklaces and hairy bracelets, fishing equipment neckpieces and facial manipulators are amongst the objects I design and make.'

Gillian Blum specialises in materials such as metal, glass and rubber and draws her inspiration from the organic forms, textures and movements found in nature. Whilst not a traditional material to use, rubber gives Blum's designs an aesthetic appeal, great flexibility, comfort and tactility. 'All my jewellery needs is to be framed by the person wearing the pieces, the jewellery then comes alive when worn.'

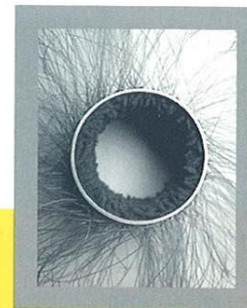
Railway Sleepers: Photographs by Mike Owen

For many, the train provides a capsule of time and space that separates home from work. For a short while, encouraged by the movement of the carriage and the sometimes out-of-control heating, the travellers allow themselves to submit to weariness that often seems close to exhaustion. The Leeds - Manchester transpennine rail link has provided the setting for Mike Owen's intriguing series of anonymous portraits. On show in the Burnley Mechanics foyer area.

SPECIAL EVENTS

Saturday 15 January 12 - 2pm

Exhibition opening with free refreshments and musical abstract compositions by Melanie Storey, inspired by the work on show.





26 February -
8 April

At Home With Art

The choice of objects with which we fill our homes is one of our most personal expressions of taste. Yet often the home is dismissed as representing everything that contemporary art is not: comfortable, reassuring, useful and pleasing.

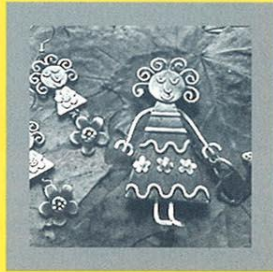
'At Home with Art' aims to challenge this stereotypical view. Nine of Britain's leading sculptors have been commissioned to design multiples which, in conjunction to the exhibition, are to be manufactured and sold at Homebase stores nationally.

The exhibition includes a tuning fork by Angela Bullock, garden tools by Tony Cragg, an aluminum sculpture by Richard Deacon, pegs by Anthony Gormley, a table lamp by Anish Kapoor, a shower curtain by Perminder Kaur, a travel rug by David Mach, plates by Richard Wentworth and a ceramic bowl by Alison Wilding.

'At Home with Art' is a South Bank Centre Touring Exhibition organised in association with Homebase. First shown at the Tate, London, in November 1999, the exhibition was also previewed on BBC2 as part of the 'Close Up' season of documentaries. The Mid Pennine Gallery presents 'At Home with Art's' first showing outside of London: a coup for East Lancashire.

National Touring Exhibitions

Organised by the Hayward Gallery for the Arts Council of England



Also Showing:
Jewellery by Penny Gildea and Sharon McSwiney

Penny Gildea produces an individual range of jewellery and small objects, predominately of silver, sometimes of gold, combining the techniques of engraving and enamelling.

Sharon McSwiney creates humorous figurative jewellery with references to nursery rhyme characters. Work is produced in terracotta finish brass / bronze and blue / green patinated polished silver.

Blueprints

To coincide with 'At Home With Art', a collection of images from Manchester Metropolitan University will be on show in the Burnley Mechanics foyer area. The domestic environment is enhanced and transformed by a new breed of consumer products that challenge our perceptions of the role of the appliance in the home and our relationship to them. In this selection of work from students of the University's MA Industrial Design and BA(Hons) Three Dimensional courses, the appliance is revitalised. The Pink Pig, a leather vacuum cleaner that enjoys housework, is just one of the treats in store.

Mid Pennine Gallery



2000

Mid PennineArts
Mid Pennine Gallery
Exhibitions Elsewhere

January
February
March
April
May/June

22 April - 3 June

At a Distance: New Work by Sarah Carne and Paul Rooney

'At a Distance' presents exciting new work by the artists, Sarah Carne and Paul Rooney, developed in response to the Burnley Blues Festival.

Paul Rooney is an internationally acclaimed artist and musician. Both in music and the visual arts, Rooney's work seeks to transform the mundane and, in attempting to make something communicable of day to day existence, he creates something skewed, enigmatic and 'other' than the commonplace. Inspired by the honesty of blues music in describing real conditions and emotional states, Rooney has produced, for 'At a Distance', a series of spoken texts that explore the minutiae of everyday domestic boredom. Yet, through the juxtaposition of these texts with projected imagery, are evoked a sense of both detachment and defiance. A MOMA gallery attendant singing karaoke is a sight typical of Rooney's off-centre world-view.

Sarah Carne, the Manchester-based photographer, has chosen to investigate the intellectual and emotional interrelationship of sight and hearing, in music as in other aspects of life. From interviews with visually impaired people living in Burnley, Carne has evolved work that explores their relationships with the written word. For many with visual impairment, there is an enforced intimacy created by a dependence upon others to read their correspondence. Beyond the realms of personal mail, there is a world of public information that remains out of reach, unavailable in large print or audiotape.

Using sound and slide projection, Carne explores the tension that exists in being cut off from public and private information. Fascinated by the Dewey Decimal System and the individually embossed labels by which it is enforced, Carne presents these labels

en masse as an indication of the sum of information withheld from a person with visual impairment.

'At a Distance' is to be the first collaborative exhibition of these two innovative artists and a fascinating interpretation of ideas invoked by Blues music through contemporary visual art.

Also Showing:
Photography by Max Farrar

Max Farrar's passion for jazz, blues and literature is captured in a series of stunning photographs of performances by some of the greatest contemporary artists. On show in the Burnley Mechanics foyer area in celebration of the Burnley Blues Festival.



SPECIAL EVENTS

Friday 21 April
6.00 - 7.30pm

The joint launch of 'At a Distance' and the Burnley Blues Festival. Refreshments provided; all welcome.

Exhibitions Elsewhere

February - March

Debate of the Age: Eastern Ties

This special exhibition brings together a range of items collated from Lancashire's Asian communities that reflect the changing character of wedding fashions over the past fifty years.

The exhibition will comprise actual examples of wedding clothes and jewellery together with material describing the real wedding days of the people who wore the clothing.

'Eastern Ties' will tour to a range of venues across Lancashire and is launched at Daneshouse Community Centre in Burnley from 21 to 28 February. For further details, call Fiona on

01282 421986

Eastern Ties is organised for Debate of the Age by Age Concern and local community organisations with support from Mid Pennine Arts.

Mid Pennine Arts
Yorke Street, Burnley
Lancashire BB11 1HD
Telephone: 01282 421986
Email: midpen@midpenninearts.demon.co.uk

Calendar January/April 2000

**Exhibitions -
Mid Pennine Gallery
Burnley**

15 Jan-19 Feb
26 Feb-8 April
22 April-3 June

Boost
At Home With Art
At A Distance

Calendar

January

Thursday 6
Sunday 16
Thursday 20
Sunday 23
Wednesday 26
Thursday 27

Poetry: Bill Dorian
Grand Union Band
Heer Ranjha
Upbeat! with Triple Harpers
Live at the Trades
Camerata

Todmorden
Burnley
Haslingden
Todmorden
Haslingden
Colne

February

Tuesday 15
Thursday 17
Wednesday 23
Sunday 27

HoiPolloi Theatre: Living Like Victor
Camerata
Live at the Trades
Upbeat! with CASP

Rawtenstall
Colne
Haslingden
Todmorden

March

Thursday 2
Saturday 4
Tuesday 7
Thursday 9
Tuesday 14
Thursday 16
Sunday 26
Wednesday 29
Thursday 30

Poetry: Helen Clare
Grand Union Orchestra
Rejects Revenge: Whoredom
Northern Chamber Orchestra
MsFits: Sex & Chocolate
Theatre Sans Frontieres: 3 Mousquetaires
Upbeat! with Oxley & Caswell
Live at the Trades
Camerata

Todmorden
Burnley
Rawtenstall
Todmorden
Accrington
Rawtenstall
Todmorden
Haslingden
Colne

April

Friday 21
Friday 21
Saturday 22
Saturday 22
Sunday 23
Sunday 23
Monday 24
Tuesday 25
Wednesday 26
Thursday 27
Saturday 29

Canal 2000 Launch
Blues Festival Launch
Canal 2000 Launch
The Blues Boat
Canal 2000 Launch
The Blues Boat
Canal 2000 Launch
Royal National Theatre: As You Like It
Live at the Trades
Royal National Theatre: As You Like It
Royal National Theatre: As You Like It

Blackburn
Burnley
Clayton
Burnley
Burnley
Burnley
Foulridge
Colne
Haslingden
Burnley
Haslingden

Booking Now

Friday 30 June Opera Brava: Tosca

Haworth Art Gallery



Yorkshire Arts

Mid Pennine Arts gratefully acknowledges the financial assistance of the Borough Councils of Burnley, Hyndburn, Pendle and Rossendale, the Town Council of Todmorden, North West Arts Board, Yorkshire Arts and Lancashire County Council.

The work of Mid Pennine Arts is supported by the Corporate Membership of Co-operative Retail Services Ltd. and by the Membership of 57 non-profit making local organisations.

The information in this brochure is correct at the time of going to press but MPA reserves the right to cancel or amend the programme due to unforeseen circumstances.