



september to  
december



events programme

**2000**



# Contents

2000 Candles  
Music & Performance  
Mid Pennine Gallery  
Exhibitions Elsewhere  
Project oneOone  
Poetry & Prose  
Camerata Season  
MPA+ Education  
Community Projects  
MPA News  
Calendar



## TICKETS - IT'S SO EASY TO BOOK

**IN PERSON:** Call in at the **Mid Pennine Gallery, Yorke Street, Burnley**. Open Monday to Saturday 10.00am-5.00pm, Tuesday open 10.00am-1.00pm (or buy your tickets in your area - see under **BUY YOUR TICKETS LOCALLY**).

**BY PHONE: (01282) 421986** BY FAX: (01282) 429513  
Phone to buy tickets for our events and pay for them by credit card. All Access, Eurocard, Mastercard and Visa cards are accepted.

**RESERVE TICKETS:** You can reserve tickets. Reservations will be held for three days.

**BY POST:** Write to us (NO STAMP REQUIRED) at FREEPOST BU 874, Burnley, Lancashire BB11 1BR. Please make cheques payable to MPA and enclose an S.A.E.

**CONCESSIONS:** Concessionary rates are available to our MEMBERS, those in full time education, unemployed people, senior citizens and registered disabled people.

**GROUP BOOKINGS:** Buy ten, get the eleventh free. For larger parties contact Alex in the Marketing Department to discuss rates.

## BUY YOUR TICKETS LOCALLY

### MPA TICKETS ARE AVAILABLE FROM:

Accrington	The Information Shop, 3 Abbey Street Hyndburn Leisure, Town Hall
Bacup	Public Library, St. James Square
Barnoldswick	Tourist Information, Fearnlea Avenue
Clitheroe	Tourist Information Centre, Church Walk
Colne	Pendle Leisure Services, Bank House, 61 Albert Road
Haslingden	Public Library, Deardengate
Hebden Bridge	Tourist Information Centre, 1 Bridgegate
Nelson	Tourist Information Centre, Town Hall Pendle Wavelengths, Leeds Road
Rawtenstall	Central Library, Queens Square Tourist Information Centre, 41-45 Kay Street
Todmorden	Bear Wholefoods, 29 Rochdale Road Tourist Information Centre, 15 Burnley Road

## MPA MEMBERS

The Director and staff at Mid Pennine Arts wish to thank members old and new for your invaluable support. To show our appreciation we have some very attractive ticket offers available only to you the member. We hope you will want to take advantage of these and to spread the word to friends and relatives about the major benefits to be gained from membership of the association.



Look out for the special symbol to benefit from these great offers.

## BECOME A MEMBER

Becoming a member of MPA is easy and will **SAVE** you **£1.50** at most events and **10%** discount on cash purchases from the Gallery.

Members also get

- The chance to borrow equipment (theatre equipment, children's play inflatables and more)
- Advance information - as a member you get the forthcoming season brochure mailed direct to your home
- Personal invitations to join MPA staff and other members at Gallery openings and other special events
- Members discount for the use of MPA's distribution service 'Promotion Network'.

All this for **£9 (£12 joint)** annual membership. Becoming a member is simple. Just call in and see us during office hours, ring or write to us for a membership form. Send it back with your payment and you become a member immediately.

# 2000 Candles

Mid Pennine Arts  
2000 Candles

September



**Saturday  
23rd September  
Leeds & Liverpool Canal at  
Burnley, Lancashire  
Exhibition preview 5 - 7pm  
Opening speech by celebrity  
guest (tba) at the Canal 6.50pm  
Celebrity lights first candle 7pm**

Canal 2000 (C2K), East Lancashire's unique millennium festival celebrating the 35-mile stretch of the Leeds & Liverpool Canal from Barnoldswick to Blackburn, has been in full swing since Easter with a wide variety of events and activities both on and along the Canal.

Plans are now well in hand for a spectacular end to the celebrations on C2K Finale night, 23rd September, entitled *Two Thousand Candles*. The event will involve hundreds of contributors from schools and local groups, led by artist David Wild, in illuminating a five-mile stretch of the Canal through Burnley centre with thousands of candles. In addition, there will be a lively programme of free canalside entertainment for visitors to enjoy, featuring jazz, folk and classical musicians, a juggler and other entertainers, children's activities and C2K exhibitions both in the Mid Pennine Gallery and on board the Kennet. Refreshments and barbecue food will be on sale during the evening and the event will come to a dramatic conclusion with a boat procession along the Canal and a specially designed firework display.



Fireworks  
by David Clough  
for Strange Cargo Arts,  
photography  
by Bridget Orasinska



*Two Thousand Candles* promises to be a unique and unforgettable climax to C2K. The long-term aim of the project is to help restore the Canal to full and vibrant life for the benefit of local people and visitors.

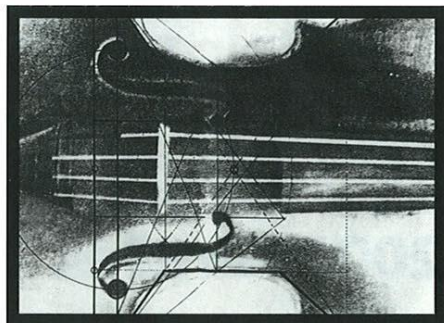
For more information please contact Janet Clunie at Mid Pennine Arts on  
**01282 421986**



Canal 2000 (C2K) is coordinated by Mid Pennine Arts in partnership with an extensive network of East Lancashire organisations. It is financially supported by the National Lottery Millennium Festival Fund through the Arts Council of England, the Baring Foundation, the Ernest Cook Trust, the Esmée Fairbairn Trust, the Garfield Weston Foundation, the Granada Foundation, the Paul Hamlyn Foundation, Lancashire County Council, Lloyds TSB Foundation for England and Wales, North West Arts Board and the Year of the Artist programme.



# '00



## Music & Performance

### Mikron Theatre Company 'Don't Start From Here'

The Albion Hotel, Whalley Road,  
Clayton-le-Moors  
Friday 15th September 8pm

Tickets £5 **m\*** & conc. £4

This musical love story with a transport twist revolves around the efforts of two young people to meet up using various modes of transport.



### Northern Chamber Orchestra

Town Hall, Todmorden  
Sunday 8th October 7.30pm

Tickets £9 **m\*** & conc. £7 students/children £5

The Orchestra is paying two visits to Todmorden this season. Nicholas Ward (violin) will be on hand to lead the Orchestra through a delightful programme of Elgar: Serenade for Strings, Mozart: Violin Concerto No 4, Pitfield: Theme and Variations and Mozart: Symphony No 29. The second concert takes place on Sunday 4th March 2001, when Richard Muncey (viola) will be leading the Orchestra who will perform works by Mozart, Tchaikovsky, Hindemith and Dvorak.

### Kepow Theatre Company Accrington & Rossendale College, Rawtenstall

Wednesday 18th October 7.30pm

Tickets £5 **m\*** & conc. £4

Fresh from their three-week stay at the Gilded Balloon at the Edingburgh Fringe Festival comes Kepow Theatre with their unique performance of The Game of Love - a welcome return from this talented company, whose artistic director is presently teaching at the Royal National Theatre Studio. This is the performance where the audience gets the opportunity to take part in the show!

*Presented IAW Accrington & Rossendale College*

# '00

Mid Pennine Arts  
Music & Performance

September  
October  
November  
December

## Music & Performance

### Live Music Now!

Kintamarni  
Saxophone Quartet  
Civic Theatre, Nelson  
Thursday 23rd  
November 10.30am

A morning concert for special schools. For further details see 'MPA & Education' on page 12.



### The Musicians of Clerkenwell 'Green Grows the Holly'

Towneley Hall, Burnley  
Thursday 7th December 7.30pm

Tickets £7.50 **m\*** & conc. £6

A treat for early music lovers with a programme of Christmas music from the 14th - mid 18th century, played on instruments with a range from medieval to baroque. The music will be both religious and secular, vocal and instrumental with some short readings. Mince pies and mulled wine will be served in the hall.

### Hallé Orchestra Excursion 'Messiah'

Bridgewater Hall, Manchester  
Sunday 3rd December 7.30pm

Tickets £15.50

Leave the car at home - pick up the coach - and visit one of the premiere concert halls in the North West - the Bridgewater Hall, Manchester, to hear one of the best loved choirs in the country sing 'Messiah'. Bound to be a popular visit so early booking is recommended. Closing date for registrations is Tuesday 3rd October. For further information ring Janet on

01282 421986.

### NTC Theatre Company 'The Dawn of the Firefawn'

Civic Theatre, Nelson  
Tuesday 12th December 7pm

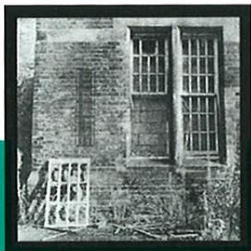
Tickets £3.50 Children £2

A delightful treat for children and families alike. A magical journey deep in the hills of ancient Northumbria, where gold, frankincense and myrrh lie hidden. For details of afternoon performances see MPA & Education on page 13.





# Mid Pennine Gallery



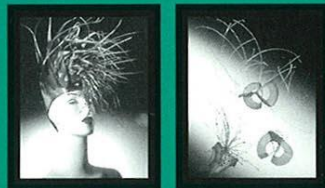
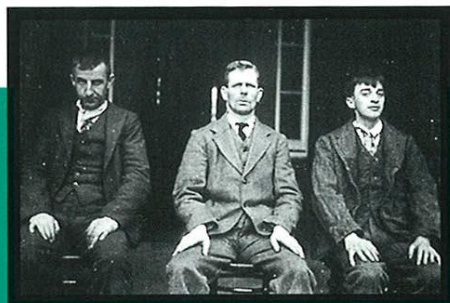
## Shadow Chasers New work by Andrew Sneddon Until 16th September

This powerful and evocative exhibition of work by Andrew Sneddon continues.

'Shadow Chasers' presents a series of photographs, prints and installation work revolving around Middlewood Asylum, a large and now derelict Victorian mental hospital on the outskirts of Sheffield. Through his studies of the asylum, and research into the historic and social implications of Institution, Sneddon invokes, through his work, themes of repetition and systems of order alongside notions of the individual being lost to the multiple.

The exhibition is accompanied by a fully illustrated catalogue with writings by Sharon Kivland and Gordon Hon, available to buy in the Mid Pennine Gallery. If you haven't managed to see the exhibition as yet, catch it now. 'Shadow Chasers' is a major event in the Mid Pennine Gallery's millennium programme of exhibitions: one not to be missed.

*Shadow Chasers has been supported by Sheffield Hallam University.*

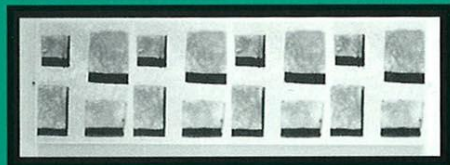


## Also Showing: Jewellery by Sally MacIntyre and Justine Strong

Two nationally acclaimed jewellers present imaginative and theatrical jewellery available for sale in the Mid Pennine Gallery.

## Photography by Amanda Fyfe

This striking series of photographs by Amanda Fyfe creates atmospheres of comfort and discomfort and challenges ideas of personal space. On show in the Burnley Mechanics foyer area.



# Mid Pennine Gallery

# 2000

Mid Pennine Arts  
Mid Pennine Gallery

September  
October



## The Cut Tea 23rd September - 28th October

Tea are a pioneering group of four artists: Peter Hatton, Val Murray, Jon Biddulph and Lynn Pilling, whose work seeks to examine social networks not usually made visible. As part of Mid Pennine Arts C2K celebrations, Tea were invited to produce a new work based upon the entire 35 mile stretch of the Leeds to Liverpool Canal that forms the basis to the wider project. The result is 'The Cut', a major video installation that arrives at the Mid Pennine Gallery following its tour to canal-side venues throughout September (see 'Exhibitions Elsewhere' on page 9).

In the artists' words: 'It appears that despite some efforts to open up and utilise the canal ... society has largely turned its back on [it].'

So, 'The Cut' presents not a portrait of the canal, but looks outwards into the areas through which the canal passes and combines the artists' visual journey with a series of commentaries from people located at houses and businesses close to the waterway. Visitors are invited to take a position on the canal by standing between two massive life-size projections and can listen to the people who live and work canal-side at the end of the millennium.

The exhibition is accompanied by an artist-designed publication, on sale in the Mid Pennine Gallery from 23rd September.

*The Cut has been supported by the National Lottery through the Arts Council of England, the Esmée Fairbairn Charitable Trust, North West Arts Board, British Waterways and the University of Central Lancashire.*

### Special Event

From 5pm to 7pm on Saturday 23rd September, and to lead the C2K Finale, everybody is invited to join the celebrations with a special extended viewing of 'The Cut'. Free admission & refreshments provided.

## Also Showing: Buslife Art on the move



Since June, five of the North West's most innovative visual artists have been prowling the bus routes of East Lancashire, talking to passengers and drivers about everything from daydreams to song lyrics. The work produced in response to these conversations will be seen on key Stagecoach Ribblesdale services operating throughout the area until the end of November. It is brought together for the first time in the Burnley Mechanics foyer area and offers an amusing and stimulating series of artists' responses to the bus environment.

*Buslife is organised in association with Stagecoach Ribblesdale and has been supported by Year of the Artist.*



## Exhibitions Elsewhere

Mid Pennine Arts  
Mid Pennine Gallery  
Exhibitions Elsewhere

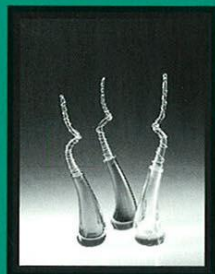
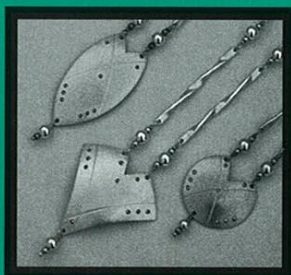
September  
October  
November  
December

### 100% Manmade Christmas Crafts 2000 4th November - 23rd December

This perennially popular event continues to develop. Presenting work from over 60 craftsmakers and designers working throughout the country, '100% Manmade' focuses upon the range of materials and skills deployed in their use in this year 2000. All of the work on show is available for sale and offers unique gifts to all you Christmas shoppers.

#### Special Event

'100% Manmade' opens on Saturday 4th November. Everybody is invited to join us for a glass of wine between 11am and 3pm while doing your Christmas shopping. Special one-day only discounts will be available.



### Buslife Art on the move September - November

This series of exhibitions on the internal advertising spaces of Stagecoach buses by five of the most innovative of artists currently working in the North West continues.

In September, Bashir Makhoul presents photographs of drivers working on Stagecoach Ribble's X43 service between Manchester and Burnley and the places they pass through on the journey. In October, Paul Rooney presents an image composed of song lyrics collated from bus passengers, from tunes going through their heads as they travel.

In November, 'Buslife' concludes with the concurrent exhibition of one work from each of the five artists (also including work by Sarah Carne, Michael Robertson and Julie Chow Ping Fu). These five images will be presented on the rear advertising spaces of selected Stagecoach Ribble buses operating around Burnley and will be shown together in the Burnley Mechanics from 23rd September.

*Buslife is organised in association with Stagecoach Ribble and has been supported by Year of the Artist.*



### The Cut Tea 2nd - 14th September

This major video installation produced by the artists' group 'Tea' forms one of the most high profile and exciting projects to emerge from the C2K celebrations.

The video, based upon a three day journey along the Leeds to Liverpool Canal and the communities through which the canal cuts, is previewed at three venues across East Lancashire before its final showing at the Mid Pennine Gallery between 23rd September and 28th October. You can find 'The Cut' at the following locations and between the specified dates. Opening times at all venues are 11am to 5pm.

**The Crypt, Blackburn Cathedral**  
Saturday 2nd / Monday 4th - Tuesday 5th  
September

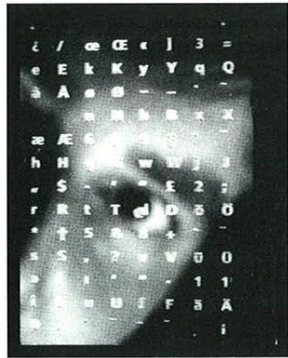
**Oswaldtwistle Town Hall**  
Saturday 9th - Sunday 10th September

**The Barn, Pendle Heritage Centre,  
Barrowford**  
Tuesday 12th - Thursday 14th September

*The Cut has been supported by the National Lottery through the Arts Council of England, the Esmée Fairbairn Charitable Trust, North West Arts Board, British Waterways and the University of Central Lancashire.*



# Project oneOone



Project oneOone is East Lancashire's Community Literature Project offering a wide range of word-based activities for readers and writers of all levels and ages. The project office also acts as a writer's resource centre designed to respond to the why's and wherefore's of the creative writing process. Project oneOone is at 5a Manchester Rd, Haslingden, BB4 5SL. Just walk in or call Martin on **01706 831260** or email [martin@projectoneoone.demon.co.uk](mailto:martin@projectoneoone.demon.co.uk)

## Haslingden Writers

**Public Hall, Regent Street, Haslingden**  
**1st & 3rd Wednesday of the month 7.30pm**  
Free

A friendly group for anyone who writes, or would like to give writing a try.

## Speak Up!

**Haslingden Library**  
**Every Saturday 11am - 1pm**  
Free

A young people's workshop where everyone aged 7 - 18 are very welcome to come and join the group for discussion, writing and performance. It's a chance to speak your mind, gain confidence and have fun.

## Womanword

**Training for Women Office**  
**Pleasant Street, Haslingden**  
**Every Wednesday 11am - 1pm**  
Free

A chance for women to get together to talk and write. All are welcome.

## Live at the Trades

This is currently in hibernation but attempts are desperately being made to seek more funding, and Live at the Trades will hopefully be running again at the earliest opportunity.

## Words

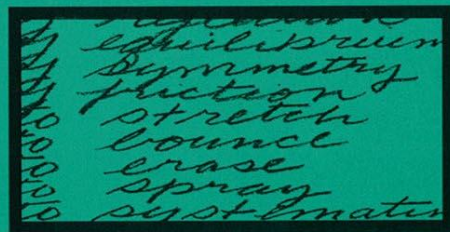
**Mary Hindle Centre, Haslingden**  
**Monday 16th -**  
**Wednesday 18th October 7 - 9pm**  
Free Workshops

As part of Youth Arts 2000, ELATE, in association with Project oneOone, are delighted to present 'Rappit 'n' Rant' - an opportunity to work your words up into an exciting beat-based performance. Join local poet John Carley as he leads this series of workshops for 14 - 25 year olds.



**Haslingden Community Link**  
**Saturday 21st October 2 - 4pm**  
Free Workshops

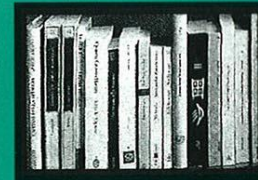
Performance Tickets £1 and 50p for under 18's. Come along to drop-in sessions that will let you explore words with both poetry and rap workshops. Follow that up at 6.30pm with an evening of performance from John Carley and his workshop group as they step it up for drum and synth. Add to the mix 'Poets Ink', a group of young performance poets with attitude and be prepared to have all your perceptions of word based events detonated. To find out more contact Kary on **01282 437840**.



# Poetry & Prose

**Mid Pennine Arts**  
**Project oneOone**  
**Poetry & Prose**

**September**  
**October**  
**November**  
**December**



## Open floor readings

**White Hart Hotel, Todmorden**  
**Thursday 7th September 8pm**  
Tickets £2

Following on from the hugely successful Writing Day with Helen Clare in August, the new season gets underway with an Open Forum and a special guest appearance from Michael Bruce. Michael is a very experienced creative writing teacher whose poetry often comments on urban life.

**White Hart Hotel, Todmorden**  
**Thursday 2nd November 8pm**  
Tickets £2

Tony Langham will be taking the floor, a well known children's poet whose work has been extensively published in anthologies and collections. He has just published his first book of adult poems - 'Apocalypse Soup'. He will be reading from both his old and new collections.

## Writing Day

**White Hart Hotel, Todmorden**  
**Sunday 1st October 11am - 4pm**  
Tickets £12

Led by Rossendale poet John Carley, participants will be given opportunities to write both poetry and prose, to stretch their skills and to develop their critical faculties. Lunch and coffee will be provided (pie and peas or vegetarian alternative available). To book contact Christine Potter on **01706 815004**.

## Do you have a passion for poetry?

British poets John Carley and Helen Clare invite your participation in The Pennine Poetry Works. Supported by the Year of the Artist and Mid Pennine Arts, The Pennine Poetry Works is an open access email forum dedicated to the discussion and criticism of contemporary English language poetry. Intended primarily for peer group review of work-in-progress, the Works also hosts The Studio - its own website, and publishes Worm - a bimonthly free email magazine.

Sign on at [penninepoetryworks-subscribe@listbot.com](mailto:penninepoetryworks-subscribe@listbot.com). Further information from The Pennine Poetry Studio website at <http://www.helenclare.themutual.net/pennine.htm> or from [john@villarana.freeserve.co.uk](mailto:john@villarana.freeserve.co.uk). The Pennine Poetry Works is free of charge. If you like poetry - be there!

## Passing clouds

### Want to have your work published?

You are invited to submit work for an anthology of new writing based in East Lancashire to be published Christmas 2000. Each writer may submit up to 6 pieces of work for consideration, either poetry or prose. Poetry should be no more than 32 lines. Prose, no more than 900 words. Work should be original and previously unpublished. Each successful writer will receive, free of charge, a minimum of 5 copies of the anthology which may be sold on behalf of local literary activities. The closing date is 30th September 2000. Please contact Martin Peacock on

**01706 831260**

for full details. Work should be sent to Big Lamp Community Publishing c/o Project 1-0-1, 5a Manchester Road, Haslingden, Lancs, BB4 5SL.



'00

# Camerata Season



## Manchester Camerata Concerts at Colne Municipal Hall

### Season tickets:

Premier £32 **m\*** Et conc. £28  
Standard £28 **m\*** Et conc. £24

### Individual tickets:

Balcony £10 **m\*** Et conc. £9  
Stalls £9 **m\*** Et conc. £8 children £2

### Thursday 9th November 7.30pm

Three of Manchester Camerata's distinguished performers will be the soloists in this concert, including Leader Richard Howarth. You will hear the brilliance of virtuosic pieces by Handel, Gregson, and Bach is complemented by one of Bartok's lighter works, the 'Divertimento'.

### Thursday 14th December 7.30pm

Andrew Watkinson directs and performs in this evening of classics from the Baroque era which includes Vivaldi's eternally popular Four Seasons and the fifth of Bach's masterful Brandenburg Concertos.



### Thursday 8th February 7.30pm

An evening of timeless classics by some of the world's most renowned composers which opens with Mozart's Eine Kleine Nachtmusik.

### Thursday 29th March 7.30pm

Beethoven's Symphony No. 7 crowns this concert by German masters which also includes Brahms' homage to possibly the greatest exponent of the symphony, Haydn.

Pre-concert talks take place in the coffee bar at 6.45pm.

Tickets available from Pendle Leisure Services on

**01282 661234**

Et Mid Pennine Arts on

**01282 421986.**

*Presented by Pendle Leisure Services, IAW Mid Pennine Arts Et Manchester Camerata.*

**LEISURE**  
in Pendle

MANCHESTER  
**CAMERATA**

'00/'01



Mid Pennine's Full Marks project provides an exciting programme of opportunities for schools to work with professional artists of all kinds. For further details of these or other opportunities, contact Education Officer David Smith on **01282 421986**

# MPA + Education

## Poetry competition for Schools

Mid Pennine will again be running a poetry competition in conjunction with 'Pennine Ink' Magazine for children aged between 7 and 13 years old. Certificates and book tokens will be awarded to the winners who will also have the satisfaction of seeing their winning poems published in the Spring edition of 'Pennine Ink'. Entries should be sent directly to David Smith at the Mid Pennine Office by November 17th.

## Canal Folk Art with Tony Lewery

### September 4 - 8th

Canal Boat artist and historian, Tony Lewery, will spend a week working with pupils from Colne's Gibfield Special School. They will be recreating the traditional Leeds-Liverpool Canal decorations for the canal boat 'The Lancashire Enterprise'.

## Creating Folk with Mary Keith and the Noisy Planet Band

### September 11 - 20th

Folk singer, composer and musician, Mary Keith, will be in residence in Accrington with St. Mary Magdalen's and St. John's Primary Schools. The project will focus on creating new folk songs based on the lives of today's canal people. The residency will end with an evening concert in which the children, supported by 'The Noisy Planet Band', will perform their pieces.

## Writing Poetry in the classroom - a one day course for teachers at Key Stages 2 and 3

### Dunkenhalgh Hotel, Clayton-le-Moors Tuesday October 10th

This one-day course for teachers marks a new venture for Mid Pennine. The course breaks new ground because it will be led by two published, practising poets: Jean Sprackland and Levi Tafari. Places are limited and teachers interested should contact Education Officer, David Smith as soon as possible.

## Two Poets Residence: Levi Tafari and Jean Sprackland November

Both poets have been engaged for 5 days each immediately after the November Half Term Holiday. They are available to spend a full day working in individual schools. It is hoped that each residency will end with an evening of performance poetry presented by the children, hosted by our poets.

## Live Music Now - a concert for Special Schools

### Nelson Civic Theatre

### 23rd November 10.30am

We are again offering a free, morning concert for Special Schools. This year's concert features the 'Kintamari Saxophone Quartet' whose energetic performances have captivated audiences all over the country. Contact Janet Clunie or David Smith at the Mid Pennine Office if you are interested.

## Live Theatre - NTC Theatre Company 'The Dawn of the FireFawn'

### Nelson Civic Theatre

### Tuesday December 12th 2pm

### Public Hall, Haslingden,

### Wednesday 13th December 2pm

### Tickets are £2 for children with accompanying staff free

We are delighted to offer two schools' performances of this professional production, a strange and magical journey for Christmas with a spectacular and thrilling climax. In addition there is a 7pm. public performance on the Tuesday evening at the Nelson Civic Theatre. Contact David Smith or Janet Clunie at the Mid Pennine Office for tickets and further details.



*The Full Marks education project is supported by The National Lottery through the Arts Council of England.*



# '00

**Mid Pennine Arts  
Community Projects**  
September/December

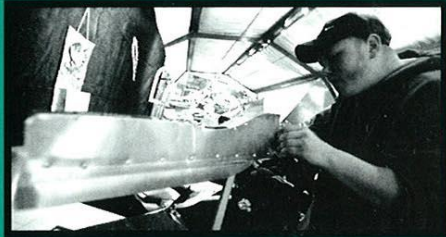
## Community Projects

### Sound and Vision 2000

This fabulous video produced by editing original material from 50 participants in the Hyndburn area had its first showing in August. To give even more people the opportunity to view this wonder it will be screened as part of the Heritage fair in Accrington and over the Christmas shopping period in the town centre. Watch this space for more details.

### C2K Touring Exhibition

Wonderful works of art including metal sculpture, shadow puppets and traditional rag-rugging will be displayed as part of the C2K touring exhibition. People attending workshops created the work, as part of the C2K project. It certainly shows what a wealth of talent there is in East Lancashire!



### Workshops

Do you work with a group, meeting regularly? Are you interested in workshops in: drama, arts, crafts? Would you like to discover some new ideas that you can adapt and use again? Christy Evans is a trained teacher with skills in many art/performance disciplines. She is available to lead workshops for groups of people, any age, which are not in the mainstream education system. For more details on this, or any other information on this page, please call Christy Evans on **01282 421986.**

### Brierfield Arts & Cultural Project

In partnership with Groundwork East Lancs, Mid-Pennine Arts have appointed Marie Davies as Arts and Cultural Officer for Brierfield. This new initiative for the Pendle area aims to build a programme of community and environmental arts work on a neighbourhood basis.

Currently operating from the Mid Pennine Offices at Yorke Street, Burnley, Marie will soon be working from a base in Brierfield alongside Community and Economic Development Workers and project workers from Groundwork East Lancs. The whole team aim to address the creative needs of the local community, particularly the ethnic minority section, working towards a better future for the Brierfield area and surrounding neighbourhoods.



This project is now well under way with events being organised well into next year. Successful events over the summer period included the Brierfield Festival Fun Day and the Nelson Mela. Other events will be taking place throughout the Autumn including the creation of a Brierfield Youth Theatre and the building of a Millennium Peace Garden in the centre of Brierfield.

If you require further information about any of these events or are interested in arts events for a group please contact Marie Davies, Arts and Cultural Officer for Brierfield on

**01282 421986 or  
07884 187655.**

# MPA News

## Celebrating 2000

This year Mid Pennine Arts is marking the Millennium with an exciting range of special events:

- The *Canal 2000* festival, climaxing with the 2000 Candles finale and *The Cut* video experience
- The *Haslingden Community Play* that culminated in July
- Outdoor performances of opera and theatre
- Melas* with Asian communities in Hyndburn and Nelson
- Buslife* putting the work of five North West artists on East Lancashire bus routes
- A video collage of Accrington people's Millennium experiences in *Sound & Vision*
- Supporting residencies for the *Year of the Artist*

These are just a few of the highlights of our busiest ever year.

## The MPA Team

If you would like to find out more about these projects or any of Mid Pennine's work, please contact any of our team:

Christy Evans	Community Arts
Janet Clunie	Performing Arts
Fiona Venables	Visual Arts
David Smith	Education
Martin Peacock	Literature Project
Marie Davies	Brierfield Arts & Cultural Project
Julian Pearce	Mid Pennine Gallery
Alexis McLean	Marketing
June Alyson Crossley	Administration
Nick Hunt	Director

## Into 2001

Mid Pennine will be developing an ambitious range of work including:

- The *C2K* touring exhibition
- A continuing *Canal Partnership* to help revitalise East Lancashire's waterway
- Community involvement and public art towards the creation of East Lancashire's *Regional Park*
- Community arts work contributing to neighbourhood renewal: *The Brierfield Arts & Cultural Project*
- Bringing artists and schools together through our expanding *Full Marks* education programme
- A big new programme of participatory work and training opportunities through the *East Lancashire Asian-Arts Forum*
- Bringing the best artists and performers to East Lancashire, like Manchester *Camerata*, *Illyria* Theatre Company and many more

**MID  
PENNINE  
Arts**



**Mid Pennine Arts**  
**Yorke Street, Burnley**  
**Lancashire BB11 1HD**  
**Telephone: 01282 421986**  
**Email: midpen@midpenninearts.demon.co.uk**  
**www. Coming Soon!**

# Calendar

## September/December 2000

### Exhibitions

Until 16th September	Shadow Chasers	Mid Pennine Gallery
2nd September-28th October	The Cut	Yorke St Burnley & Touring
Until 31st November	Buslife	
4th November-23rd December	100% Manmade: Christmas Crafts 2000	

### Calendar

#### September

4th - 8th	Canal Folk Art	Colne
Thursday 7th	Open Floor Poetry	Todmorden
11th - 20th	Creating Folk	Accrington
Friday 15th	Mikron Theatre Co.	Clayton-le-Moors
Saturday 23rd	C2K 2000 Candles Finale	Burnley

#### October

Sunday 1st	Writing Day	Todmorden
Sunday 8th	Northern Chamber Orchestra	Todmorden
Tuesday 10th	Writing Poetry Course	Clayton-le-Moors
16th - 18th	Words	Haslingden
Wednesday 18th	Kepow Theatre Co.	Rawtenstall
Saturday 21st	Words	Haslingden

#### November

Thursday 2nd	Open Floor Poetry	Todmorden
Thursday 9th	Camerata Orchestra	Colne
Thursday 23rd	Kintamarni Saxophone Quartet	Nelson

#### December

Sunday 3rd	Hallé Orchestra Excursion	Manchester
Thursday 7th	Musicians of Clerkenwell	Burnley
Tuesday 12th	NTC	Nelson
Wednesday 13th	NTC	Haslingden
Thursday 14th	Camerata Orchestra	Colne



Yorkshire Arts

Mid Pennine Arts gratefully acknowledges the financial assistance of the Borough Councils of Burnley, Hyndburn, Pendle and Rossendale, the Town Council of Todmorden, North West Arts Board, Yorkshire Arts and Lancashire County Council.

The work of Mid Pennine Arts is supported by the Corporate Membership of Co-operative Retail Services Ltd. and by the Membership of 57 non-profit making local organisations.

The information in this brochure is correct at the time of going to press but MPA reserves the right to cancel or amend the programme due to unforeseen circumstances.