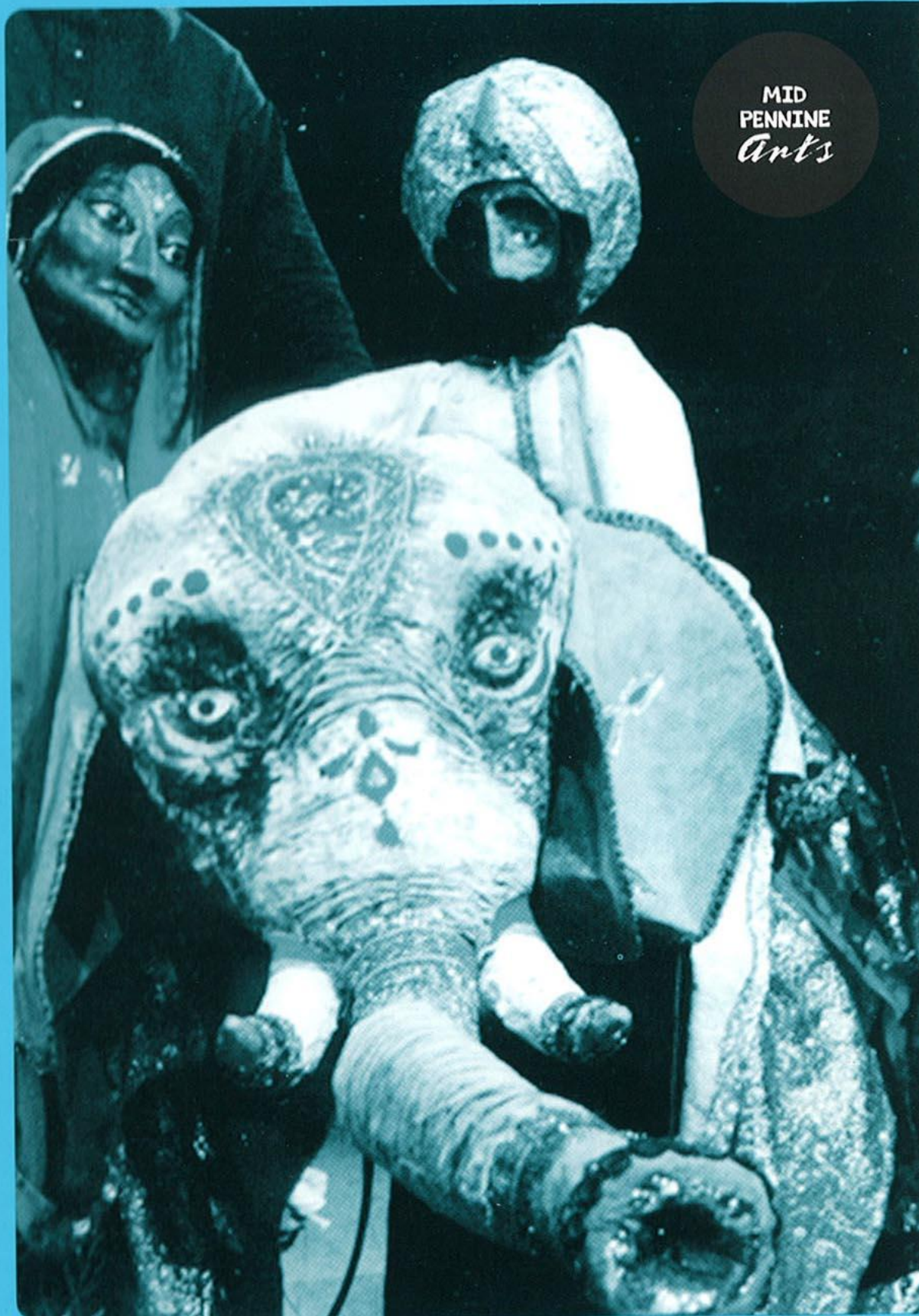
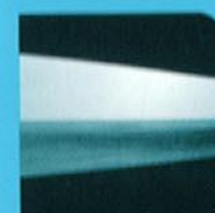


mid pennine arts



MID
PENNINE
Arts

sept to dec 2001

contents

PAGE NO

- 3 Classical Music
- 4-5 Performance
- 6-7 Community
- 8-9 Forest of Burnley

PAGE NO

- 10-12 Mid Pennine Gallery
- 13 Education
- 14 Literature
- 15 Mid Pennine Arts & Gallery Information

MID PENNINE ARTS

- The arts networking agency for East Lancashire
- An agency with a strategic role in developing the arts across your area
- Coordinator of a range of projects for our diverse local communities
- Arts for Asian communities
- Neighbourhood renewal projects
- Network building and strategic partnerships
- Project development and resource procurement
- Advice, support and information

OUR AIMS

- Quality, Diversity, Innovation**
Bringing the best in the arts to East Lancashire
- Access and Inclusion**
Involving people who have few creative arts opportunities
- Education**
Putting professional artists and schools together
- Work for Artists**
Creating opportunities to sustain professional practitioners
- Empowerment**
Encouraging local people to shape local provisions
- A Specialist Resource**
Contributing to regeneration and local strategies, combating social exclusion, delivering best value

OUR WORK INVOLVES

- Community Projects
- Education Programme
- Performances, festivals and special events
- Visual Arts in the Mid Pennine Gallery and touring
- Community Literature

VOLUNTEERS

Are you interested in?:

Performing Arts
Visual Arts
Art in Education
Community Arts
Marketing and Publicity
Administration

If so, Mid Pennine Arts are interested in **you**. We are looking for volunteers, who have a few hours a week to spare and who wish to gain experience of working within an art related environment. Please call June or Debbie on 01282 421986 for an information pack.

THE MPA TEAM

Janet Clunie *Performing Arts*
Fiona Venables *Visual Arts*
Debbie Baxter *Visual Arts Assistant*
David Smith *Education*
Marie Davies *Brierfield Arts & Cultural Project*
Sharon Allwood *Community Arts*
June Alyson Crossley *Administration*
Nick Hunt *Director*
Brenda Weller *Marketing & Publicity*
Mark Waddington *Publicity Assistant*
Ian Broscomb *Technician*

classical music

Northern Chamber Orchestra

Town Hall, Todmorden
Saturday 8 September. 7.30 p.m.

Tickets: £9.00 Conc. £7.00 Children £5.00

Nicholas Ward and Julia Hanson are the soloists in Bach's Concerto for Two Violins. Also included in the programme is Handel's - Concerto Grosso Opus 6 No 2; Grieg - Elegiac Melodies; Janacek - Suite for Strings and the ever favourite Eine Kleine Nachtmusik - Mozart.

This concert is part of the Todmorden Live Music Festival. For further information on the Music Festival contact the Todmorden TIC on 01706 818181.

Tickets available from NCO on 0161 247 2220 & MPA 01282 421986

Manchester Camerata Series

Municipal Hall, Colne
Talking Point Pre-concert Talk: 6.30 pm
Performance: 7.30 pm

Ticket Prices

<i>Seasons</i> -	Premier: £32	Conc. £28
	Standard: £28	Conc. £24
<i>Individual</i> -	Balcony: £10.00	Conc. £9.00
	Stalls: £9.00	Conc. £8.00
School Children £2.00 per concert.		

Tuesday 8 November

Symphonies by Haydn and Mozart, Baroque works by Telemann and Handel, to the warmth and beauty of 20th century master Malcolm Arnold's *Sinfonietta*.

Soloist: John Barrow,
Flute

Director:
Richard Howarth

Talking Point by
Jonathan Price/
Principal Cello



Thursday 6 December

Mozart's *Gran Partita* described by Douglas Boyd as an "opera without words" along with Dvorak's *Wind Serenade* is a perfect showcase for the orchestra's talented woodwind players.

Talking Point by Laurence Perkins/ Principal Bassoon
Conductor: Douglas Boyd

Thursday 7 February 2002

Corelli's *Concerto Grosso* was the inspiration for Sir Michael Tippett's *Fantasia*; this is a rare opportunity to hear them both on the same programme along with Mozart's *Oboe Concerto*, and the majestic *Jupiter* Symphony.

Soloist: Douglas Boyd, Oboe
Talking Point by Meiron Bowen/ Michael Tippett's biographer
Conductor: Douglas Boyd

Thursday 14 March 2002

A distinguished line up of soloists head this seasons finale. The evening will be the perfect way to celebrate the onset of Spring, with a programme of works inspired by humour, satire and irony.



Conductor: Douglas Boyd

For tickets and further details contact
Pendle Leisure on 01282 661234

The Manchester Camerata Series is presented by Pendle Leisure in partnership with Mid Pennine Arts.

Royal Northern College of Music Christmas Concert

Towneley Hall, Burnley
Wednesday 19 December. 7.30 p.m.

Tickets: £9.00 Members & Conc. £7.50

Celebrate Christmas in the elegant setting of Towneley Hall and join musicians from the Royal Northern College of Music in an evening of popular opera, operetta and festive music.

Free mince pie and mulled wine.

Early booking recommended.

performance

Barnoldswick Community Arts Event "Barlick Bugs"

The Square, Barnoldswick
Saturday 22 September. 10-4 pm

Moved from the original date in June due to unforeseeable circumstances the results of the workshops to make 'insect and bug' sculptures from recyclable materials will be on show in The Square. There will be a full programme by local musicians, dancers and theatrical productions to entertain the whole family.

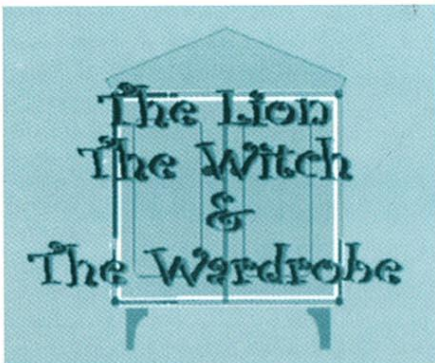
M & M Theatrical Productions "The Lion, The Witch & The Wardrobe"

Community Link, Bury Road, Haslingden
Saturday 29 September. 2 pm

Tickets: £3.50 Conc. £2.00

A cast of five actors weave their magic and re-create the eleven wonderful characters from C.S. Lewis' classic book.

The whole family will enjoy seeing this all time favourite story lovingly brought to life.



Mikron Theatre Company "Warehouse Hill"

The Albion, Clayton-le-Moors
Wednesday 3 October. 8 pm

Admission: by donation

The Huddersfield Narrow Canal took eighteen long hard years to build. When it opened in 1811, it was the highest canal in the country with the longest tunnel. It re-opened this May after extensive restoration.

The play focuses on the personal stories of those whose lives are connected to this Pennine waterway.



Mikron Theatre Company "Don't Start Here"

Village Hall, Foulridge
Wednesday 24 October. 7.30 pm

Tickets: £5.00 conc. £4.00

Judy lives in the city. Pete lives in the country. They decide to meet and that's where their problems begin. An up-to-the minute show about the chaos of travel in the 21st century.

The traffic may be jammed, the trains may be late but the show travels at a cracking pace, laced with humour and original songs and music.



The Fetch Mask and Puppet Theatre "The Land of Five Rivers"

Community Centre, Brierfield
Thursday 1 November. 7 pm

Tickets: £3.50 Conc. & Children £2.00

This family show is based on the ancient Punjabi legend, Rasalu. It will convey the audience to a land of snake princesses, scorpions, elephants and giant demons. It will be performed bilingually in English and Punjabi.

A special schools performance will be held on Thursday 31 October at the Civic Theatre, Oswaldtwistle. See Education section.



Red Ladder Theatre Company "Lowdown Highnotes"

Tuesday 6 November
Youth & Community Centre, Oswaldtwistle

Wednesday 7 November
Stoneholme & Daneshouse Community Centre, Burnley.

Thursday 8 November
Whitewell Bottom Youth & Community Centre, Waterfoot.

All performances start at 7.30 pm

Tickets: £3.00 to non-youth club members.

Paparazzi clicking, life exposing, autograph hunting, TV interviewing – Celebrity culture is taking over!

Meet Maggie, she's in search of a new identity, a new life! Pumpin' music, video imagery and live vocals.

Eye opening, theatrical, bang on – not to be missed.

A Joint Promotion with Lancashire Youth & Community Service

Freehand Theatre "Frogs and Snails & Teddy Bear Tales"

Community Link, Bury Road, Haslingden
Saturday 10 November. 2 pm

Tickets: £3.50 conc. £2.00

It's bear's birthday tomorrow. He's full of excitement. How will he ever get to sleep? Bedtime stories, of course.

Please bring a well-behaved teddy bear to the performance...



Refreshments available for bears and small children.

Northern Ballet Theatre "A Christmas Carol"

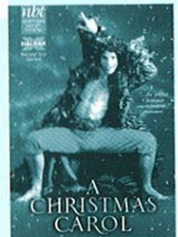
Excursion to The Grand Theatre, Leeds
Saturday 29 December. 2 pm

Cost: £19.50 Conc. £18.00 for Centre Balcony Seats

This magical recreation of Charles Dickens' A Christmas Carol is theatre, musical and ballet all wrapped into one sumptuous Christmas parcel. The show has been filmed by the BBC and played to capacity audiences throughout the UK, delighting audiences of all ages.

Pick-up points: Rawtenstall, Accrington, Burnley, Nelson, Colne.

Closing date for registrations: Monday 5 November. Ring Janet at MPA on 01282 421986.



community projects

Graffiti Art with Phluid

Artist Mark Cameron is working on a series of graffiti projects in the Hyndburn and Burnley areas.

These projects tackle vandalism head on, by engaging participants in creating outdoor artwork that says something about their lives and local environment.

Learn new techniques, use an interactive computer programme, then spray the design onto the final public site.

All ages are welcome. If you would like to take part or assist contact Mark Cameron on 07890 493204 or Nick Hunt at MPA on 01282 421986.

Join a Samba Band in Colne!

Via Samba is the community samba band. Sessions are every Monday, 7 - 9 pm, at Waterside Youth Club. Led by Dave Mason of Manchester School of Samba, each workshop combines practise at all levels.



New members are welcome and will enjoy this exhilarating excuse to make a very loud noise! For information, ring Nick at MPA on 01282 421986.

Environmental Art with Clayton-le-Moors Prospects Panel

Mid Pennine Arts and Clayton Prospects environmental group are working together to create two wrought iron gateways into the woods off Whalley Road. Artist Gavin Lewery will work with local people to design these entrances. Work starts this Summer to tidy and regenerate this beautiful piece of local parkland.

If you would like to get involved, contact the Prospects Foundation on 01254 380176.

Brierfield Arts and Cultural Project

The Brierfield Arts and Cultural Project continues to focus on participation in the arts for the Brierfield area. After the success of its Summer programme, the project is in a planning and consultation phase now. We are looking for those interested in taking part, especially; Schools in Brierfield, Bradley, Whitefield, Vivary Bridge and Waterside to take part in a long term project. Community or voluntary groups in those areas and individuals who would like to volunteer.



The Brierfield Arts and Cultural Project has been extremely successful in using the arts in the regeneration of this area. Now it's time to consolidate this success and reach more people and places.



Please contact Marie Davies on 01282 605871 or 0788 4187655 or at 15 Albion Street, Brierfield, BB9 5LG.

The Brierfield Arts and Cultural Project is funded via Pendle Partnership's share of the Government's Single regeneration Budget and European Social Fund.



Let's Celebrate

Banner making, costume design, float building, music-making, performance skills, video, puppet making and more... You can try any of these, and maybe get a qualification thrown in, as a participant in Let's Celebrate!

This massive new programme of arts opportunities kicks off this summer and runs for three years around six East Lancashire towns. Training courses are open to all, but especially aimed at young people in local Asian communities.

We want to unlock your creative talents, and feed that energy into some major summer events: Hyndburn Mela, Nelson Mela, the Brierfield Gala and new outdoor events for Burnley and Rossendale. If you live in one of those communities and want to help organise your local event, we would love to hear from you.

To find out more, ring Nick Hunt at MPA on 01282 421986. We'll put you on our mailing list for Let's Celebrate! information, so you don't miss any of these exciting opportunities.

Let's Celebrate! is organised by elaaF, the East Lancashire Asian Arts Forum, and Mid Pennine, in partnership with the Lancashire Youth & Community Service and local community organisations.



Asian Beats

Dhol drumming, traditional Asian vocal styles, keyboards old and new, sound technology and more. Our Let's Celebrate programme kicks off with these regular music sessions for young people. Wherever you are in the Mid Pennine area, there's one happening near you...

Asian Beats is organised with More Music in Morecambe. Sessions are led by Manchester-based

Manjeet Bhakar and other music animators. Whatever your special interest or your level of skill, there will be something to suit you. If you just love singing in the bath, that's a good enough start!

Accrington

Thursday evenings from September at the New Era Complex. Contact Parvinder on 01254 300113.

Brierfield

Wednesday evenings from September at Brierfield Youth Centre. Contact Marie on 01282 605871.

Rossendale and Burnley

Sessions starting October to be confirmed. Contact Nick on 01282 421986.

After School Sessions

If your school in Burnley, Hyndburn, Pendle or Rossendale would like to host one or a series of afternoon sessions, contact MPA Education Officer David Smith on 01282 421986.

Celebrating Eid

Friday 21 December, 7.30 pm
New Era Complex, Paradise Street,
Accrington

Through autumn, we will be organising artist sessions with local groups to work towards sharing their work at Celebrating Eid. If your local group would like to explore banner-making, dance, or whatever you fancy, contact Nick at Mid Pennine on 01282 421986.

Let's Celebrate has been made possible by the North West Arts Board, with funds from the Government's Single Regeneration Budget. Our programme is also supported by NWAB through the Regional Arts Lottery, and by Lancashire County Council Arts. Asian Beats is supported by the National Foundation for Youth Music.



forest of burnley

To celebrate the planting of 500,000 trees in the Borough of Burnley, Mid Pennine Arts is partnering the Forest of Burnley Team within Burnley Borough Council to initiate a series of community and education projects during the autumn and spring.



The Woodland Festival

Towneley Hall, Burnley
Sunday 7 October

Mid Pennine's contribution to this family afternoon is shadow puppet making workshop and a performance of the Cragg Vale Gamelan. An afternoon of fun and activity for all the family includes: traditional woodland crafts, music, theatre, and flying birds of prey.

Trees for Babies

Rowley Lake, Burnley
Sunday 14 October

Families of newly born August and September babies can celebrate by creating a family woodland on the north side of the lake. Each family will plant a tree and join the celebrations; eating together and enjoying entertainment including tree-dressing, face-painting, Jukalo the Juggler, and live music from the Dixieland Jazz Quartet.



If your family would like to be involved contact the Mid Pennine Office for an application form.



A Woodland Trail of Words

November

Poet Jackie Kay will work with pupils from St. Hilda's High School, St. Stephens' Primary School and members of the Pennine Ink Writers' Group in poetry workshops and woodland walks. They will visit the Padiham Grove Lane Woodland and the Towneley Woodland Trail and write about their experiences. In Spring 2002 sculptor Philip Bews will carve words from the project onto tree stumps and a specially commissioned handrail providing disability access to the Padiham Woodland.

Woodland Trail of Words

Poetry performance
Towneley Hall, Burnley
Friday 23 November, 7 pm Free

You can hear some of the poetry created by members of the school and community workshops at this free public performance, showcasing the work, which will become the 'woodland trail of words' in the spring.



A Celebration of a Millennium Woodland

Ridge Avenue, Burnley
Tree Dressing - Saturday 1 December
Celebration - Sunday 2 December

School and community groups will join forces in making tree dressings and lanterns in a number of arts workshops during November.

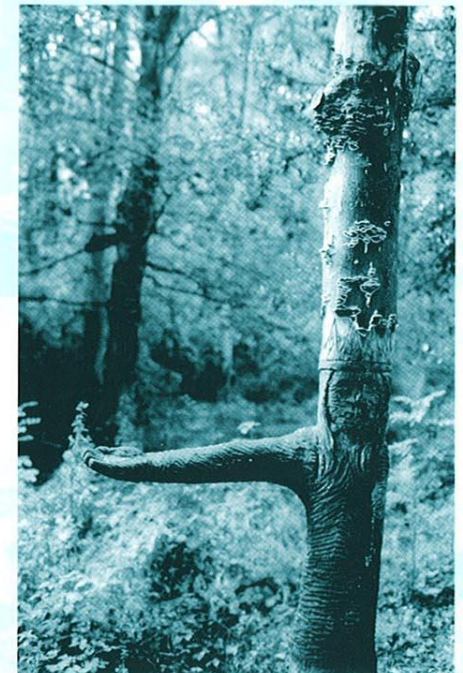
The celebration will culminate in a lantern procession through the Ridge Avenue estates before meeting up for a spectacular fire and light show. There will be live music and food will be available.

Concerto for a Million Trees

Towneley Hall, Burnley
10-14 December
Public Performance 14 December, 7pm

Pupils from Ivy Bank High School will work with artists from the Cragg Vale Gamelan in a series of music and shadow puppet workshops in Towneley Hall.

Their work will culminate in a free public performance of a new composition, 'Concerto for a Million Trees' in the Hall's Galleries. For details of all these activities contact David Smith at MPA on 01282 421986.



mid pennine gallery

Lightnin' Boy and the Boys Thursday 6 – Saturday 8 September

Following a series of public screenings around Burnley in August, *Lightnin' Boy and the Boys* comes to the Mid Pennine Gallery.

A humorous and moving documentary about the meaning of life for five men living in South-West Burnley, this documentary was developed over the last year by Manchester video maker Isabel Brotherson, working with the disparate members of a men's group.

Craig Healy (Lightnin' Boy), Alan Mottershead (Alias), Jamie Walker (Sounds Good), Andy Shaw (Lucky Man), and Sadat Mjekiqi (Sundown) present Burnley as a place to live from the perspectives of the Burnley-born, Burnley-settled and one Kosovan refugee.

The men introduce us to their homes, friends and families and escort us around the streets, pubs and clubs of Burnley. The video presents an insight into the frustrations experienced by working class men who face daily the prejudices and stereotypes inflicted upon their class, gender and regional identity. We perceive a mutual support structure that helps each of the men to combat such bigotries and maintain both self respect and the motivation to carry on.



Free Special Events Celebratory Screening at Mid Pennine Gallery Sunday 9 September, 1 pm - 4 pm

Mid Pennine Gallery invites you to join South West Burnley Men's Group for a celebratory screening of *Lightnin' Boy and the Boys*. Live entertainment from ANDI-IZ-MUSIC who provided the documentary's memorable soundtrack. Refreshments available.

This event marks the video release of the documentary. A limited number of copies are available. If your group would like one, please call Fiona at MPA on 01282 421986.

Final Screening with Introduction and Questions Lecture Theatre, Burnley College, Ormerod Rd Thursday 20 September 6.15 pm

Come and put your questions to the men who made the documentary and debate the issues it raises.

Booking is essential. To reserve seats, please call Fiona at MPA on 01282 421986.

'Lightnin' Boy and the Boys' has been produced by Mid Pennine Arts in association with South West Burnley Community Development Trust and was directed by Isabel Brotherson in collaboration with South West Burnley Men's Group. The project has been supported by Year of the Artist and the Francis C. Scott Charitable Trust.



"Looking for the Ideal Place to Pitch a Tent" Louisa Fairclough 15 September – 27 October

Louisa Fairclough's first solo exhibition is an installation comprising three new video projections detailing the artist's quest for the perfect place to pitch her tent.

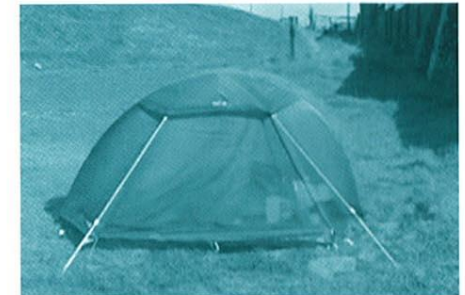
Over the past year, Louisa Fairclough has made a bicycle journey in stages around the British coastline, following the roads and paths that run closest to the sea. In motion during the day, as the light started to fall, Fairclough would pitch her tent looking out to sea at a place she deemed ideal:

When I'm cycling, I don't know where I'll pitch my tent until the moment arrives at the end of the day. I then soon find the ideal place.

Louisa Fairclough acknowledges the influence upon her work of J.M.W Turner and, specifically, his drawing of 1828, *The Force of the Tees*. In this work, Turner distorts perspective from his original sketch to create a different reading.

Each night during her journey, Fairclough set up a video camera to record the view. Video stills have been layered to form composite images. Both view and time are distorted in an attempt to realise something better – a fake beauty spot, an ideal of an ideal view.

Why do I need to go anywhere if I'm going to fake this journey? By escaping the regular routines of mundane existence, there is a sense of being almost outside time, the landscape is almost imaginary.Bicycling along the coast (is) a springboard for another journey that I'll inscribe back on the landscape.



mid pennine gallery

"Looking for the Ideal Place to Pitch a Tent"

Louise Fairclough

Free Special Events

Preview

Saturday 15 September, 1 pm - 3 pm

Join us in the Mid Pennine Gallery for wine and refreshments to celebrate the opening of the exhibition.

From 17 - 21 September, Louisa Fairclough will be leading a series of workshops with schools based upon walking and mapping routes around Burnley. See Education section.

'Looking for the Ideal Place to Pitch a Tent' has been supported by North West Arts Board.



Ironic Iconics

The Readymade in Contemporary Design

3 November - 22 December

Ironic Iconics comprises an impressive selection of work from some of the most respected and influential designer-makers working in this country: Ralph Ball, Jason Taylor, Freddie Robins, Gitta Gschwendtner, Carl Clerkin, Laura Potter and Sarah Crawford. In each of these artists' practices, existing objects - or 'readymades' - are appropriated and redeployed to diverse ends.

An ordinary object taken out of context, or subverted in some way, acquires a whole new meaning. A shark, taken into the gallery, becomes a statement upon mortality; an unmade bed becomes an accusation of voyeurism. The use of the readymade in the applied arts contains signifiers particular to that environment and can be used to contemplate, often jokingly, the nature and culture of domestic or personal objects. In the words of Ralph Ball:

Themes, forms and axioms characteristic of the genre are re-invented in ironic twists.

A selection of the work on show and individual artist-made cards are available to buy.

Free Special Events

Preview

Saturday 3 November, 1pm - 4pm

Join us for a pre-Christmas glass of wine in the Mid Pennine Gallery and enjoy the wide array of work on show. All are welcome.

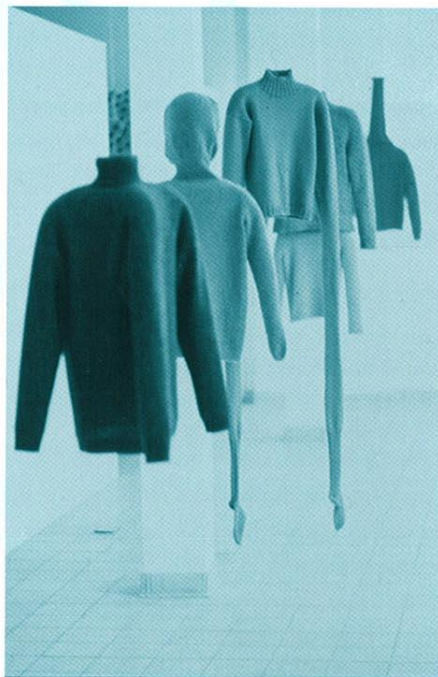
Gallery Activities

Saturday 24 November - 1 December

2pm £1.50 Per Person payable on the day.

Using 'Ready Made' objects (found objects) we will be transforming the 'ready made's' into sculptural forms and giving them new meaning. Come along for an afternoon of fun, creativity and the chance to re-invent your found objects.

For further details and booking please call Debbie, Wed-Sat on 01282 421986.



education

Louisa Fairclough artist in residence

17th - 21st September

A terrific opportunity for a group of older students to work with Louisa Fairclough whose exhibition 'Looking for the Ideal Place to Pitch a Tent', is at the Mid Pennine Gallery.

Students will spend a day walking and talking with Louisa and recording their journey in photographs, sketches and words before returning to their own art rooms for practical workshops.

Artist Rosemary Smith

Pendle Art Gallery, Barrowford

September.

Rosemary Smith will work with pupils from St. Paul's Primary School, Nelson, for a full day. The children will create artwork in response to Richard Clare's 'Vivid Landscapes' exhibition at the Barrowford Gallery.

Presented in partnership with the Pendle Art Gallery.

Jennifer Collier artist in residence

24 - 28 September

Students from Nelson and Colne College and Burnley College will work with artist Jennifer Collier in response to Caroline Broadhead's acclaimed exhibition "Chiaroscuro" which featured in Mid Pennine Gallery's summer programme.



The Fetch Theatre Company

Oswaldtwistle Civic Theatre

Wednesday 31 October at 1-30 p.m.

Tickets £2 children; staff and carers free.

'The Fetch' bring to life tales from the Punjab through a mixture of high quality story telling and puppetry.



Live Music Now! North West

Chinook Clarinet Quartet

Free Concert for Special Schools

Leisure Hall, Bacup

October at 10.30 am

The successful collaboration between Mid Pennine Arts and Live Music Now! continues with this concert for special needs school children.

For details contact Janet at MPA on 01282 421986

'Trees in the Classroom'

with Gordon MacLellan

Pendle Heritage Centre, Barrowford

Thursday 8 November

Cost £70

Environmental artist Gordon MacLellan will run an in-service training day for primary school teachers focusing on practical classroom strategies for teaching environmental education through the arts.



Camerata Workshops

Thursday 8 November

String and wind players from the Manchester Camerata are offering workshops for pupils/ students at all levels. Individual programmes to suit the needs of your school/ college.

For details of all these activities contact David Smith at MPA on 01282 421986.



literature

Haslingden Trade Marks Community literature in Rossendale

United Trades Club, Regent Street,
Haslingden

Haslingden Trade Marks is a group of local writers and poets dedicated to promoting the spoken and written word regardless of cultural or sexual boundaries, via workshops, performance and publications.

Haslingden Writers Creative Writing Group

Meets every 1st and 3rd Wednesday of each month at 7.30pm for a workshop on an aspect/ genre of writing. There's a chance to test your work in progress on the rest of the group for comments and critiques.

Live at the Trades

All performances start at 7.30pm.
Admission £2.00

29th August - Comedian and poet Hovis Presley
26th Sep t- Quibilah Montsho
31st October - Rosie Lugosi, Lesbian Vampire Queen

Open floor spot for all the poets in the audience.

Haslingden Splash!

A performance poetry group currently performing their show "A Cycle of Life" and hoping to book more dates for this production.

If you would like to find out more or get involved contact Martin Peacock on 01254 389250 or Sally James on 01706 826227.



welfare state international

"Ford"

Higherford Mill, Barrowford

From Saturday 13 October-

Sunday 2 December

Every Saturday and Sunday during
daylight hours

Ford is a new creation by the internationally renowned Welfare State returning to their East Lancs roots. A promenade installation and soundscape will be made by a sculptor, a painter, a printmaker and a musician working collectively from mid September to mid October 2001.

Together they will create linked environments throughout the ground floor of Higherford Mill, including: a virtual waterwheel, engineered in sound and kinetic sculpture; and animated ghost loom; a paradise tree of bird and animal lanterns and a welded Islamic geometric structure.

Higherford Mill is at a crossroads, saved from demolition and now linked with the Pendle Heritage Centre it will become a significant landmark and a place where new artistic collaborations and patterns of working may be forged.

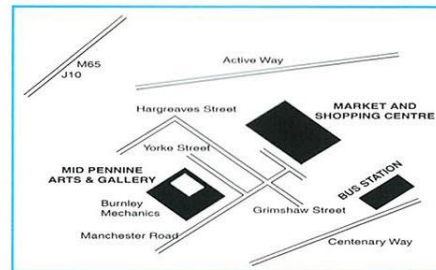
Ford will be a beautiful and original place to visit during the dark days of Autumn.

For information ring Pendle Tourist Information Centre on 01282 661701

This project is organised by Chrysalis Arts and the Heritage Trust for the North West, in partnership with MPA. It is supported by North West Arts Board and Lancashire Council Arts.

MID PENNINE ARTS & GALLERY

yorke street
burnley
lancashire
bb11 1hd



BOOKING TICKETS

IN PERSON: Call in at Mid Pennine Gallery, Yorke St. Open Monday to Saturday 10am – 5pm, Tuesday open 10am – 1pm. (Or buy tickets in your area – see under BUY YOUR TICKETS LOCALLY.)

BY PHONE: (01282) 421986

BY FAX: (01282) 429513

All Access, Eurocard, Mastercard and Visa cards all accepted.

BY POST: Write to us at FREEPOST BU 87 at the above address. Please make cheques payable to MPA and enclose an S.A.E

RESERVATIONS: Reservations will be held for three days.

CONCESSIONS: Concessionary rates are available to our MEMBERS, those in full time education, unemployed people, senior citizens and registered disabled people.

GROUP BOOKINGS: Buy ten tickets and receive the eleventh free. For larger parties contact Janet to discuss rates.

BUY YOUR TICKETS LOCALLY

MPA TICKETS ARE AVAILABLE FROM:

Accrington: The Information Shop, 3 Abbey St, Hyndburn Leisure, Town Hall.

Bacup: Public Library, St. James Square.

Barnoldswick: Tourist Information, Fernlea Avenue.

Clitheroe: Tourist Information Centre, Church Walk.

Colne: Pendle Leisure, 61 Albert Rd.

Haslingden: Public Library, Deardengate.

Hebden Bdge: Tourist Information Centre, 1 Bridgegate.

Nelson: Tourist Information Centre, Town Hall.

Rawtenstall: Central Library, Queens Square.
Tourist Information Centre, 41-45 Kay St.

Todmorden: Bear Wholefoods, 29 Rochdale Rd.
Tourist Information Centre, 15 Burnley Rd.

Becoming a member of MPA

BENEFITS OF MEMBERSHIP:

- Save £1.50 at most events.
- 10% discount on most cash purchases from the Gallery.
- Equipment loans: theatre equipment; children's play inflatables and more.
- Advance information: a forthcoming season brochure mailed direct to your home.
- Personal Invitations to join MPA staff and other members at Gallery openings and other special events.
- Discount for the use of MPA's distribution service 'Promotion Network.'

All this for just £9 (£12 joint) annual membership, or just £4 if you are a student, unemployed, a senior citizen or registered disabled person. Becoming a member is easy. Just call into the Mid-Pennine Gallery, telephone or write to us for a membership form. Return it with your payment and you become a member immediately. So don't delay, join today.

september to december programme at a glance

mid pennine arts

Yorke Street, Burnley, Lancashire, BB11 1HD Telephone 01282 421986 fax 01282 429513
email: midpen@midpenninearts.org.uk [www:midpenninearts.org.uk](http://www.midpenninearts.org.uk)

Exhibitions	6-8 September	Lightnin' Boy and the Boys	
	15 September – 27 October	Looking for the Ideal Place to Pitch a Tent	
	3 November- 22 December	Ironic Iconics	
September	Saturday 8	Northern Chamber Orchestra	Todmorden
	Sunday 9	Exhibition Preview	Burnley
	Saturday 15	Exhibition Preview	Burnley
	Monday 17-Friday 21	Louisa Fairclough, Artist in Residence,	Burnley
	Saturday 22	Barlick Bugs	Barnoldswick
	Monday 24	Rosemary Smith, Artist in Residence,	Barrowford
	Wednesday 26	Live at the Trades	Haslingden
	Saturday 29	M & M Theatrical Productions	Haslingden
October	Wednesday 3	MikronTheatre Company	Clayton-le-Moors
	Sunday 7	Woodland Festival	Forest of Burnley
	Saturday 13	Welfare State International	Barrowford
	Sunday 14	Trees for Babies	Forest of Burnley
	Wednesday 24	Mikron Theatre Company	Foulridge
	Wednesday 31	Live at the Trades	Halsingden
	Wednesday 31	The Fetch	Oswaldtwistle
November	Thursday 1	The Fetch	Brierfield
	Friday 2	Live Music Now!	Bacup
	Saturday 3	Exhibition Preview, Mid Pennine Gallery	Burnley
	Tuesday 6	Red Ladder Theatre	Oswaldtwistle
	Wednesday 7	Red Ladder Theatre	Burnley
	Thursday 8	Red Ladder Theatre	Waterfoot
	Thursday 8	"Trees in the Classroom"	Barrowford
	Thursday 8	Manchester Camerata	Colne
	Saturday 10	Freehand Puppets	Haslingden
	Friday 23	A Woodland Trail of Words,	Burnley
December	Saturday 1	Tree Dressing	Forest of Burnley
	Sunday 2	Celebration of a Millenium Woodland	Forest of Burnley
	Thursday 6	Manchester Camerata	Colne
	Friday 14	Concerto for a Million Trees	Burnley
	Wednesday 19	Royal Northern College of Music	Burnley
	Friday 21	Eid Celebration	Accrington
	Saturday 29	Excursion: Northern Ballet	Leeds

Mid Pennine Arts gratefully acknowledges the financial assistance of the Borough of Councils of Burnley, Hyndburn, Pendle and Rossendale, the Town Council of Todmorden, North West Arts Board, Yorkshire Arts and Lancashire County Council.

The work of Mid Pennine Arts is supported by the membership of over 50 non-profit making organisations.

The information in this brochure is correct at the time of going to press but MPA reserves the right to cancel or amend the programme due to unforeseen circumstances.

