

mid pennine arts
nov 2002 to
jan 2003



mpa 
MID PENNINE ARTS

Welcome to a new season of arts events around the Mid Pennine area

We hope you will find plenty here to sustain you through the dark months of midwinter.

For lovers of classical music, there are two opportunities to enjoy Manchester Camerata in intimate, chamber mode. In Colne, Camerata's thirtieth anniversary celebration season, presented by Pendle Leisure, continues with an ensemble evening. In Burnley, we welcome these outstanding musicians to Towneley Hall for a festive evening of Christmas brass.

Also for Christmas there's a choice of outstanding theatre for children and their families. We welcome back NTC with the Grimms classic Rumpelstiltskin, and Freehand's Tales from a Treehouse continues the regular Haslingden series.

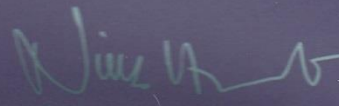
A hint of fairy tale haunts the work of the acclaimed artist Susan Cutts, whose delicate, poignant new

installation we present in the Mid Pennine Gallery from November. Join us in the Gallery for consistently high quality shows, for the popular weekly life drawing sessions, and even free coffee on Saturdays!

Our multicultural project Funkaar celebrates the diversity of the festive season in Accrington, and offers training in creative skills, with new courses in banner making and puppet building. Or join our community band Dhamak and try dhol drumming. The Five Wards Project is offering community arts action around the neighbourhoods of Pendle, and in Oswaldtwistle's Foxhill Bank Nature Reserve we present a series of artist residencies through winter and spring.

Our previous programme of environmental arts work is now captured in a vivid set of postcard images. If you took part in the project, if you are looking for an unusual gift, or if you are simply interested in the places where art meets landscape, you will find the Arts in the Forest jewel box available in the Gallery.

We look forward to seeing you, there or elsewhere, in the very near future. Thank you for supporting MPA and the arts around East Lancashire.



Nick Hunt
Director

Contents



Mid Pennine Arts	3
Classical Music	4
Literature	6
Performance	6 & 7
DHAMAK Collective	8
November Calendar	9
December Calendar	10
January Calendar	11
Mid Pennine Gallery	12 & 13
Environmental Arts	14 & 15
Five Wards Arts and Cultural Project	16 & 17
Funkaar	18
Membership	19
Information and Map	20

Mid Pennine Arts

The arts networking agency for East Lancashire

An agency with a strategic role in developing the arts across our area

Co-ordinator of a range of projects for our diverse local communities

OUR AIMS

Quality, Diversity, Innovation

Bringing the best in the arts to East Lancashire

Access and Inclusion

Involving people who have few creative arts opportunities

Education

Putting professional artists and schools together

Work for Artists

Creating work opportunities for local and visiting artists

Empowerment

Encouraging local people to shape local provision

A Specialist Resource

Contributing to regeneration and local strategies, combating social exclusion, delivering best value

OUR WORK INVOLVES

- Community Projects
- Education Programme
- Performances, festivals and special events
- Visual Arts in the Mid Pennine Gallery and touring
- Community Literature
- Arts for Asian communities
- Neighbourhood renewal projects

- Network building and strategic partnerships
- Project development and resource procurement
- Advice, support and information

VOLUNTEERS

Are you interested in:

Performing Arts, Visual Arts, Art in Education, Community Arts, Marketing and Publicity, Administration.

If so, Mid Pennine Arts are interested in *you*. We are looking for volunteers, who have a few hours a week to spare and who wish to gain experience of working within an art related environment.

Please call Brenda or Emma (01282 421986) for an information pack.



THE MPA TEAM

Nick Hunt	Director
Melanie Diggle	Administration Director
Neil Harris	Visual Arts
David Smith	Education
Linda Newton	Environmental Arts
Marie Davies	Five Wards Arts & Cultural Project
Naushad Surve	Funkaar Project
Brenda Weller	Marketing/Publicity
Richard l'Anson	Technician
Janet Clunie	Performance



Classical Music



CELEBRATE 30 YEARS OF MANCHESTER CAMERATA

Manchester Camerata Series
Municipal Hall, Colne

Pre-concert Talk: 6.40 pm
Performance: 7.30 pm

Ticket Prices

Balcony: £10.50 Conc. £9.50
School Children: £2.00 per concert.

Manchester Camerata is celebrating its 30th anniversary this season and each concert explores the theme of celebration.

The Manchester Camerata Series is presented by Pendle Leisure in partnership with Mid Pennine Arts.

CELEBRATE: ENSEMBLE SHOWCASE

Thursday 28 November 7.30 pm
Municipal Hall, Colne

Celebrate the talents of Camerata Ensemble players with three highly contrasted works and one common factor – cheerfulness.

Martini Serenade No 2 for 2 violins and viola
Mozart Clarinet Quintet in A
Schubert Octet in F

Talking Point 6.40pm: Jonathan Price in discussion with Manchester Camerata's Leader, Richard Howarth.

For tickets and further details contact Pendle Leisure on 01282 661234

CHRISTMAS CONCERT CAMERATA BRASS ENSEMBLE

Regency Room, Townley Hall Burnley, Wednesday 11 December 7.30pm, Tickets: £9 Conc. £7.50 includes mulled wine & mince pies

Naomi Atherton (horn) and Helen Quayle (trumpet) are joined by brass players from the Manchester Camerata in a light hearted celebration for Christmas in the elegant surroundings of Towneley Hall. Come and join us for an evening of seasonal festivities.

Programme includes:

John Iveson – Christmas Crackers
Horowitz – Music Hall Suite
Irving Berlin – Puttin' on the Ritz

Fats Waller – Aint Misbehavin'

To book tickets please call Mid Pennine Arts on 01282 421986 or email info@midpenninearts.org.uk



Literature

FAMILY ILLUSTRATION WORKSHOPS With Illustrator STEVE HUTTON

Clitheroe Library
Saturday 16 November
10am- 3pm

£5 per participant

Steve, an illustrator of traditional tales, will explain how he works with writers and publishers to build up character.

PENNINE INK Pennine Ink Writers Workshop The Woodman Hotel, Todmorden Road, Burnley,

Pennine Ink writers group will judge the entries in the Kicking Leaves writing competition, winners will be published.

OPEN FLOOR READINGS

White Hart, Todmorden
First Thursday of the month.
£2.50 per session

All poets both old and new friends are invited to come along and read their work and listen to a guest Poet.

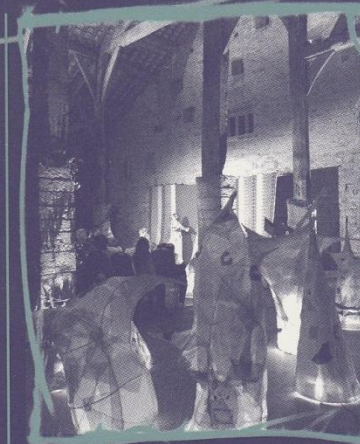
Thursday 7 November at 8 pm Guest Poet LAURA SHERIDAN

Burnley based founder member of Pennine Ink writers group, whose work has been published in Myslexia magazine.

Thursday 5 December at 8 pm Guest Poet KENDAL EATON

Haslingden based poet well known on the Manchester performance poetry scene.

For further details on all Pennine Ink events please contact Christine Potter on 01706 815004.



'Barn, Bats and Stories'
Storytelling with Jacqueline Harris at Gawthorpe Hall. Part of 'Kicking Leaves' Childrens Literature festival from Mid Pennine Arts.



Performance



MISFITS THEATRE COMPANY STICK GRANNY ON THE ROOF- RACK

Central Library, Accrington,
Tuesday 19 November 7.30pm,
Tickets: £5, conc. £4

Marie won it on a scratch card...the holiday of a lifetime. There had to be a catch and there was...it was for all the family.

Presented with Hyndburn Women's Forum



*To book tickets please call
Mid Pennine Arts on 01282 421986*



RED LADDER THEATRE COMPANY

WISE GUYS

New Era, Accrington
Monday 25 November @ 7.30pm

Stoneyholme & Daneshouse
Community Centre, Burnley
Tuesday 26 November @ 7.30pm

Whitewell Bottom Youth &
Community Centre, Waterfoot
Thursday 28 November @ 7.30pm

Red Ladder Theatre return to youth
centres in East Lancashire.

Wise Guys bursts into action with the
passion and drama of street culture
combined with teenage energy.

Mike, Skid, Darren: three lads:
Hanging in the city

Keeping it together- trying to
survive!!

Mixing cutting edge digital media and
a strong physical theatre style, the
play follows the journey of a gang of
urban youth. A visually stunning
production of adventure is
guaranteed in Wise Guys.

Tickets: £3, Free to Youth Club
Members



*Joint promotion with Lancashire
County Youth & Community Service*

FREEHAND TALES FROM A TREEHOUSE

Community Link, Haslingden
Saturday 7 December 2 pm
Tickets: £3.50, conc. £2.50

A man rediscovers the treehouse of
his childhood-
Full of buried memories, forgotten
secrets and Grandfather's tales.
A small boy looks up at a tall tree.
And wonders if he will ever climb to
the top.

The leaves of a family album fall
from the family tree.

For children 5 - 11 years old



*To book tickets please call
Mid Pennine Arts on 01282 421986*

NTC TOURING THEATRE COMPANY

RUMPELSTILTSKIN

Civic Theatre, Nelson
Wednesday 11 December 1.30 pm

Haslingden Primary School
Thursday 12 December 10.30 am
and 1.30 pm. All tickets: £2

A retelling of this classic fairytale
from the brothers Grimm. A beautiful
miller's daughter with magical
powers may be able to get the King
out of his miserable position. His
royal vaults which were once full of
gold are now stuffed with straw!

Rumpelstiltskin arrives to help. Will
the miller's daughter be able to
achieve impossible tasks and what
will she have to give Rumpelstiltskin
in return?



*To book tickets please call
Mid Pennine Arts on 01282 421986*

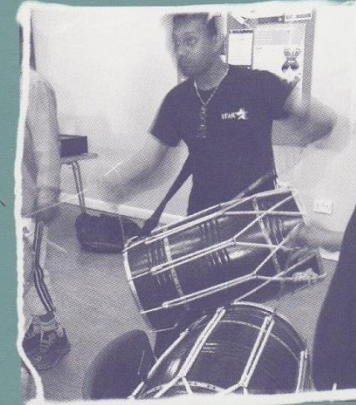
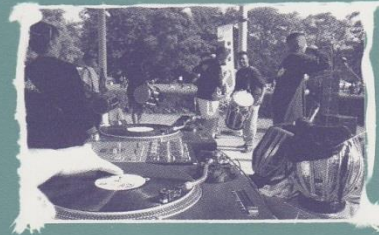


DHAMAK Collective

East Lancashire's first community dhol band mixes Asian dhol drumming with rap and DJing.

The Dhamak Collective emerged from music workshops around our local towns and made its first public performances at local Melas this Summer.

Dhamak will be getting together every Monday through the Winter, and new members are very welcome.



FREE WORKSHOP SESSIONS

New Era, Accrington, Every Monday at 6.30 – 9.30pm

Call Naushad or Nick on 01282 421986 to find out more.

Programme at a glance

★ November

MONDAY	TUESDAY	WEDNESDAY	THURSDAY	FRIDAY	SATURDAY	SUNDAY
28 DHAMAK Collective: 6.30–9.30pm FREE New Era Accrington details P.8	29	30 mid pennine gallery Life Drawing 7-9pm See P.13	31	01	02 mid pennine gallery Exhibition Opening Susan Cutts ASHES OF ROSES, 1-4pm See P.12 Refreshments provided	03
04 DHAMAK Collective: 6.30–9.30pm FREE New Era Accrington details P.8	05	06 mid pennine gallery Life Drawing 7-9pm See P.13	07 Pennine Ink Poetry Readings, Laura Sheridan. Whitehart Hotel, Todmorden 8pm See P.5	08	09 mid pennine gallery : free coffee ART Trolley	10
11	12	13 mid pennine gallery Life Drawing 7-9pm See P.13	14	15	16 Family Illustration Workshop, Clitheroe Library 10-3pm See P.5 mid pennine gallery : free coffee ART Trolley	17
18	19 Stick Granny on the Roof- Rack: 7.30pm, Central Library, Accrington, details P.6	20 mid pennine gallery Life Drawing 7-9pm See P.13	21	22	23 mid pennine gallery : free coffee ART Trolley	24
25 Wise Guys, Red Ladder Theatre Co. 7.30pm New Era, Accrington, P.6	26 Wise Guys, Red Ladder Theatre Co. 7.30pm Stoneyholme & Daneshouse Community Centre, Burnley, P.6	27 mid pennine gallery Life Drawing 7-9pm Wise Guys, Red Ladder Theatre Co. 7.30pm Whitewell Bottom, P.6	28 Manchester Camerata, Municipal Hall, Colne, 6.40pm Details P.4	29	30 mid pennine gallery : free coffee ART Trolley	01



Programme at a glance

★ December



MONDAY	TUESDAY	WEDNESDAY	THURSDAY	FRIDAY	SATURDAY	SUNDAY
02	03	04 mid pennine gallery Life Drawing 7-9pm See P.13	05 Pennine Ink Poetry Readings, Kendal Eaton, Whitehart Hotel, Todmorden 8pm See P.5	06	07 Tales from a Tree House, Freehand Theatre Company, 2.00pm Community Link, Haslingden, details P.6	08
09 DHAmak Collective: 6.30-9.30pm FREE New Era Accrington details P.8	10	11 Rumpelstiltskin, NTC 1.30pm, Civic Theatre, Nelson, P.6 Christmas Concert, Towneley Hall, Burnley, 7.30pm Details P.4	12 Rumpelstiltskin, NTC 10.30am & 1.30pm, Public Hall, Haslingden, details P.6	13	14 mid pennine gallery : free coffee ART Trolley	15 Community Fun Day, New Era, Accrington, details P.18
16 Last week to see Susan Cutts ASHES OF ROSES at mid pennine gallery	17	18	19	20	21	22
23	24	25	26	27	28	29
30	31	01	02	03	04	05

Programme at a glance

★ January

MONDAY	TUESDAY	WEDNESDAY	THURSDAY	FRIDAY	SATURDAY	SUNDAY
30	31	01	02	03	04 Funkaar Puppet Making Course, Brierfield Youth & Community Centre 1.30-3.30pm See P.18	05
06	07	08	09	10	11 Funkaar Puppet Making Course, See P.18 mid pennine gallery Exhibition Opens KENNETH MARTIN, P.13	12 Funkaar Puppet Making Course, See P.18 Funkaar Banner Making Course, 1.30-3.30pm New Era, Accrington See P.18
13 DHAmak Collective: 6.30-9.30pm FREE New Era Accrington details P.8	14	15 mid pennine gallery Life Drawing 7-9pm See P.13	16	17	18 Funkaar Puppet Making Course, See P.18 mid pennine gallery : free coffee ART Trolley	19 Funkaar Puppet Making Course, See P.18 Funkaar Banner Making Course, 1.30-3.30pm New Era, Accrington See P.18
20 DHAmak Collective: 6.30-9.30pm FREE New Era Accrington details P.8	21	22 mid pennine gallery Life Drawing 7-9pm See P.13	23	24	25 Funkaar Puppet Making Course, See P.18 mid pennine gallery : free coffee ART Trolley	26 Funkaar Puppet Making Course, See P.18 Funkaar Banner Making Course, 1.30-3.30pm New Era, Accrington See P.18
27 DHAmak Collective: 6.30-9.30pm FREE New Era Accrington details P.8	28	29 mid pennine gallery Life Drawing 7-9pm See P.13	30	31	01 mid pennine gallery : free coffee ART Trolley	02 1.30-3.30pm New Era, Accrington See P.18



Mid Pennine Gallery

SUSAN CUTTS

ASHES OF ROSES

2 November – 21 December

For Mid Pennine Gallery, Susan Cutts has created a new installation in handmade paper, inspired by eighteenth century church records:

".....every page revealed happy and sad events, events remembered events forgotten - other peoples memories. I wanted to release these long forgotten memories from the page.."

Whilst looking through the lists of marriages, baptisms and funerals the artist was struck by the high death rate of infants and mothers.

'ashes of roses' is comprised of a box for every week of pregnancy arranged in a configuration of weeks and months. Each box contains a pair of

adult ballet shoes enveloping those of an infant, secured together by intertwining laces and encircled by a wreath of roses.

The adult shoes represent the fairy tale bride; the child's, the bride's fulfilment and purpose. The laces tie the mother and child together like an umbilical cord. The wreaths of roses represent both purity and death.

The use of Handmade paper, multiples, boxes and the 'language of clothing' are all ongoing themes in Susan Cutts' work.

Susan Cutts graduated from the London College of Furniture in 1991 and has exhibited widely at national and international level, with her highly acclaimed work.



SPECIAL EVENT

Exhibition Opening

Saturday 2 November, 1pm – 4pm

ashes of roses will open on Saturday 2 November with a selection of wine and refreshments available.

mid pennine gallery

Yorke Street, Burnley, Lancs. BB11 1HD

Monday - Saturday 10am - 5pm,
Tuesday 10am - 1pm

Contact: Neil Harris, Visual Arts Officer or Emma, Gallery Assistant,
Tel: 01282 421986 email: gallery@midpenninearts.org.uk

KENNETH MARTIN

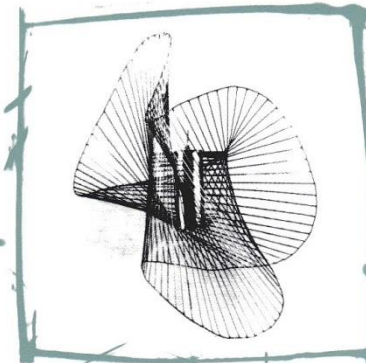
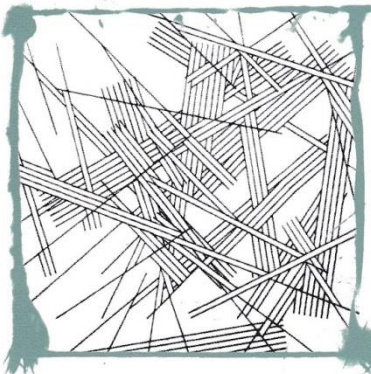
11 – 23 January 2003

"I have attempted to achieve a form from the simplest basic principles.... It is not a reduction to a simple form of the complex scene before us, it is the building by simple events of an expressive whole."

Kenneth Martin's working method began with a simple unit and a basic set of rules. He would build with them to see what would result. The process was both logical and inventive. In this way a complex rhythm and form would evolve.

He became associated with the Constructivist Movement, however his work cannot be so narrowly defined.

This exhibition of 21 works from the Arts Council Collection spans his career, from the early figurative pastel drawing 'Girl Combing her Hair' (1941) to the 'Chance and Order' paintings of the 1970's.



Kenneth Martin was born in Sheffield in 1905 and died in London in 1984 having showed throughout his career at Annely Juda Fine Art, London, Tate Gallery, London (1975), Yale Center for British Art, New Haven (1979), and the Serpentine Gallery, London (1985).

GALLERY ACTIVITIES

FREE coffee in the gallery on Saturdays. Pop in rest your feet, stimulate your brain & look at something a little bit different.

LIFE DRAWING CLASSES

Every Wednesday 7-9 pm. Easels & paper provided. Tuition available if required.

£5 / conc. £2.50 per session or £25 for six sessions booked in advance.

For further information, please drop in to the gallery or call 01282 421986 between 10am & 1pm Wednesday & Thursday or 10am - 5pm on Friday & Saturday.

SATURDAY AFTERNOON ART TROLLEY

Art materials available for anyone to respond to the work. Look out for details of formal workshops coming soon.



Environmental Arts



ARTS IN THE FOREST

Arts in the forest Postcard packs are now available from Mid Pennine Arts. If you were involved in 'Trees for Babies', 'Millennium Woodland celebration' at Ridge Avenue, 'Through the Wood', 'Trail of Words' or the 'Concerto for a Million Trees' finale or would just like some attractive cards do call us to order your pack or come in to the gallery and pick one up.

£3.50 per pack / £3.00 members and concs.

EAST LANCASHIRE MADE (ELM)

Mid Pennine Arts and its partners continue to highlight the role of arts in regeneration with an ambitious 4-year programme of workshops, residencies, celebratory events, and

exhibitions on an East Lancashire Made theme. Artists will work on environmental and woodland sites throughout East Lancashire sourcing local materials and building a legacy of long-term improvements to the local environment.

XPOSURE

A flagship strand of ELM will be Xposure, a series of 6 architectural design Icons developed around the theme of 'viewing'. These will take the form of shelters, viewing platforms and beacons to be located on highpoint sites throughout East Lancashire. The Icons will provide the visiting public with spectacular views of East Lancashire's beautiful landscape.



FOXHILL BANK NATURE RESERVE Oswaldtwistle

Two linked projects each with two artists collaborating together and with the local community.

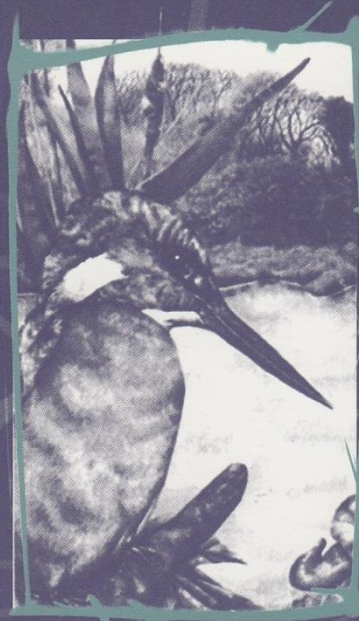
Throughout November and December writer, Alan Brown, will work with children from two local schools researching the history of the site and related local industries and interviewing people who worked in the nearby calico mill.

Alan will also run a one day workshop with a local community group exploring the theme of 'water' and it's wildlife.

These writing workshops will culminate in a public performance and a publication and exhibition of the writings produced.

Willow artist, Goeff Allen will then create a giant willow sculpture informed by the words and images in the writings. Using willow, hazel and dogwood grown on site he will also participate in the Bank Erosion project by building willow screens along the water's edge, again incorporating images inspired by the children's poems.

*If you would like to get involved or just be kept informed of developments please contact David Smith at Mid Pennine Arts
tel: 01282 421986
email: david@midpenninearts.org.uk*



In Spring 2003, designer and craftsman Eliot Baron and musician Leo Nolan will collaborate on creating a large timber frame multi sensory installation, housing a percussion instrument and stage area. The installation will provide a focus point and provide a working platform for school groups and community activity on the site.

Musician Leo Nolan will creating soundscape of natural and man-made sounds to characterise Foxhill Bank. Leo will also be working with local children to produce a celebratory show to christen the new installation.

Five Wards Arts and Cultural Project



Five Wards Arts and Cultural Project is all about empowering community members in the wards of Brierfield, Bradley, Whitefield, Vivary Bridge and Waterside. Using the arts to create discussion, unearth individual's creative potential and tackle the big issues such as education, crime, community safety, health, employment and environment from the ground up.

Get involved, have your say, make a difference to your community and have some creative fun. All projects are open to individuals, community groups and schools based in the five wards.



If you'd like to take part or just find out more about any of these projects please contact Marie Davies, on 01282 421 986 or 07884 187655, write to Five wards Arts and Cultural Project at the Mid Pennine Arts address or email m.davies@ukonline.co.uk.



THE GREEN SPACE PROJECT

Local residents and community groups will come together to find and transform a site in each ward with environmental arts such as sculpture, mosaics, stonework and murals.

The first stage of this project is underway in Vivary Bridge with a site identified on Birtwistle Avenue and work is underway to identify a site in Waterside.



BRIERFIELD

★ Creative writing project

How Brierfield has changed! Through the eyes of older members of the community.

If you are over 65 and are interested in remembering and writing it down, get in touch.

★ Cultural Centre

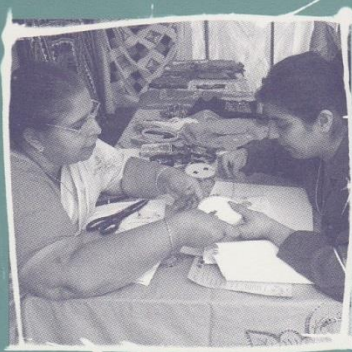
Brierfield Action in the Community have been setup and are looking at raising funding to secure a building in Brierfield as a Cultural Centre.

Are you interested in getting involved?

Do you have any material to contribute? Would you like to help develop a museum?

WHITEFIELD

- ★ A young women's photography and writing project.
- ★ Accredited training course in textiles.



BRADLEY

- ★ Young people's projects, both for male and females, in music and
- ★ dance, Dj'ing, dhol drumming, street dancing your thing?



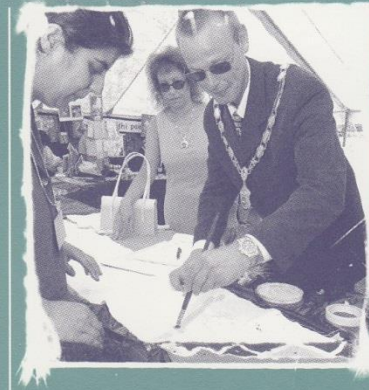
VIVARY BRIDGE

- ★ The GREEN SPACE project on Birtwistle Avenue.
- ★ A video project for young people charting the process of the Green Space Project.

- ★ An arts based project for young people looking at issues important to them using performance, video and music.

WATERSIDE

- ★ Waterside Drugs Project: a drama project looking at issues around drug usage amongst young adults.
- ★ Waterside Heritage Trail: looking at setting up a heritage trail in Waterside and working with local residents to develop the idea.



If you live in any of the wards and you have some time to give you want to learn a new skill you are interested in the arts

please, get in touch.

The Five Wards Arts and Cultural Project is designed and funded to help create discussion, make changes, give new opportunities, offer advice and training. We can't do it without you.



Funkaar

Funkaar has been made possible by North West Arts Board, with funds from the Government's Single Regeneration Budget. Our programme is also supported by NWAB through the Regional Arts Lottery, with funds from the Arts Council of England.



COMMUNITY FUN DAY

New Era, Accrington
Sunday 15 December

The entire New Era complex is booked all day and will be filled with:

- ★ Arts & Crafts workshops
- ★ Sports workshops
- ★ Health & beauty displays
- ★ Cookery events
- ★ Talent shows
- ★ Mini concert
- ★ Information stalls

to celebrate community diversity at a time around Eid, Diwali and Christmas.

For further information please contact Naushad Surve on 01254 30018, Parvinder Sohal on 01254 300110 or Waqar Abassi on 01254 380202

FUNKAAR COURSES

Join a Funkaar course and you can:

Get arts training, Work towards a qualification, Develop your talents, Use your new skills, Participate in celebratory arts and community events

Who are the courses for?

Anyone over 16 who is interested can apply. Some of the courses are reserved for women only.

What qualification can I achieve?

Each course is awarded one credit from the open college network (OCN).

Help with childcare and language support are available.



NEW COURSES BANNER MAKING

New Era, Accrington, Sundays 1.30-3.30pm, starts Sun 12 Jan for 10 weeks, enrolment & information from 12 noon
tutor: Hafeeza Mohammed

The course also offers an introduction to a variety of banner making techniques including: Reverse Appliqué, Masking Tape Relief, Silk Screening Printing, Block Printing, Embroidery, Weaving, Batik

Contact Naushad on 01254 30018 or Parvinder Sohal on 01254 30010



PUPPET MAKING

Brierfield Youth and Community Centre, Saturdays & Sundays 1.30 – 3.30 pm, For 4 weeks, Starts Sat 4 Jan at 1.30 pm
tutor: Martin Pearson

Make a bunraku puppet from design, making the character head and mechanism, painting and dressing the puppet and performance technique.

If you wish to enrol or require further information on the courses please contact Naushad Surve on 01254 30018 or email naushad@midpenninearts.org.uk



Mid Pennine Arts Membership

We are currently updating and renewing our membership package. Look out for full details in the next brochure. In the meantime, here are some of the benefits that you or your organisation could receive by joining Mid Pennine Arts.

Benefits to Community Groups and Local Organisations:

- ★ MPA is currently investing in new equipment for hire.
- ★ Access to MPA 'promotion network' distributing publicity material across East Lancashire.
- ★ Advertising opportunities in our new style brochure.
- ★ Your event listed in our 'Programme at a Glance' calendar.

- ★ Advice, support and partnership in promoting your own projects.
- ★ Ticket printing service. Get professional tickets printed for your event.

Benefits to Individuals:

- ★ Free season brochure mailed to your home.
- ★ Additional regular mailings with in depth information on aspects of our programming.
- ★ Personal invitations to join other members and MPA staff at private views, exhibition openings, where you can meet the artist, and other special events.

If there's anything you'd like to see MPA offering as part of our membership package do get in touch. Help us to give you the best possible service.

Write to Brenda Weller at
MID PENNINE ARTS,
Freepost BU 87, Yorke Street,
Burnley, Lancashire, BB11 1HD or
email info@midpenninearts.org.uk

Many thanks

Mid Pennine Arts gratefully acknowledges the financial assistance of the Borough Councils of Burnley, Hyndburn, Pendle and Rossendale, the Town Council of Todmorden, North West Arts Board and Lancashire County Council.

The work of Mid Pennine Arts is supported by the Membership of over 50 non profit making organisations.

The information in this brochure is correct at the time of going to press but MPA reserves the right to cancel or amend the programme due to unforeseen circumstances.



Information

BOOKING TICKETS

In person:

Call in at Mid Pennine Gallery,
Yorke St. Open Monday to
Saturday 10am – 5pm, Tuesday
open 10am – 1pm.

By phone: (01282) 421986

By fax: (01282) 429513

All Access, Eurocard, Mastercard
and Visa cards all accepted.

By post:

Write to us at FREEPOST BU 87 at
the above address. Please make
cheques payable to MPA.

Reservations:

Reservations will be held for three
days.

Concessions:

Concessionary rates are available
to our MEMBERS, those in full
time education, unemployed
people, senior citizens and
registered disabled people.

Group Bookings:

Buy ten tickets and receive the
eleventh free. For larger parties
contact Janet to discuss rates.



MID PENNINE ARTS & GALLERY

Yorke Street, Burnley, Lancs BB11 1HD
tel: 01282 421986 fax: 01282 429513
email: info@midpenninearts.org.uk