



mpa
MID PENNINE ARTS

mid pennine arts
events & activities
november 2003 to
january 2004

Welcome to another season of exciting events and projects around East Lancashire. As winter starts to bite, we hope you will find something in the following pages to bring an extra warm glow into your life.

Starting this winter, there's the big new Land programme of environmental arts work. Land will be tempting you outdoors to discover more about your glorious local landscape, with imaginative projects happening all over East Lancashire. You will find a summary here, but look out for the Land leaflet for the full story.

Alongside this programme, the companion project Panopticons is now in development, with an ambitious plan to create a new generation of landmarks for our area.

You can even find out about Panopticons and stay warm. Join us in the Mid Pennine Gallery in November-December for a fascinating look at the international design competition that launched the project this summer. Run by RIBA, the contest attracted architects and designers from as far

afield as Egypt and Canada. Come and see some of the results.

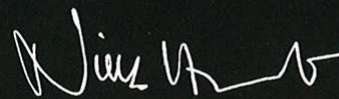
New year in the Gallery offers something very different, from leading sound artist Lee Patterson. There's free coffee on Saturdays, new regular life drawing sessions, and a warm welcome whenever you call...

Also this winter, we welcome Manchester Camerata back to Colne, with a new concert series presented by Pendle Leisure and a programme full of popular favourites.

After a summer of very lively festivals, our multicultural project Funkaer will be helping create winter celebrations for Eid and Christmas, and inviting local people to start planning for next year. And the very popular workshop band Dhamak will be running a new series of open rehearsals.

For schools, our education programme looks after the teachers this term, with an exciting series of opportunities to stimulate the creative juices. Meanwhile, the innovative Five Wards Project will be tapping the creativity of local people young and old.

Thank you for supporting MPA, and the arts around East Lancashire. We look forward to seeing you soon.



Nick Hunt
Director

Contents



MPA unlocking creativity	3
Classical Music	4 - 5
Environmental Arts	6 - 7
Mid Pennine Gallery	8 - 10
November Calendar of Events	11
December Calendar of Events	12
January Calendar of Events	13
Funkaer Multicultural Arts	14 - 15
Five Wards community project	16 - 17
Education/work in schools	18 & 19
DHAMAK contemporary music community band	20 & 21
Information and map	22

Mid Pennine Arts Unlocking Creativity

The independent arts service for East Lancashire
An agency with a strategic role in developing the arts across our area
Co-ordinator of a range of projects for our diverse local communities

OUR AIMS

Quality, Diversity, Innovation

Bringing the best in the arts to East Lancashire

Access and Inclusion Involving people who have few creative arts opportunities

Education Putting professional artists and schools together

Work for Artists Creating work opportunities for local and visiting artists

Empowerment Encouraging local people to shape local provision

A Specialist Resource Contributing to regeneration and local strategies, combating social exclusion, delivering best value

OUR WORK

- Community Projects
- Education Programme
- Performances, festivals and special events
- Visual Arts in the Mid Pennine Gallery and touring
- Community Literature
- Arts for Asian communities
- Neighbourhood renewal projects
- Network building and strategic partnerships
- Project development and resource procurement
- Advice, support and information

Mid Pennine Arts gratefully acknowledges the financial assistance of the Borough Councils of Burnley, Hyndburn, Pendle and Rossendale, the Town Council of Todmorden, Arts Council, North West and Lancashire County Council.

The work of Mid Pennine Arts is supported by the Membership of over 50 non profit making organisations.

The information in this brochure is correct at the time of going to press but MPA reserves the right to cancel or amend the programme due to unforeseen circumstances.



THE MPA TEAM

Nick Hunt	Director
Melanie Diggle	Administration
David Smith	Education
Linda Newton	Environmental Arts
Marie Davies	Five Wards Project
Naushad Surve	Funkaer Project
Neil Harris	Visual Arts
Emma Midgley	Visual Arts
Brenda Weller	Marketing/Publicity
Janet Clunie	Performance
Jill Penny	Community Projects



Classical Music

Manchester Camerata is a chamber orchestra in residence at Manchester's Bridgewater Hall. The orchestra's name was inspired by 16th century group of artists called the Florentine Camerata who met to share ideas and discuss the arts. Their spirit of friendship inspires Manchester Camerata's approach to music making.

MANCHESTER CAMERATA ORCHESTRA SERIES

Municipal Hall, Albert Road, Colne.

Box Office Tel. No. 01282 661234

All concerts start at 7.30 p.m.

Season Ticket Prices:

Full price £40.00, Concession £34.00

THURSDAY 23 OCTOBER

Tickets: Full price £8.00,
Concession £7.00

Programme

Mozart Piano Quartet in E Flat K493
Hummel Piano Quintet in E Flat Op 87
Schubert Piano Quintet in A 'Trout'
Manchester Camerata Ensemble with
Martin Roscoe - Piano

This programme contains some of the best loved quartets and quintets of the 18th century including Schubert's 'Trout' Quintet; one of the most recognisable pieces of chamber music ever written. Pianist Martin Roscoe who makes a welcome return to the Municipal Hall and who joins the Camerata Ensemble for the evening, is one of the finest pianists on the international concert circuit.



Martin Roscoe

Jennifer Pike took part in the BBC Young Musician competition in 2002 at The Barbican Centre when she captivated the audience with her performance. For this concert she joins the Camerata Artistic Director and Principal Conductor in an evening of bold musical statements by Beethoven and Mozart.



SUNDAY 23 NOVEMBER

Tickets: Full price £14.00
Concession £12.00

Programme

Beethoven Coriolan Overture
Mozart Violin Concerto No 4 in D
Mozart The Marriage of Figaro,
Overture
Beethoven Symphony No. 8
Conductor Douglas Boyd
Violin Jennifer Pike



Jennifer Pike

SUNDAY 1 FEBRUARY 2004

Tickets: Full price £14.00
Concession £12.00

Programme

Elgar Serenade for Strings
Haydn Cello Concerto in D
Elgar Introduction and Allegro
Op 47
Schubert Symphony No 5 in B Flat
Conductor Douglas Boyd
Cello Hannah Roberts

Douglas Boyd returns to the Municipal Hall for this concert featuring Haydn's entertaining Cello Concerto in D. Also in the programme is Schubert's Fifth Symphony, one of his finest, and two quintessentially English pieces for strings – Elgar's Serenade and his Introduction and Allegro Op 47.



Douglas Boyd

SUNDAY 28 MARCH 2004

Tickets: Full price £12.50
Concession £10.00

Programme

Vivaldi Four Seasons
Tchaikovsky Serenade for Strings
Op 48
Director/Violin Gordan Nikolitch

Leader of the London Symphony Orchestra, Gordan Nikolitch directs the strings of Manchester Camerata for this concert of musical evergreens. Vivaldi's Four Seasons has been hugely popular with audiences since its composition in 1725, and Tchaikovsky's radiant Serenade for Strings is one of the finest works of its kind in the repertoire.



Gordan Nikolitch

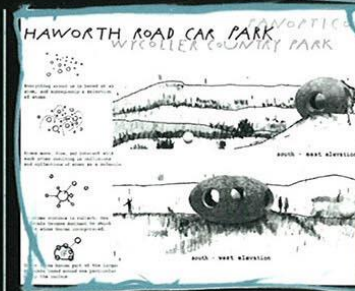


The linked **Panopticons** and **Land** projects are now well under way, following the announcement of the first three winning **Panopticon** designs in the summer and the publication of the **Land** events programme. The four-year projects, launched by ELEAN (the East Lancashire Environmental Arts Network), aim to create distinctive environmental improvements which will help develop an identity for the East Lancashire Regional Park. They will involve artists, makers, designers and architects, and also schools and local communities.

PANOPTICONS

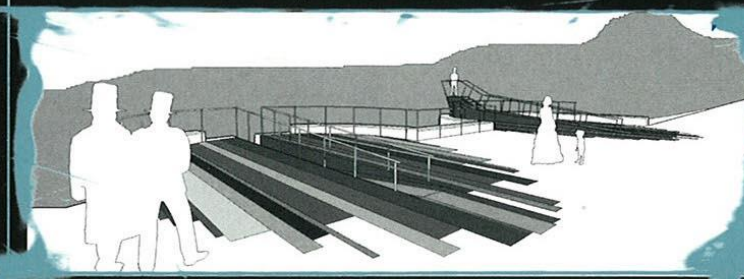
This is a major initiative to create six new architect-designed landmarks for East Lancashire – one in each district. They are to be called **Panopticons** – literally 'all-seeing' structures – and will be a striking addition to the landscape. An international competition was held in spring 2003 to find designs for the first three **Panopticons** and attracted interest from all over Britain and Europe.

Bristol-based architect Peter Meacock secured a first prize for his design, 'The Atom', intended for a site overlooking Wycoller Country Park, Pendle. Architect/artist partnership Jo Rippon and Sophie Smallhorn from London were winners in the Blackburn category for their 'Multicoloured Pavours', designed for the site of the former Cannon Battery in Corporation Park. The third winning design came from local



landscape architect John Kennedy, of Tockholes, for his 'UFO'. A site for this design has yet to be announced.

Subject to further consultation with local interest groups, construction of the first two **Panopticons** should begin in the new year. Designs for the second phase will be commissioned at a later stage in the four-year programme. For more information visit www.panopticons.uk.net



Panopticons designs for Blackburn (above) and Wycoller (top right)

LAND

The **Land** programme offers schoolchildren and local people in all six districts of East Lancashire the opportunity to work with professional artists and be directly involved in developing the Regional Park and improving their own environments.

This autumn, schools and local groups can take part in artist-led activity related to the development of the **Panopticons** through workshops, residencies and celebratory events. They can also be involved in developing distinctive trails though the Regional Park by helping artists create woodland sculptures, way markers and contemporary artworks in a variety of natural materials.



Current and future plans also include large-scale community events such as lantern processions, a promenade theatre production, musical celebrations and exhibitions.

A brochure containing full details of the **Land** autumn programme is now available. If you would like to know more about what's going on in your area or take part in any activities please contact David Smith at Mid Pennine Arts for your copy on 01282 421986 or david@midpenninearts.org.uk

If you would like to join the mailing list to receive future information about either of the projects, please contact Brenda Weller at Mid Pennine Arts on 01282 421986 or brenda@midpenninearts.org.uk

***Panopticons** and **Land** are projects of the East Lancashire Environmental Arts Network, managed by Mid Pennine Arts and financially supported by the Northwest Development Agency and East Lancashire Partnership's Regional Park programme. The projects are also supported by Arts Council England, North West, Lancashire County Council, the local authorities of Blackburn with Darwen, Burnley, Hyndburn, Pendle, Ribbles Valley and Rossendale and Pendle Leisure Trust.*

NB See page 8 for details of our autumn exhibition showing entries from the **Panopticons** design competition.



Taking part in artist-led activity. Photos taken by Jill Penny and Nigel Hillier.

Mid Pennine Gallery



PANOPTICONS

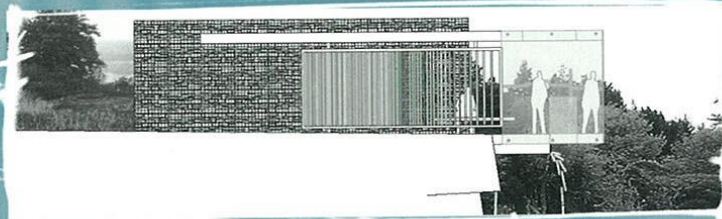
Architectural Landscapes

08 November – 20 December

This exhibition offers the opportunity to view in detail some of the designs from the RIBA-run **Panopticons** architectural competition for new landmarks in East Lancashire. The competition captured the imagination of architects and artists far and wide and attracted entries from all over the

UK and Europe. The exhibition will consist of the winning designs from the first round of the competition shown along side the 'jury's choice', made up of personal selections from the remaining designs that express the energy and imagination of the project.

**Special Event
Exhibition Opening**
Thursday 13 November, 5.30pm–8pm
Drinks provided



'Waterfall' by Douglas McCorkell, Ed Blackett and Kate Blackburn, Mackintosh School of Architecture, Glasgow.

LEE PATTERSON

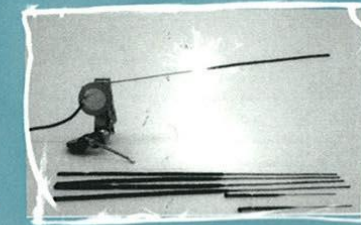
10 Jan – 14 Feb 04

Lee is a sound artist, with interests in Live Art, Improvised music and composition. He works with sound as a property of location and material. His performances highlight and expose sound as a hidden feature of object and process. He is currently working on the 1st Out Bursary scheme, run for the Irwell Valley Sculpture Trail. He has also performed at 'eXpo', Nottingham, the 'Root X' festival, Hull, and 'New Territories', Glasgow. In recent performances Lee has been orchestrating situations within precise locations to capture and exploit the phonic properties of carefully selected materials.

For Mid Pennine Gallery Lee will continue his research through a series of performative experiments in which

he will address his sense of intrigue to potential audiences. This will be done by exposing the hidden sounds and 'sonic music' embodied within familiar landscapes. The work and its outcomes may take the form of live delivery, radio broadcast, sonic/sculptural intervention, or via a new media presentation.

**Special Event
Exhibition Opening**
Thursday 15 January, 5.30pm–8pm
Drinks provided



FLEX SPACE

January

KICKING LEAVES

Text based exhibition about last year's 'Kicking Leaves' Children's Literature Festival organised by Mid Pennine Arts with the Lancashire Library Service.

Two 'Kicking Leaves' books were published this Autumn, with a well attended launch at Mid Pennine Gallery in October. The books are available to buy at £2.00 each and will be appearing in all East Lancashire Libraries very soon.

Two anthologies have been published, one featuring work from children 7–13 years old, the second from young people aged 14–16.

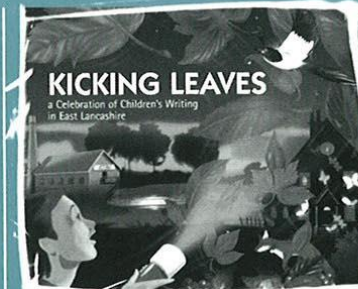
The exhibition will be based around the production of the two anthologies and will include: competition entries, work from the illustrators and recordings of children reading their own work.

There will be opportunities for children visiting the gallery to participate in the exhibition by joining in writing games.



Courtesy of Burnley Express

'Kicking Leaves' publications designed & produced by Christopher Lord Design, cover illustration by Steve Linnel



February

EXPLORING YOUR ENVIRONMENT THROUGH THE ARTS

Gordon MacLellan and children from four East Lancashire primary schools.

Following a series of high quality workshops in Wycoller Country Park, a touring exhibition of the children's work will visit three points in East Lancashire.

Jan: Pendle Heritage Centre

Feb: Mid Pennine Gallery Flex Space

March: The Aisled Barn at Wycoller Country Park.

Mask and puppet making, short story writing & poems, triptych's, sticky story boards, and banner making.



Mid Pennine Gallery



C-SPACE

This is an area that has been created within Mid Pennine Arts to promote the work of local artists. There is a lot of local talent in this area for which the space has been especially created. The exhibition will change every four weeks and will offer viewers a chance to see the wide variety of work being produced locally.

Exhibitions will be very open in view to promoting the wealth of local talent and will run independently from the main exhibitions in the gallery. The only constraint is that the work must fit the format of the frames currently situated in the space.

Those interested in exhibiting their work in this space can contact either Emma or myself for further discussion, or alternatively, send a proposal along with some images and a short statement to:

Neil Harris
Visual Arts Officer
Mid Pennine Arts
Yorke Street, Burnley
Lancs. BB11 1HD

EXTRA GALLERY ACTIVITIES:

Life drawing classes

Every Wednesday 7 – 9pm. Materials provided. Tuition available if required.

£5/conc. £2.50 per session or £25 for six sessions booked in advance.

For further information, please drop in to the gallery or call 01282 421986 between 10am & 1pm Wednesday & Thursday or 10am – 5pm on Friday and Saturday.



Art trolley

Art materials available for anyone to respond to work. Look out for details of formal workshops coming soon.

Free coffee

Free coffee in the gallery on Saturdays. Pop in and rest your brain and look at something a little bit different.

mid pennine gallery

Yorke Street, Burnley, Lancs, BB11 1HD

Monday–Saturday 10am–5pm

Tuesday 10am–1pm

Contact Neil Harris (Visual Arts Officer) or Emma Midgley (Gallery Assistant) on tel: 01282 421986
fax: 01282 429513 or
email gallery@midpenninearts.org.uk


Programme at a glance

★ November 2003

MONDAY	TUESDAY	WEDNESDAY	THURSDAY	FRIDAY	SATURDAY	SUNDAY
27 DHAmak Open Sessions Details P.20	28	29 mid pennine gallery Life Drawing Classes 7-9pm Details P.10	30	31 Halloween Lantern Procession @ Wycoiler Park See P.7	01	02
03 DHAmak Open Sessions Details P.20	04	05 mid pennine gallery Life Drawing Classes 7-9pm Details P.10	06	07 DHAmak perform @ Stage One, Morecambe, Details P.20	08 Panopticons exhibition starts at mid pennine gallery Details P.8 DHAmak perform @ Gateshead, Details P.20	09
10 DHAmak Open Sessions Details P.20	11	12 mid pennine gallery Life Drawing Classes 7-9pm Details P.10	13 Panopticons Exhibition Opening at midpenninegallery Details P.8	14 What is Sculpture course for Teachers Details P.18 DHAmak perform @ Stage One, Colne, P.20	15	16
17 DHAmak Open Sessions Details P.20	18	19 Rossendale Mela Committee meeting Details P.15 mid pennine gallery Life Drawing Classes 7-9pm Details P.10	20	21	22	23 Manchester Camerata @ Colne Municipal Hall Details P.4
24 DHAmak Open Sessions Details P.20		26 mid pennine gallery Life Drawing Classes 7-9pm Details P.10	27	28	29	30



Programme at a glance

★ December 2003 

MONDAY	TUESDAY	WEDNESDAY	THURSDAY	FRIDAY	SATURDAY	SUNDAY
01 DHAmak Open Sessions <i>Details P.20</i>	02 Hyndburn Mela Committee meeting <i>Details P.14</i> Dance in Primary Schools course for Teachers P.18	03 Live Music Now for Special Schools <i>Details P.19</i> mid pennine gallery, Life Drawing Classes See P.10	04 Burnley Eid & Christmas Community Celebrations <i>Details P.14</i>	05 DHAmak @ Burnley Mechanics supporting Legacy P.20 Gordon MacLellan environmental arts course for teacher <i>Details P.9</i>	06 Rossendale Eid & Christmas Community Celebrations <i>Details P.14</i> DHAmak @ Fuse P.20	07
08 DHAmak Open Sessions <i>Details P.20</i>	09	10 mid pennine gallery Life Drawing Classes 7-9pm <i>Details P.10</i>	11	12	13	14 Hyndburn Eid & Christmas Community Celebrations <i>Details P.14</i>
15 DHAmak Open Sessions <i>Details P.20</i>	16	17 mid pennine gallery Life Drawing Classes 7-9pm <i>Details P.10</i>	18	19	20	21
22	23	24	25	26		28
29	30	31	01	02	03	04

Programme at a glance

★ January 2004

MONDAY	TUESDAY	WEDNESDAY	THURSDAY	FRIDAY	SATURDAY	SUNDAY
29	30	31	01	02	03	04
05 'Exploring your environment through the arts' opens in FLEX SPACE mid pennine gallery <i>Details P.9</i>	06	07 mid pennine gallery Life Drawing Sessions <i>Details Pg.10</i>	08	09	10 Lee Patterson exhibition starts at mid pennine gallery <i>Details P.8</i>	11
12 DHAmak Open Sessions <i>Details P.20</i>	13	14 mid pennine gallery Life Drawing Classes 7-9pm <i>Details P.10</i>	15 Exhibition Opening of Lee Patterson exhibition at mid pennine gallery <i>Details P.8</i>	16	17	18
19 DHAmak Open Sessions <i>Details P.20</i>	20	21 mid pennine gallery Life Drawing Classes 7-9pm <i>Details P.10</i>	22	23	24	25
26 DHAmak Open Sessions <i>Details P.20</i>	27	28 mid pennine gallery Life Drawing Classes 7-9pm <i>Details P.10</i>	29	30	31	01



Funkaar

Three fun packed and informative social evenings to celebrate the seasonal festivities of Eid and Christmas across 3 of our East Lancashire boroughs.

HYNDBURN EID & CHRISTMAS COMMUNITY CELEBRATIONS

New Era, Accrington
Sunday 14 December 6–10pm

Keynote speakers will talk on health matters and there will be music, food, exhibitions, face painting, workshops, arts & crafts and henna painting.

If you wish to take part, or hold a stall or exhibition please contact Naushad Surve on 01282 421986 or Parveen Akhtar 0792 9067187

Mid Pennine Arts in partnership with the AWAAZ Group and Hyndburn Youth & Community Services.

BURNLEY EID & CHRISTMAS COMMUNITY CELEBRATIONS

Thursday 4 December
Burnley Mechanics 7–8.30pm

The flavour and theme of the celebrations will very much be along the theme of celebrating diversity, understanding and respect for the 'Burnley' community.

The evening will comprise of key guest speakers relaying the significance of celebrations and community harmony. Entertainment, refreshments and arts and crafts exhibits will be on display.

For further information, please contact Naushad Surve 01282 421986

Mid Pennine Arts in partnership with Burnley Borough Council.

ROSSENDALE EID & CHRISTMAS COMMUNITY CELEBRATIONS

Venue to be confirmed
Saturday 6 December 3–7 pm

A special social get together for the people of Rossendale.

Children enact the nativity and recite Naats.

A priest and Imam will give presentations on the virtues and philosophies behind Eid & Christmas.

Followed by multicultural music and entertainment in the form of exhibitions and workshops in arts, crafts, henna painting and face painting.

If you wish to take part, or hold a stall or exhibition please contact Naushad Surve on 01282 421986 or Elaine Walsh on 01706 217777.

Mid Pennine Arts in partnership with Rossendale Youth & Community Services and Rossendale Borough Councils Leisure Services



Photographs taken by Nigel Hillier at this Summer's Melas and Festivals.

MELA COMMITTEES

Did you attend any of the Funkaar Melas and Festivals in 2003?

Do you have ideas, time or skills to help organise your local Mela in 2004?

Planning has already started, so if you'd like to get involved please contact the people below:

ROSSENDALE MELA COMMITTEE MEETINGS

Wednesday 8 October at 7pm
Wednesday 19 November at 7pm
Wednesday 3 December at 7pm

At District Youth & Community Office (Old Fire Station), Grange Street, Rawtenstall

Contact Naushad Surve 01282 421986 or Elaine Walsh 01706 244673



HYNDBURN MELA COMMITTEE MEETINGS

Tuesday 30 September at 6 pm
Tuesday 2 December at 6 pm

At New Era, Paradise Street, Accrington

Contact Naushad Surve 01282 421986 or Parvinder Sohal 01254 300110



COURSES

Banner Making

November – December

Mary Hindle Centre, Rawtenstall

Learn a new arts skill in Banner making. A 20 hour long course over the 2 months, with 10 hours of self-study. At the end of the course on successful completion you will be awarded one credit from the Open College Network (OCN).

The courses are for anyone over the age of 16 years of age.

This course is reserved strictly for women.

Contact Naushad Surve 01282 421986



Five Wards Arts and Cultural Project



SHOUT OUT LOUD!

Performance about identity and unity
Jan – April 2004

"..this project...broke down barriers. This group of girls came together and worked together and the explosion it created was massive..."
(Samina Kauser, (Walton High School) talking about Girls on Film.)

Girls on Film, the project, is now over but its impact both for the 5 Wards Project and its partners has been far reaching.

For a number of reasons Girls On Film was important in the wider community. It brought a very diverse group of people into one room and encouraged them to celebrate the work of young people from diverse

communities. It was also willing to hand over to young people the responsibility of speaking out, on subjects such as culture, art, drugs, violence and what it is like to live in a place like Nelson. The project put the arts central to both the success and the quality of the process and final products.

"I've been shouting about community cohesion for almost five years. And now, after this project people are talking about it". (Mashuq Hussain, (Edge End High School) talking about Girls on Film.)

So.....the partnership continues!

SHOUT OUT LOUD! is the new project now underway.

The original partners: Five Wards Arts and Cultural Project, The

Prince's Trust, Walton High School and Edge End High School are joined by Primett High School and Mansfield High School which are putting forward young people.

The partnership will once again be working with writer and director Mandy Precious but SHOUT OUT LOUD! will be performance based and will see a group of 12 - 15 young people devise and perform a piece of theatre looking at issues of identity and unity.

The group will be mixed race, gender and ability and the partners hope this project will have just as positive impact on the group as GIRLS ON FILM had on the 10 girls involved. The piece will be performed in schools and community venues in before Easter.



Pendle Partnership



EUROPEAN COMMUNITY
Regional Development Fund

MEMORIES PROJECT UPDATE

Work on the Old Brierfielders had been somewhat on hold until further funding for the project could be confirmed. Fortunately, the Five Wards Project worked with Brierfield Action in the Community on several successful bids and now the project is back on track.

A good deal of information, in both interview and pictorial form has been collected from older people in Brierfield and in October, as part of a wider Memories project, an evening of reminiscence was held at Mansfield High School. As part of a wider steering group, the 5 Wards Project organised along with Building Bridges Interfaith Community Project for pupils from Mansfield to be trained to use recording equipment by North

West Sound Archives. Parents and Grandparents were invited to a social evening at the school where the pupils interviewed them about their memories of Brierfield over the years.

The next step of the project is to use all the material which has been generated so far as the basis for a collection of new stories to be generated by a professional storyteller. The artists will work not only with the material but with a group of Brierfield residents made up of young and elder people in which they will be asked to look at their perceptions of one another and create new stories based on these perceptions.

An evening of storytelling will then be held in Brierfield to which all participants will be invited.

If you are interested in any of the projects co-ordinated by the Five Wards Arts and Cultural Project or would like copies of publications please contact:

Marie Davies at Mid Pennine Arts
on 01282 421986 or
email marie@midpenninearts.org.uk



Education



COURSES FOR TEACHERS

"WHAT IS SCULPTURE?"
with Pat Southern

Friday 14 November 9.30–3.30 pm
Pendle Heritage Centre
Barrowford, Nelson

Artist Pat Southern will be repeating this successful course from last year's programme which addresses the QCA Scheme of Work Unit 1c. This will be an active course focusing on the practicalities of delivering this National Curriculum Module in the classroom.

Cost: £80 including refreshments and lunch

EXPLORING YOUR ENVIRONMENT THROUGH THE ARTS
with Gordon MacLellan

Friday 5 December 9.30–3.30 pm
Pendle Heritage Centre
Barrowford, Nelson

We are very fortunate to have secured the services of an environmental artist with an international reputation to lead this one day course for primary school teachers and other professionals who work with children.

Cost: £80 inclusive of refreshments and lunch

INTRODUCING AND DEVELOPING DANCE IN THE PRIMARY SCHOOL
With Katy Dimmock

Tuesday 2 December 9.30–3.30 pm
Burnley Mechanics Theatre
Manchester Road, Burnley

Katy Dimmock, Director of the Manchester based 'Touchdown Dance Company' will lead this one day course for teachers. The course will explore how to create movement from a theme; how to work at different spatial levels; improvisation; use of sounds and music.

Cost: £80 inclusive of refreshments and lunch



'LIVE MUSIC NOW'
concert for special schools

Wednesday 2 December at 10 am
Bacup Leisure Hall

We are delighted to continue our support for the 'Live Music Now' series of concerts for Special Schools.



WORKING IN WYCOLLER

Throughout November

Four Pendle schools will be working with environmental artist Gordon MacLellan in the Wycoller Country Park during November. Each school will spend a day in the Park followed by a workshop day in school. The children's work will be exhibited in a touring exhibition which will be housed at the Pendle Heritage Centre in January, at Mid Pennine Gallery in February and at the Aisled Barn in the Wycoller Country Park in March.

Dhamak Collective

East Lancashire's own multicultural festival band mixes traditional dhol drumming with dj beats, jazz breaks and rap. The Dhamak Collective were a big hit this summer at local melas and carnivals as well as on tour further afield.

Now Dhamak is in demand for winter gigs both local and across the region. The band meets on a weekly basis and new recruits are always welcome if you are willing to make a commitment and put in the hard work honing those beats.



REHEARSAL SESSIONS

Every Monday night at Stonyholme and Daneshouse Youth & Community Centre.

Open Dhol drumming session
7-8.30pm

Closed practice session 9-10pm



PERFORMANCES

Dhamak Collective will be appearing at:

November

7th 7.30 STAGE ONE - THE PLATFORM, Morecambe. Bands and DJ's launch WHAT NOW

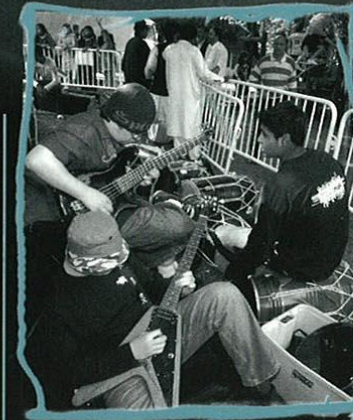
8th GATESHEAD

14th 7.30 STAGE ONE - MUNICIPAL HALL, Colne. Bands and DJ's launch WHAT NOW

December

5th BURNLEY MECHANICS supporting LEGACY

6th FUSE event at ACCRINGTON TOWN HALL



210

Call Naushad or Nick on 01282 421986 to find out more.

Dhamak is a partnership project with More Music in Morecambe, and was made possible by generous support from the National Foundation for Youth Music.

Photographs taken by Nigel Hillier at this Summer's Melas and Festivals.

Mid Pennine Arts Membership

We are currently updating and renewing our membership package. In the meantime, here are some of the benefits that you or your organisation could receive by joining Mid Pennine Arts.

Benefits to Community Groups and Local Organisations:

- ★ MPA is currently investing in new equipment for hire.
- ★ Access to MPA 'promotion network' distributing publicity material across East Lancashire.
- ★ Advertising opportunities in our new style brochure.
- ★ Your event listed in our 'Programme at a Glance' calendar.

- ★ Advice, support and partnership in promoting your own projects.
- ★ Ticket printing service. Get professional tickets printed for your event.

Benefits to Individuals:

- ★ Free season brochure mailed to your home.
- ★ Additional regular mailings with in depth information on aspects of our programming.
- ★ Personal invitations to join other members and MPA staff at private views, exhibition openings, where you can meet the artist, and other special events.

If there's anything you'd like to see MPA offering as part of our membership package do get in touch. Help us to give you the best possible service.

Write to Brenda Weller at
MID PENNINE ARTS,
Freepost BU 874, Yorke Street,
Burnley, Lancashire, BB11 1HD or
email info@midpenninearts.org.uk

Many thanks



mid pennine gallery



21

Information

BOOKING TICKETS

In person:

Call in at Mid Pennine Gallery, Yorke St. Open Monday to Saturday 10am–5pm, Tuesday open 10am–1pm.

By phone: (01282) 421986

By fax: (01282) 429513

All Access, Mastercard and Visa cards all accepted.

By post:

Write to us at FREEPOST BU 874 at the address below. Please make cheques payable to MPA.

Yorke Street, Burnley, Lancs BB11 1HD
tel: 01282 421986 fax: 01282 429513
email: info@midpenninearts.org.uk

Reservations:

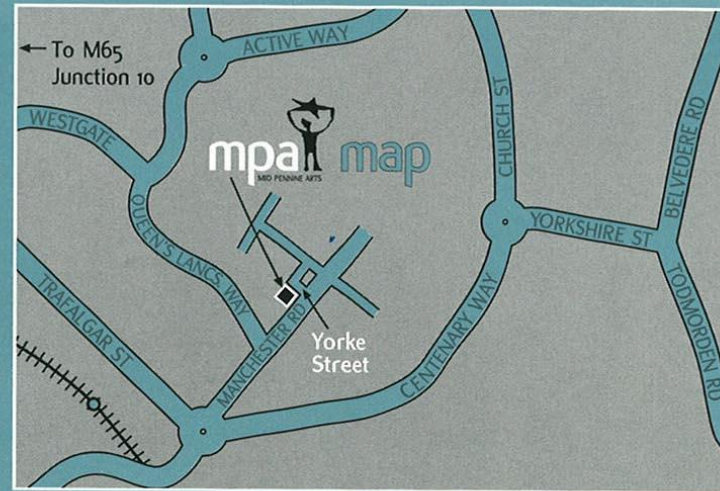
Reservations will be held for three days.

Concessions:

Concessionary rates are available to our MEMBERS, those in full time education, unemployed people, senior citizens and registered disabled people.

Group Bookings:

Buy ten tickets and receive the eleventh free.



Brenda Weller
Mid Pennine Arts
FREEPOST BU874
Yorke Street
Burnley
BB11 1HD



If you would like further information about Mid Pennine Arts events, workshops and opportunities please take a moment to fill in this form and post it back to us.

NAME

ADDRESS

POSTCODE

TELEPHONE

MOBILE PHONE

FAX

EMAIL

AGE (please tick) under 16 16 – 18 19 – 24 25 – 34
 35 – 44 45 – 54 55 – 64 65+

DO YOU HAVE ANY CHILDREN UNDER 16? IF SO, HOW OLD ARE THEY?:

under 5 5 – 7 8 – 10 11 – 13 14 – 16

DO YOU FALL INTO ANY OF THE FOLLOWING GROUPS:

- Student Unemployed
 arts administration or education worker with non profit organisation
 practising artist or craftsman – Hobby
 practising artist or craftsman – Professional

HOW WOULD YOU DESCRIBE YOUR CULTURAL IDENTITY? (please tick)

- Asian British Bangladeshi Indian Pakistani
 Other Asian Black British African Caribbean
 Other Black Chinese British White British Mixed heritage
 Other (please specify)

WHICH ART FORMS DO YOU HAVE PARTICULAR INTEREST IN?

- Visual Arts Music Classical music Literature
 Children's events Crafts Theatre & performance
 Arts in Asian Communities Digital media and film
 Environmental arts Arts workshops & training
 Architecture & design Schools/College programme

WOULD YOU LIKE YOUR TO JOIN/ RECEIVE:

- Mid Pennine Arts Mailing List Mid Pennine Arts E-mailing List
 Mid Pennine Arts membership information pack
 Mid Pennine Arts Volunteer information pack
 Information from other arts organisations

WHERE DID YOU PICK UP THIS BROCHURE?

If you are interested in our work in a professional capacity please fill in the following:

POSITION/JOB TITLE

ORGANISATION

