



ANNUAL REPORT AND ACCOUNTS

MID-PENNININE ARTS 1990/91

2 A WELCOME FROM THE CHAIRMAN

Welcome to the Association's Annual Report for 1990-91. This year Mid-Pennine Arts reaches its 25th birthday - a time to celebrate, to look back on a quarter century of achievement, and to look forward to the new challenges ahead. Here, though, we celebrate the past twelve months.

A year that began with uncertainty has proved remarkably successful, and we end it with optimism and excitement. Music, drama, exhibitions, projects, festivals, galas, ... performance and participation from Oswaldtwistle to Walsden, from Earby to Bacup. The following pages try to capture a year of MPA activity, and the people that make it all possible. Welcome to Mid-Pennine Arts.

At a time of rapid change in all public life, Mid-Pennine has been through a year of transition. What does not change, though, is that twelve months in the life of MPA represents an enormous body of work. It involves a host of people, both agencies and individuals, in promoting the arts. MPA is above all about partnership, and we hope this report gives an idea of the range of people who have contributed. In 1990-91, more than ever, MPA's work has involved an elaborate network of funding bodies, local authorities, community groups, social agencies, voluntary committees, local artists, local promoters and many individual volunteers. All have worked together to provide access to the arts for our local communities. Our thanks go to them all.

Our year of changes began without a Director in post. Previous Director Charles Sanders moved on at the start of the year to the new Forum 28 Centre in Barrow. For the next four months, a busy programme was sustained by the rest of the staff team, with close support from the Honorary Secretary and Honorary Treasurer. It is to the great credit of the team that not only was normal service maintained, but some notable successes were achieved. Congratulations and grateful thanks are due to all concerned.

New Director Nick Hunt arrived in August, and we are delighted to welcome him to the team. He is, of course, now well established in the post and has already made his mark on the organisation.

During the interim we also welcomed the Liverpool consultancy team of Practical Arts, who conducted a strategic review of MPA's operation and future role. The review was presented in August and has provided invaluable stimulus for subsequent work in the way that only a detached, objective view can. Particular thanks must go to North West Arts and the Lancashire County Arts Unit for making the review possible, and also to Practical Arts for conducting a positive and invigorating study.

All arts organisations are moving into the nineties with a new concern for strategic planning. Business plans are now a standard requirement of funding bodies. Planning, though, is a vital tool for economic survival and for clarity of purpose. For MPA, the winter months involved as much arts activity as ever, as the following pages will demonstrate. Behind the scenes, however, the period was dominated by the need to develop a three year plan in short order. A Planning Group drawn from the Executive Committee came together in November. Working closely with staff, they succeeded in completing a very substantial document by the March '91 deadline. Many thanks to those concerned. 'The Next Twenty Five Years' is the upbeat title, but the Plan details development over the period 1991-94. Copies are available on request from the Director.

As we move into a new year, MPA has a clearer idea of its purpose and priorities. As we said though, MPA is about partnership, and above all with the local councils that sustain and host our work. Our thanks lastly go to them and the other funding bodies that make Mid-Pennine Arts possible. The plan is a flexible framework. We hope it will assist them in refining their own policies, and in agreeing future priorities with MPA. We look forward to working more closely with our boroughs towards our shared aims - providing access for all to professional arts, and arts that are relevant to all our communities. That's what we are here for.



Councillor L. Harrison

Chairman



Building the Blues at The Gallery Downstairs

PROFESSIONAL ARTS

Access to professional arts is vital to the life of our communities. We bring into the Mid-Pennine area the best available national and international performers and visual artists.

This policy brings performers like Manchester Camerata, the leading chamber orchestra in the North, to the Colne Orchestral Series; London Opera Players to Accrington with singing of high calibre for Hyndburn Festival; leading national fringe companies like Red Shift, Compass and Trestle to small venues around our towns; Qawali and Bhangra music from Asian musicians of national repute.

The Gallery Downstairs shows exhibitions touring from the national museums and elsewhere; brings together the best contemporary crafts from around the country and the region; assembles exhibitions of artists from around the North West. Working artists are a vital resource and we work to support them.

In summer we add professional artists to community events. Through galas and fairs large and small, we work with local committees to match professional actors, musicians and circus artists to local celebrations.

Professional artists are best used when they share their skills with amateur practitioners. Schools residencies, workshops, special concerts, the jazz summer school and projects for special needs groups - with all these we aim to add inspiration to perspiration.

LOCAL ARTS

MPA delivers the arts to local communities large and small. Nowadays, more people shop at supermarkets, but they still need their corner shop. In the arts, more people travel to big theatres, opera houses, multiplex cinemas ... but their own community needs the arts, and MPA delivers, locally.

Local arts are vital:

- **For community development:** MPA works with community centres and schools to provide family shows, workshops and exhibitions in places where people meet ...
- **For tourism:** 17% of Christmas crafts visitors came from outside the area. For the Camerata in January it was 24%.
- **For economic regeneration:** Towns with arts and entertainment attract incoming investment.
- **For people without cars:** MPA promotes all around our 200 square miles, urban and rural. What we cannot deliver we take people to. Our excursions to major city venues offer a stress-free alternative to getting yourself there.

Local arts must involve local people. More and more, MPA works by supporting the work of local promoters: borough councils, youth and community centres, gala committees, local festivals, voluntary organisations and devoted individuals. MPA provides resources, expertise, equipment, training, whatever. Local promoters ensure that the arts are rooted in the community.

Partnerships like this have made possible successful promotions with, for example, Pakistan Welfare Association (Nelson); Accrington Lions, Rossendale Tourism Department, Burnley Multicultural Festival, Pendle Leisure Services, Todmorden Greenpeace, Hyndburn Festival and many more.

ARTS FOR ALL

Anyone can enjoy the arts. MPA works to bring access to arts activities to all sections of our community. We positively discriminate to ensure that our programme reaches those people least likely to benefit from our mainstream events.

We tour to senior citizens' centres and work regularly with youth clubs. We devise activities and projects for special



Pop-up Theatre: Escape

needs groups. We believe in catching them young, so we offer as much arts activity as possible to schools. We present family shows at places and times that suit parents. Our summer festival events reach thousands of people who might not normally go to a theatre or concert.

People of Asian origin now represent a large slice of our communities, but provision of Asian arts is still sparse. So MPA's co-promotions with the PWA, generating a successful programme of Asian arts events in Nelson and elsewhere, are particularly important. Asian-orientated arts, traditional and modern, throughout the Mid-Pennine area, will be a high priority in the future.

LOOKING AHEAD

This page tries to explain how MPA operates, and why. The following pages give a picture of what MPA produces over the course of a year. There is an enormous amount of energy and excitement represented here. We hope it all makes you want to find out more about Mid-Pennine Arts. Looking back, the year includes my first eight months as Director. They have been interesting times and exciting ones. Thank you to a brilliant staff team and to everyone who has made me so welcome.

All through these pages, we are also looking forward. Looking at what is most important, what we want to highlight in the future, and how we can best achieve it. Most important are our users, and we want to hear from you about how we can serve you best.

Thank you for supporting Mid-Pennine Arts. We look forward to seeing you soon.

Nick Hunt

IAW – In Association With
CAP – Capacity Audience
JP – Joint Promotion

CLASSICAL MUSIC

Amateur music-making is a strong tradition in the Mid-Pennine area. MPA aims to complement and fertilise this tradition by importing the best available professional musicians. Partnership with Pendle Leisure Services enables us to bring the North's leading chamber orchestra to the attractive setting of Colne Municipal Hall. Camerata's second season attracted the best audiences yet. We look forward to a third series next winter with great excitement.

27.5.90	NORTHERN BAROQUE ORCHESTRA - A Musical Evening with the Bach Family - Civic Hall, Whitworth	
	JP - Whitworth Town Council (Whitworth Festival)	75
14.10.90	LANCASHIRE CHAMBER ORCHESTRA	
	Town Hall, Todmorden	
	JP - Todmorden Town Council	71
20.11.90	LEO WITOSZYNSKYJ - Guitar Recital, Haworth Art Gallery, Accrington	45
	MANCHESTER CAMERATA	
	Municipal Hall, Colne	
	JP - Pendle Borough Council	
8.11.90		225
6.12.90		314
7.2.91		150
7.3.91		221
14.12.90	TAPESTRY OF MUSIC - To Drive the Winter's Cold Away	
	Pendle Heritage Centre, Barrowford	CAP 64

OPERA

6.6.90	LONDON OPERA PLAYERS - Madam Butterfly	
	Civic Theatre, Oswaldtwistle	
	IAW - Hyndburn Festival	227
30.8.90	TRIAL BY JURY - FROM SCRATCH	
	Municipal Hall, Colne	
	JP - Pendle Borough Council	114

JAZZ

Jazz in a variety of styles, from mainstream to very contemporary, ranged from intimate soirées to larger concert settings. The very successful evening with old maestro Kenny Baker and the NJO fulfilled a particular MPA aim of bringing amateur and professional together. The same principle fuels the Jazz Week we co-promote with Burnley Mechanics (see below), and will be a keystone of future plans in both Hyndburn and Todmorden.

4.4.90	GARY COX AND THE STAN BARKER TRIO	
	White Hart Hotel, Todmorden	37
3.8.90	JAZZ COLLEGE CONCERT	
	Burnley Mechanics	
	IAW - Burnley Mechanics	120
14.10.90	KENNY BAKER WITH NORTHERN JAZZ ORCHESTRA	
	Astoria Ballroom, Rawtenstall	177
28.11.90	GYPSY JAZZ AND SWING QUARTET	
	White Hart Hotel, Todmorden	28

17.2.91	MIXED MEDIA	
	White Hart Hotel, Todmorden	
	IAW - White Hart	33
22.3.91	NORMA WINSTONE QUARTET	
	Civic Hall, Barrowford	
	IAW - Jazz North West	48

FOLK/WORLD MUSIC

2.6.90	INNER SENSE PERCUSSION ORCHESTRA & THE MISSING BRAZILIANS	
	Town Hall, Accrington	
	IAW - Hyndburn Festival	51



Inner Sense Percussion Orchestra

18.10.90	JOHN CAREY & MAIREAD O'DONNELL	
	Dugdale Arms, Burnley	
	IAW - Burnley Folk Club	52

ASIAN MUSIC

MPA continues to develop a very fruitful partnership with the Pakistan Welfare Association in Nelson. Music events formed the backbone of a strong programme - both traditional Asian culture and the modern mix of a younger generation. Our experience with PWA enabled us to extend to further Asian Music events in Hyndburn and Burnley. Response overall has been very pleasing, and the appointment of PWA's first Arts Development Worker shows the way ahead. For MPA, supporting an expanding programme of Asian community events will be a priority in the year ahead.

5.5.90	ABDUL MAHOUMOAD NISHTAR - Eid Milan Festival	
	Unity Hall, Vernon Street, Nelson	
	JP - Pakistan Welfare Association (Nelson)	257
3.6.90	LOHAR GROUP - Asian Folk Music	
	Town Hall, Accrington	
	IAW - Hyndburn Festival	160
9.6.90	HOLLÉ HOLLÉ - Bhangra	
	Town Hall, Accrington	
	IAW - Hyndburn Festival	244
30.6.90	RAZA AND PARTY - Bhangra	
	Unity Hall, Vernon Street, Nelson	
	JP - Pakistan Welfare Association (Nelson)	123
21.7.90	NAAT - JAMIAT E HASSAN	
	Unity Hall, Vernon Street, Nelson	
	JP - Pakistan Welfare Association (Nelson)	182
24.10.90	NASEEB GROUP - Bhangra	
	Barden School, Burnley	
	IAW - Burnley Peace Committee	
	as part of One World Week	63
3.3.91	ASIAN SHOWCASE - Music and Dance	
	Town Hall, Accrington	
	IAW - Manchester International Arts	113



Mixed Media

OUTDOOR ENTERTAINMENTS

At least 50,000 people attended these events - neighbourhood summer shows of all shapes and sizes. Borough departments, gala committees, community groups and voluntary societies all look to MPA to inject an element of professional performance into their event. This is MPA doing what it does best - supporting local people running their own show. It also enables us to reach a large public who might not go to theatres or concerts. We assume at least 100 people watched each entertainment, adding an understated 2,200 to our statistics.

- 7.5.90 CIRCUS SENSIBLE
Irwell Valley Adventure Day, Helmshore Textile Museum
JP - Rossendale Borough Council
- 7.5.90 SAMANDE JUGGLERS
Burnley May Day Event, Towneley Park, Burnley
IAW - Burnley May Day Committee
- SNAPSHOT
26.5.90 Todmorden Carnival, Centre Vale Park
IAW - Todmorden Carnival Committee
- 22.6.90 Kiddies Corner - Bacup Carnival, Town Centre.
JP - Rossendale Borough Council.
- 5.8.90 Barrowford Park
IAW - Pendle Borough Council
- 12.8.90 Letcliffe Park, Barnoldswick
IAW - Pendle Borough Council
- 26.5.90 RED HERRINGS
Todmorden Carnival, Centre Vale Park.
IAW - Todmorden Carnival Committee
- 2.6.90 INNER SENSE PERCUSSION ORCHESTRA
Broadway, Accrington.
IAW - Hyndburn Festival
- ROSSENDALE COUNTRY FAIR
Sports Centre, Haslingden
JP - Rossendale Country Fair
- 9.6.90 EXPANDING SUITCASE - Street Theatre
BOZO & ZIZI THE CLOWNS
- 10.6.90 MOON DE LUNE - Busking Duo
BOZO & ZIZI THE CLOWNS
FACE PACK - Face Painting
- 21.6.90 THE GRINNIGOGS
Bacup Carnival, Town Centre, Bacup
JP - Rossendale Borough Council

- 23.6.90 THE PEACE ARTISTES
Bacup Carnival, Town Centre, Bacup
JP - Rossendale Borough Council
- 22.7.90 THE CHIPOLATAS
Victoria Park, Nelson
IAW - Pendle Borough Council
- JUKALO THE JUGGLER
29.7.90 Sough Park, Earby
IAW - Pendle Borough Council
- 19.8.90 Ballgrove Picnic Park, Trawden
IAW - Pendle Borough Council
- AVANTI DISPLAY - The Fountain Machine
4.8.90 "Day on the Green", Centre Vale Park, Todmorden
8.9.90 Haslingden Street Fair, Streets of Haslingden
- 8.9.90 MOON DE LUNE - Busking Duo
Haslingden Street Fair, Streets of Haslingden
JP - Rossendale Borough Council
- MIMIKA THEATRE COMPANY
25.8.90 Walsden Carnival, St Peters Infant School,
Hollins Road, Walsden, Todmorden
- 27.8.90 St Monday Festival, Weavers' Triangle
Visitor Centre, Burnley

CABARET/MUSIC HALL

- 8.6.90 ALTERNATIVE CABARET: HENRY NORMAL,
SUITCASE CIRCUS & CLAIRE MOONEY
New Era Youth Centre, Accrington
IAW - Hyndburn Festival & New Era Youth Centre 45
- 11.10.90 COSMOTHEKA & ANDREW FRANK - Spirit of the Halls
Town Hall, Todmorden
IAW - Todmorden Town Council 33

THEATRE

At a difficult time for theatre nationally, MPA continued to present the best small-scale touring companies in venues across our boroughs. Snap, a brace of Shakespeare and Manchester's own Lip Service drew large, appreciative audiences, but other outstanding fringe companies were undersubscribed. The fringe needs sustaining, but MPA will rationalise its theatre programme over the coming year.

- 3.4.90 COMMONWEAL THEATRE COMPANY - Julius Caesar
Rhyddings High School, Oswaldtwistle 66
- 6.4.90 LIP SERVICE - Margaret III, Parts Two and Three
Silverman Hall, Nelson 75
- 10.4.90 THE SNARLING BEASTIES - Valentino
Public Hall, Haslingden 39
- 27.4.90 PARKER AND KLEIN - Blood on the Lino
Silverman Hall, Nelson 36
- 1.11.90 MAJOR ROAD THEATRE COMPANY - Four Note Opera
Silverman Hall, Nelson 15
- 15.11.90 SNAP THEATRE COMPANY - Room with a View
Public Hall, Haslingden 61
- 21.11.90 TRESTLE THEATRE CO - Ties That Bind
Civic Theatre, Oswaldtwistle 32
- 23.11.90 SENSIBLE FOOTWEAR - Side Saddle
Sprintman Hotel, Rawtenstall
IAW - Sprintman Hotel 32

29.11.90	RED SHIFT THEATRE COMPANY - Lulu Public Hall, Haslingden	33
11.12.90	TALKING PICTURES Workshop 10am Performance - Trouble in Paradise 7.30pm St Christophers High School, Accrington IAW - St Christophers School	5 20
24.1.91	COMPASS THEATRE COMPANY - Merchant of Venice Civic Theatre, Oswaldtwistle	109
30.1.91	EX ANIMUS - Ecocide Alder Grange, Rawtenstall Workshop 2.00pm Performance 7.30pm	18 17
11.3.91	BLACK SWAN - Weaving Rainbows Moorhead High School, Queens Road West, Accrington Workshops Performance 7.30pm	35 50
14.3.91	TRANSFER THEATRE - The Time of Her Life New Era Youth Centre, Accrington	38



Parker & Klein



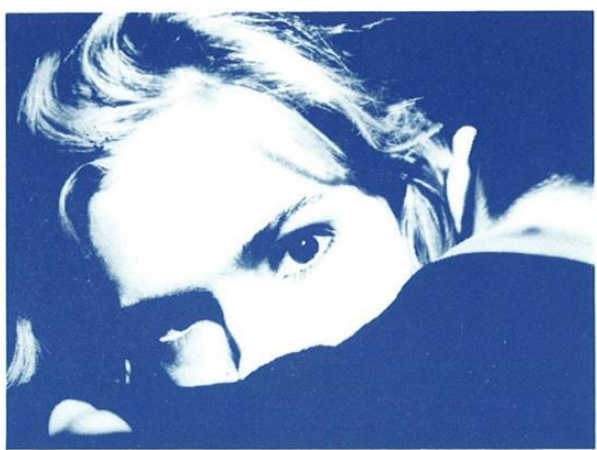
Trestle Theatre Co

CHILDREN'S THEATRE

"Pop-Up's presentation was one of the best I've seen. Their original ideas, the dramatic effects and the professionalism of the whole show was appreciated by both staff and children."
John Clegg, Headmaster
Constable Lee Primary, Rawtenstall

A year of strong shows, volatile audiences and reform-bound schools ended with record numbers for the logistical nightmare of Todmorden Council's monster Schools Day Out. The Funsize pocket pantomime tour found promising venues for entertaining children and their adults. Coming soon - more family shows touring to community settings.

26.5.90	SNAPSHOT - The Jellyvision Show Civic Hall, Whitworth, JP - Whitworth Town Council (Whitworth Festival)	97
2.6.90	SNAPSHOT - The Jellyvision Show Town Hall, Accrington, am Mercer Hall Leisure Centre, Great Harwood, pm IAW - Hyndburn Festival	17 20
2.6.90	MIMIKA THEATRE COMPANY SS Peter & Pauls School, Rishton, am Town Hall, Accrington, pm IAW - Hyndburn Festival	11 25
9.6.90	SAMANDE JUGGLERS Civic Hall, Clayton-le-Moors, am Town Hall, Accrington, pm IAW - Hyndburn Festival	25 27
9.6.90	FREEHAND THEATRE - Finding Time Town Hall, Accrington, am Civic Theatre, Oswaldtwistle, pm IAW - Hyndburn Festival	19 31
22.11.90	POP-UP THEATRE COMPANY - Escape Leisure Hall, Bacup, am Civic Theatre, Nelson, pm	78 55
	FUNSIZE THEATRE COMPANY - Ding Dong Bell	
15.1.91	New Road Community Centre, Earby	65
16.1.91	Great Harwood Youth & Community Centre	120
17.1.91	Padiham Youth Centre	9
18.1.91	Alder Grange, Rawtenstall	56
19.1.91	Vale Community Centre, Cornholme	84
	OPEN HAND	
11.3.91	Hippodrome Theatre, Todmorden	393
12.3.91	JP - Todmorden Town Council	361



Red Shift Theatre Company - Lulu



Open Hand Theatre Co.

PUPPETS

- 24.6.90 KAVI PUPPETS - Krishnaleela
4th Cornholme Midsummer Festival, Vale Community
Centre, Burnley Road, Cornholme
Puppet Workshop, 2pm 27
Performance, 7.30pm 93
JP - Cornholme Festival Committee

DANCE

- 9.5.90 YOLANDE SNAITH & KATHY CRICK - Germs
Rhyddings High School, Oswaldtwistle 37
- 5.6.90 DANCE EXTRAVAGANZA
Civic Theatre, Oswaldtwistle (Hyndburn Festival)
IAW - New Era Youth Centre 90
- 7.6.90 NORTHERN DANCE COMPANY
Civic Theatre, Oswaldtwistle
Workshop 11am 6
Performance 7.30pm 51
IAW - Hyndburn Festival
- 24.6.90 KAVI PUPPETS - Krishnaleela
Vale Community Centre, Burnley Road, Cornholme
Dance Workshop 2pm 10
JP - Cornholme Festival Committee
- 8.3.91 THIRD ESTATE MUSIC & DANCE - Burning Issue
Haslingden Public Hall 17

EXCURSIONS

Access to the major centres of the arts does not require access to a car - MPA excursions offer a comfortable, friendly, door-to-door alternative. This year, three coachloads enjoyed a stress-free day trip, and next year we aim to expand this service.

- 25.4.90 OPERA NORTH - Don Pasquale
Grand Theatre, Leeds 33
- 9.8.90 LADY LEVER ART GALLERY
Port Sunlight Village, Bebington, Wirral CAP34
- 25.11.90 HALLÉ ORCHESTRA - Free Trade Hall, Manchester 39

POETRY

- 11.8.90 QARI NAZAR HUSSAIN - Recital night of Quarat Verses,
Unity Hall, Vernon Street, Nelson
JP - Pakistan Welfare Association (Nelson) 68
- 1.10.90 MANCHESTER POETS
Sparrowhawk Hotel, Burnley
IAW - Pennine Ink Writers Group 20

FILM

- 5.4.90 VALENTINO - Directed by Ken Russell
Public Hall, Haslingden 23
- 20.11.90 THE LAST OF THE GREAT VICTORIANS
Nelson & Colne College, Colne
IAW - Colne Art Group 30

SPECIAL PROJECTS

- May 90 ANIMATION WORKSHOPS
Video produced by three Burnley Schools
IAW - CRS and Jackdaw Media
- 30.7.-
3.8.90 MAINSTREAM JAZZ WORKSHOP WEEK 21
- 4.8.-
5.8.90 CONTEMPORARY JAZZ WORKSHOP WEEKEND 24
Habergham 6th Form Centre, Burnley
IAW - Burnley Mechanics, Lancashire County Council,
with financial assistance from Musicians' Union
and North West Arts

SENIOR CITIZENS' TOUR

Some of the most responsive, animated and downright rowdy audiences of the year were encountered on this tour of Snapshot's music/comedy show inspired by traditional music hall. Delivering live entertainment direct to senior citizens is a regular MPA commitment. We look forward to returning to these very hospitable venues.

- SNAPSHOT - A Funny Turn
- 25.2.91 Peel Court Home for the Elderly, Accrington 44
26.2.91 Winberry View Home for the Elderly, Rawtenstall 56
26.2.91 Acorn Lodge Home for the Elderly, Accrington 43
27.2.91 Railway Street Aged Persons Social Centre, Nelson 54
27.2.91 Olive House Home for the Elderly, Bacup 21
28.2.91 Temple Street Multi Purpose Day Centre, Burnley 52
28.2.91 Walton Lane Aged Persons, Nelson 65

WORKSHOPS

- 9.4.90 INFLATABLE SAFETY WORKSHOP
Central Methodist Hall, Burnley 38
- 9.10.90 THEATRE LIGHTING WORKSHOP - Basic Lighting
The Gallery Downstairs, Burnley 14
- 22.1.91 THEATRE LIGHTING WORKSHOP - 'Use our
lights safely', The Gallery Downstairs, Burnley 10
- 11.2.91 THEATRE LIGHTING WORKSHOP - Beyond Basics
Central Methodist Hall, Burnley 11
- 21.3.91 INFLATABLE SAFETY WORKSHOP
Central Methodist Hall, Burnley 24

MISCELLANEOUS

- 23.6.90 ACCRINGTON & DISTRICT BONSAI SOCIETY SHOW
Town Hall, Accrington
IAW - Accrington & District Bonsai Society 204

THE GALLERY DOWNSTAIRS

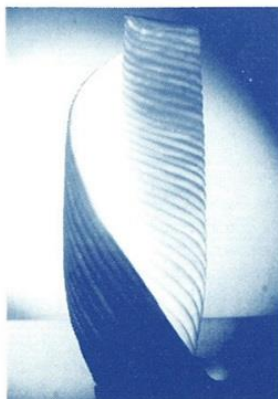
14,911 people visited The Gallery Downstairs during this year, 53% from Burnley and 47% from beyond the borough. MPA's base in the Mechanics building is an attractive, airy, informal space that changes dramatically from month to month with each new exhibition, covering a wide range of media. Outstanding contemporary painting was represented by the massive oils of Peter Edwards from the National Portrait Gallery, and the vivid colour of *The Subjective City*, an exhibition shared with Towneley Hall. CRAG gave a platform to professional artists from Calderdale, and *Shining Lights* to the region's young designers. The Hogarth Puppets provided surprise and delight. The strong thread of contemporary crafts was sustained by the regular showcase and jewellery features. 2,793 people attended the regular Christmas Crafts Show with its vast variety of original design. There is an alternative to the chain stores!

- 15.3.- STRANDS & ECHOES
11.4.90 Carvings, paintings and prints by Anthony Lysycia
DOMESTIC DISTRACTIONS - ceramics
Diana Gill, Jill Hancock, Andy Lloyd, Jane Staniland
Jewellery: LAURA LEE/LIDIA DANUTA FERGUSON 1011
- 12.4.- LIVING BLUES
16.4.90 Photography and blues memorabilia 1017
- 21.4.- TREASURE GARDENS
29.5.90 Artists working on the theme of gardens
FAN-TASTIC - Fans by Juliet Helen Walker
Jewellery: JOAN DOHERTY/CAROLINE TAYLOR 1291



Bulgarian Puppet: The Hogarth Collection

- 1.6.- THE HOGARTH COLLECTION OF PUPPETS &
26.6.90 MARIONETTES
PIECES OF EIGHT - Gold & Silver by
Jadwiga Billewicz, Paulette Bliss, Geoffrey Callis,
Elizabeth Clay, Tessa Garside, Sue Henning,
Julia Manning and Phillipa Merriman
Jewellery: ALISON EVANS/JANE SUTTON 1119
- 30.6.- FACE TO FACE
31.7.90 The head as portrayed in art by Gary Waters and
Alan Jenkins
TEXTILES FOR INTERIORS - Jan Farthing,
Diane Huxley, Janet Milner and Penny Wools
Jewellery: MARLENE McKIBBIN/BRIDGET WHEATLEY 801



Margaret O'Rorke lamp

- 4.8.- SHINING LIGHTS IN THE NORTH WEST
3.9.90 Exhibition featuring some of the best young crafts
people in the North West
SHINING LIGHTS (Glass) - Deana McDonagh/Gaynor
Ringland
Jewellery: LOUISE ROBERTSON/JANE HOLMES 1205
- 6.9.- CONTEMPORARY POETS
3.10.90 Portraits by Peter Edwards
LETTERING - Calligraphy
Duncan Linklater, Sarah Moore, Alison Urwick
and Ron Walker
Jewellery: JENNY TURTILL/WALLY GILBERT 1034
- 6.10.- CRAG
6.11.90 An exhibition of paintings and sculptures by
Calder Rural Artists Group
GLOWING IMAGES - Porcelain lamps by
Margaret O'Rorke
Jewellery: LIZ OAKLEY/ROSALEEN ROCHE 1133
- 10.11.- CHRISTMAS CRAFTS
22.12.90 2793
- 10.1.- WOVEN RESPONSES
12.2.91 An exhibition of tapestry weaving by Shirley Ross
and Ivor Westwood
SCULPTURED PORTRAITS - Sam Tonkiss
Jewellery: VICKY AMBERY SMITH/GAIL KLEVAN 1161
- 16.2.- THE SUBJECTIVE CITY
19.3.91 Touring exhibition from Cleveland Gallery
JEHANE DU LUART - Wool jackets
Jewellery: HOLLY BELSHER/KATE GREAVES 1133
- 23.3.- BUILDING THE BLUES
16.4.91 A profile of Paul Oliver
WORKS OF NOTE - Bettina Mitchell/Silks
Joon-Rose Davies/Steel sculptures
Jewellery: GEOFF ROBERTS/CLARA VICHI 1213



Lucile Montague: City Men, from The Subjective City

WORKSHOPS IN THE GALLERY DOWNSTAIRS

- 19.5.90 FLOWER ARRANGING DEMO
By members of Burnley Flower Club 61
- 11.8.90 CRAFT DEMONSTRATIONS
Jean Ellison - weaving
Alison Dunkerley - papier mache
Louise Robertson - jewellery 137
- 10.10.90 LINO CUTTING WORKSHOPS - Mike Pemsel 11
17.10.90 11
- 19.1.91 SHIRLEY ROSS - weaving demonstrations 143

VISUAL ARTS OUT & ABOUT

From a strong base at the Gallery, MPA works more and more to take the visual arts out around our communities. Over 4,300 people flocked to the Asian Crafts exhibition, an established feature of MPA's programme of co-promotions with the Pakistan Welfare Association. Also in Nelson, we welcomed the reopening of the Pendle Arts Gallery, achieved by a volunteer committee. MPA is keen to support their work and to complement their programme. The evocative photos of the Forder collection were a popular first contribution.

MPA regularly receives requests for advice and support for visual arts projects. This year was no exception. These two projects are but a hint of much work behind the scenes. The year ended with the launch of a radical scheme to take art out of the gallery and into people's lives. Wallspace offers small exhibitions on loan to offices, factories, cafes and anywhere people work or meet. Launched with funds from North West Arts and the Arts Council, it will be available through the coming year. It's absolutely free. You just have to be an MPA member...



Wallspace - Sheila Tilmouth

23.8.- ASIAN CRAFTS EXHIBITION & STREET MARKET
29.8.90 Civic Theatre, Stanley Street, Nelson
IAW - Pakistan Welfare Association (Nelson) 4300

1.10.- HABERGHAM FESTIVAL
4.11.90 Lino Prints by Mike Pemsel
Clocks by Caroline Jell

1-28.2.91 THE HILL SHEPHERD - Photography by David & Eliza Forder
Pendle Arts Gallery

From MURAL PROJECT: Whitewell Bottom Community Centre
February Manchester artist Brian Phillips working with Youth Club members and Community Centre users.

From WALLSPACE
March Mini-exhibition loan scheme, delivering original art to non-arts venues.
IAW - North West Arts/ACGB



Artists in Residence - Susan Light

ARTISTS IN RESIDENCE

"Thank you for the workshops we enjoyed with Anthony Lysycia. Some students found it quite inspiring and it has influenced their way of working already. I am sure that the experience of talking to and working with Anthony made the visit to the Gallery far more meaningful than if we had just seen the work alone."

Susan Hollingsworth
Head of Art and Design,
Clitheroe Royal Grammar School.

2.4.- ANTHONY LYSYCIA
6.4.90 For Secondary Schools

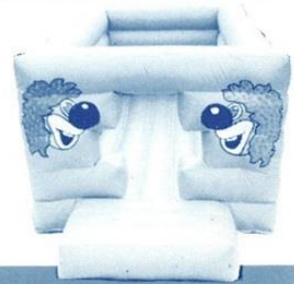
4.3.- SUSAN LIGHT
8.3.91 For Junior Schools

EQUIPMENT LOANS/HIRE

240 loans and hires were administered this year, and provision of equipment to community groups is a substantial addition to MPA's service. Most popular are the range of inflatables, centrepiece of so many family events. If just 50 children bounced on each one, that is a further 5,450 satisfied users we have not yet added to our statistics for the year...

Inflatables	109	Musical Instruments	6
Lighting Equipment	35	Display Boards	9
Follow Spot	11	Exhibition Equipment	5
Smoke Machine	39	Exhibitions from stock	2
Dance Floor	2	Scaffolding	1
Rostra	8	Miscellaneous	13

As the year closes, we are adding a major new item to our range. LEAP, the Lancashire Education Arts Panel, have furnished us with two sets of lightweight portable theatre lighting. These are available at minimal charge to all LEA schools in East Lancashire. Please ring MPA on 0282 21986 for details.



Fun Inflatables

SCHOOLS

MPA offers teachers and school parties a variety of ways of participating in its programme of professional arts: performances in and out of school time, performing arts workshops, demonstrations and workshops in visual arts and crafts, residences with artists and Gallery visits. Thursday mornings in the Gallery are set aside for the exclusive use of schools parties by appointment. Elsewhere we quote appreciations from enthusiastic teachers. Here are some of the schools who have sent parties to an MPA activity this year:

Barden High, Burnley; Blackburn College; Blackburn Mount Pleasant Resource Centre; Blacko Jnr, Barrowford; Bradley CP, Nelson; Burnley College; Calder View School, Burnley; Castle Hill J & I, Todmorden; Clitheroe Royal Grammar School; Cornholme J & I; Ferney Lee J & I, Todmorden; Habergham High, Burnley; Hargher Clough Jnr, Burnley; Gibfield School; Haslingden High; Ivy Bank High, Burnley; Mansfield High, Brierfield; Moorhead High; National CE, Todmorden; Nelson & Colne College; Primrose Hill School, Burnley; Rossendale College; St Mary's College, Blackburn; St Mary RC Primary; St Pauls Constable Lee, Rawtenstall; St Theodores High School, Burnley; Shade Jnr, Todmorden; Temple St. Day Centre; Towneley High, Burnley; Walsden J & I; Whalley CE Jnr.

In the coming year we aim to invite a forum of arts teachers to advise us on future provision. We are keen to hear from any local teachers wishing to express their views.

The following subscribed to membership of MPA in 1990/91

INDIVIDUAL MEMBERS 56
 FAMILY MEMBERS 40
 CORPORATE MEMBERS 2
 Co-operative Retail Services Limited
 Marks & Spencer PLC

LOCAL NON PROFIT GROUPS 91

Accrington & District Bonsai Society
 Accrington Lions
 Airedale Church
 Alder Grange Secondary School
 All Saints Church, Earby
 Antley Youth & Shell Group
 Britannia Co. Primary School
 Burnley Folk Club
 Burnley & Pendle Multi-Racial Playbus Association
 Burnley Boys Club
 Burnley General Hospital
 Burnley Light Opera
 Burnley Youth Theatre
 Burnley Municipal Choir & Orchestra
 Burnley & District Gilbert & Sullivan Society
 C & P Sports & Social
 Calder Rural Artists Group
 Central Gospel Mission Nelson
 Chantlers PTA
 Charisma Sound Light & Vision
 Cliviger Sports Association
 Cornholme Youth Jazz Band
 Crawshawbooth School Association
 Earby Community Association
 Edenfield CE Co. Primary School
 Fence Festival
 Friends of Peel Park School
 Friends of Weavers' Triangle
 Friends of Salesbury School
 Friends of St Marys School Association
 Friends of Christ Church School
 Friends of Castercliff
 Gannow Community Association
 Great Harwood Agricultural Society
 Habergham High School
 Hebden Bridge Nursery Action Group
 Helmshore Co Primary School
 Higham PTA
 Hillside Methodist Church
 Holme Committee Sabden

Ivy Bank High School PTA
 Keighley Day Centre
 Lancashire Youth & Community Service
 Lord Street School PTA
 Marsden CP School
 Moorhead High School
 N W Fellowship/MIND
 Padiham Co Primary School
 Pakistan Welfare Association (Nelson)
 Pendle Hippodrome Theatre
 Pendle Arts Gallery
 Pendle Artists
 Pendle Youth Service
 Pennine Ink Writers Workshop
 People in Common Housing
 Pollard Moor Staff Social
 Primet Association
 Red Water Arts
 Rhyddings County High School
 Rossendale Country Fair
 SS Peter & Pauls Primary School
 St Clements Amateur Dramatic Music Society
 St Cuthberts Amateur Opera/Drama Soc
 St James Players Briercliffe
 St John Ambulance
 St Johns C E Primary School
 St John Stonefold
 St Josephs Convent School
 St Josephs RC Primary School
 St Michael's & All Angels School PTA
 St Pauls C E School
 St Pauls Constable Lee School PTA
 St Saviours Church Bacup
 St Stephens Church, Burnley
 St Theodores RC High School
 Stoneyhurst College
 Stubbins School PTA
 Student Union, Nelson & Colne College
 Todmorden Greenpeace Group
 Travellers Methodist Youth Club
 Trawden & District Agricultural Society
 Waddington C E Primary School
 Walsden Carnival Committee
 Walverden CP School PTA
 Water Band (Rossendale)
 West Craven High School
 Westholme Association
 Whitewell Bottom Community Centre
 Whittlefield Infant School
 Whalley C E Primary School
 Youth & Community Services, Rossendale

BENEFITS OF MEMBERSHIP

If you are not already a member of Mid-Pennine Arts, you can support your local arts service and receive a wide range of benefits by joining now. Members receive:

- ADVANCE MAILING about all MPA activities
- EQUIPMENT ON LOAN OR HIRE for your event or party
- GENEROUS DISCOUNTS: Money-off vouchers and group booking deals for events
- COMPANY EVENTS: We can advise and assist when you plan a party, celebration or staff event
- CONSULTANCY for corporate members, if you are interested in a mural, a sculpture, a photographer or any aspect of arts and crafts
- WALLSPACE: Members can borrow from our exhibition loan scheme for their foyer, canteen or work space
- CREDIT in our publicity for all corporate members subscribing £75 or more
- INVITATIONS to all previews and special events
- VOTING RIGHTS on future policy and plans

Please enrol me/us for membership of Mid-Pennine Arts for 1991/92

Name _____

Organisation (if applicable) _____

Address _____ post code _____

Telephone Nos (Home) _____ (Work) _____

Category: Individual £7.50 Local Non-Profit Making Group £25
 Family £10.00 Corporate £25 - £100 (please send details) I enclose crossed cheque/PO for £ _____ (made payable to MPAA)

SEND TO: Mid-Pennine Arts, Yorke Street, Burnley BB11 1HD

Honorary Treasurer's Report on the Accounts

For the year ended 31st March 1991

12

The detailed income and expenditure for 1990/91 and the comparative figures for 1989/90 are shown below and on the following two pages. Expenditure is analysed between programme costs and general administration so that the direct costs of productions and projects are shown more clearly.

The Association in its original estimates for 1990/91 budgeted for a small deficit of £110 for the year. A combination of increased income from events and investments together with no significant variation in expenditure has led to a substantial surplus for the year of £7,171. The accumulated surplus has therefore risen to £11,184 at 31st March 1991 which allows for some possible limit to the increases the contributing local authorities would be requested to find over the next two years. The level of financial assistance received from the regional arts associations rose by 5% in 1990/91.

The General Equipment Reserve has been increased to £14,380 at 31st March 1991 which allows for realistic replacement values for equipment which needs replacing or new items which are planned to be purchased over the next three to five years. The Association is currently in a sound financial position to meet the various new initiatives which may be adopted from the recent three year plan.

STEPHEN BARNES, I.P.F.A.
Honorary Treasurer

BALANCE SHEET			
As at 31st March 1991			
1990		£	£
	CURRENT ASSETS		
40	Stock	189	
5,178	Debtors	4,863	
30,000	Temporary loan - Borough of Pendle	40,000	
5,333	Bank Balance	11,463	
260	Cash in Hand	260	
<u>40,811</u>		<u>56,775</u>	
	CURRENT LIABILITIES		
(24,612)	Creditors	(31,211)	
<u>16,199</u>	NET CURRENT ASSETS		<u>25,564</u>
<u>16,199</u>			<u>25,564</u>
	REPRESENTING		
	GENERAL FUND		
	Balance at 1st April, 1990	4,013	
4,013	Add Excess of income over expenditure for the year	7,171	11,184
	GENERAL EQUIPMENT RESERVE		
	Balance at 1st April, 1990	12,186	
	Add Transfer from Revenue Account	7,020	
		19,206	
<u>12,186</u>	Less Expenditure incurred this year	4,826	14,380
<u>16,199</u>			<u>25,564</u>

Photo: Peshkar Asian Showcase: Our youngest performer.

Mid-Pennine Arts Association
Revenue Account - Year Ended 31st March 1991

13

EXPENDITURE

1990 £	£	Administration £	Programme £	£
33,131	Promotions, Events & Activities			
	Music		9,315	
	Theatre		10,015	
	Dance & Mime		1,753	
	Literature		925	
	Media		136	
	Excursions		1,196	
	Venue Hire		1,301	
	Equipment		1,026	
	Visual Arts		6,890	
	Miscellaneous		<u>267</u>	
			<u>32,824</u>	32,824
10,280	Orchestral Series		11,819	11,819
11,956	Event Publicity		11,390	11,390
4,649	Vehicle Expenses			
	General expenses		2,359	
	Transfer to reserve		<u>2,570</u>	
			<u>4,929</u>	4,929
<u>1,001</u>	Consumables		664	<u>664</u>
61,017				61,626
67,464	Employees			
	Salaries and wages	23,875	45,949	
	National insurance	<u>2,058</u>	<u>4,166</u>	
		<u>25,933</u>	<u>50,115</u>	76,048
5,865	Supplies & Services			
	Purchase of equipment	67		
	Maintenance of equipment	1,306		
	Transfer to reserve	4,450		
	General office expenses	135		
		<u>5,958</u>		5,958
3,009	Travel & Subsistence			
	Car allowance	538	817	
	Subsistence	<u>166</u>	<u>769</u>	
		<u>704</u>	<u>1,586</u>	2,290
997	Public Relations		1,027	1,027
15,871	Establishment Expenses			
	Printing & Stationery	941	1,313	
	Postages	336	3,028	
	Telephones	348	1,394	
	Insurances	899	1,300	
	Audit & Accountancy	500		
	Training	190	189	
	Honoraria	1,200	-	
	Credit Card Charges		275	
	Staff Recruitment	419	778	
	Value Added Tax	734		
	Miscellaneous	<u>1,195</u>		
		<u>6,762</u>	<u>8,277</u>	15,039
5,724	Premises			
	Rent	2,711		
	Rates	519		
	Service Charge	<u>2,432</u>		
		<u>5,662</u>		<u>5,662</u>
159,947				167,650
<u>1,869</u>	EXCESS OF INCOME OVER EXPENDITURE			<u>7,171</u>
<u>161,816</u>				<u>174,821</u>

Mid-Pennine Arts Association

14 Revenue Account - Year Ended 31st March 1991

INCOME

1990 £		£	£
	Grants		
13,730	Burnley B.C.	15,380	
11,830	Hyndburn B.C.	13,250	
12,610	Pendle B.C.	14,120	
9,310	Rossendale B.C.	10,000	
1,400	Todmorden T.C.	1,500	
-	Whitworth T.C.	<u>250</u>	
48,880		54,500	
<u>12,240</u>	Lancashire County Council	<u>12,240</u>	
61,120			66,740
	Arts Associations Contributions		
66,000	North West Arts Association	69,300	
<u>1,700</u>	Yorkshire Arts Association	1,850	
67,700			71,150
	Earned Income		
2,185	Membership fees	2,065	
8,530	Ticket sales	10,076	
6,376	Orchestral series	7,022	
3,027	Gallery commission	2,838	
665	Sponsorships	-	
1,815	Donations	2,406	
1,102	Merchandising	1,058	
<u>98</u>	Other	-	
23,798		—	25,465
	Other Income		
210	Photocopying	158	
120	Publicity	-	
<u>642</u>	Miscellaneous	<u>207</u>	
972			365
1,211	Bank Interest Received		918
7,015	Loan Interest		10,183
<u>161,816</u>			<u>174,821</u>

We have examined the books and accounts of The Mid-Pennine Arts Association for the year ended 31st March 1991 and have obtained all the information and explanations which we have required. The foregoing Revenue Account and Balance Sheet are in agreement with the books and accounts and give, in our opinion, a true and fair view of the state of the Association's affairs as at 31st March 1991 and of the Excess of Income over Expenditure for the year then ended.


 PROCTOR & PROCTOR
 CHARTERED ACCOUNTANTS

NELSON: 5th August 1991

HONORARY OFFICERS

President	: Simon Towneley JP
Chairman	: Councillor L Harrison
Vice-Chairman	: Councillor J David
Hon. Secretary	: Brian Whittle MA LLB
Hon. Treasurer	: Stephen Barnes IPFA
Vice Presidents	: Mr R McNeill, Mr J Meakin Mr K Nightingale, Mr C Sanders Mr I Watson, Miss J Wilson

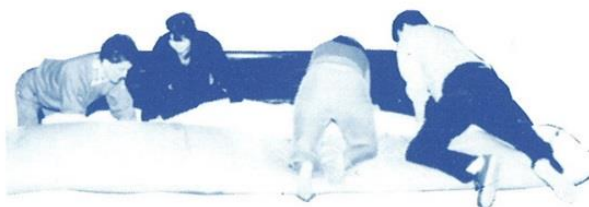
EXECUTIVE COMMITTEE

Saghir Ahmed, Co Cllr J Ainsworth,
Sylvia Alexander, Mr B Ashton,
Lyn Barbour, Alan Barton,
Elaine Block, Susan Bourne,
Josephine Burns, Mr T Burrows,
Cllr Mrs D Carthy, Cllr F Clifford,
Chris Coates, Cllr Mrs I Cooney,
John Dyer, Cllr J Grime,
Brian Hall, Audrey Hastwell,
Co Cllr Mrs H Harding,
Mr J Hartley, Cllr P Heyworth
Mr B Hill, Mr W Hindle,
Peter Kenyon, Mr J Knowles,
Arthur Marriott, Cllr A Orrell,
Mr D McLaney, Ian Mitchell,
Viv Monteath, Co Cllr Mrs N Orrell,
Cllr D Proud, Elaine Roberts,
Cllr F Sharples, Co Cllr C Stone,
Cllr Mrs E Tate, Lt Cdr G Taylor,
Mr B Townson, John Travis,
Mr M Wedgeworth, Co Cllr C Westell,
Mr P Wightman, Mr F Wood

STAFF

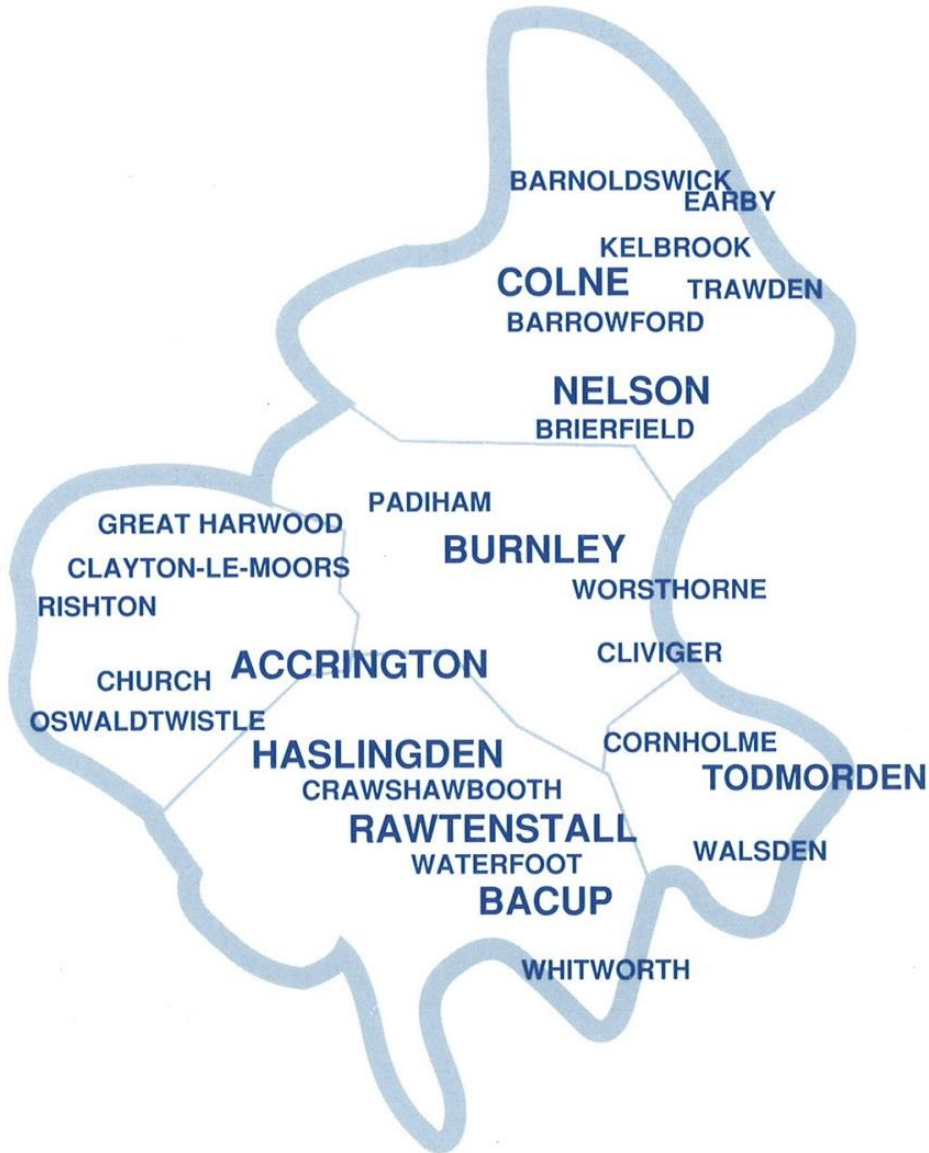
Janet Clunie	: Programme Administrator
Roy Clunie	: Technician P/T
Melanie Diggle	: Administrative Assistant
Kenneth Hampson	: Gallery Attendant P/T (to 22 Dec '90)
Alfred Harrison	: Cleaner P/T
Nick Hunt	: Director (from 15 Aug '90)
Richard Le Mare	: Programme Officer
Sheenagh Mayo	: Exhibitions Organiser
Julian Pearce	: Gallery Assistant P/T (from Feb '91)
Charles Sanders	: Director (to 17 June '90)
Allison Tennent	: Press & Publicity Officer
Work Experience	: Amanda Cash, Daren Pye, Kary Spencer
Volunteers	: Brian Hall, Kenneth Hampson, Tina Hampson, Sheila Holmes, Barbara Royle, Nora Simpson, Regine Simpson, Geoffrey Walton, Kate Wynn

Grateful thanks to all the above





MID-PENNINE ARTS SERVES THE LANCASHIRE BOROUGHES OF
 BURNLEY, HYNDBURN, PENDLE AND ROSSENDALE AND
 THE WEST YORKSHIRE TOWN OF TODMORDEN.



MID-PENNINE ARTS IS SUPPORTED BY NORTH WEST ARTS, LANCASHIRE COUNTY COUNCIL,
 YORKSHIRE ARTS AND THE MUSICIANS' UNION.



MID-PENNINE ARTS, THE GALLERY DOWNSTAIRS, YORKE STREET, BURNLEY BB11 1HD
 TEL: 0282 21986/29513